



# 咨询专家 Ask the Expert

## 思科SD-WAN网络迁移最佳实践

吴丹木, 客户体验技术专家李强, 客户体验技术专家

咨询订购: 400-010-8885、 [Support@ciscos.com.cn](mailto:Support@ciscos.com.cn)

09 July 2020



# This session is for you if you:

- Are deploying a Cisco SD-WAN solution
- Have purchased a Cisco SD-WAN solution
- Want to understand best practices and learn how to migrate to Cisco SD-WAN

# Agenda

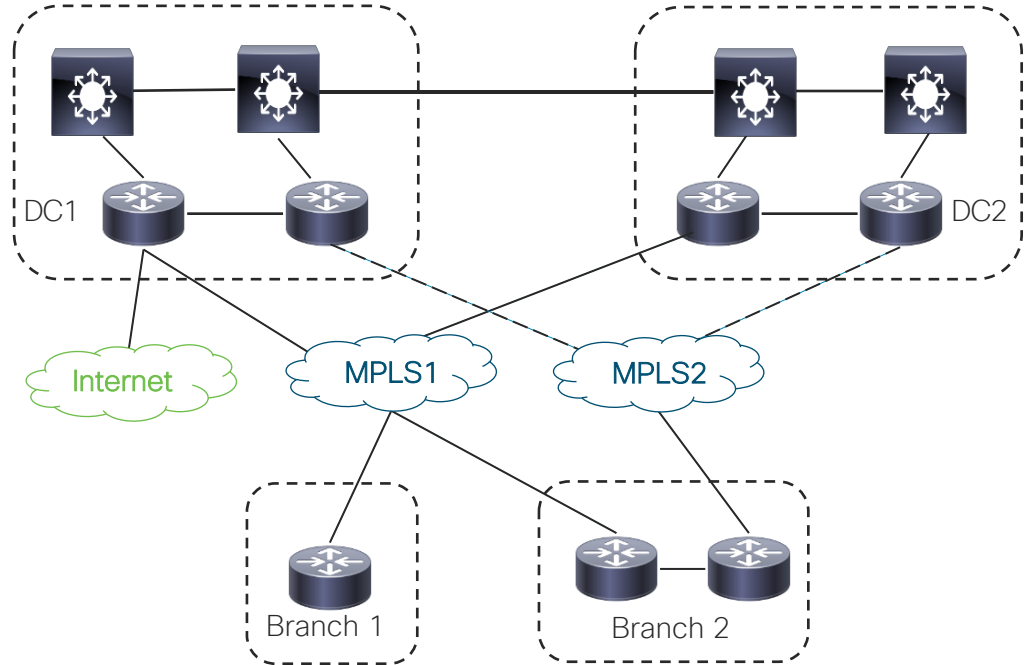
- 1 SD-WAN solution overview & Dashboard demo
- 2 Migration sequence and planning
- 3 Migration examples
- 4 SD-WAN demo
- 5 Q&A

# Cisco SD-WAN

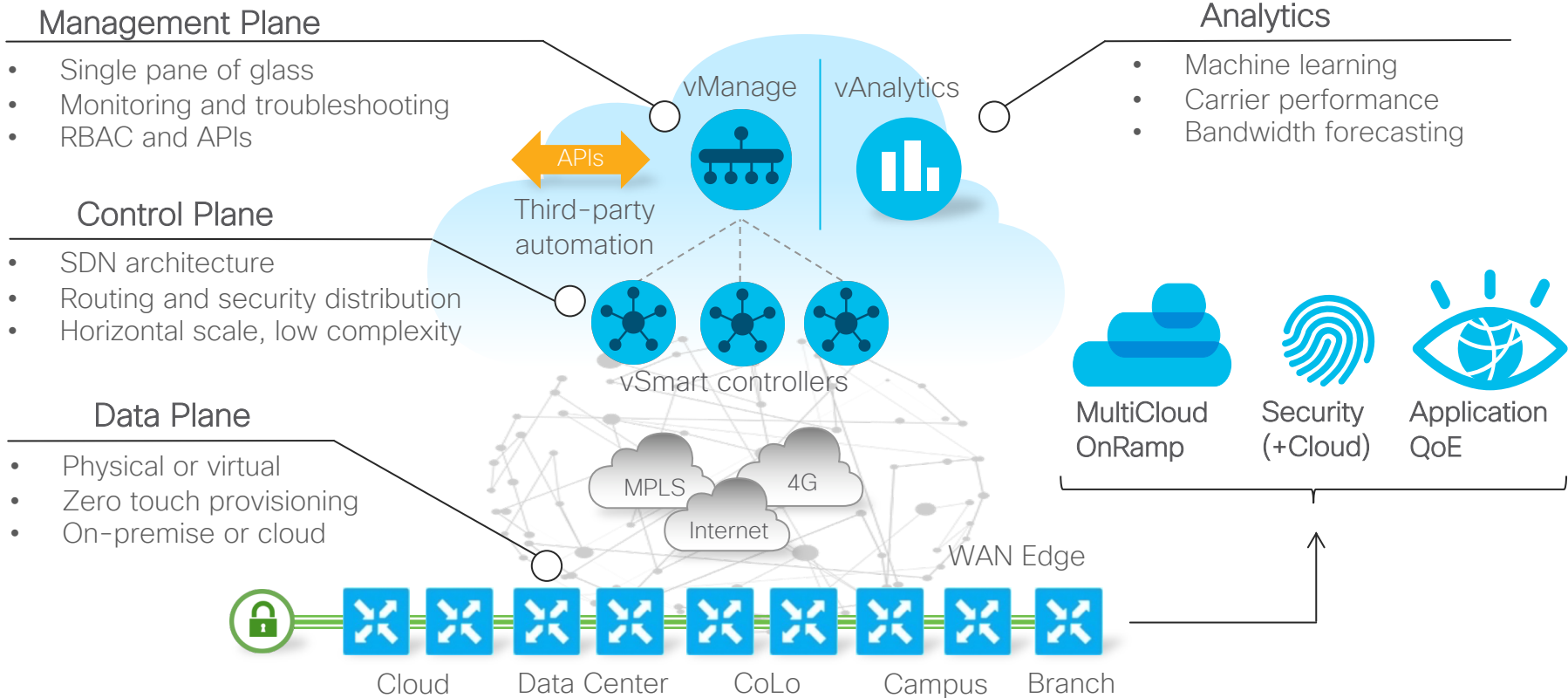


# Traditional network

- Two or even more MPLS circuits (expensive)
- Active / Standby
- Centralized internet connection via a “hub” in the network



# Cisco SD-WAN: cloud SDN architecture



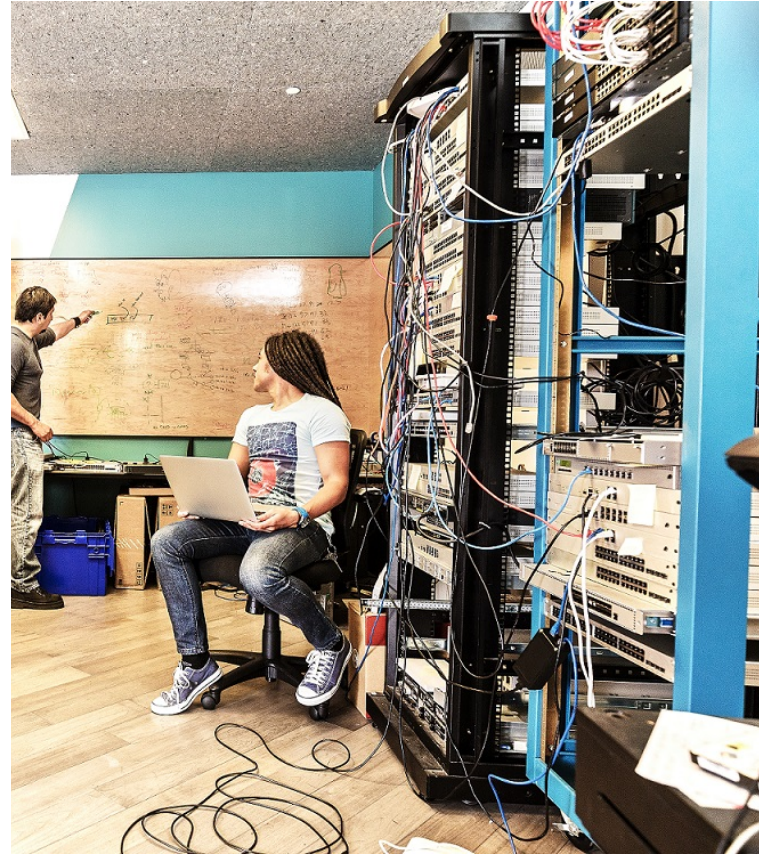


## Demo 1: SD-WAN overview



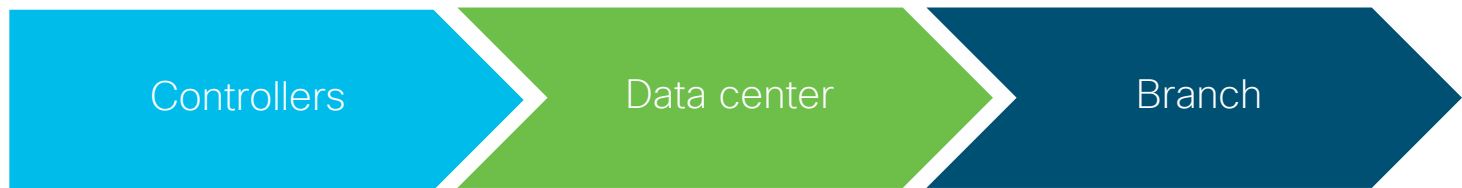
SD-WAN advanced

# Migration sequence and planning

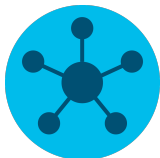




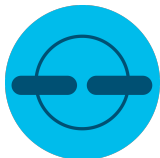
# Keep this sequence in mind



vManage



vSmart



vBond



# What to consider before migration

## Controllers

- Deployment model
- Redundancy
- Scale
- Firewall ports
- HA

## Data center

- New/existing circuits
- Design
- Routing
- Traffic path during migration
- Policy requirements

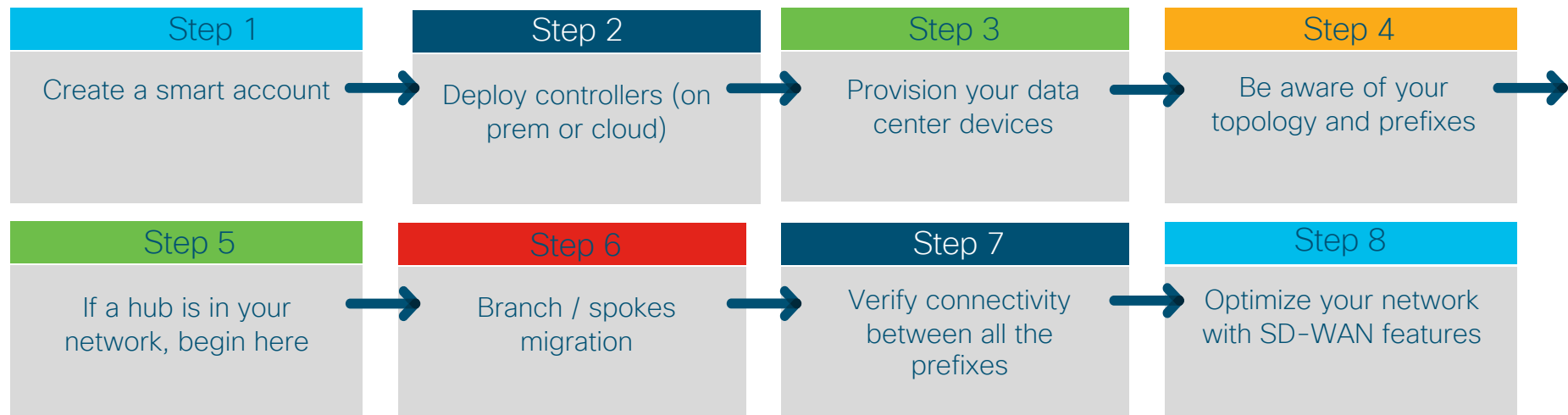
## Branch

- New/existing circuits
- Identify working applications/services
- Design
- Policy requirements

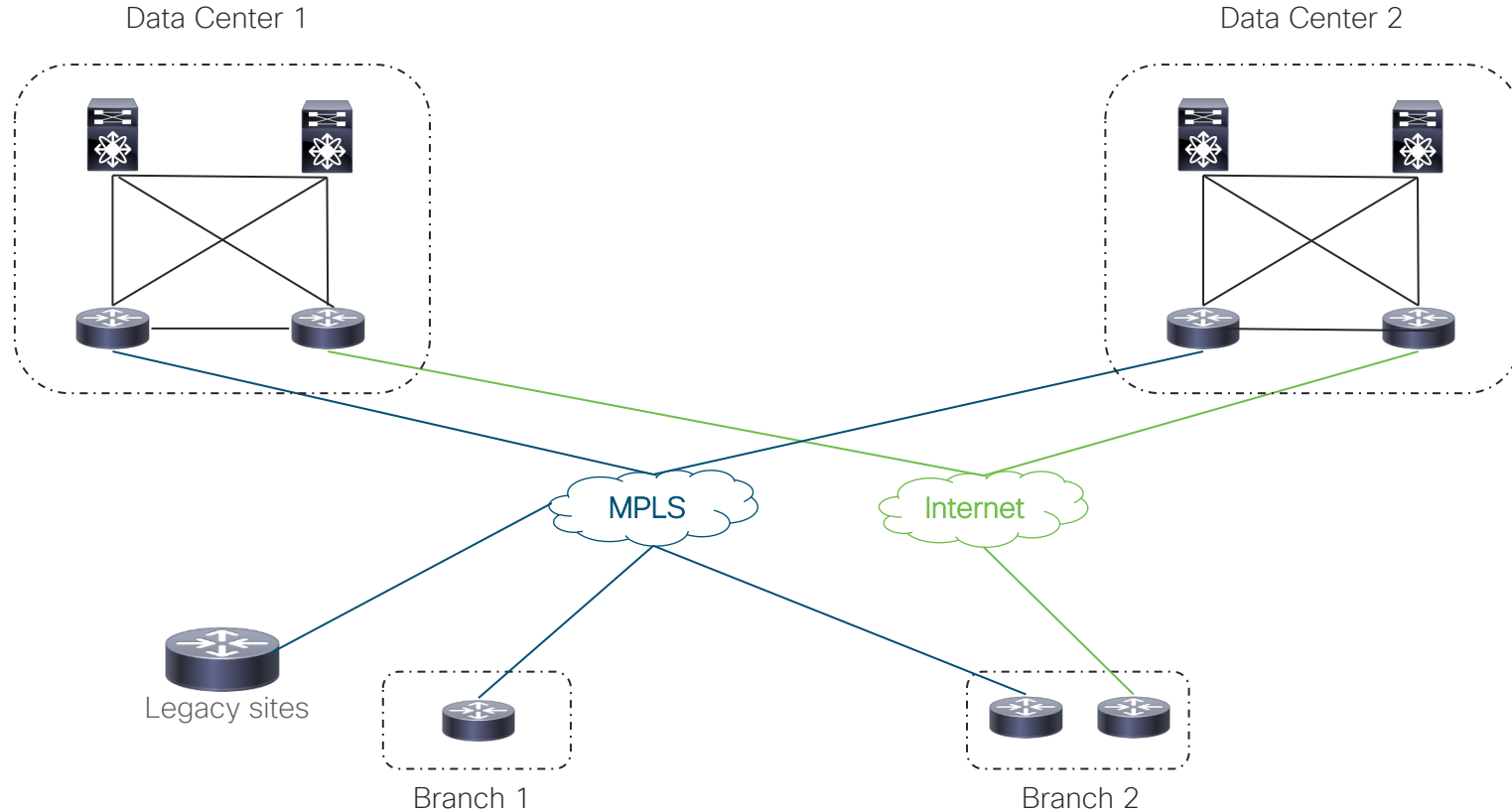
# Data center migration



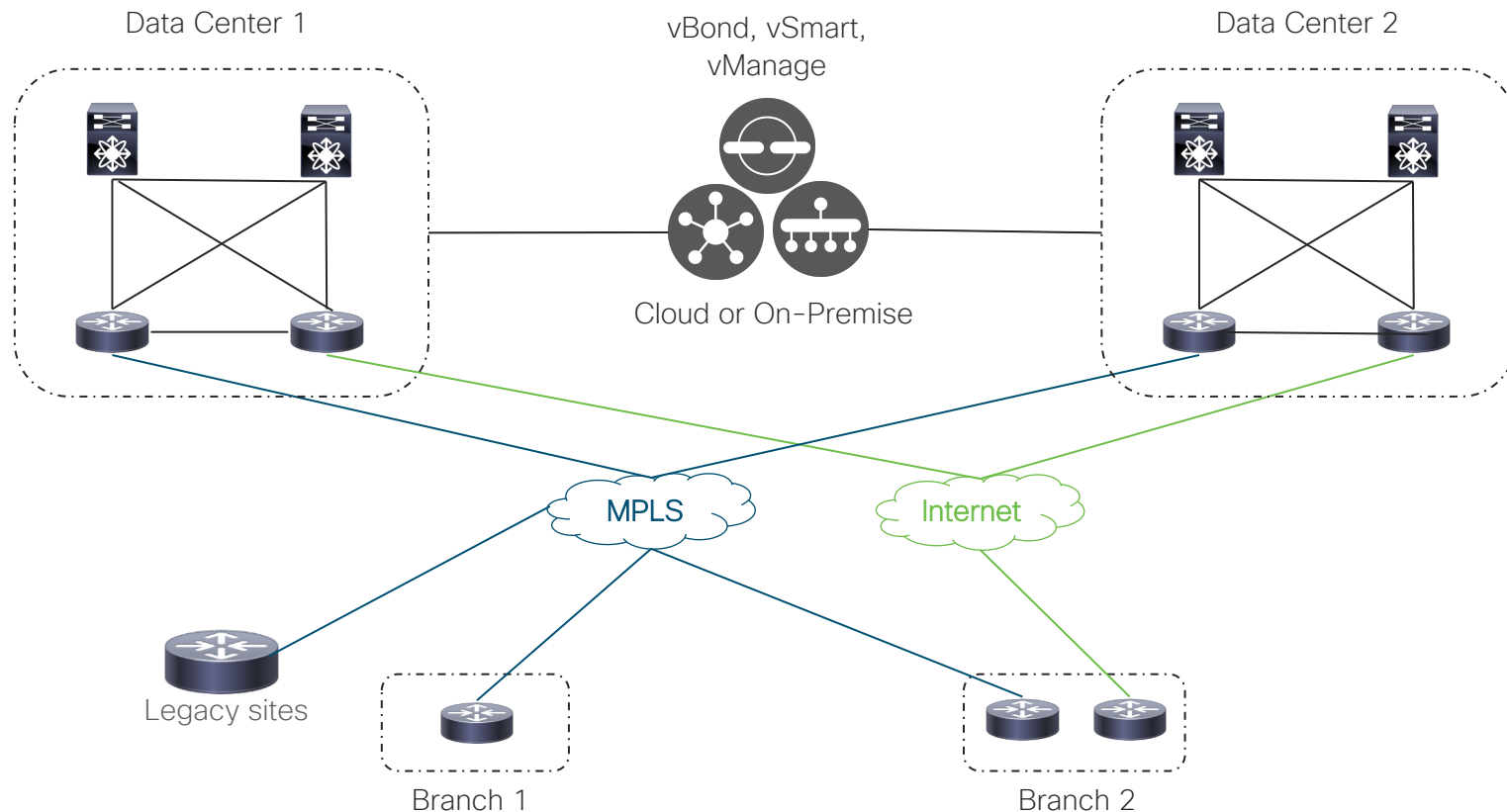
# Workflow: SD-WAN migration components



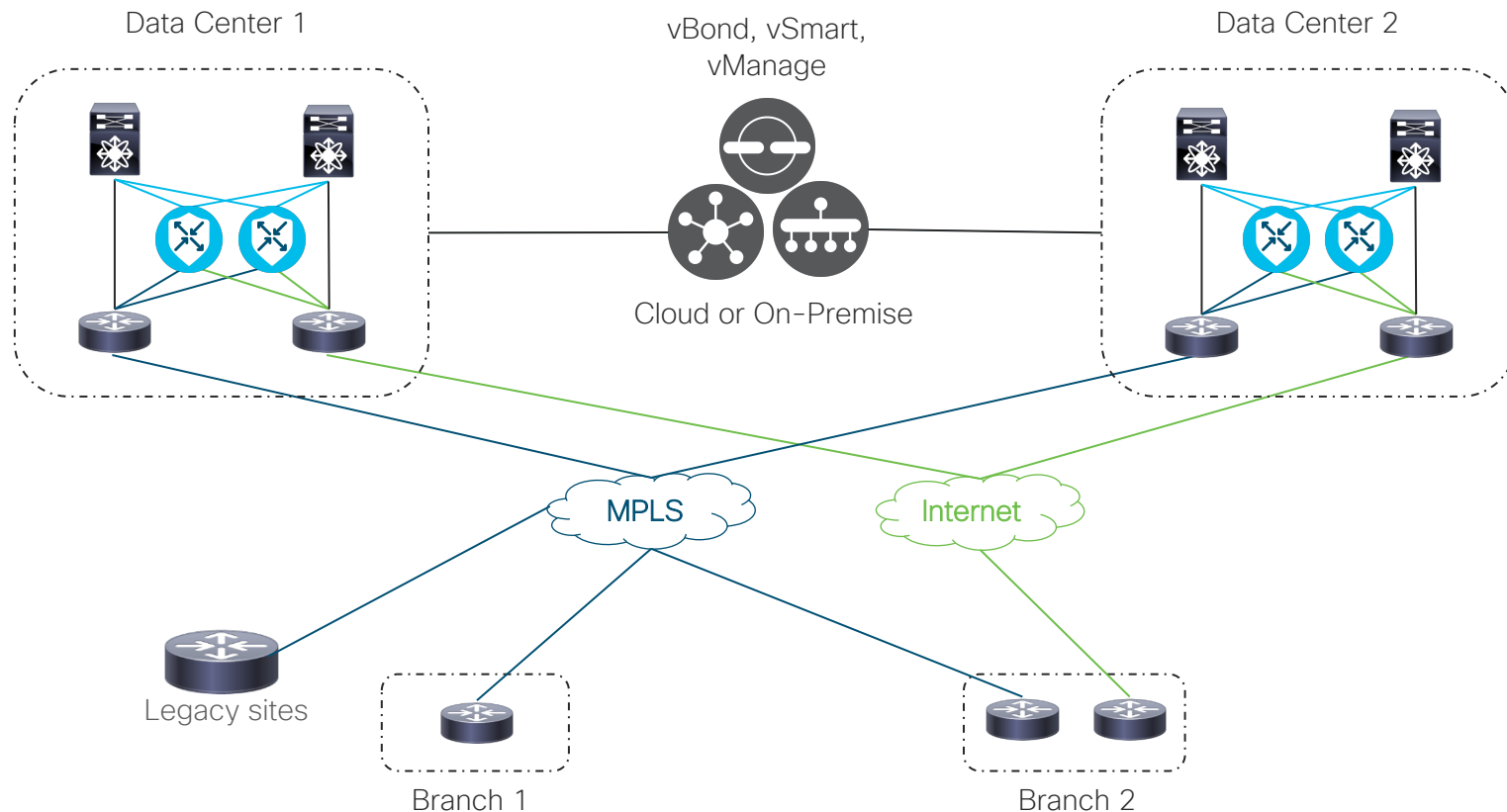
# Data center migration: existing topology



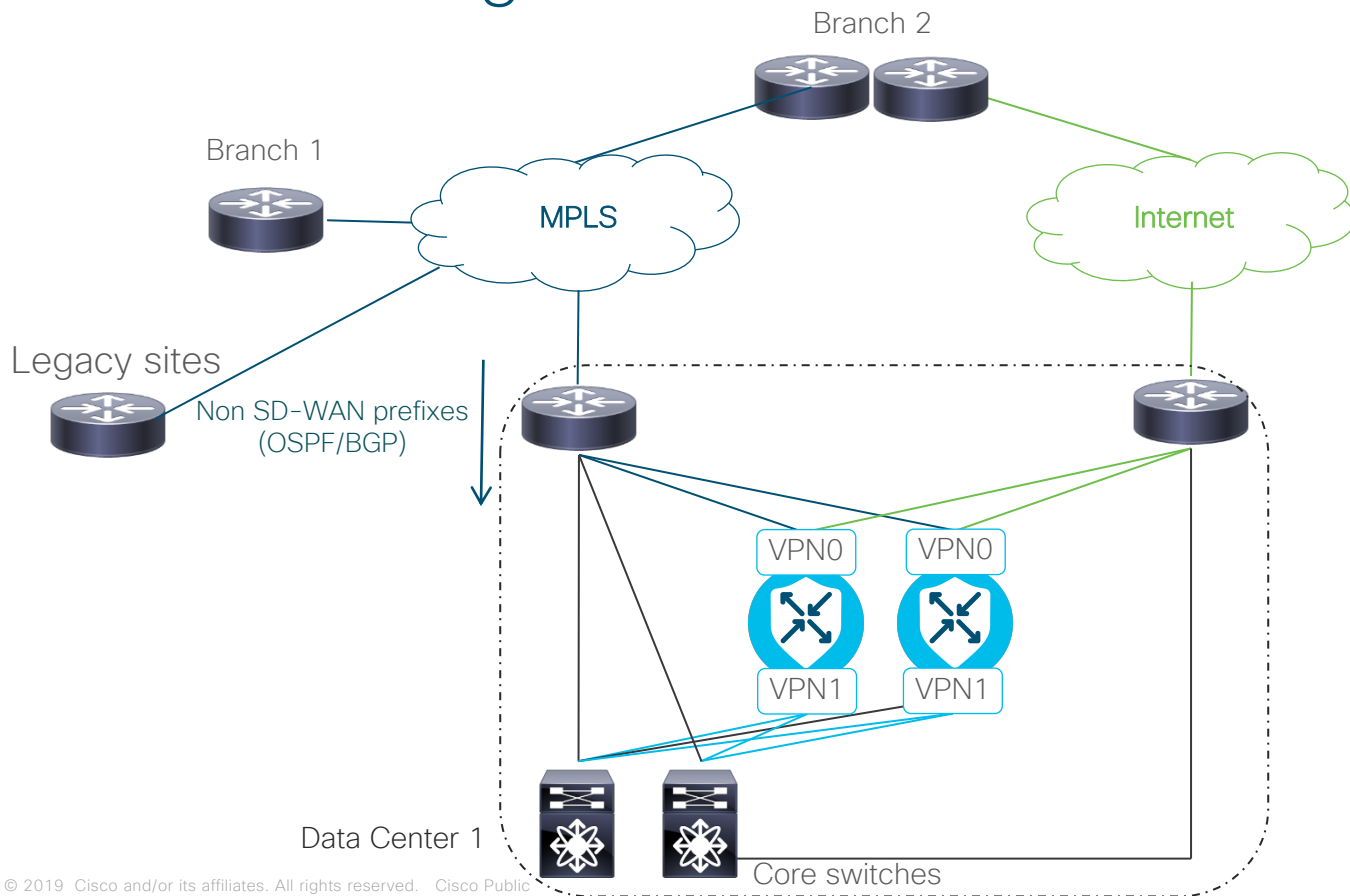
# Data center migration: deploy



# Data center migration: deploy

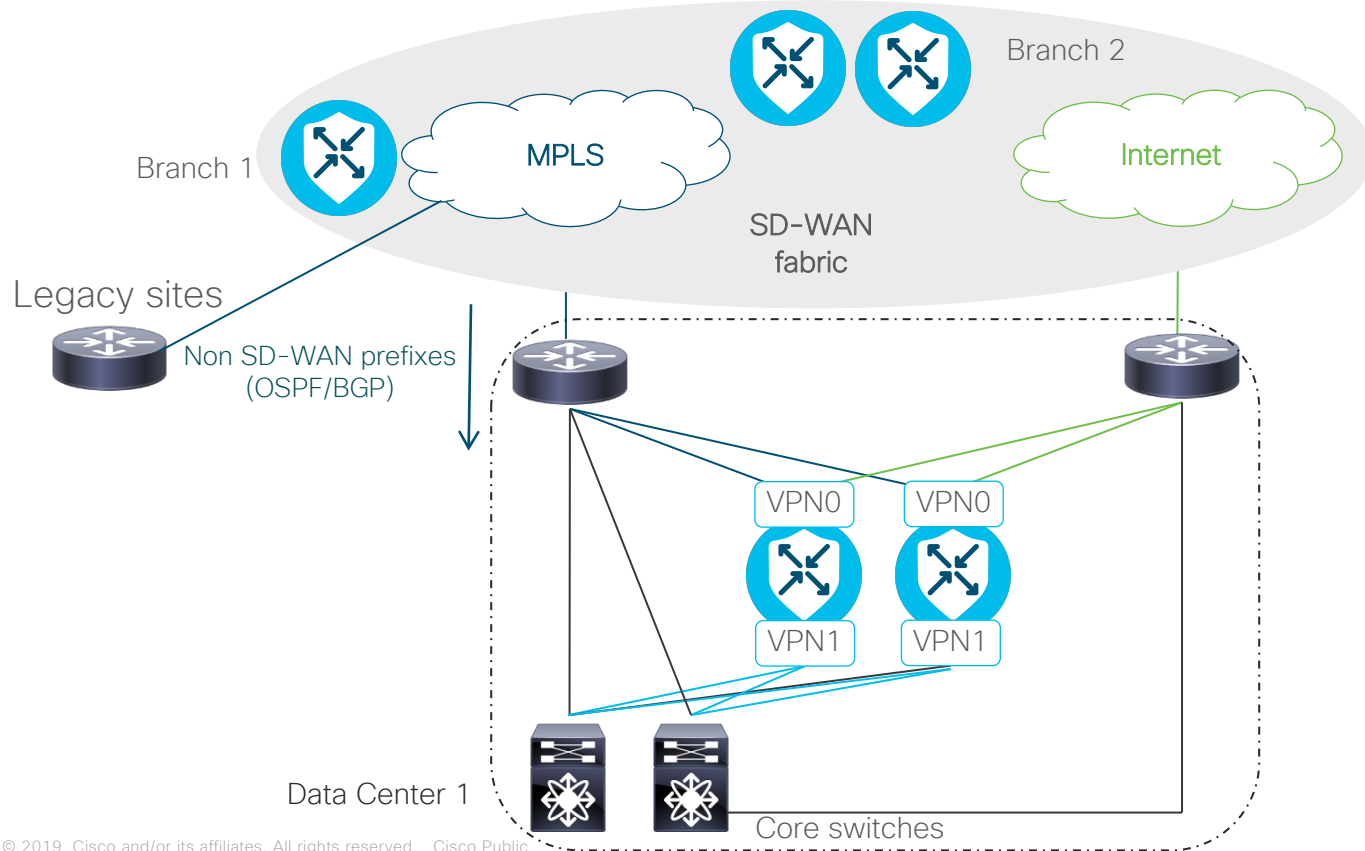


# Data center migration: build fabric

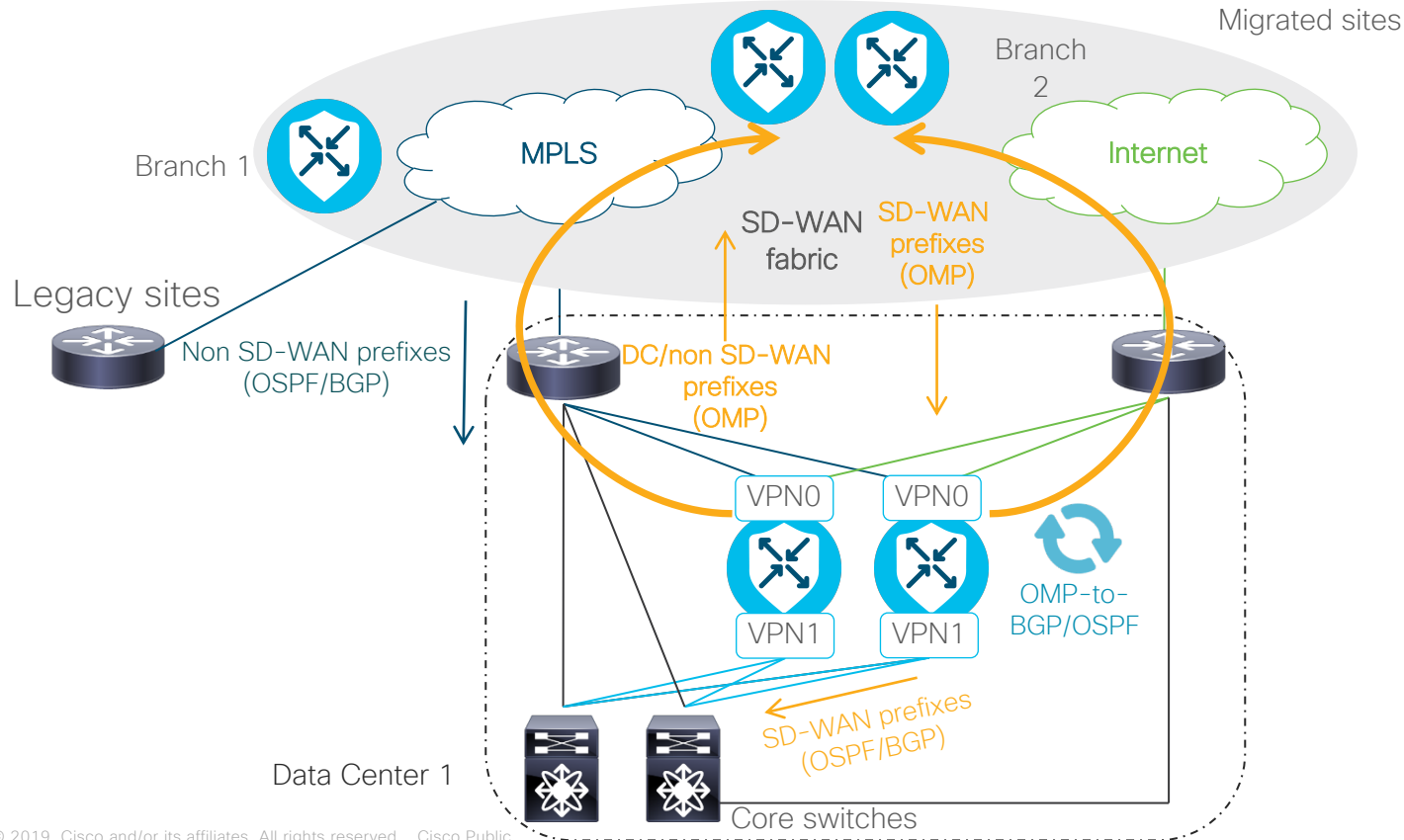




# Data center migration: build fabric



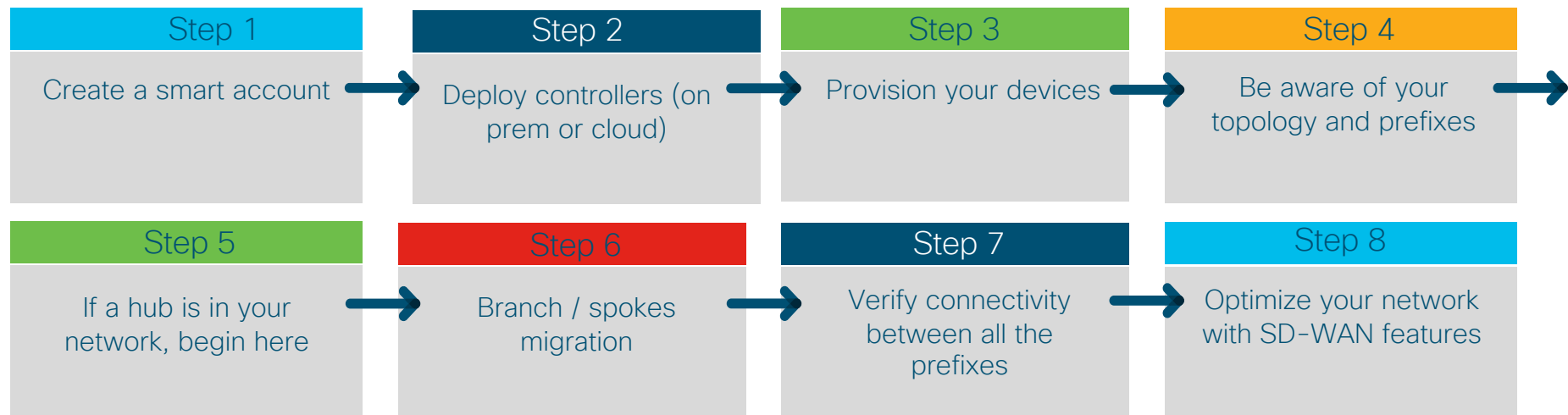
# Data center migration: build fabric



# Branch #1 migration

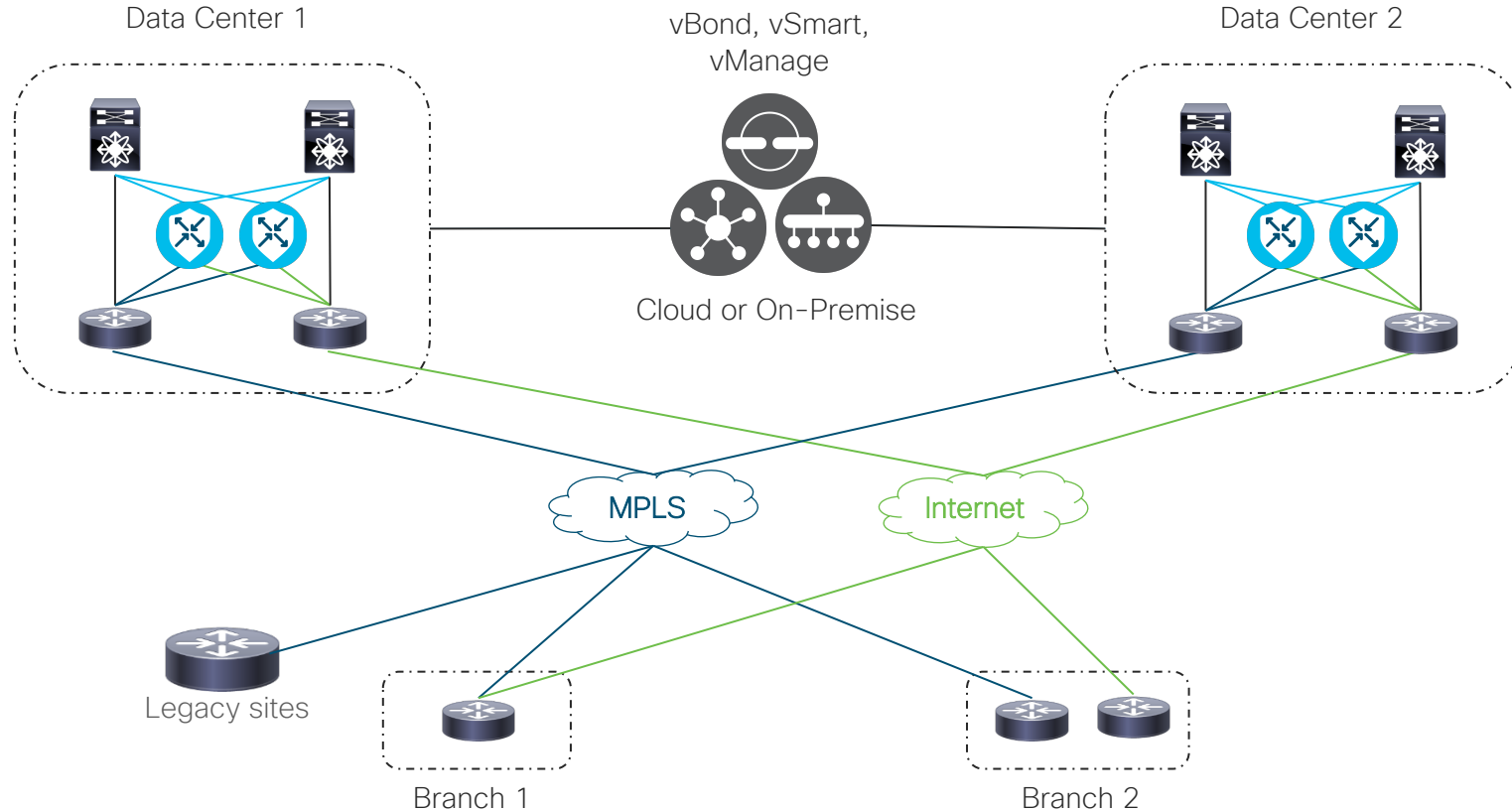


# Workflow: SD-WAN migration components



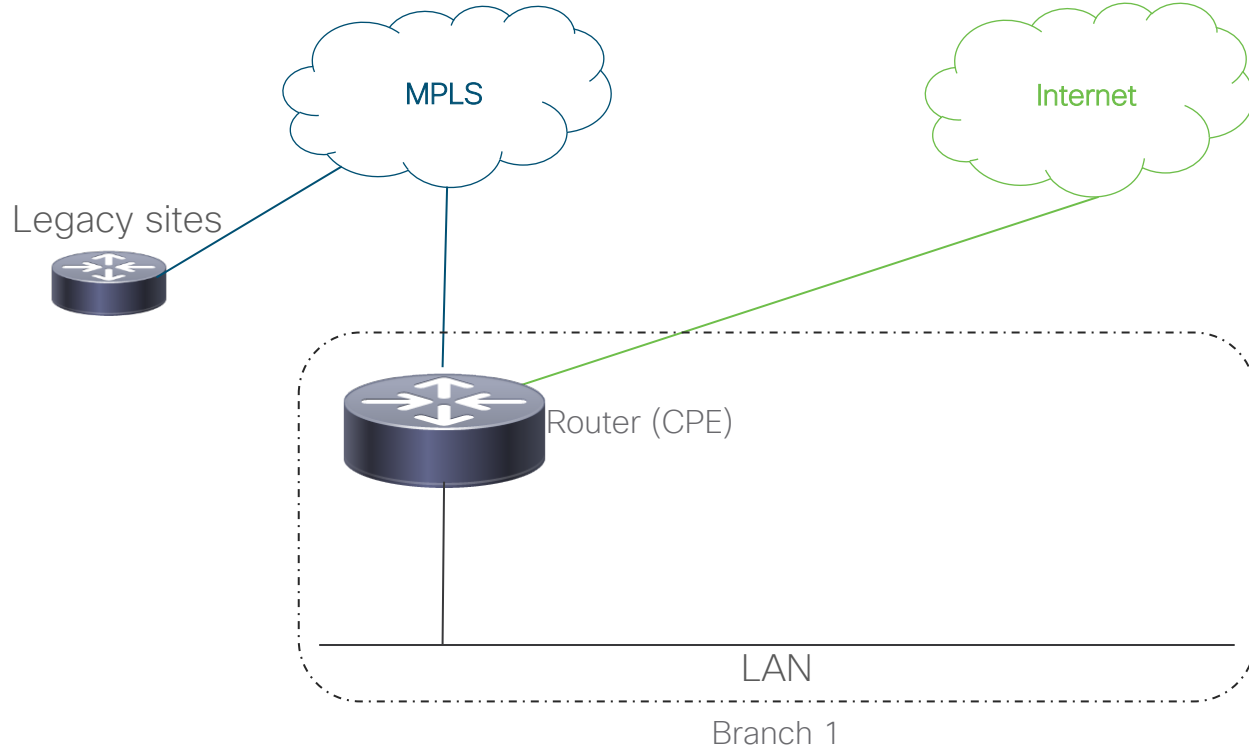
# Branch #1 migration

## Single router to new SD-WAN router



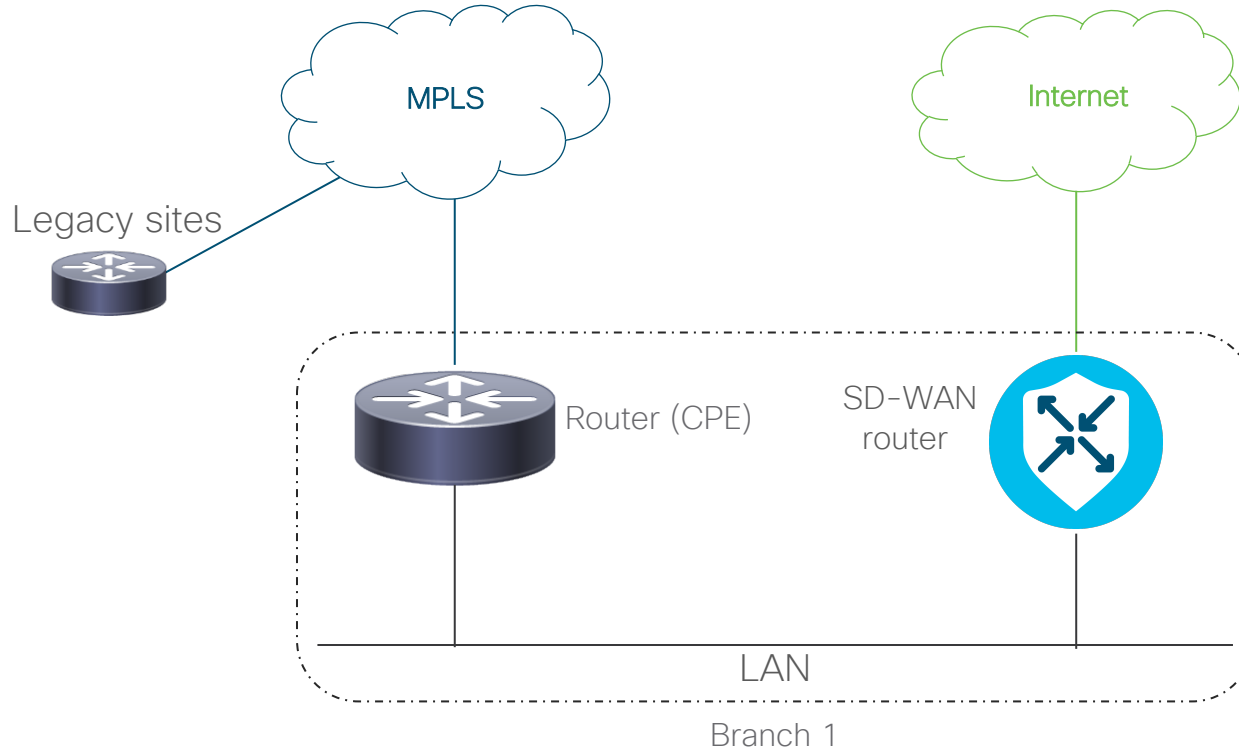
# Branch #1 migration

## Single router to new SD-WAN router



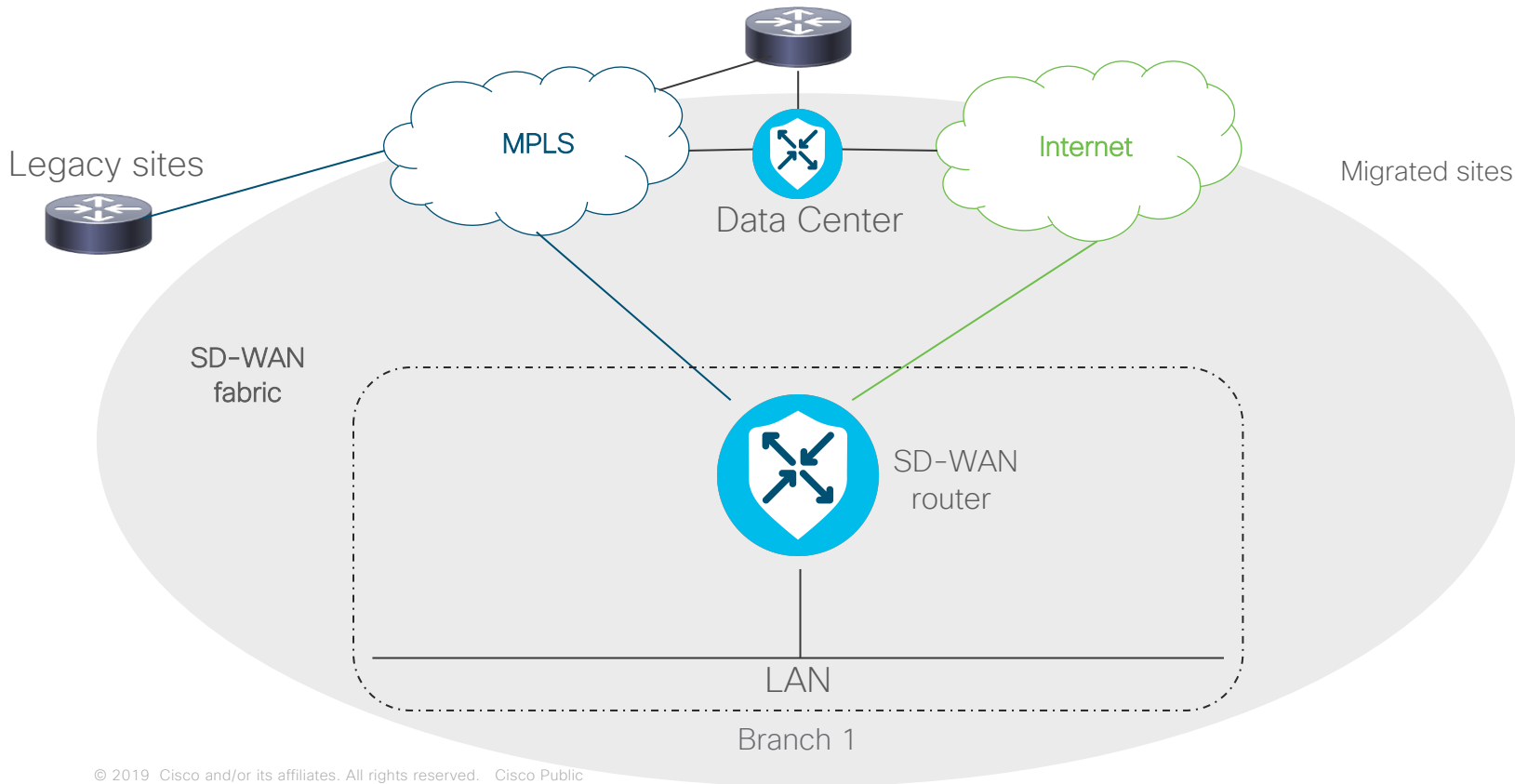
# Branch #1 migration

## Single router to new SD-WAN router



# Branch #1 migration

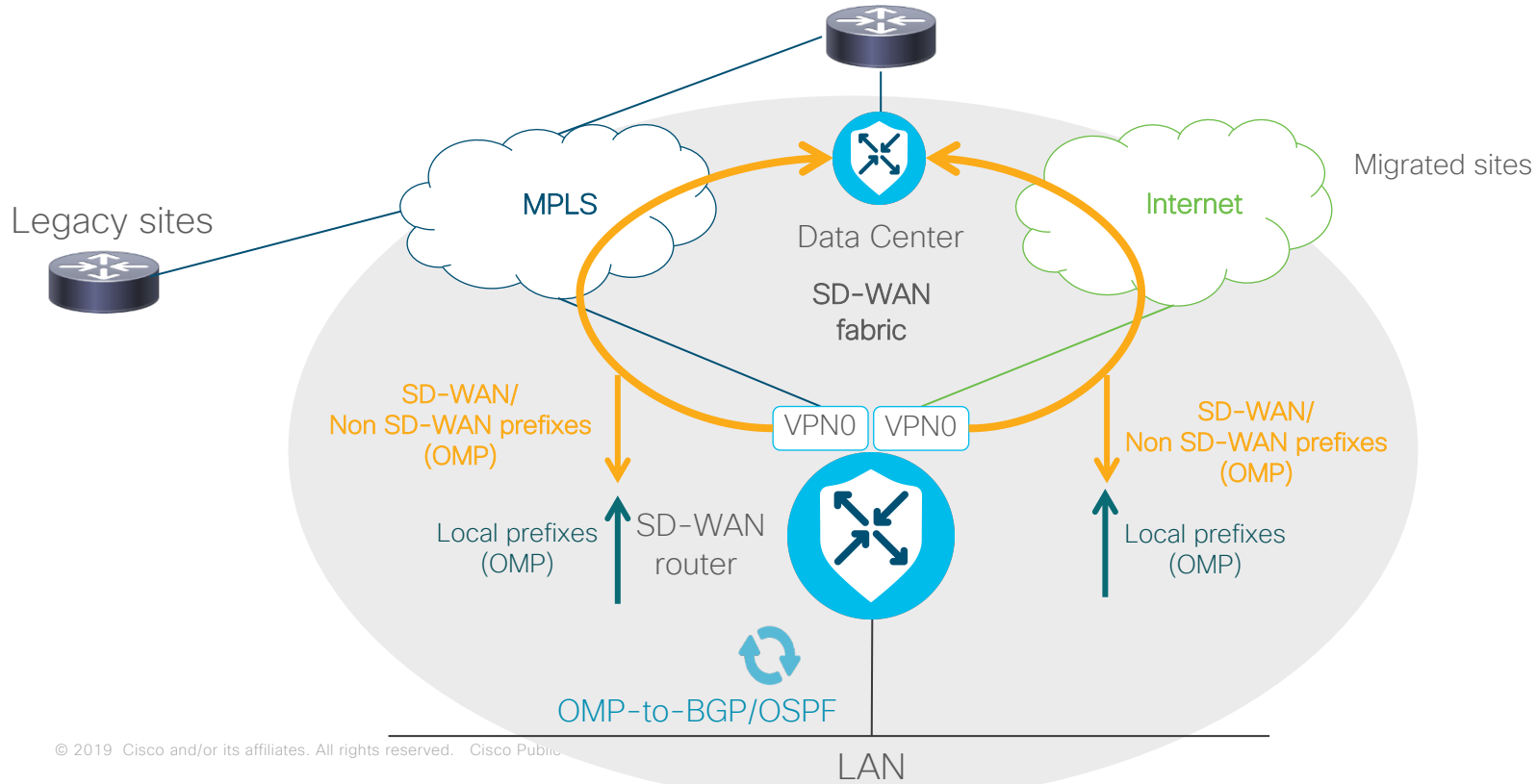
Single router to new SD-WAN router





# Branch #1 migration

## Single router to new SD-WAN router

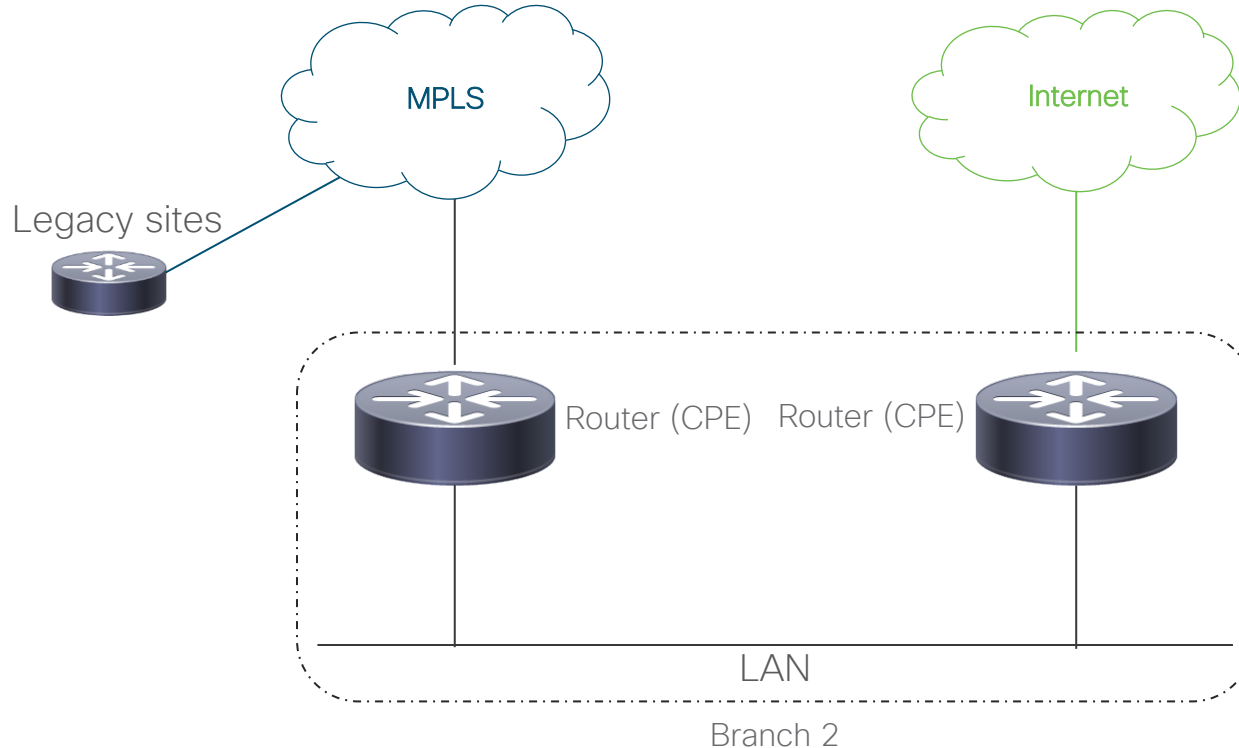


# Branch #2 migration



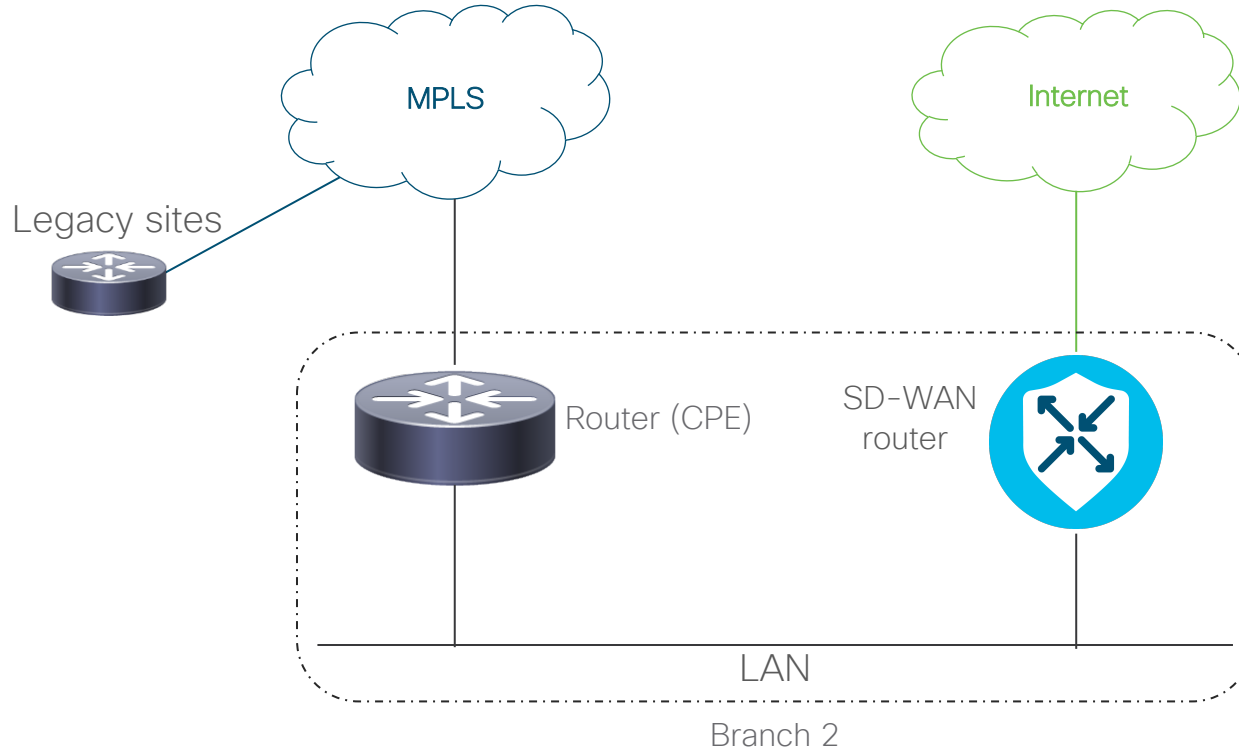
# Branch #2 migration

Two routers to two new SD-WAN routers



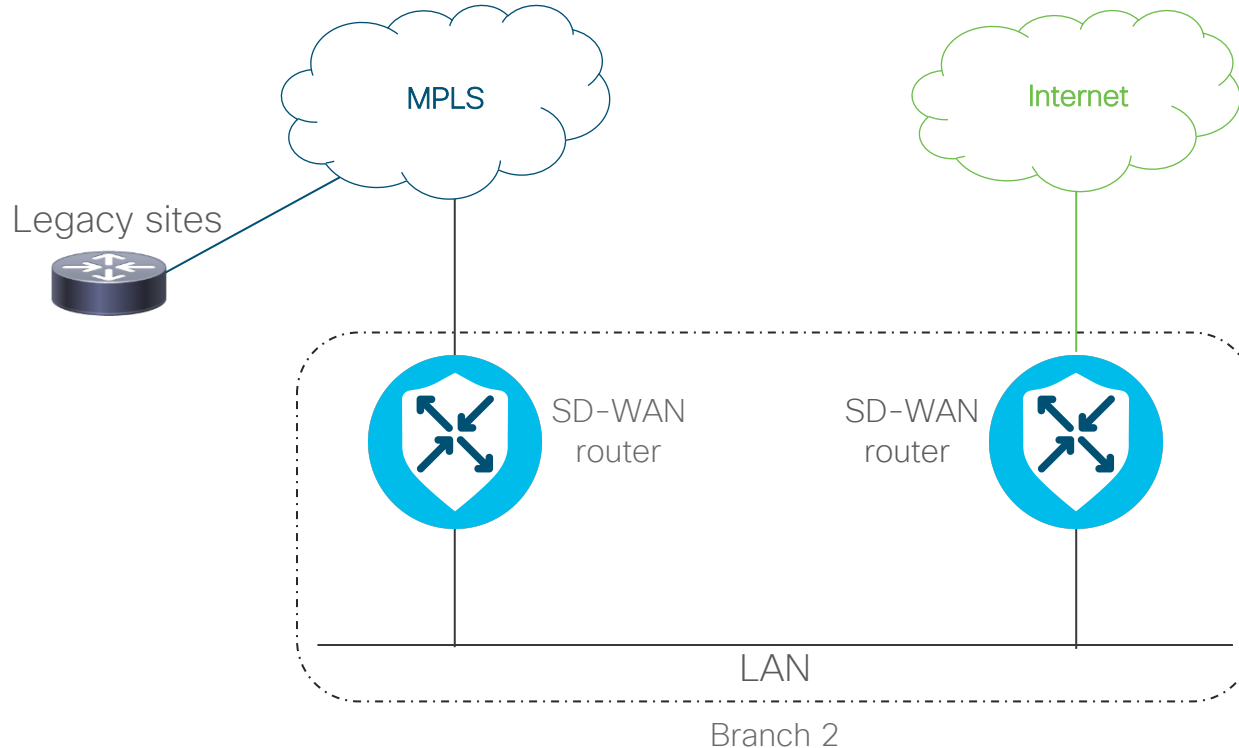
# Branch #2 migration

Two routers to two new SD-WAN routers



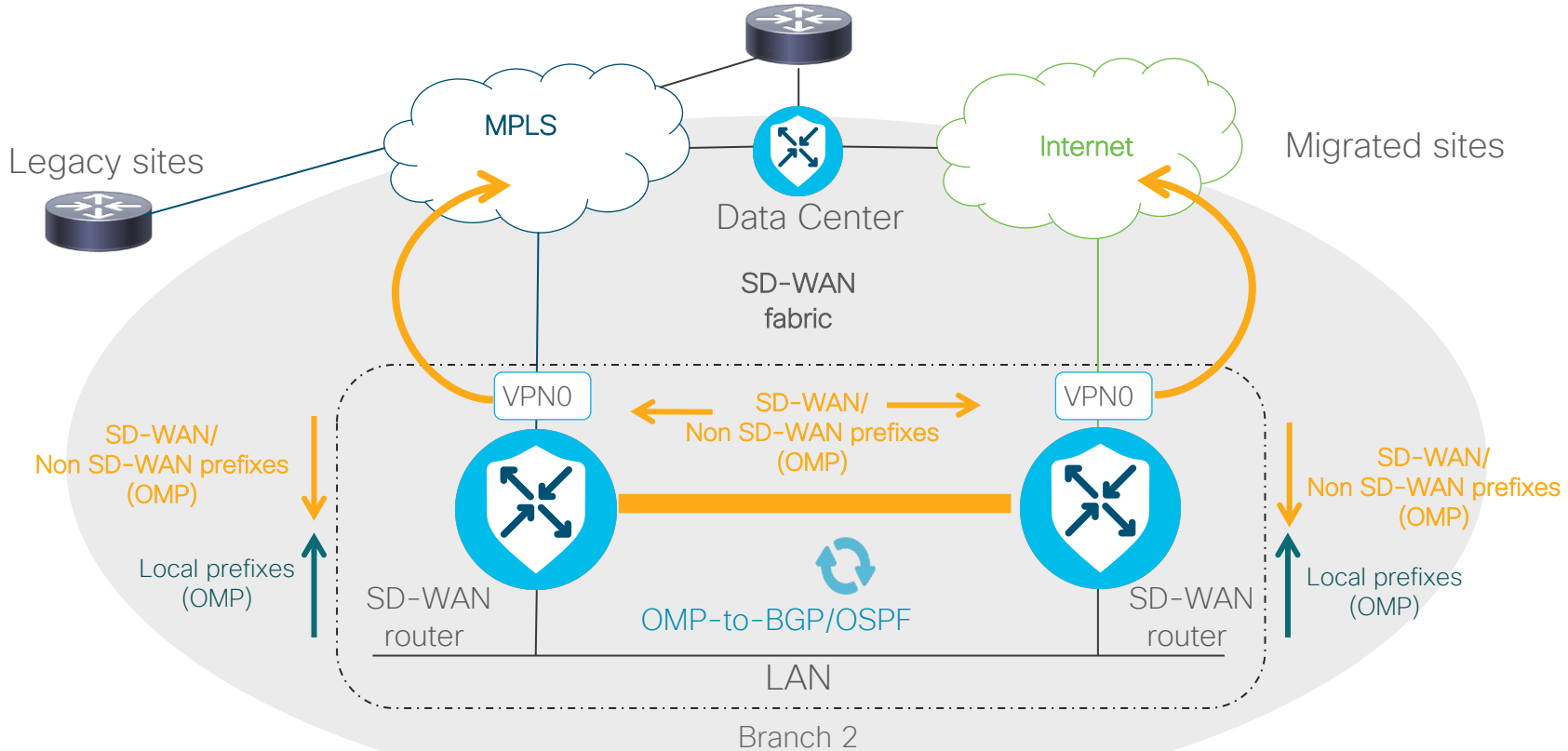
# Branch #2 migration

Two routers to two new SD-WAN routers



# Branch #2 migration

Two routers to two new SD-WAN routers





## Demo 2: SD-WAN advanced



## SD-WAN overview

咨询订购: 400-010-8885、 [Support@ciscos.com.cn](mailto:Support@ciscos.com.cn)

# Best practices for SD-WAN migration



Summarize routes of migrated sites



Deploy routers in active/standby model



No need to connect via SD-WAN overlay if DCI is available



Use “**ecmp-hash-key layer4**” command



Increase “**ecmp-limit**” from default of 4



Avoid enabling services on WAN tunnel interface



Avoid connecting SD-WAN router to aggregators



# Resource

咨询订购：400-010-8885、 [Support@ciscos.com.cn](mailto:Support@ciscos.com.cn)

- [Cisco DNA Center User Guide](#)  
[\(Release 1.3\)](#)
- [SD-WAN eBook](#)
- [SD-WAN Resource Kit](#)

## **Cisco DNA Services**

- [Services for Enterprise Networks](#)
- [Cisco Services eBook](#)
- [Cisco DNA Center Advise and Implement Service](#)

