



**STANTON**

Carpet + Custom Rugs + Runners + Luxury Vinyl

New Introductions 2021

*Atelier*<sup>®</sup>  
BY STANTON



# STANTON

Carpet + Custom Rugs + Runners + Luxury Vinyl

EST. 1980 by Sy Cohen, Stanton Carpet Corporation was built on the mission to create a brand that was synonymous with style and value for the decorative flooring market. Over the past 40 plus years, the company has grown to be North America's leading designer and supplier of decorative, high style, self-branded carpet and fabricators of custom sized rugs. Stanton sells its own branded products across the mid to high end residential market place with a stunning assortment of woven and tufted products, servicing over 4,000 retail partners across the United States & Canada. Today, Stanton's leading brands cover all key price points and aesthetics across the premium soft flooring market. In 2020, Stanton expanded into Luxury Vinyl with the introduction of Decorative Waterproof Flooring.

By strategically adding to it's portfolio of product offerings, Stanton has earned it's reputation as a complete resource for a broad variety of aesthetic choices and qualities for decorative broadloom, custom sized rugs, runners and luxury vinyl. A natural evolution of the brand is it's expansion in 2020 to the flooring .

In 2018, Stanton entered the world of commercial carpets. These carpets are made to withstand the different levels traffic in commercial settings, while still providing the level of style Stanton is known for. The commercial category continues to grow, and we continue to expand our line with inspiration of color and movement.

With those same principles in mind providing trendsetting products with superior service, Stanton expanded into the hard surface category in 2020. The Natural Beauty Series, a luxury vinyl waterproof flooring, was introduced featuring 24 truly unique colors inspired by nature.

Our goal at Stanton is to continue to be the trusted name in the trusted leading name in decorative flooring. Our products are crafted to exude luxury, style, and superior quality.

Front Cover: Leading Lines in Glacier  
This page: Waltz in Cloud



King Cheetah in Marine | @duzydesign



Marvelous in Sky | @metamorphosisinteriordesign







Lake Boden in Ebony | @pattilynninteriors



Dottie in Waterfall | @carpetremnant

Snap it. Tag it. Share it.

We love seeing the many creative ways you use Stanton at home and in your design projects. Share our mutual love for Stanton and our family of brands on social media by tagging us @stantoncarpet and using #stantoncarpet for a chance to be featured and inspire our dedicated followers.



Brightwater in Ivory | @spice\_designs



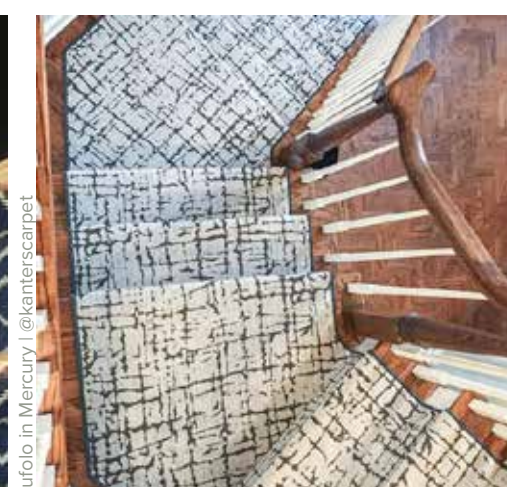
Mufasa in Navy Blue | @rachelschwartzdesign



Soundwaves in Chrome | @floorsbytheshore



Vizio in Indigo | @kristen\_mclaughlin\_interiors



Rufolo in Mercury | @kanterscarpet



Felix in White Rain | @thefelixidentity



# Stanton Elite Display

Beautiful woven synthetics, patterned wiltons, and cut pile wools



This highly popular 2-unit display features a sleek wood grain finish to match all other Stanton display systems. Newly-designed columns feature a more visible side view while the row lighting sports more light with less heat. One Elite Display now includes 2 units containing 160 pins (80 each unit) for the ultimate in flexible layout. The new 160-pin capacity allows for room to grow while allowing for an add-on display as well as more easily segmenting product categories.

**MATERIAL** Light Grey Laminate

**DIMENSIONS** 14'10" W x 7'9"H x 2'D

**PRODUCT SAMPLES** Holds 160 Sample Boards, 24"W x 36"L

Lulubella and Jazabella



# Westhope

Stanton is proud to introduce its newest wilton. Westhope is a bold, fresh geometric. Intricate pattern structures make wire wilton one of the brands most luxurious constructions. Tonal striations emphasize the fine needle point loops. Fresh new colors brighten the range. Soft yellow, classic blue and versatile neutrals... there is something for everyone! Wilton is a growing category with high market demand. We are sure Westhope will turn heads!

Cottage Collection • Wool/Polysilk • Wire Wilton • 13'2" Width



Sand



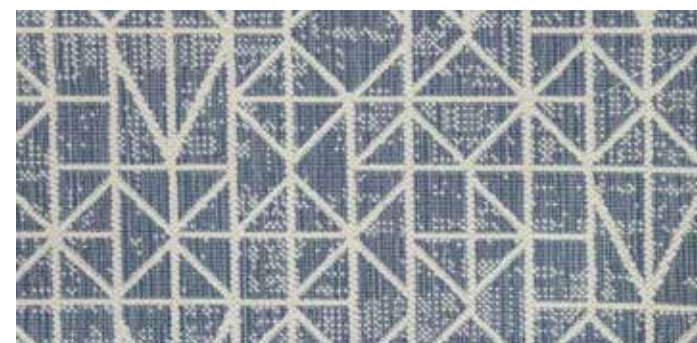
Cloud



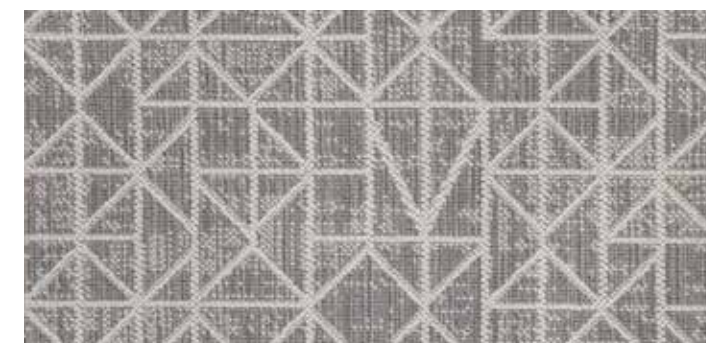
Sunshine



Sky



Wave



Shadow



Raven



# Ditto

Over the last few years animal skins have proven to be the ultimate in versatile patterning. Ditto is a perfectly scaled skin-like design. Easy on the eyes and well balanced, this flatweave is sure to fit any interior style. Gorgeous, multi-colored striations run vertically through the goods. The clever color mixing gives Ditto freshness and life.

De Novo Collection • 100% Wool • Machine Woven • 13'2" Width



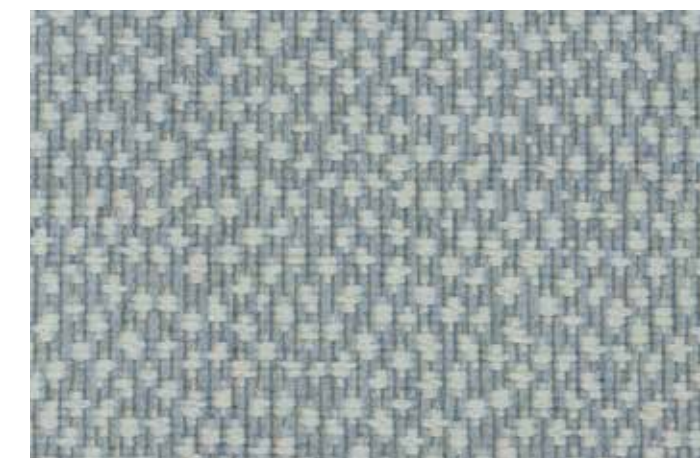
Chrome



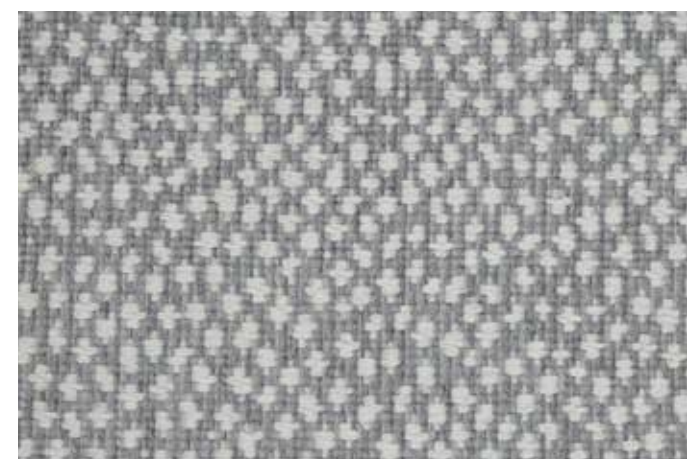
Wheat



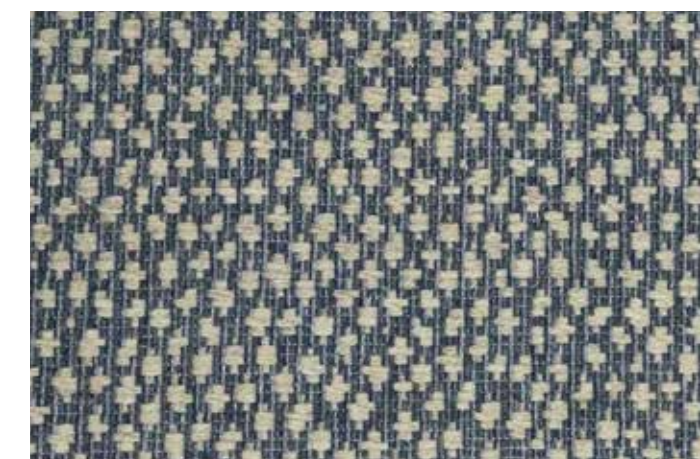
Pistachio



Powder Blue



Shadow



Marine



# Evermore

Evermore is a traditional Greek Key with timely twist. The classic patterning, lively colors and intriguing construction are a recipe for success. Multicolored striations accentuate the intricacy of the detailed patterning. This is casual, high-end luxury at its best. Wonderfully suited for homes both traditional and transitional.

De Novo Collection • 100% Wool • Machine Woven • 13'2" Width



Chrome



Pistachio



Powder Blue



Shadow



Wheat



Marine

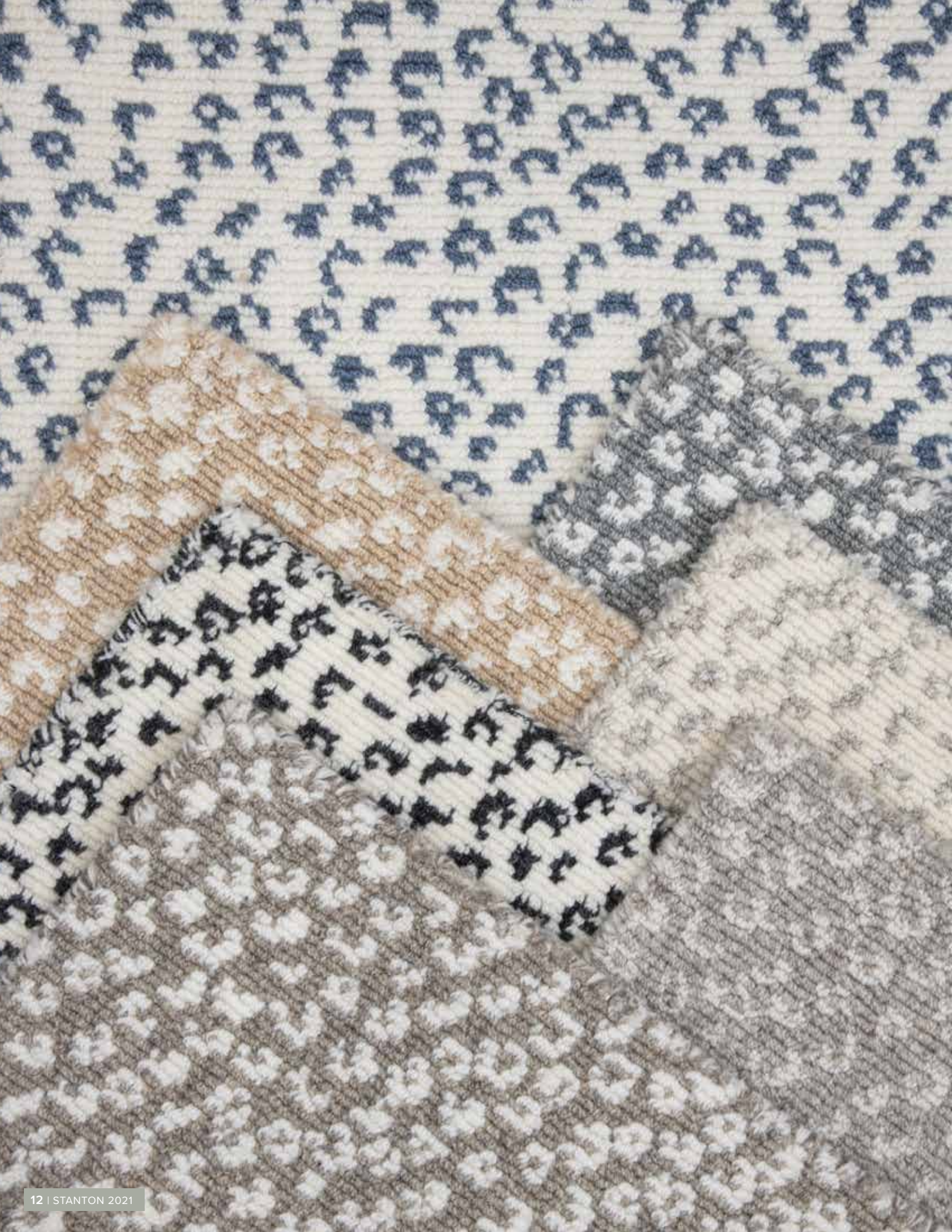




# Pantera

Pantera, this playful and exotic design has been done in a new and innovative machine made construction. The all-over patterning makes Pantera well balanced and easy on the eyes. The lofty loops give this carpet an intriguing, knitted look. Comprised of New Zealand wool, the high-quality yarn is clear and radiant. Pantera gives casual luxury a whole new look!

Dolce Vita Collection • 100% New Zealand Wool • Knitted Woven • 13'2" Width



Washed Denim



Panda



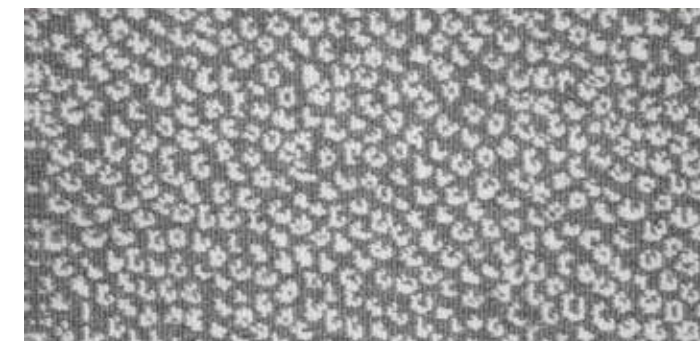
Ivory



Oat



Shadow



Flannel



Earth



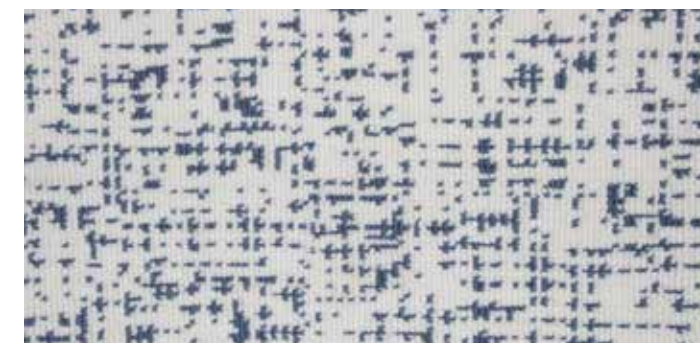
# Pepe

Pepe, done in the same leading-edge construction as Pantera, is a contemporary texture with a whole lot of look! Delightful color combinations. Top notch New Zealand wool yarn. A unique knitted look and soft, cozy hand are just some it's features. This contemporary design is perfect for any interior from transitional to modern.

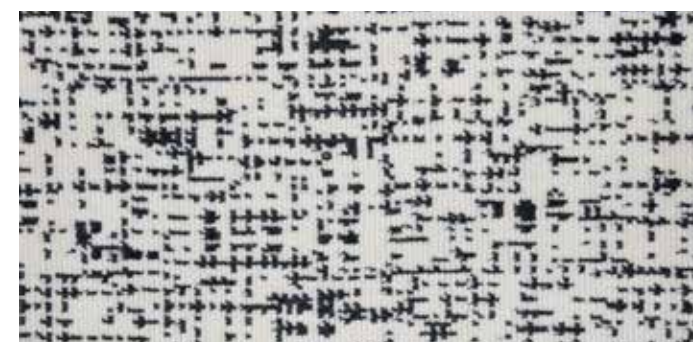
Dolce Vita Collection • 100% New Zealand Wool • Knitted Woven • 13'2" Width



Ivory



Washed Denim



Panda



Oat



Wedgewood



Shadow



Flannel



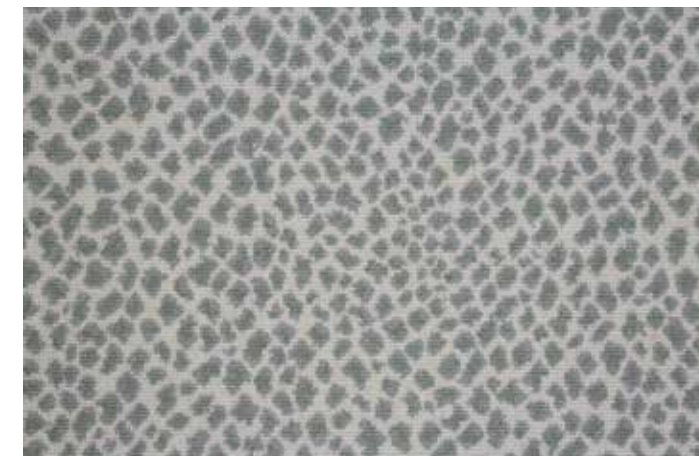
# Felix

We've never met a leopard we didn't love and Felix is our favorite. New color introductions give this timeless design a whole new look! We look forward to seeing these new colors in bedrooms and living rooms near you.

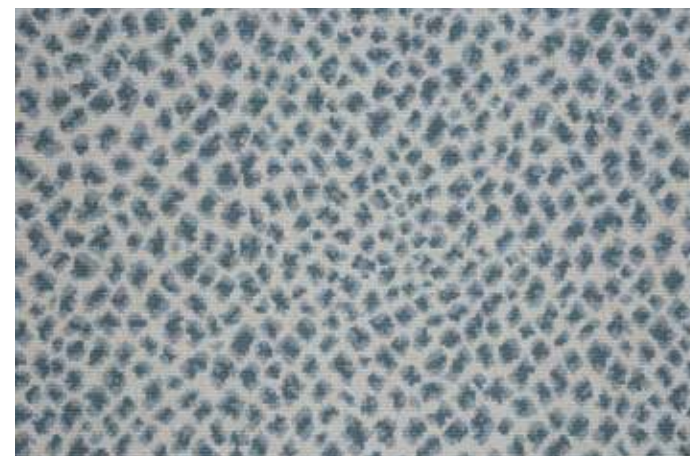
Wiltex Collection • Wool/Nylon • Wire Wilton • 13'2" Width



Sunshine



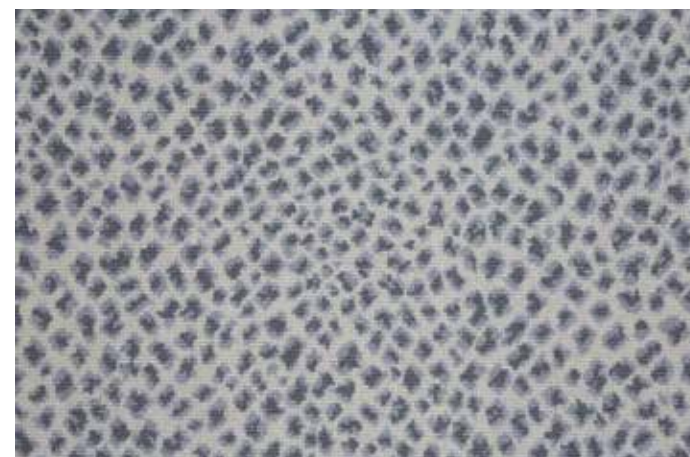
Eucalyptus



Caribbean Blue



Bluebell



Metal



# Jazabella

Introducing Jazabella... A mélange stripe inspired by a handmade flatwoven construction. Whether rug or runner, this design makes quite an impression. Its high-low pile, fresh new colors, and ultra-soft hand make this a superb choice for any home.



Bella Collection • SD Royaltron™ Polypropylene/Polysilk • Face to Face • 13'2" Width



Alabaster



Mink



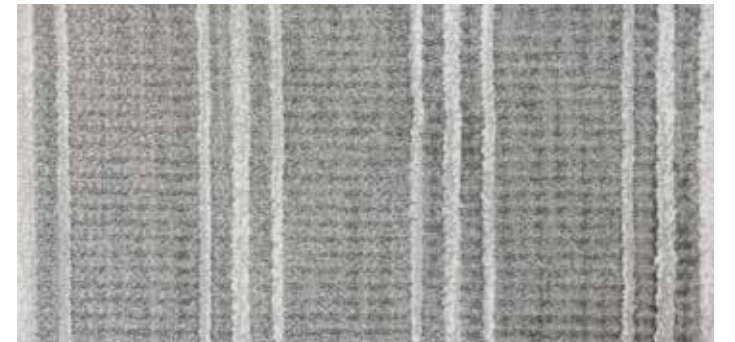
Indigo



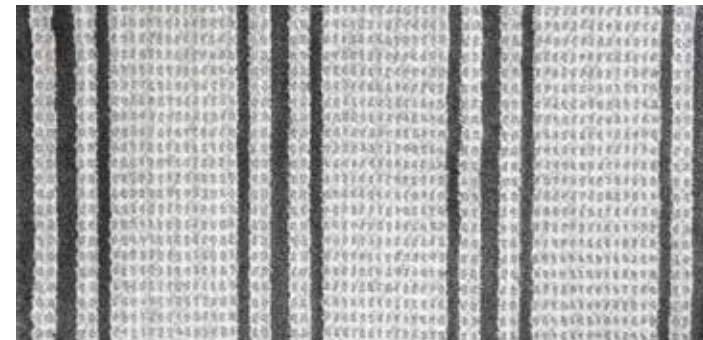
Wave



Ocean



Chrome



Flannel





# Lulubella

If you are looking to add a contemporary accent to your modern-day living space, Lulubella is for you. High shine and dimensional pile give this design intrigue. Like all of designs in the Bella Collection, this lovely abstract is high styled and easy to use. Lulubella is as cool as its name.



Bella Collection • SD Royaltron™ Polypropylene/Polysilk • Face to Face • 13'2" Width



Alabaster



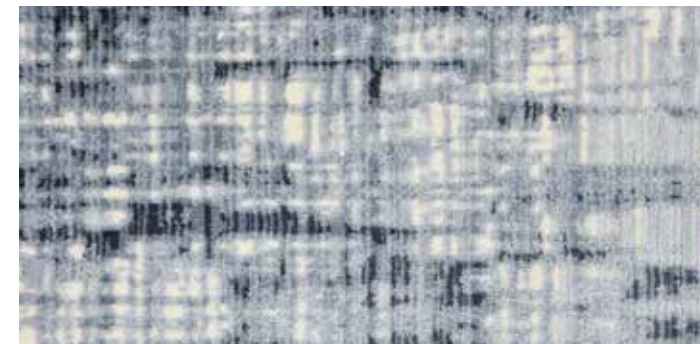
Wave



Golden



Ice



Ocean



Mink



Flannel





# Arabesque

Arabesque is an updated traditional that will turn heads. The classic scrollwork is beautifully balanced. Delicate patterning adds detail and complexity to this classical scroll. The diverse color range includes deep denim blues, timely rust reds as well as an array of compelling neutrals. Velvety cut pile adds a crisp and sophisticated finish.

Enchanted Collection • SD Royaltron™ Polypropylene • Face to Face • 13'2" Width



Antique



Cream



Linen



Vintage Teal



Metal



Earth



Steel



# Affection

Who says art is only for the wall? Affection's eye-catching design will be the focal point of the room. Chic high low construction. Dark denim blue mixed with camel and creamy beiges accented with rust are just a few new color combinations in this updated color line.



Expressions Collection • SD Royaltron™ Polypropylene/Polysilk • Face to Face • 13'2" Width



Silverfox



Dune



Wave



Autumn



Oxford Blue



Graphite





# Gotham Collection

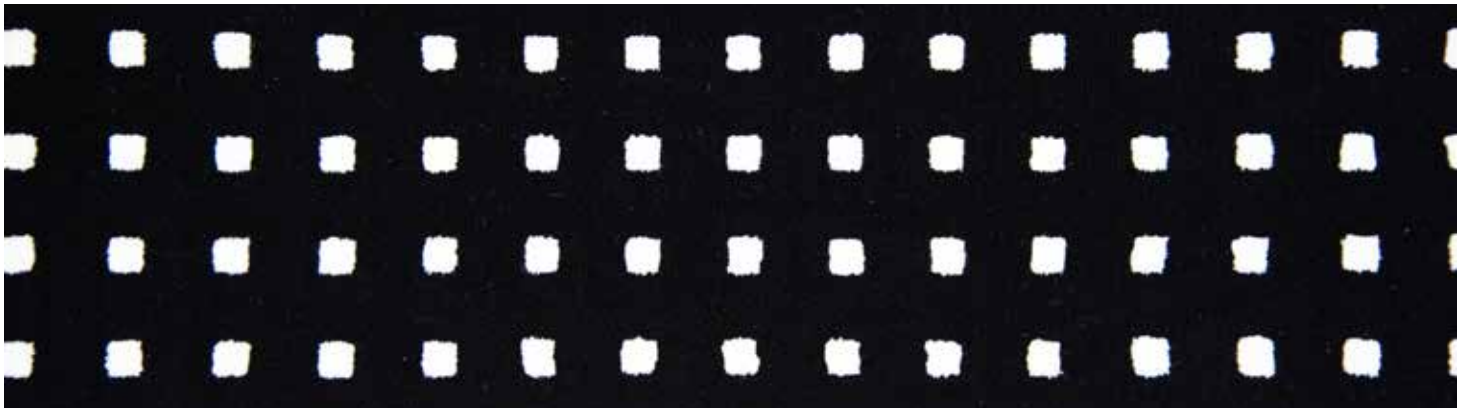
Design is a mix of beauty and balance. Combining black and white perfectly embodies this concept. The Gotham Collection, containing 2 boards that feature 6 breathtaking black and white styles.



Gotham Collection • SD Royaltron™ Polypropylene • Face to Face • 13'2" Width



**Gotham Lane** The slight sway of the broken chevron patterning in Gotham Lane gives a truly refreshing look to a more classic design. Texturing adds depth and dimension. You just can't look away!



**Gotham Square** Gotham Square is modern geometry at its best. With its precise square motif, the structure and simplicity of this design is what makes it so chic.



**Gotham Skyline** Gotham Skyline features a noteworthy abstract texture. Clean light patterning against the dark rich ground creates a bold pop. The vertical nature of this design leads our eye across the goods. Luscious high pile gives a polished finish.



# Gotham Collection (continued)

Gotham's high contrast black and white designs are bold, yet subdued, timeless yet of-the-moment. This collection is nothing short of eye catching.



Gotham Collection • SD Royaltron™ Polypropylene • Face to Face • 13'2" Width



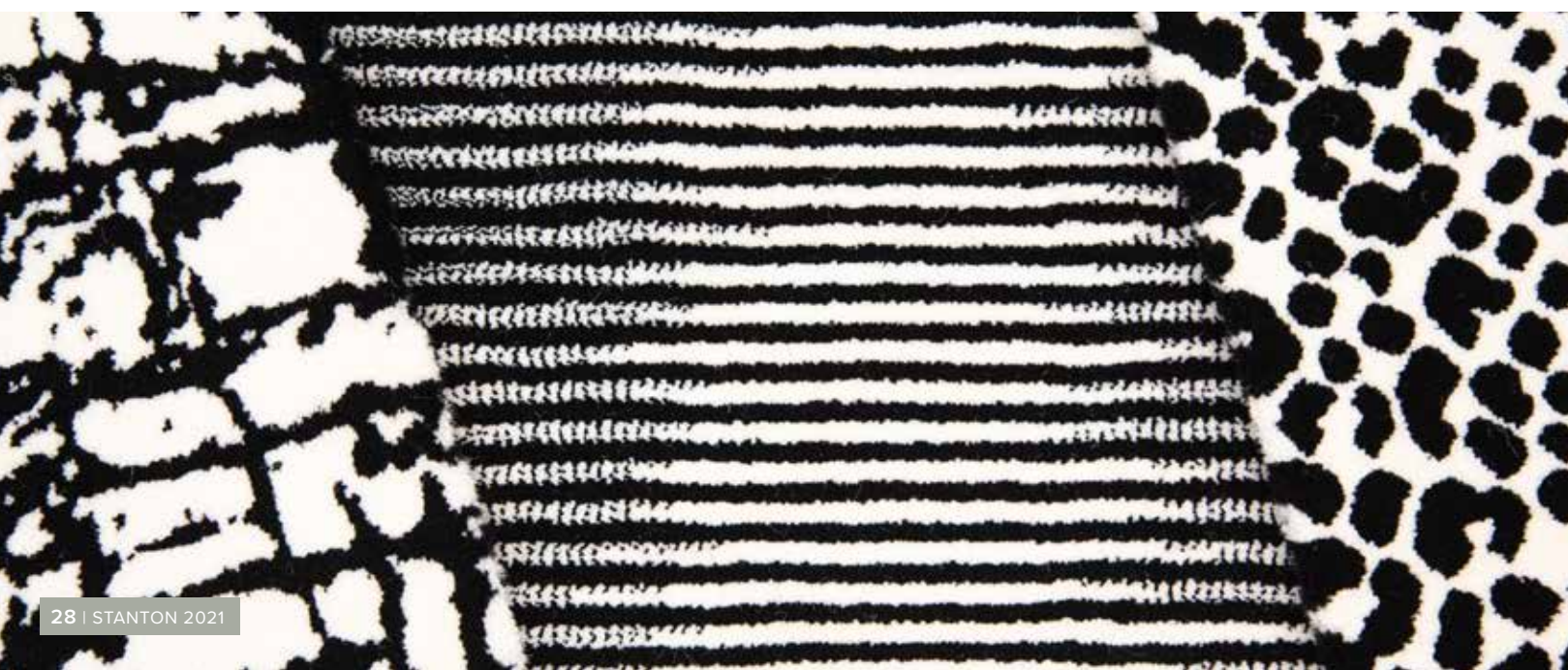
Gotham Fade

Gotham Fade is everything you could want for your statement staircase. This modern design seamlessly blends from black to white creating an ombre effect. Velvety pile provides a crisp modern finish.



Gotham Cheetah

This swanky skin is all the rage. Gotham cheetah is a posh take on an animal design. The striking patterning will add glamor and allure to a bedroom or staircase. It's sure to be the cat's meow.



Gotham City

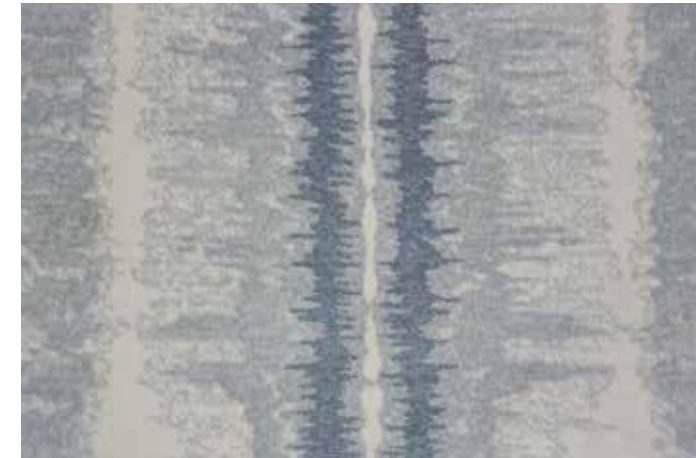
Another fantastic abstract texture rounds out the offerings. The bright white adds lightness and radiance... the perfect ground to showcase the dark saturated crackle texture. Gotham City is totally Mod.



# Safari King

The Kilimanjaro Collection took off in 2019 and this year we are thrilled to add Safari King to the assortment. This daring and remarkable piece is the epitome of statement carpet. The lush cut pile shows off the complex detail and color livens up this linear animal-like pattern. Safari King will give an artful touch to any staircase or runner!

Kilimanjaro Collection • SD Royaltron™ Polypropylene • Face to Face • 13'2" Width



Opal



Wildroot



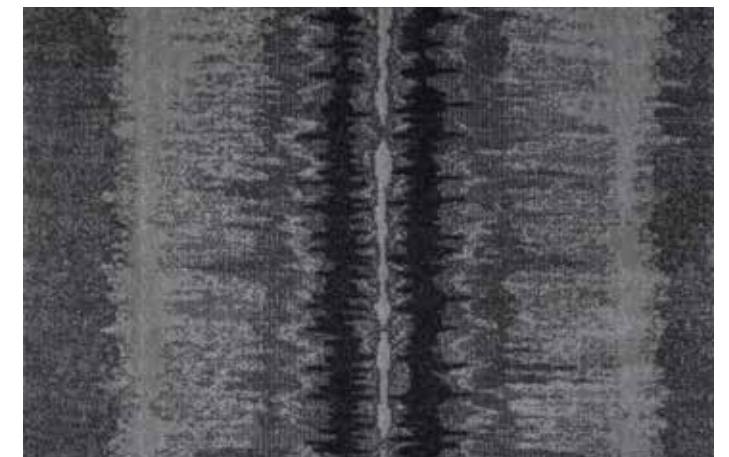
Inked



Desert



Marine



Flannel



# Glam Rock

Glam Rock, a dynamic texture, uses daring accents of color to lead your eye around the goods. Unique distressing gives that texture an edgy twist.

Rock Fusion Collection • SD Royaltron™ Polypropylene/Polyester • Face to Face • 13'2" Width



Shadow



Spice



Arctic Blue



Emerald Sea



Metal



Golden



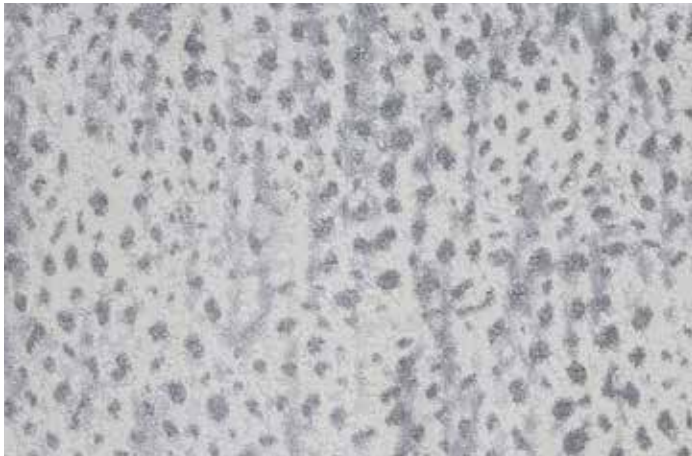


# Pop Rock

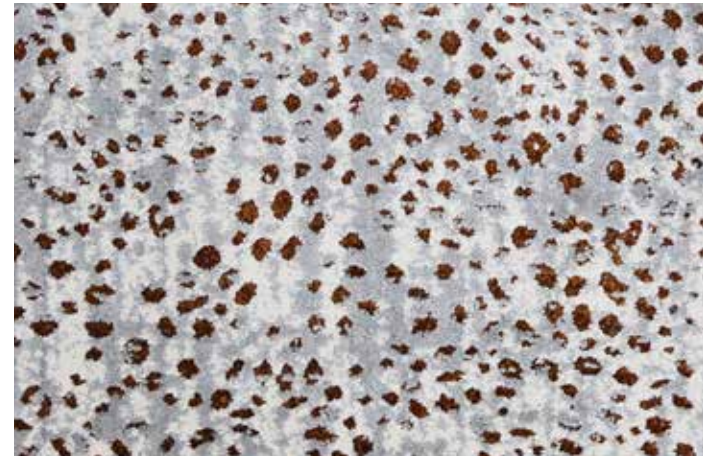
This striking design has an animal like feeling. With skins being so versatile, we are confident this playful pattern will hit the ground running. Well balanced, easy to use, competitively priced... Pop Rock is 2021's Rock Star.



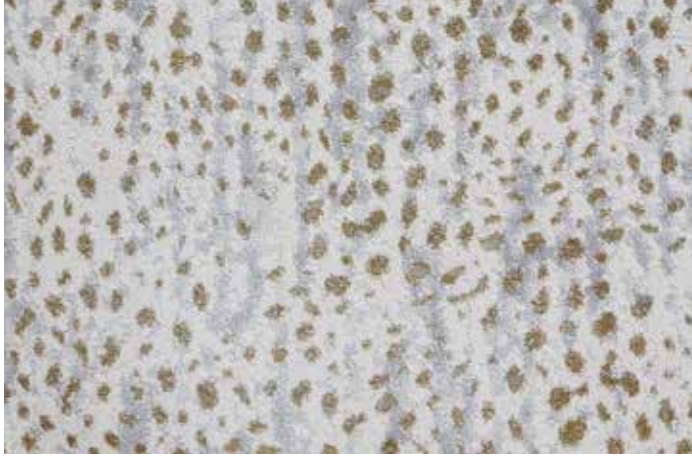
Rock Fusion Collection • SD Royaltron™ Polypropylene/Polyester • Face to Face • 13'2" Width



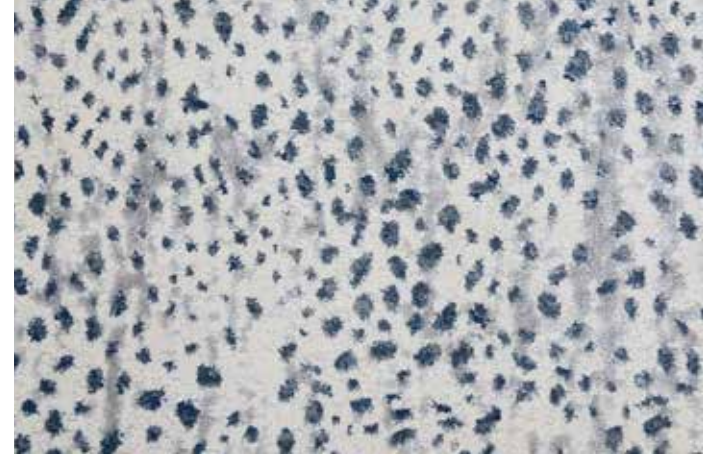
Shadow



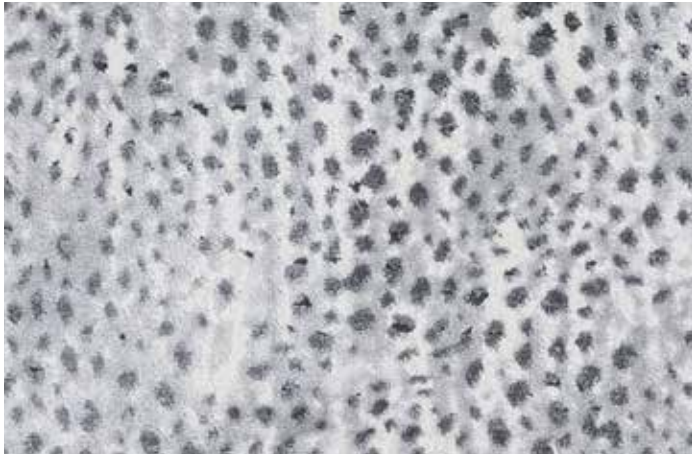
Spice



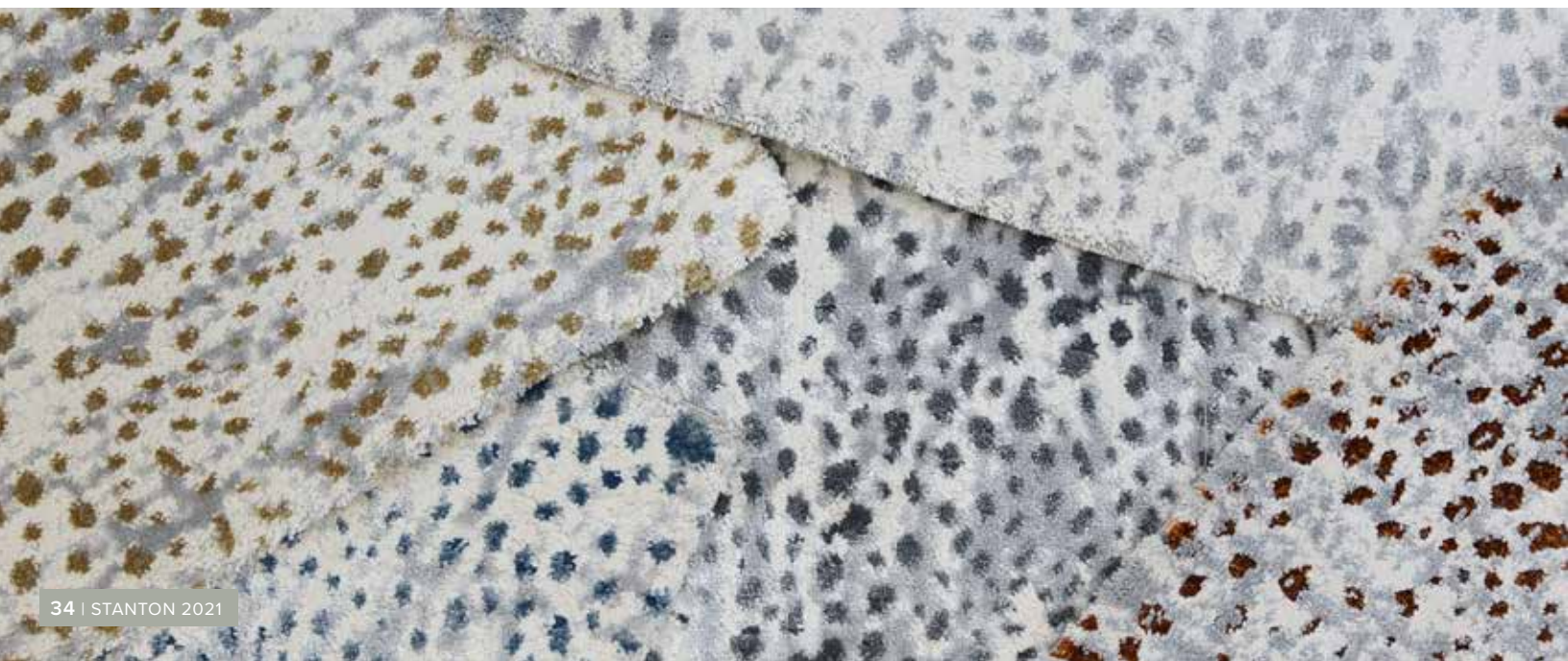
Golden



Arctic Blue



Metal





# Rock and Roll

The play of high and low pile gives Rock and Roll fine delicate detailing. This striking horizontal abstract makes a statement without overwhelming. The mix of color and texture create a unique and vintage look.



Rock Fusion Collection • SD Royaltron™ Polypropylene/Polyester • Face to Face • 13'2" Width



Shadow



Metal



Spice



Golden



Arctic Blue





# Aerial

Inspired by hand tufted construction, Aerial is a multi-colored all over texture with a handmade feel. High low pile gives the pattern depth and definition. The well-balanced colorations complement any style.



Vue Collection • SD Royaltron™ Polypropylene/Polysilk • Face to Face • 13'2" Width



Antique



Sterling



Vintage



Steel Blue



Autumn



Glacier





# Candid

Candid, a transitional take on a classic herringbone pattern, is an easy choice for a range of interior design styles. The high low pile accentuates the design's clean, crisp edges. Candid is available in a range of sophisticated neutrals and classic blues.



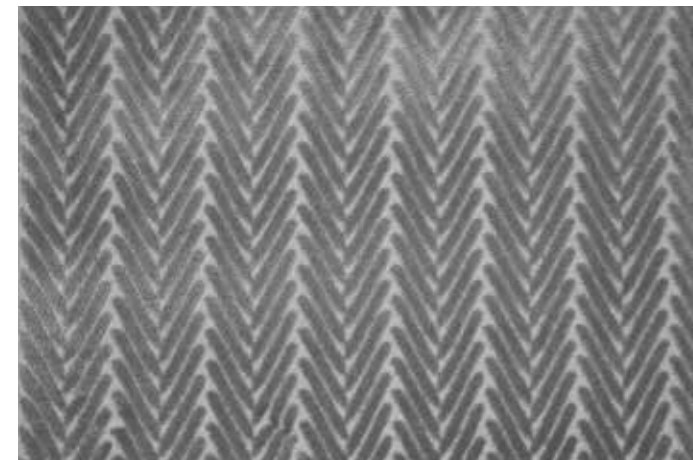
Vue Collection • SD Royaltron™ Polypropylene/Polysilk • Face to Face • 13'1" Width



Chrome



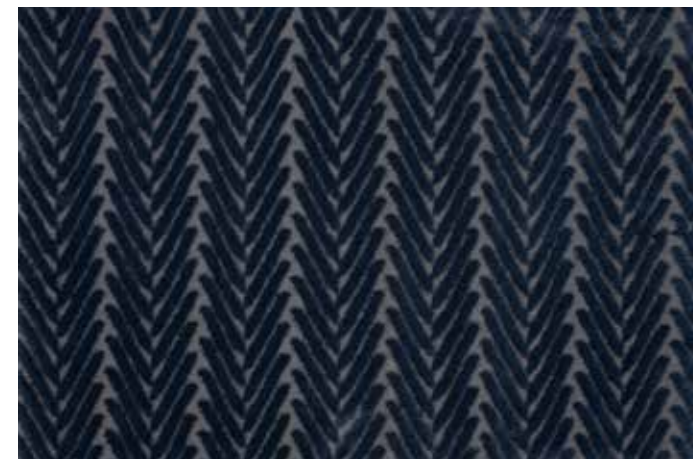
Parchment



Sterling



Glacier



Steel Blue





# Juxtaposition

Juxtaposition, an inventive take on an ombre, is not your average stripe. Soft soothing colors blend from one to another across the width of the goods. High low pile adds texture and visual interest.



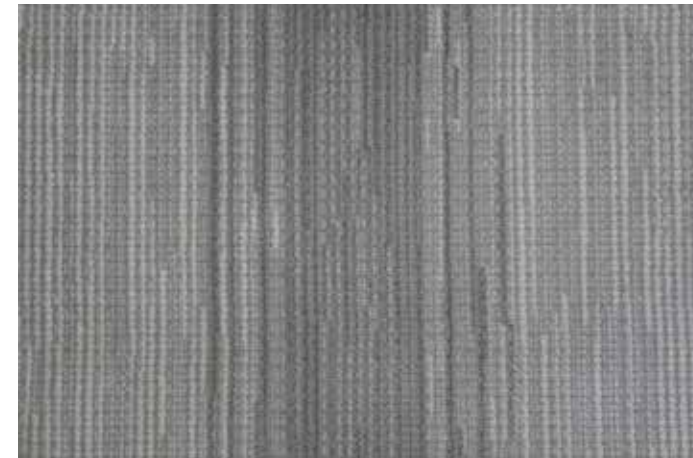
Vue Collection • SD Royaltron™ Polypropylene/Polysilk • Face to Face • 13'2" Width



Sterling



Glacier



Antique



Autumn



Steel Blue





# Landscape

Landscape, the name says it all. The eye travels easily throughout the design's metaphorical landscape. Understated texture creates a vintage inspired look. Velvety cut pile creates a clean polished finish.



Vue Collection • SD Royaltron™ Polypropylene • Face to Face • 13'1" Width



Vintage



Glacier



Sterling



Autumn



Steel Blue





# Leading Lines

Leading lines, a decorative plaid design, feature lustrous yarns, inspiring colors, and high low pile. Beautiful detailing and a great scale lead to absolute perfection. An easy choice for both traditional and transitional interiors.



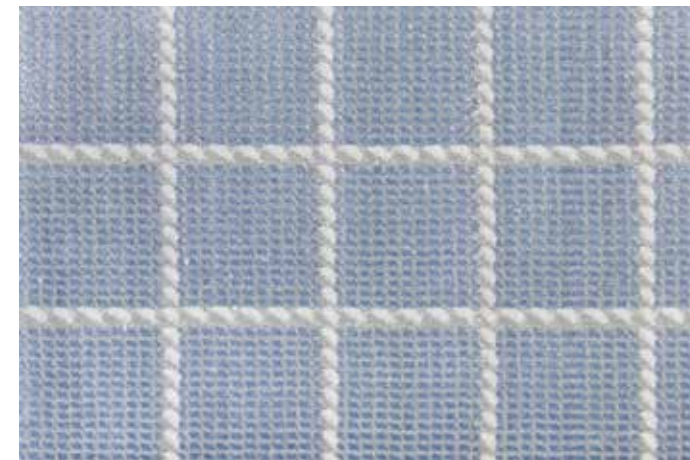
Vue Collection • SD Royaltron™ Polypropylene/Polysilk • Face to Face • 13'1" Width



Sterling



Vintage



Glacier



Autumn



Chrome



Steel Blue



# Panoramic

From your living room to your bedroom. With the demand for abstract designs in today's marketplace, Panoramic is another dimensional design that can go anywhere.



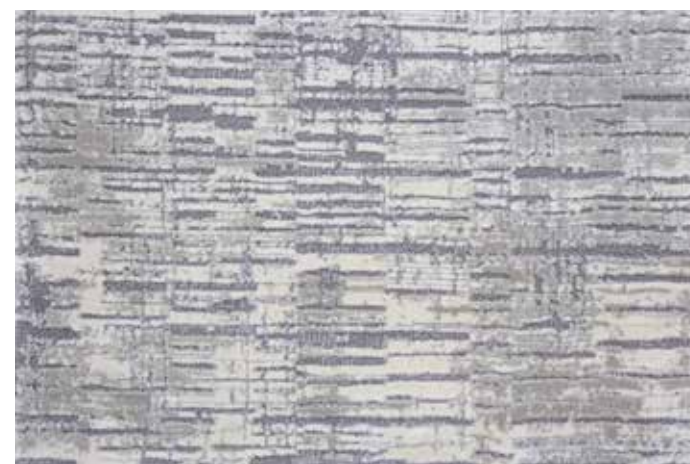
Vue Collection • SD Royaltron™ Polypropylene/Polysilk • Face to Face • 13'2" Width



Antique



Vintage



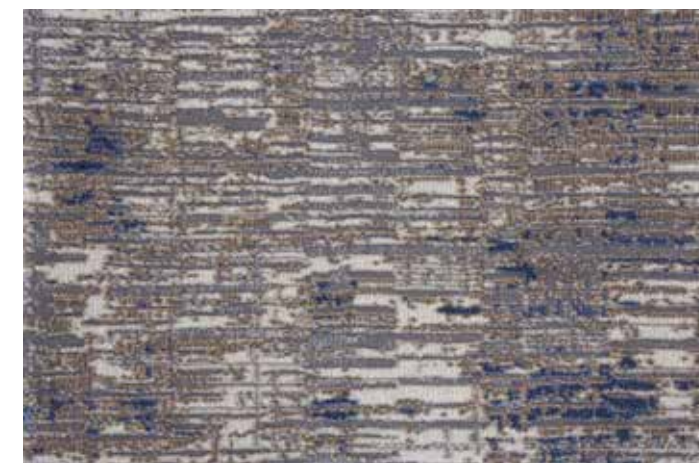
Chrome



Parchment



Steel Blue



Dune





# Pixel

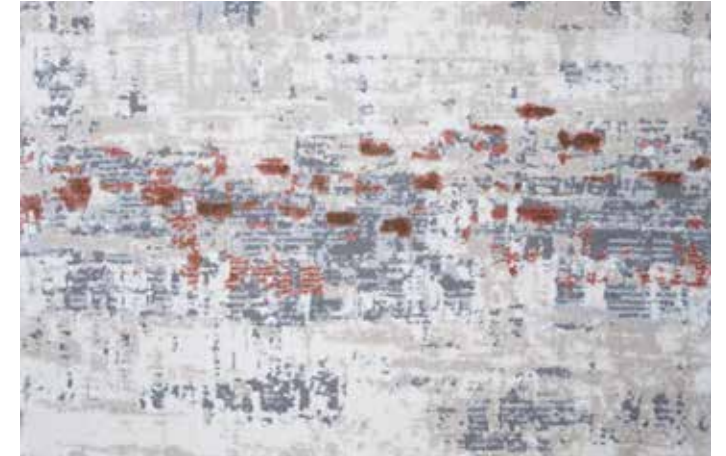
Pixel, a beautiful horizontal abstract makes quite a statement. Small, simple accents of color make this style pop while remaining easy on the eyes. The yarn's high sheen gives Pixel a radiant glow.



Vue Collection • SD Royaltron™ Polypropylene/Polysilk • Face to Face • 13'2" Width



Antique



Vintage



Glacier



Sterling



Steel Blue

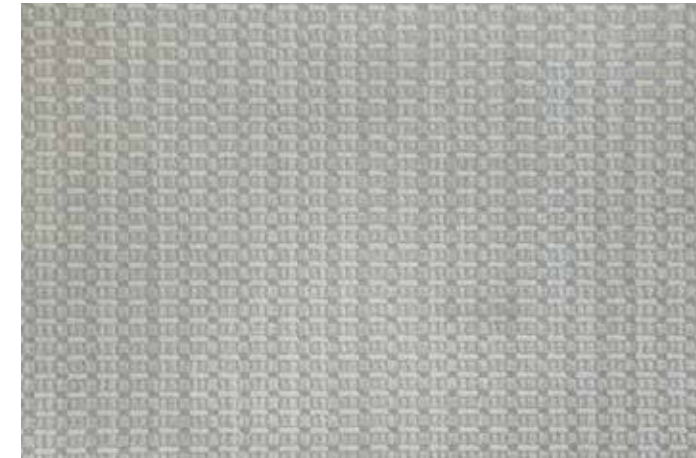


# Resolution

Resolution was inspired by the small-scale distinctive patterns created by dobby loom constructions. The refined texture is simple yet sophisticated. Resolution is versatile and easy to design a room around.



Vue Collection • Royaltron™ Polypropylene/Polyester • Face to Face • 13'1" Width



Antique



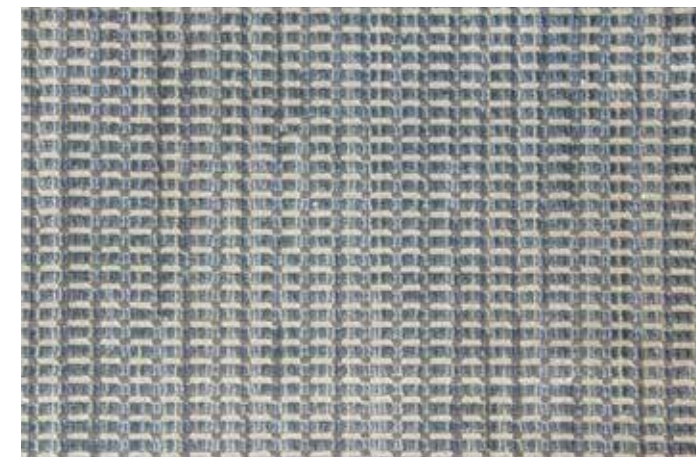
Honey



Sterling



Autumn



Steel Blue



# Atelier Display

Atelier offers the absolute best nylon assortment in the industry.



Atelier's best of 40-pin display offers the flexibility to showcase this program in a compact, modern way

- Featuring well over 40 products, backed by extended warranties for both residential and commercial applications.
- High style designs in geometric, textured and abstract patterns including SUPERSOFT nylons and select STAINMASTER PetProtect, 3M Scotchgard™ protector and STAINSAFE™ carpet programs

**MATERIAL** Light Grey Laminate

**DIMENSIONS** 4'9"W x 5'5"H x 3'4"D

**PRODUCT SAMPLES:** Holds 40 Sample Boards, 24"W x 36"L





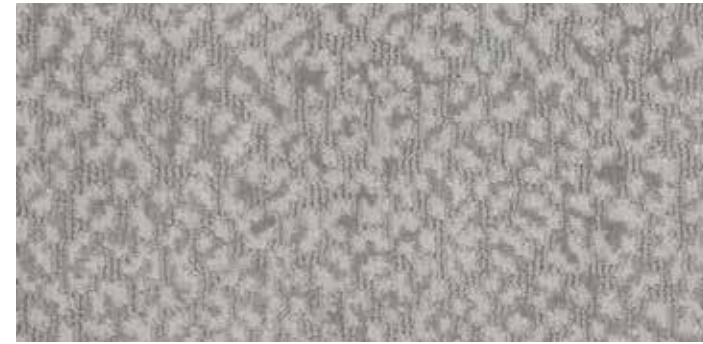
# Adventure



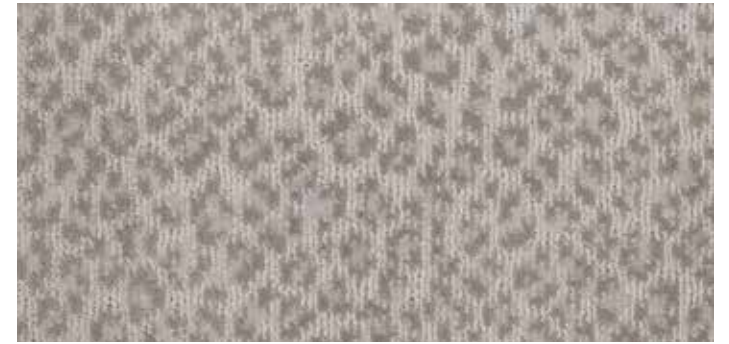
Atelier

Adventure is a machine tufted leopard design done a clever cut and loop construction. Glowing yarn gives this design life. Deep navy, bright denim blue, cool silver and warm neutrals make a well-rounded color line. Solution dyed nylon allows for high performance and competitive pricing. Consider this leopard for your next design adventure!

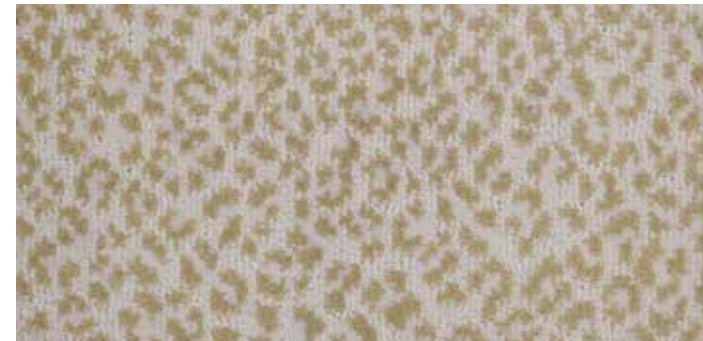
Atelier Enterprise Collection • SD Nylon • Machine Tufted • 13'6" Width



Platinum



Oyster



Golden



Wedgewood



Taupe



Chrome



Marine







# Ambition



Atelier

Looking for a gorgeous abstract perfect for a family room, playroom, or staircase? Ambition is the carpet for you. Dynamic patterning and delightful colors set Ambition apart from the crowd. The solution dyed nylon gives us all the performance properties with a high styled look. Contemporary or transitional, the abstract texturing of Ambition is sure to be a great fit.

Atelier Enterprise Collection • SD Nylon • Machine Tufted • 13'6" Width



Oyster



Platinum



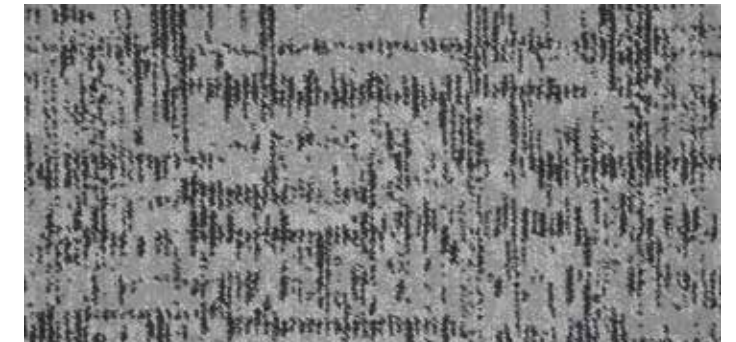
Golden



Wedgewood



Taupe



Chrome



Marine







# Vigor



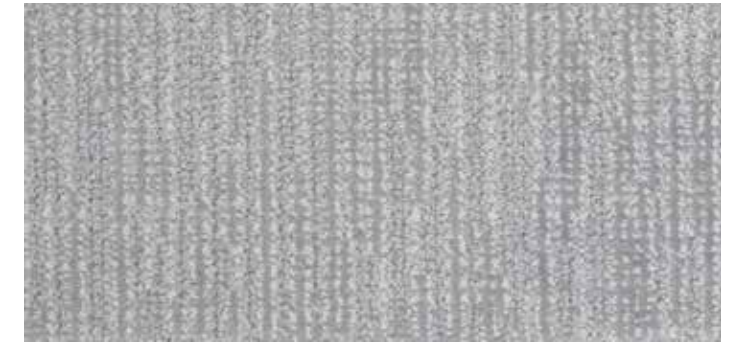
Atelier

Vigor is multifaceted texture. Two colors of solution dyed nylon work beautifully together to create the intricate cut and loop patterning. Lustrous yarn adds brightness and shine to this intriguing product. Fresh color range. High performing yarn system. Affordable pricing. What's not to love about Vigor.

Atelier Enterprise Collection • SD Nylon • Machine Tufted • 13'6" Width



Oyster



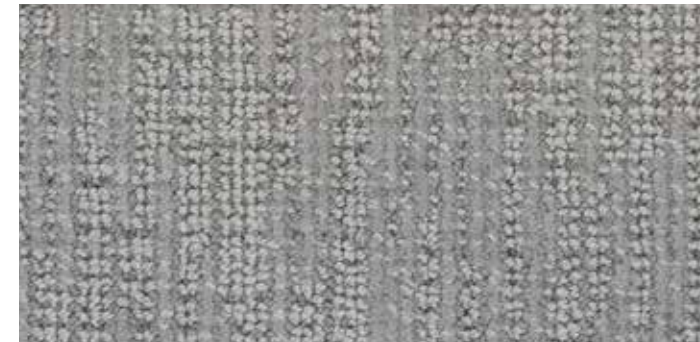
Platinum



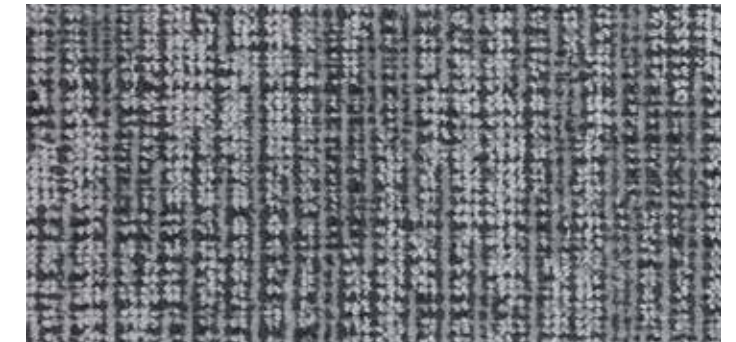
Golden



Wedgewood



Taupe



Metal



Marine





# Jive

Jive will literally dance on your floor. The dynamic linear texturing is infused with style. The velvety cut pile exquisitely complements Jive's serene and tranquil color palette. The nylon composition boosts performance making this an easy selection for any room, from family room to playroom.



Atelier Marquee Collection • Nylon • Printed • 13'2" Width



Cloud



Oyster



Dune



Sky



Flint



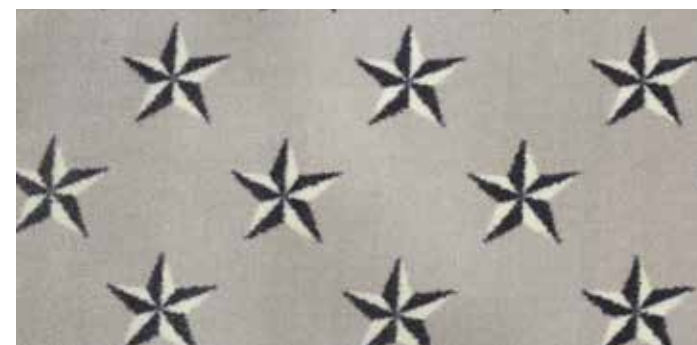


# Starstruck

Starstruck has us seeing stars! This fun and whimsical print is a fantastic choice for a huge range of applications. From kids' room to nautical beach house Starstruck gets 5 stars. Well performing nylon construction. Clean, crisp lines and classic colorations give this print a handsome and timeless look.



Atelier Marquee Collection • Nylon • Printed • 13'2" Width



Ecrú



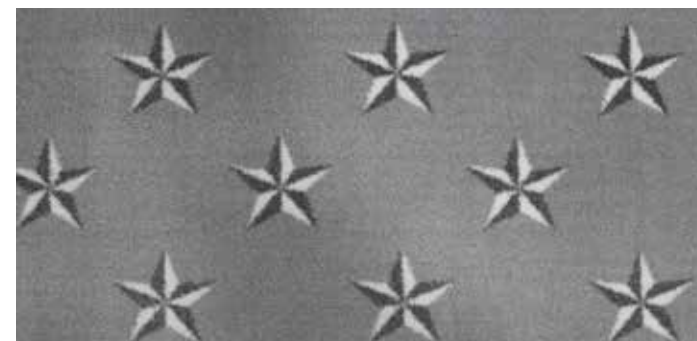
Sand



Ruby



Denim



Sterling



Iron



Navy





# Waltz

High style and great performance at a competitive price... Waltz has the magic. This chic grid like texture has just the right amount of movement to delight the eye. The high cut pile is soft and smooth creating a sumptuous hand. The most appealing colors round out this range. Let this beauty waltz right into your living room!



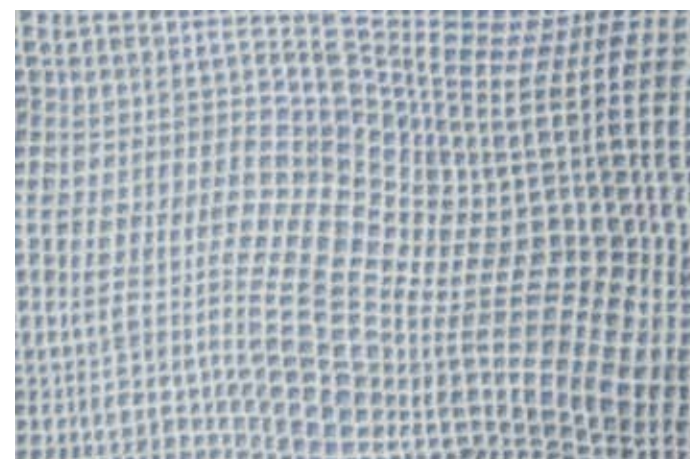
Atelier Marquee Collection • Nylon • Printed • 13'2" Width



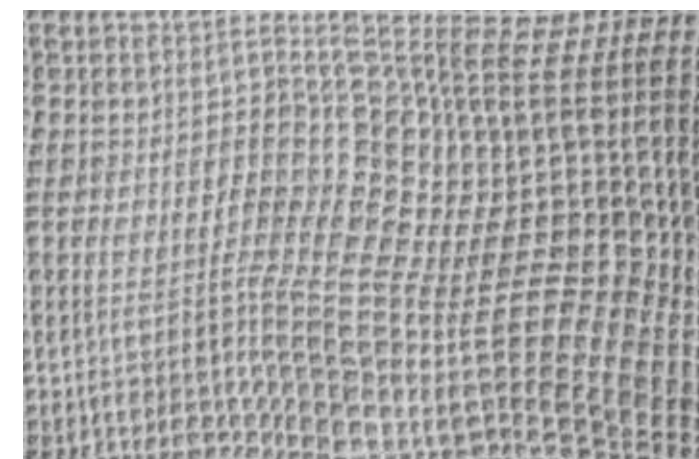
Cloud



Dune



Sky



Chrome



Carmel



Indigo





naturally green  
Featuring Textured Wools

Design & Performance  
Featuring Indoor | Outdoor



**INITIAL PACKAGE:**  
20 Boards + 3 Finishing Boards  
(1 Slide-In) \*includes 2021 updates



**INITIAL PACKAGE:**  
24 Boards + 3 Finishing Boards  
(1 Slide-in) \*includes 2021 updates

**Wool Textures** – Refined textured wools and wool blends showcasing modern classics and transitional styles; the perfect backdrop for any interior setting.

**Design & Performance** – Dynamic patterns and textured weaves meets high performance / low maintenance fibers including indoor / outdoor; the perfect combination for today's design conscious, active lifestyle consumer.

Each display is compact making it highly adaptable to your showroom space. It comes well equipped with 4 finishing boards to assist in the perfect made to order area rug, hall/stair runner, or wall-to-wall carpet.

**DIMENSIONS:** 3'10"W x 6'8"H x 24"D

**BOARD SIZE:** 20" x 28"

**BOARD CAPACITY:** 30 Pin Capacity per unit





# Cruise

Cruise is a lovely addition to our indoor/outdoor offerings. This multicolored texture is versatile and complex. Beautifully striated yarns run through the goods giving this flatweave a heathered effect. Soothing blues and soft neutrals make up the color range. Let Cruise transform your outdoor space.



Castaway Collection • UV Stabilized Royaltron™ Polypropylene • Machine Woven • 13'1" Width



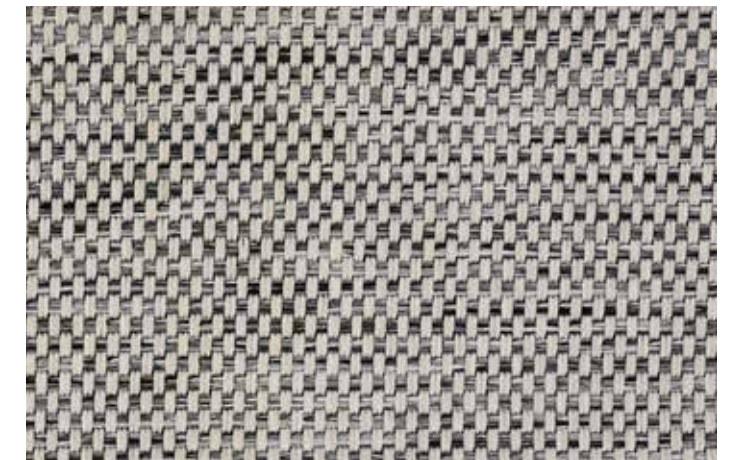
Platinum



Teak



Lagoon



Black Sand

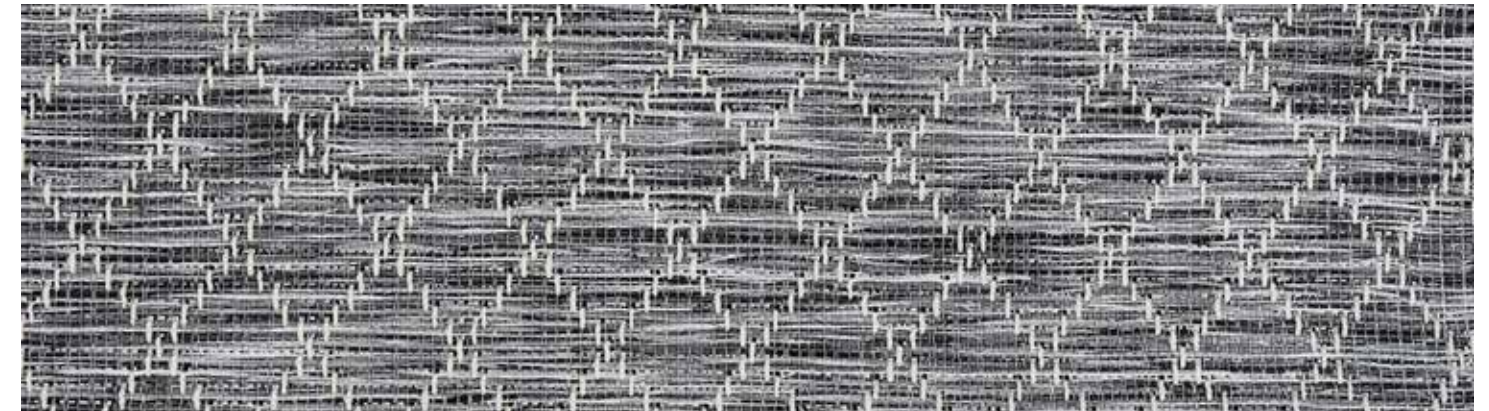




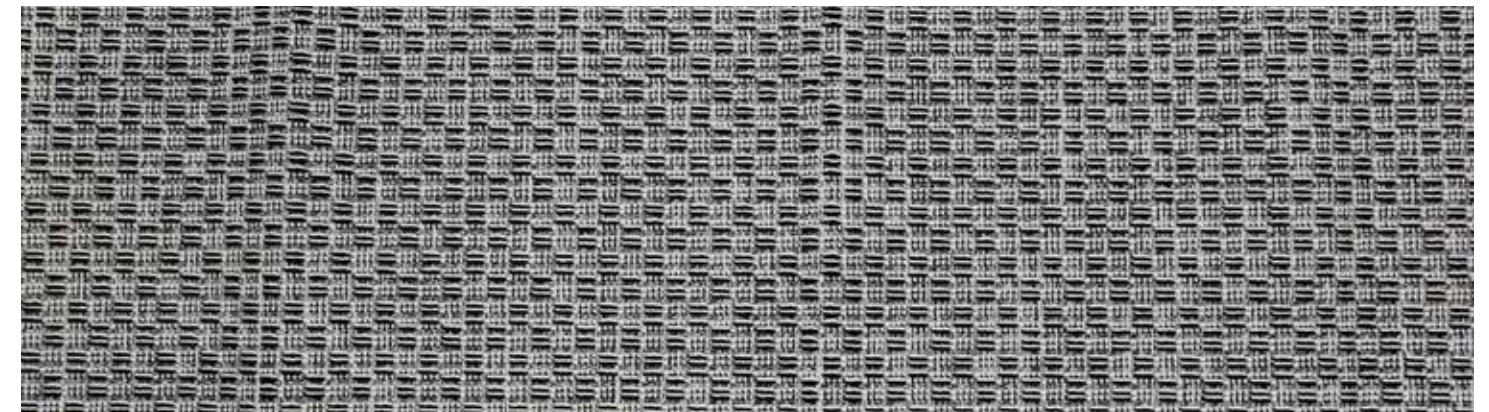
# Jet Set Collection



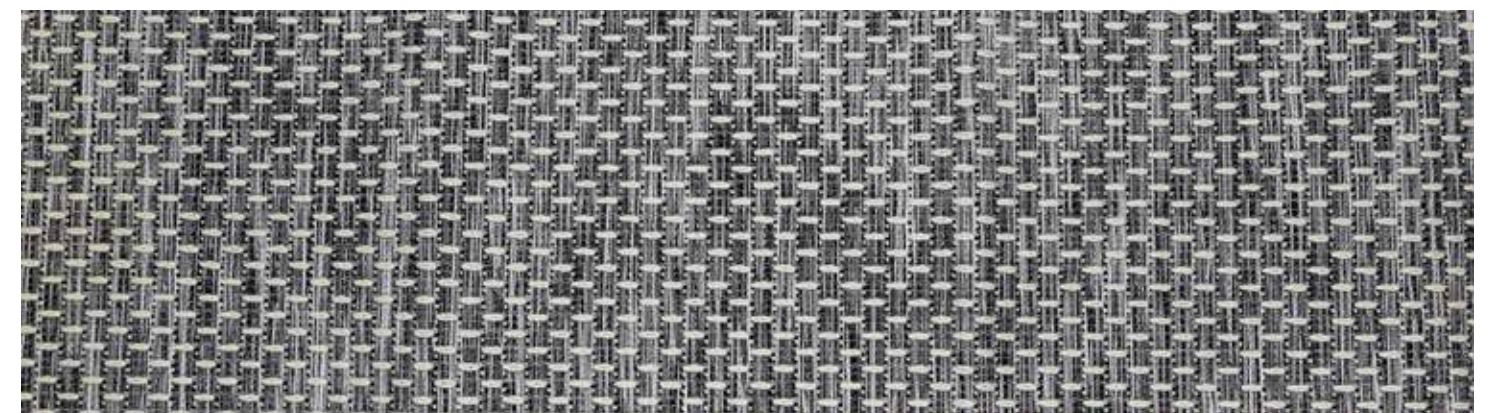
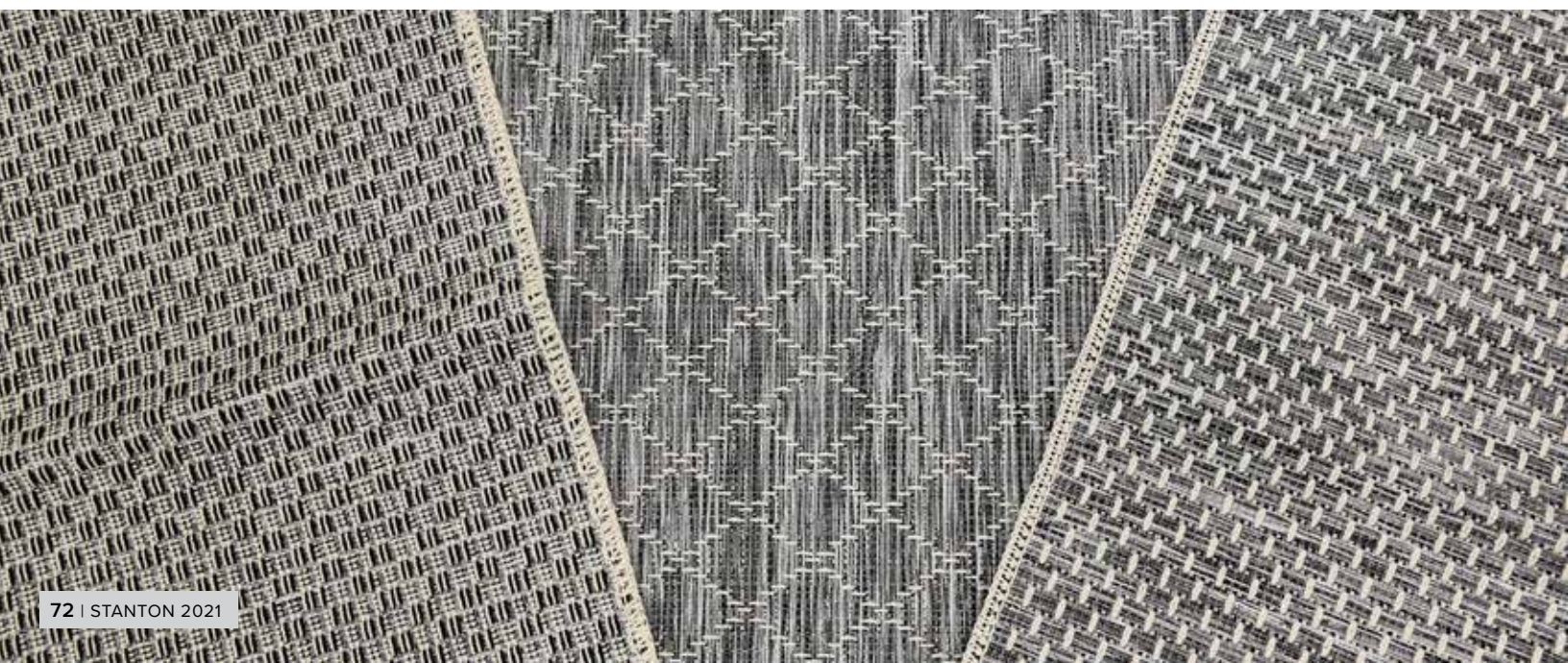
Castaway Collection • UV Stabilized Royaltron™ Polypropylene • Machine Woven • 13'1" Width



**Jet Set Diamond — Tuxedo** Jet Set Diamond is a fresh take on a classic trellis. The black and white ground is bold and exciting. The intricate mixing of black and white fibers creates a lovely mélange effect in the ground allowing the bright white trellis to pop. Suitable for indoor and out, Jet Set Diamond is the perfect flatweave for a sunroom, veranda or out by the pool.



**Jet Set Mood — Tuxedo** Jet Set Mood is a delightful indoor outdoor flatweave. Black and white yarns blend smoothly together to create the dynamic ground texture. The intricate patterning adds refinement and sophistication. This sharp, stylish look will complement any design style from transitional to contemporary.



**Jet Set Vibe — Tuxedo** Jet set vibe is a simple yet exciting texture. The clever weave structure gives the impression that the pattern is hand stitched throughout the flatweave. The heathered effect created by the black and white yarns gives this bold coloration a touch of softness. A hip, timely choice for any outdoor space.





# Boca Chica

Boca Chica's subtle diamond weave gives just the right hint of patterning. Great performance accompanies this truly smart look. Dynamic striated yarns are pleasing to the eye. Boca Chica will compliment any sunroom, pool, or garden.



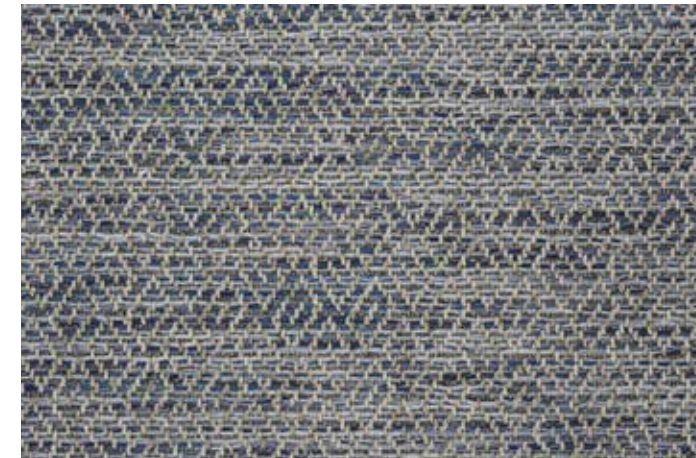
Four Seasons Collection • UV Stabilized SD Royaltron™ Polypropylene • Machine Woven • 13'2" Width



Frost



Shell



Ocean



Burnt Umber



Raven



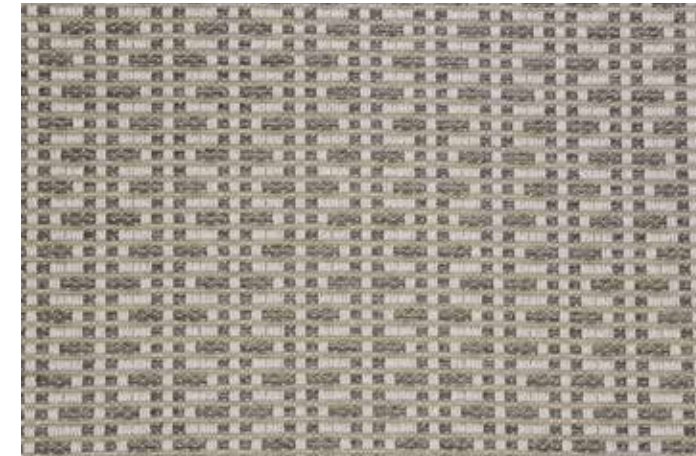




# San Felipe

San Felipe is a high class take on a traditional key design. This vertical geometric features glowing, lustrous yarns. Colors range from silver grey to a bright eye catching blues and aquas. Rich sisal colors provide a natural essence. This high performing flatweave makes a splash, both inside and out.

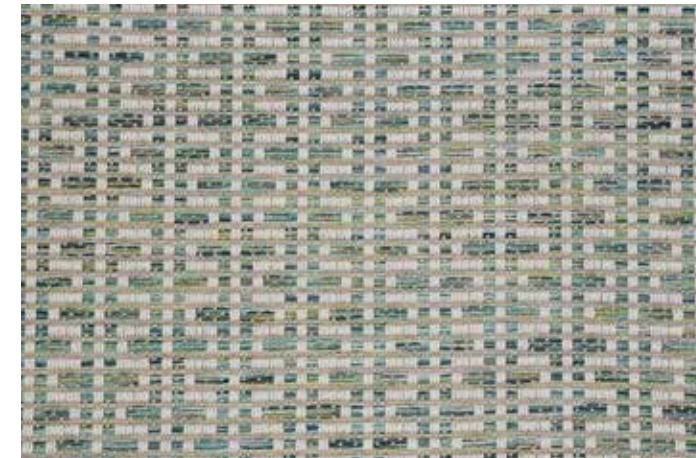
Four Seasons Collection • UV Stabilized SD Royaltron™ Polypropylene • Machine Woven • 13'2" Width



Frost



Shell



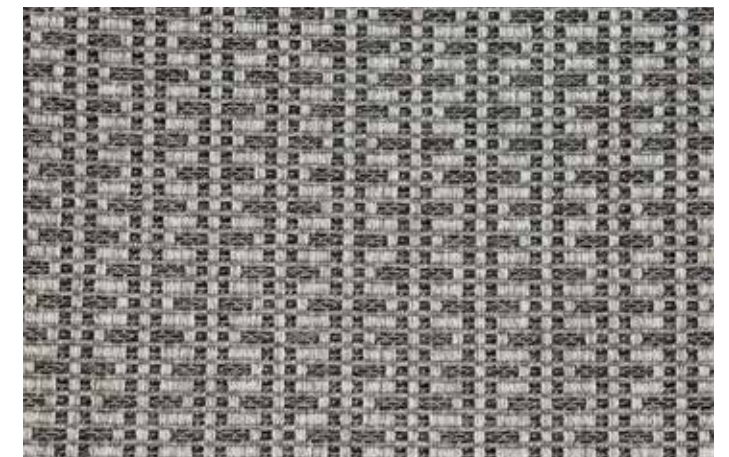
Lagoon



Burnt Umber



Ocean



Raven

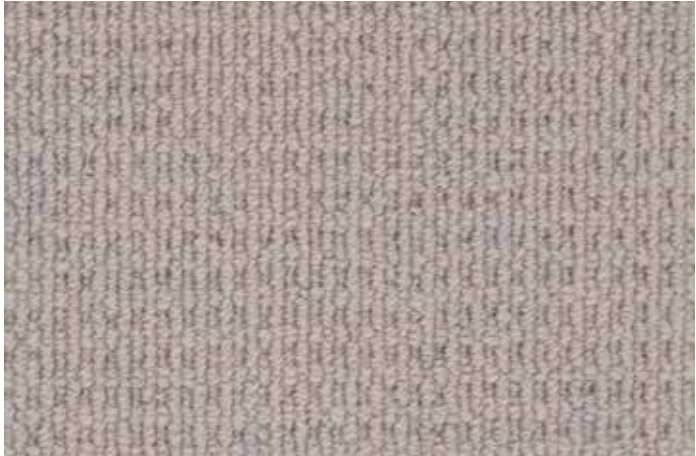




# Bradley

Bradley is a handsome wool loop texture with a subtle pattern effect. Sister product to Elton, Bradley uses the same high quality yarn system. Beautiful and simple neutrals make up this color range. Bradley's chic look and soft hand make it a clear choice for any home and any lifestyle.

Natural Wonders Collection • Wool • Machine Tufted • 13'2" Width



Oyster



Buff



Sand



Fossil



Flint



# Elton

Elton is a clean, polished machine tufted texture. The bright luminous wool and the refined loop construction give Elton just the right amount of style. The color range, consisting of easy-to-use neutrals, makes this product a delightful addition to any interior.

Natural Wonders Collection • Wool • Machine Tufted • 13'2" Width



Oyster



Sand



Buff



Fossil



Flint



# Stantonb2b.com

24/7 customer service functions that can be completed with a few clicks!

Easier,  
Simpler,  
Faster!



**Check Stock. Reserve Stock. Place your Broadloom or Rug Order.**



### Resource Library

- Images for marketing and advertising
- Installation guidelines



**View Roll & Remnant Specials and Check Discontinued Products.**

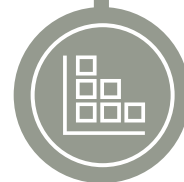


### Pricing

- Mark up feature
- Export your pricing



### Order Swatches.



### Create a RUG

Your Style. Your Size. Your Home.

OUR MOST ADVANCED FEATURE

- Details on next page

# Create a RUG

Your Style. Your Size. Your Home.

**1** Select a Carpet Style & Color on [www.stantonb2b.com/createarug](http://www.stantonb2b.com/createarug)

**2** Select from any of our Finishing or Binding Options:



Modern Edge Serging



Hand Serging



Machine Serging



Cotton Binding  
(2 3/4" & 4 3/4" widths)

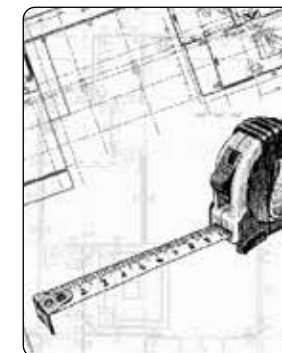


Linen Binding  
(4 3/4" widths)



Alfresco  
(Indoor | Outdoor)

**3** Choose your Size (any length up to the full width of the carpet)



**4** Choose your Attached Padding:



NUBOND™ Felt Backing



NUBOND™ Non-Skid Backing



NUBOND™ Outdoor Backing

**5** Place Your Order!



# Stocked Rugs

Your Style. Your Size. Your Home.

# Visualize It

Designed by YOU, styled by STANTON

Cable Beach Rug Available in 6 x 9 | 8 x 10 | 9 x 12

Indoor | Outdoor\*



Shown in Moss



Sand



Moss



Taupe



Metal

Fab Shag Rug Available in 8 x 10 | 9 x 12



Shown in Cloud



Flash



Cloud



Ivory White



Sea Salt



Stone

Fab Shag Diamond Rug Available in 8 x 10 | 9 x 12



Shown in Stone



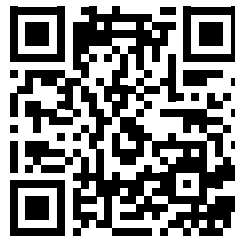
Sea Salt



Stone

Envision your space instantly incorporating all Stanton Flooring has to offer. Choose our luxury vinyl layered with your favorite area rug, or perhaps wall-to-wall carpet is more your taste. You can even style your stairs all with our new visualization technology!

VISUALIZE IT! Visit [stantoncarpet.visualiseitnow.com](http://stantoncarpet.visualiseitnow.com) or scan the QR code.



**Step 1.** Upload your own photo, choose an image from your files, or select a stock room of your choice.



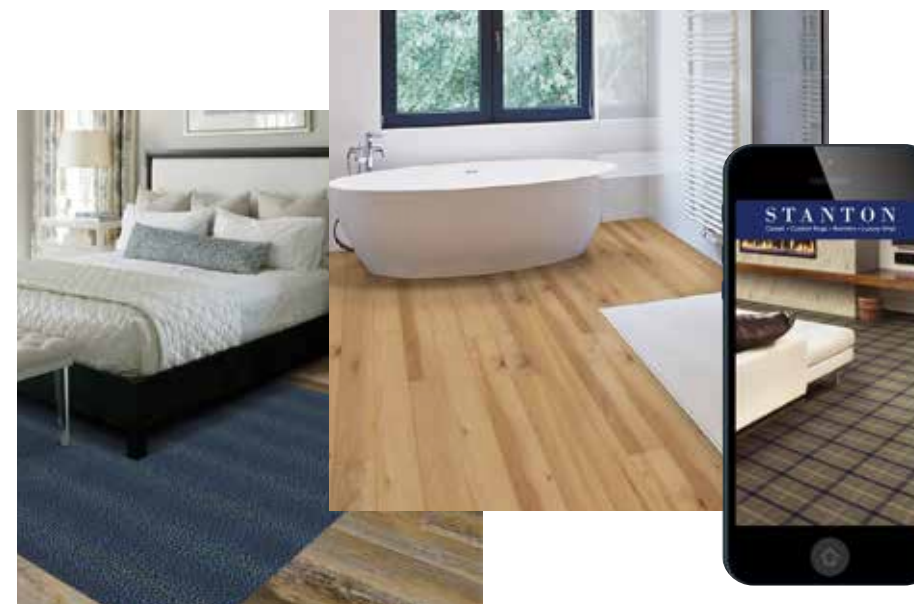
**Step 2.** Select your product (choose from Luxury Vinyl, Carpet, or Rugs) including color and pattern (You can even layer a rug over your Luxury Vinyl!)



**Step 3.** Can't decide between two styles? Use the slider comparison feature to see them side by side to help you with your choice.



**Step 4.** Save your newly designed space to share via email or create a PDF with all the product information included.



## #StyleMy STANTON

**Snap It, Tag It, Share It!**

Share your newly designed space on Instagram & use the hashtag #StyleMyStanton for a chance to be featured on our social media!





## Layer Your Look

Pair your rug with any of our Stanton Decorative Waterproof Flooring styles for a truly customized space. Visit our Decorative Waterproof Flooring display. [www.stantonflooring.com](http://www.stantonflooring.com)

Floor: Woodlands Toasted Oak | Rug: Fab Shag in Flash





**STANTON**

Carpet + Custom Rugs + Runners + Luxury Vinyl

New Introductions 2021

*Atelier*<sup>®</sup>  
by STANTON