

# RFUSION

TOMORROWS TECHNOLOGY TODAY

**300W Power Tower**



**300W Ruggedised  
Power**



## R Power when you need it

R Power is one of the world's first integrators to use a non-glass, UL certified crystalline PV modules. The module's multi-layered structure provides excellent resistance to harsh environmental conditions and the fluoropolymer front sheet protects the module from all chemicals.

# RFUSION

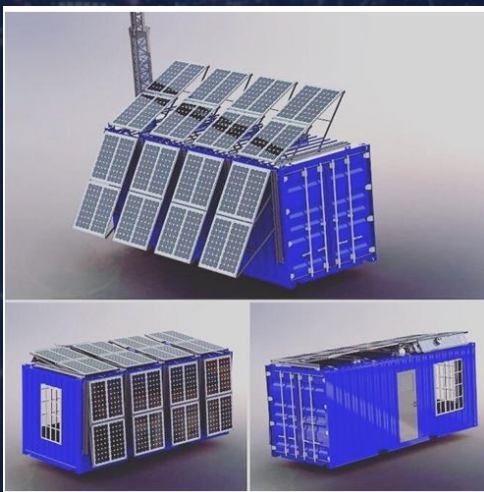
## TOMORROWS TECHNOLOGY TODAY



The R Power ruggedised power pack has been designed for use in arduous places where grid power is not readily available. The case is manufactured to IP66 ratings which encompass the input and output connections.



It is currently in use with several global military forces where it is used as an in field power supply unit to power a variety of equipment such as Forward Command Control Communications Systems, Emergency long term power for Medical Teams, CCTV systems for intrusion detection and alarming. It can also be used in static situations where long term power is required where unreliable or no grid power is available.



The unit is primarily charged using military grade non glass solar panels with a built in standby 230v AC charger as standard. The unit can also be fitted with a subsidiary input to allow it to be charged whilst being carried in a vehicle to ensure that the unit is fully charged on deployment. Customer specific packs can also be made.

Power Output:	300 Watt
Output Voltages	Factory adjustable from 5vDc to 24vDC
Battery Capacity:	500 Wh
Weight:	8,7 kg
Dimensions:	47 x 36 x 19 cm (L x W x H)
Charging Options:	230 Power Adapter, Car-Charging Cable, Solar Cell
Charging time with 230V:	2,5 h (approx)
Lithium-Iron phosphate-Battery	Usage Temperature 0°C bis +45°C
MPPT-System:	Use up to 95% of the Solar Energy
User Interface:	Membrane keyboard

