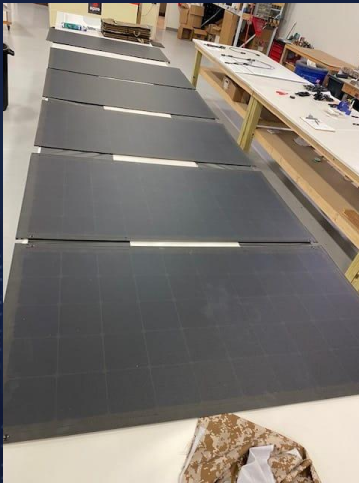


RFUSION

TOMORROWS TECHNOLOGY TODAY

Rfusion 170W Commercial panel



R Power is one of the world's first integrators to use a non-glass, UL certified crystalline PV modules. The module's multi-layered structure provides excellent resistance to harsh environmental conditions and the fluoropolymer front sheet protects the module from all chemicals.

IP67, UL1703 certified, IEC61215 Resistance tested.

Rfusion Limited www.rfusion.co.uk

RFUSION

TOMORROWS TECHNOLOGY TODAY

Panel Specifications

Rfusion Part Number:	RPC170
Panel Type:	Rigid Panel
Maximum Power (W): (+/- 5W)	170 W
Optimum Power Voltage (Vmp):	29.5 V
Optimum Operating Current (Imp):	5.75 A
Open Circuit Voltage (Voc):	35.0 V
Short Circuit Current (Isc):	6.01 A
Solar Cell Efficiency (%):	24%
Number of Bypass Diodes:	8
Number of Solar Cells:	48
Module Weight:	8.5 lb. (3.86 kg)
Solar Module Configuration:	6 x 8
Module Dimension (Open) (in):	43" x 32.5"
Module Area: (sf) (m²)	9.7 sf; (0.9m ²)
Module Efficiency:	18.8%
Nominal Operating Cell Temperature:	45 °C
Temperature Coefficient (Current):	-0.27%/°C
Operational Temperature Range:	-40 °C to 70 °C
Maximum System Voltage:	600 VDC
Maximum System Current:	15A
Junction Box Type:	Amphenol
Connection Protection Degree:	IP 67
Connector Type:	MC4
Anti-Glare / Anti-Reflection:	yes