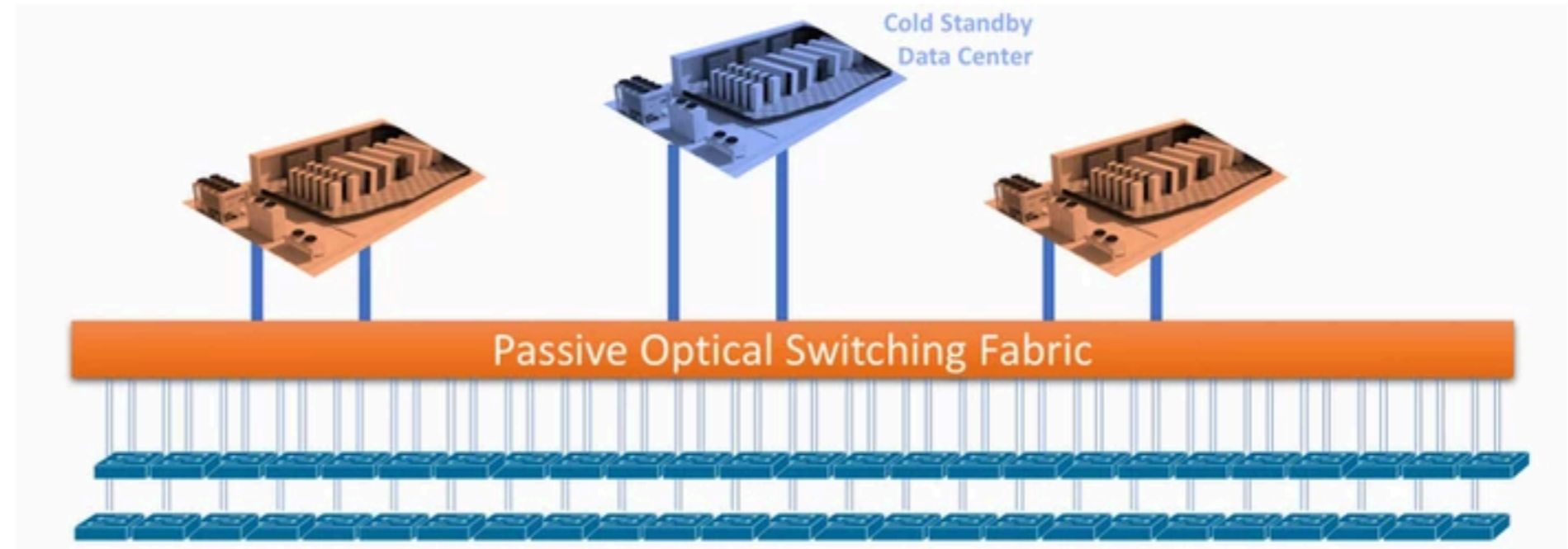
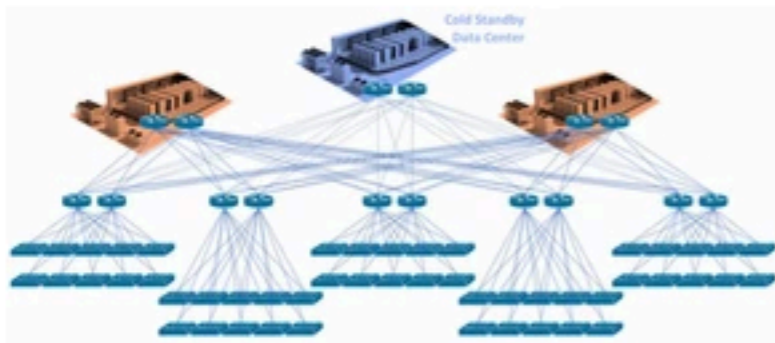


## Dark Fiber Use Case 2

# Mission Critical Achieved via Zero-Touch

Mission-Critical is often more than just being critical to a business, it can often be critical to preserving life. Systems such as airports, hospitals, nuclear power stations typically build redundancy and protection at every level, but this level of active equipment redundancy brings its own challenges:

- Complexity
- Inflexibility
- Configuration Management
- Update management
- Equipment & Maintenance costs
- Power & Cooling Costs



A passive optical fabric allows for architectural simplification whilst maintaining full redundancy, easy management including fast restoration from a connection failure, full system visibility, including the physical layer. Delivering a HA network to underpin mission critical services, the system can be easily monitored, configured, tested and updated remotely. It enables services to be added, changed and migrated as end users change their requirements, location or services and services to be easily migrated for routine maintenance and upgrades. All services can be easily switched from a failed 'hot data center' as a standby 'cold data center' is brought on-line to restore the full redundancy of the solution.