



A very warm welcome to Natterjack Cottage

We hope you enjoy your stay here and have a lovely holiday in Norfolk.

This folder contains information to help you make the most of your stay and to ensure you have important contact details for any emergencies.

Any other questions you may have or information you may require, please don't hesitate to contact us.

Jonathan and Mandy: **01953 860080** or **07879814009**

Please remember that Natterjack Cottage is a non-smoking area.

Thank you for your booking, we hope you have a thoroughly enjoyable and comfortable stay and a lovely time visiting beautiful Winterton-on-sea.

Best wishes,

Jonathan and Mandy



CONTENTS

Page/s number

About the owners	3
Directions/Parking	4
Settling in guide (books/games, fire safety, towels, coffee machine etc) .	5 – 6
Heating/hot water	7
Wood burner	8 – 9
Bins	9
WIFI	9
Access to beach/pets	9 – 10
Lounge	11
Kitchen/hall	12
Bathroom/bedrooms/outside	13 – 14
Local amenities	15 – 16
Leaving the cottage	17
Fire Safety (please read)	18 – 22

You will also find copies of our Fire Risk Assessment, Fire checks & logs in this folder.

About the owners

A big welcome to Natterjack Cottage from the Hartley Family. My name is Mandy, I'm a Science Educator and I run workshops in schools teaching children about DNA. I am also a children's author and have written a series of "DNA Detectives" books where the characters in the book (based on our children and our dog Milly) use DNA to solve a crime. You can find copies of my books on the shelf in the lounge if you would like to have a read during your holiday. My husband Jon works in PR and we have two children, Annabelle and Harry. The most important member of the family is our black Cockerpoo, Milly.



We are so delighted you have chosen to stay at Natterjack Cottage. For us this is our treasured place to escape from it all as a family and we hope it will be the same for you. We have tried to make the cottage so you don't have to think about anything, everything is here that you need. We want it to be a real treat when you stay here.

When I was choosing all the fabrics to make the blinds, curtains and lamp covers, I really tried to think about colours and themes that would be relaxing and give a nod to the coast. I loved picking beautiful things from the pots and pans, to the tide clocks, even the books describing the history of the Norfolk Coast. For us, with really busy lives it is such a treat to stay and everything (I hope) is so easy!

As a family we love the beach. Both our children, Annabelle and Harry really enjoy surfing, so even in the Winter that is what they most want to do when we stay at the cottage. Our son also likes to jump down the dunes and has recently discovered the water chutes at the Leisure Centre at Great Yarmouth. It has become a must for every visit!

For my husband and I, we love watching the seals. Our black Cockerpoo Milly, just loves running and chasing ball along the beach. In winter it is wonderful to have a morning of fresh air, then come back and collapse on the sofa in front of the fire. I sleep so well at Natterjack Cottage!

We really hope you enjoy your visit and just like us it becomes your treasured place to stay!

Directions

As you enter Winterton-on-Sea turn into Black Street (the road with the church on it). The church should be on your left. Take the first turning on the left, after the church, into Empson's Loke. About one hundred yards on the right is a flint barn with a sign that reads: 'Church Farm Barns'. Turn right before the barn on to a short gravel driveway.

You will drive past Natterjack Cottage on your right as you enter the car park area. Natterjack Cottage is in the middle of two cottages and has a green sign on the trellis.

What3words: tissue.wires.mealtime

Parking

Parking for Natterjack Cottage is towards the left-hand side of the car park. There is a "Natterjack Cottage" sign in front of the parking bay.

Access (Key code)

You will find the cottage door key in a locked key box on the exterior wall of the cottage, to the right of the door. The code will have been sent to you in your welcome email. Once you have obtained the key, please leave the key box closed with the dial set to '0000'.

Inside the cottage is a key rack next to the bathroom for you to place the keys. You will also find a spare set of keys for the cottage and summerhouse here.

Settling in guide

General information about the house

Covid-19

Although Government guidelines have been relaxed in regard to Covid-19 we are still doing everything we can to keep you safe during your stay. Below are details of the precautions we have taken.

Fire Safety

In order to reduce the risk of fire, we ask that you please do not smoke*, use e-cigarettes (vape) or use candles/tea lights/ethanol burners inside the property. We would also ask that you take care charging tablets, mobile phones (avoid doing this overnight where possible) and do not charge electric cars or bikes. Unfortunately, we do not currently have the facilities for you to safely charge these items at the cottage. Current fire safety regulations advise that doors to bedrooms are closed at night, to reduce the risk of a fire spreading and for your safety.

In addition, for your safety please try not to use electric appliances such as the washing machine or the dishwasher overnight or when you are not in the property.

* We would encourage guests not to smoke outside, but if you need too, please use the ash tray which you will find in the red bag in the Summer House.

In order to avoid fire risk, please do not place anything on top of or in front of the heaters and fan heaters used in the cottage. Keep BBQ a safe distance from the house and please extinguish after use. Leave coals overnight to cool, before disposing. There is an ash bin in the cottage which can be used.

Please refer to the end of this manual where all our fire safety details are listed, including what to do in case of a fire, fire prevention, location of emergency torches, fire equipment, fire alarms and escape routes. You will find a copy of our fire risk assessment and our fire safety logs/checks in the back of this folder.

In the event of a fire or power cut there are emergency torches located in the bedrooms, lounge and kitchen (details of the location of these torches can be found in the details for each room in the guest manual and on the escape route map). The location of the emergency torches are indicated in the rooms are indicated by the following signs. Please do not unplug the emergency torches.



Please be aware all our fire alarms are linked (as required by fire legislation laws), so if one goes off, they will all go off!

In case of emergencies the address of the property can be found in the guest manual and inside the door of the cupboards in the bedrooms. "What three words" can be used when speaking to emergency services. For Natterjack Cottage these are – tissue – wires - mealtime

Cleaning

The cottage has been thoroughly cleaned prior to your stay. All floors, soap dispensers and surfaces have been treated with recommended anti-viral disinfectant. All items in the kitchen have been cleaned prior to your arrival but if you would prefer you can wash them before use.

Books & games

We have a selection of games and jigsaws for guests use (in the cream cupboard as you enter the property). There are also a number of books with local walks, history and activities to keep children busy (on the shelf as you enter the cottage). I am a children's author and have written "The DNA Detective" books on the shelf. They are perfect for 6 – 14 year olds and are the first books where the characters use DNA to solve a crime! You are welcome to have a read!

We have a foldup table which can be used for jigsaws which is under the bed in the twin room. There are also garden games and toys for the beach in the summer house.

Binoculars, umbrellas, picnic back pack and rug

We have a selection of binoculars for adults and children (on the shelf as you enter the property). You are welcome to use them if you are off spotting seals or the local wildlife. There is also a flask and enamel mugs in the kitchen cupboard for hot drinks to take with you on days out. Nothing better than a hot chocolate when you are watching the seals! Alternatively, you are welcome use our backpack and picnic rug, which are on the coat stand if you fancy a picnic. Do help yourself to the umbrellas if it rains.

Towels

We have provided a white hand and bath towel for each guest. We also provide a coloured beach towel which can be used for trips out.

Coffee machine

We have a coffee machine for our guests or a cafetiere if you would prefer. There is a selection of coffee pods available in the welcome hamper including hot chocolate. You should also be able to buy Tassimo pods from the local Co-op in Martham or Hemsby. The instructions to use the machine are next to it. There are various videos on Youtube if you prefer. You will find espresso cups in the kitchen cupboard with the chopping boards in it. Used coffee pods can be placed in the bag provided so they can be recycled. Enjoy!

Hot water & Heating

Hot water

The hot water does take a little while to flow through to the taps as the tank is situated on the opposite side of the cottage to the kitchen and bathroom.

The technique for **filling a deep bath with hot water** is a bit quirky! If you fill the bath with hot water first and then add any cold at the end. If you want more hot water, leave it 10 minutes and there should be plenty more!

The water heating is set from 6am to 10am, noon until 1pm and from 4pm until 10pm.

If for some reason you need to give it a boost you can press the “N” button on the water heating control which is situated on the outside of the wall cupboard (on the right) in the lounge area beside the table with the fish lamp on it.

Pressing the “N” button once will boost the water heating for one hour.

Heating

Please do not put anything on top of any of the heaters in the cottage.

The heating for the cottage comes on and off automatically. You can manually control it through two main wall switches; one in the living room area and one in the main bedroom.

Each switch has three buttons marked ‘Comfort’, ‘Standby’ and ‘Away’. If you want to heat the room up hold and press ‘Comfort’ and it will boost the heating.

If you wish to reduce the heat in the room hold and press ‘Standby’ and the radiators will cool down. You can also adjust the thermostats on the individual radiators.

The wall switch in the living room controls the radiators in the main living area.

The wall switch in the main bedroom controls the radiators in both bedrooms.

Fan heaters

During cold spells flint buildings can be difficult to heat so we have supplied additional fan heaters. There is a fan heater in the cupboard in the main bedroom and one in the sitting room next to the side board.

The fan heater in the sitting room is WIFI controlled and will automatically come on in the morning and evening to boost the temperature during cold spells. **Please be careful not place anything in front of it or on top of this fan heater as it comes on automatically.** The fan will automatically shut off if tipped over or if it overheats.

The fan heater in the main bedroom can be controlled via a remote control which you will find with the heater.

All fan heaters in the cottage will automatically shut off if tipped over.

Wood burner

The wood burner is there to give additional heat and allow visitors to cosy up in front of after a long walk or while watching TV. Heatproof gloves, kindling, matches, firelighters and automatic lighters can be found in the baskets in front of the wood burner (if children are staying matches and lighter will be kept in the middle drawer in the kitchen).

Fire safety

Please make sure when the wood burner is in use the door is shut and that you use the fire guard. Please keep children away from the hot surfaces. Any ash can be left in the wood burner or placed (when cool) in the metal bucket next to the wood burner. To avoid the risk of fire, firelighters, matches and wood should not be placed in **direct** contact with the outside of the wood burner and placed a safe distance away.

The lounge/kitchen has a carbon monoxide (and heat) alarm fitted on the ceiling near to the front door. If the Carbon monoxide alarm has been triggered (the alarm will indicate if it has been triggered by heat or carbon monoxide), evacuate the building as quickly as possible, and get into the fresh air. Call 999 and do not return into the property until safe to do so. If you are feeling unwell seek medical attention. Please let us know, so we can find out the source of the problem as soon as possible.

Please only burn seasoned wood in the burner (do not burn any other fuel).

We have provided logs and kindling for the first night. You can purchase logs and kindling locally at the Jet Garage in Hemsby (Yarmouth Road, Hemsby, Great Yarmouth, NR29 4NL).

They do stock it at the village shop but we found the sample that we bought did not burn very well. There are firelighters and a lighter in the drawer in the kitchen.

Advice for lighting the wood burner

To start the fire make sure the silver handles on the front of the wood burner are towards the right.

It is worth initially just lighting the firelighters and kindling inside the wood burner for a few minutes to clear the colder air from the flue pipe before adding wood on to burn. The wood burner is very efficient and does create a great amount of heat.

To turn the heat down move the handles at the top and bottom towards the left using a heat proof glove. There is a heat proof glove, kept beside the wood burner, as well as a metal bin if you need to empty the ash. Let it cool down first.

Bins

Inside

The bins in the kitchen have a motion sensor. Just wave your hand at the front of the bins and they should open. The bin on the right is for general waste while one on the left is for recycling. We are only able to recycle paper, card, soft plastics and tin cans. **NOT GLASS.**

The nearest place to recycle glass is Hemsby, in the car park near the graveyard (Waters Lane Playing Field, Great Yarmouth, NR29 4NH. Or there is a bottle bank at The Lion pub in Somerton, Martham Road, West Somerton, NR29 4DP.

Outside bins

The red wheelie bin with the **orange/brown lid** is for recycling. Please note we are only able to recycle paper, card, soft plastics and tin cans. **NOT GLASS.** The red wheelie bin with the **black lid** is for general waste.

The bins are emptied weekly on **Wednesday** for recycling and **Tuesday** for general waste. They will be collected from the store in the garden so you don't need to put them out!

Wi-Fi

Wireless broadband is available at Natterjack Cottage. You can use your phone to login to the WIFI directly. Go to the camera on your phone and point it at the QR code (on the sign on the cream sideboard, next to the guest handbook). It should automatically come up with a message you can click on to log onto the WIFI. Alternatively, the network and password are below;

WIFI network: BT-S9CWNP

WIFI password: bErTYfqym3MFL7

Access to the beach

The beach can be accessed by two routes. Each will take approximately 5 – 10 minutes.

Via the lane

Leave the cottage via the gate in the car park and turn right. Follow the road till it turns into a lane. Keep going straight ahead till you reach a field with horses in it. Turn right and follow the lane all the way down till you hit a T-Junction. Turn left and you will come to the sand dunes. If you head right, you will reach the beach – and hopefully see some seals!

Via the village

Turn left outside the cottage and follow the gravel track where you drove in. When you come to the end of the gravel track turn left. At the end of the road turn left again. If you follow this road straight along, past the shop (on your left), post office and chip shop (on your right) you will eventually come to the beach car park. There is van here selling drinks and snacks.

Village Pub

Head for the village shop along the main road. From the main road with the shop on your left, you need to take the road opposite the shop, on your right (The Lane). Head down this road and "The Fisherman's Return" is on your left. It is a fantastic pub and serves great food.

Pets

We hope your pets will enjoy their stay and welcome pack! Please use the doggy towel provided for wet paws, food/water station and the dog blanket for the sofas. We also provide a "holiday tag" which you are welcome to use and a foldable bowl for trips out. Please avoid letting dogs into the bedrooms or on to the beds and keep the garden clean. Thank you.

During your stay – useful notes relating to each room

Lounge

TV – The smart TV is equipped with Freesat which will give you access to more than 170 TV and radio channels.

You also have access to Netflix, Amazon Prime Video and Disney+.

All of these channels and apps, such as BBC iPlayer, are controlled from one remote control.

Fan heater – There is a fan heater next to the sideboard. This will come on automatically during cold spells but can also be controlled manually if you wish to boost the temperature of the cottage. **Please do not place anything on top or in front of the fan heater.**

Main fuse box

This is located in the cupboard behind the chair. If a lightbulb goes, please check the fuse box as it may trip out. There are spare light bulbs in the drawer in the kitchen.

Fire Safety: Carbon Monoxide/heat alarm, door has thumb lock which can be opened in an emergency without the key. If you have small children, you may wish to put the bolt at the top of the door across, to keep it secure.

Emergency Torch

In the event of a power cut or fire there is an emergency torch on the wall near the heater.

Kitchen/hall

There are various spare batteries, a knife sharpener, light bulbs, tool for removing spotlights, screwdriver and torch along with many other useful items in the middle drawer in the kitchen. You will also find bin bags, dish cloths, tea towels, washing up liquid and dishwasher tablets under the sink.

Table mats are in the middle drawer in the cream side board.

Instructions for the electrical appliances are kept in a purple folder in the drawers in the kitchen

DAB Radio is located on the windowsill in the kitchen to the right of the oven.

A first aid kit is kept under the sink. The **fire extinguisher (multipurpose)** and **fire blanket** are located under the window near the cooker. In the event of a fire please leave the property as soon as possible. Your safety is the priority. We do not expect you to put out any fires, unless safe to do so (please refer to fire safety section of manual for instructions).

Washing machine/dryer - You are able to wash and dry clothes in the machine with the various settings explained on the front of the machine.

Fire Safety - Heat detector/carbon monoxide fire alarm in kitchen & smoke detector in hall

Emergency Torch

In case the event of a power cut or a fire there is a spare torch in the kitchen drawer (second drawer down) and an emergency torch on the wall near the microwave.

Bathroom

There are soap dispensers of “Sea Kelp” bath/shower gel and shampoo for guests to use. These are from the Scottish Fine soaps range for sensitive skins. The towel rail is kept on permanently (apart from warm summer days), but can be adjusted to raise or lower the heat in the bathroom.

The fan isolator switch is located above the outside of the door. Please leave this on when using the shower to prevent condensation damage.

Main bedroom

TV – The smart TV is equipped with Freesat which will give you access to more than 170 TV and radio channels.

You also have access to Netflix, Amazon Prime Video and Disney+.

All of these channels and apps, such as BBC iPlayer, are controlled from one remote control

Hairdryer can be found in the bottom drawer of the wardrobe; you will also find an extension lead (so you can dry your hair in front of the mirror!) and a shaver plug here.

Fan heater – there is a fan heater in the wardrobe which can be used to provide additional heat if required. We also provide additional fans in the summer to keep the room cool. The remote control is kept with the fans. **Please do not place anything on top or in front of the fans.**

Fire Safety - smoke detector, instructions of what to do in the event of a fire are on the back of the door, the address of the property can be found inside the cupboard.

Emergency Torch

In case the event of a power cut or a fire there is a spare torch in the bedside drawers and an emergency torch on the wall next to the bedside drawers on the left of the bed. This can also be used as a night light (please leave plugged in).

Small bedroom

Cot – There is a pop-up cot under the bed if required.

Clothes dryer – under the bed if needed

Ironing board – under the bed if needed

Fold up table (for jigsaws!) – under the bed if needed

Hairdryer & Mirror can be found in the bottom of the wardrobe

Fan – We provide a fan in the summer to keep the room cool. The remote control is kept with the fan. **Please do not place anything on top or in front of the fan.**

Fire Safety - smoke detector, instructions of what to do in the event of a fire are on the back of the door, the address of the property can be found inside the cupboard.

Emergency Torch

In case the event of a power cut or a fire there is a spare torch in the bedside drawers and an emergency torch on the wall under the light switch. This can also be used as a night light (please leave plugged in).

Outside

Summer house – The keys for the summer house are hanging up on the key rack by the bathroom. You will find a wind break, foldable chairs, beach parasol (including metal post for the sand), pop up washing line (plus sand bags to keep it in place), laundry bag, pegs, ash tray (red bag) and beach toys/games/kites for your use in the summer house. There are also cushions and a parasol for the outside table and chairs.

There is an outside light next to the front door. The light switch is on the wall, next to the door on your left as you enter the property. Guests are welcome to use the BBQ on the patio (Spring and summer only). Please keep BBQ a safe distance from the house and extinguish after use. Leave coals overnight to cool, before disposing. There is an ash bin in the cottage which can be used.

We would encourage guests not to smoke outside, but if you need too, please use the ash tray which you will find in the red bag in the Summer House.

Local amenities and medical facilities

For recommendations of places to visit and good places to eat please see our website – www.natterjackcottage.co.uk

Nearest A&E

James Paget University Hospital, Lowestoft Road, Gorleston-on-Sea, Great Yarmouth, NR31 6LA. Tel 01493 452350. The James Page University Hospital is situated approximately 10 miles from Winterton-on-Sea.

www.jpaget.nhs.uk

Local GP surgery

Hemsby Medical Centre, 1, Kings Court, Hemsby, Great Yarmouth, Norfolk, NR29 4EW. Tel. 01493 730449. 1.2 miles from Winterton-on-Sea.

Martham Health Centre, Hemsby Road, Martham, Great Yarmouth, Norfolk, NR29 4QG. Tel. 01493 748833. 2.2 miles from Winterton-on-Sea.

www.coastalvillages.nhs.uk

Local dental practice

John G. Plumber & Associates Dental Surgeons, 1 Kings Court, Hemsby, Great Yarmouth, NR29 4EW. Tel 01493 732443.

www.plummers.co.uk/contact/

Local veterinary practice

Caister Vets, 5, Ormesby Road, Caister-on-Sea, Great Yarmouth, NR30 5JY. Tel. 01493 809766.

www.caistervets.co.uk

Nearest dispensary

Natural Health Pharmacy, 3, Kings Way, Hemsby, Great Yarmouth, Nr29 4JT. Tel. 01493 731697.

Local Tourist Office

Great Yarmouth Tourist Information Centre, Maritime House, 25, Marine Parade, Great Yarmouth, NR30 2EN. Tel 01493 846346.

Nearest supermarket

Loomes Stores, Market Place, Winterton-on-Sea, Great Yarmouth, NR29 4BE. Tel 01493 393276.

East of England, Co-op store, The Green, Martham, Great Yarmouth, NR29 4PA. Tel. 01493 740230.

Post Office

Winterton-on-Sea Post Office, Beach Road, Winterton-on-Sea, Great Yarmouth, NR29 AJ. Tel. 01493 393238.

Leaving the cottage

We ask if guests could kindly leave the cottage by **10am** on the morning of your departure. If you are leaving on Sunday, check out time is **4pm**.

There is no need to strip the beds, we will do that for you. Please just leave any used towels in the bathroom. Thank you.

We oversee the cottage changeover personally to ensure that Natterjack Cottage is preserved to our high standards, and we ask our guests to leave the cottage in the same clean and tidy state as they find it on arrival. Please return the spare key and shed key to the key holder by the bathroom. After locking the front door replace the other key in the key safe as before. Once closed, please turn the numbers to '0000'.

Feedback

We would greatly appreciate if you have time if you could fill out our guest book which is on top of the cream side board. Any feedback and suggestions regarding your stay at Natterjack Cottage are much appreciated. You may have some recommendations for days out for other guests too!

You can also leave feedback in the following ways;

By Post:

Jonathan & Mandy Hartley, Pump Court, Church Street, New Buckenham, Norfolk, NR16 2BA

By email:

info@natterjackcottage.co.uk

By telephone:

01953 860080 or 07879814009

Online:

www.wintertoncottages.co.uk/accommodation/natterjack#reviews

Thank you for staying at Natterjack Cottage, we hope you have a comfortable, cosy stay and enjoy Winterton-on-sea and Norfolk. Please do come back to stay with us again soon!

Best wishes,
Jonathan and Mandy

Fire Safety

Fire Prevention – to reduce risk of fire for our guests

1. Do not use candles/tea lights/ethanol burners or charge electric cars or bikes in or outside the cottage. Avoid where possible charging mobile phones/tablets etc overnight.
2. Do not put items in front of or on top of heaters or fan heaters.
3. Please try not to use electric appliances such as the washing machine or the dishwasher overnight or when you are not in the property.
4. The fan heater in the lounge has an anti-slip mat underneath it, and is fitted with a safety feature, so it will automatically turn off if overheating or tipped over. All fan heaters used in the cottage will turn off automatically if tipped over.
5. Do not smoke or use e-cigarettes (vape) inside the property. We would also encourage guests not to smoke outside, but if you need too, please use the ash tray which you will find in the red bag in the Summer House.
6. When using the wood burner, do not place wood, fire lighters or flammable objects on or touching the surfaces of the burner. Leave ash either in the wood burner, or in the metal bucket when cool.
7. Close doors at night to avoid spread of fires.
8. Keep emergency torches on the walls plugged in at all times.
9. Familiarise yourself with escape routes and action to take in case of fire.
10. The property is fitted with a combination of heat, smoke and carbon monoxide fire alarms.
11. All electrical items are PAT tested once a year.
12. Before each stay function of fire alarms and emergency torches are checked. In addition, emergency exits are checked for clear access and that they can be opened easily. We also check fire extinguisher and fire blanket are fit for purpose (see sheet in guest book for safety logs).
13. The hob, grill, extractor fan and oven are cleaned regularly. Make sure they are turned off after use and pans/plastic plates are not left on the hob.
14. The iron is switched off after use.
15. The door to the wood burner is shut when in use and the fire guard is used to avoid the risk of sparks.
16. Doorways, windows and escape routes are kept clear.
17. The front door is installed with a thumb lock. It can be opened from the inside without a key, for easy opening in the event of a fire. **If you have small children, you may wish to put the bolt at the top of the door across, to keep it secure.**
18. Outside bins are situated away from the cottage in purpose-built storage.
19. EICR Testing carried out every 5 years to ensure all electrical items, extractor fans, lighting and fuse box are in line with safety standards and are in good working order.

In the event of a fire (see signs on bedroom doors and in guest folder)



Alarms will sound automatically



Quick guide:

If you hear the fire alarms sounding –

1. Check for fire (our fire alarms are linked, so if one goes off, they will all go off, as required by fire legislation laws).
2. In the event of a fire, leave the property as quickly and safely as possible following the safest escape route and head towards the fire assembly point in the car park (see map of escape routes on the next page). As you leave close doors behind you to prevent spread of the fire, do not collect any belongings.
3. Keep low to avoid smoke inhalation and if necessary, cover your mouth with an item of clothing. Emergency torches are provided in the bedside drawers in each of the bedrooms and in the kitchen drawer. There are also emergency torches on the walls in the bedrooms, kitchen and lounge which will light up in the event of a fire or power cut. There is a sign in these rooms to identify their location (please do not turn these off!).



4. Once assembled in the car park, at a safe distance from the cottage make sure everyone is present and guests in neighbouring properties are aware of the fire. Call 999. Our address is: Natterjack Cottage, Empson's Loke, Winterton-on-Sea, NR29 4AR. You can use **What3words: tissue.wires.mealtime**

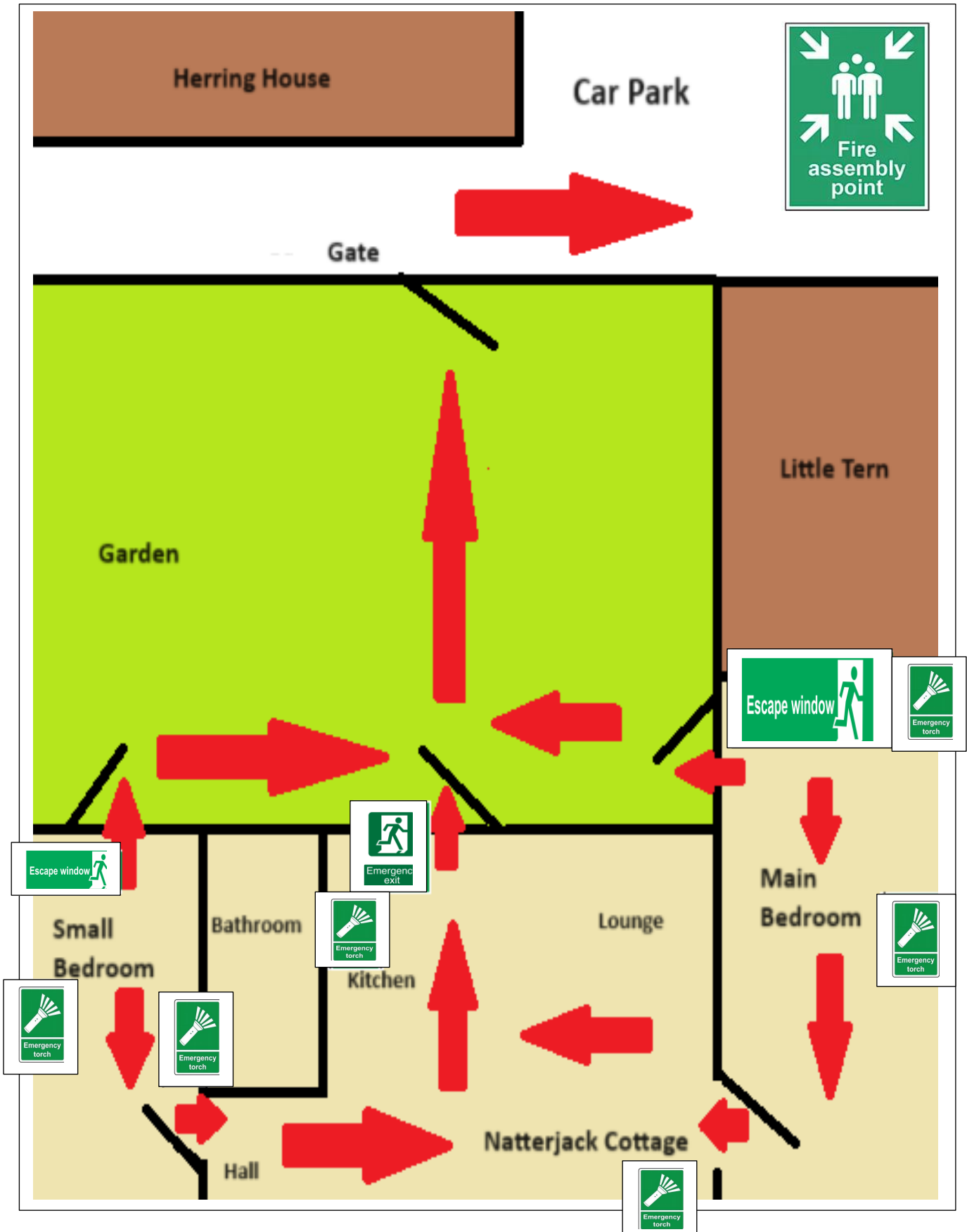
Escape route

The escape routes for guests are as follows;

The fire exits for Natterjack Cottage are located through the front door in the lounge and the windows in the bedrooms. Use the route that will enable you to get out of the building as quickly and safely as possible.

Map of escape routes for Natterjack Cottage

Location of fire assembly point (car park), emergency exits (bedroom windows, front door) and emergency torches marked on map. Emergency routes to follow are marked by red arrows.



Use of multi-purpose fire extinguisher (replaced every five years)

There is a multi-purpose fire extinguisher and fire blanket located by the book shelf. Only tackle small fires if safe to do so or to help someone if they are on fire. If the fire has taken hold evacuate immediately to the fire assembly point (car park) and warn others. Then call 999.

Multi-purpose extinguishers can be used on flammable solids like paper, textiles and wood. They can be used on flammable liquids like paint, petrol and diesel. They can also be used on flammable gases like **methane**, propane and butane, electrical, chip pans, oil, metals and battery fires.

If you tackle the fire stay at a safe distance at least 1m from the fire (put yourself between the fire and the exit. Always make sure you can escape easily) and follow the instructions below;

1. Hold upright. Pull out the safety pin.
2. Aim the nozzle at the base of the flames, move side to side across the area of the fire.
3. Once the fire is extinguished, scan for re-ignition.

Fire blanket (replaced every 5 years)

If someone is on fire and it is safe to do so, a fire extinguisher can be used to put out the flames. If this is not successful, use the blanket. It is better to cool someone down to help with burns, rather than maintain the heat by using a blanket. Remember to always put yourself between the fire and a safe exit.

Using the fire blanket for clothing fires

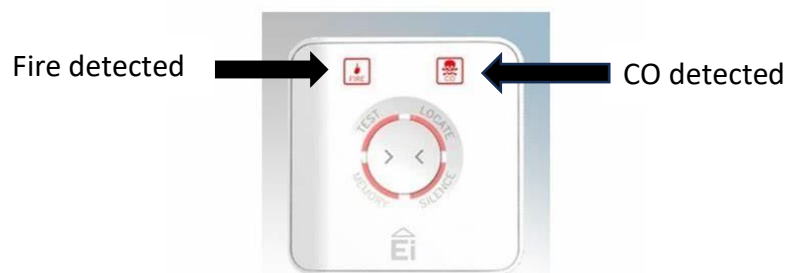
1. Pull the tapes to release the blanket from its container.
2. Hold the blanket in a shield position and if possible, wrap the blanket around your hands for protection.
3. Wrap the blanket tightly around person to smother the fire.

Fire Alarms

There are smoke detectors in each of the bedrooms and a smoke detector in the hall outside the bathroom. In the main living area we have a multi-function heat, smoke and carbon-monoxide detector. There are also smoke detectors in each of the loft spaces. We also have an additional, carbon monoxide detector on the beams above the wood burner. The alarms are tested at each change over, a log of these checks is kept at the back of the guest book folder.

On the wall above the arm chair in the sitting room, you will find a control switch for the fire alarms. We use this to test the alarms. If an alarm is triggered by a fire the control switch will tell you which alarm has been triggered. It will also tell you if it is the carbon monoxide alarm which has been triggered. If so, please evacuate as soon as possible (follow instructions on P23).

Remember there are fire alarms in the loft spaces, so you may need to check these if you have checked the fire alarms in the house and there doesn't seem to be a fire. If safe to do so, and all fire alarms have been checked, you can press the "silence" button, which will silence the alarms, unless they are still detecting a heat or smoke source.



Carbon monoxide

If the Carbon monoxide alarm in the kitchen/lounge has been triggered (it will indicate on the alarm and the control switch whether it has been triggered by a fire or carbon monoxide), evacuate the building as quickly as possible, and get into the fresh air. Call 999 and do not return into the property until safe to do so. If you are feeling unwell seek medical attention. Please let us know, so we can find out the source of the problem as soon as possible.