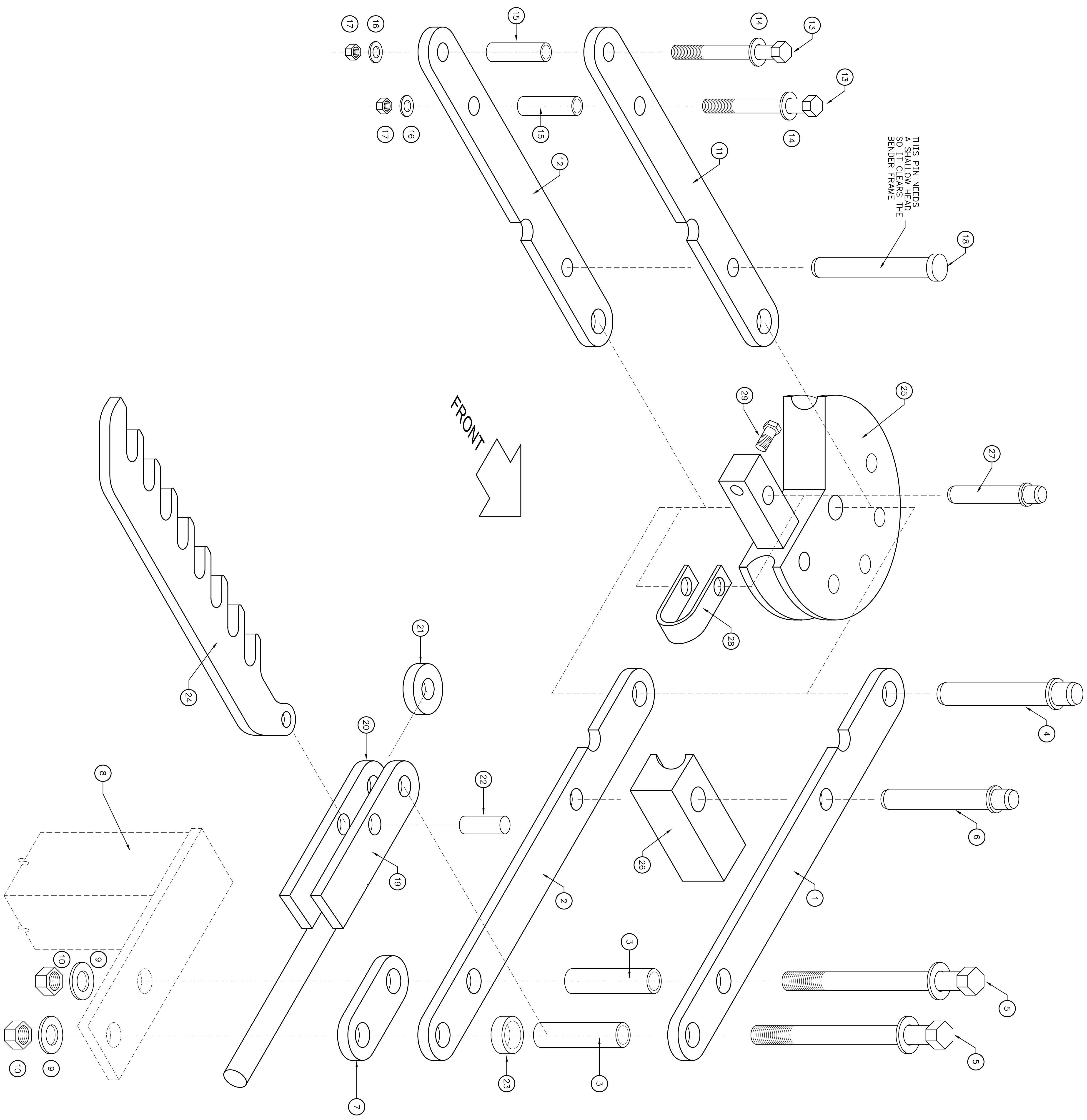


GENERAL NOTES

THESE PLANS ARE MEANT TO BE USED IN CONJUNCTION WITH ASSIGNED PARTS. DESCRIBING THE BUILDING DRAWINGS FROM AN UNAUTHORIZED SOURCE PLEASE GO TO THE CHOPPER BUILDERS SITE AND DOWNLOAD THE .pdf BUILDING INSTRUCTIONS.
 HTTP://WWW.CHOPPERHANDBOOK.COM

PARTS SCHEDULE

No.	DESCRIPTION
1	UPPER FRAME PLATE
2	LOWER FRAME PLATE
3	FRAME SPACER SLEEVES, 1"O.D.x.120" WALL DOM
4	DIE PIVOT PIN (1" DIAMETER)
5	3/4" DIA. FRAME MOUNTING BOLTS
6	FOLLOW BAR PIVOT PIN (7/8" DIAMETER)
7	OPTIONAL FRAME MOUNTING SPACER
8	BENDER MOUNT PEDESTAL (BY OWNER)
9	3/4" STANDARD WASHERS
10	3/4" STANDARD NUTS
11	UPPER CONTROL (DRIVE) ARM PLATE
12	LOWER CONTROL (DRIVE) ARM PLATE
13	1/2" DIA. DRIVE ARM BOLTS
14	1/2" STD. WASHERS
15	3/4"O.D.x.120" WALL DOM SPACER SLEEVES
16	1/2" WASHERS
17	1/2" STD. NUTS
18	7/8" DIA. DIE DRIVE PIN
19	UPPER RATCHET LEVER HANDLE PLATE
20	LOWER RATCHET LEVER HANDLE PLATE
21	RATCHET HANDLE SPACER
22	RATCHET ARM PIVOT PIN, 3/4"Ø
23	1" SHAFT COLLAR
24	RATCHET ARM
25	BENDING DIE (DIE FORMER) (JD2)
26	DIE FOLLOWER OR FOLLOW BAR (JD2)
27	TUBE CLAMP (U-STRAP) PIN
28	TUBE CLAMP (U-STRAP) (JD2)
29	TUBE CINCH (TENSION) BOLT (JD2)



Drawn By	GMW
Date	7-20-06
Checked By	HC
Date	7-24-06
Scale	1" = 1"
Part No.	-
Project No.	-

**TUBE BENDER
EXPLODED VIEW
AND PARTS LIST**

**BUDGET
TUBING
BENDER**

**CHOPPER
BUILDERS
HANDBOOK**

CBTB-1.1