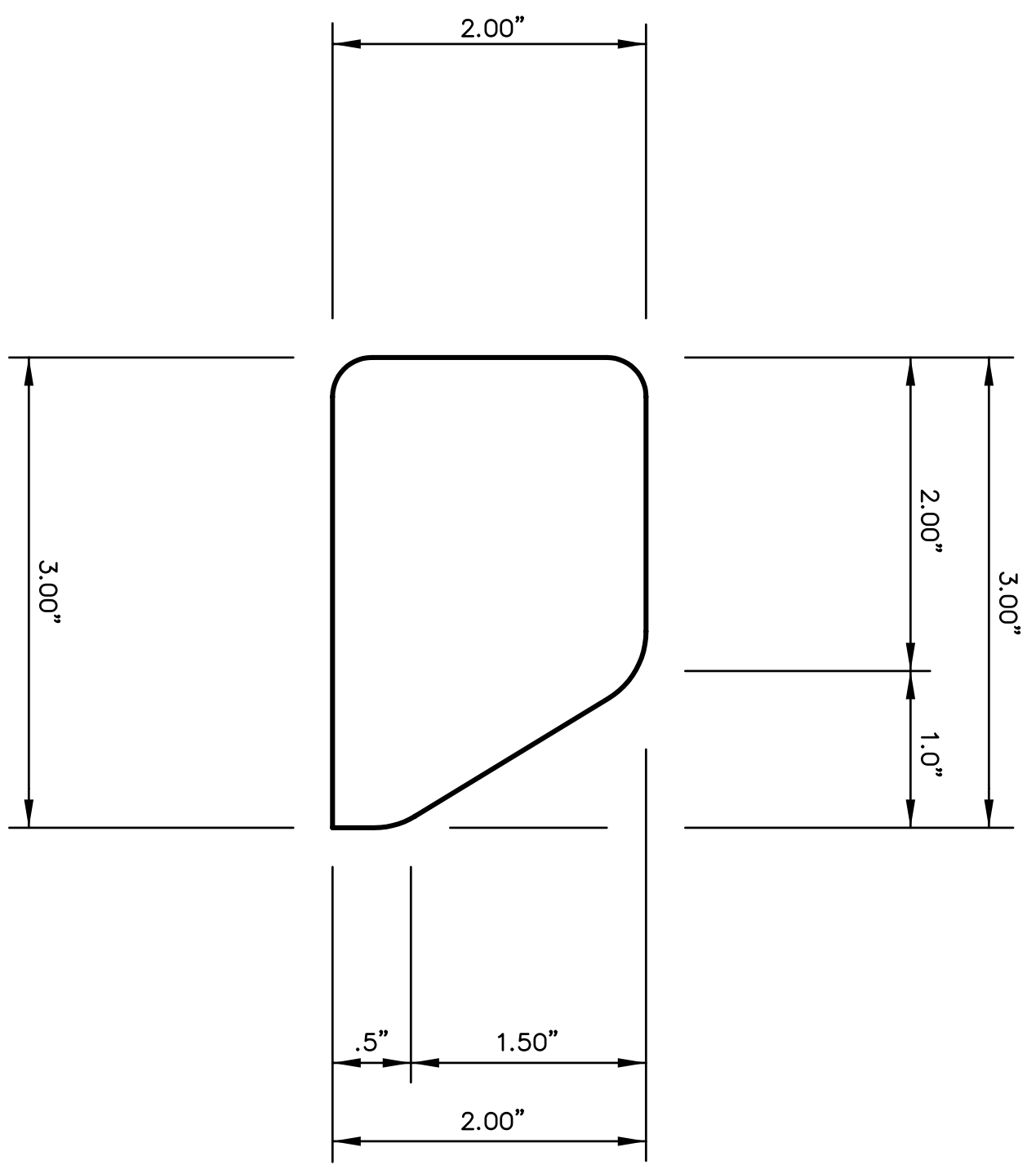


CHOPPER BUILDERS HANDBOOK

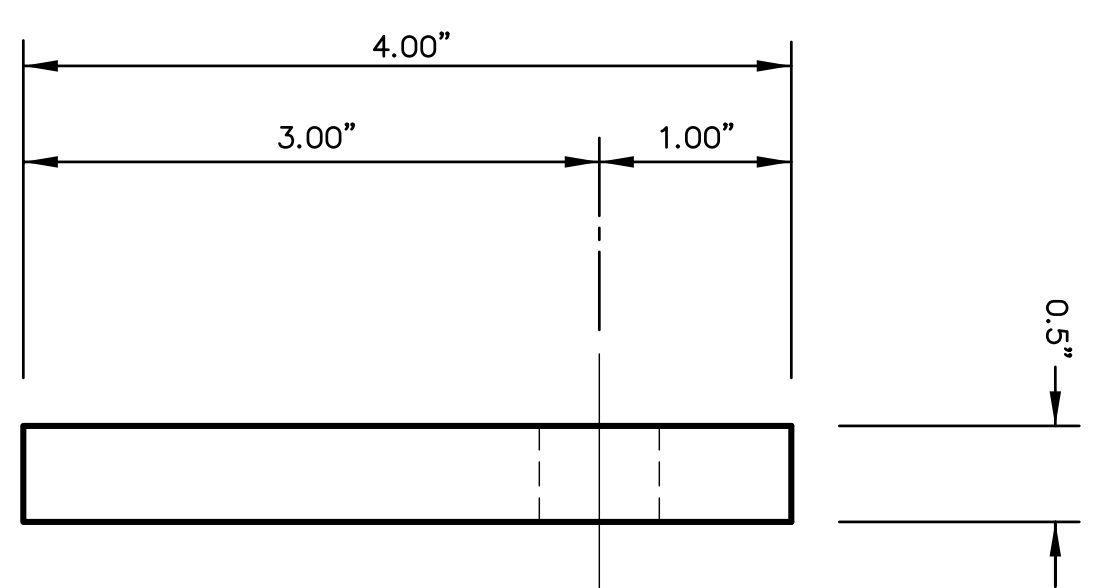
© 2001-12 G.W. WEISHAAPT, ALL RIGHTS RESERVED.



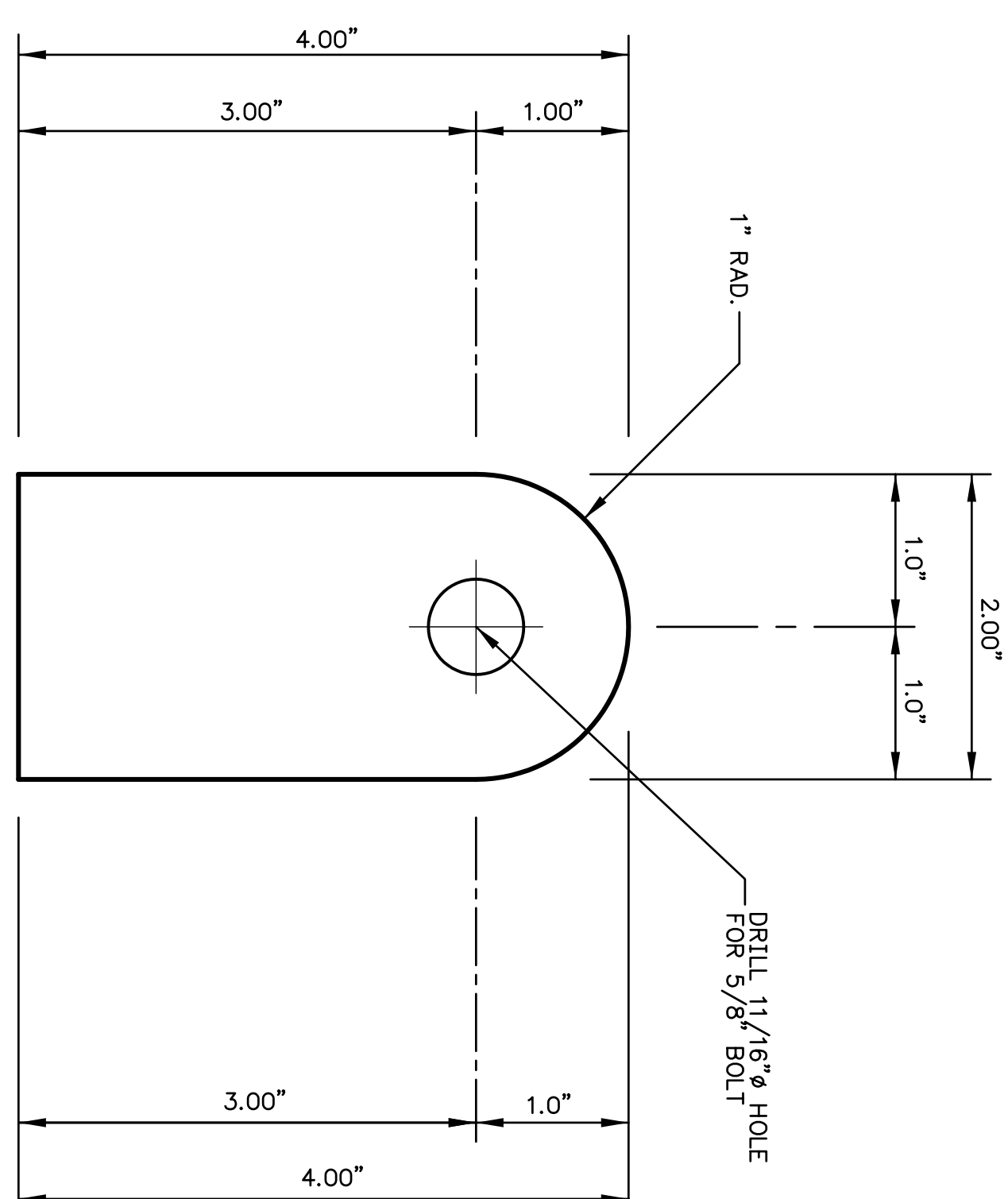
TOP VIEW

8 TUBE CAP GUSSETS

SCALE 1" = 1" (FULL SIZE)
MAKE TWO FROM 2"x3/8" OR STEEL PLATE



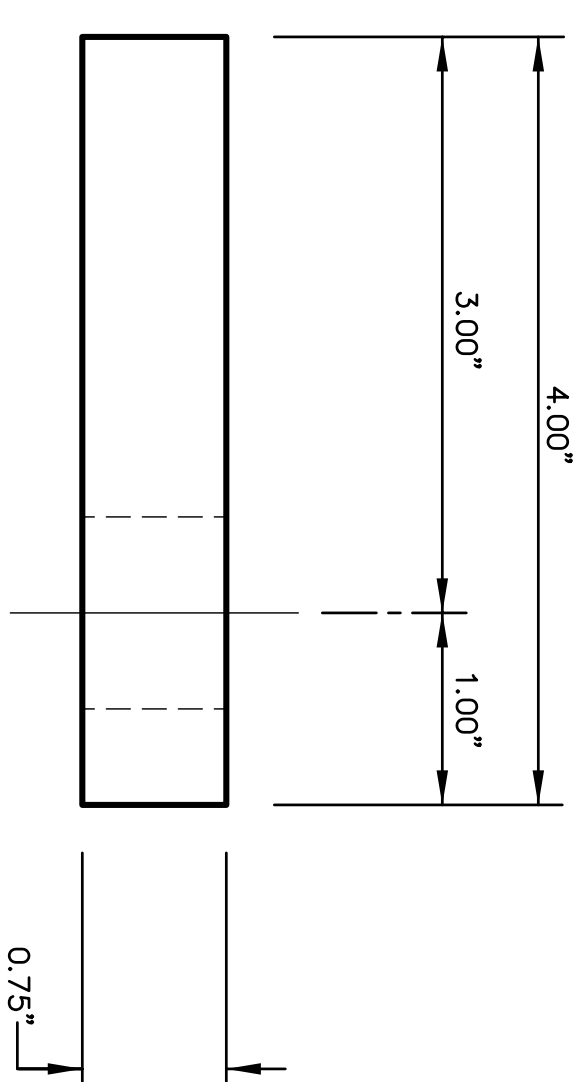
END VIEW



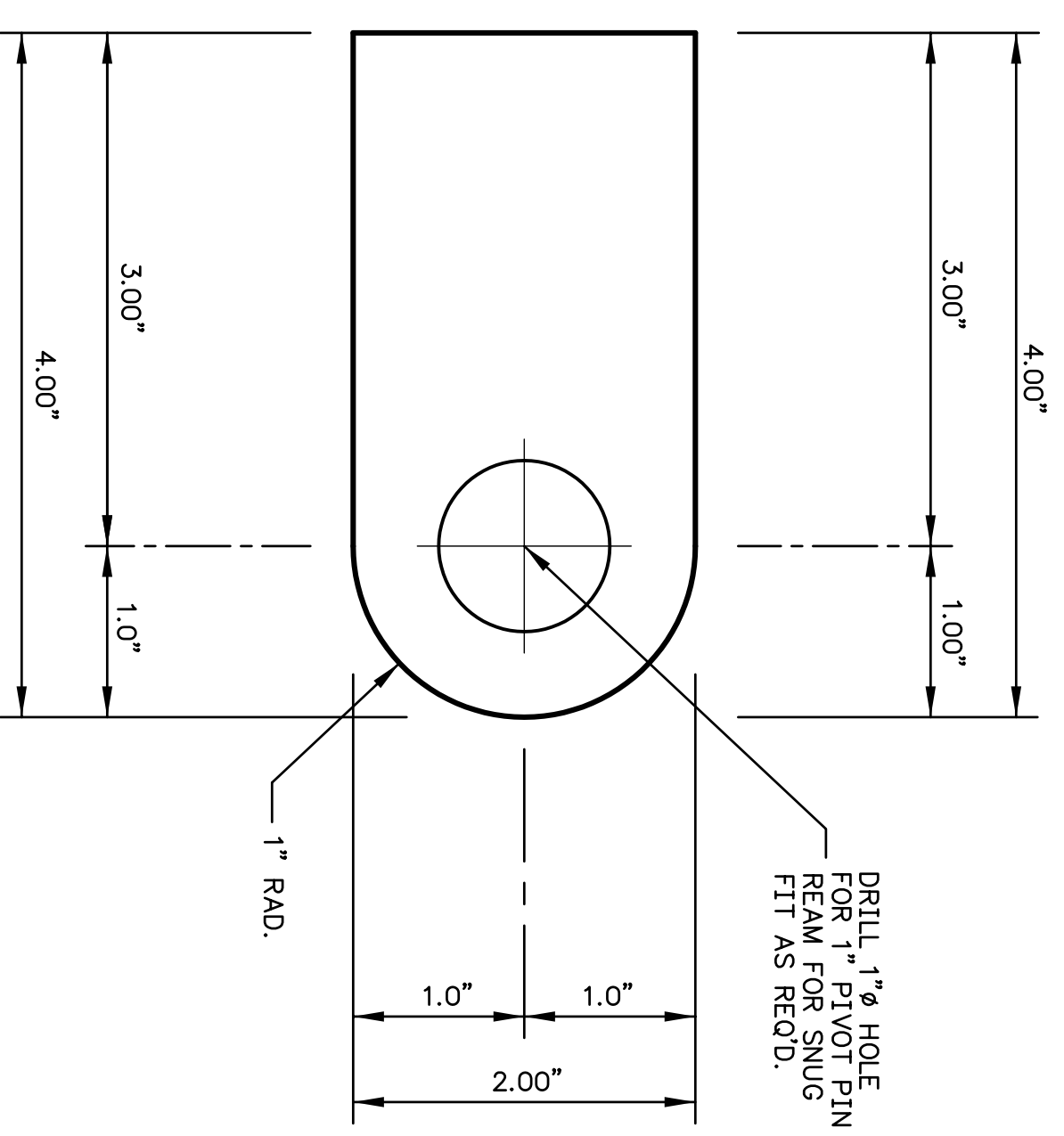
SIDE VIEW

9 RAM MOUNT PIVOT PLATE

SCALE 1" = 1" (FULL SIZE)
MAKE TWO FROM 2"x1/2" OR STEEL PLATE



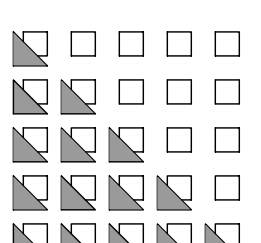
TOP VIEW



SIDE VIEW

7 DIE PIVOT PLATES

SCALE 1" = 1" (FULL SIZE)
MAKE TWO FROM 2"x3/4" OR STEEL PLATE



GARY W. WEISHAAPT

PERFORMANCE ENGINEERING
CHASSIS FABRICATION
FLOWBENCH TESTING
MACHINE WORK
RESTORATIONS

231 W. PA. 544, UNIT A110
MURKIN, PA. 17024
PH: 717-224-0200
CELL: 214-734-0200
EMAIL: gwe@230performance.com

| Revision | Date |
|--------------------|---------|
| • INITIAL LAYOUT | 5-18-11 |
| • GENERAL REVISION | 6-21-12 |

Key From

Project Title

AIR/HYDRAULIC
VERTICAL MOUNT
TUBING BENDER

| | |
|-------------------|----------|
| Drawn By | GMW |
| Scale | 6-21-12 |
| Checked By | HC |
| Title | 6-21-12 |
| Notes | AS NOTED |
| Part No. | - |
| Project No. | - |
| Sheet Description | - |

TYPICAL
PLATE STOCK
ASSEMBLIES

Sheet No.
VTB1.5