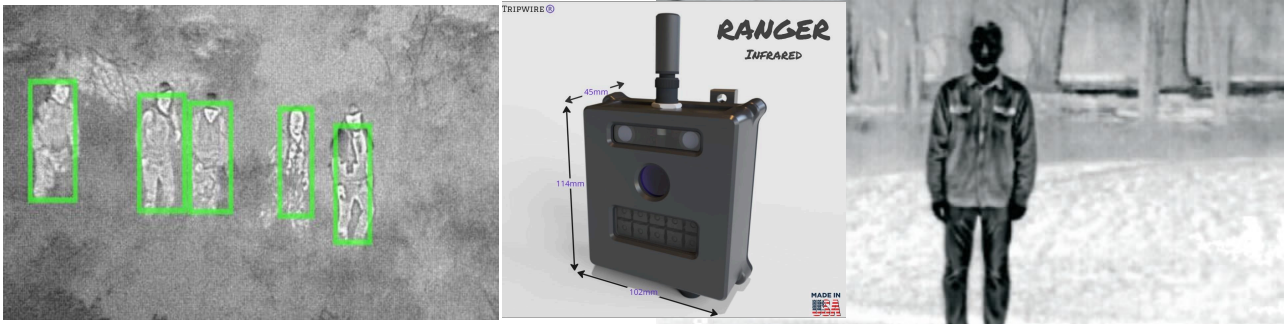




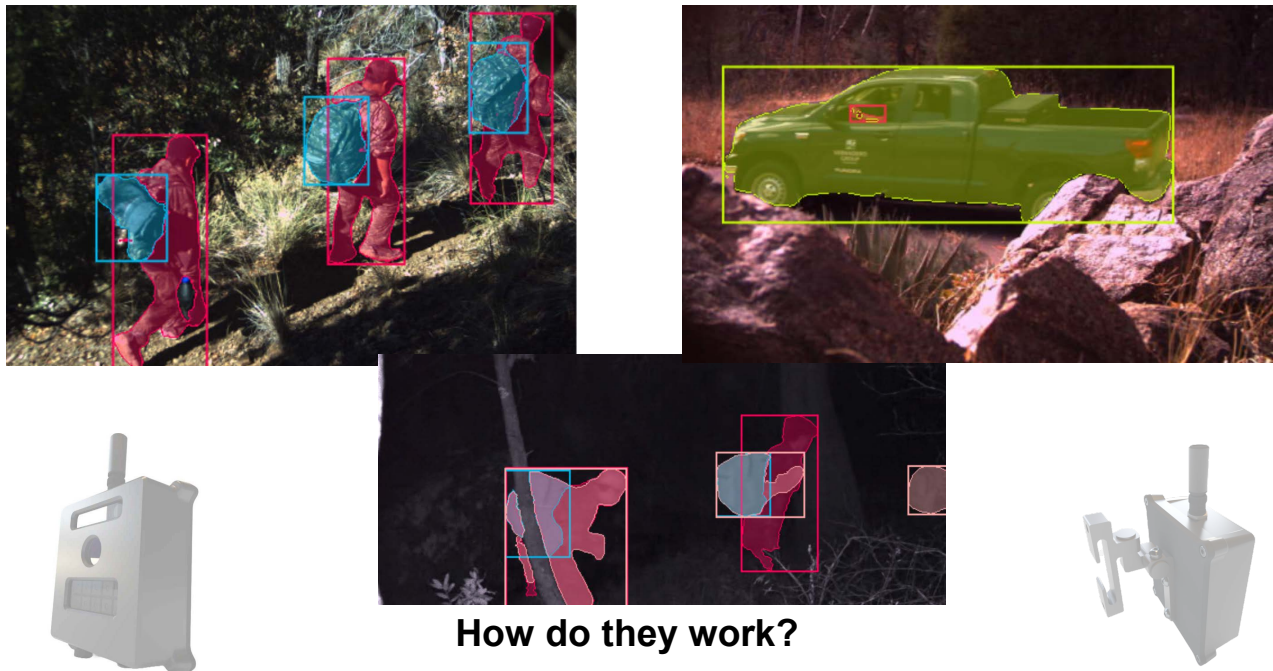
ISI Tripwire® Wireless System

Long Range Wireless Thermal and Infrared Cameras / Sensors

Edge AI with AES-256 Encryption



Machine Learning AI at the Edge



How do they work?

When a camera detects motion, a picture or video is immediately taken and transmitted to an AIO Base receiver. Pictures and videos are stored at the AIO Base with several different back-haul options available. Wi-Fi, Satellite, Cellular and Direct Network Connection. These also give the ability to control the Tripwire® field devices from anywhere in the world remotely.

The cameras are powered with rechargeable, LifePo4 or SLA batteries, and can take thousands of pictures on a single charge. Optional solar panel chargers are available to extend battery life indefinitely.

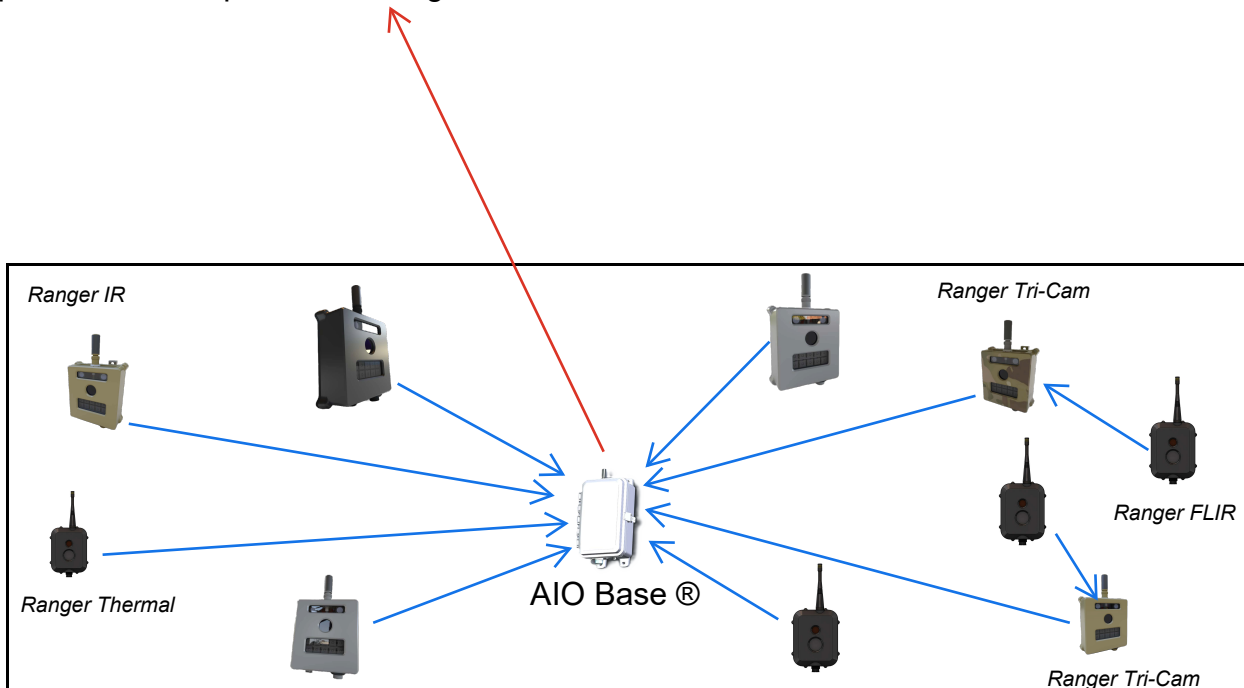
The camera and battery pack are housed in watertight, weatherproof enclosures for reliable outdoor operation.

The cameras can be up to 40 miles (line of sight) from the base, using optional High Gain antennas. The transmission distance can be increased even further by repeating through other Tripwire® network devices in the area.



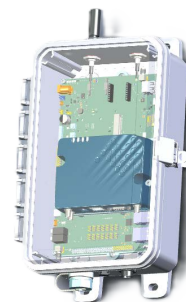
ISI Tripwire® System AIO Base® and Sensor System

- Control all field devices (hundreds per base) via Bluetooth, Wifi or remotely from anywhere in the World
- Pictures/videos may be automatically uploaded to a server of your choice, https, smtp, emailed plus API
- Transmission distance can be up to 2 miles with standard antennas, up to 40+ miles with High Gains
- Does not require any computer or software running anywhere
- No monthly fees - Cellular service is NOT required
- Multiple Back-Haul options including Wifi, Cellular, Starlink, Satellite, Email, Direct Server, API



Tripwire AIO (All In One) Base®

- Eliminates the need for a computer or software to be running
- Battery or wall power (US and EU voltages)
 - Solar options available
- Can back-haul data in a variety of ways
 - WiFi
 - Cellular
 - Starlink/Satellite
 - Secure Network (Ethernet)
 - Email
 - Plus a variety of blended technologies





Tripwire Ranger® Infrared Wireless Camera

- Compatible with all Tripwire® Wireless Systems
- Dual lens wireless camera with invisible 940nm infrared flash and color daytime
- AES 256 Encryption
- Bluetooth Interface
- **Edge AI** (optional upgrade)
 - **Only transmit targeted pics - no more nuisance images!**
- Built in Repeater
- Extremely Low Power Consumption
- Featuring ZMB2 Antenna
- Multiple power options available
 - Solar options



Tripwire Ranger® Thermal (FLIR) Wireless Camera

- Compatible with all Tripwire® Wireless Systems
- **Edge AI**
- AES 256 Encryption
- Bluetooth Interface
- Built in Repeater
- Extremely Low Power Consumption
- Featuring ZMB2 Custom Antenna
- Multiple power options available
 - Solar option plug and play



Tripwire Ranger® Bos on LWIR Thermal Wireless Camera

- Compatible with all Tripwire® Wireless Systems
- Edge AI
- AES 256 Encryption
- Bluetooth Interface
- Built in Repeater
- Extremely Low Power Consumption
- Featuring ZMB2 Custom Antenna
- Multiple power options available
 - Solar option plug and play



Tripwire Ranger Tri - Cam® Wireless Camera

- Compatible with all Tripwire® Wireless Systems
- 3 Cameras in 1!
 - Infrared, Day Color and FLIR Thermal Wireless Camera All In One!
- Edge AI
- AES 256 Encryption
- Bluetooth Interface
- Built in Repeater
- Extremely Low Power Consumption
- Featuring ZMB2 Antenna
- Multiple power options available
 - Solar option plug and play





ISI Interface (Bluetooth or WiFi)

*ATAK Compatible



The *Tripwire*® mobile app makes camera and base setup very easy. Any Android, iOS or ATAK mobile device. Control your entire system from your handheld!





Tripwire® Wireless System

Many Different Camera Models Available (all compatible)
 Ranger® Infrared, Ranger Thermal® and Ranger Tri-Camera®
 (Tri-Camera® is infrared, color day plus thermal all in one camera)

| | |
|-------------------------------------|---|
| Picture Format | User Selectable: Range from 5Mp down to 0.3Mp |
| Video Format | 640 x 360 pixels |
| Video Frame Rate | Up to 30 frames per second. |
| Video Length | 5 to 60 seconds. |
| Motion Detector Type | Passive Infrared (PIR) with external triggering options |
| Motion Detector Range | 300+' on human targets 1350'on vehicle targets |
| Motion Detector Detection Angle | 12 degrees |
| Reaction Time | 0.1 Seconds |
| Thermal Option | Thermal camera option available <i>Lepton and Boson</i> |
| RF Transmission Range | 3 miles (standard antennas) Distance may be increased with high gain antennas and / or repeaters. |
| Transmission Speed | Up to 200 kilo bytes per second - User Adjustable *Federally approved high speed |
| Encryption | AES-256 - Industry Leading |
| Edge AI - Built in Camera AI | Eliminates all nuisance images at the camera! |
| Low Light sensors | Minimizes motion blur |
| Maximum allowable antenna gain | 15.1 dBi (including cable losses) |
| Operating Temperature | -40 to 140 F |
| Battery Type | 12V SLA or 12V LifePO4 |
| Solar Panel | Optional solar panels sold separately |
| Communication Frequency Band | 902 to 928 MHz, software selectable channel mask for interference immunity |
| Transmitter Output Power | Up to 1W |
| Spread Spectrum | FHSS |
| Regulatory Approvals | |
| FCC (USA) | MCQ-XB9XR |
| IC (Canada) | 1846A-XB9XR |
| C-Tick (Australia) | Yes |
| Anatel (Brazil) | Yes |



"ISI"
Invictus Security INC

UEI: RHW3EBJCGPA5
 DUNS: 132818989
 Office: 239-205-3209
 sales@isiwireless.com
 www.isiwireless.com