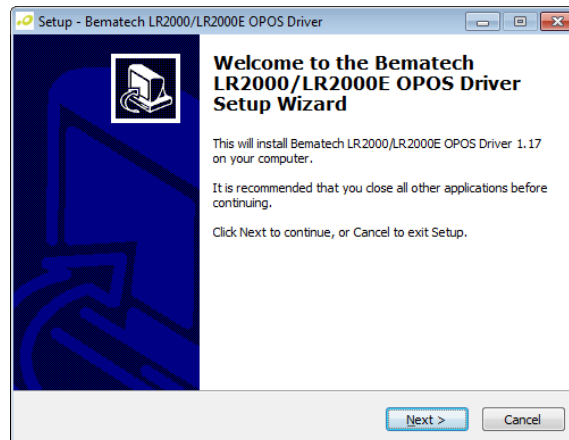


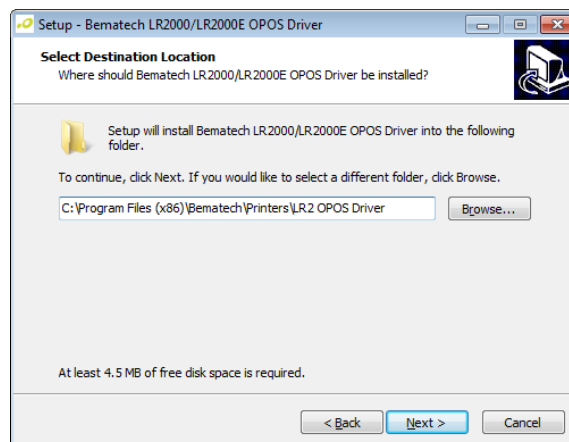
LR2000 THERMAL PRINTER OPOS DRIVER INSTALLATION

Software Installation

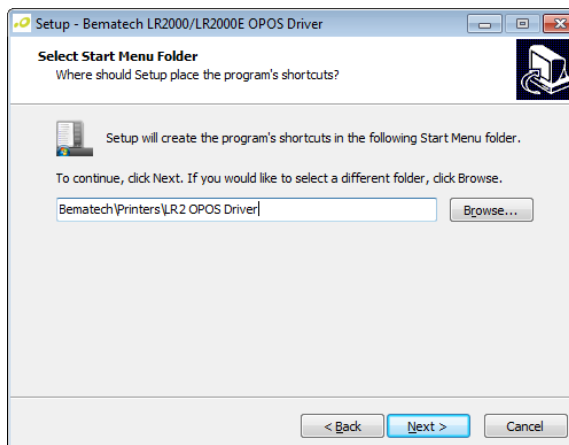
1. Double click on the file name "LR2OPOSInstall.exe" to start the installation. Then click "Next" to continue.



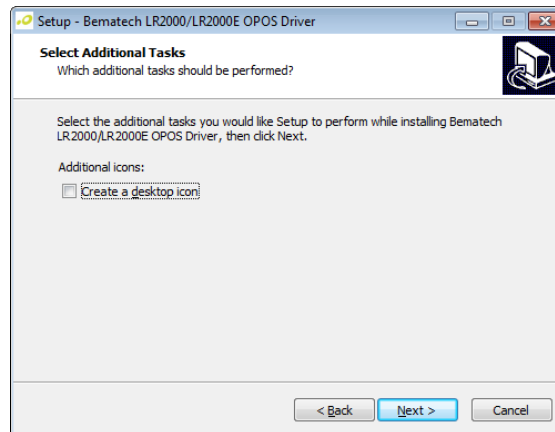
2. Change the install destination location if necessary or just accept the default location. Click "Next" to continue.



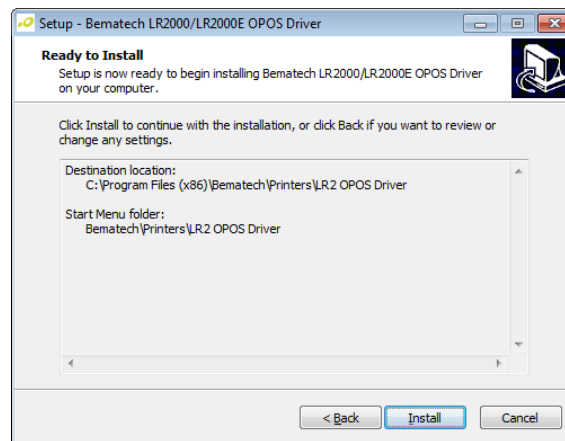
3. Select folder in Start Menu for placing the program shortcuts if desired or accept the default location. Click "Next" to continue.



- To create a desktop shortcut icon, check the box "Create a desktop icon". Otherwise leave it unchecked. Then click "Next" to continue.

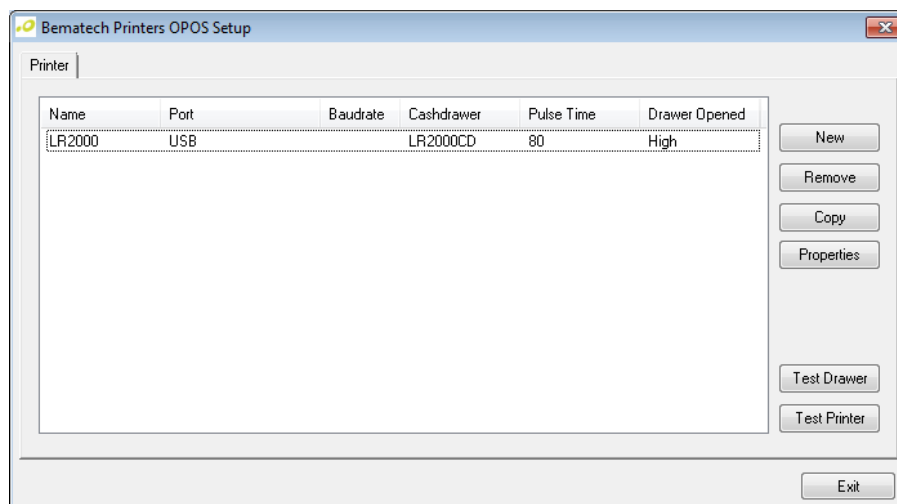


- Click "Install" to start installation and then click "Finish" to complete the installation.

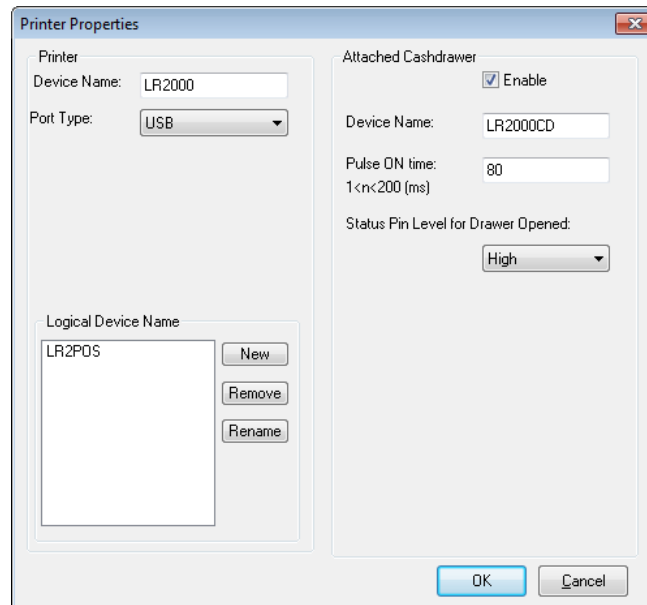


Driver Setup

- Start the OPOS driver setup program from the Start Menu or desktop shortcut (if created).



2. Double click on the line of the printer to be setup to start changing the properties. Alternatively, click on the line to highlight and then click on "Properties" button.



3. Select the "Port Type" used for connecting the printer to the computer. For serial interface, setup Port Name and Baud Rate. For Ethernet interface, setup IP address of printer and set Port Number to 9100.
4. Logical Device Names can be added so that POS applications can also connect to the printer with these additional names. Click on "New" button to create new LDN.
5. If cash drawer is connected to the printer, check the "Enable" checkbox. Then enter a device name for the cash drawer. Setup the pulse width for driving the drawer.
6. If necessary, setup the cash drawer "Status Pin Level for Drawer Opened" option to reflect correct drawer status matching to the printer status pin level read from the drawer.

Note: As the current USB printer interface does not read the drawer status, please just set this option to "High". The capability to read drawer status will be available soon.

7. Click "OK" to finish the properties setting.
8. Click on "Test Drawer" and "Test Printer" to verify that the printer and drawer are operating correctly. Then click "Exit" to finish.