

cluk

PRODUCT

CATALOG

2025



Sound



Light



FOLLOW-ME



Rigging



Display





Pieter Van de Velde,
Managing Director

About CLUK

I'm Pieter Van de Velde, Managing Director of CLUK. With my team, I specialize in delivering high-end dry hire solutions for the audiovisual industry. From cutting-edge lighting and rigging gear to innovative AV technologies, we supply top-tier equipment to rental companies and production houses all over the world.

We're proud to collaborate with leading brands like Elation, Minuit Une, Follow-Me, Columbus McKinnon, beMatrix, Straply, and many more.

For me, CLUK is more than just gear — it's a mindset.

Guided by our philosophy of "Connecting the Dots," we bring the right tools, talents, and technologies together to elevate productions of every scale. We think proactively, act fast, and work closely with our clients from the very first idea to the final applause.

As the official distributor of Columbus McKinnon chain hoists, we not only provide industry-leading rigging solutions but also certified servicing and maintenance to ensure safety, reliability, and long-term performance.

We're also proud to be an official beMatrix bePartner for their LED systems. This partnership allows us to offer dry hire of premium LED panels along with exceptional support — including 24/7 technical assistance and an in-house content creation team to help bring visuals to life.

From festivals to corporate events, from international tradeshow to immersive productions, CLUK is the behind-the-scenes partner that helps make the magic happen.

When the stakes are high and the vision is bold...

CLUK it — why not?





About CLUK

Your trusted AV-dry-hire partner.



Index

Quick guide to our catalogue.



Speaker Systems

High-performance sound solutions.



Static Lights

Cutting-edge lighting technology.



Moving Lights

Innovative Immersive Light effects.



Tracking system

Precision tracking system.



Lifting

Chain hoists & Lifts, sales and maintenance



Trusses & Decks

Strong, versatile staging support.



Display

LED panels, 24/7 support & content creation.



Terms & Conditions

All the essentials.



Practical info

Contact & operational details.





L-Acoustics K1

Stadium-Level Power, Unmatched Precision

The L-Acoustics K1 is the ultimate choice for large-scale touring and high-profile events. Engineered for stadium-class coverage, it delivers breathtaking SPL with exceptional clarity, even over extreme distances. Its modular line-array design ensures perfect scalability, while advanced Wavefront Sculpture Technology guarantees uniform sound distribution across every seat.

Trusted by the world's top production companies, the K1 is built for uncompromising performance, reliability, and impact.



System	Qty	Description
K1	24	L-Acoustics K1 Long Throw Speakers
	2	L-Acoustics K1 Bar / Bump



L-Acoustics K2

Power Meets Versatility

The L-Acoustics K2 brings arena-grade performance in a compact, lightweight format. Delivering powerful SPL and crystal-clear sound, it features Wavefront Sculpture Technology for perfect coverage and consistency across any audience area. Its modular design allows seamless scalability, from intimate venues to large outdoor stages, while its reduced weight makes it ideal for venues with strict rigging limits.

System	Qty	Description
K2	24	L-Acoustics K2 Top Passive Speaker
	2	L-Acoustics K2 Bar / Bump
	2	L-Acoustics K2 Link





L-Acoustics Kara II

Compact Size, Big Impact

The L-Acoustics Kara II delivers exceptional performance in a versatile, compact line-array format. Featuring Panflex™ technology, it offers four adjustable directivity settings for unmatched coverage control, ensuring consistent, crystal-clear sound in any venue. Lightweight yet powerful, the Kara II is ideal for both standalone systems and as a complement to larger arrays like K1 or K2.

With its combination of flexibility, precision, and signature L-Acoustics sonic quality, the Kara II is the perfect choice for corporate events, festivals, and touring productions.

Renowned for its flexibility and sonic excellence, the K2 is the system of choice for productions where precision, power, and adaptability are key.

System	Qty	Description
Kara II	48	L-Acoustics Kara II Top Passive Speakers
	2	L-Acoustics Kara II Bar / Bump
	2	L-Acoustics Pull Back Plate for Kara II

L-Acoustics KS28

Extreme Low-End Authority

The L-Acoustics KS28 is a high-power reference subwoofer designed for large-scale sound reinforcement. Featuring two 18" drivers in a bass-reflex, front-loaded configuration, it delivers tight, ultra-powerful low frequencies with absolute precision. Optimized for use with K1, K2, and Kara II systems, the KS28 ensures maximum impact while maintaining sonic clarity, even at extreme SPL.



System	Qty	Description
KS28	36	L-Acoustics KS28 High-Power 18" Dual Subwoofer Passive Speaker
	2	L-Acoustics KS28 Bar



L-Acoustics SB18

Flexible, Musical Low-End

The SB18 delivers powerful, controlled low frequencies in a compact, lightweight design. Perfect for complementing Kara II and other systems, it's ideal for touring and fixed installs.



L-Acoustics X8

Studio Clarity on Stage

The X8 delivers pristine, high-definition sound in a compact, multipurpose enclosure. Perfect as a stage monitor or fill, it offers ultra-fast transients and exceptional vocal intelligibility.



L-Acoustics X12

Power and Versatility

The X12 combines high SPL capability with flexible deployment as a monitor, fill, or standalone system. Lightweight and rugged, it delivers consistent, premium sound anywhere.



L-Acoustics 5XT

Ultra-Compact Precision

The 5XT packs surprising performance into the smallest L-Acoustics format. Ideal for discreet fills, delays, and immersive applications where space is limited.



L-Acoustics HiQ15

High-Performance Monitoring

The HiQ15 is a powerful, low-profile stage monitor with exceptional gain-before-feedback. Trusted by professionals for its clarity, punch, and touring-ready durability.

System	Qty	Description
SB18	18	L-Acoustics SB18 High-Power 18" Subwoofer Passive Speaker
X8	28	L-Acoustics X8 8" Two Way Monitor
	28	L-Acoustics X-US8 Short U Bracket For X8
X12	17	L-Acoustics X12 12" Two Way Monitor
	17	L-Acoustics X-US1215 Short U Bracket For X12 & X15
5XT	75	L-Acoustics 5XT Ultra Compact 5" 2 Way Passive Speaker
	75	L-Acoustics ETR5 Adjustable U Bracket For 5XT
HIQ15	16	L-Acoustics HiQ X15 2-way Active 15" Point Source Speaker





L-Acoustics Syva Family

Design Meets Performance

The Syva system combines striking elegance with uncompromising L-Acoustics sound. Designed for premium events, houses of worship, and high-end corporate applications, Syva delivers stunning clarity, long throw, and even coverage – all in a slim, visually discreet form.

Syva – Column array main unit with patented waveguide technology for crystal-clear coverage and remarkable throw.

Syva Low – Companion enclosure extending system response down to 40 Hz for warm, punchy, musical bass.

Syva Sub – Ultra-low extension down to 27 Hz for deep, controlled bass you can feel as much as hear.

System	Qty	Description
SYVA	12	L-Acoustics Syva Base
	12	L-Acoustics Syva Two Way Top
	12	L-Acoustics Syva Low Dual 12"
	12	L-Acoustics Syva Sub Dual 12"
	7	L-Acoustics Syva Rigging Bar
	6	L- Acoustics Syva Wall Bracket



Not finding it here?

CLUK it – we'll make it happen.





L-Acoustics LA-RAK II / LA-RAK II AVB

All the power you need, ready to roll

Fully equipped touring racks with high-efficiency amplification, system control, and network-ready AVB compatibility for streamlined deployment.



L-Acoustics LA4X

Small in size, huge in precision

Four-channel amplified controller, combining high power with advanced DSP for smaller to mid-size



L-Acoustics LA12X

When nothing but maximum performance will do

Flagship amplified controller, delivering extreme headroom and ultimate control for the most demanding applications.



L-Acoustics P1

Your sound, perfectly measured and aligned

P1 Processor – Combining AVB bridge, time-alignment, EQ, and measurement tools in one powerful unit.



Luminex GigaCore 30i

The backbone your network deserves

Rugged, high-performance AV network switch optimized for audio, video, and lighting data.

System	Qty	Description
LA	4	L-Acoustics - LA RAK - II - With AVB
	5	L-Acoustics - LA RAK - II
	23	L-Acoustics LA4X Amplifier
	16	L-Acoustics LA12X Amplifiers
	2	L-Acoustics P1 Processor
Luminex	4	Luminex - Gigacore 30i Network Switch AVB Switch





Photo: Ushuaia Dubai 2024





Elation SOL i Blinder

Brighten the moment with precision and power

The Elation SOL i Blinder is a powerful, versatile LED blinder delivering intensely bright, smooth white light with precise color temperature control. Perfect for creating dramatic stage effects or washing the audience in atmospheric illumination.

This unit comes complete with a full accessory kit: frost and fresnel lenses for varied beam spreads, Bowens adaptor for quick customization, gel frame and barndoors for color and light shaping, omega bracket for easy mounting, and jumper cables for hassle-free connectivity.



Fresnel Lens



Frost Lens



Bowens Adaptor



Gel-Frame



Barndoor



Interconnect



Jumper cable

System	Qty	Description
SOL i	120	Elation – Sol I Blinder
	120	Elation – Sol I Blinder Frost Lens
	120	Elation – Sol I Blinder Frensel Lens
	120	Elation – Sol I Blinder Bowens Adaptor
	120	Elation – Sol I Blinder Gel Frame Holder
	120	Elation – Sol I Blinder Barndoor
	120	Elation – Sol I Blinder Interconnect
	120	Elation – Sol i Blinder Omega Bracket
	120	Elation – Sol i Blinder Jumper Cable



Elation Six+ Par S

Compact power with vibrant color impact



The Six+ Par S is a compact yet powerful LED par light delivering rich, saturated colors and smooth dimming. Its multi-chip RGBMA+UV LEDs ensure wide color gamut and excellent color mixing for dynamic stage lighting and architectural effects.

Designed for flexibility, it includes multiple beam angles and silent operation—ideal for theaters, live events, and installations

Elation Six+ Par L

Bigger, brighter, and built to impress



The Six+ Par L delivers all the vibrant, precise color performance of the Six+ Par S — but with a larger form factor and higher output. Packed with RGBMA+UV LED technology, it produces exceptional color mixing, smooth dimming, and stunning whites. Ideal for large-scale events, stages, and architectural lighting projects

SGM P5

Architectural power. Touring reliability



The SGM P5 is a high-output RGBW wash light built for both outdoor and indoor use. With its extreme brightness, rich color rendering, and IP65 rating, it's perfect for lighting buildings, stages, or large-scale events — rain or shine. Compact, silent, and energy-efficient, it's a go-to fixture for impactful washes in any environment.

Astera Titan Tube

Creative freedom in a tube

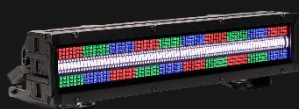


The Astera Titan Tube delivers vivid colors, beautiful whites, and full wireless control in a portable, battery-powered form. Perfect for film, TV, live events, and creative stage design, it offers flexible mounting options and up to 20 hours of operation on a single charge. From subtle mood lighting to bold effects, Titan Tubes open endless creative possibilities.



Elation Pulse Bar S

Dynamic effects in a sleek, compact bar

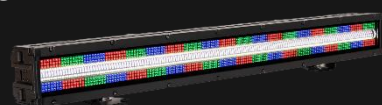


The Pulse Bar S packs bold, pixel-mapped effects into a slim, lightweight design. Perfect for adding motion and energy to stage backdrops, set designs, or architectural features. Compact, quick to install, and ideal for both touring and fixed installations.

Elation Pulse Bar L

Go big or go bold

The Pulse Bar L offers the same dynamic pixel effects as the Pulse Bar S, but with more length, more output, and more impact. Perfect for large-scale stages, arena shows, and immersive environments where visual presence matters.



Elation Pulse Panel

Pixel-perfect creativity



The Pulse Panel is a high-output, pixel-mappable LED panel designed for creative visual effects. From eye-catching chases to smooth color fades, it delivers unmatched flexibility for concerts, TV studios, and events. Lightweight and easy to rig for rapid

Elation Pulse Panel FX

The panel that moves

The Pulse Panel FX takes all the vibrant, pixel-mapped power of the Pulse Panel — and adds motorized tilt for dynamic movement. Create sweeping visual effects, immersive backdrops, and evolving looks that bring your stage to life.

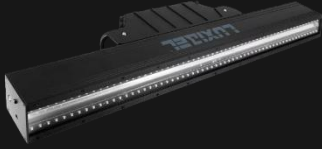


System	Qty	Description
Pulse	24	Elation Pulse Bar S
	48	Elation Pulse Bar L
	12	Elation Pulse Panel
	24	Elation Pulse Panel FX



Luxibel B Blast Pro

High-impact blinder with LED efficiency



The Luxibel B Blast Pro combines the punch of a traditional audience blinder with the efficiency and versatility of LED technology. Its powerful warm-white COB LEDs deliver stunning crowd effects, while variable dimming and chase patterns add dynamic visual impact to concerts, festivals, and live events. Built for touring durability and easy rigging.

Philips Showline SL Nitro 510C

Explosive strobe, full-color creativity



The SL Nitro 510C brings the energy of a high-output LED strobe together with full RGBW color mixing. Delivering intense white flashes or vibrant color washes, it's perfect for high-energy shows, festivals, and stage effects. With its wide coverage and instant response, it adds both drama and versatility to any lighting design.

Clay Paky Stormy CC

Classic strobe meets modern LED



The Stormy CC redefines the traditional strobe by replacing xenon with 144 powerful RGBW Osram LEDs. This delivers a classic strobe look with full-color capability, flicker-free performance for camera work, and low power consumption. Perfect for creating everything from blinding white bursts to rich, saturated effects — indoors or out.

System	Qty	Description
B Blast	180	Luxibel B Blast Pro
Nitro	36	Philips Showline Nitro 510C
Stormy	16	Clay Paky Stormy CC



Elation Paragon S

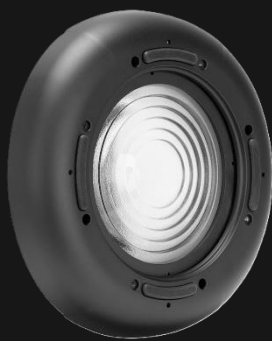
Compact powerhouse, complete with every option

The Elation Paragon S is a high-performance, compact par fixture designed for maximum versatility and creative freedom. Powered by advanced LED technology, it delivers rich, vibrant colors and precision white tones with smooth dimming curves.

What sets the Paragon S apart is the complete accessory package included in CLUK's dry-hire: every optional lens is part of the kit, giving you instant flexibility in beam shaping and spread control — from narrow, focused beams to wide,



System	Qty	Description
Paragon S	50	Elation Paragon S
	50	Elation Paragon S Fresnel Lens
	50	Elation Paragon S PC Lens
	50	Elation Paragon S Snoot



Fresnel Lens



PC Lens



Snoot





AYRTON



Ayrton Cobra

Extreme beam power, limitless reach

The Ayrton Cobra is a laser-sourced IP65 beam light built for unmatched long-distance projection and razor-sharp aerial effects. With incredible intensity, ultra-precise beam control, and a weatherproof design, Cobra cuts through any environment — from stadium shows to outdoor festivals — delivering a truly iconic beam look.



Ayrton Rivale

The all-weather hybrid performer

The Ayrton Rivale is a compact, IP65-rated hybrid fixture that combines spot, beam, and wash capabilities in one rugged design. With brilliant output, fast movement, and refined optics, Rivale thrives both indoors and outdoors — making it a versatile workhorse for touring, events, and fixed installations.



System	Qty	Description
Cobra	200	Ayrton Cobra
Rivale	100	Ayrton Rivale



Clay Paky Skylos

The beam that owns the sky

The Clay Paky Skylos is an ultra-high-power beam light that redefines what's possible for outdoor and large-scale events. Using a custom 300W laser source, Skylos projects an intensely bright, sharp beam visible for kilometers, even in challenging weather conditions.

Clay Paky Sharpy 190 Beam

Small body, huge beam

The Sharpy 190 Beam delivers a razor-sharp, ultra-concentrated beam with astonishing brightness for its compact size. Fast, precise, and packed with effects, it's perfect for creating punchy aerial looks in any show.



Clay Paky Sharpy 300 Wash

Compact wash, powerful coverage

The Sharpy 300 Wash offers rich, even color mixing and wide coverage in a small, tour-ready design. Ideal for stage, TV, and events where vibrant washes and quick repositioning are key.

Ayrton Cobra

Wash, beam, and FX in one.

The A.leda B-EYE combines high-quality wash lighting, a sharp beam mode, and unique lens effects in one versatile fixture. Perfect for dynamic looks that mix stunning visuals with rich, consistent color.



System	Qty	Description
Skylos	50	Claypaky Skylos
Sharpy 190	24	Clay Paky Sharpy 190W Beam
Sharpy 300	12	Clay Paky Sharpy 330W Wash
Led A	20	Clay Paky A.Leda B-Eye K20 37x15W RGBW LED Wash



