

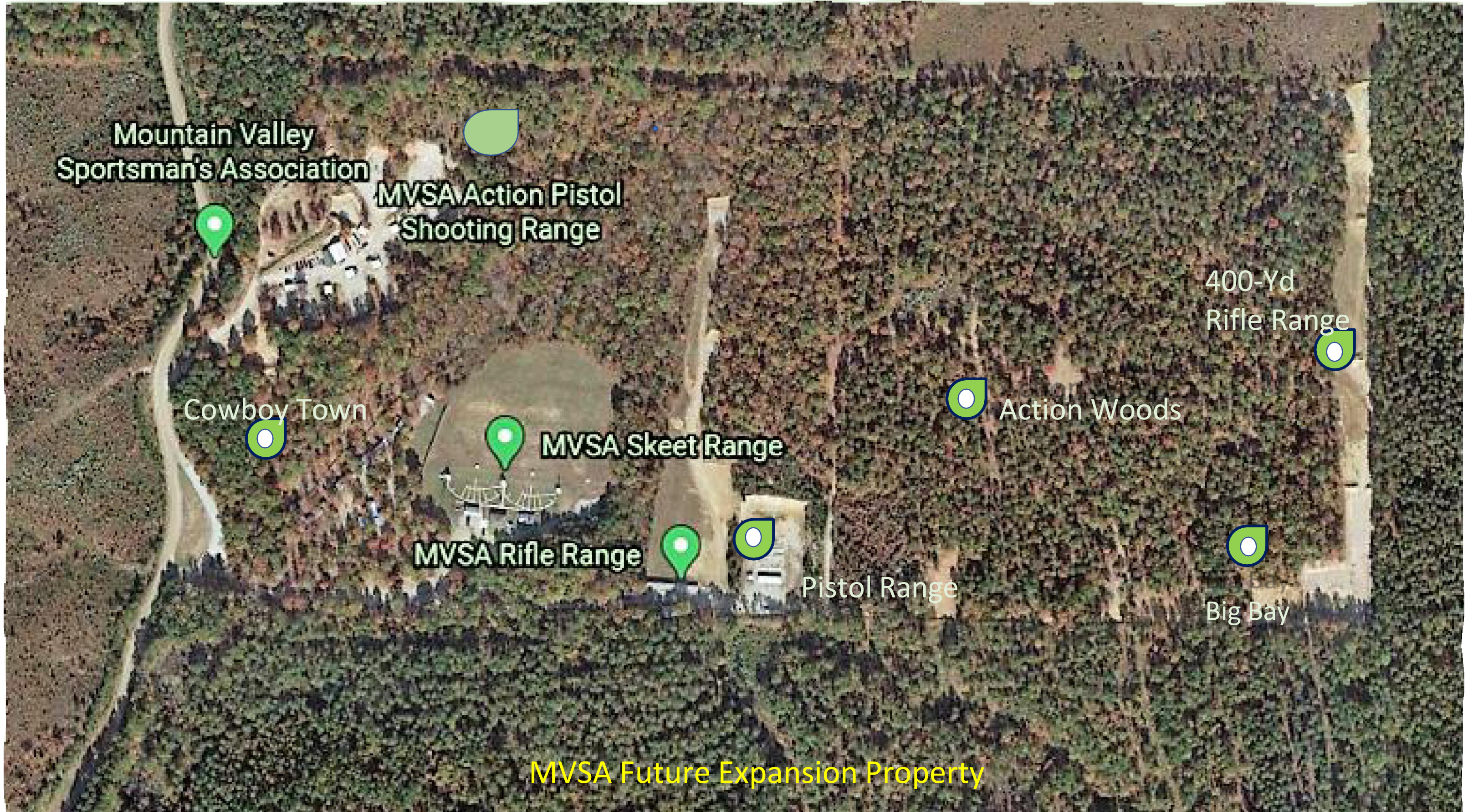
Mountain Valley Sportsman's Association



Member Manual

Rev. 06022026

Mountain Valley Sportsman's Association Range Map



MVSA Member Manual

Table of Contents

Range Map	1
Message from the Board of Directors... ..	4
Mountain Valley Sportsman’s Association Policies.....	4
Overall Policy on Range Use.....	4
Safety	5
Cold Range Policy.....	6
Policy on Minor Children.....	6
Caretaker Policy	7
Policy on Gate Operation	7
Guest Policy	7
Group Policy / Reserved Space Policy	7
Policy on Waiver and Release Agreement	8
Gate Key Policy	8
Policy on Alcoholic Beverages... ..	8
Policy on Allowed Firearms and Ammunition	9
Venue Specific Section	9
Venue Chairs	10
Match Directors	11
Shooting Ranges at MVSA	12
Action Shooting Range Rules.	13

MVSA Member Manual

Woods Ranges & 400-Yard Rifle Range Rules	15
Precision Rifle Shooting Range Rules	17
Cowboy Action Range (Mountain Valley Vigilantes) Rules.....	18
Rifle Range Rules.....	19
Pistol & Rimfire Rifle Range Rules	21
Guns Allowed on Rimfire Rifle and Pistol Ranges	23
Skeet and Trap Range Rules	24
MVSA Website & Communications.....	25
Membership and Renewals	28
Smoke N' Chips Clay Shooting Park	29
MVSA By-Laws.....	30
Guest Waiver (for copying)	36

MVSA Member Manual

Message from the Board of Directors

Welcome to **Mountain Valley Sportsman's Association**. You have joined a volunteer, not for profit organization formed to promote the safe enjoyment of the shooting sports. Our range is a premier facility in Garland County that includes a wide variety of shooting venues. Multiple Rifle Ranges; Trap & Skeet; Cowboy Action; and Action Shooting/IDPA are some of the areas built for your shooting enjoyment. The main rifle range has 100-, 200- and 300-yard ranges with covered, fixed shooting benches, and there is a 50-yard Pistol range as well. A 400-yard rifle range is also available, open to members who have qualified to use this mostly-competition area. MVSA is a work-in-progress and is constantly being upgraded. Additional shooting facilities will be added as member interest, time, and money are available. See our website at <https://mvsaonline.com/> for scheduled activities, venue descriptions and facilities, membership and renewal information, MVSA venue, officer, and board of director contacts, and much more.

Please read this Member's Manual carefully so that you are aware of your responsibilities to this organization. We hope you and your family enjoy years of safe, fun shooting, as well as participating in the many and varied shooting opportunities offered. This is your club: use it for your enjoyment, keep it safe and clean, and help make it a better place to shoot.

Mountain Valley Sportsman's Association Policies as Adopted by the Board of Directors

Overall Policy on Range Use

MVSA Range hours are daylight hours only. No night shooting is allowed unless part of an organized match or otherwise approved by the Board of Directors. Night, as defined by the Arkansas Game and Fish Commission, is the time period 30 minutes after sunset to 30 minutes before sunrise.

MVSA members, guests, or visitors may not enter MVSA property after the official range hours, as specified above. If a guest or visitor needs to gain entry after the policy hours, they must seek a Venue Chairman's or a Board Member's permission and must have one of these individuals or their designee accompany the individual onto MVSA property. MVSA members in good standing (and the MVSA caretaker) must seek permission from a Venue Chairman or Board Member to enter the range after hours.

Members are encouraged to use the various range facilities during range hours either individually or with the group in a scheduled match or activity. Following are general range policies. Refer to venue specific policies for more detail. There is no shooting on undeveloped areas of the range without board permission.

There is no hunting on club property. The posted Speed Limit on club property for all vehicles is **10MPH**.

MVSA Member Manual

Safety

All shooters and spectators must wear eye and hearing protection.

Everyone handling firearms must follow the **Four Rules of Gun Safety**:

1. **Treat every firearm as though it is loaded, even if you are certain it is empty;**
2. **Never let the muzzle of your firearm cover anything you are not willing to destroy;**
3. **Keep your finger off the trigger until your sights are on your target;**
4. **Identify your target and what is behind it before firing.**

In keeping with Rule 4 above, all pistol and rifle shots must impact a designated berm or plate.

Shotgun pellets can be discharged into the air only when shooting at an airborne clay bird, on a course of fire designed to provide ample safe clearance behind the clay targets.

MVSA is monitored by video surveillance, and we do identify offenders. Misuse of the range or violation of range rules are subject to review by the Board of Directors. Loss of club membership may result.

Pistol Use:

If you visit the range to practice pistol shooting, do so only at either the Action Shooting Range bays or the 50-yard Pistol range. The only handguns permitted on the rifle range are handguns legal for hunting, and all rounds fired must impact a berm.

Rifle Use:

If you intend to shoot your rifle at 100 to 300 Yards, or to sight it in at 25 or 50 yards, please do so at the rifle range using the benches designated for those distances. For short range rifle shooting, you may also use the Action Shooting Range (distances up to 25 yards only).

Shotgun Use:

If you want to shoot your shotgun you may do this at the Action Shooting Range or Skeet/Trap Range. If you are shooting slugs you may do this at the 100-yard Rifle Range only if the slugs impact the 100-yard berm. Slugs must not be fired at the steel silhouettes or gongs, as they can damage these targets.

Cowboy Action Firearm Use:

Do not shoot in the Cowboy Town venue unless you are an approved cowboy action shooter. An approved cowboy action shooter is someone who has completed the Cowboy Action Newbie School training class. The steel cowboy targets are designed for soft lead, low-velocity bullets only. If you are not a cowboy shooter, do not shoot at this venue without supervision by a cowboy action shooter.

MVSA Member Manual

Target Stand & Stick Use:

When stapling targets to any target stands left on the range by MVSA for membership use, you must attach the target in such a way that the intended path of the bullet is “between” the support sticks. If you staple or affix a target directly to the stand, resulting in that stand being shot up so it is no longer usable, you are destroying club property and are subject to disciplinary action up to, and including, dismissal from the club.

Only approved firearms, ammunition, and gear may be used for each of the various venues and events. Beyond what has been covered above, see the venue-specific section in this manual, or talk with venue event directors for specific guidance.

Cold Range Policy

MVSA has a **cold range policy** for all venues and ranges. This policy prohibits loaded firearms from being carried on the property until you are on a designated shooting station and ready to fire. The MVSA Board of Directors has done this to promote safety. Normally, when you are participating in an organized shooting match or activity, a range safety officer will give directions as to when you can load ammunition into your firearm. At all other times your firearms are to be unloaded.

On the rifle and pistol ranges, firearms shall not be loaded until you are set up and you are certain the entire area downrange is clear of personnel.

The only exception to the cold range policy is for those people who have an Arkansas Concealed Handgun Carry License, or another state-issued concealed carry license recognized by the State of Arkansas. Those people may carry a loaded pistol on their person only if it remains concealed. If the pistol is exposed in any way (example: to show a friend or to use in a match) it must be unloaded. Also, some venues will not permit you to carry concealed while competing in a scheduled match. Consult the individual venue rules to see if they restrict concealed carry during their matches. If the scheduled match you are competing in does restrict concealed carry, then secure your carry pistol in your vehicle while you participate in the match. You may retrieve your concealed carry pistol and resume wearing it once your participation in the match is concluded.

We ask each member to diligently observe this policy for everyone’s shooting safety.

Policy on Minor Children

MVSA always welcomes families to participate in shooting activities. However, due to the nature of our sport, it is extremely important that minor children never be unattended while at the range. There have been instances in the past when parents have allowed children to wander while they were shooting. This is highly dangerous; therefore, it is understood that children must always be attended.

MVSA Member Manual

Caretaker Policy

MVSA desires to have a Caretaker on the premises always. If you are approached by the Caretaker (or any other designated range officer or Safety Team member) who identifies himself or herself, you are required to identify yourself so that the Caretaker is aware that you are a member or accompanied guest. The Caretaker is not an employee of MVSA and should not be treated as such. Any concerns should be directed to a club officer or other member of the Board of Directors.

Policy on Gate Operation

If you are using the range when no venues are conducting matches or activities you can expect to find the gates closed and locked, even though there may be other members already at the range. You are required to lock the gate after you enter and when you leave the range.

The gates are to be kept closed except when scheduled shooting matches or scheduled activities are being conducted. MVSA Match Directors will open the gates prior to, and close the gates upon conclusion of, their respective events.

Guest Policy

MVSA is a private membership organization, and the range is not open to the public except for scheduled activities. Each membership is a family membership and covers you, your spouse, and any dependent children under the age of 21 who live in the house with you. Members may bring guests to participate in shooting activities and are responsible for their guests' shooting and conduct. Each membership (comprised of all eligible family members) is limited to five (5) guests at the range at any one time. **Voluntary donations of \$5.00 per guest are appreciated to maintain target stands, equipment, and help defer the costs of range maintenance.** Check with the respective venue chairman to find out where you should have guests deposit their donation if it is not specified in the venue section of this manual.

Group Policy / Reserved Space Policy

Members in good standing may hold group outings or events, subject to the limitations of the Guest Policy (i.e., 5 guests per membership), and reserve specific locations with the approval of the Venue Chairperson. Groups larger than Guest Policy allows must be sponsored by enough individual memberships (which can also be thought of as "gate key cardholders") to maintain the 5 guests per membership ratio. For example, a group involving 15 guests must be sponsored and accompanied by at least three gate key cardholders. Exceptions to this rule must be approved in advance by the Venue Chair, club officer, or Board of Directors.

Scheduling group outings or events requires a minimum of 72 hours' advance notice, and will be placed on MVSA's website calendar, noting the contact information for the member organizing the outing or event, and its specific location. This scheduling requirement for groups will allow

MVSA Member Manual

other members who plan on visiting or using the MVSA facility to check a venue's availability prior to traveling to the range. **To reserve space for your group or activity, members should email the Venue Chairperson as soon as possible (but no less than 72 hours prior) with the specific location, details, size of group, and dates/times desired.** A response and decision will be made, in most cases, within 24-48 hours of the request.

The Group Policy includes law enforcement agencies, church security teams, training classes, and other member groups. Exceptions to the limitations of the Group Policy must be specifically approved by the affected Venue Chairperson(s).

Policy on Waiver and Release Agreement

Each member is required to sign a Waiver and Release Agreement each year. Every guest that will be shooting with that member must also sign a waiver prior to shooting, and it is the responsibility of the member to ensure that they comply. There is a blank waiver form in the back of this manual for you to photocopy for your guests. The waiver form can also be printed off the club website (<https://mvsaonline.com/membership>). Check with your Venue Chair to find out where you should deposit your guest's waiver when shooting at that venue if it is not specified in the venue section of this manual.

Gate Key Policy

Pursuant to Board action, if a gate key card is issued to a member, a non-refundable deposit will be required. One gate key card will be issued per membership (i.e., family unit). The cost of replacement of a lost key issued will be equal to the deposit. No key card may be loaned to a non-member; this would constitute misuse of the range and would subject the member to possible disciplinary action.

Policy on Alcoholic Beverages

No one may consume alcohol on club property before or while handling any gun. Alcohol is only allowed once shooting is finished and all guns have been put away for a venue and the venue chairman or range officer declares the venue closed. Then, only the following areas of the property may be used for the consumption of alcoholic beverages:

- The Cowboy Pavilion, park, and adjacent camping area;
- The caretaker's area;
- Any other such area as the Board of Directors or Venue Chair may designate.

Only beer and wine type beverages will be allowed. Hard liquor will be allowed in the above areas only at non-shooting social events that have been pre-approved by the Board of Directors.

The Board may elect to ban all alcohol from the range, as it deems appropriate, during approved events such as Boy Scouts, church groups, youth activities, etc.

MVSA Member Manual

Anyone found to be under the influence of alcohol or illegal drugs, and witnessed by other club members, shall be asked to leave the property, and will be brought before the Board of Directors for explanation and possible membership revocation.

Policy on Allowed Firearms and Ammunition

MVSA does not allow the use of fully automatic firearms at any of its ranges. This is a safety and liability issue, and subject to change (and exception) only by Board of Directors action. This rule also prohibits the use of any firearm or device that simulates full auto fire. Examples include, but are not limited to, trigger, sear, or hammer activators; modified disconnectors; bump stocks; slide fire devices; Gatling-style guns; binary or echo triggers; or any other device or firearm modification that simulates full auto fire. It may be legal to BATFE, but it is not allowed at MVSA. You know what is intended here; do not attempt to get around this rule. If you break this rule it will be considered a major safety violation and will lead to disciplinary action up to revoking your membership.

No 50 cal. BMG or tracer ammunition is permitted to be used on MVSA property.

No armor piercing or steel core ammunition is permitted to be used on any metal targets. No exploding targets are permitted to be used on MVSA property. The MVSA board of directors shall have the right to grant temporary exceptions to these rules upon request for law enforcement or special events.

Venue-Specific Section

The following rules govern the range use at each venue. Before using any range for a non-scheduled event such as practice, determine if the range is open and not closed for maintenance, or has been prepared for a pending match. If you are unsure of any provision for the use of that venue's range, contact the venue chairman or a member of the Board of Directors.

Misuse of a venue or violation of range rules are subject to review by the Board of Directors and possible loss of club membership may result.

MVSA Member Manual

Venue Chairs

- Action Shooting Range
 - Mike Mercer
 - mjsurg@yahoo.com
 - 870-830-2724
- Cowboy Action / Mountain Valley Vigilantes
 - Glen Irvin
 - rgirvin@hotmail.com
 - 501-337-9368
- Trap & Skeet Range
 - Adam Drennan
 - adamclay75@yahoo.com
 - 501-944-3664
- Rifle / Pistol / Small Bore Range
 - John Schroeder
 - j_o_schroeder@yahoo.com
 - 501-681-7751
- Woods & 400-Yard Rifle Ranges
 - John Tinney
 - johntinney@att.net
 - 501-622-9316
- Long Range Rifle / PRS
 - Zach Washington
 - Zwash86@yahoo.com
 - 501-617-8130

MVSA Member Manual

Match Directors

- IDPA Match Director
 - Justin Green
 - jgreen@mseco.com
 - 870-820-2382
- Ladies on Target, A Girl & A Gun Match Director
 - Tessa Michna
 - ladiesontarget.mvsa@gmail.com
- Rimfire Match Director
 - John Tinney
 - johntinney@att.net
 - 501-428-0336
- MultiGun Match Co-Director
 - Cash Murray
 - mmurrayb92fs@att.net
 - 318-464-4891

1. **Cowboy Action** – 10 Store Fronts
2. **Trap & Skeet** – 3 Trap & Skeet fields
3. **Main Rifle Range** – 100-200-300 Yard Range with 12 shooting benches
4. **Rimfire Rifle Target Range** – 50-Yard Range with 2 shooting benches
5. **Pistol Target Range** – Multiple shooting stations with Steel targets or Paper target stands
6. **Multi-Gun Near Woods** – Steel & Paper targets
7. **Multi-Gun Far Woods** – Steel & Paper targets
8. **Long-Range Rifle** – 400-Yard Rifle Range with 100-200-250-300-350-400 yard targets. Must Qualify with Venue Chairman or specified Representative to Shoot at this Range
9. **Precision Shooting Range** – 100-800 yards, Must Qualify with Venue Chairman or specified Representative to Shoot at this Range
10. **Action Shooting Range / IDPA Pistol Competition** – 11 shooting bays

Action Shooting Range Rules

Numerous shooting sports are conducted at the Action Shooting Range. These include International Defensive Pistol Association (IDPA), Multigun, Rimfire, Ladies on Target/Shoot What You Carry matches, and other training events. These and similar sports use modern sporting rifles, pistols, and shotguns. This range is primarily a competition and training range, but members are free to shoot in the bays when they are not being used, or obviously set up in anticipation of or preparation for, a competition.

During Organized Matches:

1. The rules for each respective competitive discipline are to be followed and administered by the match organizers.
2. Only approved firearms, ammunition and gear may be used for each of the events. See event directors for the specific requirements of each.
3. MVSA is a "cold range" and no firearm may be loaded unless instructed by the Safety/Range Officer at the firing line. No concealed carry is permitted by participating competitors during scheduled matches on the Action Shooting Range.
4. All firearms must remain bagged, holstered, or have a visible empty chamber indicator (ECI) or flag in the gun action when not on the firing line, or be under the supervision of a Range/Safety Officer, or at a designated Safe Area. Safe Areas are designated by bright yellow paint on the legs and/or surface of a table, along with visible signage.
5. Firearms may be taken from their carry containers and holstered or worked on only at a designated Safe Area.
6. No ammunition may be handled in the Safe Area.
7. All contestants and visitors must wear safety glasses and hearing protection while in the bays where shooting is taking place. Using hearing and eye protection are always recommended anywhere at the Action Range.
8. All match contestants must sign the range waiver annually.
9. All match contestants must participate in target reset and match tear down.
10. All match contestants must follow the instructions of the Range/Safety Officer.
11. All disputes will be addressed by the Range Master or Match Director.
12. Guests are always welcome and may participate with the approval of the Range Master or Match Director.
13. Unless specifically designated as a "lost brass" match, all shooters are to be given the opportunity to retrieve their brass either during or after the match. MVSA members who did not participate in the match may retrieve and keep any brass left behind after a 24-hour grace period once the match has expired.

Non-Match Member Use:

1. Members who bring guests to the Action Shooting range may deposit their guest's waiver

in the marked metal box at the front of the pavilion.

2. Shooters using the bays during non-match hours are expected to bring their own targets.
3. Do not shoot the plastic barrels, props, portable barriers, portable walls, steel wall stands, cars, sandbags, concrete blocks, or other objects in or by the bays. These are not targets or target stands.
4. Targets are to be stapled between the upright sticks such that the normal aim of the shot does not strike the sticks, target stands, or other objects/props in the bay.
5. Target stands, sticks, barrels, tables, chairs, and props are to be returned to the covered pavilion in the bay, and neatly stacked or returned after use.
6. If a bay has target stands, props and other objects arranged in the bay, it is likely in preparation for an upcoming match. There will usually be a sign posted to this effect. Do not relocate or shoot at any of these items. Use another bay that is not set up instead.
7. Clean up after yourself. Haul your trash away or dispose of it in the provided trash cans. Used cardboard targets or backers should be placed in the Burn Bin between Bays 5 & 6.
8. If you make a mess in the bathroom or anywhere else, clean it up.
9. We do have cameras and we do identify offenders. You will be asked not to return if you misbehave.
10. Leave no spent shotgun hulls on the ground. They must be picked up and discarded in a trash can or hauled away.
11. Do not pick up brass within 24 hours of a competition or training event. The participants of these events may yet return to obtain their spent brass.

Woods Ranges & 400-Yard Rifle Range Rules

The Woods and 400-yard Ranges are open to MVSA members who have qualified to shoot at these areas. These are "restricted access" for those who want to shoot at a longer range than the existing Rifle Range, may be interested in competing in Sniper and/or Multigun matches, and are willing to qualify for an access key by going through a separate rules, safety, and shooting orientation process.

There are 4 Ranges: Ranges 1 and 2 are in the small ravines surrounded by woods. Ranges 3 and 4 are the large bay (the "Big Bay") and the adjacent 400-yard Range. This area is primarily a Competition and Training area. We have been conducting Multigun Matches here for several years now but it is developed enough to open it for provisional use by qualified members.

Access to this area is controlled by a locked gate at the entrance road just north of the Conex Storage Container near the Pistol Range. **The Board has decided that only approved shooters should be given keys to this area.**

Members will need to complete a special orientation and review process to gain access to the new ranges. Bring your rifle, ammo, eye and hearing protection and be prepared to shoot. You will receive an explanation of the Range Rules, proper use of these ranges, and be required to demonstrate safe gun handling and distance shooting skills. **If interested contact the 400-Yard Range and Woods Venue Chairman.**

Range Rules:

1. This area is defined as the area to the North and East of the 50 Yard Pistol Range to the property line.
2. There shall be an access gate at the entry road to this area. This is located just past the 40' Conex Storage container located across the parking lot from the 50-Yard Pistol & Smallbore Range.
3. This gate shall remain locked. Close and re-lock the gate behind you after entering and exiting. Also, there are chains or steel gates across the various roads that crisscross the area. These barriers should remain up or closed. If you notice that one is down or open, that may indicate that someone is down range, particularly if there is someone signed in, but not out. Use every precaution before shooting!
4. Access to and use of this area shall only be allowed to those MVSA members who have been issued a key, or to visiting competitors or participants in a training exercise or supervised competition.
5. **MVSA members must earn the right to be issued a key by demonstrating to the Venue Chair (or designee) that they are qualified to safely shoot out to 400 yards.** They will also be oriented in safe use and access of this area.
6. The qualifying member may bring guests per the MVSA Members Manual.

7. There shall be a sign-in and -out log at the gate. All users are required to sign in and out, except during a competition or training exercise at which time the area is closed for all other use and shall be so posted.
8. At present there are 4 established ranges in this area:
 - Range 1 - Near Woods – This is the first small ravine.
 - Range 2 - Far Woods – This is the second small ravine.
 - Range 3 - Big Bay – This is the large bay adjacent to the 400 YD Range.
 - Range 4 – 400-yard Range – This is located along the far edge of the property and has berms at multiple locations, up to about 400 yards.

Please Note the Following Safety & Range Usage Guidelines:

- COLD RANGE rules apply to this area, as they do to all other ranges. Firearms must be unloaded, actions open and/or flagged, and not handled whenever someone is downrange of the shooting position or benches.
- A Green/Red Sign shall be used to indicate that the range is in use at the Near Woods, Far Woods and 400-yard Range. Members using these ranges shall flip the Green side to Red upon arrival and back to Green upon leaving. The signs have instructions.
- When more than one shooter is present a Range Officer will be appointed.
- These ranges are used for various competitions and when set up for such use members are not to move or rearrange targets or props.
- No steel targets are to be engaged with rifles other than pistol-caliber carbines (PCCs) from distances closer than 50 yards.
- No Steel Core or penetrator bullets are to be used on any steel targets. Targets that are damaged by members are subject to penalty including replacement cost of the damaged target or possible revocation of MVSA membership.
- Any props or target stands that are used must be placed back where they were stored upon completion of their use. Do not leave any trash or old targets that you bring. That includes any spent shotgun hulls. The multigun targets may be left on the target stands and can be used if the range is not closed for a pending match.
- Shooters should expect to bring their own targets and cardboard backers.

Precision Rifle Shooting Range Rules

The proposed Precision Shooting Range at MVSA is currently being developed for those shooters who prefer to shoot long-range, larger caliber rifles at distances exceeding 400 yards.

The following pages are the 800 Yard Qualifications and Range Rules.

800 Yard Qualification

Phase 1: Preparation & Verification

1. Shooter Data Assessment

- Question each shooter on their ballistic data at random ranges.
- Ask how they determined their solutions.

2. Equipment Check

- Verify that each shooter has proper and functional equipment capable of accurately engaging targets at 800 yards.

Phase 2: Course of Fire

1. Target Engagement Standard

- Ensure each shooter can hit 2 MOA targets at each distance at least 2 out of 3 times.

2. Course Details

- 15-round total course of fire.
- Maintain strict range safety: ensure no rounds are sent over berms.

Notes:

- All shooters must complete Phase 1 requirements before attempting Phase 2.
- Range safety officers should monitor for compliance with both performance and safety standards.

Range Rules & Procedures

- Treat every firearm as if it was loaded and keep always pointed in a safe direction.
- If there are any issues with any Range or the complex, please contact the MVSA Long Range Venue Chair.
- Range hours are from 30 minutes after sunrise to Sunset
- All Federal, State, and Local firearm laws must be obeyed.
- No guests are allowed to be without an approved MVSA Long Range member.
- Approved guests require a liability form
- Use of chamber flags are required for all weapons that are not actively firing on the line. When transporting a firearm to the firing line, the firearm must have a chamber flag installed.
- Never walk or drive past any closed gates, cables, safety cones, or barricades
- There is absolutely no going down range past the 100-yard berm to hang or check paper targets. Members will not go to any of the other berms unless directly approved by the Long Range Venue Chair.
- When going down range use the "down range procedure" for the range you are on. This requires visual and verbal confirmation that all firearms are clear with chamber flag installed and other members are off the firing line. - - No handling of firearms or ammunition while members are down range. - - Once the range is determined to be secure, with no other people present down range only then may firing commence.
- Keep all vehicles on established roads. Do not park on any sodded grass near or beyond the firing line.
- MVSA is a "cold range". All firearms are to be kept in a safe and empty condition with a chamber flag installed until on the firing line.
- All members are required to wear eye and hearing protection.
- Shoot from authorized firing points only. Each target must have a backstop before engaging. Do not shoot into neighboring property. Shoot at approved targets only.

- Always adhere to the 2800 FPS rule. The 2800 FPS rule states that no bullet shall strike any steel target faster than 2800 feet per second. A good rule of thumb for this is do not exceed 3200 FPS at the muzzle.
- No shouldered cased rifle calibers larger than .30 caliber are allowed.
- No bipods with claw feet on shooting benches.
- 50 BMG and .338 caliber are prohibited, nothing larger than 30 caliber.
- Do not move targets from their hangers
- The range has target stands, but members must provide their own paper targets and cardboard backing.
- Shooting at rocks or any other inappropriate target that cause ricochets or may start a fire is prohibited
- Shooting any flammable or exploding material is prohibited; this includes Tannerite and any other similar binary compounds.
- Hunting and shooting at any wildlife is strictly prohibited everywhere on the MVSA Long Range.
- Tracer, incendiary, and armor piercing ammunitions are prohibited (this includes "green tips" or any other steel core bullets)
- Never shoot at MVSA property or structures. Any props or equipment which you might use, are to be used only for the purpose for which they were designed, including tables, chairs, benches, trash cans, equipment storage boxes and target holders.
- MVSA is a medical substance smoke free environment.
- Pick up your brass, you are allowed to take your own brass or deposit it in the blue bins. No steel, aluminum, or rimfire (.22) cases are allowed in the blue bin. Steel, aluminum, and rimfire cases go in the labeled bins.
- You are not allowed to take any brass out of the labeled bins.
- The shooter is the owner of their bullet from the time it leaves the barrel until wherever it lands. Please check your data/dope and keep barrels always pointed at the intended targets.
- Members are responsible for cleaning up after themselves and their guests. Deposit trash in the appropriate trash cans or pack it up and take it home. Keep your range clean! This includes brass, shells, and any or all casings.
- Absolutely no sales of firearms or ammunition are permitted on range property.
- See the long range qualification standards to become qualified for use of the range.
- Any member under the age of 18 years must be under the constant supervision of an adult member.
- The MVSA Long Range may be closed to members anytime we are running matches or training classes. Check the schedule on our website and contact us to de-conflict

- MVSA may refuse anyone the right to shoot and may order anyone to leave the range to enforce the range rules and preserve the safety of the range or the safety of its members. Repeat or gross offenders will be required to have a conversation with the Board of Directors and may have their membership revoked without a refund. It is our intent to provide a first rate, safe, semi-private facility for the serious marksmen.

I have read the MVSA LONG RANGE rules and procedures and by signing below acknowledge my understanding and affirmation to comply with and enforce declared policies. I further understand that if I fail to comply my membership could be revoked without a refund and without warning by the Board of Directors.

Date _____

Cowboy Action Range (Mountain Valley Vigilantes) Rules

Cowboy Action shooting is a multifaceted amateur shooting sport in which contestants compete with firearms typical of those used in the Old West: single action revolvers, lever action rifles, and side by side double barreled, pre-1899 pump or lever action shotguns.

Contestants shoot in several one to four-gun stages (courses of fire) in which they engage reactive steel targets. Scoring is based on accuracy and speed; contestants are required to wear western type clothing and adopt an alias. The Cowboy Action Shooting venue of MVSA is affiliated with the Single Action Shooting Society (SASS) and is governed by its rules and regulations.

Cowboy Action consists of shooting lead bullets at steel reactive targets, with all contestants in close proximity. To keep this sport safe and the damage to expensive targets at a minimum, the following general rules apply to the Cowboy Action Range. Consult the handbook at www.sassnet.com for all the rules.

1. Only single action revolvers may be used.
2. Only cast lead bullets may be used.
3. Only low velocity non-magnum (under 1000 fps) loads may be used.
4. No jacketed, semi-jacketed or gas check bullets may be used.
5. No rim-fire cartridges or rimless cartridges may be used (unless approved by the match director).
6. Close targets-only single action revolvers may be used.
7. Intermediate targets (swingers and knockdowns)-only shotguns with 7-1/2 or smaller shot may be used.
8. Distant targets-only pistol caliber lever action rifles may be used.
9. Only shoot from the designated firing line.
10. Only registered contestants may wear firearms. No concealed carry is permitted by participating competitors during scheduled matches on the Cowboy Action Range.
11. Contestants and guests must wear safety glasses and hearing protection.
12. During a registered match, non-contestants and guests must stay a minimum of 15 feet away from the firing line so there is no interference with the shooters.
13. Clean up after yourself. If you bring it in, take it out. Police all brass and shotgun hulls.

Rifle Range Rules

1. **This range is for all rifles, shotguns with slugs, and hunting handguns.** Fully automatic, simulated fully automatic, slide fire weapons, non-hunting handguns or shotguns with shot shells are **not allowed**. Also, .50 Cal BMG, tracer, armor piercing, or steel core ammunition is **not allowed**.
2. **Non-members must sign a waiver and deposit it in the waiver container by the flagpole.** A blank waiver form is in the PVC waiver container; in the back of this manual; and on the website for you to download and print for your guests. This must be done annually. Members that bring guests are responsible for making sure their guests fill out the annual waiver. **Guest donations of \$5.00/guest would be appreciated to maintain target stands and help defer range maintenance.** Deposit Guest donations in the yellow box by the flag.
3. Fire from the proper bench position for the distance; position 1-3 are 300-yard benches, 4-6 are 200-yard benches, 7-10 are 100-yard benches, and 11-12 are for 25-50-100 sight-in positions. Do not set targets closer than 25 yards because of potential ricochets. (Use the Action Shooting Range bays for close range rifle shooting.) **DO NOT shoot across lanes.**
4. Raise the red Range Flag when the range is in use.
5. When more than one shooter is on the firing line, a Range Officer is to be appointed by the shooters present. When people are downrange of the firing line, there is **absolutely NO handling or manipulation of firearms**. All firearms must be in a COLD condition as indicated in rule #8, below.
6. Safety glasses and hearing protection must be worn by everyone on the rifle range.
7. All rounds fired **MUST** impact the berm (or steel plates near the berm). There will be no shooting at objects on the ground, as it can result in ricochets that leave the range.
8. All firing must be done from the firing line; no firing from down-range positions. (An exception may be made to this rule for supervised, scheduled competitions when all participants are in the same downrange position.) When on the firing line, muzzles must always be pointed down range, and all guns must be unloaded and the action open, preferably with an ECI (empty chamber indicator) flag inserted, unless shooting. Break open guns may be closed when the gun is in the gun/rifle rack.
9. Shoot only at targets that you brought to the range.
10. Clean up when done, pick/sweep up your brass or steel from the concrete area and dispose of it in the provided buckets or take it home.

11. If you bring it to the range, take it home with you. Pick up your trash, remove your targets, and dispose of them properly.

12. **Range Courtesy.** Foul language, small unmanaged children, loud music, or other things that tend to be distractions and safety hazards to other shooters **are not allowed**. Be safe and courteous to other shooters when at the range.

Pistol Range and Rimfire Rifle Range Rules

This range is for pistols and some small-bore rifles. No shotguns or shot shells allowed. See pg. 22 for all the types of firearms allowed on these ranges.

Pistol Range: Pistol-caliber firearms only on this range. No bottleneck centerfire cartridges may be used, except .357 Sig caliber. No centerfire cartridges developed primarily as rifle cartridges may be used. If you have doubt whether a particular cartridge is authorized, don't shoot it on this range.

Rimfire Rifle Range: Only .22 rimfire cartridges—Long Rifle, Long, and Short—may be used on this range. **NO .17 WSM, .17 HMR, and .22 Magnum rimfire cartridges are allowed.** These are high-powered rounds and will damage the Rimfire Rifle Range targets. Such cartridges can be fired at the “regular” Rifle Range.

Non-members must sign a waiver and deposit it in the PVC waiver container by the flagpole at the pistol range. A blank waiver form is in the waiver container at the range; in the back of this manual; and on the website to download and print, for your guests. This must be done annually. Members that bring guests are responsible for making sure their guests fill out an annual waiver. **Guest donations of \$5.00/guest would be appreciated to maintain target stands and help defer range maintenance.** Deposit Guest donations in the yellow box by the flag at the Rifle Range.

1. Raise the red Range Flag when the range is in use. Lower it and return the flag to the PVC flag container if you are the last to leave.
2. When more than one shooter is on the firing line, a Range Officer is to be appointed. When people are downrange of the firing line, there is **absolutely NO handling or manipulation of firearms**. All firearms must be in a COLD condition as indicated in rule #5, below. This rule applies to the simultaneous use of the Rimfire Rifle and Pistol Ranges; when someone is downrange and the range is COLD, both ranges are COLD.
3. Safety glasses and hearing protection must be worn by everyone on the pistol range.
4. All rounds **MUST** impact the berm or steel plates. There will be no shooting at objects on the ground, as this can result in ricochets.
5. All firing must be done from the firing line; no firing from down range positions. When on the firing line, muzzles must always be pointed down range, and all guns must be unloaded, magazines removed and/or cylinders emptied, and the actions open unless shooting. Break-open guns may be closed when the gun is in the gun rack at the smallbore range.
6. Shoot only at targets that you brought to the range, or at the steel reactive targets on the range. No shooting at objects on the ground, as this can cause ricochets that leave the range and may pose a danger to others off MVSA property.

7. Clean up when you are done, pick/sweep up your brass or steel from the concrete area and dispose of it in the provided buckets or take it home. Place used paper targets and trash in the trash can. Cardboard targets and/or backers can be placed in a pile beside the Pistol Range; please place something heavy on the pile to weigh it down.

8. **Range Courtesy.** Foul language, small unmanaged children, loud music or other things that tend to be distractions and safety hazards to other shooters **are not allowed**. Be safe and courteous to other shooters when at the range.



Guns Allowed on Pistol & Rimfire Rifle Ranges

Pistol Range:

- **Pistols:** All traditional revolvers and semi-auto straight walled caliber plus .357 Sig with cartridge overall length 1.6” or less
- **Pistol Caliber Carbines & AR style pistols:** **Only** in 9MM, 10MM, 40 S&W, and 45ACP

Rimfire Rifle Range:

- **Rifles:** 22 Short, 22 Long, and 22 Long Rifle only. Higher powered rimfire cartridges (such as 22 Mag, 17 HMR) are not allowed.

Guns not allowed at either Pistol or Rimfire Range:

- **Hunting Pistols:** any caliber
- **AR-style pistols:** any caliber not shown above (such as .223/556 NATO)
- **Rifles:** any caliber not shown above
- **Shotguns:** not allowed in any caliber (including .410 Judge pistols)

****Violation of rules may result in permanent loss of membership****

MVSA Member Manual

Skeet and Trap Range Rules

1. Safety glasses and hearing protection must always be worn.
2. Always keep your gun pointed down range.
3. Spectators should remain on, or behind, the walkway that separates the fields from the pavilions and clubhouse. Range officers, coaches, and scorekeepers may stand, or sit, behind shooters as part of their duties.
4. All shotguns will be empty and their actions open while changing stations.
5. Never load your gun until you are on station.
6. Never load more than two rounds at a time.
7. The maximum shot size allowed is 7-1/2 bird shot.
8. The maximum load is 3-1/2 dram equivalent.
9. Loud and abusive language will not be permitted.
10. Shotgun patterning should be done on the steel patterning board to the right of the skeet and trap fields. This is a grease-coated pattern board and no paper or cardboard is needed. Use the paint roller to smooth out the grease between shots. Each pellet will make a small dimple in the grease to indicate your pattern. Use only lead shot shells that are permitted in these skeet and trap range rules when shooting the pattern board.
11. Pick up all shotgun hulls after each round of shooting and place them in the provided receptacles. Hulls left on the ground tear up the mowers.
12. A self-service clay target thrower is located on field 3. You must supply your own targets for this machine. The Skeet and Trap Venue Chairman can provide instruction on how to operate this machine.
13. The calendar on the MVSA website is the best way to know when the skeet and trap range will be open. The clubhouse and regulation trap/skeet fields are only available to members and guests when an approved opener (range safety officer) is present to operate the range and collect target fees from the participants.
14. No shooting of skeet targets (high house and low house) is permitted during Cowboy Action matches.
15. The self-service machine and pattern board should not be used while the regulation trap/skeet fields are in use or when field maintenance is underway.

MVSA Member Manual

MVSA Website & Communications

Mountain Valley Sportsman's Association strives to provide its members with timely, relevant information about club events, new developments, policy updates, and other matters of interest. There are two primary vehicles for communicating such information:

1. Email communications to members by club administration, the various shooting venues, and regarding upcoming competitive events.
2. MVSA's website, MVSAOnline: <https://mvsaonline.com/>

Mailings/eMail Communications

On rare occasions, mailings via the US Postal Service will be made, but these are both expensive and time-consuming. MVSA's Board of Directors strongly encourages all members to maintain and use an active email account, and to watch for club communications from its Board and Officers, and its shooting venues.

Since most MVSA membership mailings are generated through a commercial email platform, it is common for larger email clients (Gmail, Yahoo, Outlook, AOL, etc.) to "flag" mailings from such commercial mail engines as SPAM or JUNK mail. If you are not receiving periodic mailings or notices from MVSA please check your email client's Junk or Spam folders for these communications and mark them as "Not Spam" or "Not Junk" so that future mailings end up in your regular email Inbox. If you elect to "Unsubscribe" from MVSA's periodic mailings, you will not receive ANY email notices or reminders (such as membership renewal reminders).

Website: MVSAOnline.com

A convenient and constantly updated source of information is **MVSAOnline.com**. Accessible from any personal computer or internet-capable mobile device, MVSAOnline.com includes general information for members and guests, including:

- Membership information, including links to apply for new memberships and to renew existing annual memberships;
- Downloadable copies of Guest Waivers and the Member Manual;
- Venue-specific descriptions, facilities, news, photos, and contact information;
- New developments and current news in the **What's New** section;
- Member notices and shooting industry news in the **Bullet-In** section;
- **Classes & Services** offered by MVSA members and partners, including Concealed Carry license classes;

MVSA Member Manual

- **Lost & Found** and **For Sale** sections where members can list shooting-related items, including guns, ammo, and reloading supplies;
- Contact information for venue leaders, club officers, and board members; and
- Gate Key replacement requests can be made via the website.

Welcome to MVSA's Member Website: MVSAOnline.com



Navigation around the site is easy: Scroll down each page for lots of useful information: Coming events; obtaining, or renewing, your concealed carry license; bulletins from the club & venues; What's New; and getting a replacement gate key card. And more: How to join MVSA and renew your membership; a Calendar of Events that's kept up to date for all venues and activities; information about each of the shooting venues and types of competitions at MVSA. Click on the menu selections such as More for additional information on club contacts and administration, Lost & Found, For Sale items, and Classes & Services offered!

MVSA Member Manual

MVSA Website Event Calendar

MVSA EVENTS									
Today	November 2023					Print	Week	Month	Agenda
Sun	Mon	Tue	Wed	Thu	Fri	Sat			
29 1pm Trap & Skeet	30 7am School Security Training 7:30am Balboa Baptist Church	31 Halloween 7am School Security Training 9am Trap and Skeet	Nov 1 First Day of American Indian 7am School Security Training	2 7am School Security Training 5pm Trap&Skeet Practice	3 7:30am Balboa Baptist Church	4 (BIG50) 9AM Trap Tournament 9am IDPA Club Match 9:30am Cowboy Action Shoot 12:30pm CHCL Class - Bay 4			
5 Daylight Saving Time ends 9am Multi-Gun "Safari" Match 1pm Trap & Skeet	6 9am Rifle/Pistol Ranges Closed	7 Election Day 10am Trap and Skeet	8 7:30am Balboa Baptist Church 8:30am RIFLE RANGE reserv	9 5pm Trap&Skeet Practice 6:30pm Shotgun Clubhouse	10 Veterans Day (substitute) 8am Basic & Enhanced CHCL	11 Veterans Day Trap fields for Crossgate Club 8am Military Rifle Match			
12 12pm Balboa Baptist Church 12pm PineyGrove Sheepdog 1pm Trap & Skeet 3pm New Member Orientation	13	14 10am Trap and Skeet	15 8am Balboa Baptist Church	16 6am GCSO TRTVtryout 5pm Trap&Skeet Practice	17 8am Basic & Enhanced CHCL 8am Balboa Baptist Church	18 8am Lake Valley Church Training 9am Women's Only Beginner 9am Rimfire Steel Match 12pm A Girl & A Gun, Hot Sp			
19 1pm Trap & Skeet 3:30pm Magnet Cove Trap Te	20 9am Rifle/Pistol Ranges Closed	21 10am Trap and Skeet	22 Action Bays 5,6,7,8,9,10 C	23 Thanksgiving Day Action Bays 5,6,7,8,9,10 C	24 Native American Heritage Day Action Bays 5,6,7,8,9,10 C	25 9am IDPA Club Match			
26 1pm Trap & Skeet	27	28 10am Trap and Skeet	29 7:30am Cleaning:clubhouses	30 5pm Trap&Skeet Practice	Dec 1 7:30am CMS school training	2 8am Basic CHCL Course 9:30am Cowboy Action Shoot 12:30pm CHCL Class - Bay 4			

MVSA Member Manual

Membership and Renewals

New Members

All applicants for membership are required to submit a New Member application, either online (<https://mvsaonline.com/>) or via hard copy application. All required fees must be submitted at the time of application. New member applications are reviewed monthly by the Board of Directors and approved or declined by a majority vote of the Board. **Membership in the National Rifle Association (NRA) is required to join MVSA.**

The membership period is January 1 through December 31 each year. New memberships require a one-time initiation fee of \$120 and annual membership dues of \$150, both subject to Garland County sales tax of 8%. Gate key cards require an additional non-refundable deposit of \$20 + sales tax.

Annual dues are prorated during the year at \$37.50/quarter depending on when you join. This prorate option is available only during the first year of membership; it does not apply to membership renewals.

New members are provisional until attending and completing the required new member orientation meeting, and signing a Liability Waiver, after which they will receive their gate key card and become full members of the association.

Annual Renewals

Annual membership renewal payments, accompanied by a completed renewal application form to update member information, are due no later than December 31 for the following calendar year. Renewal dues are \$150/year, payable annually, by credit/debit card (online) or by check (hard copy application).

A “grace period” for late payments is available during the month of January of the renewal year. A late fee of \$25 will apply, in addition to renewal dues, for payments made during this grace period. Any membership not renewed before February 1 of the membership year will be terminated effective February 1, with no exceptions. In such cases membership can only be re-instituted by reapplying as a new member, subject to new member charges including the initiation and gate card fees.

New and Renewal applications can be initiated on the MVSAOnline website’s Membership section. Renewal applications and payments can be made during the period of October 1 through December 31, and during the grace period of January 1-31 subject to additional payment of the late fee.

MVSA Member Manual

Smoke N' Chips Clay Shooting Park

Hello MVSA member!

There is a new shooting venue in the Hot Springs area called **Smoke N' Chips Clay Shooting Park** and it's located right across the street from MVSA.

Sporting Clays is a challenging shotgun sport that also offers a great social aspect, much like golf. The sport involves shooting at targets that can be thrown from any angle, distance, and speed, using six different sizes and shapes of clays. There are even rolling clay targets, also known as "Rabbits", which randomly hop when they come into contact with pebbles and branches. If you're not familiar with the sport, it's like a game of golf but with a shotgun.

We will be opening soon, as a fully functional Sporting Clays course that will have 12 stations, with each station having 3 clay throwers. By 2025, we aim to have 16 stations, each with 4 clay throwers. We plan to organize monthly tournaments for both beginners and experienced NSCA shooters. So, we invite you to join us for practice or even some friendly competitive shotgunning.

We are thrilled to offer a special discount to all MVSA members. This offer includes a FREE one-month membership to our club. Once the free month is over, you can become a member of Smoke N' Chips and enjoy waived startup fees and a special monthly discount on any of our three membership packages. Additionally, you'll have access to various perks that will help you save money on daily practice and other amenities.

If you prefer not to join our club, you're still welcome to shoot with us at a discounted MVSA-only public rate.

We are looking forward to welcoming you for our soft opening, scheduled for early 2024.

Thank you,

Cory Moore & Dana Moore

smokenchips.com

facebook.com/smokenchips

Instagram.com/smoke_n_chips

MVSA Member Manual

MVSA BYLAWS

Revised and approved by membership April 2021.

ARTICLE I -NAME

The name of this organization shall be the Mountain Valley Sportsman's Association, Inc.

ARTICLE II -MISSION STATEMENT

Section 1. The mission of this organization shall be the encouragement of sport shooting among the citizens of the UNITED STATES who are resident in our community. With a view toward a better knowledge on the part of the safe handling and proper care of firearms, as well as improved marksmanship. It shall be our further mission and purpose to encourage the development of those characteristics of honesty, good fellowship, self-discipline, team play and self-reliance which are the essentials of good sportsmanship, and the foundation of true patriotism.

ARTICLE III -TYPES OF MEMBERSHIP

Section 1. There shall be four types of membership: Charter Membership, Life Membership, Active Membership and Corporate Membership. Charter membership will be limited to one hundred members. Assets of the Mountain Valley Sportsman's Association, Inc. will be vested in the Charter Memberships. Should this organization dissolve for any reason, assets will be sold, and the proceeds divided equally among the Charter Memberships in good standing.

Section 2. A charter membership will make the initial fee payment as set by the Board of Directors and remain an active member in good standing. Failure to maintain annual dues will result in forfeiture of the Charter Membership fee and rights. Charter membership ends with the death of the holder.

Section 3. Life Membership will qualify by payment of a onetime fee set by the Board of Directors and will not be subject to further yearly dues payments. Life memberships terminate with the death of the member. The number of available Life Memberships shall be limited to not more than ten percent of the current membership. In the event of more Life Membership applications than are currently available then a wait list shall be maintained by the Secretary and offered as they become available to those who have been on the wait list longest first.

Section 4. Active Membership will qualify by paying the initiation fee and/or yearly dues as set by the Board of Directors. Active Membership is for one year from 1/1/xx to 12/31/xx and can be prorated for the initial year of membership. Active membership includes members of the immediate family, but only the registered member may vote. Immediate family is defined by marriage, and dependent children under the age of 21.

Section 5. A Corporate Membership allows a corporation, for a fee to be determined by the Board of Directors, to have up to five employees become active shooters at the Mountain Valley Sportsman's Association, Inc. (Additional employees may be added for a one-time fee to be determined by the Board of Directors.) These employees will enjoy the same privileges as other members of the Mountain Valley Sportsman's Association, Inc. with the exception of voting at the association membership meetings. One vote will be allowed to a corporate designated employee. One designated employee will be allowed to purchase a

MVSA Member Manual

MVSA Bylaws (continued)

non-transferable Charter Membership in his or her name at the time the Corporate Membership is granted. Those employees listed on a Corporate Membership can be changed by the corporation by notifying the Mountain Valley Sportsman's Association, Inc. of desired changes. An employee once removed from the membership may not be re-designated a shooter for a period of six months. Each member will be furnished a gate key and membership card. The cost of all memberships in Mountain Valley Sportsman's Association, Inc. will be determined by the Board of Directors.

ARTICLE IV -ELIGIBILITY and RESPONSIBILITY

Section 1. Any citizen of the United States who is legally entitled to own a firearm and, while this person remains of good repute, who subscribes to the objectives and purposes of the Association shall be eligible to be a member of the Association. The minimum age of eligibility is eighteen years of age. All those seeking membership must complete an application and be approved for membership by affirmative vote of the Board of Directors. All prospective members must subscribe to the following oath and submit payment of current initiation fee and/or dues, plus each member must be an ongoing member of the National Rifle Association.

Section 2. Any member, in the estimation of the Board of Directors, who ceases to remain in a state of good repute and/or is convicted of a felony may have his/her MVSA membership terminated by a majority vote of the Board of Directors. The Board of Directors may also decide, by majority vote, whether to return all or part of said member's MVSA dues that have been paid.

Section 3. All members will be required to participate in work activities for a Board specified number of hours per year or pay a Board specified fee in lieu of the hours.

Section 4. No individual who is a member of any organization or group having as its purpose, or one of its purposes, the overthrow by force and violence of the Government of the United States or its political subdivisions, shall be eligible for membership.

ARTICLE V - OATH OF ALLEGIANCE

I pledge allegiance to the flag of the United States of America and to the Republic for which it stands. I certify that I am not a member of any organization or group pledged to, or working for, a program aimed at the destruction of our present system of government established by the Constitution of the United States.

ARTICLE VI -BENEFITS AND DUES

Section 1. All members in good standing shall have the privilege of using the facilities of the club under the regulations and directives issued by the Board of Directors.

Section 2. Active members in good standing shall have the privilege of a voice and a ballot in all matters pertaining to the activities and welfare of the club except such matters of administration as are delegated by these Bylaws or subsequently by proper action of the membership to the Executive committee, Board of Directors, special committee, or officers of the club.

Section 3. No member shall be considered to be in good standing who is in arrears in the payment of dues or who has been suspended from the privileges of membership by proper action of the Board of Directors. Any individual's membership may be revoked by a majority vote of the Board for actions it deems inappropriate or unsafe.

MVSA Member Manual

MVSA Bylaws (continued)

Section 4. The duties of all members shall be to conduct themselves at all times in a manner becoming to true sportsmen and good citizens, to observe the rules and regulations of the club pertaining to competition and safety, to assist the officers of the club in maintaining proper order, discipline, safe conduct, and fair play, and to report promptly to the club officers any infractions of rules by club members or visitors that may result in danger to the person, property, or good repute of members of the club. All members will be required to participate in work activities for a Board specified number of hours per year or pay a Board specified fee in lieu of the hours.

Section 5. An appropriate card shall be issued to each new member as evidence of membership. An applicant for any class of membership or affiliation may be refused admission or affiliation by the Board of Directors for any reason deemed by it to be sufficient.

Section 6. MVSA and the Board of Directors may conduct business by mail – standard or electronic.

ARTICLE VII -DUES

Section 1. The annual dues shall be payable no later than January 1st each year, and shall be considered in arrears the following February 1st, resulting in the cancellation of that membership. The board shall have the discretion to review cancelled memberships on a case by case basis.

Section 2. The annual dues for members shall be established by the Board of Directors. Life Members shall not be assessed annual dues.

Section 3. Life Membership: Any member in good standing may apply for Life Membership.

Section 4. Membership fee for Life Membership shall be established by action of the Board of Directors. Applications for Life Membership may not be approved any time the total number of life members exceeds ten percent of current memberships.

Section 5. The Board of Directors may waive dues renewal for active duty military members. This is especially to be applied when such members are on orders and unable to use the range.

ARTICLE VIII -CLUB MEETING

Section 1. ANNUAL MEETING --The Annual Meeting of the organization will be held the 3rd Thursday of April of each year. Notices are to be issued a minimum of fifteen days prior to the meeting.

Section 2. REGULAR MEETINGS --At least two regular meetings of the organization for the transaction of ordinary business shall be held each year at a date, time and place selected by the Board of Directors. Notice shall be given to all members 15 days in advance.

Section 3. SPECIAL MEETINGS --A special meeting of the organization may be held at any time upon the call of the President, or upon the call of the Board of Directors, or upon demand in writing stating the object of the proposed meeting and signed by not less than twenty-five percent (25%) of the active members in good standing. Notice of the time, place, and object of any special meeting shall be given all officers and members in good standing not less than seven (7) days prior to the date fixed by the Board of Directors or by the President if the Board of Directors is unable or fails to act.

MVSA Member Manual

MVSA Bylaws (continued)

ARTICLE IX –OFFICERS

Section 1. BOARD OF DIRECTORS -A Board of Directors shall consist of no less than eight (8) but no more than thirteen (13) members. The current serving President shall be an Ex-Officio member of the Board of Directors. All members must be active members of the Mountain Valley Sportsman's Association, Inc., and shall be elected by a majority vote of the members. The term of office of the Directors shall be three (3) years. The terms of office are staggered and one-third (1/3) of the members' terms expire each year. The Board shall meet in special session after the annual meeting and select one member of the board to serve as Chairman. His term shall be one (1) year, or until a successor is named. The Directors shall take office on the first day of May and shall serve for three (3) years or until their successors are selected.

Section 2. The Board of Directors has general charge of the affairs and property of the Association. In annual or special meetings, the Board of Directors formulates and establishes the broad policies and programs under which the association operates.

Section 3. Meetings of the Board of Directors shall be held not less than once during each calendar year at such time and place as the Board may determine. Special meetings may be held at any time on call of the Chairman or on demand of at least five (5) members of the board in advance stating the time, place and purpose of the special meeting.

Section 4. Sixty Percent of the members of the Board of Directors shall constitute a quorum.

Section 5. A vacancy on the Board of Directors shall be filled by a majority vote of the remaining Board of Directors in a special called or regular meeting.

Section 6. OFFICERS -The Officers shall be the President, Vice President, Secretary, and Treasurer of the Association. They shall be elected by a majority vote by ballot of the active members in good standing. Nomination of officers must be approved by the Board. The Officers shall take office on the first day of May and shall serve for one (1) year or until their successors are selected. The Officers shall be part of the Board of Directors for a one (1) year term.

Section 7. The vacancy of an elected officer shall be filled by the Board of Directors in a special or regular called board meeting and shall serve the remaining term of that position.

ARTICLE X -DUTIES OF OFFICERS

Section 1. PRESIDENT -The President shall preside at all meetings of the Association and of the Executive Committee. The President shall be a member ex-officio of all regular and special committees except the nominating committee and shall perform all such other duties as usually pertain to his office. The President shall be part of the Board of Directors.

Section 2. VICE PRESIDENT -The Vice President shall perform the duties of the President in the absence or at the request of the President. The Vice President shall perform such tasks as directed by the President and Board of Directors. The Vice President shall be part of the Board of Directors.

Section 3. SECRETARY -The Secretary shall conduct all official correspondence pertaining to the proper preparation and forwarding of all reports required of the office. The Secretary shall notify the members of the Board of Directors of all meetings and shall notify all members of the organization of the regular, annual, and special meetings as required in Article VII. The Secretary shall keep a true record of all

MVSA Member Manual

MVSA Bylaws (continued)

meetings of the Board of Directors except the Treasurer's book of account. All applications for membership in the Association shall be made to the Secretary. The Secretary shall be responsible for the collection of all fees and shall remit the same to the Treasurer, given his proper receipt therefore. The Secretary shall be part of the Board of Directors.

Section 4. TREASURER -The Treasurer shall have charge of all funds of the organization and shall place the same in such bank or banks as may be approved by the Board of Directors. Such money shall be withdrawn only by the Treasurer, or in his/her absence by the President or such person as the Board of Directors may designate, and for the payment of such bills as shall have been approved by the Board of Directors.

The Secretary shall deliver to the Treasurer a receipt for all such checks including a list of the names of members for whom dues are being paid and dates covered by the membership fee. The Treasurer shall keep an accurate account of all his transactions and shall render a detailed report with vouchers at any meeting of the Board of Directors when requested and an annual report to the club at its annual meeting. The Treasurer shall be part of the Board of Directors.

ARTICLE XI -AMENDMENTS

Section 1. Any proposed amendments to the Bylaws may be introduced by any member of the Association at any regular meeting or special meeting called for the purpose. After approval by the association membership at a regular or special meeting called for the purpose, provided that a copy of the proposed amendment(s) has been sent to each association member at least fifteen (15) days prior to the meeting, a two-thirds (2/3) vote of the members in good standing present at such meeting shall be necessary to pass said amendment(s).

ARTICLE XI -RULES OF ORDER

Section 1. Proceedings of this association shall be governed by and conducted in accordance with Robert's Rules of Order, revised, except as otherwise provided.

Section 2. The Association may, at its general meetings, adopt any order of business the meeting may desire.

MVSA Member Manual

This page is intentionally left Blank.

MVSA Member Manual

MVSA GUEST WAIVER and RELEASE AGREEMENT

Sponsoring Member Name (please print legibly): _____
Please read carefully & print legibly before signing; this is a release of liability and waiver of certain legal rights.

Guest Name (Print Legibly): _____ Address: _____
City, State, Zip: _____ Phone Number: (H) _____ (C) _____

In consideration for my being permitted to participate in the activities of Mountain Valley Sportsman's Association, hereafter known as MVSA, I agree to the following Waiver and Release:

I acknowledge that MVSA has inherent risks, hazards, and dangers for anyone that cannot be eliminated, particularly in a wilderness environment. **I UNDERSTAND THAT THESE RISKS, HAZARDS, AND DANGERS INCLUDE WITHOUT LIMITATION:**

1. The risk of handling firearms and being near others that have firearms in their possession;
2. The risk of injury from ammunition and shot from other guns;
3. The risk of exposure to hazardous materials, including, but not limited to, lead and mercury and other hazardous materials that may be present and inherent with the firing of ammunition;
4. Walking in rugged country, including encounters with wildlife, animals and insects;
5. Inclement weather conditions;
6. The risk of injury from riding on an all-terrain vehicle (ATV) or any vehicle used off the paved road;
7. The risk of injury from the use of props, structures, clay throwers and any other edifice in use at MVSA.

I understand the risks, hazards, and dangers of shooting and have had the opportunity to discuss them with MVSA members and/or officers. I understand that these activities may require good physical conditioning and a degree of skill and knowledge. I believe I have that good physical conditioning and the degree of skill and knowledge necessary for me to engage in these activities safely. I understand that I have responsibilities. **My participation in this activity is purely voluntary.** No one is forcing me to participate and I elect to participate in spite of the risks. **I AM VOLUNTARILY USING THE SERVICES OF MVSA WITH FULL KNOWLEDGE OF THE INHERENT RISKS, HAZARDS, AND DANGERS INVOLVED AND HEREBY ASSUME AND ACCEPT ANY AND ALL RISKS OF INJURY, PARALYSIS, OR DEATH.**

Lastly, I, for myself, my heirs, successors, executors, and subrogates, hereby KNOWINGLY AND INTENTIONALLY WAIVE AND RELEASE, INDEMNIFY AND HOLD HARMLESS MVSA their directors, officers, agents, employees, and volunteers from and against any and all claims, actions, causes of action, liabilities, suits, expenses (including reasonable attorneys' fees) which are related to, arise out of, or are in any way connected with my participation in this activity including, but not limited to, NEGLIGENCE of any kind or nature, whether foreseen or unforeseen, arising directly or indirectly out of any damage, loss, injury, paralysis, or death to me or my property as a result of my engaging in these activities or the use of these services, animals or equipment, whether such damage, loss, injury, paralysis, or death results from negligence of MVSA or from some other cause. I, for myself, my heirs, my successors, executors, and subrogates, further agree not to sue MVSA as a result of any injury, paralysis, or death suffered in connection with my use and participation in the activities of MVSA.

I HAVE CAREFULLY READ, CLEARLY UNDERSTAND, AND VOLUNTARILY SIGN THIS WAIVER AND RELEASE AGREEMENT.

Date: _____ Guest Signature: _____

If less than eighteen years of age, parent, guardian, or custodian must sign the following INDEMNIFICATION:

In consideration for the above minor being permitted by MVSA to participate in the activities of MVSA which include, without limitation, the use of its services and equipment, I agree to the following waiver, release, and indemnification:

The undersigned parent, guardian, or custodian of the above minor, for himself herself and on behalf of said minor, hereby joins in the foregoing Waiver and Release and hereby stipulates and agrees to save and hold harmless, indemnify, and forever defend, MVSA their directors, officers, agents, employees, and volunteers from and against any claims, actions, demands, expenses, liabilities (including reasonable attorneys' fees), and NEGLIGENCE made or bought by said minor or by anyone on behalf of said minor, further agree not to sue MVSA as a result of any injury, paralysis or death that said minor suffers in connection with his/her participation in the activities of MVSA.

Name of Minor(s) (Print Legibly) _____

Parent/Guardian/Custodian Signature: _____ Date: _____

Witness Name (Print): _____ Witness Signature: _____