



ZOÉ M^CCLOSKEY LÓPEZ



















































ecstatic shock - fall 2017



eve - eccentric -
sensual - confident
- provocative -
empowered

silk duchesse satin -
wool felt - cowhide
leather - chantilly
lace - silk organza -
rayon velvet - wool
twill - china silk
habotai - nickel plated
hardware



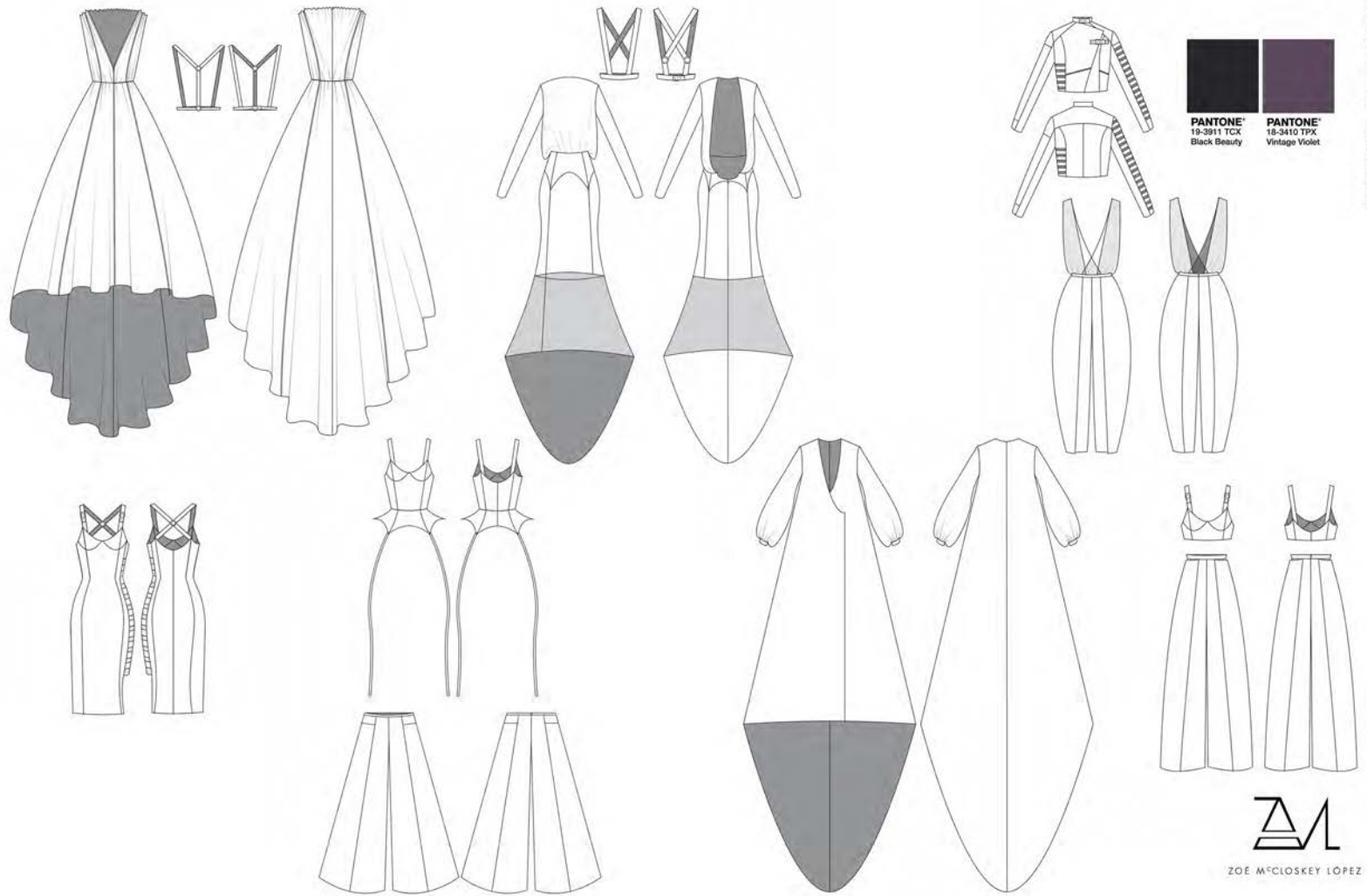




PANTONE®
19-3911 TCX
Black Beauty

PANTONE®
18-3410 TPX
Vintage Violet





PANTONE 18-3911 TCX
Black Beauty

PANTONE 18-3410 TPX
Vintage Violet

ZML
ZOE M'GLOSKEY LOPEZ



photographer: Audrey Rouzer - hair: Brittany Whybrew - makeup: Anna Makar - models: Rachel Andert & Jordan Meeler





photographer: Audrey Rouzer - hair: Brittany Whybrew - makeup: Anna Makar - models: Rachel Andert & Jordan Meeler





photographer: Audrey Rouzer - hair: Brittany Whybrew - makeup: Anna Makar - models: Rachel Andert & Jordan Meeler





photographer: Audrey Rouzer - hair: Brittany Whybrew - makeup: Anna Makar - models: Rachel Andert & Jordan Meeler



liaison - fall 2017



silk duchesse satin - wool
felt - cowhide leather -
china silk habotai



brigitte - effortless -
sensual - confident -
alluring





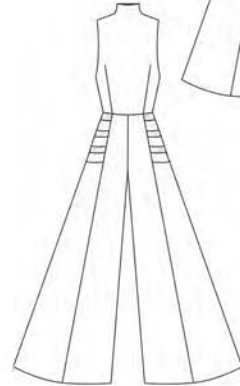
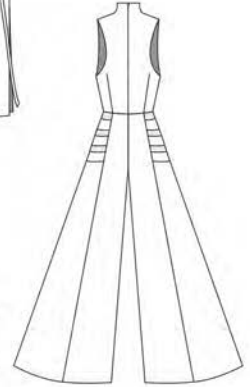
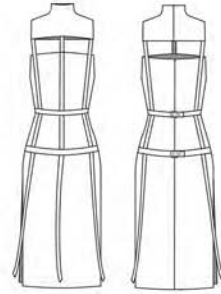
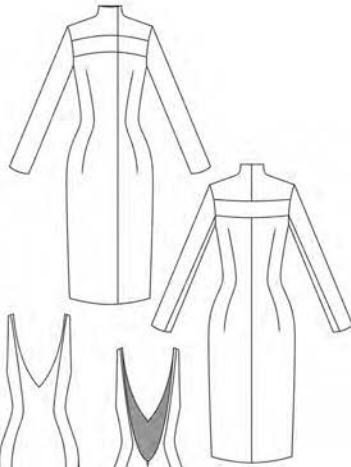
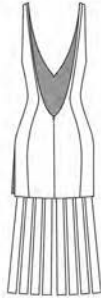
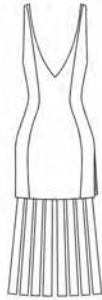
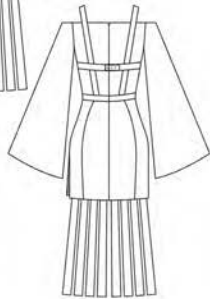
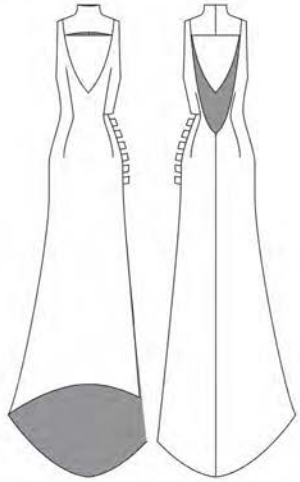
PANTONE
19-1627 TCX
Port Royale





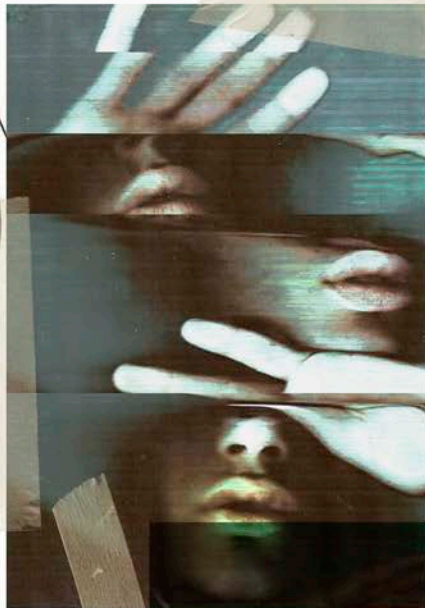
PANTONE
19-1627 TCX
Port Royale





PANTONE
19-1627 TCX
Port Royale





(n.)the inexplicable urge to push people away, even close friends who you really like - as if all your social taste buds suddenly went numb, leaving you unable to distinguish cheap politeness from the taste of genuine affection, unable to recognize its rich and ambiguous flavors, its long and delicate maturation, or the simple fact that each

amber -
eccentric -
emotional -
confident -
conflicted



camel leather -
sand suede -
pattern linen -
teal suede -
blush leather -
mauve felt -
blush tweed



ZOE M'GLOSKEY LOPEZ





silk organza - satin faced silk organza - faux suede - crinkled silk - inspired by the movement of water and how water's surface tension plays with the human body - photographer: Audrey Rouzer - model: Anna Makar - hair/makeup: Zoé McCloskey-López





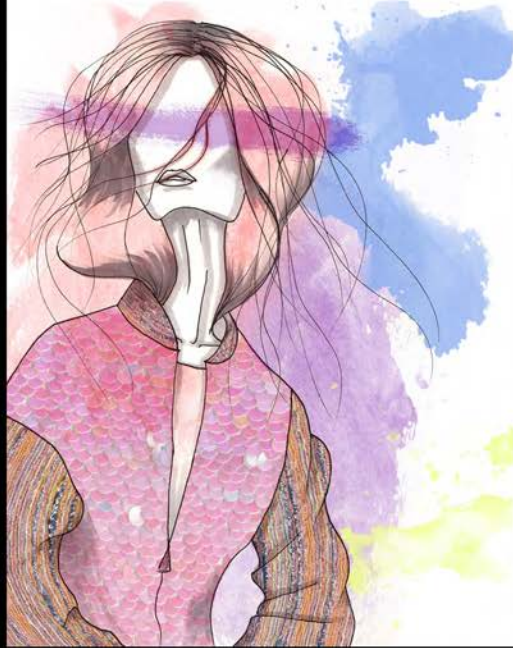
mix of wool plaids in varying weights and colors - inspired by human complexity and playfulness - photographer: Audrey Rouzer - model: Anna Makar - hair/makeup: Zoé McCloskey-López













ZOÉ MCCLOSKEY LÓPEZ