



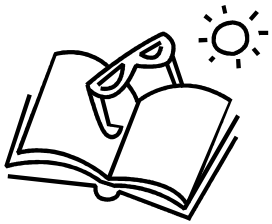
Essex-Stembridge Recreation & Parks Council



Camp Greentree

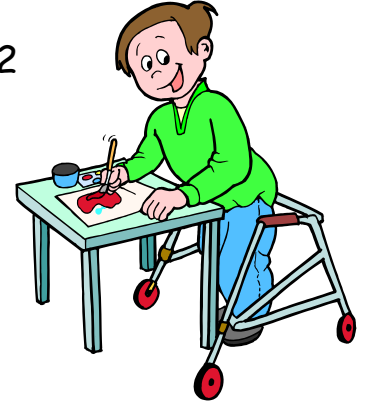
Camp Greentree is a program for young people ages 6 to 21 years old, with mild to moderate developmental disabilities. This 5-week program includes activities such as: arts and crafts, sports, games, trips and more. There will be 1 camp leader per 5 participants.

Beginning July 5th, 2022 through August 5th, 2022



The camp operates Monday through Friday
9:00 am to 3:00 pm (doors open at 8:30 am)

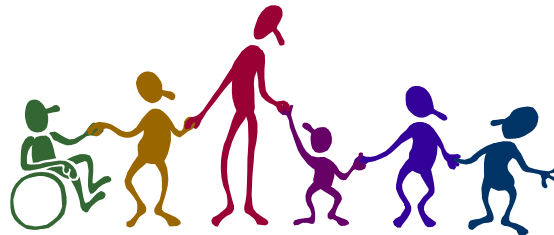
Camp is located at:
Mars Estates Elementary School
1500 E. Homberg Avenue
Baltimore, MD 21221



Registration is on a first come first served basis until camp is full.

Registration is \$250.00

For more information or an application, please contact:
Essex-Stembridge Recreation & Parks Office
410-887-0255, 100 Mace Avenue, Baltimore, MD 21221
or application can be downloaded from the Council website
www.essex-stembridgerec.com



DEPARTMENT OF
RECREATION AND PARKS

Baltimore County Department of Recreation & Parks

This program is designed to provide a healthy and enjoyable leisure experience for your child. However, this is not a licensed childcare program and is not designed to provide child care. Therefore, parents are encouraged to discuss attendance expectations with their children. Department staff / volunteers cannot detain youth wishing to leave at any time. Should you require special accommodations (i.e. sign language interpreter, large print, etc.) please give as much notice as possible by calling the Recreation Office at 410-887-0255 or the Therapeutic Office at 410-887-5370 (voice). Deaf/Hearing impaired may use Maryland Relay. This program participates in leagues/tournaments governed by a non-recreational council body. Referrals to these organizations are available thru your local recreation office: 410-887-0255.