

# TEAM S.E. REGION



[WWW.ARTTEACHERS.ORG](http://WWW.ARTTEACHERS.ORG)

editor Terri Clements



## PRESIDENTS COMMENTS

SEPTEMBER, 2022.... School is back in session, fall fruits and vegetables are now starting to be harvested and OH the wonderful colorful subjects for still life and additions to our art work. Take advantage of them of them and photograph what you can't use right now. I don't know about you, but computers are so frustrating when YOU goof up and it doesn't work. I had a beautiful write up about an old master artist to illustrate details and mood, colors, etc. I deleted accidentally and could not get it back. Grrrrr. Oh well we will go another way. Mostly what I wanted to portray was that we have so much control over what we want to tell and show to the viewer in our art work. We can show realism, abstract, non objective, or any style we choose. We project mood, time, feelings, place, action,

calmness, quiet, color, event, or anything wanted to be portrayed in the painting. A glaze over a painting can change the whole concept from day to night, draw colors into a common tone, subdue brightness, or many other features. Glazes are a great asset to most types of media but handled with knowledge of application and results. A very thin yellow ocher glaze adds a patina of age and draws the colors into harmony. Old masters had several paintings going at one time, and used drying time and repeated additions and layers of glazes. Some show by X-ray complete changes of compositions. So if something is not right as you wanted it, make the new changes. Even finished works can be changed.

Our web masters are asking for donations of YOUR lesson plans you have created to share, so please send them so they can be used free only by our paid members. Do not send other teachers lessons with out their permission. Just one of the great assets of being a member of TEAM S.E. REGION.

**Gloria Stegman TEAM SE Regional President**



*Have a safe Labor Day*

(CHANGES ARE BEING MADE. )

**S. E. REGION BANK ACCOUNT "HAS A NEW NAME."**

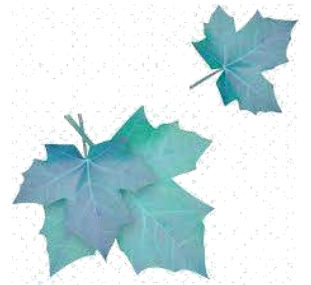
Our S. E. Region bank account is named **"ART TEACHERS INC."** so please write that and not personal names on all checks unless it is for that particular person.





**CINDY WRITES, BREAKING NEWS!!!!!!!!!! I**

am so excited to finally be able to share with everyone what I have been working on just for you! We have a completely revamped website with lots of new features. To start; The website is the same [www.artteachers.org](http://www.artteachers.org)



Oh where to begin?? The biggest piece is the SHOP. If you go looking right now there are only sample items in there. I wanted you to be able to see what is coming once we get through the teachers selection process for the new classes

that will be offered at our Spring conference. You will now be able to purchase your conference selections online with a credit card or PayPal. This includes paying for the hotel, registration, annual dues, and classes, plus any additional meals if you are not staying at the hotel. Have no fear if you want to pay by check you will still be able to do so by printing the registration form and sending it in the mail just like you have in the past.

The class selection will be available in the single page viewing and in the individual class by class with a LARGE picture and relevant info.

LAST YEAR'S is posted just as a sample for you to see. There is also a members only page that only current members will be able to access. This is where the E-Packets are housed. We have new E-Packets loaded with more to be loaded shortly.

We also now have a teachers calendar page. If you are a member teacher and have classes that you are teaching or are hosting an event at your studio, when you send that info to me I will add it to the calendar.

Our teachers will be listed with their contact info and website info if available. Those that taught the previous year and the current year will also be in a separate listing so you can quickly find them. They will be included in the overall teacher list also. There are more items to come.

A memorial page, a history page, video clips, and more photos. Check out the new site, and let me know what you think. Is there something you would like to see that isn't there? Drop me a line. Again, remember there are no current conference classes and the form and sample class out there are just that. Placeholder samples so you can see what it will look like.

We are gathering teacher submissions now and will hopefully have the 2023 Event posted for you before the end of September !





# SUNSHINE CORNER



First day of  
Fall September

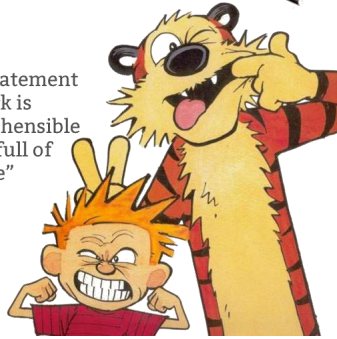
## SEPTEMBER BIRTHDAYS

- 1—Diane Davis
- 6—Tony Carchia
- 10—Shirley Bauer

## OCTOBER BIRTHDAYS

- 5—Harold Champagne
- 19—Karen Close
- 20—Eleanor Thompson

"As my artist's statement explains, my work is utterly incomprehensible and is therefore full of deep significance"  
- Calvin



# VALUE

IS THE RANGE OF LIGHT TO DARK.

VALUE CHANGES WITH BLACK + WHITE      VALUE CHANGES WITH COLOR

A VALUE SCALE SHOWS THE CHANGE OF LIGHT TO DARK.

THIS IS A PENCIL VALUE SCALE.      THESE ARE LINE TECHNIQUES:

- ONE LINE: SHADING WITH LINES
- TWO LINE: SHADING WITH LINES AND HATCHING
- THREE LINE: SHADING WITH LINES, HATCHING, AND STIPPLING
- FOUR LINE: SHADING WITH LINES, HATCHING, STIPPLING, AND TINTING
- FIVE LINE: SHADING WITH LINES, HATCHING, STIPPLING, TINTING, AND SHADING WITH COLOR

TO A LIGHT OR DARKER COLOR, ADD MORE BLACK OR A FEW MORE WHITE TO CHANGE THE VALUE.      THESE ARE BLENDING TECHNIQUES:

SHADING APPLIED TO OBJECTS:

CONTRAST = TO SHOW UNLIKENESS (SOMETHING DIFFERENT, OPPOSITE, OR DISSIMILAR)

LIGHT AGAINST DARK (BLACK + WHITE)      LIGHT AGAINST DARK (COLOR)      PATTERN AGAINST NO PATTERN (BLACK + WHITE)      PATTERN AGAINST NO PATTERN (COLOR)      SHADING IS A RANGE WITH SOME SPACE      DETAILED AGAINST UNDETAILED SPACE

I WILL LOOK FOR VALUE AND CONTRAST, BOTH NATURAL AND MAN-MADE, IN MY ENVIRONMENT.

## Creative PEOPLE ...

1. easily bored
2. risk takers
3. color outside the lines
4. think with their heart
5. make lots of mistakes
6. hate the rules
7. work independently
8. change their mind alot
9. have a reputation for eccentricity
10. dream big



"Have no fear of perfection, you'll never reach it"  
- Salvador Dali

"Imagination is the beginning of creation.  
You imagine what you desire, you will what you imagine, and at last, you create what you will"  
- George Bernard Shaw

**CIRCLE OF CONCERN:** We hope that Carole Earle, previous long time Western Region President, is healing nicely from her fall, which resulted in broken ribs.



# WHO'S WHO IN S. E. REGION

President - Gloria Stegman

Vice President - Cindy Makowski

Treasurer - Diane Foreman

Secretary - Judy Nicewicz

Auxiliary Officer - Este Rayle

TEAM Consultant - Este Rayle

Newsletter Editor - Terri Clements- graphics- Gloria Stegman-Text

Sunshine Editor - Terri Clements

WEBMASTERS - Cindy Makowski, Diane Forman, Harold Champagne, SmokeyBeare,

Chairperson for 2023 Regional meeting Cindy Makowski [teamseinformation@yahoo.com](mailto:teamseinformation@yahoo.com)

SE Reg Facebook Administrator -Judy Nicewicz



**DUES ARE DUE AS OF JANUARY 1ST, 2022 ( Information below. )**

**FREE ONLINE PACKETS.**

WE offer free on line lesson packets available only to paid members.

These are now available in the new website under members only. You will need to create an "account/password" and as long as dues are current you will be able to access the E Packets. New ones have been added and more are on the way . We Are still looking for more packets to be donated to put online. If you have a packet you can share they can be sent directly to **Cindy** as a PDF or Word file attached to an email at [Arteachers@yahoo.com](mailto:Arteachers@yahoo.com). We really feel this maintains some memberships.

## FACEBOOK

Check our TEAM SE. Facebook page for news of members.

Judy Nicewicz [nicewicz1436@comcast.net](mailto:nicewicz1436@comcast.net) , is good enough to edit the site for us.

T.E.A.M. South East (Teachers and Educators in Art Material)

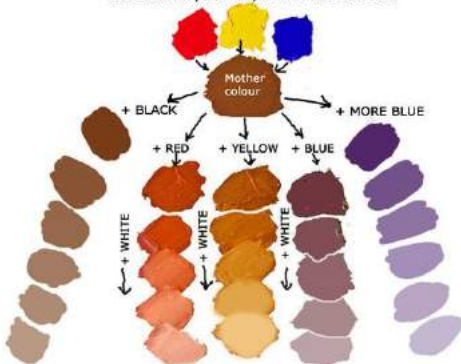


TEAM would like to thank Harold Champagne and Smokey Beare for all their years of service on the webpage. With the rollout of the new web page, Cindy Makowski, with the help of Diane Foreman, will be taking over web master duties. If you have any questions, concerns, or suggestions, please feel free to reach out to them at [Arteachers@yahoo.com](mailto:Arteachers@yahoo.com)



### MIXING SUBTLE COLOUR RANGES FROM PRIMARY COLOURS

Start with red, yellow and blue only. Mix them together to form a neutral "Mother Colour". Use twice as much yellow as you do of the red & blue.



GREENS ARE EASY TO GET - JUST MIX BLUE & YELLOW TOGETHER AND ADD A LITTLE RED TO MAKE INTO OLIVE GREENS.



Blessed is she who has 173 home projects going at one time, for she shall always have choices.



*AlliWood*  
www.jenniferallwood.com