

32Z-METER TRUCK-MOUNTED SPECIFICATIONS

Length	36' 5"	(11.09m)
Width	8' 2"	(2.50m)
Height	12' 10"	(3.90m)
Wheelbase	223"	(5,664mm)
Front axle weight	17,641 lbs	(8,002kg)
Rear axle weight	33,352 lbs	(15,128kg)
Approx. total weight	50,993 lbs	(23,130kg)

Based on Model MACK MRU 613 with .16H pump cell.
Weights are approximate and include pump, boom, truck, driver and full fuel tank.
Varies with options selected.
Dimensions will vary with different truck makes, models and specifications.

BOOM SPECIFICATIONS | MULTI-Z DESIGN

Height & Reach		
Vertical reach	106' 0"	(32.30m)
Horizontal reach	91' 10"	(28.00m)
Reach from front of truck*	83' 8"	(25.50m)
Reach depth	67' 3"	(20.50m)
Unfolding height	24' 11"	(7.60m)

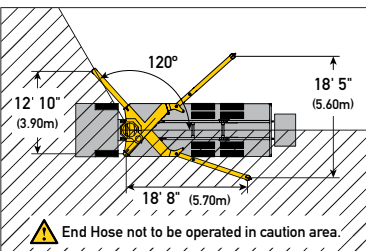
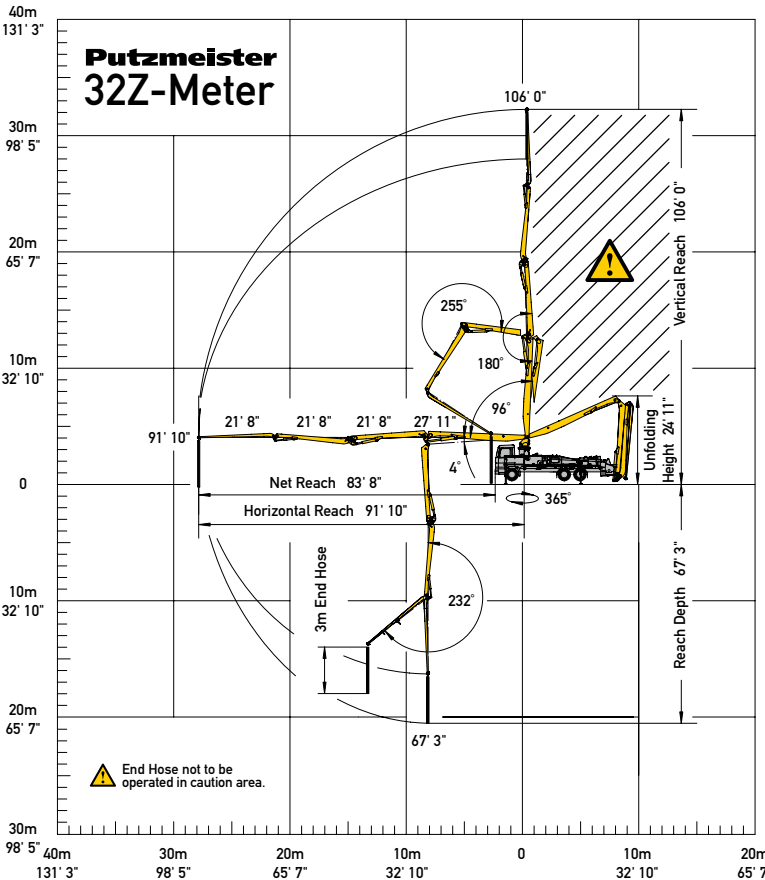
4-Section Boom		
1st section articulation	96°	
2nd section articulation	180°	
3rd section articulation	255°	
4th section articulation	232°	
1st section length	27' 11"	(8.50m)
2nd section length	21' 8"	(6.60m)
3rd section length	21' 8"	(6.60m)
4th section length	21' 8"	(6.60m)

General Specs		
Pipeline Size (ID) metric ends	5"	(125mm)
Rotation	365°	
End hose — length	10' 0"	(3.00m)
End hose — diameter	5"	(125mm)
Outrigger spread L - R — front	18' 0"	(5.50m)
hydraulically extend out & down		
Outrigger spread L - R — rear	22' 4"	(6.80m)
hydraulically swing out & extend down		

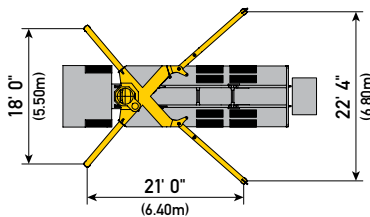
PUMP SPECIFICATIONS

	32Z.12H	32Z.16H
Output — rod side	144 yd ³ /hr (110m ³ /hr)	210 yd ³ /hr (160m ³ /hr)
— piston side	97 yd ³ /hr (74m ³ /hr)	146 yd ³ /hr (112m ³ /hr)
Pressure — rod side	1,233 psi (85 bar)	1,233 psi (85 bar)
— piston side	1,624 psi (112 bar)*	1,885 psi (130 bar)*
Material cylinder diameter	9" (230mm)	9" (230mm)
Stroke length	83" (2,100mm)	83" (2,100mm)
Maximum strokes per minute		
— rod side	21	31
— piston side	14	21
Volume control	0-Full	0-Full
Vibrator	Standard	Standard
Hard-chromed material cylinders	Standard	Standard
Hydraulic system	Free Flow	Free Flow
Hydraulic system pressure	5,075 psi (350 bar)	5,075 psi (350 bar)
Differential cylinder diameter	5.1" (130mm)	5.5" (140mm)
Rod diameter	3.1" (80mm)	3.1" (80mm)
Maximum size aggregate	2.5" (63mm)	2.5" (63mm)
Water tank — pedestal	185 gal (700L)	185 gal (700L)

Maximum theoretical values listed.
* Applies to units mounted on PMA stock truck — MACK MRU 613
• Standard delivery line system rated at max line pressure of 1,233 psi (85 bar)

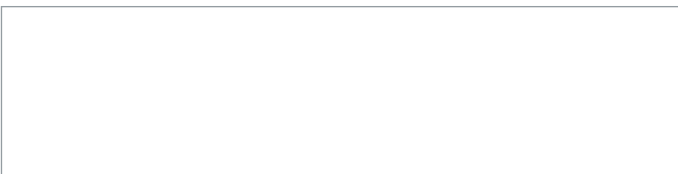


Optional One-Sided Support (OSS) 120°



Photos and drawings are for illustrative purposes only.

Authorized Distributor



Putzmeister America, Inc. Phone (262) 886-3200
1733 90th Street Toll-free (800) 884-7210
Sturtevant, WI 53177 USA Fax (262) 884-6338

PutzmeisterAmerica.com

pmr@putzam.com

