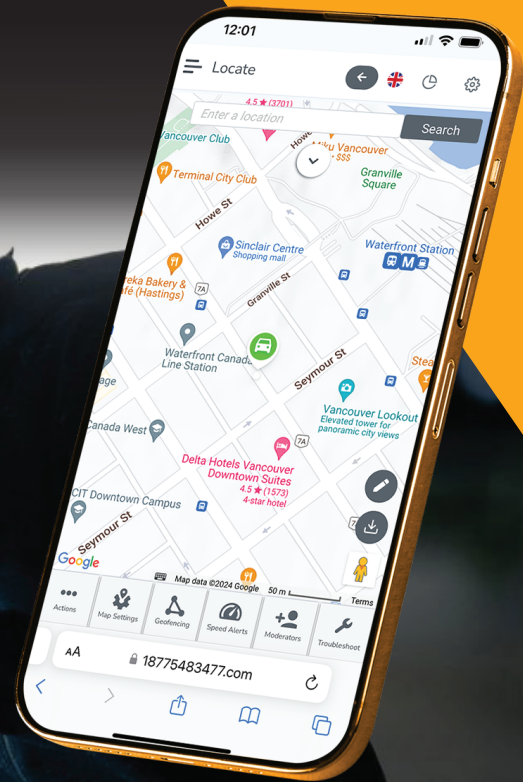


INQUEST INSTALLATION GUIDE



1

Please take the device outside to ensure there are no obstructions between the device and the sky.

2

Open the device by pulling up on the top cover corner

3

Locate the switch and turn it to the ON position

4

You will begin to see a blue and yellow flashing LED. Please wait for both to go solid before closing the cover. This process can take up to 3 minutes.

5

You are now ready to install the Inquest Recovery device in the asset. Install the Inquest Recovery device in a hidden place within the asset.

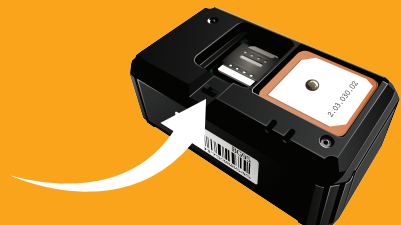
STEP

2



STEP

3



STEP

4



Note*** Do not install the Inquest Recovery device inside a metal enclosure. Once installed you may use the Inquest Recovery mobile app or online desktop portal to view its last pinged location. The Inquest Recovery device will provide one (1) preset location ping per day. For further details you may contact us