



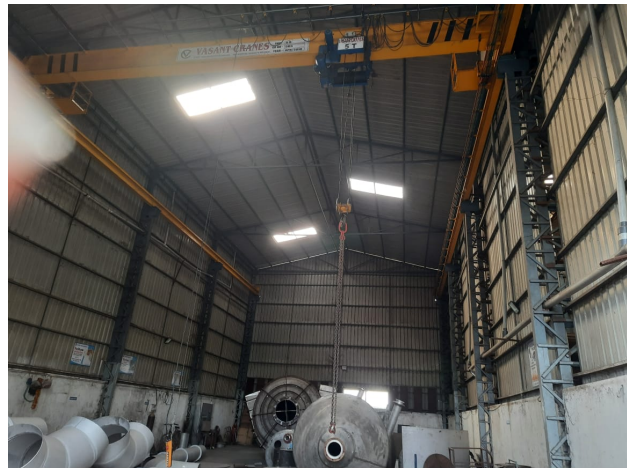
IPOG ENGINEERS PVT LTD

Plot No. 3, GAT No. 297, Near Power Electronics, Dehu-Alandi Road,
Talawade, Pune, Maharashtra – 411060

GSTIN: 27AAGCI5866H1Z6, ipogengineers@gmail.com

Ipog Engineers Private Limited established in 2022 with the motto of "Customer Satisfaction Through Quality And Timely Delivery" is located in Talawade Industrial Area, Pune, Maharashtra. Health & Safety is of paramount importance to us. Our day to day activities are carried in the utmost safe conditions without any compromise in quality and safety.

Ipog Engineers offers a wide range of products to process industries with different materials of construction such as Stainless Steels, Duplex Steel & Super Duplex Steels. Our product range comprises of Pressure Vessels, Heat Exchangers, Reactors, Ribbon Blenders, Screw Conveyors, Silos and other special products as per customer requirements. Our highly qualified management team have 30 years of rich experience in process equipment fabrication and site works. Our professional team supported



by our skilled workforce made us the preferred equipment supplier to our customers. We are totally committed to quality in all we do. We are regularly supplying our products to various pharmaceutical, chemical and oil industries. The offered products are manufactured using quality material and pioneering technology in line with set industrial quality norms and standards.



Ipog Engineers parent company Ipog Industrial Technologies is established in 2012 and serving customers in Defence, Industrial and Aerospace sectors. It is ISO 9001:2015 and AS9100D certified company with expertise in precision machining and special alloy fabrication. Our machine shop at Hyderabad is 18000 square feet and fabrication shop under 10 TON EOT is 9000 square feet. Having workshops at multiple location give advantage to our customers in freight time and transportation costs.

Site Fabrication Of Tanks & Pipelines



Site work at M/s Bectolac Formulations

Whether a project is a process upgrade for an existing facility or a completely new process installation, our highly experienced team of engineers and technicians will work together with our customers to complete the project installations within specified delivery periods. We have executed site modifications for our customers in Pharma and Food industries. We appreciate the fact that every project is unique and the expertise of our engineers and technicians, backed by our skilled work force, guarantee for a safe, efficient installation and within stipulated timeframes and enable our customers to achieve pre-commissioning, commissioning of plant as per project schedules.

Manufacturing Facilities & Manpower at Pune:

Workshop area under EOT crane: 5000 Sq. ft

Machinery:

5 Ton EOT crane

Plate Rolling machine

GTAW welding machines

SMAW welding machines

Broch Cutter & drilling machine

Hand grinders (7" & 5")

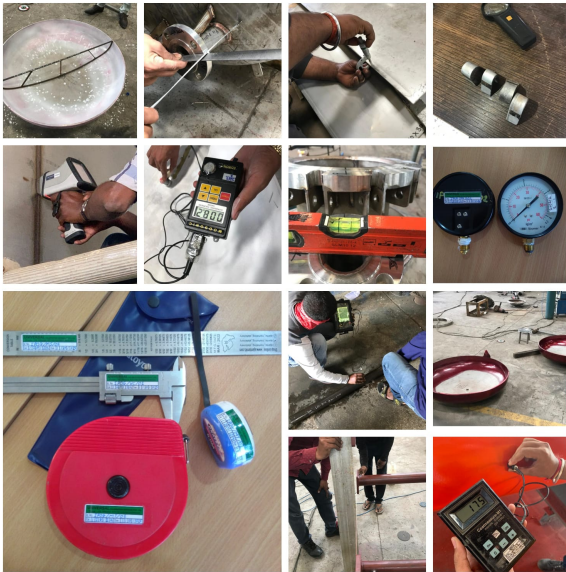
Hand pump for hydro / pressure tests

Oxyfuel plate cutting machine

Hot air gun



Ipog family consists of skilled and unskilled workers on role and on contract. Our skilled welders are qualified in all weld positions for CS, SS, DSS (Duplex Steels), SDSS (Super Duplex) and Inconel materials and have more than 10 years' experience in GTAW and SMAW weld processes. The average work experience of our fitters is 15 years. We have associated with various organisations for carrying out equipment design (using licensed software like PV Elite, FEA) and for NDT services. This will ensure us seamless job execution from design till equipment dispatch.



Quality is ingrained in Ipog Engineers work processes and we at Ipog, implement strong quality control checks at every stage of equipment manufacturing. Our QC engineers are qualified to conduct NDT tests (PT, RT, UT and MT) according to ASNT TC-1A. We do carryout material testing (Mechanical, Chemical and IGC tests) at NABL approved labs irrespective of whether it is project requirement or not. All our measuring instruments are calibrated from time to time. We maintain final documents (Manufacturer Record Books) and all traceability records for a period of 5 years from the date of equipment supply. Though we are in the process of

obtaining ISO 9001:2015 certification, our Quality Management System is very robust and our management team closely monitor it's implementation across our organisation.

Condition Monitoring of Equipment, Pipelines and Structures

One of the core competencies of Ipog Engineers is condition assessment of process equipment and piping / structures in situ through various techniques as per and advise whether the equipment is fit for service or it require any rectification / modification for efficient and safe operation. Condition monitoring at regular intervals, particularly for equipment working in highly corrosive environments or working at higher temperature will help to avoid 80% of accidents in process plants. Ipog Engineers support their customers in carrying out site modifications / rectifications in compliance with Codes and Standards including 3D modelling and plant automation.



We are supplying process equipment in regular basis to various pharma, FMCG and process industries. Shown here are some of the equipment recently supplied to Bectolac Formulations, Hyderabad and Assam Bio Refinery Plant at Numaligarh.

Please visit www.ipogengineers.com and www.ipog.co.in or call us on +91 9881250772 or write to us at ipogengineers@gmail.com for more details.