



AG METAL INDUSTRY LLC

“Quality in Craft, Trust in Service”

About us

AG Metal Industry LLC is more than a steel and metal fabrication company. We are a collective of experienced professionals, committed to transforming your ideas into high-quality products.

Our team's expertise allows us to create your unique needs, whether you have a model, a photo, a video, or just an idea.

We believe in building trust through delivering quality, ensuring that our products not only meet but exceed your expectations.

So why wait? Contact us today and let us turn your ideas into reality.

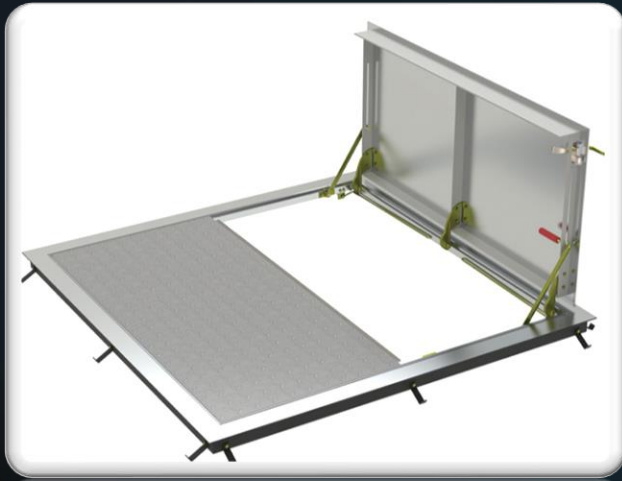
With AG Metal family, you will definitely experience the difference!

Custom Metal Fabrications

Materials: Aluminum, Stainless Steel (SS), and steel

- Tailored to specific requirements or unique applications
- Designed and fabricated according to client specifications
- Crafted by skilled professionals to meet exact needs and standards
- Offers versatility and flexibility for specialized projects
- Sleek and modern designs crafted from metal materials
- Durable construction for long-lasting use
- Available in various styles, finishes, and colors to match any décor





Hatch covers

Material: Aluminum and Stainless Steel (SS)

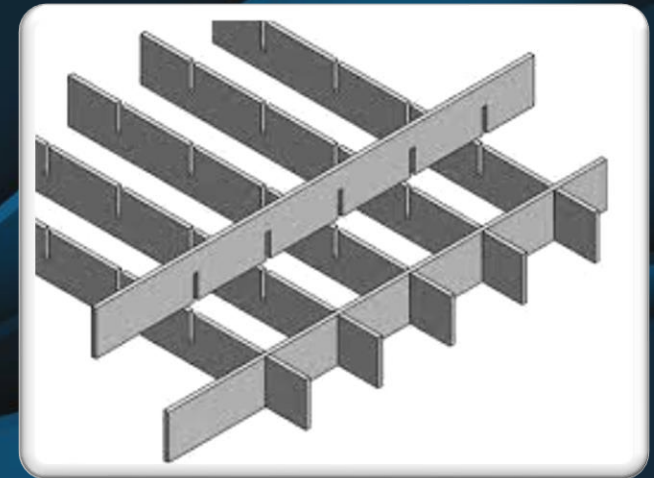
Models: roof, and access covers, Stainless Steel (SS) paver in ground power unit, floor box

- Lightweight and durable for easy handling and long-lasting performance
- Corrosion-resistant material ensures reliability in outdoor environments
- Provide convenient access for maintenance, inspection, or emergency egress
- Available in various sizes and configurations to accommodate different applications

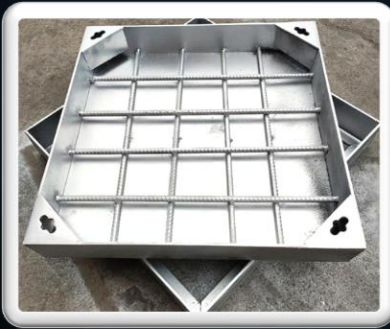
Gratings

Model: steel pressed, aluminum, and press locked metal gratings

- High strength; providing excellent durability for various applications
- Versatile applications; offering versatile solutions for various industries and environments
- Corrosion resistance; ensuring long-lasting performance even in harsh environmental conditions
- customizable options; matching the specific requirements of different applications
- compliant with safety standards for workplace equipment



Manhole covers



Model: aluminum, hot dipped galvanized, double sealed, and Stainless steel recessed manhole covers

- Corrosion-resistant, ideal for outdoor use
- Durable and long-lasting
- Available in various sizes and load capacities
- Can be customized with additional features for extra safety measures
- Cost-effective and low maintenance requirements

Drains

Models: Stainless Steel (SS) floor and gravel guard drains, roof, and shower drains

- Corrosion-resistant; ideal for both indoor and outdoor areas prone to moisture
- High-strength-to-weight ratio allows for reliable support of heavy loads
- Designed to handle water volumes in an efficient way
- Available in various sizes and configurations to accommodate different drainage needs
- Equipped with strainers or grates to prevent clogging and ensure smooth water flow
- Constructed from durable steel for long-lasting performance



Straight and Fixed ladder with safety cages

Material: Aluminum, Mild Steel (MS) and Stainless Steel (SS)

Height: Available in various height to suit specific applications.

- Robust construction for durability and stability
- Fixed design with safety cages for enhanced fall protection
- Non-slip rungs and safety features for secure footing
- Corrosion resistant for longevity in various environment
- Compliance with safety regulation and standards

Finish: Aluminum - Mill Finish

MS - Painted, Powder coating and Hot Dipped Galvanized

SS – Brush finish and mill finish



Mobile work platform

Material: Mild Steel, aluminum and stainless steel

- Mobile work platform design with wheels for easy maneuverability
- Platform for stable standing and working area
- Safety features such as handrails and non-slip Steps
- Ideal for tasks requiring mobility and access to elevated areas.

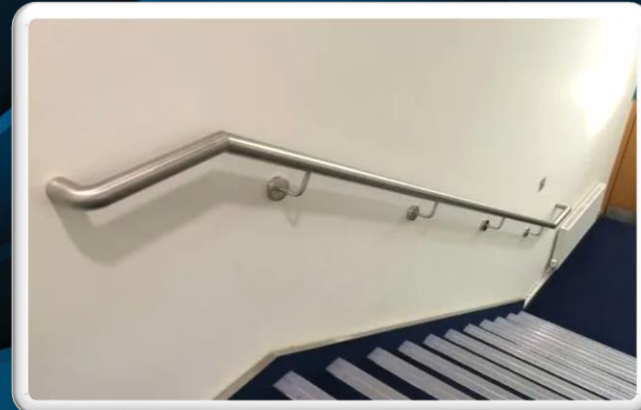
Finish: Painted, color- based on customer requirement



Handrails

Model - Mild Steel (MS) and Stainless Steel (SS), industrial, and custom handrails

- Corrosion resistance, Suitable for outdoor or corrosive environments
- Ergonomic grip; featuring a comfortable grip surface, reducing fatigue and improving comfort during prolonged use.
- Safety enhancement; providing a crucial safety feature, Offering support and stability
- Durable construction; designed to withstand heavy use and harsh environmental conditions.
- Compliance with regulations to meet safety standards
- Customizable design; tailoring to fit the specific needs and dimensions with various configurations and finishes to suit different application.
- Quality craftsmanship; crafted by skilled fabricators, boasting superior quality and resulting in a durable finished product
- Sleek modern appearance enhances the aesthetic appeal of the space
- Easy to clean and maintain for long lasting performance.
- Easy installation for projects with tight time lines or limited resources



Bollards

Model: Fixed, protective, fixed surface-mounted, and removable surface-mounted bollards

- Providing security and protection for building, infrastructure, pedestrians
- Versatile application; suitable for a wide range of settings
- Durable construction to withstand harsh environmental conditions
- Customizable options, with a variety of sizes, shapes, and finishes to match the aesthetic and security requirements of different locations
- Compliance with safety standards; providing reliable protection for perimeter security
- Visible deterrent to potential threats, preventing unauthorized access, and enhancing overall security awareness



Boundary walls

- Secure perimeter protection; demarcate property lines and provide privacy and security
- Durable construction to withstand various environmental factors
- Customizable design; can be made in various styles, heights, and configurations to match the specific requirements of different properties
- Low maintenance; saving time and resources over the lifespan of the installation
- Versatile applications for perimeter security and demarcation
- Compliance with regulations; providing reliable protection for property boundaries and security fencing





Gang drilling machine



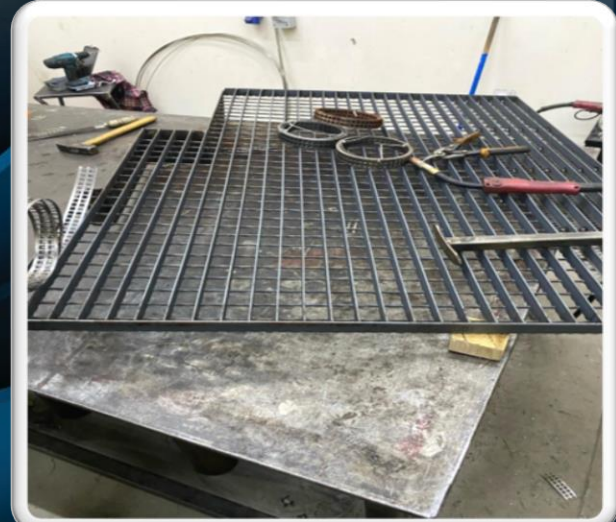
GRP Panel grinding machine



Kiosk



Kiosk

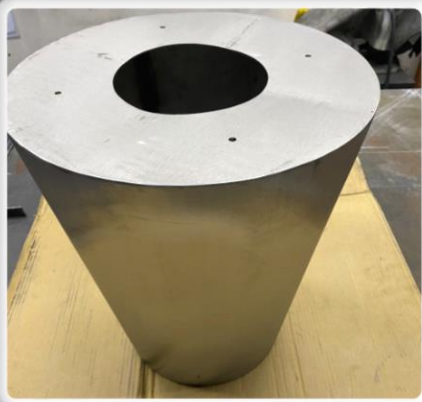


Grating Strip welding

Product images



Work table



Coffee table base



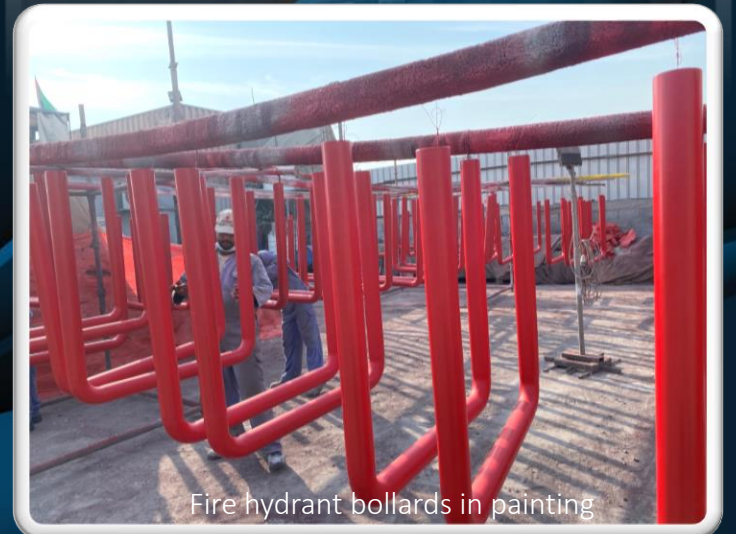
Removable bollard base



Protective bollard



Boundary wall



Fire hydrant bollards in painting

Our vision

Utilizing our expertise in metal and steel fabrication, we are dedicated to delivering unparalleled quality today. Our goal is to lead the industry into the future, innovating with every project, and setting new benchmarks in sustainability and efficiency.

We envision a future where our craftsmanship is recognized globally, contributing to the advancement of infrastructure and creating lasting value for our clients and society. We also place great emphasis on building and maintaining strong, long-term relationships with our clients, as we believe in the importance of mutual success and growth.

Contact Details

Address: Warehouse # 8, Ghani-4, Plot#: 1041, Al Jurf Industrial Area- 2,
Ajman, UAE.

Tel: 06 529 2378,

Email: Info@agmetal.ae, sales@agmetal.ae

Web: www.agmetal.ae

