



MS4 Requirements

FOR:

West Mifflin Borough

West Mifflin Sanitary Sewer & Stormwater Authority (WMSSSA)

Presentation By: Marisa Brletic, KLH Engineers, Inc.

July 31, 2023



Topics for Discussion



Introduction to MS4
3

West Mifflin Stormwater
Summary
7

Introduction to Stormwater Fees
9

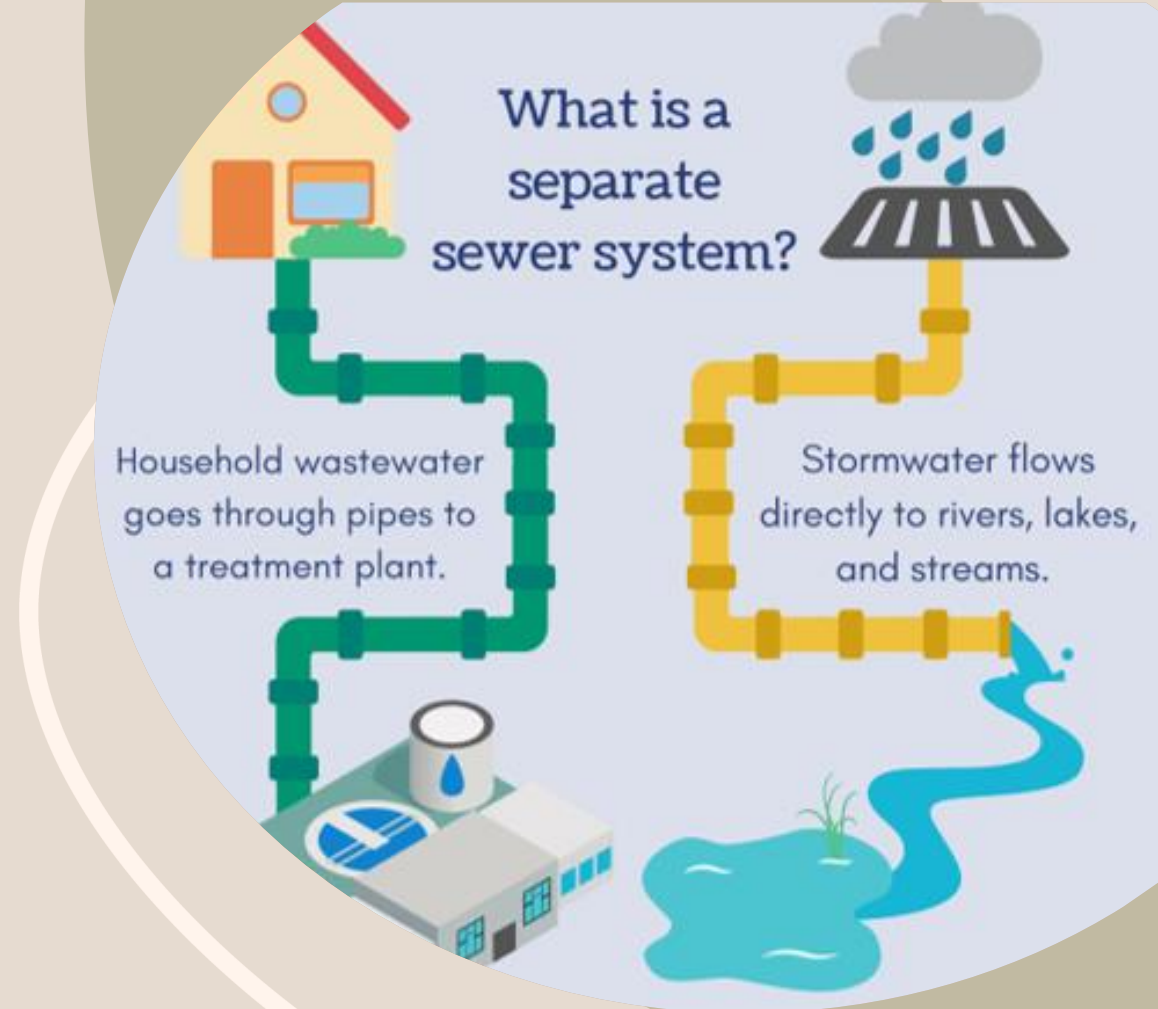
Summary
14

The background features a light grey base with large, overlapping organic shapes in muted green and brown. A white silhouette of a pine branch is visible in the upper left. A white line with a wavy, organic path curves across the bottom right.

Introduction to MS4

What is an MS4?

- Municipal Separate Storm Sewer System (MS4)
- Program through which a permit is issued and managed by the Pennsylvania Department of Environmental Protection (PADEP) – (a.k.a. MS4 Program)
- Municipalities are bound to a National Pollutant Discharge Elimination System (NPDES) Permit for the MS4 when there are urbanized areas within the municipal boundary, which is determined by the U.S. Census Bureau.



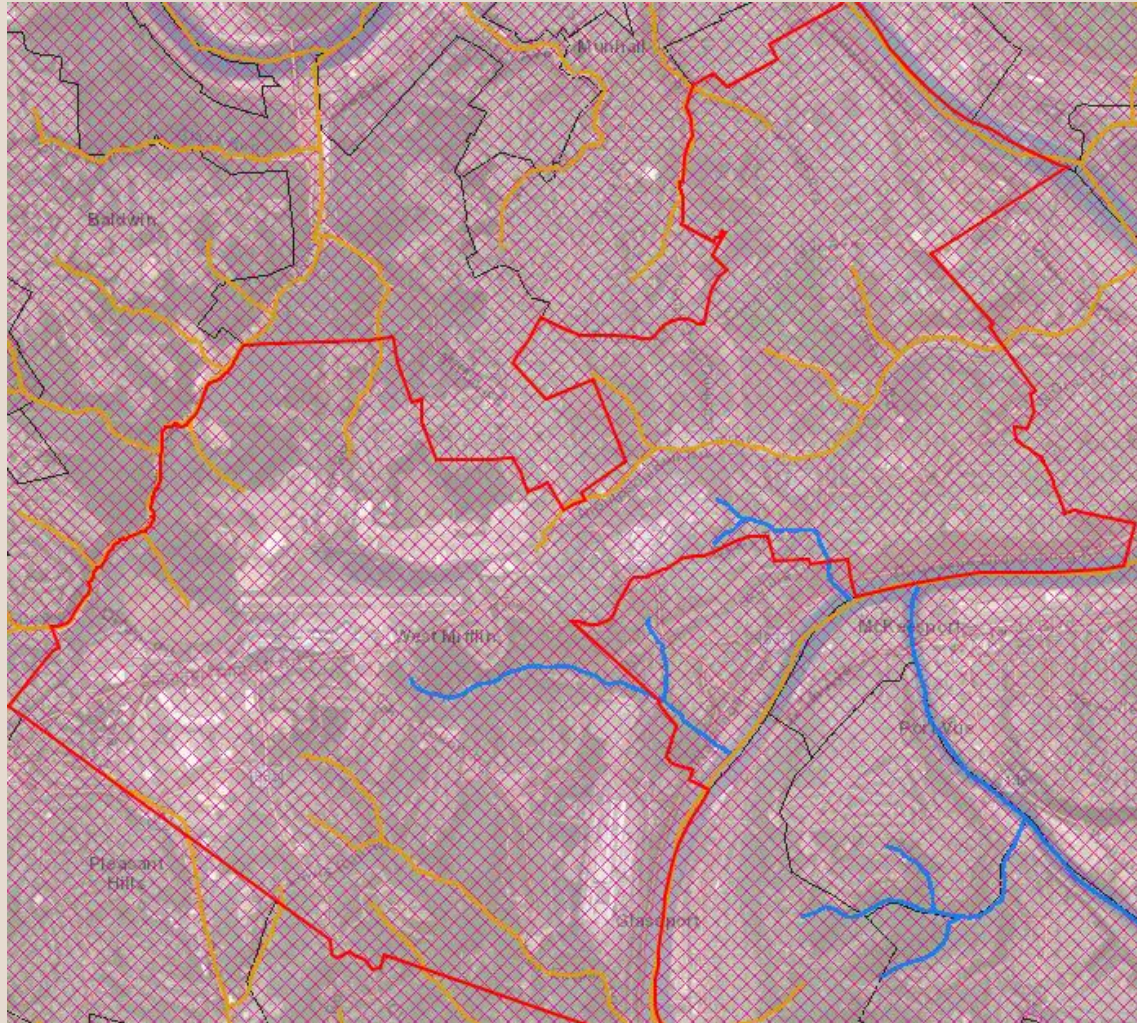
Source: braintreema.gov

What Are The Requirements Under an MS4 Permit?



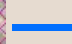
- Municipalities with an MS4 Permit are required to manage and regulate the number of pollutants (sediment, acid mine drainage, fecals, etc.) that enter the waterways of the Commonwealth to meet the state and federal stormwater regulations under the Federal Clean Water Act (CWA).
- Stormwater Management Plan
 - Six (6) Minimum Control Measures
 - Best Management Practices (BMPs) within each measure

Sample SWMP Outline	
◆	Introduction
◆	MCM 1: Public Education and Outreach <ul style="list-style-type: none">○ BMPs 1-4<ul style="list-style-type: none">▪ Measurable Goals
◆	MCM 2: Public Involvement and Participation <ul style="list-style-type: none">○ BMPs 1-3<ul style="list-style-type: none">▪ Measurable Goals
◆	MCM 3: Illicit Discharges Controls <ul style="list-style-type: none">○ BMPs 1-6<ul style="list-style-type: none">▪ Measurable Goals
◆	MCM 4: Construction Site Runoff Control <ul style="list-style-type: none">○ BMPs 1-4<ul style="list-style-type: none">▪ Measurable Goals
◆	MCM 5: Post-Construction Stormwater Management <ul style="list-style-type: none">○ BMPs 1-6<ul style="list-style-type: none">▪ Measurable Goals
◆	MCM 6: Pollution Prevention and Good Housekeeping <ul style="list-style-type: none">○ BMPs 1-3<ul style="list-style-type: none">▪ Measurable Goals
◆	Outfall Inventory Checklist
◆	TMDL Plan (if applicable)

West Mifflin MS4 Requirements



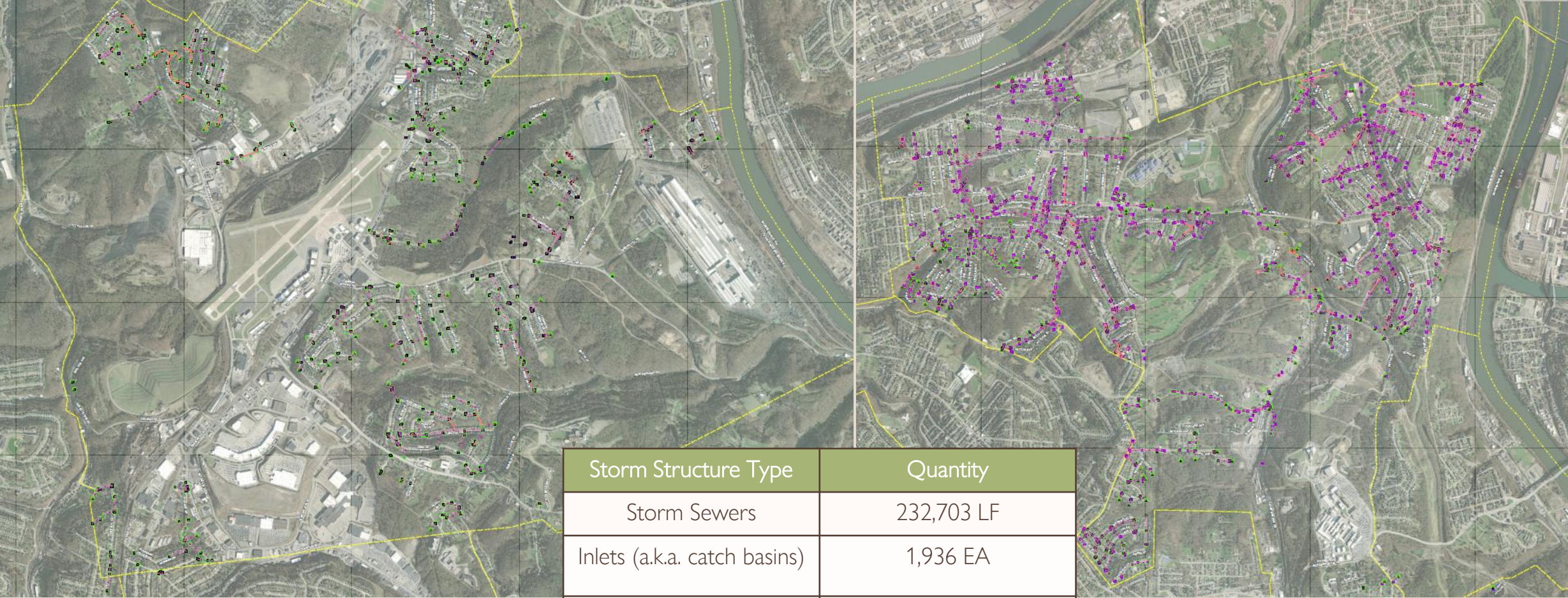
MS4 Name	NPDES ID	Individual Permit Required?	Reason	Impaired Downstream Waters or Applicable TMDL Name	Requirement(s)
WEST MIFFLIN BORO	PAG136166	No		Peters Creek	Appendix B-Pathogens (5)
				Lewis Run	Appendix B-Pathogens (5)
				Unnamed Tributaries to Monongahela River	Appendix A-Metals (4a), Appendix E-Organic Enrichment/Low D.O., Siltation (5)
				Thompson Run	Appendix A-Metals (4a)
				Streets Run	Appendix A-Metals (4a), Appendix E-Siltation (5)
				Monongahela River	Appendix C-PCB (4a), Appendix B-Pathogens (5)
				Homestead Run	Appendix E-Siltation (5)

-  Urbanized Areas 2010
-  Impaired Streams Assessments
-  Supporting Streams Assessments



West Mifflin Stormwater Summary

West Mifflin Storm Sewer System

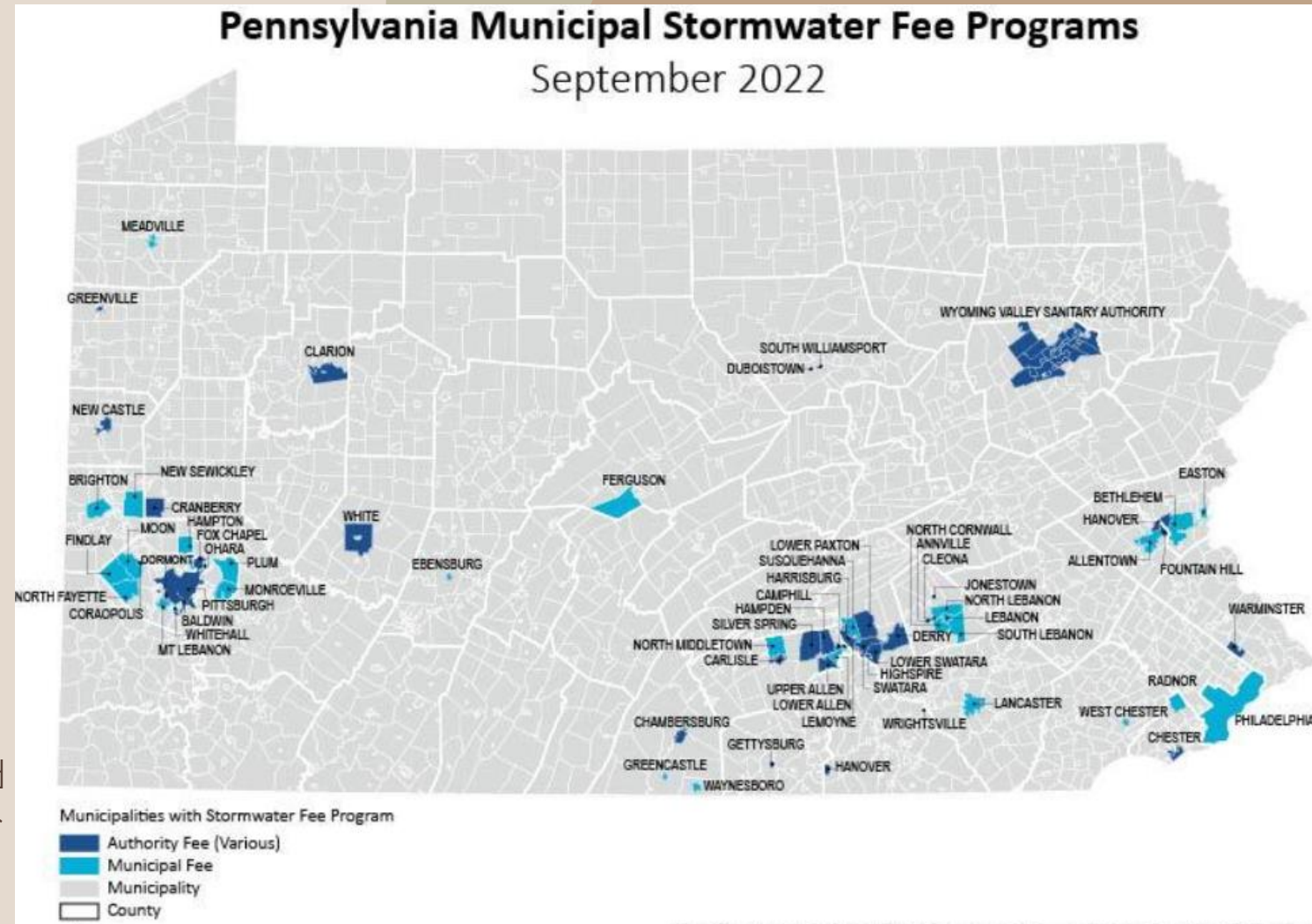




Introduction to Stormwater Fees

Stormwater Fees

- Who has them?
- Why are they implemented?
 - To help municipalities raise funds for their stormwater sewer regular maintenance as well as meeting their MS4 permit requirements.
- How are the fees distributed?
 - Each municipality is different on determining their stormwater fee.
- West Mifflin Sanitary Sewer & Stormwater Authority has developed a stormwater fee
- Enforcement Actions could be distributed by the EPA and DEP if West Mifflin Borough and WMSSSA do not comply with regulating their stormwater management.



WMSSSA Stormwater Fee

- Calculated based on the square footage of impervious surface on your property and Equivalent Residential Units (ERU).
 - 1 ERU = 2,200 sq.ft.
- Residential
 - 8,200 properties
 - \$7.00 flat monthly fee
- Non – Residential
 - Based on ERU Tier System

Non-Residential ERU Fee Schedule

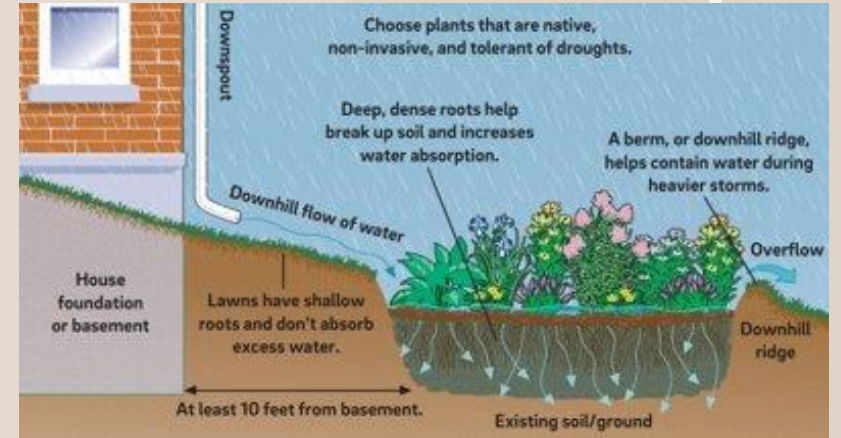
	ERU Range	Cost/ERU
Tier 1	0-200	\$7.00
Tier 2	201-500	\$5.00
Tier 3	501-1,000	\$3.00
Tier 4	1,000-5,000	\$1.00

Plan for Implementation of Fee

- Fee will be implemented shortly after Board Approval of Resolution
- Credit Opportunities for Stormwater Fee Payees:
 - Stormwater Credit Application
 - If a credit is granted, the fee will be reduced by the allowed percentage per credit
 - Valid for 3 years and credit will need to re-apply prior to expiration
 - Stormwater Adjustment Appeal Application
- WMSSSA will be reviewing each application submitted.

How Can I Reduce My Fee?

- Apply for a Stormwater Fee Credit
- Replace impervious surfaces on your property with pervious surfaces
- Implement BMPs on your property to manage stormwater (bioswales, wetlands, ponds, etc.)
- Talk to your neighbors for project ideas
- Other ways to control stormwater:
 - Rain Barrels
 - Rain Gardens



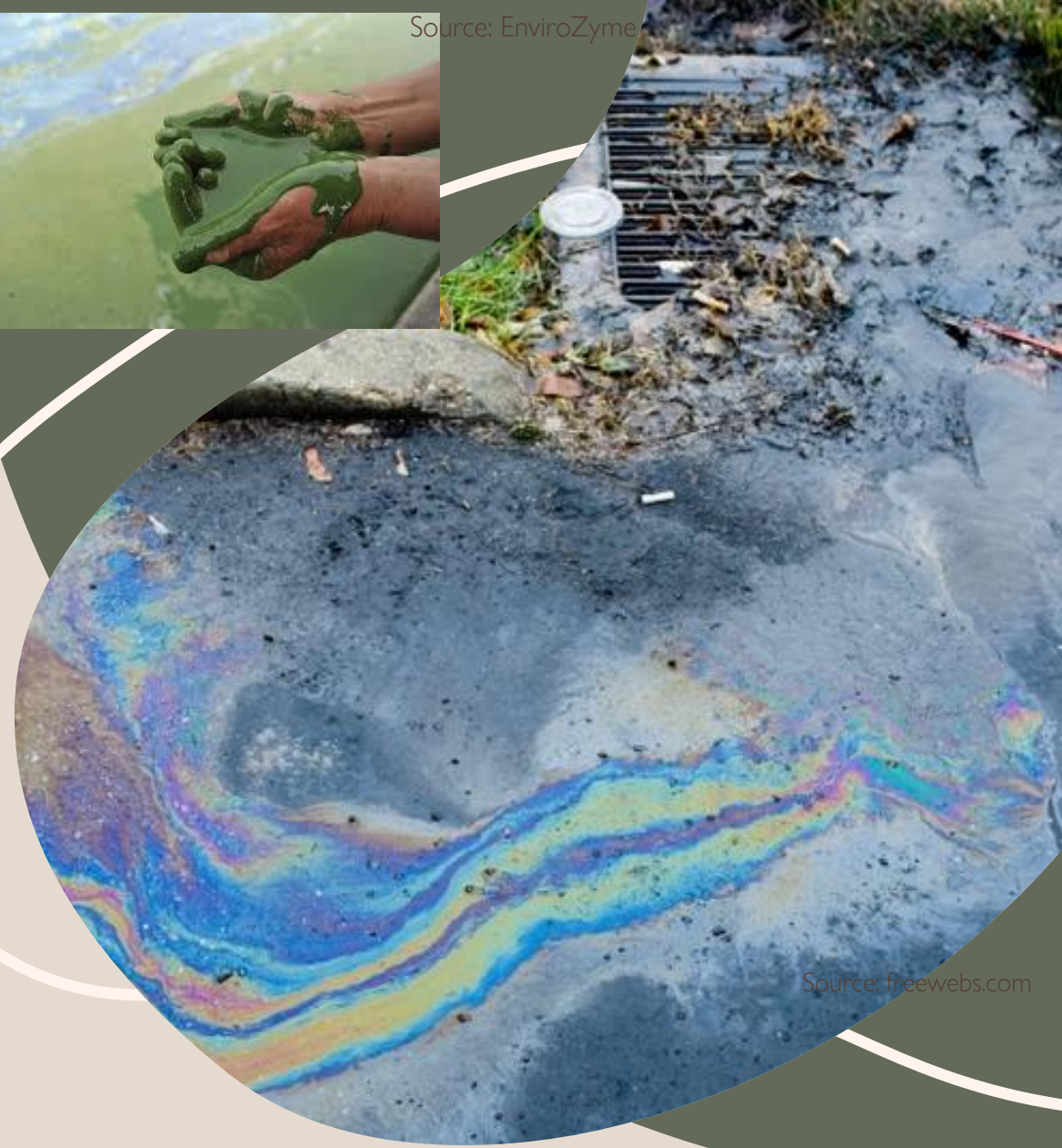
Summary

The implementation of the stormwater fee will assist West Mifflin Borough and West Mifflin Sanitary Sewer & Stormwater Authority to stay in compliance with their MS4 Permit requirements as well as prioritizing the maintenance and operations of the sewers.

**Please contact the West Mifflin Sanitary Sewer & Stormwater Authority for any additional information or questions at (412) 466-6070.



Source: EnviroZyme



Source: freewebs.com

Questions?

Thank you!

Marisa Brletic

mbrletic@klhengineers.com

<https://klhengineers.com/>