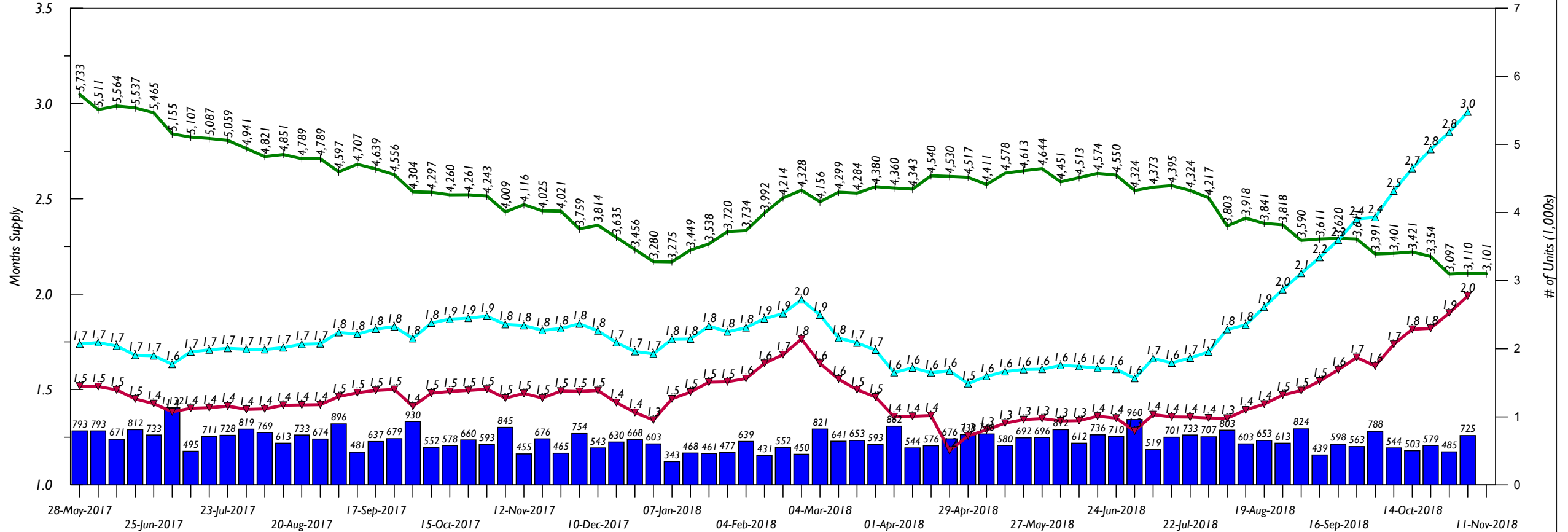


# MLS Month's Supply SFR - 8 Week Average Weekly Closings

Closings (blue) & Under Contract (green) - Right Scale

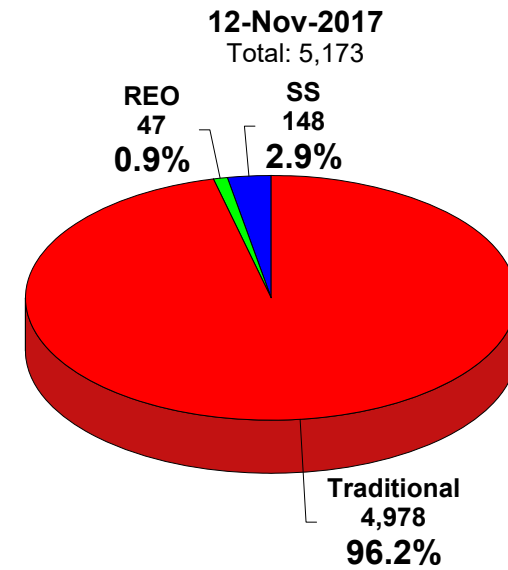
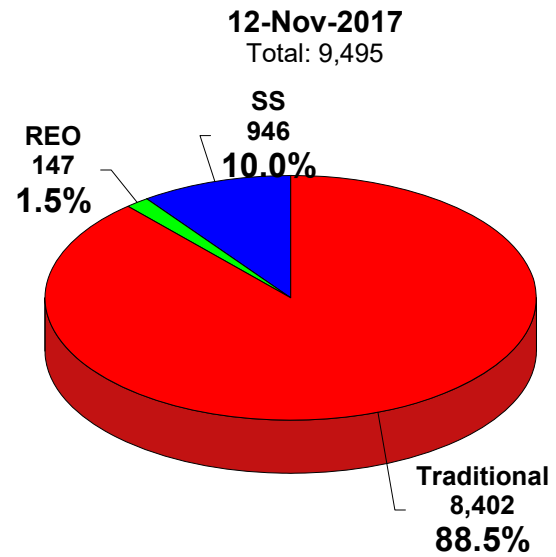
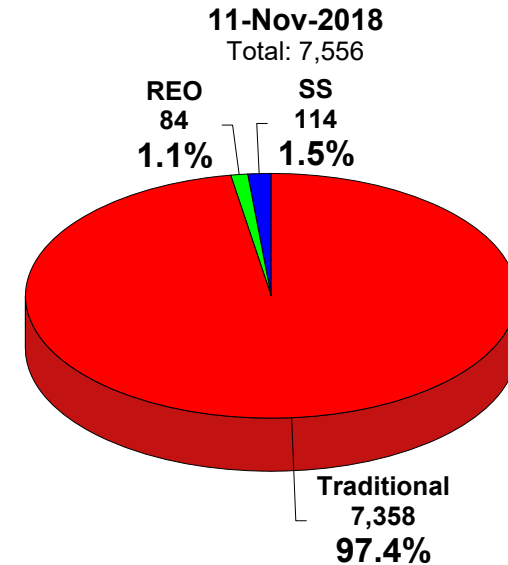
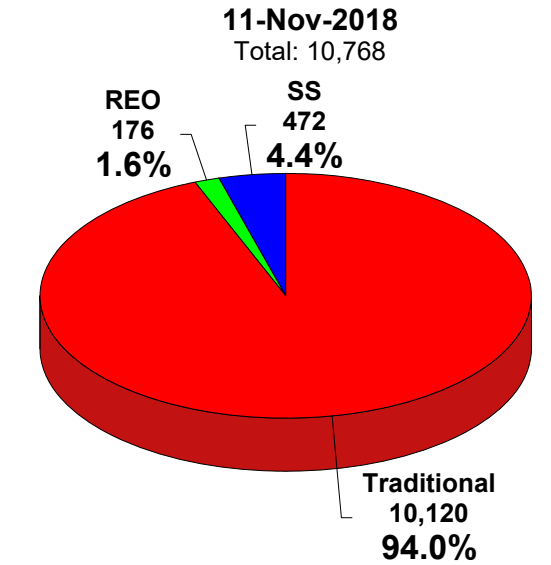
Weekly Closings    Total Under Contract    Months Supply (ER,EA,T,AU)    Vacant Supply



### SFR Listings for Week Ending - Traditional/REO/Short Sale

Clark County

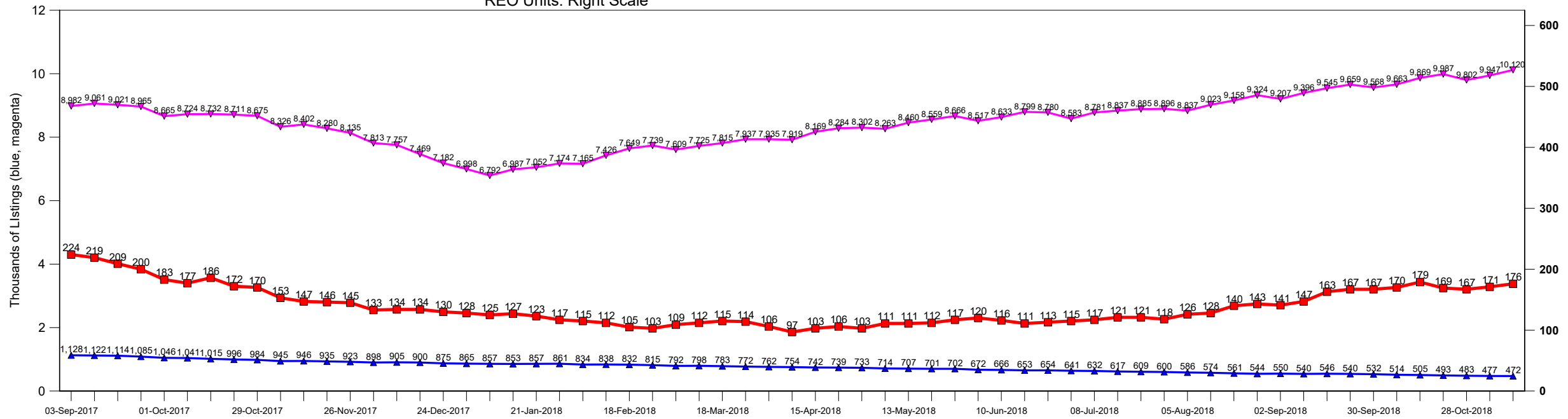
All Listings: Left Pies / Not Under Contract: Right Pies



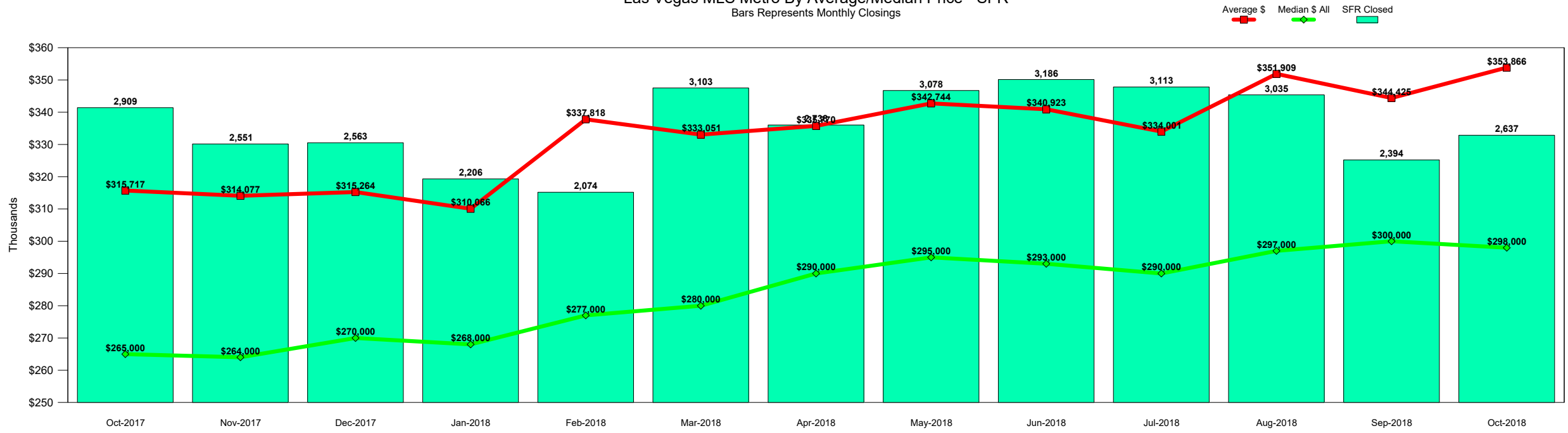
# MLS Listings: Traditional, REO & Short Sale

Units of Supply of ALL Inventory Types (SFR, CON, TWN)  
REO Units: Right Scale

REO    Short Sale    Traditional



Las Vegas MLS Metro By Average/Median Price - SFR  
 Bars Represents Monthly Closings



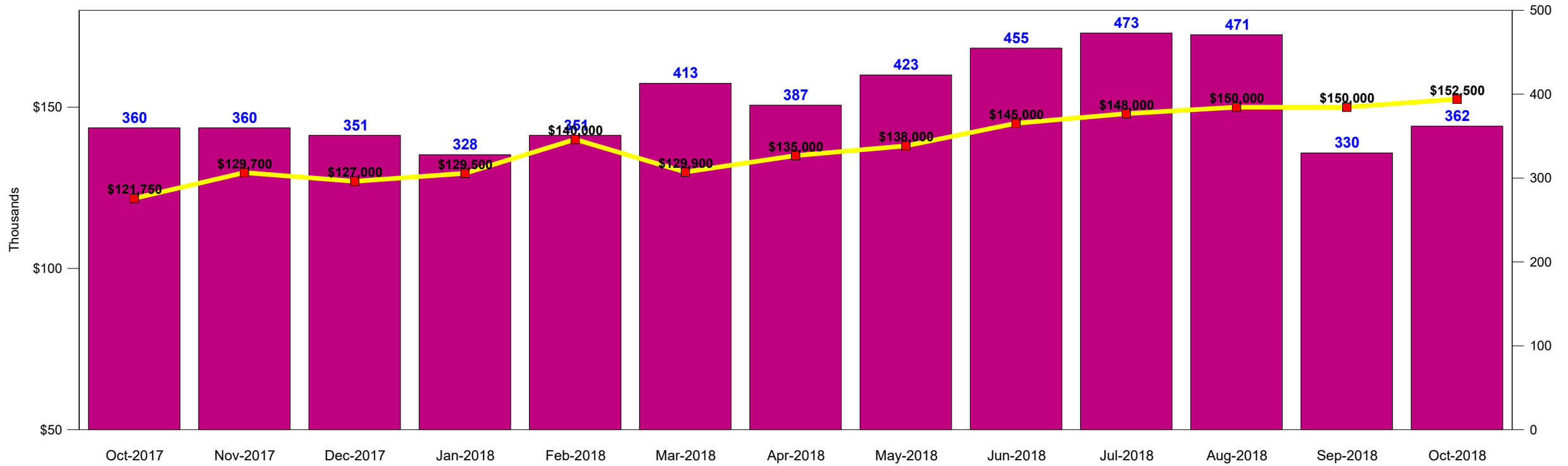
www.ResidentialResources.com

<b>SFR</b>	<b>Average</b>	<b>Median</b>	<b>Median MoM</b>	<b>REO Median</b>	<b>REO Median MoM</b>	<b>COE</b>	<b>COE MoM</b>	<b>COE YoY</b>	<b>Median YoY</b>
Oct-2017	\$315,717	\$265,000	0.0%	\$223,000	-12.5%	2,909	1.9%	13.5%	13.2%
Nov-2017	\$314,077	\$264,000	-0.4%	\$270,000	21.1%	2,551	-12.3%	0.2%	10.0%
Dec-2017	\$315,264	\$270,000	2.3%	\$230,000	-14.8%	2,563	0.5%	-3.9%	14.9%
Jan-2018	\$310,066	\$268,000	-0.7%	\$240,799	4.7%	2,206	-13.9%	4.6%	12.1%
Feb-2018	\$337,818	\$277,000	3.4%	\$262,000	8.8%	2,074	-6.0%	-6.2%	14.3%
Mar-2018	\$333,051	\$280,000	1.1%	\$218,000	-16.8%	3,103	49.6%	-1.3%	14.8%
Apr-2018	\$335,770	\$290,000	3.6%	\$237,000	8.7%	2,738	-11.8%	-2.7%	16.0%
May-2018	\$342,744	\$295,000	1.7%	\$248,000	4.6%	3,078	12.4%	-10.6%	18.0%
Jun-2018	\$340,923	\$293,000	-0.7%	\$227,000	-8.5%	3,186	3.5%	-11.1%	12.7%
Jul-2018	\$334,001	\$290,000	-1.0%	\$143,500	-36.8%	3,113	-2.3%	1.2%	11.5%
Aug-2018	\$351,909	\$297,000	2.4%	\$237,950	65.8%	3,035	-2.5%	-6.4%	13.4%
Sep-2018	\$344,425	\$300,000	1.0%	\$196,750	-17.3%	2,394	-21.1%	-16.2%	13.2%
Oct-2018	\$353,866	\$298,000	-0.7%	\$255,000	29.6%	2,637	10.2%	-9.4%	12.5%

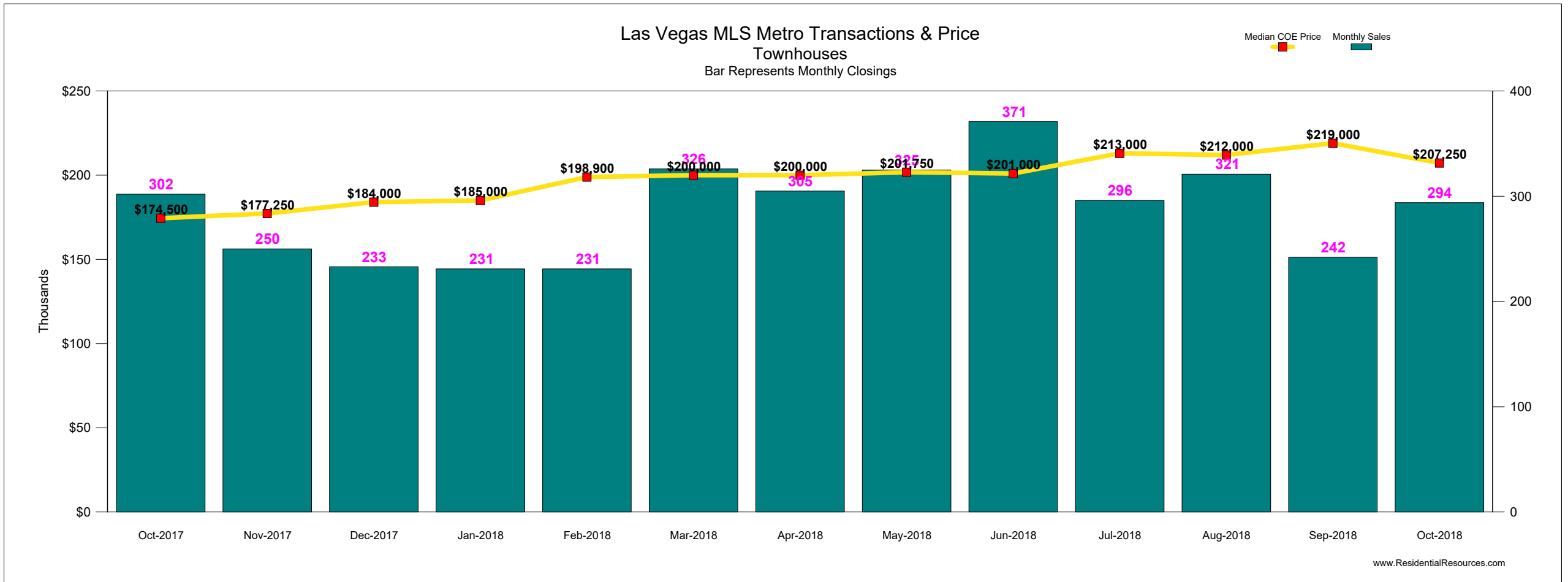
# Las Vegas MLS Metro Transactions & Price

Condominiums: Excluding High Rise

Median Price Data C



CON	Median	Median Change	REO Median	REO Change	SS Median	SS Change	Closings	Closings MOM	Closings YOY	Median \$ YOY
Oct-2017	\$121,750	1.0%	\$105,200	-19.1%	\$93,000	-17.7%	360	-6.5%	2.3%	18.2%
Nov-2017	\$129,700	6.5%	\$95,750	-9.0%	\$106,000	14.0%	360	0.0%	6.8%	29.7%
Dec-2017	\$127,000	-2.1%	\$89,000	-7.0%	\$130,000	22.6%	351	-2.5%	-18.8%	33.7%
Jan-2018	\$129,500	2.0%	\$98,750	11.0%	\$103,000	-20.8%	328	-6.6%	-3.0%	30.8%
Feb-2018	\$140,000	8.1%	\$136,550	38.3%	\$126,500	22.8%	351	7.0%	-3.8%	40.0%
Mar-2018	\$129,900	-7.2%	\$137,000	0.3%	\$135,000	6.7%	413	17.7%	-7.2%	24.3%
Apr-2018	\$135,000	3.9%	\$95,100	-30.6%	\$100,000	-25.9%	387	-6.3%	2.4%	22.7%
May-2018	\$138,000	2.2%	\$122,000	28.3%	\$57,000	-43.0%	423	9.3%	-7.0%	23.2%
Jun-2018	\$145,000	5.1%	\$115,000	-5.7%	\$84,000	47.4%	455	7.6%	-6.4%	29.5%
Jul-2018	\$148,000	2.1%	\$128,113	11.4%	\$147,500	75.6%	473	4.0%	28.5%	26.5%
Aug-2018	\$150,000	1.4%	\$135,000	5.4%	\$103,000	-30.2%	471	-0.4%	8.0%	21.7%
Sep-2018	\$150,000	0.0%	\$123,500	-8.5%	\$157,000	52.4%	330	-29.9%	-14.3%	24.5%
Oct-2018	\$152,500	1.7%	\$129,500	4.9%	\$132,500	-15.6%	362	9.7%	0.6%	25.3%





<b>TWN</b>	<b>Median</b>	<b>Median Change</b>	<b>REO Median</b>	<b>REO Change</b>	<b>SS Median</b>	<b>SS Change</b>	<b>Trad Median</b>	<b>Trad Change</b>	<b>Closings</b>	<b>Closings MOM</b>	<b>Closings YOY</b>	<b>Median \$ YOY</b>
Oct-2017	\$174,500	-8.6%	\$155,000	-13.9%	\$124,000	5.5%	\$175,000	-8.9%	302	11.0%	37.9%	14.4%
Nov-2017	\$177,250	1.6%	\$132,600	-14.5%	\$142,500	14.9%	\$179,900	2.8%	250	-17.2%	3.3%	8.4%
Dec-2017	\$184,000	3.8%	\$117,000	-11.8%	\$130,000	-8.8%	\$188,950	5.0%	233	-6.8%	-9.0%	23.1%
Jan-2018	\$185,000	0.5%	\$175,000	49.6%	\$220,000	69.2%	\$188,250	-0.4%	231	-0.9%	19.7%	12.1%
Feb-2018	\$198,900	7.5%	\$151,000	-13.7%	\$202,000	-8.2%	\$199,500	6.0%	231	0.0%	14.9%	19.8%
Mar-2018	\$200,000	0.6%	\$138,000	-8.6%	\$126,300	-37.5%	\$201,000	0.8%	326	41.1%	22.6%	17.6%
Apr-2018	\$200,000	0.0%	\$164,000	18.8%	\$144,164	14.1%	\$200,000	-0.5%	305	-6.4%	7.4%	14.3%
May-2018	\$201,750	0.9%	\$117,925	-28.1%	\$67,000	-53.5%	\$204,000	2.0%	325	6.6%	0.0%	9.1%
Jun-2018	\$201,000	-0.4%	\$195,000	65.4%	\$178,000	165.7%	\$201,000	-1.5%	371	14.2%	20.8%	14.9%
Jul-2018	\$213,000	6.0%	\$142,750	-26.8%	\$177,500	-0.3%	\$215,000	7.0%	296	-20.2%	4.2%	19.3%
Aug-2018	\$212,000	-0.5%	\$176,750	23.8%	\$177,500	0.0%	\$212,500	-1.2%	321	8.4%	9.6%	15.8%
Sep-2018	\$219,000	3.3%	\$181,000	2.4%	\$188,000	5.9%	\$220,000	3.5%	242	-24.6%	-11.0%	14.7%
Oct-2018	\$207,250	-5.4%	\$180,000	-0.6%	\$98,000	-47.9%	\$207,500	-5.7%	294	21.5%	-2.6%	18.8%