



**RATE:**

- \$5.50 / SF

**SIZE:**

- 2.51 Acres
- 109,223 SF

**ZONING:**

- I-1 Light Industrial

**FEATURES:**

- I-29 visibility and easy access
- Pipeline Easement
- Neighboring businesses include RDO Equipment, Butler Machinery, Sonifi Solutions, Premier Bankcard, Autoland.



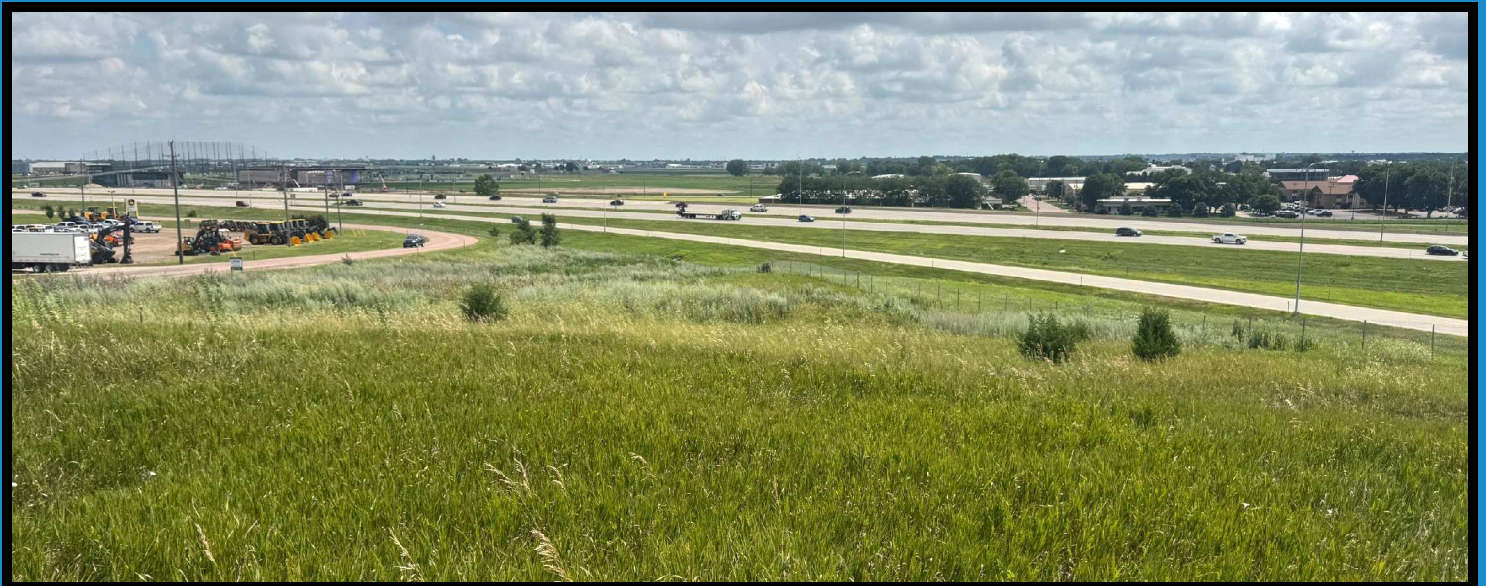
Ron Nelson  
C: 605-728-7600  
E: Ron@Ncommercial.com



[www.Ncommercial.com](http://www.Ncommercial.com)

Nicole Daggett  
C: 605-971-6706  
E: Nicole@Ncommercial.com





Ron Nelson  
C: 605-728-7600  
E: Ron@Ncommercial.com



[www.Ncommercial.com](http://www.Ncommercial.com)

Nicole Daggett  
C: 605-971-6706  
E: Nicole@Ncommercial.com



# PIPELINE EASEMENT

MINNEHAHA COUNTY, SOUTH DAKOTA

**MAGELLAN**  
MIDSTREAM PARTNERS, L.P.

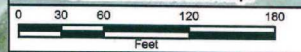
**811** Know what's below.  
Call before you dig.



**Legend**

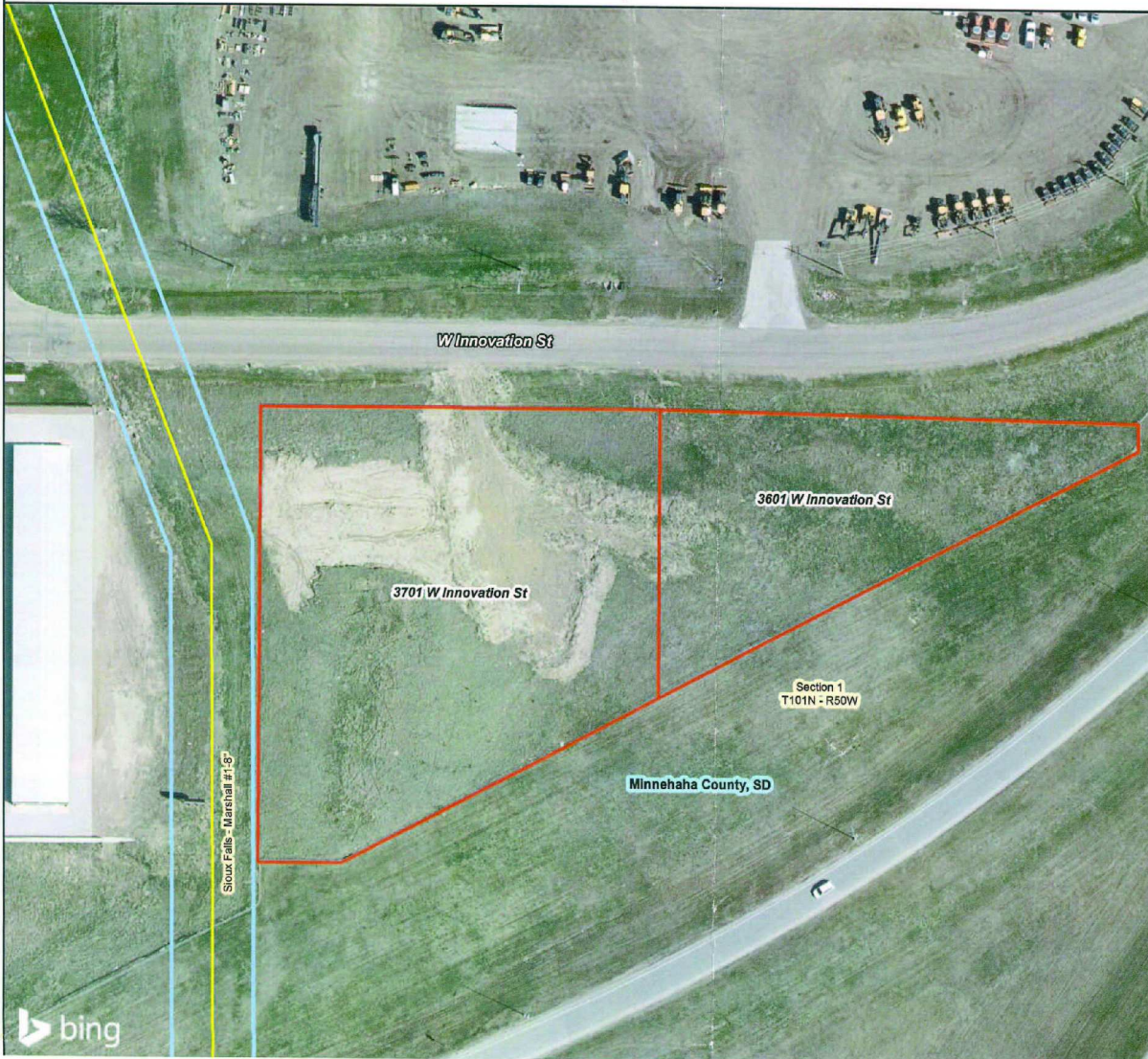
- Magellan Pipeline (Approx. Location)
- MPL 60' Easement
- Parcel Boundaries
- County
- Section

**For Actual Pipeline Location  
Contact Local Field Rep.**



This copy is not a survey and has been furnished by Magellan Pipeline Company, L.P. (Magellan) for information as to approximate locations only of any pipelines or other facilities shown thereon. Magellan disclaims any representations as to accuracy or completeness of the information depicted on this copy and makes no warranties regarding accuracy or completeness of such information depicted hereon. Actual locations of pipelines and facilities must be determined on-site through timely contact with the appropriate One Call agency - Call 811 - and coordination with Magellan. Excavation, grading, construction and/or vehicle traffic in the vicinity of the pipeline(s) and facilities shown on this copy are prohibited without written permission from Magellan or other owners of pipelines or facilities depicted hereon.

Drawn By:	Adam Kilgore
Real Estate Rep:	Cynthia Pierce (618) 574-7464
Local Field Rep:	Craig Weber (605) 201-7862
MPL Project #:	22-618
Date:	07-25-2022



Ron Nelson  
C: 605-728-7600  
E: Ron@Ncommercial.com



www.Ncommercial.com

Nicole Daggett  
C: 605-971-6706  
E: Nicole@Ncommercial.com





Ron Nelson  
C: 605-728-7600  
E: Ron@Ncommercial.com



[www.Ncommercial.com](http://www.Ncommercial.com)

Nicole Daggett  
C: 605-971-6706  
E: Nicole@Ncommercial.com