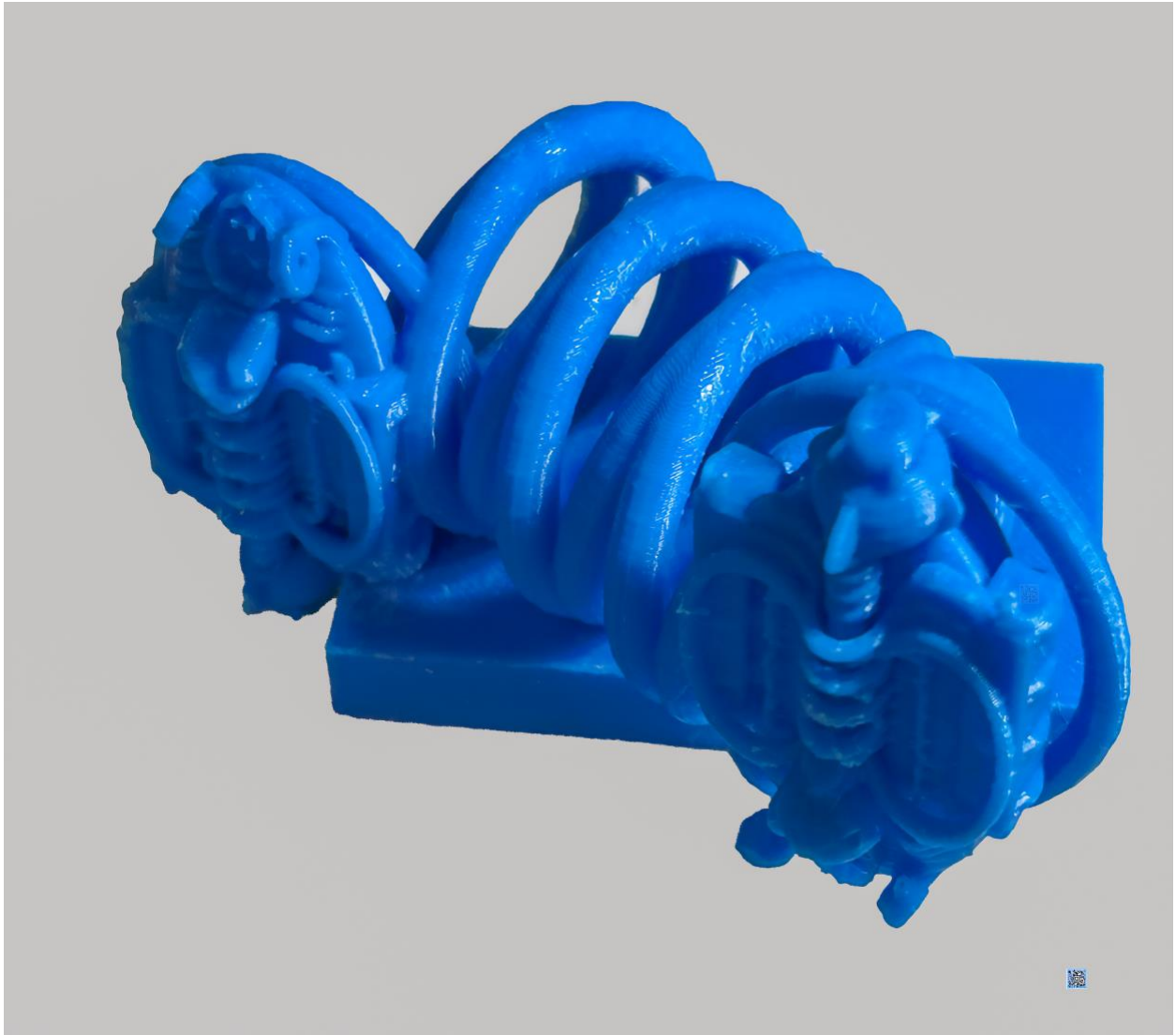


# Digital Blue\* Chromosome

By Fred Truck



Copyright © 2025 by Fred Truck

All Rights Reserved.

\*Digital Blue is a filament color used in 3D printing.



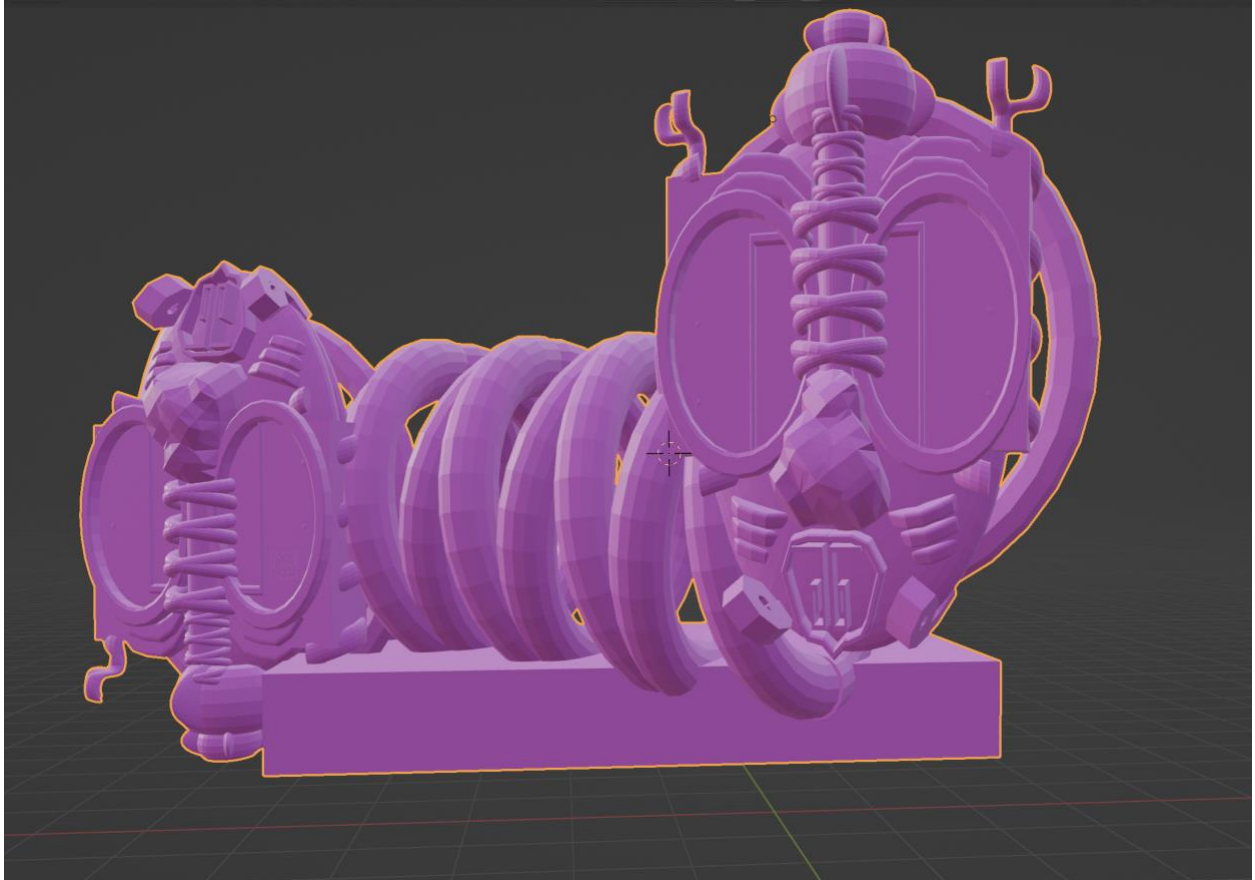
This PLA sculpture is my version of a human chromosome, complete with double helix DNA coils. I personified the DNA by giving the strands two heads, based loosely on the classic Mayan Sun God who sometimes appeared in a two-headed form. In the picture above, the back head (the one furthest from you) is in the normal position, but the front head (closest to you) is upside down. The front head is a Death's Head.



I placed my sculpture on a mirror for the photo above. Notice that the lower Chromosome is reversed in relationship to the top Chromosome.

A mirror image is a reflected duplication of an object that appears almost identical, but is reversed in the direction perpendicular to the mirror surface.—Wikipedia

## The Story...



...is of a very small 3D print (only 5.5" wide) beginning as a Blender file (above) successively transforming through a Cura slicer file and a Creality Ender 3 S1 Pro printer running Easy Digital Blue PLA filament, and then several iPhone photographs including a mirrored image...through all these formats, 2D and 3D, into your eyes and your mind. You'll transform this matter again as time passes.

This is the story of living art.