



TRAIL DISTANCE CHART

ID	TRAIL NAME	Miles
1	REVENUER'S RIDGE	1.61
2	SCHOOL POND	1.61
3	RANGER RIDGE	1.40
4	PREACHER'S HOLLOW	2.03
5	ROCK POND	2.38
6	WAPITI NATURE TRAIL	0.81
7	OUTLOOK RIDGE	1.09
8	RAVEN RIDGE OVERLOOK	0.28
9	RED TAIL OVERLOOK	0.34
10	LONE EAGLE OVERLOOK	0.34
11	LOST POND	0.49
12	HOMESTEAD	2.85
13	BLACK BEAR (TO BOUNDARY)	2.47
14	GOLDEN EAGLE	0.51
15	ROCK CANYON	0.75
16	GROUSE MOUNTAIN OVERLOOK	0.35
17	CHEESMAN RANCH	5.24
18	ELK MEADOW	2.38
19	PEAK VIEW	0.32
20	LIVERY TRAIL	0.21
21	ASPEN TRAIL	2.51
22	PEAK VIEW POND	0.80
23	STONER MILL	1.04
24	BROOK POND	0.21
25	GEER POND	1.32
26	BEAVER PONDS	0.42
27	OSBORN HOMESTEAD	1.19
28	TURKEY CABIN OVERLOOK	1.00
29	DRAGONFLY	0.20
30	NOBEL CABIN	0.85
31	MOUNTAIN LOGGER	0.58
32	DYNAMITE CABIN	0.67
33	BUFFALO ROCK	3.03
34	CAHILL POND	1.00
35	LOST STILL	0.30
36	MOONSHINE	0.88
44	FOUR MILE OVERLOOK (TO BOUNDARY)	0.83

Mueller State Park

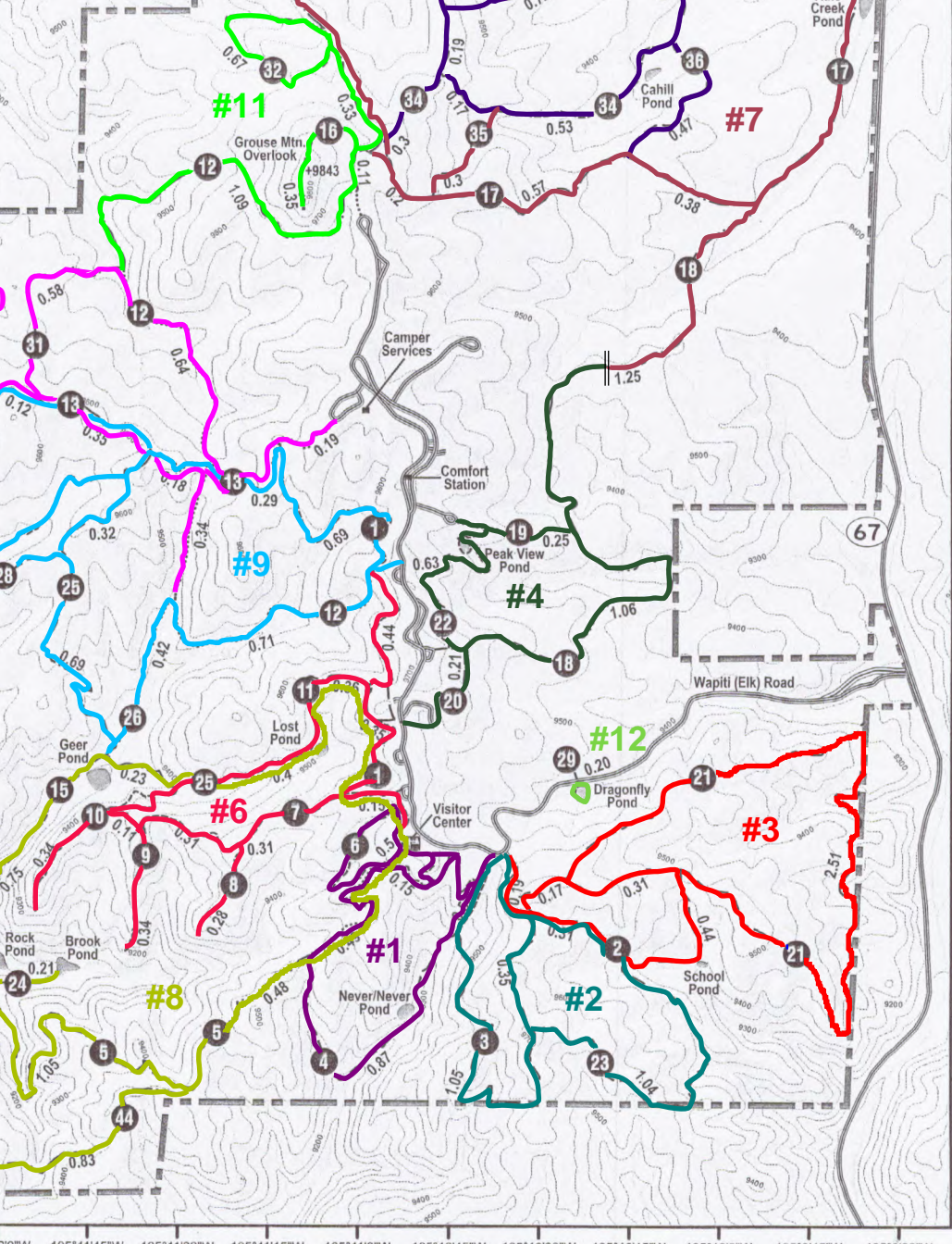
Recreational Trails

All trails are open to hiking, snowshoeing, and cross-country skiing.
 The Legend indicates trails open to biking and horseback riding.
 Pets are prohibited on all trails and in the backcountry.

105°12'0"W 105°11'45"W 105°11'30"W 105°11'15"W 105°11'0"W 105°10'45"W 105°10'30"W 105°10'15"W 105°10'0"W 105°9'45"W 105°9'30"W

LEGEND

- Foot Trail Only
- Foot & Bike
- Foot & Horse
- Foot, Horse, & Bike
- 50 Foot Contours
- Streams
- Park Boundary
- Park Roads



Mileage for Interior Trails Does Not Include Connecting Sections from Trailheads

#1 - VC 3.25	#4 - EM 4.86	#7 - GM 7.02	#10 - BB 8.02
#2 - SP 3.98	#5 - GM 6.81	#8 - VC 6.60	#11 - GM 4.43
#3 - SP 4.75	#6 - VC 6.00	#9 - Home 6.65	#12 - DF .25