

FIRST YEAR FLORIDA

Fall 2020

Class # 19441

Thursdays, 10:40 - 11:30 a.m.

Welcome! This course aims to prepare you for fulfilling years at UF. We want to connect you to the UF community, and link you to resources across the university.



Your co-instructors will lead your F'YF journey.

Krista Vaught

UF '06

kfields@law.ufl.edu

352-273-0665

 KristaEdTech


Student hours via zoom



Madison Aho



Stefanie Assakawa

 Prefer the old school syllabus (all text)?
Flip a few pages and you'll find the traditional version.

WHAT WILL YOU LEARN?

student learning outcomes

First Year Florida educates new students to maximize their learning and development. As a result of taking this course, students will:

CONNECT

with faculty, staff, and peers at the University of Florida

RESOURCES

Identify university resources and services that contribute to their personal and educational goals

REFLECT

Recognize the purpose of reflection, critical thinking, and enriching educational opportunities within and outside the classroom

WELL BEING

Evaluate the effects of personal well-being on student success and engagement

EXPECTATIONS

Recognize academic, conduct, and citizenship expectations of the University of Florida

RESPECT

Develop an awareness and respect for being a part of a diverse global community



WHAT DO I NEED TO KNOW?

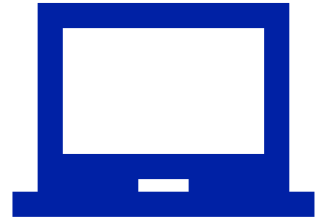


BOOKS/MATERIALS

- FYF course packet - available on Canvas
- CliftonStrengths Top 5 (\$11.99 - or we can provide a free alternative)

COURSE WEBSITE

- Canvas - log in at ufl.instructure.com (use your Gatorlink username and password)
- **Submit all assignments on Canvas**



ATTENDANCE

- Be on time!
- **Be present and engaged**
- Because our course revolves around connection and discussion, attendance is part of your grade.
- See UF policy for excused absences.
- Contact us before class if you cannot participate.

PARTICIPATION + RESPECT

We expect you to:

- Show mutual respect for your classmates + instructors
- Value diversity of ideas and insights
- Participate via video and audio as often as possible; actively listen

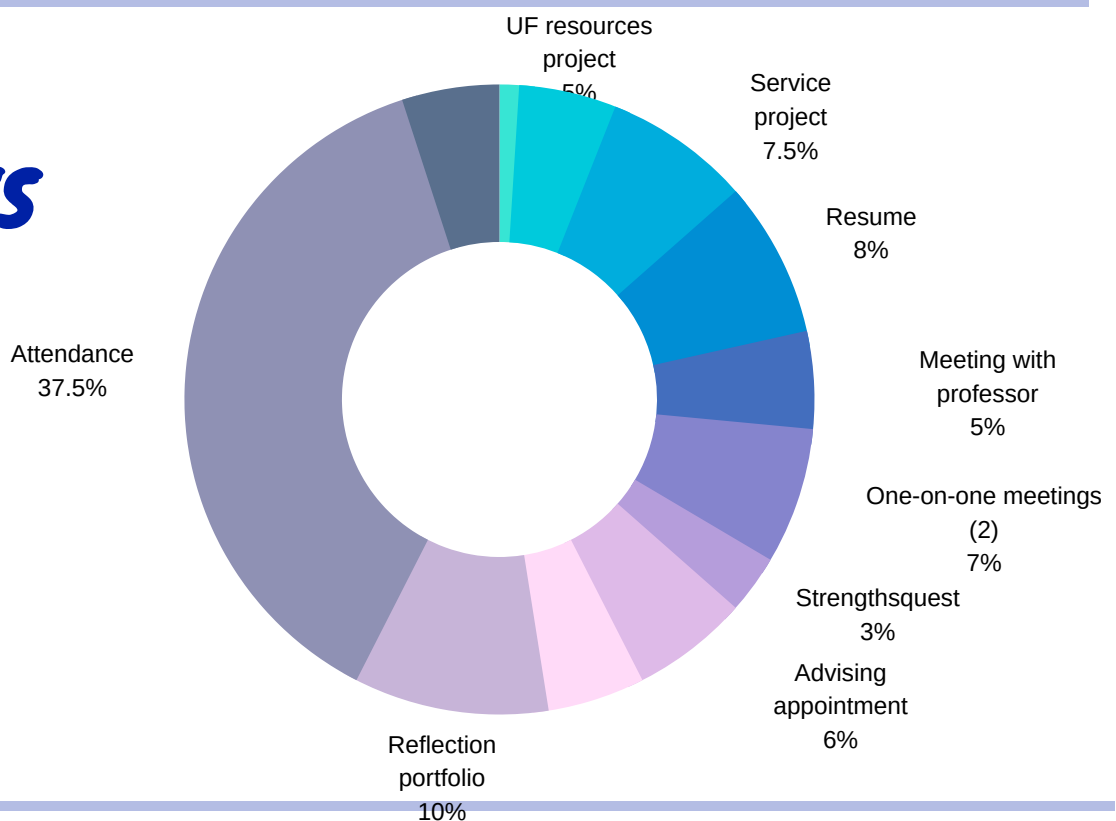


"I define connection as the energy that exists between people when they feel seen, heard, and valued; when they can give and receive without judgment; and when they derive sustenance and strength from the relationship." - Brene Brown

GRADING

This class follows the UF grading policy: check the undergraduate catalog or old school syllabus for details.

EARN POINTS



ACADEMIC INTEGRITY

As a UF student, you are expected to abide by the UF Honor Code. See the traditional version of the syllabus for more details. Basically:

- **Do not lie, cheat, or steal academic information.**
- **Do not plagiarize or use unauthorized material.**



Honor Code: We, the members of the University of Florida community, pledge to hold ourselves and our peers to the highest standards of honesty and integrity.

Pledge: On my honor, I have neither given nor received unauthorized aid in doing this assignment.



Your well-being is important! If you or a friend is in distress, please reach out to umatter@ufl.edu or 352-392-1575 (nights and weekends)! See the appendix for details.

HOW ARE WE DOING?



- We'll ask for your feedback throughout the course - we want to make sure this experience is meaningful for you, and we'll integrate your feedback throughout.
- UF and FYF will ask for feedback at the end of the semester.

ACCESSIBILITY

The University of Florida provides high-quality services to students with disabilities, and we encourage you to take advantage of them. Students with disabilities requesting accommodations should first register with the Disability Resource Center (352-392-8565; dso.ufl.edu/drc). Once registered, students will receive an accommodation letter which must be presented to the instructor when requesting accommodation.

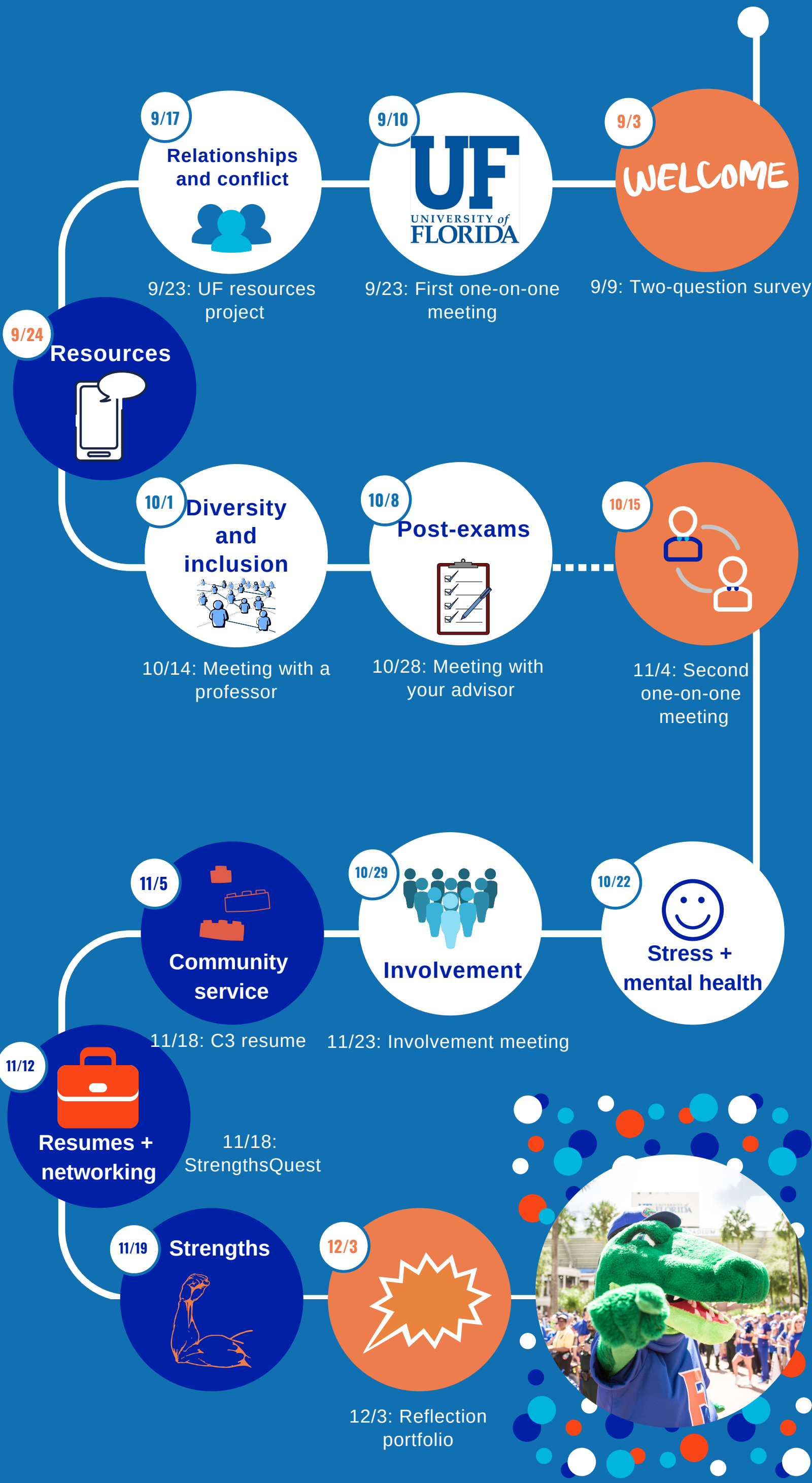
*If you've read this far, email Krista a meme/gif of how your first week of fall is going (for extra credit!)

FYF journey

*This the plan - we will make adjustments after your feedback in the first two class meetings.

Assignments are due at 11:59 p.m. All assignments have a purpose. We promise not to assign busy work!

We know challenges might come up throughout the semester, especially due to the pandemic. Please reach out to us as soon as possible before any deadline if you have concerns. Your wellbeing comes first! Please feel free to submit assignments early too.



Assignment due dates are below the bubbles
More info on Canvas



Old school syllabus version/appendix

First Year Florida is a course designed to aid students in a successful transition to the University of Florida. This course aims to help students develop the practical, social, emotional, and intellectual skills that are essential to a fulfilling four years at UF, provide a foundation for a well-rounded college experience, connect students to the University of Florida, promote engagement within and outside the classroom, and communicate university expectations.

Learning outcomes

First Year Florida educates new students to maximize their learning and development. As a result of taking this course, students will:

- Connect with faculty, staff, and peers at the University of Florida.
- Identify university resources and services that contribute to their personal and educational goals.
- Recognize the purpose of reflection, critical thinking, and enriching educational opportunities within and outside the classroom.
- Evaluate the effects of personal well-being on student success and engagement.
- Recognize the academic, conduct, and citizenship expectations of the University of Florida.
- Develop an awareness and respect for being a part of a diverse global community.

Books and materials:

First Year Florida Course Packet (will be provided in the Canvas site)

[CliftonStrengths Top 5 \(\\$11.99\)](#)

Additional (Optional) Reading: F-Book; provided at Preview or by contacting the University Alumni Association.

Technology: This class will utilize Canvas for assignment submissions in conjunction with in paper assignments. For every assignment submitted in this class, you will need to submit it via Canvas. Students in FYF are required to have and use their GatorLink account for all UF related e-mail functions.

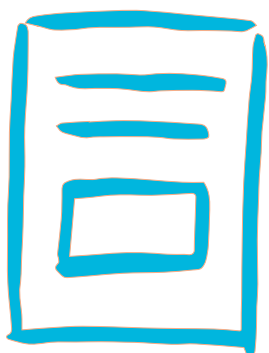
Absence/Late Policy: Attendance is a significant portion of your grade (37.5%) and is integral your success in this course. All students are expected to be present and on time for class. All absences and late arrivals must be accompanied with an excuse in order to receive participation or tardy points. Students are counted tardy after five minutes. Excused absences include: University Sponsored events, Religious Holidays with prior notice, Medical/Emotional/Family Emergencies, etc.. Requirements for class attendance and make-up exams, assignments, and other work in this course are consistent with university policies that can be found at: <https://catalog.ufl.edu/ugrad/current/regulations/info/attendance.aspx>.

Participation and respect: In this course you will be treated as an adult with respect, and we expect the same in return. Throughout the semester we will have a series of activities and discussions. Your ideas, values, and opinions are to be respected and in return you are to respect your classmates' ideas, values, and opinions. At times, we may navigate through sensitive and challenging topics. This classroom is meant to be a safe space, where we take the time to listen, be open-minded, and seek to understand.

We are strong believers that with anything in life, you get what you put into it. We strongly encourage you to take part in discussions and be both physically and mentally present in class. The work you submit should reflect your best effort, as well as the standards of the University of Florida. Cell phone and lab top usage are not permitted in class unless otherwise stated. While we seek active discussions, disruptive behavior will not be tolerated.

Participating synchronously

During class, you will be expected to participate in chats, quizzes, polls, and breakout rooms in Zoom. Your participation will influence your final grade. We encourage you to turn your camera on and to participate via video and audio as often as possible, though we realize it is not always possible based on your circumstances. If there is a class session where you know you cannot fully participate via video or audio, please reach out to one of us at the start of the session. We will discuss general expectations during our first few sessions.



Old school syllabus version/appendix

Academic Honesty

UF students are bound by The Honor Pledge which states, “We, the members of the University of Florida community, pledge to hold ourselves and our peers to the highest standards of honor and integrity by abiding by the Honor Code. On all work submitted for credit by students at the University of Florida, the following pledge is either required or implied: “On my honor, I have neither given nor received unauthorized aid in doing this assignment.” The Honor Code (sccr.dso.ufl.edu/process/student-conduct-code/) specifies a number of behaviors that are in violation of this code and the possible sanctions. Furthermore, you are obligated to report any condition that facilitates academic misconduct to appropriate personnel. If you have any questions or concerns, please consult with the instructors.

Grading policy

This course adheres to the UF grading policy for assigning grade points. Please see catalog.ufl.edu/UGRD/academic-regulations/grades-gradingpolicies/. *A grade of Incomplete (I) will not be issued under any circumstance.*

Accommodations

Students with disabilities requesting accommodations should first register with the Disability Resource Center (352-392-8565, dso.ufl.edu/drc) by providing appropriate documentation. Once registered, students will receive an accommodation letter which must be presented to the instructor when requesting accommodation. Students with disabilities should follow this procedure as early as possible in the semester.

Course evaluations

Students are expected to provide professional and respectful feedback on the quality of instruction in this course by completing course evaluations online via GatorEvals. Guidance on how to give feedback in a professional and respectful manner is available at gatorevals.aa.ufl.edu/students/. Students will be notified when the evaluation period opens, and can complete evaluations through the email they receive from GatorEvals, in their Canvas course menu under GatorEvals, or via ufl.bluera.com/ufl/. Summaries of course evaluation results are available to students at gatorevals.aa.ufl.edu/public-results/.

Health and Wellness

U Matter, We Care: If you or someone you know is in distress, please contact umatter@ufl.edu, 352-392-1575, or visit umatter.ufl.edu/ to refer or report a concern and a team member will reach out to the student in distress.

Counseling and Wellness Center: Visit counseling.ufl.edu/ or call 352-392-1575 for information on crisis services as well as non-crisis services.

Student Health Care Center: Call 352-392-1161 for 24/7 information to help you find the care you need, or visit shcc.ufl.edu/.

University Police Department: Visit police.ufl.edu/ or call 352-392-1111 (or 9-1-1 for emergencies).

UF Health Shands Emergency Room / Trauma Center: For immediate medical care call 352-733-0111 or go to the emergency room at 1515 SW Archer Road, Gainesville, FL 32608; ufhealth.org/emergency-room-trauma-center.



Old school syllabus version/appendix

Course overview

Assignment descriptions and any additional information regarding the course schedule requirements can be found under the “assignments” tab on Canvas. Learning supplements are expected to be read or watched prior to class on the date listed. Students should be prepared to discuss the given resources and respective topics in class, as doing so will contribute to participation points. Online assignments are to be submitted on Canvas no later than 11:59 p.m. on the due date. Late work is typically not accepted, though we realize this semester will bring new challenges - please contact us at any point if you are concerned about a deadline.

Assignments

See Canvas for grading rubrics and formatting requirements.

Schedule

Date	Topic	Upcoming assignments	Points	Due date
Week 1: 9/3	Welcoming you to UF!	Two-question survey	10	9/9 (questions)
Week 2: 9/10	UF	UF resources project	50	9/23
Week 3: 9/17	Dealing with relationships and conflict	First one-on-one meeting	35	9/23
Week 4: 9/24	Finding UF resources	Talk to a professor/instructor through virtual office hours	50	10/14
Week 5: 10/1	Fostering diversity and inclusion			
Week 6: 10/8	Thinking past midterms	Meet with your advisor	60	10/28
Week 7: 10/15	To be decided (by your class)	Mid-semester reflection (extra credit)	extra!	10/20
Week 8: 10/22	Managing stress and mental health	Second one-on-one meeting	35	11/4
Week 9: 10/29	Connecting and getting involved	Involvement meeting	50	11/23
Week 10: 11/5	Serving the community	StrengthsQuest	30	11/18
Week 11: 11/12	Developing professionally	C3 Resume	80	11/18
Week 12: 11/19	Leveraging your strengths			
Week 13: 11/26	Thanksgiving break	Reflection portfolio	100	12/2
Week 14: 12/3	Closing out the fall semester			
		Service project	75	
		Virtual activity fair	50	Throughout semester (pick one)
		Attendance	375	Throughout semester

Assignment descriptions

Details on each assignment are available in Canvas. All assignments should be submitted to Canvas prior to the given deadlines. Technological complications do not constitute a valid excuse - students are encouraged to work proactively so as to avoid such issues.

Extra credit

You can earn extra credit by completing semester goals (bonus on the two-question survey due 9/9) and mid-semester reflection (due 10/20).

There may be additional opportunities for extra credit throughout the semester.