



Florida | Georgia | South Dakota | North Dakota | Iowa | Nebraska | Minnesota | Texas



WE PROVIDE ELECTRICAL SOLUTIONS

BCI Integrated Solutions offers a wide range of electrical solutions. Our areas of expertise are in commercial new construction, commercial service, residential remodeling and additions as well as residential service.

WHY US

Midwest Alarm dba BCI Integrated Solutions is a certified electrical contractor and provider of specialized innovative electronic building solutions and low voltage systems. Whether you own a small commercial business, operate a large facility or even a custom-built residential home, we find the best solutions for your needs.

Our team of licensed and certified electricians is committed to providing top-quality workmanship and exceptional customer service. We use the latest tools and technologies to ensure that our work is performed efficiently and to the highest standards. We are proud to be Tesla-certified and Duke contractors.

We specialize in a variety of electrical services, including but not limited to: wiring, lighting installation, electrical panel upgrades, UPS systems, EV charger installation, surge protection, troubleshooting, and more. No matter the size or complexity of your project, we have the skills and expertise to get the job done right.



Director's Statement

Marva L. McMillen
Owner and CEO



Being born and raised in Western South Dakota on the Cheyenne River taught me a lot about resourcefulness, and making do without much. I make sure throughout our organization that all of my employees and customers are treated like family because we all depend on each other to communicate and keep people protected and safe.

I was raised knowing the value of a dollar and take to heart that our customers trust us to go above and beyond to do the right thing both in the design, installation, and service of their systems to receive as much as their budget affords.

My promise to you is that we will always be open and honest and work hard regardless of the time or the day. If ever there is an issue that is not resolved or does not meet your expectations, I am always available to all of our customers night or day.

Marva L. McMillen

Email: mmcmillen@midwestalarm.com

Why Customers Choose Us

Professional Staff

Our nationally recognized and award-winning field technicians, engineers, and support staff rank near the top of the industry for years of experience

Attention To Details

We never cut corners. That's why our company ethos is, "Do the right thing, and success follows." It's the reason we are invited to projects nationwide.

Love & Passion For What We Do

Dozens of our employees have first careers in the military, law enforcement, and emergency response. We really care about your safety and protection.

"I was raised knowing the value of a dollar and take to heart that our customers trust us to go above and beyond to do the right thing..."

About BCI

Midwest Alarm, dba BCI Integrated Solutions, is a private woman-owned business established in 1967 and is among the largest providers of Electrical, Audio Visual, Life Safety, Security, Nurse Call, and Structured Cabling solutions in the United States, proudly serving family businesses to the Fortune 500.

BCI is headquartered in Sioux Falls, South Dakota, with a Southern headquarters in Tampa, Florida, with offices in Ft. Myers, Orlando, Jacksonville, Atlanta, Dallas, Omaha, Sioux City, and Minneapolis. We have built solid relationships with prestigious and in-demand clients and contractors by providing superior service and support. We continue to grow, expanding nationwide project capabilities, with offices across Florida, Georgia, Texas, South Dakota, North Dakota, Iowa, Minnesota, and Nebraska.

**Take care of our customers,
and our customers will take care of us.**

From our inception over half a century ago, we worked with both end-users and contractors as we developed relationships with key suppliers. We expanded our solutions based on customer demand, acquiring Baytown Sound, Acme Communications, and 3D Solutions.

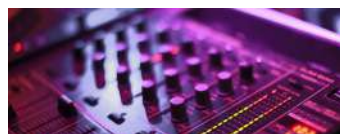
In 2004 we added key employees to focus on integrated solutions, allowing us to meet all our customers' low voltage needs. In April 2005, we changed our name to BCI Integrated Solutions to better reflect the enlarged scope of our business. By 2013, our growth and expertise would catapult us into landing the largest-ever low voltage job at MacDill Airforce Base.

In April 2021, we acquired United Security Alliance, Inc, expanding our security expertise. It was at this time we were awarded a MultiAuthority Jacksonville Security Contract valued at \$15.6 million. Our employees' experience and professionalism allow us to provide you with the service and follow-up you expect from a professional contractor. We believe in ongoing training for our employees so that we can design and install the highest quality systems utilizing the latest tools and technology. From system design to installation and service, BCI Integrated Solutions has the experience to handle any size project. Let us show you how we can deliver the systems you expect.

BCI was founded on a basic principle: Take care of our customers, and our customers will take care of us. From this basic principle, our business has naturally expanded over the years. We have had the opportunity to provide integrated systems to Fortune 500 companies, commercial businesses, educational facilities (K-12 & higher education), government buildings, healthcare facilities, hospitality locations, and large venues.

In October 2021, BCI Integrated Solutions acquired Pelican Electrical Group. Pelican and BCI have a long history of working jobs together, so the acquisition was a perfect fit. In May 2022, BCI further added to its electrical contracting capacities by acquiring JN Electric of Tampa Bay.

We are excited to offer our customers electrical and low voltage solutions creating a one-stop provider. To date, our growth has led us to house over 400 employees and expand across several states, competing for some of the largest electrical and building technology projects in the United States.



TAMPA INTERNATIONAL AIRPORT

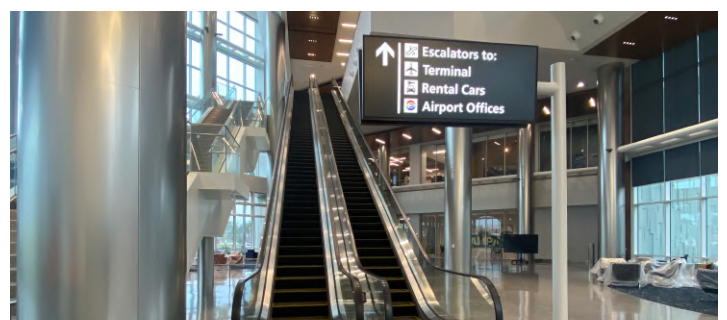
TAMPA, FL



BCI worked on a couple of large projects out at Tampa International Airport. SkyCenter One is a new, nine-story office building located in the new SkyCenter development. This building is 272,000 square feet and will include a conference center, fitness center, cafe, and access to multipurpose trails. For more information, visit skycenterone.com



Along with SkyCenter One, we also did the TPA Airside A Bridge Replacement project. This project involved disconnecting the old bridges that connect to the planes and then replacing the electrical; then hooking up the new bridges as they are installed. Over 15 bridges were replaced and installed.



PRIVATE CAR MUSEUM



BCI helped do early budgets with GC to help get the project started.

The Project Manager worked with the design team – GC-Engineer-Mechanical sub, Lighting Reps, and Switch Gear reps to start putting together the project.

We added power and lights in the old existing Winn Dixie building to give them an area to store their high-dollar cars before the project started.

We did a major demo of all conduit, wire, power devices, light fixtures, and existing electrical panels in a 100,000 Sq. Ft old K-Mart building. We also demo all old site poles and lights.

Building remodel consisted of low voltage and line voltage lights in the building. We ran all new raceway and wiring for all power devices, a/c feeds, and fire doors. BCI provided all infrastructure for all card readers, cameras, and door access security devices.

We also provided and installed site lighting for the Museum parking lot and the old Winn Dixie parking lot. During this process, we provided options for VE to bring the budget in line.

We also worked through supply issues for electrical panels by giving options and working with the engineer. This kept us on track to meet the schedule. All work was done on or before the schedule.



KIRKLAND RANCH ACADEMY OF INNOVATION

WESLEY CHAPEL, FL



BCI Integrated Solutions completed a large electrical and low-voltage new construction project for the Kirkland Ranch Academy of Innovation. Formerly known as Pasco County Technical High School, KRAI is a 180,000 gsf, 2-Story building with indoor and outdoor learning spaces such as a courtyard, career and technical education (CTE) spaces, innovation hub, flexible auditorium, multi-purpose and dining space, traditional classrooms and labs, flexible “learning communities.”

BCI provided and installed various systems and equipment throughout the facility, including:

- ✓ 1 2500A Service
- ✓ 2 2000A Services
- ✓ 23 Step down transformers
- ✓ 18 277/480V panels
- ✓ 50 120/208V panels
- ✓ 1 250KW generator
- ✓ Equipment Machines for Automotive and Diesel Labs
- ✓ 65 site light poles
- ✓ Fire Alarm
- ✓ Structured Cabling System
- ✓ Video Surveillance System
- ✓ Public Address System
- ✓ Sound Systems
- ✓ Master Clock System
- ✓ Projectors
- ✓ Access Control and Intrusion System
- ✓ Electric Vehicle Chargers
- ✓ Equipment Machines for Welding Lab
- ✓ 2 Transfer switches



BEXLEY BY NEWLAND

LAND O' LAKES, FL



BCI Integrated Solutions completed a project for the Bexley community by Newland Real Estate Group, LLC. This is a retail development project consisting of seven buildings. Each building has between 2 and 4 tenants, with various businesses, like a bicycle shop, nail salon, barber shop, health food store, ice cream shop, several restaurants, and a micro-brewery, along with a central courtyard gathering area. There are several other businesses that still need to be opened. This project has been ongoing for one and a half years and will continue as new tenants are added. The general contractor is Bay Area Building Solutions, who we have done several past projects with and hope to continue to foster a good working relationship.

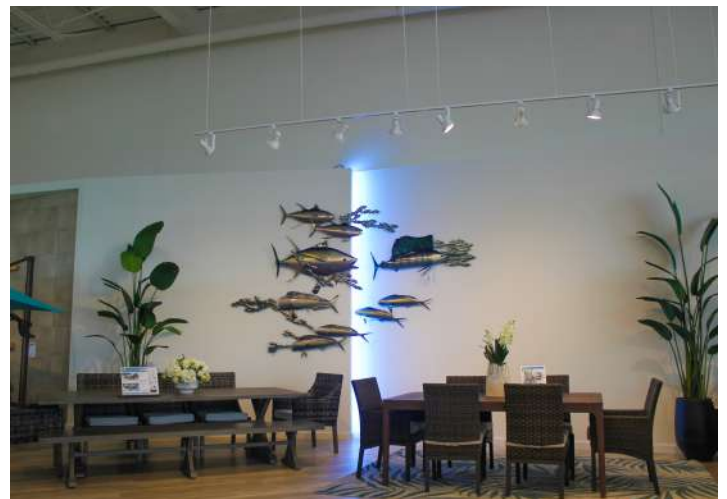


ROOMS TO GO

CLEARWATER, FL



BCI completed a project for a new Rooms to Go 50,000-square-foot store in Clearwater, Florida. This job was a ground-up project with Construction Technology Group. (GC) The service was an 800A service; transformers and subpanels were not too complicated on that end. We put as much of the raceway in the ground as we could, which helped keep the cost down. All the support brackets (Unistrut) and all thread rods had to be installed before the ceiling was painted. Then all the tracks were installed after the painting was complete. There were a lot of precise measurements needed in the ceiling to get the support brackets and the hundreds of track lights where they needed to be in order to highlight the furniture as the architect and owner wanted.

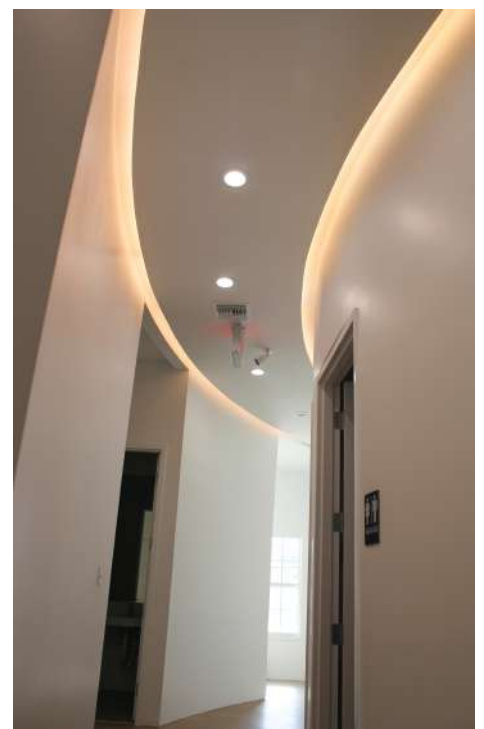
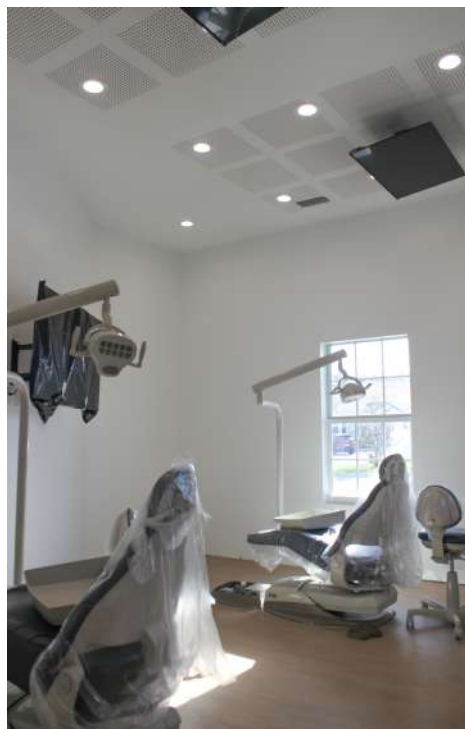
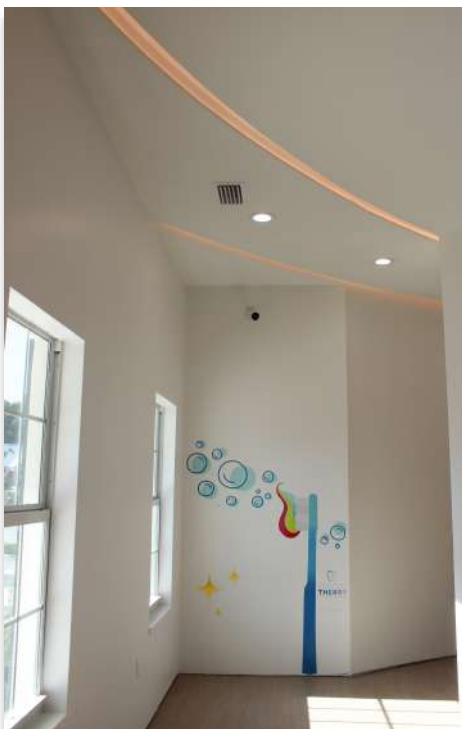


DENTAL THEORY

BRANDON, FL



BCI Integrated Solutions just finished an electrical project for a new dental clinic - Dental Theory, in Brandon, FL. The building is fed with the 400 amp, 3-phase service. BCI connected all the equipment in dental exam rooms and dental operation rooms, such as X-ray, laboratory and sterilization equipment, air compressor, and a vacuum system. Also, BCI connected 3 AC systems and a water heater and installed specialty and decorative lighting and lighting controls.



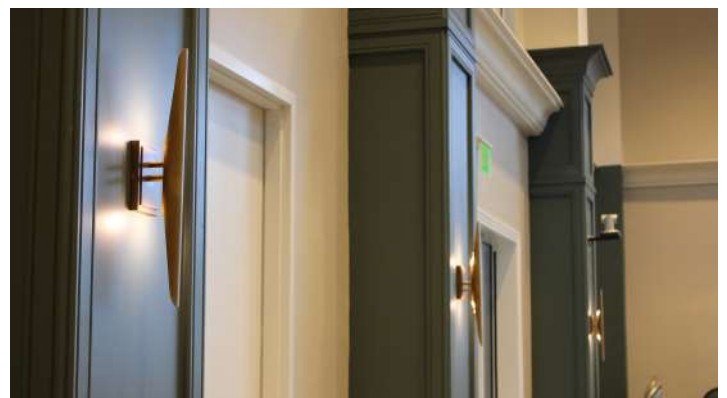
CYPRESS COVE AT HEALTHPARK

FORT MYERS, FL

BCI Integrated Solutions provided audio visual and electrical solutions for Cypress Cove in Ft Myers, FL. In the auditorium, BCI installed two 4-box constant curvature JBL line array speaker systems, subwoofers, and fill speakers to provide smooth and even coverage for the entire space. Additionally, BCI provided a 16.4' W x 8.2' H Absen LED video wall above the stage with two motors for vertical adjustments, a Samsung stage view display for a captivating and clear visual experience for the audience, BTX PTZ cameras, a recorder, streaming device, an LG multiview monitor for broadcasting live and enhanced production value of events. Auditorium lighting now consists of four light bars with various DMX LED lights for spotlights, front wash, stage wash, and stage backwash for a variety of atmospheric effects, easily managed by a user-friendly lighting touchscreen console.

In the Green Room, acoustic dampening panels ensure a controlled audio environment for high-quality video recordings, and an accompanying large Samsung display offers real-time feedback for performers. The Pub Dolphin Dining B area gets an enhanced dining atmosphere with LG displays, a Becker four-input microphone plate, BOSH ceiling-recessed music speakers, a mixing engine, and an amplifier. It's also equipped for live performances and boasts an iPad-controlled audio system for convenience.

Over at Captain's Cove, large LG wall-mounted displays connected to CATV cabling enhance the personal experience. The entire restaurant has undergone a comprehensive electrical revamp, including a new extension equipped with walk-in freezers. In tandem with installing a new electrical panel to support the kitchen's heavy-duty equipment, added security measures include access control points for improved safety. Furthermore, the fire alarm system has been updated with advanced devices. Moreover, new lighting was provided, including decorative ceiling and wall-mounted lights, offering low-voltage on/off features and zone dimming.



URBANIAK SURGERY CENTER

CLEARWATER, FL



BCI Integrated Solutions has finished the low-voltage and electrical project for the new Urbaniak Surgery Center, which has already opened its doors to patients.

BCI provided and installed various systems and equipment throughout the site, including:

- ✓ Renovation of the existing two-story building
- ✓ Two 800-amp services – one for the second-floor tenant and one for the surgery center
- ✓ Complete Silent Knight Fire Alarm system for the two-story building
- ✓ TekTone P5+ Nurse Call system
- ✓ 250kW generator set with three automatic transfer switches
- ✓ Generator docking station
- ✓ Lighting control system
- ✓ Site lighting
- ✓ Two surgery rooms
- ✓ One procedure room
- ✓ Five patient bays
- ✓ Four surgery room isolation panels
- ✓ Medical equipment connections
- ✓ Equipotential and fall of potential ground testing
- ✓ ACHA inspections



CHRISTIAN BROTHERS AUTOMOTIVE

BRADENTON, FL



Christian Brothers Automotive is a 5,500sq foot automotive service garage located in Bradenton, Florida. The company opened their first shop in 1982 in a town called Mission Bend, Texas, outside of Houston, and has since grown to be nationwide with over 250 locations. Providing a higher level of service brings them joy, and their mission is simple, “Love Your Neighbor As Yourself.”

BCI Integrated Solutions was tasked with installing the electrical for this newly constructed building. Although the wood framing was a challenge in some areas (as we are accustomed to metal), our electricians drilled through it like champs. The exterior walls are wrapped in brick for the unique look that gives it an at-home feel. It is outfitted with (9) service bays for vehicles with a hard ceiling and an attic above. BCI was two steps ahead of other trades for the entire duration of the project. Because of that, we were able to execute change orders for additional profit, granted earlier power release by the inspector, and had control of the project the entire time.



SOUTHERN OAKS

PLANT CITY, FL



Central Florida I-4 Corridor Is One Of The Fastest-Growing Industrial Markets In The U.S.

BCI Integrated Solutions Just Finished A 727,695 Sq Ft Tilt Wall Warehouse For Pattillo Construction Corporation. It Was A Shell Buildout. The Service To One Electric Room Consisted Of A 2000A Service Along With A Small House Panel For Site Lighting And Interior House Lights. BCI Was Also Asked To Do A Quick, Small Office Build On A Design-Build Status Which Was Completed On Time For The Grand Opening.



APS BELMAR

ODESSA, FL



Belmar is a pharmaceutical manufacturing facility that BCI Integrated Solutions completed the electrical installation on. It was started in early 2022 and will be completed in May 2023. The work consisted of a completely new 1200 amp high voltage electrical system with both UPS and Generator backup systems. The facility has clean rooms for the manufacture and packaging of pharmaceuticals. A large portion of the facility also includes offices, receiving, and warehousing.



BUSINESS INFORMATION

Primary NAICS Code - 238210

Duns Number - 072915820

D&B Rating - 1r3

Cage Code - 1YZ42

SIC Code - 238210

Occupational License - Hillsborough County - 54222.0000(5)

Federal Identification Number - 46-0307899

Florida Department of Revenue - 78-8017977297-2

Contracting License - EF20001805

Electrical Contracting License - EC0002551

Nicet Certification - 085008

Average Number of Employees - 400

Established in 1967

Insurance Company - Everest Indemnity Insurance Company



Ron DeSantis, Governor

Melanie S. Griffin, Secretary



STATE OF FLORIDA
DEPARTMENT OF BUSINESS AND PROFESSIONAL REGULATION

ELECTRICAL CONTRACTORS' LICENSING BOARD

THE ELECTRICAL CONTRACTOR HEREIN IS CERTIFIED UNDER THE
PROVISIONS OF CHAPTER 489, FLORIDA STATUTES

WILLIAMS, DAVID L

PELICAN ELECTRICAL GROUP INC
9501 PRINCESS PALM AVE
TAMPA FL 33619

LICENSE NUMBER: EC0002551

EXPIRATION DATE: AUGUST 31, 2024

Always verify licenses online at [MyFloridaLicense.com](https://myfloridalicense.com)



Do not alter this document in any form.

This is your license. It is unlawful for anyone other than the licensee to use this document.



Ron DeSantis, Governor

Melanie S. Griffin, Secretary



STATE OF FLORIDA
DEPARTMENT OF BUSINESS AND PROFESSIONAL REGULATION

ELECTRICAL CONTRACTORS' LICENSING BOARD

THE ALARM SYSTEM CONTRACTOR I HEREIN IS CERTIFIED UNDER THE
PROVISIONS OF CHAPTER 489, FLORIDA STATUTES

Additional Business Qualification

GORDON, MITCHELL W

BCI INTEGRATED SOLUTIONS
9501 PRINCESS PALM AVE
TAMPA FL 33619

LICENSE NUMBER: EF20001805

EXPIRATION DATE: AUGUST 31, 2024

Always verify licenses online at [MyFloridaLicense.com](https://myfloridalicense.com)



Do not alter this document in any form.

This is your license. It is unlawful for anyone other than the licensee to use this document.



WOMEN'S BUSINESS ENTERPRISE
NATIONAL COUNCIL

JOIN FORCES. SUCCEED TOGETHER.

hereby grants

National Women's Business Enterprise Certification

to

MIDWEST ALARM COMPANY DBA BCI INTEGRATED SOLUTIONS

who has successfully met WBENC's standards as a Women's Business Enterprise (WBE).
This certification affirms the business is woman-owned, operated and controlled and is valid through the date herein.

Certification Granted: August 2, 2021

Expiration Date: August 15, 2024

WBENC National Certification Number: WBE2101975

WBENC National WBE Certification was processed and validated by Women's Business Development Center - Midwest, a WBENC Regional Partner Organization.

Authorized by Emilia DiMenco, President &
CEO Women's Business Development Center -
Midwest



NAICS: 561621, 238210, 334290, 334512, 423420, 423610, 541512, 541690, 611420

UNSPSC: 46151600, 46171604, 46171619, 46171622, 46182504, 46191505, 52161500, 72151703, 92121700, 92121701, 92121702



THIS CERTIFIES THAT

MIDWEST ALARM COMPANY, INC.
dba BCI INTEGRATED SOLUTIONS



* Nationally certified by the: **NORTH CENTRAL MINORITY SUPPLIER DEVELOPMENT COUNCIL**

*NAICS Code(s): 561621; 238210; 922160

* Description of their product/services as defined by the North American Industry Classification System (NAICS)

09/14/2023

Issued Date

WS04291

Certificate Number

10/13/2024

Expiration Date


Ying McGuire
NMSDC CEO and President



Heather N. Olson

By using your password (NMSDC issued only), authorized users may log into NMSDC Central to view the entire profile: <http://nmsdc.org>

Certify, Develop, Connect, Advocate.

* MBEs certified by an Affiliate of the National Minority Supplier Development Council, Inc.®



CERTIFICATE OF LIABILITY INSURANCE

DATE (MM/DD/YYYY)

1/4/2023

THIS CERTIFICATE IS ISSUED AS A MATTER OF INFORMATION ONLY AND CONFERS NO RIGHTS UPON THE CERTIFICATE HOLDER. THIS CERTIFICATE DOES NOT AFFIRMATIVELY OR NEGATIVELY AMEND, EXTEND OR ALTER THE COVERAGE AFFORDED BY THE POLICIES BELOW. THIS CERTIFICATE OF INSURANCE DOES NOT CONSTITUTE A CONTRACT BETWEEN THE ISSUING INSURER(S), AUTHORIZED REPRESENTATIVE OR PRODUCER, AND THE CERTIFICATE HOLDER.

IMPORTANT: If the certificate holder is an **ADDITIONAL INSURED**, the policy(ies) must have **ADDITIONAL INSURED** provisions or be endorsed. If **SUBROGATION** IS **WAIVED**, subject to the terms and conditions of the policy, certain policies may require an endorsement. A statement on this certificate does not confer rights to the certificate holder in lieu of such endorsement(s).

PRODUCER Marsh McLennan Agency LLC 300 N. Cherapa PL Suite 601 Sioux Falls SD 57103	CONTACT NAME: Kathy Begtrup, CPIW, CISR PHONE (A/C, No, Ext): 605-339-3874 E-MAIL ADDRESS: kathy.begtrup@marshmma.com	FAX (A/C, No):
INSURED Midwest Alarm Co Inc dba BCI Integrated Solutions 9501 Princess Palm Avenue Tampa FL 33619	INSURER(S) AFFORDING COVERAGE INSURER A: Charter Oak Fire Insurance Company INSURER B: Amerisure Insurance Company INSURER C: Amerisure Partners Insurance Company INSURER D: Amerisure Mutual Insurance Company INSURER E: INSURER F:	NAIC # 25615 19488 11050 23396

COVERAGES**CERTIFICATE NUMBER:** 2045639860**REVISION NUMBER:**

THIS IS TO CERTIFY THAT THE POLICIES OF INSURANCE LISTED BELOW HAVE BEEN ISSUED TO THE INSURED NAMED ABOVE FOR THE POLICY PERIOD INDICATED. NOTWITHSTANDING ANY REQUIREMENT, TERM OR CONDITION OF ANY CONTRACT OR OTHER DOCUMENT WITH RESPECT TO WHICH THIS CERTIFICATE MAY BE ISSUED OR MAY PERTAIN, THE INSURANCE AFFORDED BY THE POLICIES DESCRIBED HEREIN IS SUBJECT TO ALL THE TERMS, EXCLUSIONS AND CONDITIONS OF SUCH POLICIES. LIMITS SHOWN MAY HAVE BEEN REDUCED BY PAID CLAIMS.

INSR LTR	TYPE OF INSURANCE	ADDL INSD	SUBR WVD	POLICY NUMBER	POLICY EFF (MM/DD/YYYY)	POLICY EXP (MM/DD/YYYY)	LIMITS
B	<input checked="" type="checkbox"/> COMMERCIAL GENERAL LIABILITY <input type="checkbox"/> CLAIMS-MADE <input checked="" type="checkbox"/> OCCUR <input checked="" type="checkbox"/> XCU GEN'L AGGREGATE LIMIT APPLIES PER: <input type="checkbox"/> POLICY <input checked="" type="checkbox"/> PRO-JECT <input checked="" type="checkbox"/> LOC OTHER:			GL2122407	1/1/2023	1/1/2024	EACH OCCURRENCE \$ 2,000,000 DAMAGE TO RENTED PREMISES (Ea occurrence) \$ 1,000,000 MED EXP (Any one person) \$ 10,000 PERSONAL & ADV INJURY \$ 2,000,000 GENERAL AGGREGATE \$ 4,000,000 PRODUCTS - COMP/OP AGG \$ 4,000,000 \$
C	AUTOMOBILE LIABILITY <input checked="" type="checkbox"/> ANY AUTO <input type="checkbox"/> OWNED AUTOS ONLY <input type="checkbox"/> SCHEDULED AUTOS <input type="checkbox"/> HIRED AUTOS ONLY <input type="checkbox"/> NON-OWNED AUTOS ONLY			CA2122401	1/1/2023	1/1/2024	COMBINED SINGLE LIMIT (Ea accident) \$ 1,000,000 BODILY INJURY (Per person) \$ BODILY INJURY (Per accident) \$ PROPERTY DAMAGE (Per accident) \$ FL PIP \$ 10,000
D	<input checked="" type="checkbox"/> UMBRELLA LIAB <input checked="" type="checkbox"/> OCCUR <input type="checkbox"/> EXCESS LIAB <input type="checkbox"/> CLAIMS-MADE DED <input checked="" type="checkbox"/> RETENTION \$ 0			CU2122405	1/1/2023	1/1/2024	EACH OCCURRENCE \$ 10,000,000 AGGREGATE \$ 10,000,000 \$
C	WORKERS COMPENSATION AND EMPLOYERS' LIABILITY ANY PROPRIETOR/PARTNER/EXECUTIVE OFFICER/MEMBER EXCLUDED? (Mandatory in NH) If yes, describe under DESCRIPTION OF OPERATIONS below	Y/N <input checked="" type="checkbox"/> Y <input type="checkbox"/> N	N/A	WC2122404	1/1/2023	1/1/2024	<input checked="" type="checkbox"/> PER STATUTE <input type="checkbox"/> OTH-ER E.L. EACH ACCIDENT \$ 1,000,000 E.L. DISEASE - EA EMPLOYEE \$ 1,000,000 E.L. DISEASE - POLICY LIMIT \$ 1,000,000
A	Installation Floater; \$1,000 Ded.			6305R102902	1/1/2023	1/1/2024	Job Site Limit 650,000 Stored Materials 650,000

DESCRIPTION OF OPERATIONS / LOCATIONS / VEHICLES (ACORD 101, Additional Remarks Schedule, may be attached if more space is required)

Excluded from Workers Compensation: Marva L. McMillen.

For Bid Purposes Only - DBA BCI Integrated Solutions is a Named Insured on the above mentioned policies.

CERTIFICATE HOLDER**CANCELLATION**

To Whom It May Concern

SHOULD ANY OF THE ABOVE DESCRIBED POLICIES BE CANCELLED BEFORE THE EXPIRATION DATE THEREOF, NOTICE WILL BE DELIVERED IN ACCORDANCE WITH THE POLICY PROVISIONS.

AUTHORIZED REPRESENTATIVE

© 1988-2015 ACORD CORPORATION. All rights reserved.

Request for Taxpayer Identification Number and Certification

Give Form to the
requester. Do not
send to the IRS.

► Go to www.irs.gov/FormW9 for instructions and the latest information.

Print or type. See Specific Instructions on page 3.	1 Name (as shown on your income tax return). Name is required on this line; do not leave this line blank. Midwest Alarm Company, Inc.	
	2 Business name/disregarded entity name, if different from above BCI Integrated Solutions, United Security Alliance, Pelican Electrical Group, Inc., JN Electric of Tampa Bay	
	3 Check appropriate box for federal tax classification of the person whose name is entered on line 1. Check only one of the following seven boxes. <input type="checkbox"/> Individual/sole proprietor or single-member LLC <input checked="" type="checkbox"/> C Corporation <input type="checkbox"/> S Corporation <input type="checkbox"/> Partnership <input type="checkbox"/> Trust/estate <input type="checkbox"/> Limited liability company. Enter the tax classification (C=C corporation, S=S corporation, P=Partnership) ► _____ Note: Check the appropriate box in the line above for the tax classification of the single-member owner. Do not check LLC if the LLC is classified as a single-member LLC that is disregarded from the owner unless the owner of the LLC is another LLC that is not disregarded from the owner for U.S. federal tax purposes. Otherwise, a single-member LLC that is disregarded from the owner should check the appropriate box for the tax classification of its owner. <input type="checkbox"/> Other (see instructions) ► _____	4 Exemptions (codes apply only to certain entities, not individuals; see instructions on page 3): Exempt payee code (if any) _____ Exemption from FATCA reporting code (if any) _____ <i>(Applies to accounts maintained outside the U.S.)</i>
	5 Address (number, street, and apt. or suite no.) See instructions. 9501 Princess Palm Ave.	Requester's name and address (optional)
6 City, state, and ZIP code Tampa, FL 33619		
7 List account number(s) here (optional)		

Part I Taxpayer Identification Number (TIN)

Enter your TIN in the appropriate box. The TIN provided must match the name given on line 1 to avoid backup withholding. For individuals, this is generally your social security number (SSN). However, for a resident alien, sole proprietor, or disregarded entity, see the instructions for Part I, later. For other entities, it is your employer identification number (EIN). If you do not have a number, see *How to get a TIN*, later.

Note: If the account is in more than one name, see the instructions for line 1. Also see *What Name and Number To Give the Requester* for guidelines on whose number to enter.

Social security number									
			-			-			
or									
Employer identification number									
4	6		-	0	3	0	7	8	9

Part II Certification

Under penalties of perjury, I certify that:

- The number shown on this form is my correct taxpayer identification number (or I am waiting for a number to be issued to me); and
- I am not subject to backup withholding because: (a) I am exempt from backup withholding, or (b) I have not been notified by the Internal Revenue Service (IRS) that I am subject to backup withholding as a result of a failure to report all interest or dividends, or (c) the IRS has notified me that I am no longer subject to backup withholding; and
- I am a U.S. citizen or other U.S. person (defined below); and
- The FATCA code(s) entered on this form (if any) indicating that I am exempt from FATCA reporting is correct.

Certification instructions. You must cross out item 2 above if you have been notified by the IRS that you are currently subject to backup withholding because you have failed to report all interest and dividends on your tax return. For real estate transactions, item 2 does not apply. For mortgage interest paid, acquisition or abandonment of secured property, cancellation of debt, contributions to an individual retirement arrangement (IRA), and generally, payments other than interest and dividends, you are not required to sign the certification, but you must provide your correct TIN. See the instructions for Part II, later.

Sign Here	Signature of U.S. person ► 	Date ► 2/6/2023
-----------	--	------------------------

General Instructions

Section references are to the Internal Revenue Code unless otherwise noted.

Future developments. For the latest information about developments related to Form W-9 and its instructions, such as legislation enacted after they were published, go to www.irs.gov/FormW9.

Purpose of Form

An individual or entity (Form W-9 requester) who is required to file an information return with the IRS must obtain your correct taxpayer identification number (TIN) which may be your social security number (SSN), individual taxpayer identification number (ITIN), adoption taxpayer identification number (ATIN), or employer identification number (EIN), to report on an information return the amount paid to you, or other amount reportable on an information return. Examples of information returns include, but are not limited to, the following.

- Form 1099-INT (interest earned or paid)

- Form 1099-DIV (dividends, including those from stocks or mutual funds)
 - Form 1099-MISC (various types of income, prizes, awards, or gross proceeds)
 - Form 1099-B (stock or mutual fund sales and certain other transactions by brokers)
 - Form 1099-S (proceeds from real estate transactions)
 - Form 1099-K (merchant card and third party network transactions)
 - Form 1098 (home mortgage interest), 1098-E (student loan interest), 1098-T (tuition)
 - Form 1099-C (canceled debt)
 - Form 1099-A (acquisition or abandonment of secured property)
- Use Form W-9 only if you are a U.S. person (including a resident alien), to provide your correct TIN.
- If you do not return Form W-9 to the requester with a TIN, you might be subject to backup withholding. See What is backup withholding, later.*



MARSH & MCLENNAN
AGENCY

Marsh & McLennan Agency LLC
300 Cherapa Place, Suite 601
Sioux Falls, SD 57103-2277
Office +1 605 339 3874
www.marshmma.com

March 18, 2021

To Whom It May Concern:

RE: Midwest Alarm Co Inc dba BCI Integrated Solutions

Dear Compliance,

Listed below are the Work Comp Experience Modification Rating Factors for Midwest Alarm Co Inc dba BCI Integrated Solutions:

Effective Date	Experience Mod
1/1/21	.75
1/1/20	.75
1/1/19	.90

Sincerely,

Kathy R. Begtrup, CPIW, CISR
Client Advocate
Kathy.Begtrup@marshmma.com



NATIONWIDE INTEGRATED BUILDING SYSTEMS PROVIDER

Toll Free (877) 616-2538 | bcifl.net