



NATIONWIDE INTEGRATED BUILDING SYSTEMS PROVIDER

# Director's Statement

Marva L. McMillen  
Owner and CEO



Being born and raised in Western South Dakota on the Cheyenne River taught me a lot about resourcefulness, and making do without much. I make sure throughout our organization that all of my employees and customers are treated like family because we all depend on each other to communicate and keep people protected and safe.

I was raised knowing the value of a dollar and take to heart that our customers trust us to go above and beyond to do the right thing both in the design, installation, and service of their systems to receive as much as their budget affords.

My promise to you is that we will always be open and honest and work hard regardless of the time or the day. If ever there is an issue that is not resolved or does not meet your expectations, I am always available to all of our customers night or day.

*Marva L. McMillen*

Email: [mmcmillen@midwestalarm.com](mailto:mmcmillen@midwestalarm.com)

## Why Customers Choose Us

### Professional Staff

Our nationally recognized and award-winning field technicians, engineers, and support staff rank near the top of the industry for years of experience

### Attention To Details

We never cut corners. That's why our company ethos is, "Do the right thing, and success follows." It's the reason we are invited to projects nationwide.

### Love & Passion For What We Do

Dozens of our employees have first careers in the military, law enforcement, and emergency response. We really care about your safety and protection.

*"I was raised knowing the value of a dollar and take to heart that our customers trust us to go above and beyond to do the right thing..."*

## About BCI

Midwest Alarm, dba BCI Integrated Solutions, is a private woman-owned business established in 1967 and is among the largest providers of Electrical, Audio Visual, Life Safety, Security, Nurse Call, and Structured Cabling solutions in the United States, proudly serving family businesses to the Fortune 500.

BCI is headquartered in Sioux Falls, South Dakota, with a Southern headquarters in Tampa, Florida, with offices in Ft. Myers, Orlando, Jacksonville, Atlanta, Dallas, Omaha, Sioux City, and Minneapolis. We have built solid relationships with prestigious and in-demand clients and contractors by providing superior service and support. We continue to grow, expanding nationwide project capabilities, with offices across Florida, Georgia, Texas, South Dakota, North Dakota, Iowa, Minnesota, and Nebraska.

**Take care of our customers,  
and our customers will take care of us.**

From our inception over half a century ago, we worked with both end-users and contractors as we developed relationships with key suppliers. We expanded our solutions based on customer demand, acquiring Baytown Sound, Acme Communications, and 3D Solutions.

In 2004 we added key employees to focus on integrated solutions, allowing us to meet all our customers' low voltage needs. In April 2005, we changed our name to BCI Integrated Solutions to better reflect the enlarged scope of our business. By 2013, our growth and expertise would catapult us into landing the largest-ever low voltage job at MacDill Airforce Base.

In April 2021, we acquired United Security Alliance, Inc, expanding our security expertise. It was at this time we were awarded a MultiAuthority Jacksonville Security Contract valued at \$15.6 million. Our employees' experience and professionalism allow us to provide you with the service and follow-up you expect from a professional contractor. We believe in ongoing training for our employees so that we can design and install the highest quality systems utilizing the latest tools and technology. From system design to installation and service, BCI Integrated Solutions has the experience to handle any size project. Let us show you how we can deliver the systems you expect.

BCI was founded on a basic principle: Take care of our customers, and our customers will take care of us. From this basic principle, our business has naturally expanded over the years. We have had the opportunity to provide integrated systems to Fortune 500 companies, commercial businesses, educational facilities (K-12 & higher education), government buildings, healthcare facilities, hospitality locations, and large venues.

In October 2021, BCI Integrated Solutions acquired Pelican Electrical Group. Pelican and BCI have a long history of working jobs together, so the acquisition was a perfect fit. In May 2022, BCI further added to its electrical contracting capacities by acquiring JN Electric of Tampa Bay.

We are excited to offer our customers electrical and low voltage solutions creating a one-stop provider. To date, our growth has led us to house over 400 employees and expand across several states, competing for some of the largest electrical and building technology projects in the United States.





## SOLUTIONS FOR ALL

### WE PROVIDE INTEGRATED SOLUTIONS

BCI Integrated Solutions is among the top providers of Electrical, Audiovisual, Fire Alarm, Security, and Structured Cabling solutions in the United States. Whether you own a small commercial business or operate a large facility, we find the best solutions for your business needs.

**ELECTRICAL**  
**AUDIOVISUAL**  
**SECURITY**  
**FIRE & LIFE SAFETY**  
**NETWORK & DATA CABLING**  
**HEALTHCARE COMMUNICATIONS**

Throughout our many years of experience, we have worked in almost every market, giving expert solutions to both small and large businesses. We have worked with Commercial Businesses, Educational Facilities (K-12 & Higher Ed), Government Buildings, Healthcare Facilities, Hospitality Locations, Sporting Facilities, and Large Venues.





# TAMPA INTERNATIONAL AIRPORT

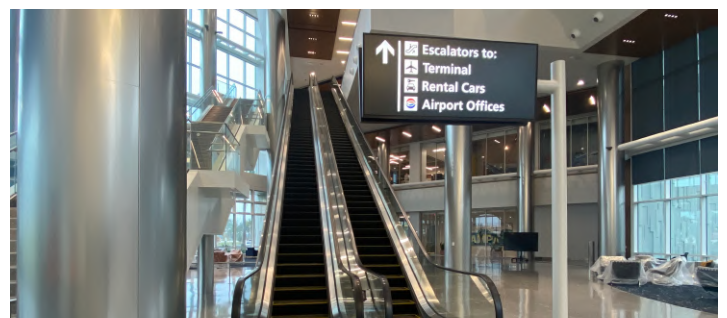
TAMPA, FL



BCI worked on a couple of large projects out at Tampa International Airport. SkyCenter One is a new, nine-story office building located in the new SkyCenter development. This building is 272,000 square feet and will include a conference center, fitness center, cafe, and access to multipurpose trails. For more information, visit [skycenterone.com](http://skycenterone.com)



Along with SkyCenter One, we also did the TPA Airside A Bridge Replacement project. This project involved disconnecting the old bridges that connect to the planes and then replacing the electrical; then hooking up the new bridges as they are installed. Over 15 bridges were replaced and installed.





# ANDRETTI INDOOR KARTING & GAMES

ORLANDO, FL

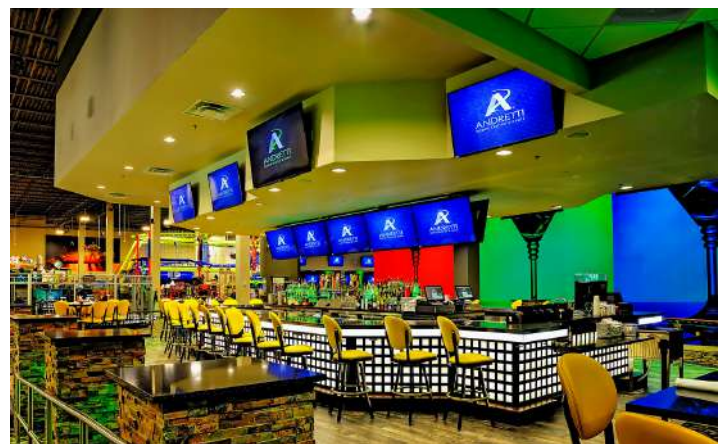


BCI Integrated Solutions contracted directly with Andretti Indoor Karting & Games Orlando to provide them with the high-end audio visual, security, and monitoring systems they needed to make their business a lasting success.

Andretti Indoor Karting & Games Orlando's ambition inspired us to install some of our most impressive solutions to serve their needs:

- Security systems, including camera installation, video management, and access control systems;
- Audiovisual television and wiring installation, including an increasingly popular "2x4 video wall" for the Andretti Grill and television installation throughout the facility;
- Fire alarm and wifi system installation on the racing tracks and throughout Andretti Orlando;
- Data management, including network installation, data center buildout, and cabling.

BCI performs its design process for every technology solution in-house, allowing us to easily coordinate our technology to Andretti Karting's specifications.





## FANATICS, INC.



Over the past few months, BCI has been installing access control and CCTV in several Fanatics warehouses around the US. We started with their new location in Aberdeen, MD.

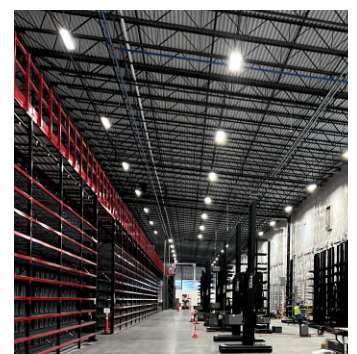
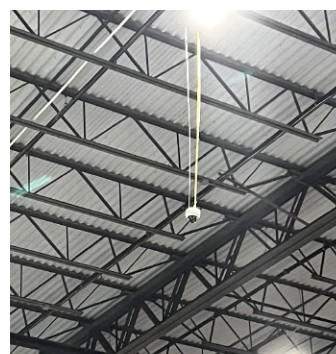
Fanatics, Inc. is an online manufacturer and retailer of licensed sportswear, sports collectibles, NFTs, trading cards, and sports merchandise, as well as sports betting and iGaming.

A team of technicians braved the cold Maryland snow to install 20 outdoor cameras. After moving inside, they installed the remaining 50 Costar cameras. On the inside of the building, we installed 40 access control doors using Lenel Products. BCI Techs teamed up with technicians from Midwest to install a DMP intrusion system on Ninety roll-up doors and close to one hundred motion detectors.

We are currently working on two more Fanatics locations simultaneously, but much closer to home. In Miami, a couple of our technicians have been diligently working on running data drops and installing fifty Costar cameras thirty-five feet in the air. We had another team of technicians working on switching thirty-five doors from an old Sonitrol access control system to Lenel.

In Jacksonville, at Fanatics world headquarters, we have run several miles of fiber optic cable to connect their many IDF cabinets. We are also running several miles of cat cable and installing thirty-five Costar security cameras.

After the holiday season, our technicians will be venturing to the Fanatics location in Las Vegas, NV, to replace their current Bosh access control system with a new Lenel system that will integrate with the rest of the properties.





# JETBLUE UNIVERSITY

ORLANDO INTERNATIONAL AIRPORT, FL



This site consists of eight reading rooms, which contain a wireless presentation system, a large LED monitor, and AV connections for collaboration.

Each room has the ability to become one or two meeting spaces that include a projection system complete with a motorized screen, audio conferencing, distributed sound system, shading and lighting control, as well as a wireless touch panel programmed to control these systems.

The Great Room (see photos above) for this facility is used as a multi-purpose space. It includes a video matrix for sending any video input to any of the 30 large LCD monitors in the room, a distributed sound system complete with wireless microphones. This system is also controlled via a wired and wireless touch panel.

BCI Integrated Solutions managed the access control installation for 250 doors throughout the facility as well as the video intercom system. We also managed the installation of 50 surveillance cameras for the facility. BCI provided all of the structured cabling for the voice, video, and data systems throughout the entire facility, including the 250 hotel rooms.

BCI Integrated Solutions also designed and installed the facility-wide DAS (distributed Antenna System) and CATV system for over 250 rooms.





# CARDINAL LG

OCALA, FL



BCI Integrated Solutions finished a large new construction project for the new Cardinal Glass Technology Center in Ocala, Florida.

BCI provided engineering, installation, programming, and testing for a variety of systems throughout the facility, including:

## → Audio Visual System:

- Direct-view LED Video Wall
- 86" commercial-grade interactive monitor
- 100" commercial-grade monitor
- Web conferencing equipment: wall-mounted pan tilt zoom (PTZ) camera, overhead microphone system, ceiling recessed speakers
- Wireless presentation devices
- Wall-mounted touch panels

## → CCTV:

- 25 Costar Cameras
- 6 Fisheye 360-degree Cameras complete with advanced analytics throughout the facility

## → HVAC Controls:

- Spyder BACnet Controls
- Thermostats/Controls wiring
- Temperature Pressure Sensors
- Humidity Sensors
- Programming for complete building automation

## → Access Control:

- Airphone Video Entry System
- Honeywell Niagara Access Control
- Access Control HVAC integration

## → PA System:

- Valcom Paging System

## → Voice Data:

- Panduit Solution / Fiber / Structured Cabling

## → Fire Alarm:

- Silent Knight Fire Alarm System



# KPMG

ORLANDO, FL



BCI Integrated Solutions provided and installed the Structured Cabling, Access Control, CCTV, and Code Blue and Intercom Systems for the Big Four Accounting firm KPMG's Lakehouse learning and development center in the Lake Nona community of Orlando, Florida.

Spread across a 55-acre campus adjacent to Orlando International Airport, the learning center includes 800 single occupancy guest rooms, 90 "learning and innovation spaces," a 1,000-seat assembly hall, and an Ignition Center, for professional and clients meeting. The campus also offers guests multiple dining areas, a social venue, and a 15,000 square foot fitness center.

There are over 12,000 copper stations with three million feet of Category 6A cable for data, AV, exercise equipment, point of sale locations, WAPS and Security. Additionally, there are over 3 thousand strands of multimode and single-mode fiber across 38 internal IDF rooms and 4 remote locations on the campus.

BCI also provided a Salto access control system to integrate into the hotel wireless lock system and an Axis/Exacq CCTV monitoring system with 280 cameras across the campus. There were also 13 Code Blue Emergency call stations installed, Stentofon internal intercoms for door access, as well as lift arm gates at each vehicle entrance and exit.





## BROWN & BROWN

DAYTONA BEACH, FL



BCI Integrated Solutions had the opportunity to install several systems for Brown & Brown. Brown & Brown is an eleven-story corporate office building located in Daytona Beach, Florida. They provide tailored insurance solutions and have been across the United States for more than 80 years.

We designed and installed the structured cabling, control system, data infrastructure, and security systems – which included access control, CCTV, and gates. We also installed audio visual for the conference rooms, training rooms, and all board rooms and chairman rooms.



# FOUR SEASONS RESORT

ORLANDO, FL



BCI Integrated Solutions was contracted to provide a Fire Alarm System, Voice/ Data Structured Cabling, Access Control System, and Video Surveillance for the new construction of the Four Seasons Resort, part of Walt Disney Resorts in Orlando, FL.

The luxury resort hotel features several food and beverage venues, meeting and banquet facilities, a fitness center with a tennis facility and full-service luxury spa, recreational activity centers for children, extensive swimming pools, retail shops, and more.

BCI worked within the facility to ensure the best quality possible. This included adding in media converters to ensure CCTV would transfer data efficiently in both the elevators and throughout the hotel.

BCI provided and installed both access control and video surveillance in areas such as the tennis court, retail stores, and the Osprey Ridge Club Center





# DAVIS CONFERENCE CENTER

TAMPA, FL



BCI Integrated Solutions was contracted to provide and install various AV projects from complete room design and installation to upgrades of existing conference rooms, including their flagship conference space, The Corona Room.

This is one of many projects we are involved in on the many buildings within the base. We are also working on the Joint Special Operations University.

Within the Corona Room, there is a rear projection with a mix of analog and digital video sources, as well as 32 microphones with audio and video conferencing. In the flanking buildings, there was a similar setup, with conference-style ceiling microphones connected to a video conferencing setup. The spaces also have a touch panel connected to the wall for easy and consistent control.

Through our expertise, we were able to take the existing MacDill Conference rooms and transform them into a space that was exactly what the Air Force base had wanted.





# HCC JOHN R. TRINKLE CENTER

PLANT CITY, FL



The Hillsborough Community College Plant City Trinkle Center is a 25,000-square-foot multipurpose facility available for rent by the public. The Trinkle Building offers a large, 12,000-square-foot room, six breakout rooms, and a lobby with a registration and reception desk for pre-event socials. The main Ballroom is equipped with a 20' dropdown projection screen, laser projector, controllable theatrical lighting, and video and microphone inputs positioned on the north and south walls, which enables a multitude of various events to be hosted within this meeting space.

The Center is also equipped with (6) breakout rooms, each equipped with an independent AV System, allowing them to be used as separate local presentation meeting spaces as well.



# KIRKLAND RANCH ACADEMY OF INNOVATION

WESLEY CHAPEL, FL



BCI Integrated Solutions completed a large electrical and low-voltage new construction project for the Kirkland Ranch Academy of Innovation. Formerly known as Pasco County Technical High School, KRAI is a 180,000 gsf, 2-Story building with indoor and outdoor learning spaces such as a courtyard, career and technical education (CTE) spaces, innovation hub, flexible auditorium, multi-purpose and dining space, traditional classrooms and labs, flexible “learning communities.”

BCI provided and installed various systems and equipment throughout the facility, including:

- ✓ 1 2500A Service
- ✓ 2 2000A Services
- ✓ 23 Step down transformers
- ✓ 18 277/480V panels
- ✓ 50 120/208V panels
- ✓ 1 250KW generator
- ✓ Equipment Machines for Automotive and Diesel Labs
- ✓ 65 site light poles
- ✓ Fire Alarm
- ✓ Structured Cabling System
- ✓ Video Surveillance System
- ✓ Public Address System
- ✓ Sound Systems
- ✓ Master Clock System
- ✓ Projectors
- ✓ Access Control and Intrusion System
- ✓ Electric Vehicle Chargers
- ✓ Equipment Machines for Welding Lab
- ✓ 2 Transfer switches



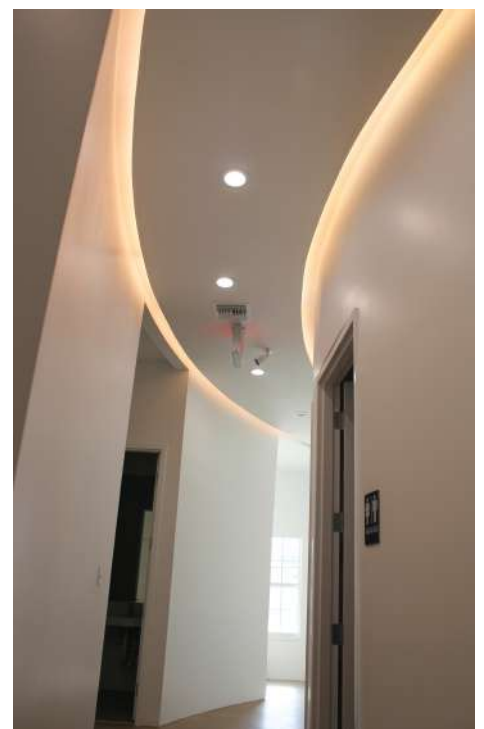
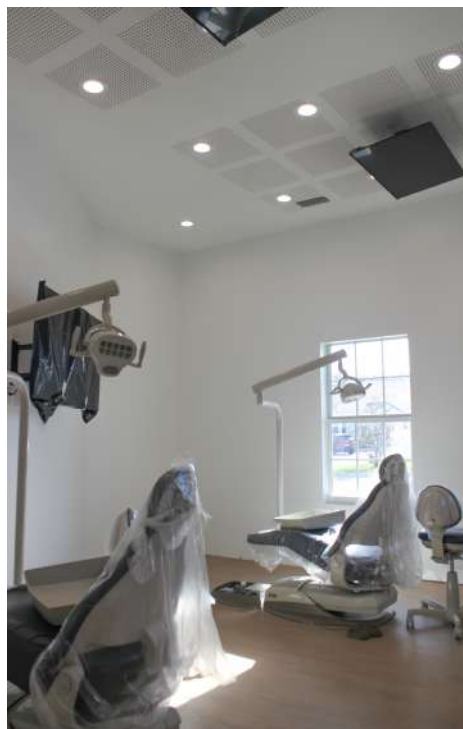
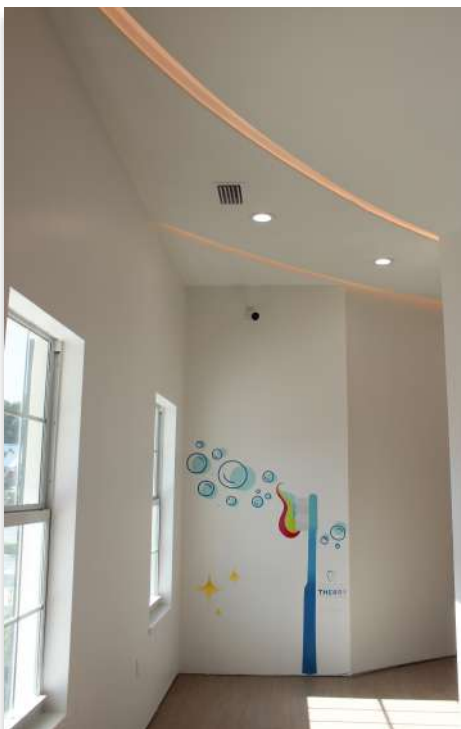


# DENTAL THEORY

BRANDON, FL



BCI Integrated Solutions just finished an electrical project for a new dental clinic - Dental Theory, in Brandon, FL. The building is fed with the 400 amp, 3-phase service. BCI connected all the equipment in dental exam rooms and dental operation rooms, such as X-ray, laboratory and sterilization equipment, air compressor, and a vacuum system. Also, BCI connected 3 AC systems and a water heater and installed specialty and decorative lighting and lighting controls.





# TORONTO BLUE JAYS - TD BALLPARK

DUNEDIN, FL



BCI Integrated Solutions took on a large project during the remodel of the Toronto Blue Jays spring training field, TD Ballpark. The ballpark has been a home for Major League Baseball spring training for more than 40 years. This renovation provided a drastic increase in capacity, nearly doubling the number of people that could attend games. This renovation required a new PA system to ensure exceptional quality of sound and the safety of staff, players, and guests.

BCI provided the life safety PA system for this facility. This system provides audio for game announcers, background music, and life safety announcements. Touch screen controls were implemented for easy user operation. The fiber was run between rack rooms to provide a solid connection while the system is powered by battery backups to ensure the life safety aspects work even in catastrophic grid failure.





## PRIVATE CAR MUSEUM



BCI helped do early budgets with GC to help get the project started.

The Project Manager worked with the design team – GC-Engineer-Mechanical sub, Lighting Reps, and Switch Gear reps to start putting together the project.

We added power and lights in the old existing Winn Dixie building to give them an area to store their high-dollar cars before the project started.

We did a major demo of all conduit, wire, power devices, light fixtures, and existing electrical panels in a 100,000 Sq. Ft old K-Mart building. We also demo all old site poles and lights.

Building remodel consisted of low voltage and line voltage lights in the building. We ran all new raceway and wiring for all power devices, a/c feeds, and fire doors. BCI provided all infrastructure for all card readers, cameras, and door access security devices.

We also provided and installed site lighting for the Museum parking lot and the old Winn Dixie parking lot. During this process, we provided options for VE to bring the budget in line.

We also worked through supply issues for electrical panels by giving options and working with the engineer. This kept us on track to meet the schedule. All work was done on or before the schedule.





# JUSTICE LEAGUE OF AMERICA 3D DARK RIDE

SIX FLAGS, TX



Lex Luthor, The Joker, and their henchmen have taken over Metropolis, and the team of Sally Corporation, Digital Projection, Severtson Film Screens, and BCI Integrated Solutions have come to save the day in this new 4D Dark Ride at Six Flags over Texas and Mid-America.

Each of the rides consists of seven 3D projection screens by Severtson Film Screens of Arizona and seven 3D Titan series projectors by Digital Projections Inc. The screens and projectors were provided and installed by BCI Integrated Solutions out of Tampa, Florida.

Riders are transported around the 4D experience in a motion-based ride car that travels along a track. At each scene, the riders take aim and shoot at objects being shown onto a 3D projection screen. At the end of the ride, everyone's scores are displayed for bragging rights.

On the left is one of the 30' x 17' 90 degree curved 3D front projection screens (there are two of these at the Texas attraction) manufactured by Severtson Film Screens. We worked closely with the design team at Sally Corporation for the placement of the screens and projectors since they are installed prior to any of the placement of the sets for these scenes.

BCI was on time and budget with this project, partnering with industry leaders like DPI and Severtson is what helps us provide world-class results for high-profile projects like these.

A special thank you to Sally Corporation for allowing us to be a part of this project. We look forward to the next project.



All photos were provided by Sally Corporation.  
JUSTICE LEAGUE and all related characters and elements are trademarks of and ©  
DC Comics. (s12)



# TAMPA BAY LIGHTNING - AMALIE ARENA

TAMPA, FL



BCI Integrated Solutions has taken on many stadiums and arenas. Amalie Arena, home of the NHL Tampa Bay Lightning needed a complete fire alarm system. We did the design and installation throughout the entire arena.

Along with the fire alarm system, we also installed temperature recording integration. Temperature recording is a line of defense against the COVID-19 virus. Temperature recording can help protect your employees and customers and ensure safety for all.





# SUN HYDRAULICS

SARASOTA, FL



Sun Hydraulics is an international leading designer and manufacturer of high-performance hydraulic cartridge valves and manifolds that needed a signage system to get information out to 3 different areas of their business. The content of the signage needed to be for both internal (employee only) and external (visitors) uses.

The three types of digital signage BCI installed for Sun Hydraulics included:

## **Visitor Signage**

Digital signage was installed in the lobby areas of their 3 buildings. This signage would greet visitors and give them an update on Sun Hydraulics, projects they were currently working on, and new product releases.

## **Employee Signage**

Employee Signage displays would be located in the common areas (i.e. cafeteria, main hallways) of their plants. This has internal information for their employees, such as upcoming blood drives, benefits, and any other internal messaging that they wish to get out to their employees.

## **Merlin System**

These monitors would be installed out on the production floor, they are tied into a PC that displays the production for each machine in the pod. Productions managers can easily see the status of a production run to see if they need to engage extra resources to finish a project or if they can wind down a resource because that machine isn't needed to keep up with production. This has helped immensely with forecasting production out on the floor and has saved Sun Hydraulics time and money.

# GALEN COLLEGE OF NURSING

GAINESVILLE & SARASOTA, FL



BCI Integrated Solutions provided Audio Visual and Control solutions for the Galen College of Nursing Gainesville and Sarasota campuses. All of the classrooms, debrief rooms, and conference rooms were outfitted with AV systems. The original spec for video and control was Crestron. Due to supply shortages, we were able to find a solution that was available and works well with FSR and AV Pro Edge AVoIP. Interactive short throw projectors were installed with a full AV over IP backbone system. Multiple encoders and decoders were used per classroom to provide a fully functional system. Also integrated into these spaces is full video conferencing for a web learning experience.

PTZ cameras and ceiling microphones with speakers were integrated to allow remote students to participate in classroom sessions. FSR touch screen controllers were used, that BCI worked with the manufacturer to have custom code written to work with AV Pro Edge.

Besides Audio Visual Solutions, BCI also provided Access Control, CCTV, and Structured Cabling.

In the past, BCI Integrated Solutions worked on the Galen College of Nursing - Miami Campus. In the meantime, a new project for the St Petersburg campus is starting.





# ALFRED A. MCKETHAN FIELD

UNIVERSITY OF FLORIDA - GAINESVILLE, FL



BCI Integrated Solutions has completed another successful installation for the University of Florida's Baseball Team. This system consisted of both audio visual and broadcast cabling for the baseball stadium, Alfred A. McKethan Field.

The audio visual system consisted of a distributed PA system with community speakers and a QSC core infrastructure, control, and amplification system.

Localized audio visual systems were provided in key areas for meeting rooms, club room, suites, pitching/batting tunnels, and more. Over 100 TVs and 200 speakers were installed to reinforce the game in public spaces.

Over 10 miles of Broadcast Cabling consisting of Triax, SMPTE, CAT6, and RG11 were installed. This broadcast cabling system allows the school's sports network Gatorvision the infrastructure necessary to film and broadcast each game. Over 20 locations were distributed around the stadium for the connection of this equipment.



# VETERANS ADMINISTRATION CLINIC

NEW PORT RICHEY, FL

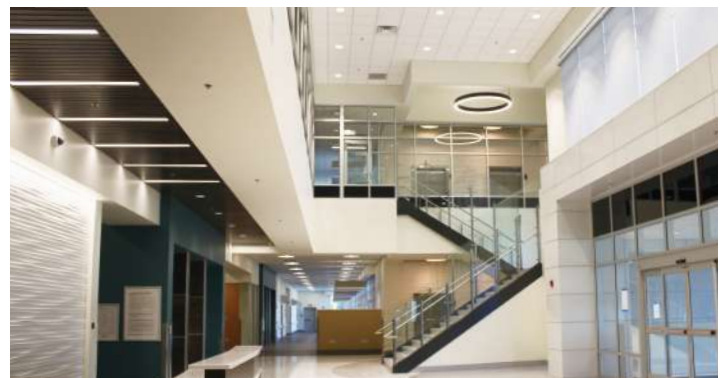


BCI has finished the project for the new Veterans Administration outpatient health clinic, which is on track for a fall 2022 opening.

A 114,000-square-foot veterans' clinic will consolidate the Port Richey Satellite Outpatient Clinic, New Port Richey Eye Clinic, New Port Richey Home-Based Primary Care, New Port Richey Mental Health Center, and the New Port Richey Dental Clinic.

We installed the following Solutions:

- Intrusion
- CCTV
- Access Control
- Emergency Call Towers
- Nurse Call
- Paging





# US COAST GUARD MARATHON STATION

MARATHON, FL



BCI Integrated Solutions just finished a major low-voltage project in Marathon Key at the Coast Guard base.

BCI provided structured cabling, CCTV, and an intercom system for the base's new housing unit. The station requested 19 Panasonic PTZ cameras throughout the facility. We tied into their existing Bogen PA system so you can hear base-wide announcements throughout the new facility. The new building needed many CAT6 cables and fiber lines to connect it to the rest of the station's infrastructure.



# DEPARTMENT OF VETERAN AFFAIRS

TAMPA, FL



In 2010 BCI Integrated Solutions worked hand in hand with the Department of Veterans Affairs new facility in St. Petersburg, FL. BCI installed state-of-the-art audio video equipment in four spaces in their new building. The spaces included a conference room, a training room, a lobby, and a break room.

In the training room, BCI installed a dual HD projection system allowing the room to be configured in an infinite number of ways. Also installed in this room is a Polycom HDX7000 for video conferencing. This allowed The Veterans Affairs to minimize operating costs making their day-to-day business more efficient. All of the audio video equipment for this room lives in the custom credenza BCI installed for the instructor to conduct training at.

One of the unique features of this installation is the room combining system BCI installed in the conference room and the training room. This feature allows the instructor to send the same audio and video feeds showing in the training room to the conference room. If a class size was too large to fit into the training room, the conference room would be able to accommodate for overflow making one large room.

In the lobby, BCI installed a 32-inch high-definition LCD display. Connected to this display is a VGA connection in a wall plate to show multiple different contents. The receptionist now has the ability to show content from her PC such as a PowerPoint presentation or a scrolling graphic. This is an efficient way to introduce your company or give pertinent information to any visitor whether new or old.





# ZOTA BEACH RESORT

LONGBOAT KEY, FL

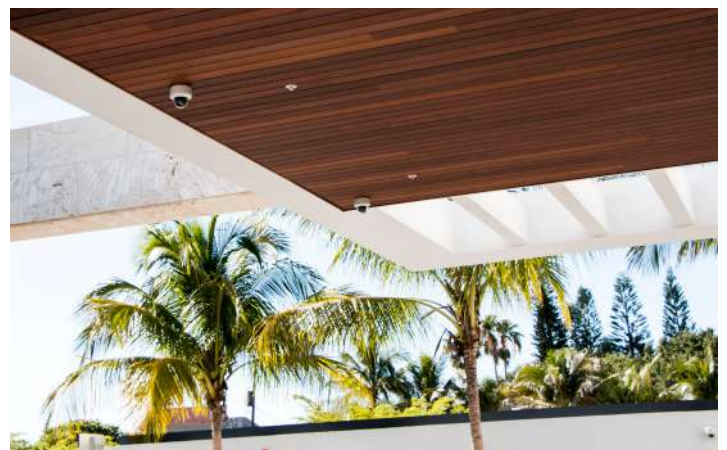


ZOTA Hotel and Resort by Hilton is a chic hotel located in Longboat Key, FL. This brand-new hotel needed a security system and audio visual to make their hotel secure and truly enjoyable. The hotel is a bit smaller, with just 187 guest rooms and four floors.

The security system consists of cameras in the main lobby, the valet area, the outside bar, the restaurant, and throughout the hotel. All the cameras are networked to a full server that is controlled by an NVR (network video recorder) to pull footage and receive notifications in real-time.

The NVR came in handy in catching culprits of recent incidents that occurred at the hotel. The audio-visual system included speakers throughout the resort, including the bar, restaurant, banquet rooms, and poolside.

The banquet hall speakers could be controlled by a bi-amp control on the wall. The poolside speakers are outdoor speakers that are placed throughout the pool area and lead to the beach boardwalk.





## BALTIMORE ORIOLES - ED SMITH STADIUM

BRADENTON, FL



Ed Smith Stadium is the spring training home of the Baltimore Orioles. BCI designed and installed a life and safety system and structured cabling for the expansion of the arena. We handled all TV distribution and background music with multiple zones for independent control. We also installed audiovisual and access control systems, maintaining a relationship with the facility.





# BAYFRONT MEDICAL CENTER

ST. PETERSBURG, FL



BCI was contracted to provide and install the Structured Cabling and all intermediate distribution frames, as well as a surveillance system for Bayfront Medical Center parking garage

Throughout the parking garage, there are a number of IP cameras where all movement can be monitored both day and night, including a license tag reader. These cameras also include stairwell surveillance at all angles giving security the ability to see everything that is going on before someone enters the facility.

Built in the heart of St. Petersburg, FL, Bayfront Health is an established hospital, with 480 beds and a full inpatient rehabilitation center. With BCI's expertise in designing a comprehensive structured cabling system, the facility can run smoothly and confidently



## DADE CITY POLICE & CITY HALL

DADE CITY, FL



The Dade City Police Department received a new building to house their 21,000-square-foot municipal complex with a 190-seat city commission chamber, new police station, and emergency operations center. BCI was contracted to provide and install multiple systems, including CCTV, Access Control, Audio Visual, Fire Alarm, and Structured Cabling.

BCI provided security systems, including CCTV and access control, including a complete photo-badging system for anyone entering the station. BCI installed the structured cabling for the building's communications, as well as the fire alarm system. In addition to safety, Dade City contracted a complete audiovisual system from projectors and monitors to a full conferencing system.





# EPICUREAN HOTEL

TAMPA, FL



Marriott's only Autograph Collection Hotel in Florida chose BCI to provide the audio-visual systems throughout the entire hotel. A two-room combined ballroom system was provided with a permanently installed projection, sound, and touch screen controls. A teaching theater was implemented for cooking shows and training to up and coming chefs. Background music was provided in each of the public spaces to help set an ambiance into the space.





# TAMPA PREPARATORY SCHOOL

TAMPA, FL



BCI Integrated Solutions worked with Tampa Prep and FSR Inc. to build on the private school's vision for tomorrow. Our technicians installed an immense amount of hardware in the school's classrooms, including Apple TVs, Epson Brightlink Projectors, and flatscreen televisions. FSR Inc. provided FLEX-LT panels that BCI installed to give Tampa Prep the flexible technology they need to control their environments.

Most of Tampa Prep's classrooms — the rest make the switch soon — use FSR Inc.'s FLEX-LT technology and distribution amplifiers to power the two projectors, two Apple TVs, and a TV monitor in each room. The school also practices BYOD, also known as Bring Your Own Device.

Without FLEX-LT, the system would be unmanageable. "That's five remotes, per teacher, per room. That's a whole lot of bad," said Chad Lewis, the school's fascinating Director of Technology.

We worked with Tampa Prep's teachers, students, faculty, parents, and other constituents to create an ideal configuration for their classrooms and help them achieve a vision that successfully marries technology and education.

We have a wealth of experience working with both charter and public schools on upgrading their low voltage audiovisual, security, fire, and other systems. Talk to us today to discuss how we can help you transform your school.





# FLORIDA AGRICULTURAL & MECHANICAL UNIVERSITY

TALLAHASSEE, FLORIDA



BCI Integrated Solutions finished an impressive audio visual system in Tallahassee at the Florida Agriculture and Mechanical University (FAMU). This project was outfitted with the latest in audio and video technology to create a spectacular theatrical hall.

This state-of-the-art system was designed specifically for the needs of the university by TSG Design Solutions, Inc. and fully integrated by BCI Integrated Solutions. This project was a picture-perfect example of an experienced integrator's ability to collaborate and facilitate. BCI worked with multiple trades to ensure the project stayed on schedule and budget. BCI chose a Meyer Sound system for its pristine sound qualities and the university's unique facility. The speakers were suspended in a center, left, right fashion for optimal performance, which gave the operator incredible flexibility over each event's individual needs.

This system has a total of 48 audio inputs, which are being controlled by a Yamaha PM5D digital mixing console. This Yamaha mixing console allows for unique presets to help eliminate significant amounts of tuning before each show. The PM5D also has a password lock to ensure all stored settings and levels cannot be tampered with by unauthorized users.

For optimal voice recognition and clarity, BCI installed a total of 12 Sennheiser wireless microphones. The projection system features a 10,000 lumen Christie projector. This projector delivers brilliant color and industry-leading clarity.

# JETBLUE PARK

FORT MYERS, FL



BCI Integrated Solutions was contracted to provide a Fire Alarm System, Voice/Data Structured Cabling, and Access Control for the new construction of JetBlue Park/ Fenway South, the spring training facility for the Boston Red Sox.

The exterior of the facility was designed very similar to Fenway Park in Boston, MA. It has the same dimensions and has some of the main features, including the Green Monster in left field. The facility features both major and minor league teams and a rehabilitation center.

BCI provided and installed a Fire Alarm System throughout the facility. BCI also designed and installed the structured cabling for the park, including the scoreboard, Monster Bar, Monster Deck, Club House levels, and more. BCI worked within the facility to ensure the best quality possible. This included adding in access control to over 45 doors within the complex to ensure an excellent level of security.





# URBANIAK SURGERY CENTER

CLEARWATER, FL



BCI Integrated Solutions has finished the low-voltage and electrical project for the new Urbaniak Surgery Center, which has already opened its doors to patients.

BCI provided and installed various systems and equipment throughout the site, including:

- ✓ Renovation of the existing two-story building
- ✓ Two 800-amp services – one for the second-floor tenant and one for the surgery center
- ✓ Complete Silent Knight Fire Alarm system for the two-story building
- ✓ TekTone P5+ Nurse Call system
- ✓ 250kW generator set with three automatic transfer switches
- ✓ Generator docking station
- ✓ Lighting control system
- ✓ Site lighting
- ✓ Two surgery rooms
- ✓ One procedure room
- ✓ Five patient bays
- ✓ Four surgery room isolation panels
- ✓ Medical equipment connections
- ✓ Equipotential and fall of potential ground testing
- ✓ ACHA inspections



# SUNCOAST CREDIT UNION

21 COUNTIES IN FLORIDA



Their bank's executive conference room needed an architectural and technological refresh. Suncoast Credit Union needed a way to present large video images and teleconference to other branches and executive staff. Suncoast Credit Union reached out to BCI Integrated Solutions to find a solution for their executive conference room. BCI proposed a design-build solution to create a user-friendly conferencing space for all executives.

Suncoast Credit Union's conference table is 30-feet deep, but the ceiling height is only 9-feet high, creating a challenge for the space because of sightlines (i.e. the person in the rear of the room is still needed to read the information on the display.) Suncoast did not want to use projection because a projection system requires periodic lamp and filter maintenance, resulting in downtime.

BCI proposed a video wall display that required little to no maintenance. The 3x3 video wall proposed featured nine 46-inches displays equaling an approximately 140-inches display.

Because of the unique V-Shape of the 30-foot long conference table, the microphones we installed needed strategic placement to pick up everyone at the table. Sound reinforcement was used with the microphones to provide the presenter's voice to the remainder of the room without feedback. This technology, called Mix-Minus, allows the person talking to be heard from the speakers furthest from them no matter who is speaking in the room.





# WARNER UNIVERSITY

LAKE WALES, FL



BCI designed and implemented several new audio video systems in Warner University's new Darby Building. This scope included thirteen classrooms, one divisible Lecture Hall, one audio recording studio, one green screen video capture studio, and one video production studio.

The classrooms were designed with the instructor as well as the student in mind. The AV system entailed multiple sources at the instructor's podium, tied to a controllable switcher, which allowed for easy operation by an easy-to-use wall-mounted touch screen control panel. Once the source was selected and routed, the signal was sent up to the ceiling-mounted 5,000 Lumen projector, which displayed the presentation to the class. Overhead in-ceiling speakers were installed to allow for even audio coverage throughout the class.

The split lecture hall entailed two individual systems with the capability of combining to make one large presentation space. The instructor's lectern incorporated multiple sources such as a laptop, desktop PC, interactive annotation overlay, and a presentation microphone.

Each side has a designated touch screen control panel which allows the instructor to change sources, adjust volume, and turn on and off the system. The video systems consist of two large 7,000-lumen projectors which are displayed onto two motorized 133" projection screens.

To ensure the audio system could handle any event or crowd BCI installed four-point source wall mounted cabinets. With the flexibility of this large space Warner can host many events and tailor the needs of each group exclusively.



# JOKER MARCHANT STADIUM

LAKELAND, FL



BCI Integrated Solutions proudly partnered with the Detroit Tigers and Joker Marchant Stadium to renovate a classic Lakeland landmark for the 2017 season.

Publix Field at Joker Marchant Stadium, named after longtime Lakeland Parks & Recreation Director Marcus “Joker” Marchant, is the oldest continually occupied spring training facility in Major League Baseball. The Detroit Tigers and their Class-A Advanced affiliate, the Lakeland Tigers, have taken today’s Publix Field every year since 1966.

Some of our installations included:

- Access control systems to suites and sensitive areas
- Security cameras and video monitoring throughout the stadium
- Structured cabling for low voltage systems and data center installation

Let BCI Integrated Solutions bring some of these great systems to your business! Reach out to us today for more information about what we can do to improve your organization’s technology.





# LOCAL UTILITY COMPANY TOC

TECHNICAL OPERATIONS CENTER, FL



BCI was approached with the task of taking an existing space and turning it into a functional Technical Operation Center (TOC) to manage the application, server, and network health throughout their entire organization. This required a system that was robust enough to handle all of this information in a 24/7 setting. This location has two video walls, a 7x2 video wall at the front of the room and a 3x2 video wall on the right side. The staff that is monitoring the status of applications, server, and network use the 7x2 video wall. This allows everyone in the room the ability to quickly view and react to the various systems that are being monitored. The 3x2 video wall is a status wall for management to use. This allows real-time statistics to be displayed for management to read and react to as they enter or leave the room.

Integrated into these video walls is video conferencing, video from every PC in the room, Cable TV feeds, and a wireless presentation system that will allow a visiting laptop to be shown on either of the two video walls when required. The video wall is controlled by a Crestron touch screen control system, each wall has its own touch panel for routing sources and controlling the audio levels in the room.





# STEPHEN O'CONNELL CENTER

UNIVERSITY OF FLORIDA - GAINESVILLE, FL



BCI Integrated Solutions was part of the University of Florida's renovation of the Stephen C. O'Connell Center, where they host their Basketball, Gymnastics, Swimming, and Volleyball events, to name a few.

The sound system for the Stephen C. O'Connell center was designed with the attendees in mind. BCI installed eight of EAW's latest point source speakers. These eight EAW QX500 speaker clusters were installed all along the bowl in order to distribute the sound equally throughout, making every seat perfect for sound. BCI provided all of the riggings for the main speaker clusters, including chain hoists, to enable the speakers to be lowered for service.

We also installed speakers beneath the scoreboard to cover the floor of the arena and not miss those courtside seats. On the upper bowl, delay speakers were installed to cover the sound beyond the main clusters, creating a connected sound system throughout the inside of the arena.

Along with speakers inside of the main arena, BCI installed perimeter speakers within the public concourse areas allowing everyone in the O'Connell center to be connected to the event inside at all times.

For the fans who are unable to attend the events at UF, we installed a broadcast cabling system for the connection of media trucks to distribute live to local and national sports networks. We used Triax cabling for cameras and fiber to each location. This cabling system is terminated in stainless steel outdoor racks, ready for connection to broadcast trucks. This system makes a seamless process for any broadcast truck to work with and get the game/event to fans across the nation.





# MANATEE COUNTY JUDICIAL CENTER

BRADENTON, FL



The Manatee County Judicial Center needed some serious technology upgrades, and BCI Integrated Solutions answered the call to provide a comprehensive technology package for the facility. We installed audiovisual, security, fire alarm, and data infrastructure systems throughout the center, bringing its monitoring and communications into modernity.

The data system required over 2,000 Cat 6 drops, almost 600 fiber connections, 28 data racks, and a variety of patch panels for Cat 6 and fiberoptic wiring.

The extensive data infrastructure is used to fuel many of the Manatee County Judicial Center's necessary systems, including 125 Panasonic cameras using a Panasonic matrix. The surveillance system integrates with the access control system spanning more than 100 doors and monitors courtrooms, detention areas, jury rooms, and the exterior.

The video surveillance system also used GE Symdec DVRs to provide more than 20 days of continuous recording capability for the Panasonic cameras.

BCI also bundled a fire alarm system with our data, surveillance, and audio visual solutions to round out the building's tech upgrade.





# ORLANDO CITY STADIUM

ORLANDO, FL



BCI Integrated Solutions was very excited to be a part of the new Orlando City Soccer Stadium in Orlando, FL. BCI worked directly with the General Contractor and the owner to install the access control system and video management system. BCI worked directly with the owner to install the suite ticketing readers, and the MLS required a replay camera system for replays viewed from the MLS offices.

The access control system consisted of 24 secured doors throughout the stadium, including the suite level areas, select entrances into the stadium, club offices, access to the back of house operations, and cash rooms. Part of this system is a badging station used to deliver and alter credentials to the access control points and three client workstations.

The Video Management Systems (VMS) consisted of 52 IP cameras placed throughout the facility, ensuring every part of the stadium could be seen at all times. Because of the high mega-pixel cameras, the VMS operator can focus on a specific point in the video while the entire capture area is still being recorded, ensuring that nothing is missed. The operator can also send parts of the video to security staff through their mobile devices, allowing an altercation to be dealt with quickly and with minimal disruption. The VMS stores large amounts of data, allowing the user to access footage both in real-time and post-event.





# SOUTHERN OAKS

PLANT CITY, FL



Central Florida I-4 Corridor Is One Of The Fastest-Growing Industrial Markets In The U.S.

BCI Integrated Solutions Just Finished A 727,695 Sq Ft Tilt Wall Warehouse For Pattillo Construction Corporation. It Was A Shell Buildout. The Service To One Electric Room Consisted Of A 2000A Service Along With A Small House Panel For Site Lighting And Interior House Lights. BCI Was Also Asked To Do A Quick, Small Office Build On A Design-Build Status Which Was Completed On Time For The Grand Opening.



# FORMAN MILLS

CHICAGO, IL



Forman Mills, Inc. is a retail chain and department store with 44 stores across the Northeast in 7 states. They are located in old big box stores that have closed, like Kmart's and Sears buildings.

Forman Mills opened a new store in Chicago that was an old Sears building, and it occupies about 90,000 square feet of the mall.

BCI did the structured cabling and installed 40 CoStar Cameras. We have just received a new order for BCI to install and monitor their Burglar system in the new store. Furthermore, Forman Mills is planning on upgrading the camera system to CoStar for 10 more stores this year.





# PINELLAS COUNTY PUBLIC SAFETY

PINELLAS COUNTY, FL



BCI Integrated Solutions was contracted to provide and install the Structured Cabling Systems (both copper and fiber.) Access Control, CCTV, Intrusion Alarm, Fire Alarm, and Audio Visual Systems for the new Pinellas County Public Safety building in Largo, Florida.

This facility houses the Pinellas County EOC, 911 Call Center, Sheriff Department, and training facility for the county.

BCI installed over one million feet of Category 6A cabling and over 20,000 feet of 24 strand single mode-fiber into 3 Data Centers, 18 Communication Rooms, 30 Data Rack, 105 Data Cabinets, and over 5000 CAT6A data jacks.

BCI provided and installed AV equipment into 19 conference rooms, 7 classrooms, 3 large conference rooms, the emergency operations center, 911 call center, production studios, and 2 large training rooms. Systems included control systems, video walls, projectors, audio systems, and video conferencing systems.

BCI provided and installed over 100 CCTV cameras, 8 NVRs (with over 60TB of storage), access control for over 150 entry points, 12 video entry door stations, and 4 emergency call boxes for the parking garage. The fire alarm system consisted of 4 nodes connecting 4 separate buildings over fiber to the main system with 423 detectors and 409 speaker strobes.





# RUMFISH GRILL AT TRADEWINDS RESORT

ST. PETE BEACH, FL



Recently Tradewinds' Resort went through the largest upgrade it has experienced in over two decades. Guy Harvey has inspired the Tradewinds to be an aquatic life themed bar and grill. This would be the main draw to the resorts, BCI and ATM Tank manufacturers were brought in to provide the technology and a massive 33,000-gallon fish tank to the space.

BCI provided a 3 x 3 video wall for guests to watch 9 simultaneous images for game night or the ability for any combination of larger images for the presentation or simply different configurations. An outdoor stage was supported with permanently installed live sound. This stage could be physically opened to enter to the interior bar and distributed throughout the entire venue. This system made use of a 32 x 32 matrix switch to distribute audio and video to five unique areas for independent or whole display and control.





# SELP AUDITORIUM

OCALA, FL



BCI Integrated Solutions partnered with Marion County's premier agricultural showplace - Southeastern Livestock Pavilion and Auditorium, which has been an Ocala landmark since 1945.

BCI worked on the 1,1000-square-foot Auditorium, which can host up to 30 round tables & 300 people. The space can also be divided into two halls with an air-wall. The north hall is 7,400 square feet & the total capacity of the south hall is 3,700 square feet.

BCI installed a 3 room VTC solution allowing all three rooms to be used as one large room or individually. The rooms allow Marion county to host company seminars and community conferences. Also, the auditorium is frequently used for weddings, receptions, family & school reunions, & training sessions.

## Products Used:

Creston, Nec, QSC, Stewart



# ST. JEROME CATHOLIC CHURCH

LARGO, FL



This unique pyramid-shaped Catholic Church located in beautiful Largo, FL received a custom-tailored audio video upgrade provided by BCI Integrated Solutions.

Working hand in hand with BCI's sales team and engineers St. Jerome addressed every need they had for their new worship space, and when it was completed the system exceeded their dreams.

Two key factors contributed to the outstanding success of this project. The first being BCI Integrated Solution's capabilities as a design-build audio video integrator. This project from the beginning was on a short schedule.

St. Jerome understood getting us involved early was key to the success of the system. BCI's engineers meet with the architect, general contractors, electrical contractors, as well as the church committee early to ensure all the pieces would fall into place. BCI designed the system according to the unique features of the worship space.

The second important factor was St. Jerome's building committee's ability to keep an open line of communication to BCI. They informed us of any concerns or questions they had and trusted our capabilities as their integrator to perform.





## BEXLEY BY NEWLAND

LAND O' LAKES, FL



BCI Integrated Solutions completed a project for the Bexley community by Newland Real Estate Group, LLC. This is a retail development project consisting of seven buildings. Each building has between 2 and 4 tenants, with various businesses, like a bicycle shop, nail salon, barber shop, health food store, ice cream shop, several restaurants, and a micro-brewery, along with a central courtyard gathering area. There are several other businesses that still need to be opened. This project has been ongoing for one and a half years and will continue as new tenants are added. The general contractor is Bay Area Building Solutions, who we have done several past projects with and hope to continue to foster a good working relationship.





# CENTURY CROSSTOWN APARTMENTS

TAMPA, FL



BCI Integrated Solutions provided Century Crosstown Apartments with a variety of our audio visual and security solutions, including video surveillance, recording, and management, as well as access control measures like gate entry and card access for all employees and residents. The camera system extends throughout the lobby, gym, leasing office, and throughout premises. The complex also opted to install a burglary alarm system.

Audio visual work involved installing both outdoor rock speakers at the pool and a full indoor background music system, a lobby monitor, an outdoor monitor, and other solutions throughout the facility.

The video surveillance and access control proved to be a great success, and the DVR (digital video recorder) has caught incidents on the complex's premises. The interconnected audio video system allows for broadcasting from inside and outside the premises.





# MONROE COUNTY SCHOOL DISTRICT

KEY WEST, FL



BCI Integrated Solutions contracted with the Monroe County School District to provide Coral Shores Key West and Marathon High School in the Florida Keys with brand new audiovisual systems.

We successfully built out all three schools during summer break in 2017, avoiding disruption during school and offering students and teachers brand new technology to get comfortable with at the start of the year.



The high school performing arts centers all received similar upgrades. Our technicians performed necessary demolition for full access to power, and electrical conduits, installed data communications and the cabling to power the audiovisual technology in each theater and the AV systems themselves. We functioned as the general contractor for this project, enlisting the help of theatrical lighting specialist and other subcontractors as well as managing all three sites throughout their project lifespans.

We installed QSC or EV speakers arrays on either side of the stages, plus QSC or other amplifier racks for excellent sound clarity and projection. Each performing arts center received a projector in the rear of the theater featuring Crestron controls systems. Additional lighting and sound control consoles were installed to give students and instructors full control of their environment. In some cases, additional speakers were also installed at the end of the stage for added presence and sound quality.

# SARASOTA ALLIANCE CHURCH

SARASOTA, FL



BCI Integrated Solutions provided a new complete audio-visual system for Sarasota Alliance Church. This included a new audio system, projection system, broadcast system, and new stage lighting.

We installed two Danley high-performance speakers, which covered the room evenly and cleanly. Along with the high-performance speakers, we also installed two high-power subwoofers for an enhanced low-frequency response. New Sennheiser wireless handheld microphones were installed to give clarity to the power of worship and the word spoken.

Along with the audio system, we also upgraded the projection system. A bright and vibrant 6,500 lumen full HD laser projector was mounted at the back wall with a long lens which provides crisp and clear images. This is beneficial for the audience to be able to see the message, regardless of where they are sitting.

The broadcast system installed was integrated to handle switching for the main projection screen, lobby displays and streaming feed. A SurgeX suppression device was installed to protect the video equipment in the rack from lightning strikes and power surges. This provides clean and aesthetically pleasing look in the control suite. Lastly, we upgraded all the stage lighting. Seventeen tunable white LED lighting fixtures were installed to front wash the stage with white light. These can be turned to both warm and cool white. A wall station was provided and programmed for basic lighting scenes. This allows the room to be controlled without the use of the computer.





# SHARON MORSE THEATER

THE VILLAGES, FL



BCI Integrated Solutions was contracted to install all Audio Visual Systems for the Sharon Morse Theater in The Villages, Florida.

The Sharon seats just over 1,000 guests in a multi-level theater offering state-of-the-art audio, visual and theatrical rigging systems to create an entertainment experience second to none. Performances spotlight a variety of artistic disciplines ranging from concerts and comedians to dance, musicals and operas. The speakers operate as a left, center, right system. Each line array cabinet measures 14ft tall from the bottom cabinet to the top. These speakers are on a chain driver system, so they can be lowered to the stage for servicing or replacement, as show riders dictate.

The projection system in this space is a 14,000-lumen projector with a screen sized at 146" H by 260" W. The screen is rigged above the stage and lowered into position when in use. The lobby of The Sharon was renovated from the old sanctuary and now has its own separate AV system with mixing console and speakers throughout the space.



# BAY CHAPEL

TAMPA, FL

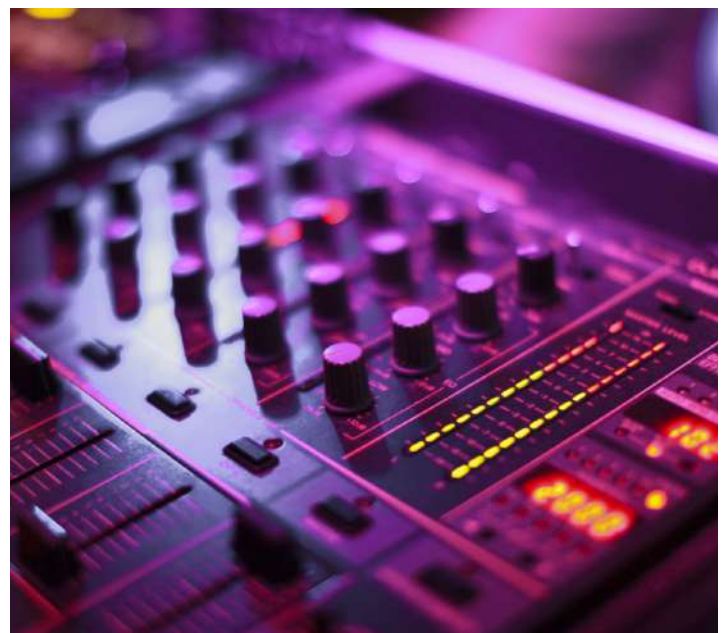


The Wharton High School Auditorium was fitted with technology to enable Bay Chapel to easily utilize the space for worship.

BCI installed a 7,000-lumen laser HD projector on the back wall with a long throw lens to project onto a large projection screen that was installed on one of the theatrical stage line sets. A wall plate was installed for the church to connect a graphics computer to, and a wireless presentation device was installed for the school to easily show presentations. An auto switcher was installed to provide technician-free operation of the system.

The Wharton HS theatrical and hose lighting system is utilized by Bay Chapel through a DMX combiner that allows two separate control systems to operate the lights. A portable audio system was designed and deployed that allows for easy setup and tear down on a Sunday morning for the church. One wire was able to be utilized to power a sub and main on each side of the stage. BCI also ran wiring from the back of the room to the stage to simplify connections.

A portable streaming system was integrated for Bay Chapel. This system allows the computer that is running graphics and an IMAG camera to be switched and overlaid. The streaming system allows users to easily switch record and stream services.





# ST. PATRICK CATHOLIC CHURCH

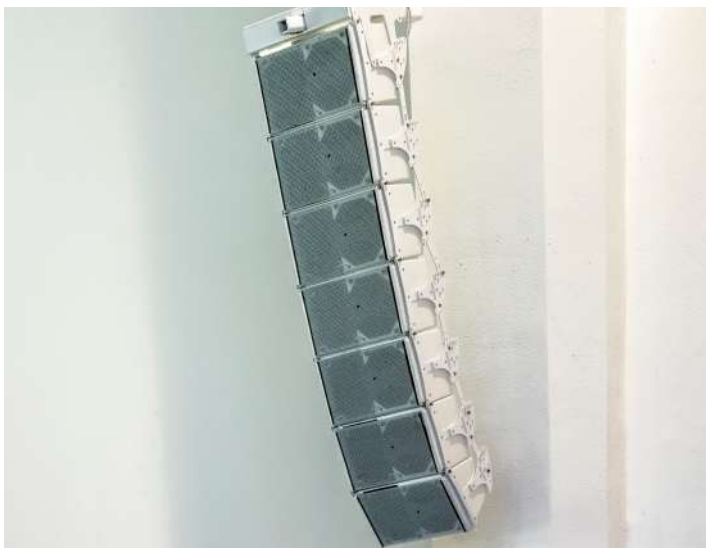
SARASOTA, FL



BCI Integrated Solutions provided a new audio system for the sanctuary of the church of St. Patrick in Sarasota, Florida.

This system consisted of a Nexo line array system and Yamaha digital mixing console. New choir microphones and wireless microphones were also upgraded. A digital snake was used in the choir area for the connection of local instruments.

BCI also provided a new audio visual system for the social hall. This consisted of a JBL point source speaker system with subwoofers. A Yamaha digital mixing console was also added with new wireless microphones. A new digital video switcher was added to allow for modern sources to be used with the existing projector and screen.



## **ANN MARIE ROGERS SWIMMING AND DIVING POOL**

UNIVERSITY OF FLORIDA - STEPHEN O'CONNELL CENTER  
GAINESVILLE, FLORIDA



BCI Integrated Solutions designed and installed a new speaker system for the Ann Marie Rogers Swimming and Diving Pool of the Stephen O'Connell Center at the University of Florida.

This system included four wide dispersion short throw speakers to cover the bleachers, two speakers to cover the center of the pool, two long-throw speakers to cover the left and right ends of the pool, and one speaker to cover the far end of the diving board area.

The speakers were mounted from the steel structure of the columns and reviewed by a structural engineer for safety. The existing catwalk speakers were safely removed and disposed of onsite. QSC amplifiers were provided to drive the new speakers and connect to the existing Q-Lan network. A single line-level XLR input and 1/8" input was provided at each end of the pool, with two more locations on the opposite side of the audience for audio connection into the system.

HDMI video extenders were then provided at three of these input locations. These extenders cabled back to the office for use with the scoreboard video system, which is provided by others.

An owner-provided iPad was programmed for volume control and routing of audio sources. These sources include the connections mentioned above, internet radio, CATV Audio, arena house sound, arena radio tuner, and arena truck audio feed.



# CLEARWATER HIGH SCHOOL

CLEARWATER, FL



Clearwater High School was recently given the green light for a much-needed auditorium renovation by the Pinellas County School Board. Included in the budget for this renovation were a new state-of-the-art sound and video system. Designed by TSG Design Solutions and installed by BCI Integrated Solutions, Clearwater High received the top audio video system in the district.

Heading up the new audio system is a 40-channel analog mixing console by Soundcraft. This mixing console allowed for all the inputs the school currently needed with room to expand. To deliver excellent crisp sound the Yamaha Nexo speaker line was chosen. The loudspeakers were arranged in a Left Right system, including (4) 15-inch speakers with a 10-inch fill speaker on each side. This configuration allowed for full coverage and high intelligibility.

The highlight of the new video system was a 10,000 lumen Christie projector. This top-of-the-line projector uses 3 chip LCD technology as well as a dual bulb system to deliver amazing image quality.

To control the video system BCI installed all the head-end equipment including motorized screen controls into the control booth located at the rear of the building. The ability to close and lock the door to the control made it easy to protect and secure the equipment.

This project came in on schedule and under budget. After BCI performed a full system training and the keys were handed over, the school was ready for their first big production.





# HYDE PARK UNITED METHODIST

TAMPA, FL



BCI Integrated Solutions has provided cutting-edge A/V sound reinforcement and presentation system for Hyde Park United Methodist Church. Our intimate knowledge of sound reinforcement for the house of worship allowed us to design and build a system that looks as good as it sounds.

Utilizing 84 channels of sound, twin acoustically-transparent projection screens, and a mixture of both live and recorded video feeds, the system can provide a medium to produce a truly moving worship service. In addition, the system can be recorded onto a digital video recorder and a 24-track digital audio recorder at an in-house audio workstation. Production cameras, computers, DV, and VCR can be recorded or played back onto two 4100 lumen projectors at XGA resolution and all controlled by an AMX controller.

- 84 channels of audio
- Left, Right, and Center channel speaker system
- Dual Video Projection
- 24-track music workstation
- Acoustically transparent screens
- Four discrete stage monitor mixes
- AMX wireless touchscreen control system
- All video up scaled to XGA





# PASCO HERNANDO STATE COLLEGE IPAC

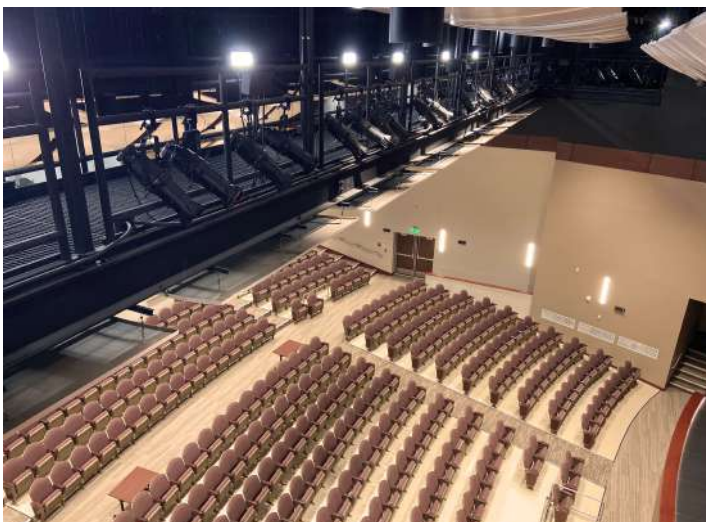
WESLEY CHAPEL, FL



BCI Integrated Solutions was tasked with providing multiple turnkey Audio/Visual Solutions for six total classrooms, one production studio, one performing arts auditorium, and one event space.

BCI provided a state-of-the-art learning experience for the students who are aspiring to work in the Performing Arts Industry, regardless of discipline –dance, drama, music, or behind the scenes (video and audio engineering/editing). BCI provided each classroom with three 75” displays for viewing throughout the classroom. A presentation switcher located in a central Owner Furnished Podium was installed. It is capable of switching between a laptop, desktop PC, and a wireless presentation device. Each classroom was further equipped with a live stream device to share the content being taught in the classroom by remote students.

BCI provided a state-of-the-art auditorium capable of holding a variety of events ranging from dramatic performances, dance recitals to symphonic concerts. This was accomplished with EV Line Arrays, a Yamaha QL5 mixing console, and Crown amplifiers. The audio was further processed through the BSS DSP. Video capabilities in the auditorium include an Extron XTP video switcher and a Digital Projections Projector setup in a rear-projection format.





# METROPOLITAN MINISTRIES

TAMPA, FL



BCI was tasked with adding and updating systems for Metropolitan Ministries.

Metropolitan Ministries needed systems installed for their new residential housing, Miracle Place. Along with the new systems, the existing Administration Headquarters needed updating as well. For both buildings, BCI installed a fire alarm system and voice data structured cabling. An access control system was installed as well.





# SARASOTA ACADEMY OF THE ARTS

SARASOTA, FL



BCI has completed Phase two of a three-phase project for the Jewish Federation/Sarasota Academy of the Arts. BCI completed Phase one in May of this year. Phase one consisted of CCTV, Access Control, and an intrusion alarm for their new building. Phase two's project was a complete remodel of their existing school building. BCI revamped the fire alarm and added access control to the school building. Phase three will kick off in January 2023. We will be adding access control and CCTV to the fence along the property's perimeter.





# CHRISTIAN BROTHERS AUTOMOTIVE

BRADENTON, FL



Christian Brothers Automotive is a 5,500sq foot automotive service garage located in Bradenton, Florida. The company opened their first shop in 1982 in a town called Mission Bend, Texas, outside of Houston, and has since grown to be nationwide with over 250 locations. Providing a higher level of service brings them joy, and their mission is simple, “Love Your Neighbor As Yourself.”

BCI Integrated Solutions was tasked with installing the electrical for this newly constructed building. Although the wood framing was a challenge in some areas (as we are accustomed to metal), our electricians drilled through it like champs. The exterior walls are wrapped in brick for the unique look that gives it an at-home feel. It is outfitted with (9) service bays for vehicles with a hard ceiling and an attic above. BCI was two steps ahead of other trades for the entire duration of the project. Because of that, we were able to execute change orders for additional profit, granted earlier power release by the inspector, and had control of the project the entire time.





## **BUSINESS INFORMATION**

**Primary NAICS Code - 238210**

**Duns Number - 072915820**

**D&B Rating - 1r3**

**Cage Code - 1YZ42**

**SIC Code - 238210**

**Occupational License - Hillsborough County - 54222.0000(5)**

**Federal Identification Number - 46-0307899**

**Florida Department of Revenue - 78-8017977297-2**

**Contracting License - EF20001805**

**Electrical Contracting License - EC0002551**

**Nicet Certification - 085008**

**Average Number of Employees - 400**

**Established in 1967**

**Insurance Company - Everest Indemnity Insurance Company**

THIS CERTIFIES THAT

**MIDWEST ALARM COMPANY, INC.**  
dba BCI INTEGRATED SOLUTIONS



\* Nationally certified by the: **NORTH CENTRAL MINORITY SUPPLIER DEVELOPMENT COUNCIL**

\*NAICS Code(s): 561621; 238210; 922160

\* Description of their product/services as defined by the North American Industry Classification System (NAICS)

09/28/2022

**Issued Date**

WS04291

**Certificate Number**

10/13/2023

**Expiration Date**

A handwritten signature in black ink, appearing to read "Ying McGuire", is positioned above the name and title of the NMSDC CEO and President.

**Ying McGuire**  
**NMSDC CEO and President**

A handwritten signature in black ink, appearing to read "Heather N. Olson", is positioned above the name of the official.

**Heather N. Olson**

By using your password (NMSDC issued only), authorized users may log into NMSDC Central to view the entire profile: <http://nmsdc.org>

*Certify, Develop, Connect, Advocate.*

\* MBEs certified by an Affiliate of the National Minority Supplier Development Council, Inc.®





WOMEN'S BUSINESS ENTERPRISE  
NATIONAL COUNCIL

JOIN FORCES. SUCCEED TOGETHER.

hereby grants

# National Women's Business Enterprise Certification

to

MIDWEST ALARM COMPANY DBA BCI INTEGRATED SOLUTIONS

who has successfully met WBENC's standards as a Women's Business Enterprise (WBE).  
This certification affirms the business is woman-owned, operated and controlled and is valid through the date herein.

Certification Granted: August 2, 2021

Expiration Date: August 15, 2023

WBENC National Certification Number: WBE2101975

WBENC National WBE Certification was processed and validated by Women's Business Development Center - Midwest, a WBENC Regional Partner Organization.

Authorized by Emilia DiMenco, President &  
CEO Women's Business Development Center -  
Midwest



NAICS: 561621, 238210, 334290, 334512, 423420, 423610, 541512, 541690, 611420

UNSPSC: 46151600, 46171604, 46171619, 46171622, 46182504, 46191505, 52161500, 72151703, 92121700, 92121701, 92121702





# CERTIFICATE OF LIABILITY INSURANCE

DATE (MM/DD/YYYY)

1/4/2023

THIS CERTIFICATE IS ISSUED AS A MATTER OF INFORMATION ONLY AND CONFERS NO RIGHTS UPON THE CERTIFICATE HOLDER. THIS CERTIFICATE DOES NOT AFFIRMATIVELY OR NEGATIVELY AMEND, EXTEND OR ALTER THE COVERAGE AFFORDED BY THE POLICIES BELOW. THIS CERTIFICATE OF INSURANCE DOES NOT CONSTITUTE A CONTRACT BETWEEN THE ISSUING INSURER(S), AUTHORIZED REPRESENTATIVE OR PRODUCER, AND THE CERTIFICATE HOLDER.

**IMPORTANT:** If the certificate holder is an **ADDITIONAL INSURED**, the policy(ies) must have **ADDITIONAL INSURED** provisions or be endorsed. If **SUBROGATION IS WAIVED**, subject to the terms and conditions of the policy, certain policies may require an endorsement. A statement on this certificate does not confer rights to the certificate holder in lieu of such endorsement(s).

<b>PRODUCER</b> Marsh McLennan Agency LLC 300 N. Cherapa PL Suite 601 Sioux Falls SD 57103	<b>CONTACT</b> NAME: Kathy Begtrup, CPIW, CISR PHONE (A/C, No, Ext): 605-339-3874 E-MAIL ADDRESS: kathy.begtrup@marshmma.com	<b>FAX</b> (A/C, No):
<b>INSURED</b> Midwest Alarm Co Inc dba BCI Integrated Solutions 9501 Princess Palm Avenue Tampa FL 33619	<b>INSURER(S) AFFORDING COVERAGE</b> INSURER A: Charter Oak Fire Insurance Company INSURER B: Amerisure Insurance Company INSURER C: Amerisure Partners Insurance Company INSURER D: Amerisure Mutual Insurance Company INSURER E: INSURER F:	<b>NAIC #</b> 25615 19488 11050 23396

**COVERAGES**

CERTIFICATE NUMBER: 2045639860

REVISION NUMBER:

THIS IS TO CERTIFY THAT THE POLICIES OF INSURANCE LISTED BELOW HAVE BEEN ISSUED TO THE INSURED NAMED ABOVE FOR THE POLICY PERIOD INDICATED. NOTWITHSTANDING ANY REQUIREMENT, TERM OR CONDITION OF ANY CONTRACT OR OTHER DOCUMENT WITH RESPECT TO WHICH THIS CERTIFICATE MAY BE ISSUED OR MAY PERTAIN, THE INSURANCE AFFORDED BY THE POLICIES DESCRIBED HEREIN IS SUBJECT TO ALL THE TERMS, EXCLUSIONS AND CONDITIONS OF SUCH POLICIES. LIMITS SHOWN MAY HAVE BEEN REDUCED BY PAID CLAIMS.

INSR LTR	TYPE OF INSURANCE	ADDL INSD	SUBR WVD	POLICY NUMBER	POLICY EFF (MM/DD/YYYY)	POLICY EXP (MM/DD/YYYY)	LIMITS
B	<input checked="" type="checkbox"/> <b>COMMERCIAL GENERAL LIABILITY</b> <input type="checkbox"/> CLAIMS-MADE <input checked="" type="checkbox"/> OCCUR <input checked="" type="checkbox"/> XCU GEN'L AGGREGATE LIMIT APPLIES PER: <input type="checkbox"/> POLICY <input checked="" type="checkbox"/> PRO-JECT <input checked="" type="checkbox"/> LOC OTHER:			GL2122407	1/1/2023	1/1/2024	EACH OCCURRENCE \$2,000,000 DAMAGE TO RENTED PREMISES (Ea occurrence) \$1,000,000 MED EXP (Any one person) \$10,000 PERSONAL & ADV INJURY \$2,000,000 GENERAL AGGREGATE \$4,000,000 PRODUCTS - COMP/OP AGG \$4,000,000 \$
C	<b>AUTOMOBILE LIABILITY</b> <input checked="" type="checkbox"/> ANY AUTO <input type="checkbox"/> OWNED AUTOS ONLY <input type="checkbox"/> SCHEDULED AUTOS <input type="checkbox"/> HIRED AUTOS ONLY <input type="checkbox"/> NON-OWNED AUTOS ONLY			CA2122401	1/1/2023	1/1/2024	COMBINED SINGLE LIMIT (Ea accident) \$1,000,000 BODILY INJURY (Per person) \$ BODILY INJURY (Per accident) \$ PROPERTY DAMAGE (Per accident) \$ FL PIP \$10,000
D	<input checked="" type="checkbox"/> <b>UMBRELLA LIAB</b> <input checked="" type="checkbox"/> OCCUR <input type="checkbox"/> EXCESS LIAB <input type="checkbox"/> CLAIMS-MADE DED <input checked="" type="checkbox"/> RETENTION \$ 0			CU2122405	1/1/2023	1/1/2024	EACH OCCURRENCE \$10,000,000 AGGREGATE \$10,000,000 \$
C	<b>WORKERS COMPENSATION AND EMPLOYERS' LIABILITY</b> ANY PROPRIETOR/PARTNER/EXECUTIVE OFFICER/MEMBER EXCLUDED? (Mandatory in NH) If yes, describe under DESCRIPTION OF OPERATIONS below	Y/N <input checked="" type="checkbox"/> Y <input type="checkbox"/> N/A		WC2122404	1/1/2023	1/1/2024	<input checked="" type="checkbox"/> PER STATUTE <input type="checkbox"/> OTH-ER E.L. EACH ACCIDENT \$1,000,000 E.L. DISEASE - EA EMPLOYEE \$1,000,000 E.L. DISEASE - POLICY LIMIT \$1,000,000
A	Installation Floater; \$1,000 Ded.			6305R102902	1/1/2023	1/1/2024	Job Site Limit 650,000 Stored Materials 650,000

DESCRIPTION OF OPERATIONS / LOCATIONS / VEHICLES (ACORD 101, Additional Remarks Schedule, may be attached if more space is required)

Excluded from Workers Compensation: Marva L. McMillen.

For Bid Purposes Only - DBA BCI Integrated Solutions is a Named Insured on the above mentioned policies.

**CERTIFICATE HOLDER****CANCELLATION**

To Whom It May Concern

SHOULD ANY OF THE ABOVE DESCRIBED POLICIES BE CANCELLED BEFORE THE EXPIRATION DATE THEREOF, NOTICE WILL BE DELIVERED IN ACCORDANCE WITH THE POLICY PROVISIONS.

AUTHORIZED REPRESENTATIVE

© 1988-2015 ACORD CORPORATION. All rights reserved.



# Request for Taxpayer Identification Number and Certification

Give Form to the  
requester. Do not  
send to the IRS.

► Go to [www.irs.gov/FormW9](http://www.irs.gov/FormW9) for instructions and the latest information.

Print or type.  
See Specific Instructions on page 3.

1 Name (as shown on your income tax return). Name is required on this line; do not leave this line blank.

Midwest Alarm Company, Inc.

2 Business name/disregarded entity name, if different from above

BCI Integrated Solutions, United Security Alliance, Pelican Electrical Group, JN Electric of Tampa Bay

3 Check appropriate box for federal tax classification of the person whose name is entered on line 1. Check only **one** of the following seven boxes.

☐ Individual/sole proprietor or single-member LLC

☒ C Corporation

☐ S Corporation

☐ Partnership

☐ Trust/estate

☐ Limited liability company. Enter the tax classification (C=C corporation, S=S corporation, P=Partnership) ►

**Note:** Check the appropriate box in the line above for the tax classification of the single-member owner. Do not check LLC if the LLC is classified as a single-member LLC that is disregarded from the owner unless the owner of the LLC is another LLC that is **not** disregarded from the owner for U.S. federal tax purposes. Otherwise, a single-member LLC that is disregarded from the owner should check the appropriate box for the tax classification of its owner.

☐ Other (see instructions) ►

4 Exemptions (codes apply only to certain entities, not individuals; see instructions on page 3):

Exempt payee code (if any) \_\_\_\_\_

Exemption from FATCA reporting code (if any) \_\_\_\_\_

(Applies to accounts maintained outside the U.S.)

5 Address (number, street, and apt. or suite no.) See instructions.

9501 Princess Palm Ave.

6 City, state, and ZIP code

Tampa, FL 33619

Requester's name and address (optional)

7 List account number(s) here (optional)

## Part I Taxpayer Identification Number (TIN)

Enter your TIN in the appropriate box. The TIN provided must match the name given on line 1 to avoid backup withholding. For individuals, this is generally your social security number (SSN). However, for a resident alien, sole proprietor, or disregarded entity, see the instructions for Part I, later. For other entities, it is your employer identification number (EIN). If you do not have a number, see *How to get a TIN*, later.

**Note:** If the account is in more than one name, see the instructions for line 1. Also see *What Name and Number To Give the Requester* for guidelines on whose number to enter.

Social security number

\_\_\_\_ - \_\_\_\_ - \_\_\_\_\_

or

Employer identification number

4 6 - 0 3 0 7 8 9 9

## Part II Certification

Under penalties of perjury, I certify that:

- The number shown on this form is my correct taxpayer identification number (or I am waiting for a number to be issued to me); and
- I am not subject to backup withholding because: (a) I am exempt from backup withholding, or (b) I have not been notified by the Internal Revenue Service (IRS) that I am subject to backup withholding as a result of a failure to report all interest or dividends, or (c) the IRS has notified me that I am no longer subject to backup withholding; and
- I am a U.S. citizen or other U.S. person (defined below); and
- The FATCA code(s) entered on this form (if any) indicating that I am exempt from FATCA reporting is correct.

**Certification instructions.** You must cross out item 2 above if you have been notified by the IRS that you are currently subject to backup withholding because you have failed to report all interest and dividends on your tax return. For real estate transactions, item 2 does not apply. For mortgage interest paid, acquisition or abandonment of secured property, cancellation of debt, contributions to an individual retirement arrangement (IRA), and generally, payments other than interest and dividends, you are not required to sign the certification, but you must provide your correct TIN. See the instructions for Part II, later.

Sign  
Here

Signature of  
U.S. person ►

Shannon Zhong

Finance Manager

Date ►

5/6/22

## General Instructions

Section references are to the Internal Revenue Code unless otherwise noted.

**Future developments.** For the latest information about developments related to Form W-9 and its instructions, such as legislation enacted after they were published, go to [www.irs.gov/FormW9](http://www.irs.gov/FormW9).

## Purpose of Form

An individual or entity (Form W-9 requester) who is required to file an information return with the IRS must obtain your correct taxpayer identification number (TIN) which may be your social security number (SSN), individual taxpayer identification number (ITIN), adoption taxpayer identification number (ATIN), or employer identification number (EIN), to report on an information return the amount paid to you, or other amount reportable on an information return. Examples of information returns include, but are not limited to, the following.

- Form 1099-INT (interest earned or paid)

- Form 1099-DIV (dividends, including those from stocks or mutual funds)
- Form 1099-MISC (various types of income, prizes, awards, or gross proceeds)
- Form 1099-B (stock or mutual fund sales and certain other transactions by brokers)
- Form 1099-S (proceeds from real estate transactions)
- Form 1099-K (merchant card and third party network transactions)
- Form 1098 (home mortgage interest), 1098-E (student loan interest), 1098-T (tuition)
- Form 1099-C (canceled debt)
- Form 1099-A (acquisition or abandonment of secured property)

Use Form W-9 only if you are a U.S. person (including a resident alien), to provide your correct TIN.

If you do not return Form W-9 to the requester with a TIN, you might be subject to backup withholding. See What is backup withholding, later.



**MARSH & MCLENNAN**  
**AGENCY**

Marsh & McLennan Agency LLC  
300 Cherapa Place, Suite 601  
Sioux Falls, SD 57103-2277  
Office +1 605 339 3874  
[www.marshmma.com](http://www.marshmma.com)

March 18, 2021

To Whom It May Concern:

**RE: Midwest Alarm Co Inc dba BCI Integrated Solutions**

Dear Compliance,

Listed below are the Work Comp Experience Modification Rating Factors for Midwest Alarm Co Inc dba BCI Integrated Solutions:

<b>Effective Date</b>	<b>Experience Mod</b>
1/1/21	.75
1/1/20	.75
1/1/19	.90

Sincerely,

Kathy R. Begtrup, CPIW, CISR  
Client Advocate  
[Kathy.Begtrup@marshmma.com](mailto:Kathy.Begtrup@marshmma.com)





NATIONWIDE INTEGRATED BUILDING SYSTEMS PROVIDER

Toll Free (877) 616-2538 | [bcifl.net](http://bcifl.net)