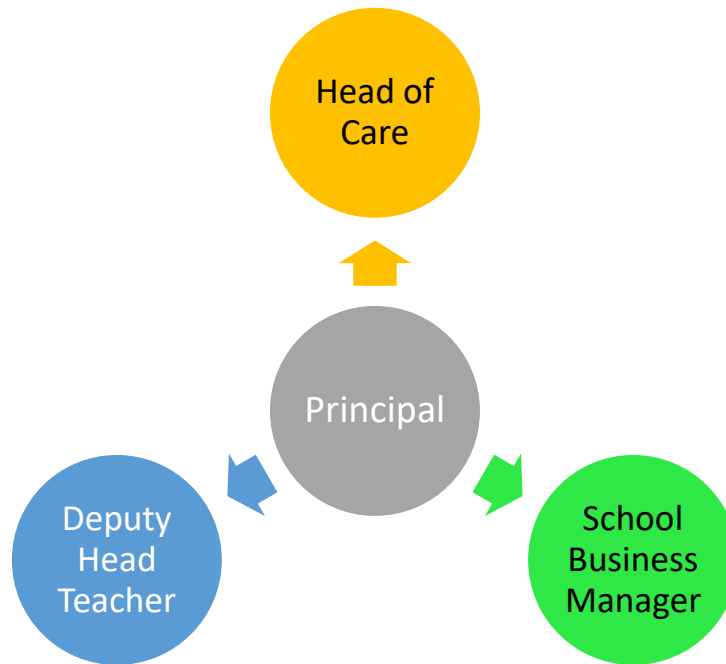


Senior Leadership Team – Support for School

Clovelly House School is an Independent Special School and does not have a board of Governors. The Principal/Director is supported by a leadership team comprising of the Head of Care, Deputy Head of Education, and School Business Manager. This team meets weekly in a SIP, (Systems, Information and Planning meeting), to review and plan for the daily and long term management of the school and children's home. This team functions to support and challenge the Principal and members of the SLT have taken on key support roles that would ordinarily be fulfilled by members of the Governing body. See below, illustration of SLT governor roles to support the school:



Key Roles:

