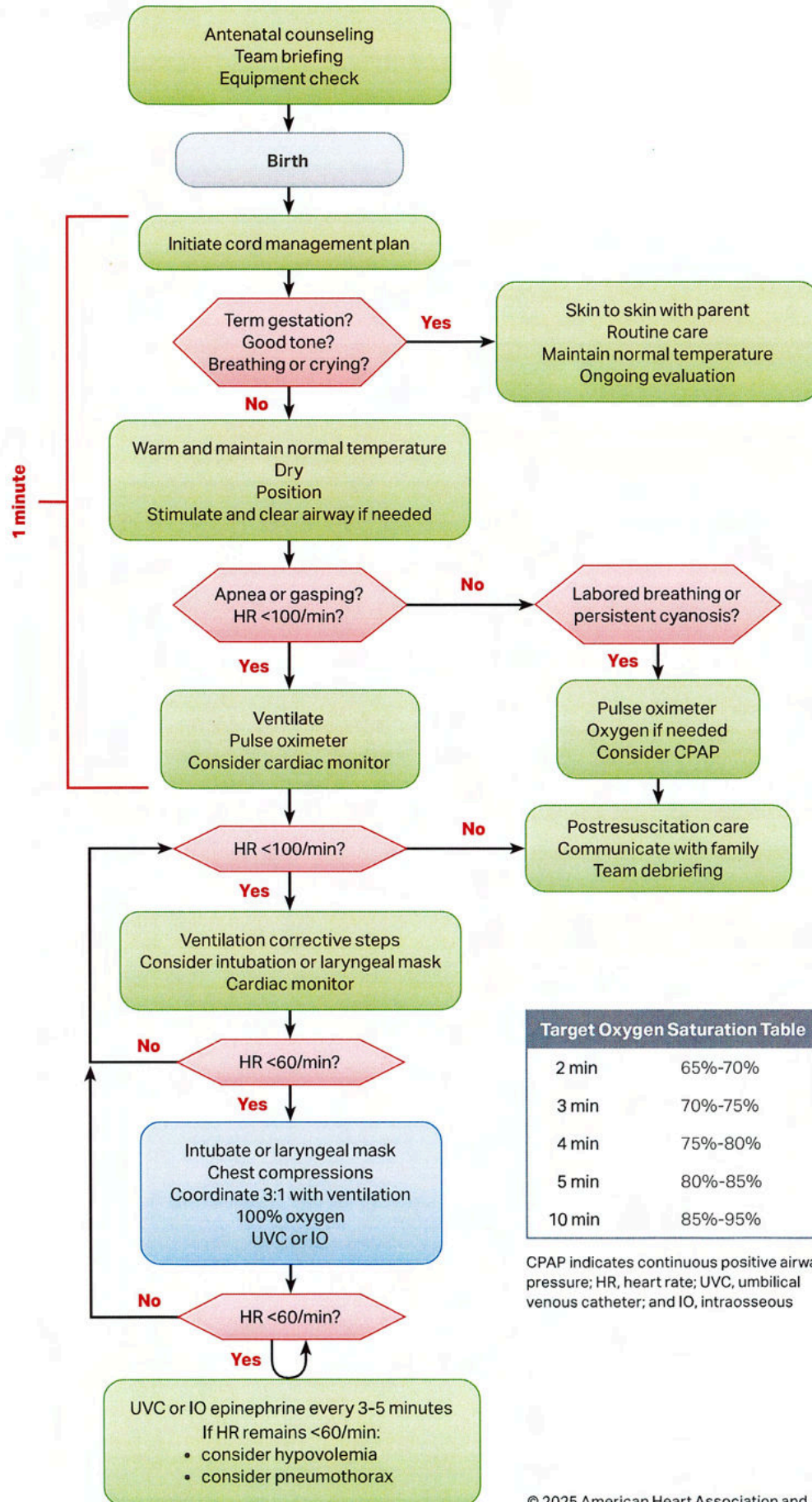
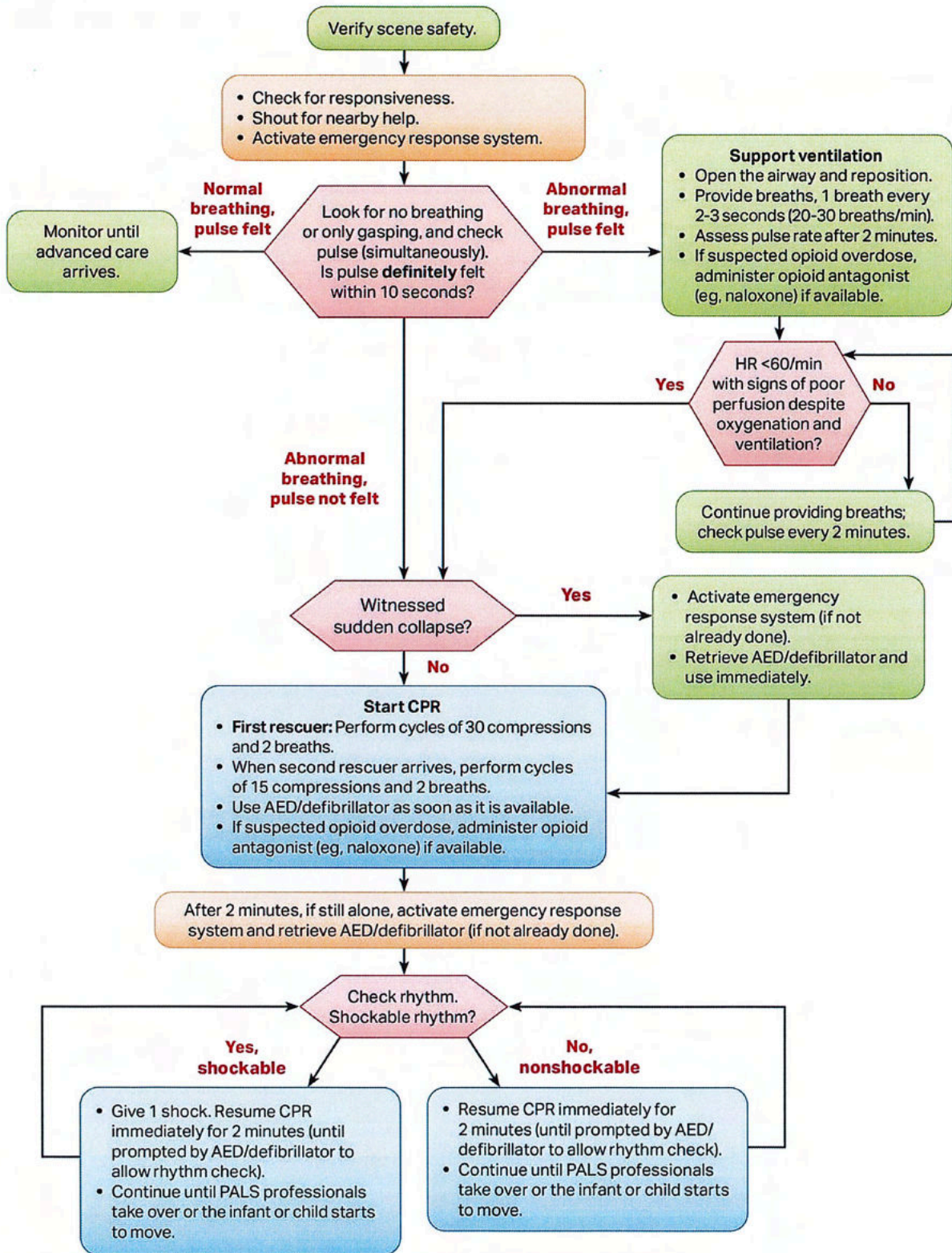


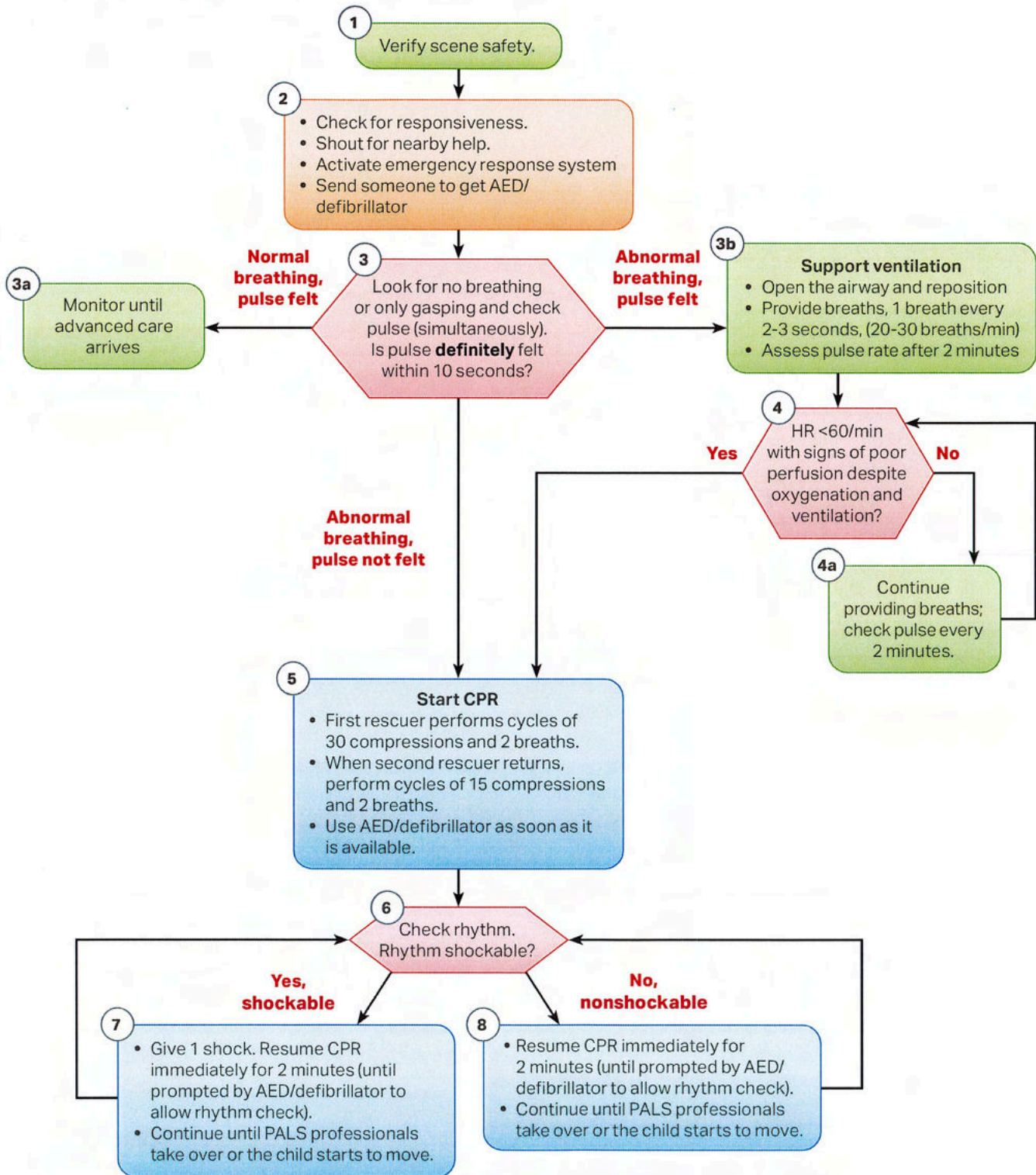
# Neonatal Resuscitation Algorithm



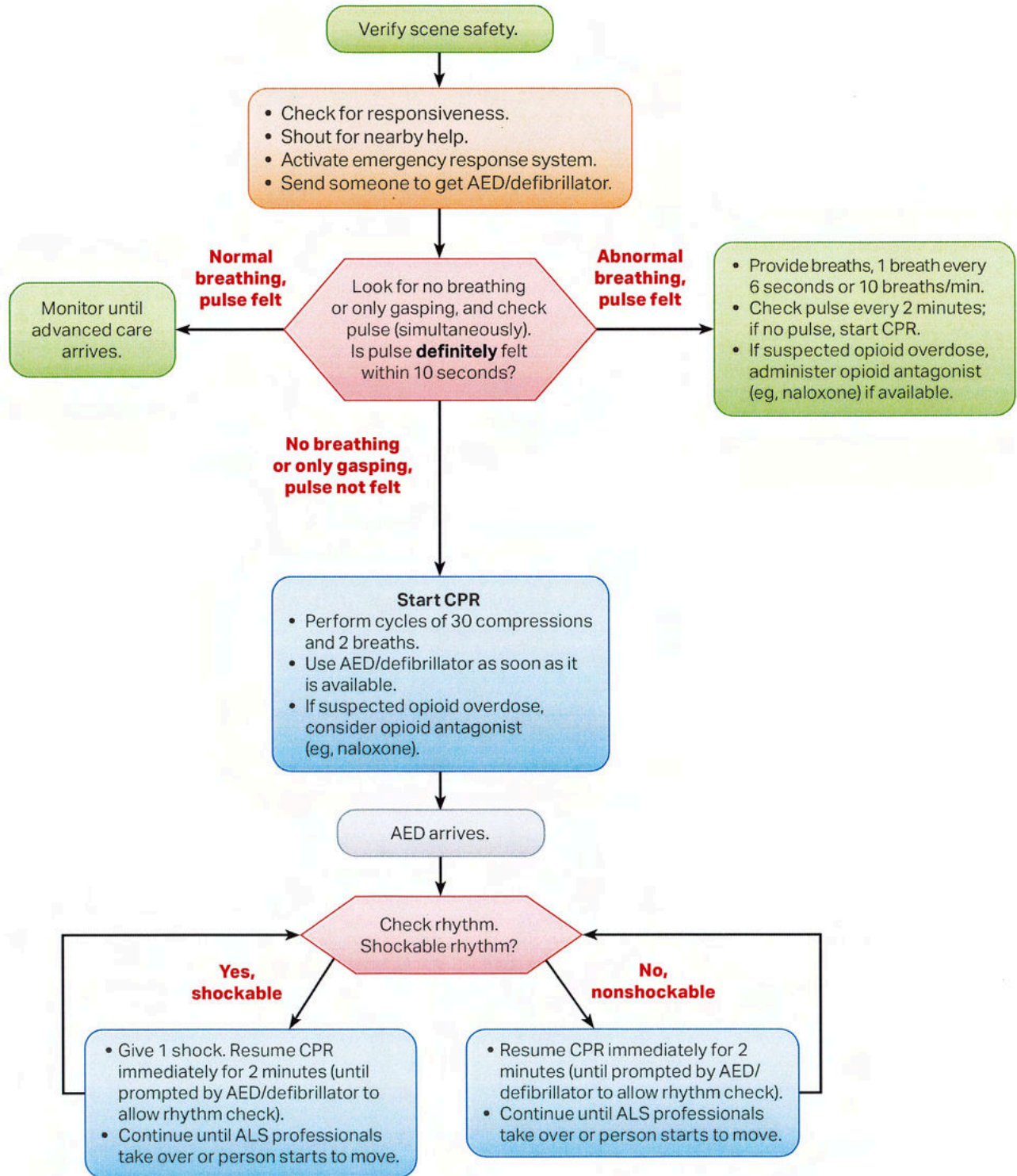
# Pediatric Basic Life Support Algorithm (Infants to Puberty) for Health Care Professionals—Single Rescuer



## Pediatric Basic Life Support Algorithm (1 year of age to puberty) for Health Care Professionals—2 or More Rescuers



# Adult\* Basic Life Support Algorithm for Health Care Professionals



\*If signs of puberty, treat as adult.