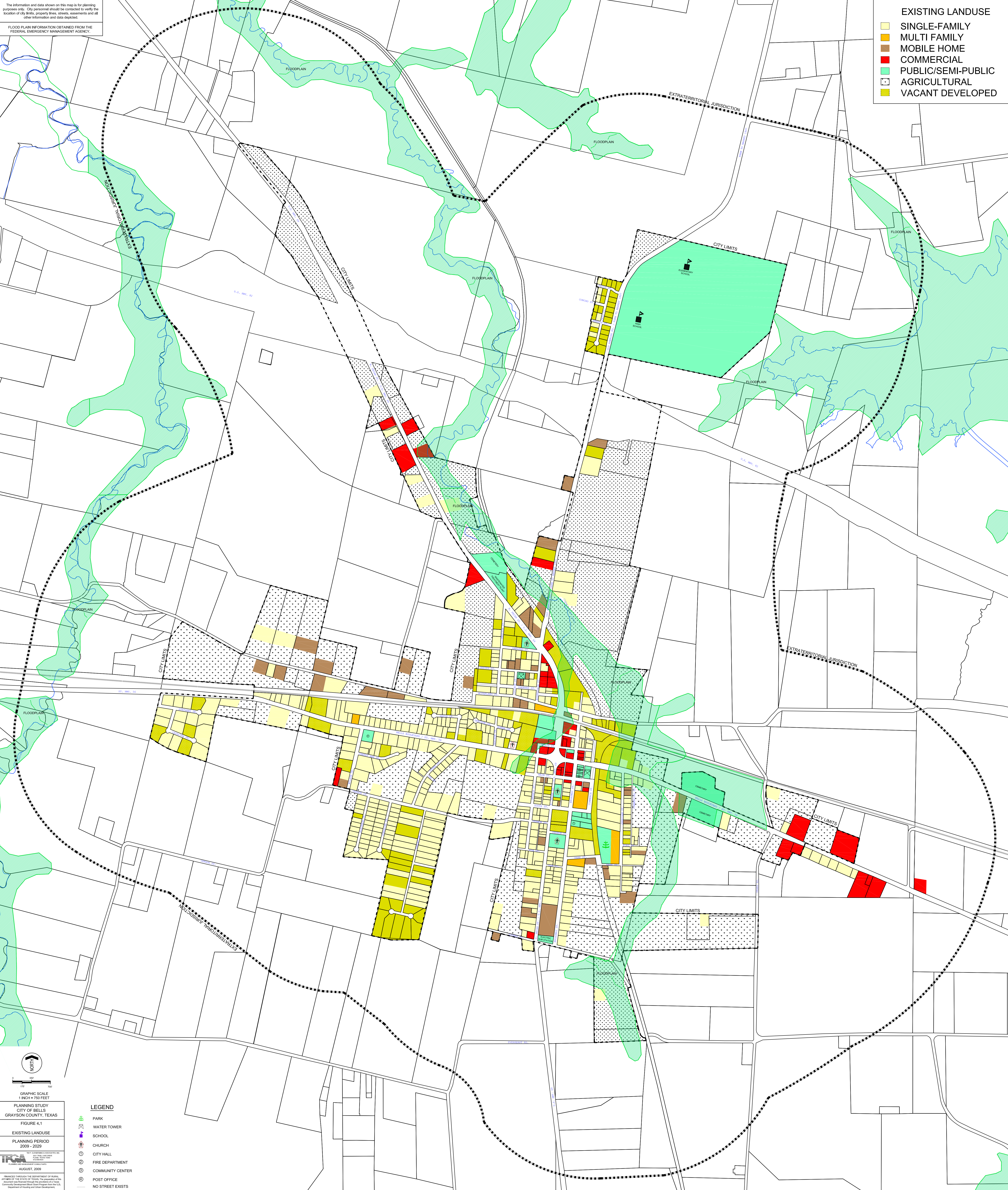


The information and data shown on this map is for planning purposes only. City personnel should be contacted to verify the location of city limits, property lines, streets, easements and all other information and data depicted.

FLOODPLAIN INFORMATION OBTAINED FROM THE FEDERAL EMERGENCY MANAGEMENT AGENCY.

- EXISTING LANDUSE**
- SINGLE-FAMILY
 - MULTI FAMILY
 - MOBILE HOME
 - COMMERCIAL
 - PUBLIC/SEMI-PUBLIC
 - AGRICULTURAL
 - VACANT DEVELOPED



GRAPHIC SCALE
1 INCH = 750 FEET

PLANNING STUDY
CITY OF BELLS
GRAYSON COUNTY, TEXAS

FIGURE 4.1
EXISTING LANDUSE
PLANNING PERIOD
2009 - 2029

IFSA
INTEGRATED FLOODPLAIN SERVICES AND
CONSULTANTS
10000 W. STATE ST. SUITE 100
DALLAS, TEXAS 75243
TEL: 972.382.1111
WWW.IFSA-CONSULTANTS.COM

Prepared for the City of Bells, Grayson County, Texas, by IFSA Consultants, Inc. on August 2009. All rights reserved. No part of this document may be reproduced or transmitted in any form or by any means electronic or mechanical, including photocopying and recording, or by any information storage or retrieval system, without the prior written permission of IFSA Consultants, Inc.

- LEGEND**
- PARK
 - WATER TOWER
 - SCHOOL
 - CHURCH
 - CITY HALL
 - FIRE DEPARTMENT
 - COMMUNITY CENTER
 - POST OFFICE
 - NO STREET EXISTS