

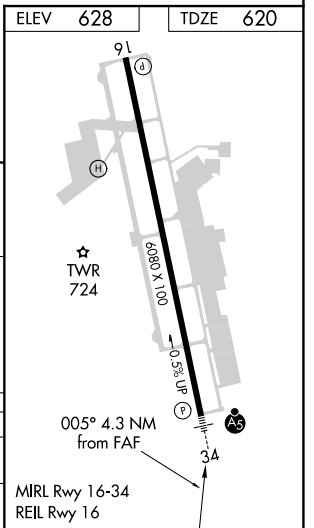
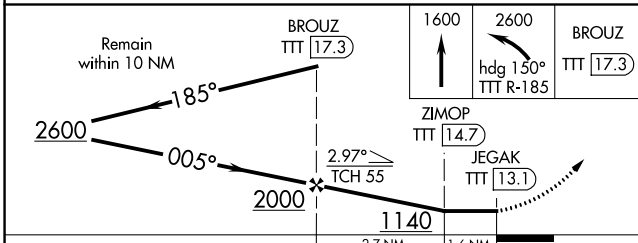
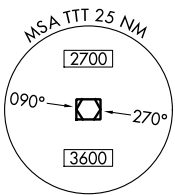
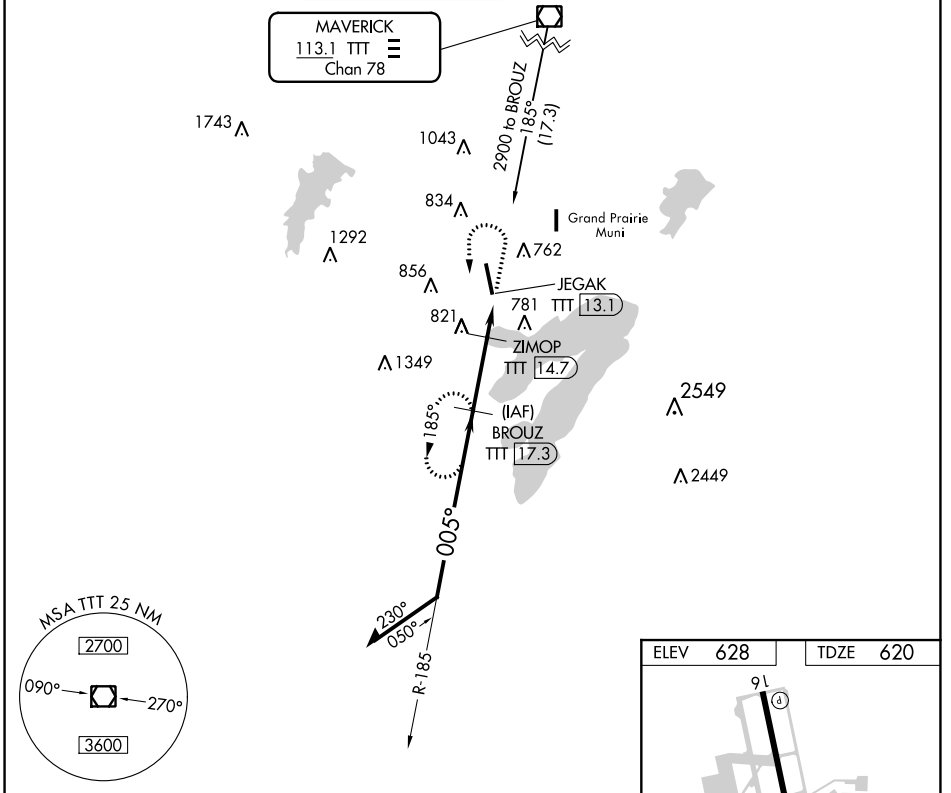
VOR/DME TTT <b>113.1</b> Chan <b>78</b>	APP CRS <b>005°</b>	Rwy Ldg <b>6080</b>
	TDZE <b>620</b>	
	Apt Elev <b>628</b>	

# VOR/DME RWY 34

ARLINGTON MUNI (GKY)

<p><b>⚠</b> Inoperative table does not apply. Visibility reduction by helicopters NA. When local altimeter setting not received, use Grand Prairie Muni altimeter setting.</p>	<p><b>MALSR</b></p>	<p><b>MISSED APPROACH:</b> Climb to 1600 then climbing left turn to 2600 via heading 150° and TTT VOR/DME R-185 to BROUZ/17.3 DME and hold.</p>
--	---------------------	---

ASOS <b>127.375</b>	REGIONAL APP CON <b>135.975 379.9</b>	ARLINGTON TOWER ★ <b>128.625</b>	GND CON <b>121.875</b>	CLNC DEL <b>121.875</b>	CLNC DEL <b>118.85</b> (When twr closed)	CTAF <b>128.625</b> <b>Ⓜ</b>
------------------------	--	-------------------------------------	---------------------------	----------------------------	--	---------------------------------



CATEGORY	A	B	C	D
S-34	1080-1	460 (500-1)	1080-1¼ 460 (500-1¼)	NA
CIRCLING	1100-1 472 (500-1)	1140-1 512 (600-1)	1220-1½ 592 (600-1½)	NA

SC-2, 15 JUL 2021 to 12 AUG 2021

SC-2, 15 JUL 2021 to 12 AUG 2021