



What's Inside?

Annual Picnic	1
Welcome Baskets	1
Welcome Baskets	2
Run Report	2
From the Chief	2
Emergency Phone Tree	2
Flora & Fauna on the Ranch	3
HR FireSafe Council	3
Ranch Service Providers	4
2017 Board Members	4
Calendar	4

Annual Picnic

It was a beautiful day and the pond was full. Over 50 people attended the annual picnic. The food was great. We have some very talented cooks around here! The silent auction was very interesting and profitable. Some beautiful handmade items were donated and sold. Thanks to Terry Lathrop, Sandra Tye, Diane Blakely, Linda Klokow, Kendra Bainbridge and Linda Richter for their generosity. Also, many thanks to Sylvia Crandall for the use of her property. Our BBQ chefs deserve appreciation too. They cooked up a storm. Many thanks are due also to our volunteers who set up and broke down the picnic.



Janet and Susan came despite their recent mishaps.

*Here's us hoping avidly
 ur recovery will be trouble free
 And very soon we shall see
 u fit as fit can be.*

~ anonymous



Welcome Baskets

A welcome basket was given to Brooke Boyer and Charlie Mehcv late in May. They purchased their property on Ponderosa Road in October 2016 and moved here from Mount Shasta. Brooke has lived in California since 2010, having moved from her hometown in Virginia. She has run the sewage plant for the city of Mount Shasta for 7 years now and also operates the snowplow wingblade in the winter, when needed. She enjoys the small community here and appreciates that neighbors help each other out. Charlie grew up in Ripon and moved to Mount Shasta in 1996. He runs the parts warehouse for Siskiyou County Central Shop in Yreka. He likes the spaciousness and small population of the Hammond Ranch area. Sierra is their friendly 9-year old Walker Hound dog and Grover is their two-year old cat who was just adopted from the Humane Society.

Welcome Brooke and Charlie!





Welcome Baskets (cont'd)

A welcome basket was delivered on Thursday to Matt Palady and Tina Holiday on Shasta Meadow View. The couple moved here last October from Monterey Bay with their 15 year old dog, "Lady". All three seem to be very happy with their new surroundings. Matt grew up in Whidbey Island in Washington and now feels like he is back in that kind of environment. He worked as a contractor and was very busy in the Carmel area. Tina was in the business of acupuncture and nutrition. Matt is busy with building a greenhouse and also a chicken coup.

A hearty welcome to our neighborhood!



Emergency Phone Tree

The Board is initiating an emergency phone tree system, mainly for fire danger and in the case of evacuation. A phone tree is a prearranged, pyramidal system for notifying a group of people by telephone. Using the phone tree system can spread a brief message quickly and efficiently to a large number of people. Katie LeBaron has volunteered to be the coordinator for that project.

The coordinator makes a list of all the members of the phone tree, including all pertinent contact information. They will then ask for people to be a key member for their area/road and assign each key member a small group of people to call. In an emergency, the coordinator calls the key members with a message. The key members relay the message to everyone on their call list until receipt of the message is confirmed. If someone cannot be contacted after a predetermined amount of time, the key member informs the coordinator.

If you would like to be on the phone tree call list, you can email Katie at katielebowden@gmail.com or send her a message via snailmail to HLA, PO Box 795, Mt. Shasta, CA 96067. Please include your name, address and contact number(s). Katie requests that you send this info as soon as possible, **no later than August 15**, so that she can get the tree up and running during the present high fire danger time.



Run Report

April, 7 calls: 4 alarms sounding, 2 medicals, 1 traffic collision;
May, 1 call: 1 traffic collision;
June, 11 calls: 9 vegetation fires, 2 vehicle fires

We had a very wet winter and that has in turn created a bumper crop of grasses and weeds, light flashy fuels that burn very quickly. These fuels can go from being damp (from overnight humidity) to extremely flammable within just an hour's time. That is why the burn bans are in place and why CalFire has suspended all use of mowers, weed eaters, gas engines, etc., after 10:00 a.m.

We wish everyone a safe and wonderful summer, such a welcome season after our wet, white, cold winter!

*Lori Luddon,
HRFC Firefighter*

From the Chief

This fire season has started early and has continued to keep us jumping. The Hammond Ranch Fire Company (HRFC) has responded to several small vegetation fires both in Hammond Ranch and surrounding areas, mostly caused by transient camp fires. One fire occurred on High Meadow in Hammond Ranch, where it was reported quickly and firefighters were able to contain and extinguish it in short order. I have not read the after-action report so I can't say what the cause was.

The 10,000 gallon fire suppression water storage tank has been constructed. Many thanks to Kelly Connor and Gisell Nova for securing the grant and administering it.

The task of plumbing the tank to a fire hydrant is now at hand. Thanks to Tom Neal, John Brennan and Dan Groom thus far for their help with this project.

We are in the middle of a busy fire season. Please be extra cautious and vigilant in reporting suspicious activity.

*Dave Jenkins
Fire Chief, Hammond Ranch*



Summer

I like hot days, hot days
Sweat is what you got days
Bugs buzzin from cousin to cousin
Juices dripping
Running and ripping
Catch the one you love days

Birds peeping
Old men sleeping
Lazy days, daisies lay
Beaming and dreaming
Of hot days, hot days,
Sweat is what you got days.

by Walter Dean Myers

Flora & Fauna on the Ranch

Did you see any of these this Spring? They were in abundance this year. They are called "Phantom" or "Snow Orchids," *Eburphyton* or *Cephalanthera austinae*. This aptly-named plant appears ghostly in the dim light of the forest floor.



~ photo courtesy of Dave Scott

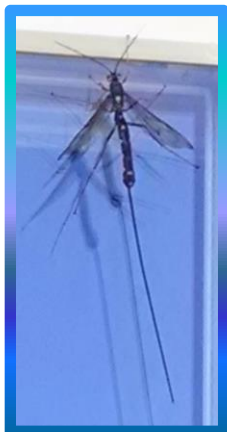
They are a waxy, white, nearly leafless plant that reach from 9" to 20" tall. These orchids are the only orchid native to the western hemisphere, being found in the northwestern U.S., and British Columbia. It has no chlorophyll, so it makes no energy for itself; it absorbs all its nutrition from the forest duff, aided by a fungus in its roots.

The plant is becoming scarcer as its habitat, dense, isolated forest, becomes rarer.



The unusual looking insect below was seen on the Ranch recently. After some research, it was discovered to be a female Giant Ichneumon, a type of wasp. They can be found in mixed forests with dead and dying broad-leaved trees and logs throughout North America, except plains and deserts.

The female has the long tail (an ovipositor) which she uses to deposit her eggs through tree bark into horn-tail larva (similar to a wasp), not for stinging.



Hammond Ranch FireSafe Council

#1—WILDFIRE ALERT—The wildfire season has started!! There have already been over 120 wildfires in our area. Hopefully you saw the recent memo from Tim DeVos (Weed CalFire Battalion Chief) that requested your assistance to reduce the threat of wildfires. The high number of wildfires is a major concern because CalFire is "reaching a point of resource drawdown." For example, Tim is currently out of our area fighting the large wildfire in Mariposa (Yosemite). Please do everything you can to prevent a wildfire!!

#2—OPEN HOUSE—Thanks again to all the great people who helped with the recent open house at the Hammond Ranch Fire station. There was a good turnout with great food -- thanks again to Mariana and Bob Harmon -- lots of handouts and door prizes. If you attended, we hope you received useful information. We also hope you have assembled your evacuation kit and installed your new address sign.

#3—CalFire CHIPPER—Don't give up!! The Chipper program is temporarily stopped pending resolution of several problems such as liability insurance. A written proposal has been submitted which briefly discussed proposed changes with CalFire. This problem might not get resolved until fewer wildfires allows CalFire a chance to carefully look at the new proposal.

#4—Hammond Ranch Community Wildfire Protection Plan (CWPP)—Please review the new 16-page CWPP document that provides a plan to reduce the threat of wildfire in the Hammond Ranch Fire District. This document is important as it provides justification and endorsement for funding projects. The document is on the website (www.hammondlandowners.org). Your help is needed to carefully review and provide comments regarding the proposed plan. It is the intention to have the plan signed and released by September 1 to support grant funding submittals. Please send review comments to Randy Klokow at rklokow@gmail.com or call at 707-255-7729.



The sandhill cranes did come back this year. If you look closely, you will see that it's an adult and one of their two colts.

~ photo courtesy of Dave Scott

2017 Board Members

President	Erich Ziller	938-4993
Vice President	Paul Elberts	938-3835
Secretary	Jeanne George	524-7278
Treasurer	Katie LeBaron	938-9787
At-Large	Bob Keyser	938-4140
	Pam Robinson	707-217-1309
	Tom Wearing	938-4288

The Hammond Ranch Scene Editor
Larie Wearing 938-4288

The HLA Board of Directors cares about and wants to hear members' opinions, suggestions and ideas. Everyone is welcome to attend any of the board meetings. If you plan to attend, please let the host know in advance so that accommodations can be made.

We also encourage members to write to us and create a dialogue on topics of interest to Hammond Ranch landowners. The Board members can be reached by phone at the numbers listed above, by snail mail c/o HLA, P.O. Box 795, Mount Shasta, California 96067, or via email at

hla@hammondlandowners.org.

Calendar

- HLA Board Meeting – Second Tuesday of every month, 7:00 p.m. The location is available on the website or from any Board member. The next meeting will be Tuesday, August 8, 2017 at the Robinson residence. Call Pam or Randy at 707-217-1309 to confirm your attendance.
- HLA Annual Picnic – Saturday, July 7, 2018.
- HLA Members' Annual Meeting and Luncheon – Saturday, November 4, 2017. Location and time to be determined.
- Siskiyou County Board of Supervisors – First, second and third Tuesdays of every month, 10:00 a.m., County Courthouse, Yreka. Call Clerk at 842-8081 to confirm the meeting.
- Hammond Ranch Fire Safe Council -- Meetings will be scheduled by Randy Klokow. He can be contacted at rklokow@gmail.com.

Ranch Service Providers

A listing has been compiled of those available for hire with heavy equipment to provide services to the Ranch, including snow removal. You will find it by going to the website on the News and Events page: www.hammondlandowners.org.



Moving or changing email address?

Please send changes of address to:
The Hammond Ranch Scene

c/o HLA

P.O. Box 795

Mt. Shasta, CA 96067-0795

or email to:

hla@hammondlandowners.org

Hammond Landowners Association, Inc.



P.O. Box 795
Mount Shasta, CA 96067