

What's Inside?

Emergency Alert System Test	2
Love's Truck Stop	2
HLA 50 Year Anniversary	2
Wildfire Issues:	3
Bee Keeping in Hammond Ranch	4
Dan's Weather Report	5
2019 Board Members	7
Calendar	7
Road Fund Reminder	7
Trespass Authorization Reminder	7

A Note from the "New" Editor

After 11 years of creative and competent editing, our own Ms. Larie Wearing has redirected her flying fingers to different pursuits. I am Linda Klokow – newest volunteer to take on this task. There have been several editors over the years who have brought their own flavor to the newsletter. I hope to be able to carry on this tradition and bring informative and interesting articles to all the HLA members. I will welcome any input or suggestions from all of you as this is a new venture for me. Larie has kindly promised to be on call for any "yikes" moments. We should all be grateful for the many, many hours she contributed to HLA. She will be missed, but not too far away.

Linda Klokow - Contact me at lkzoomer@gmail.com

Welcome SPRING!!



President's Message

Your HLA board has been busy the past year working hard to improve life and safety here on the Ranch.

The most important projects concern fire safety. We assisted in the creation of the Hammond Ranch Fire Safe Council. The board has also joined the Council in submitting a grant proposal that could provide money for shaded fuel breaks and to establish and improve evacuation routes. The Hammond Ranch Emergency Alert Notification System is up and running as a backup to the Code Red system. Fire prevention and evacuation routes, along with general fire safety will continue to be a board priority this year.

Other projects this past year include:

- continuing contact with Pacific Power to assure electrical service reliability.
- continued support for the Dale Creek Road lawsuit defense.
- providing welcome baskets for new Ranch residents.
- the Board has filed a lawsuit to stop Loves' 17.6 acre truck stop on Sugar Pine Road bordering Hammond Ranch properties.

- worked with the County to eliminate several illegal drug operations on the Ranch.
- encouraged the County's revised camping ordinance that will prevent Ranch properties from becoming campgrounds.
- continued financial reimbursements to road user groups to assist with road maintenance.
- hosting HLA's annual members' meeting and summer picnic.
- providing reliable information to landowners to help resolve disputes.
- working with County officials on code and ordinance enforcement.

The current Board is an exceptional group of your neighbors who are giving their time and energy to make Hammond Ranch a stronger and safer community for everyone. We welcome and encourage support and participation of all residents to take a turn as a board member or to help with projects of interest.

*Erich Ziller, President
HLA Board*

Our Mission Statement: To provide information, to assist in the coordination of group actions, to determine guidelines and make suggestions in matters relating to development and use of property on Hammond Ranch.

Hammond Landowners Emergency Alert System

The Hammond Landowners Association Emergency Alert system now includes over 100 property owners who have requested to receive an Alert message via HLA in the event of a wildfire occurrence that may endanger the Hammond Ranch area. **We will be conducting a test** of the phone/text tree system in late spring, prior to wildfire season, to ensure that it is successful in reaching all those who have signed up. Most registrants will receive a TEXT message along the lines of "This is a TEST of the Hammond Landowners Association Emergency Alert system. Please reply to confirm receipt of message." In some cases, a phone call will be made to those who cannot receive a text message. Due to the large number of property owners who have signed up, we can only ensure that one phone number per household will be contacted. It is important to know the name and cell phone number of the person who will be passing the message on to you, so if you do not know who that is, contact Katie LeBaron at katielebowden@gmail.com or 831-246-0123. If you have concerns, questions or wish to be added to the Alert system, contact

Katie LeBaron, VP, HLA Board



HLA is 50 Years Young!!

Hammond Landowners' Association is celebrating its 50th Anniversary this year! The first property owners saw the need to join together for common interests and to lay the foundation for this new promised land. Through the years, many residents have offered their time and talents as board members to tackle problems, resolve disputes, address safety issues, and improve life on the Ranch.

Some of these issues and projects have included:

- working to improve roads
- facilitating street signs, speed signs, and no trespass signs
- reimbursing for road work
- assisting in the creation of the Hammond Ranch Fire Company
- confirming Dale Creek Road as a private road and having the Forest Service remove it from their maps
- assisting Dale Creek easement owners in their lawsuit defense
- providing information to help resolve landowner disputes
- working with the county to enforce codes and ordinances
- creating a sense of community and identity for Hammond Ranch

There is always more work to be done. We thank those who have served on the Board through the years and appreciate those who will participate and contribute in the future. We encourage more property owners to join the Association, and with everyone's energy and efforts, someday our roads and potholes will be paved in gold!

*Erich Ziller, President
HLA Board*

Love's Truck Stop

The Hammond Landowners' Associations lawsuit against Loves to prevent the construction of a large truck-stop bordering Hammond Ranch properties is proceeding. The Administrative Record has been finalized and certified and more court hearings are pending.

In the most recent action, Loves is requesting modifications to the approved conditional use permit, sign permit, and architectural review. These changes include the relocation of the vehicle maintenance building, removal of one of the fast food restaurants, changes to building sizes, changes to signs, and an increase from 17.6 acres to 18.25 acres in project size.

The City of Weed has scheduled a Planning Commission hearing for April 17, 2019 to consider these changes. We are seeking documentation of the specifics of these changes and will challenge them.

Hammond Ranch opposes this project based on many procedural, safety, and environmental reasons. Most important, the state has designated this location as a Tier3- Extreme Fire-Threat Area and the increased fire risk that 3,000 to 5,000 nonresidents will bring to our area daily is unacceptable and unconscionable.

For more information contact erichziller@yahoo.com



The Sandhill Cranes are Back

Some of our cherished part-time residents seem to have returned for a season of nesting, brooding and raising chicks. What elegant birds they are!

Our Hammond resident and bird expert, Kendra Bainbridge of Raven Tree Shop (Mt. Shasta), says that 4 have been spotted and will likely settle down in a quiet spot on the banks of the Hammond Ag. Reservoir for the season. Please keep dogs on leash and away from the Reservoir, especially along Dale Creek Road.

You may HEAR the Sandhill Cranes before you actually see them. Follow this link to hear what they sound like.

<https://www.nps.gov/yell/learn/photosmultimedia/sounds-sandhillcrane.htm>



WILDFIRE ISSUES....

THE HAMMOND RANCH VOLUNTEER FIRE COMPANY CELEBRATES "30-YEARS OF SERVICE."

The Hammond Ranch Volunteer Fire Company (HRVFC) was started in 1989 by a group of volunteer residents. Starting with nothing except the vision and talent of local volunteers, the Fire Company today is a team of trained firefighters, located in a permanent fire station, and equipped with modern wildland fire fighting vehicles.

Each month, the HR Volunteer Fire Company responds to emergencies such as structure and home fires, forest and wildland fires, vehicle accidents, medical emergencies, natural disasters, and general public assistance.

The HLA community owes a huge "THANK YOU" to volunteers who created and continue to maintain the volunteer fire company.



The HRVFC is looking for volunteers. If you have a heart for public service, at least 18-years old, physically fit and have time for fire training-Stop by the fire station and offer to join.



RUN REPORT--HAMMOND RANCH VOLUNTEER FIRE COMPANY

During the first quarter of 2019 (Jan to Mar), the HRVFC responded to 2-structure fires, 6-medical calls, 2-traffic collisions, 1-lift assist (didn't know they did that?), 1-smoke check, 1 potential chimney flue fire, and 1-false alarm.

Many thanks to our Volunteer Fire Company

CAL FIRE CHIPPING PROGRAM

A huge Thank You to **Patty Hood** (Battalion Chief), **Wyatt Tanner** (Captain), and **Matt Hill** (Captain) at our local CAL FIRE-Weed Fire Station. CAL FIRE has again offered to provide wildfire fuel reduction chipping services. Last year, this successful program chipped wildfire fuel from about a dozen HLA landowner properties.



This spring, if you have wood fuels that you want chipped:

1. Please cut and locate the fuels for easy access along your road. Please place the cut ends in one direction 90-degrees from the edge of the road (not parallel to the road). Please ensure your pile does not have rocks, mud, stumps, roots, poison oak, vines, leaves, pine needles, garbage or tree limbs greater than 8-inches in diameter.
2. Contact Davis Bowden (tel 831-246-3769) when your material is ready to be chipped. Please provide your name, telephone number, address, and the approximate amount of material to be chipped (i.e. A stack about ___ft long by ___ft wide by ___ft wide). **Huge "Thank You" to Davis Bowden** for helping coordinate this program.
3. Davis will coordinate the chipping with CAL FIRE. Please be patient as the chipping service is dependent upon availability of CALFIRE personnel and equipment. This service can be interrupted or stopped depending upon other CALFIRE work commitments.

HR FIRE SAFE COUNCIL WILDFIRE GRANT

Last December, the HR Fire Safe Council submitted a grant proposal to improve wildfire safety in the Hammond Ranch VFD area. If approved, the grant will provide funding to create a shaded fuel break along Dogwood ridge, remove hazardous vegetation along emergency evacuation roads, create demonstration 100-foot clearance properties, and conduct landowner wildfire protection training.



Our grant proposal is in competition with other fire safe projects in California. Project approval is pending. Keep your fingers crossed and hope we get approved and funded!!

**FOR MORE WILDFIRE INFORMATION-SEE THE HAMMOND RANCH WEB SITE-
www.hammondlandowners.org**

Bee Keeping in Hammond Ranch



I was asked to describe what it is like to take care of bees at my home on Oak Ridge Drive. Actually, I think it is the other way around. The bees look after me in my busy schedule. I have been with the girls (the workers), and a few boys (the drones), for over two years and I am still amazed at the way they provide for each other and create an environment of organization and abundance. Nothing goes to waste. Each one lives their relatively short life tending to the young, cleaning the hive, tending the Queen, foraging for food, protecting the colony, or producing the elixir of the gods ... Honey! As an antibacterial and antioxidant, healing wounds, promoting heart health and other nutritional benefits, honey is packed with benefits for all. In addition to the honey, venom treatments are popular for their success in treating arthritis.

I became interested in bees accidentally when a friend of mine mentioned a new group that was beginning at the Agricultural Department in Yreka. It has evolved to be the Siskiyou County Bee Association which meets at the Agriculture Building in Yreka on the first Tues. of each month at 6PM. At that first meeting in the Spring and after a minimal amount of information, I was so excited that I got two "double deeps" and had a whole lot of bees. (Double deeps are full 10 inch frames).

I was surprised when they survived my first year, but I had great mentorship in the bee group. I really had no idea of what I was doing. Allister Mowat, a fulltime professional beekeeper, recently retired, was kind enough to come in the beginning and help with things like splitting the hives when they had grown too big for their boxes. Wonderful person!

I now have three hives and two species of bees. Two are of an Italian family variety and the other is called Carnolian. The Italian girls are light brown and the traditional coloration of a bee. The Carnolians are darker and during the Spring they multiply faster and earlier.

The third hive made from a split of the Italian hive was done by taking brood (baby bees in their cells) and food (honey) to get them started to make their own queen. (The first Italian hive was started with a purchased queen.) When a queen is missing, dead, or killed because the hive knows she is weak, the girls will start making "queen cells" and begin to feed their larvae large amounts of Royal Jelly, a substance secreted by the "nurse" bees. The cells in the hive will go from egg to queen in just sixteen days when fed on Royal Jelly. Truly amazing! And while many cells are created, the first queen to hatch will go to all the other queen cells and kill them.

The main harvest of honey is in the late summer to the early fall. The flavor will depend on the nectar flow for the season. For example, the first year I had wonderful oak flavored honey. A healthy thriving hive in a good environment can produce up to 2 gallons of honey. Unfortunately, disease, fires and smoky skies can hinder honey production. For many environmental reasons there has been a serious decline in bee populations throughout the world.

Yes, I do get stung. I've learned to relax as in meditation or yoga when approaching the hive. I now have great respect since my experience of going in too fast with no advance greeting. They let me know right away to back off. I was complacent at the beginning and decided not to wear a veil. I popped the top off and an offended kamikaze pilot stung me directly in the center of my nose at warp speed.

These days I always wear a veil, but sometimes no gloves. Overall, the girls are very gentle. I watch myself, greet them, sing to them, or just hang out with them and they are fine.

In our area, the only predators for the bees are wasps and bears. We've had a lot of bears on our property, so we put up an electrical fence and have had no problems. The bears like the larvae for the protein. Wasps are aggressive during the summer when the honey flow is on. They can smell it and will send out scouts to test the hive. When the wasps attack they are merciless and kill many bees trying to make it in the hive to take the honey. It looks like a full out war with the bees and the wasps rolling in battle with each other stinging to the death. Entrance reducers or wet towels allow the bees to "guard" only a small entrance. They can mass at these entrances to stop the wasps.

It's hard to put into words why I enjoy it so much. When I am with them, time stands still. Hours pass as if it is five minutes. The smell is so fragrant that you don't want to leave. The humming will make you put a chair close by to just feel it. They come and sit on you, landing on head or arms. Late in summer you can hear their busy humming as they are tireless workers. As I said, I am the student and they the teachers. I am grateful to be with them and learn from them. Their wisdom is ancient and their gift precious in form and spirit.

By Mariana Harmon

If you would like to try bee keeping, feel free to contact me at mharmonpestcontrolinc.com.

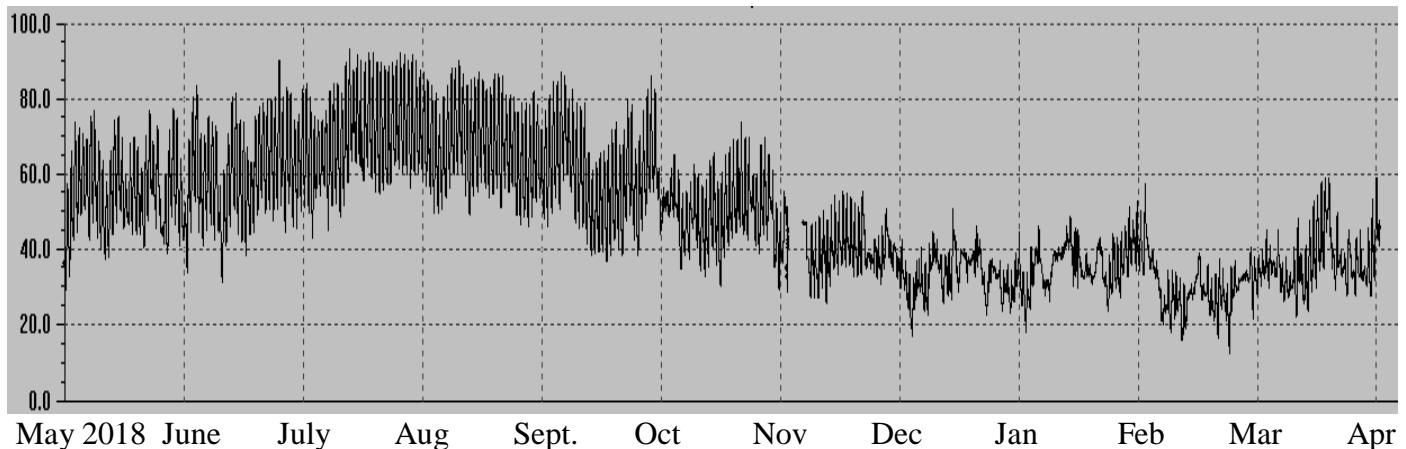
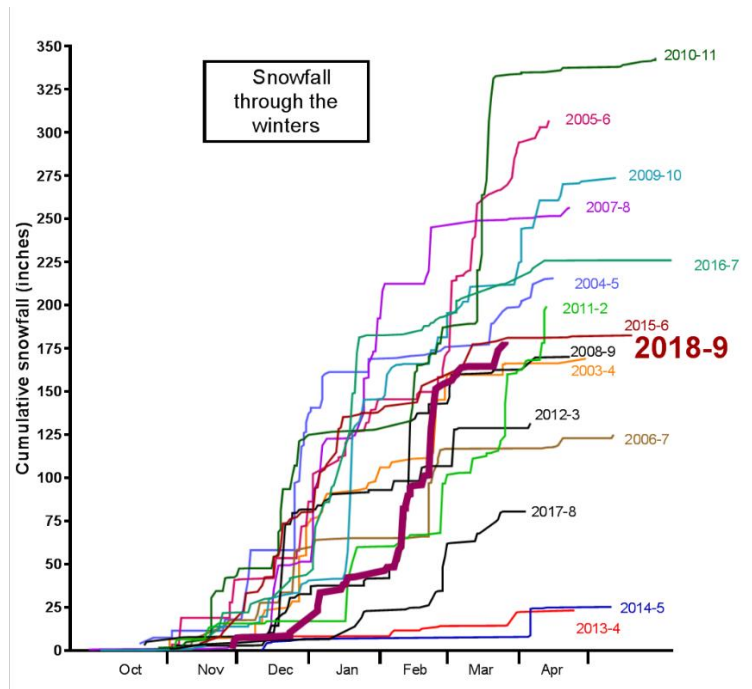


Dan's Weather Report

In comparison with most recent and rather mild and dry winters, this past winter may have seemed relatively severe. But actually, the total snowfall (as measured at 4200' elevation in the SE corner of the Ranch) was pretty typical for winters since 2003-4. This past winter has provided 178" of snow so far. Here is a graph showing the cumulative snowfall (i.e., adding up each individual snowfall) that accumulated by any date, for every winter.

The 2018-9 winter (up to April 1) is shown in the dark (purple) thick line. Several things can be seen from this graph and other recorded data:

- (1) The snow season started rather late this past winter, but the cumulative total caught up with the pack by producing a very snowy February.
- (2) Each graph ends at the last date of measurable snow. Clearly, some significant accumulation often occurs in the month of April.
- (3) For at least 80% of the individual snowstorms, the temperature hovered in the 30 to 33 deg F range, making for very wet snow. At lower elevations in the Ranch, much of that was rain, and the total accumulations there were much lower. As the average temperature warms due the global greenhouse effect, even if by only one degree within the next couple of decades, we can expect snow levels to rise and thereby leave Hammond Ranch in the rain zone with much less snow.



Here is a graph of temperature, starting with May, 2018

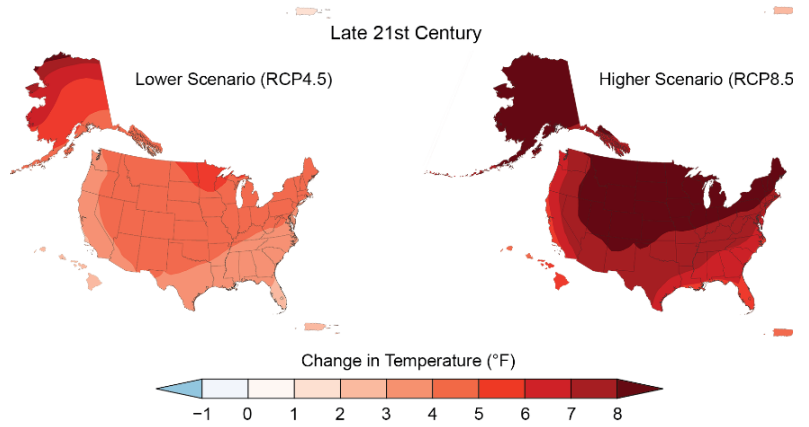
Over the decades, the statistically coldest period in the winter in the Mt. Shasta area has been the last week of December. But this past winter, the coldest period occurred in February, in which the temperature never made it past the upper 30's (except for the first few days). This cold and snowy period was caused by a persistent south-bulging undulation in the path of the jet stream, which carved out a low-pressure trough just off the coast, and guided cold air and storms into the area from the NW.

Due mainly to the atmospheric carbon dioxide levels rising steadily each year (from 320 ppb in 1960 to 412 ppb this year), global warming has set new temperature records, both in particular places and averaged over the whole world. But that warming is very different from place to place, depending on latitude, elevation, topography, and proximity to oceans. So what is to be expected here, in far northern California? Despite the current federal Executive Branch's antipathy to the notion of fossil-fuel generated global warming and to science in general, the US government (mandated by Congress) produced a very complete, lengthy, and scientific document on this subject in 2017 (vol I) and 2018 (vol II): the Fourth National Climate Assessment (<https://www.globalchange.gov/nca4>).

Here are some key maps from that study showing how temperature and precipitation will likely change across the U.S. by the latter part of this century.

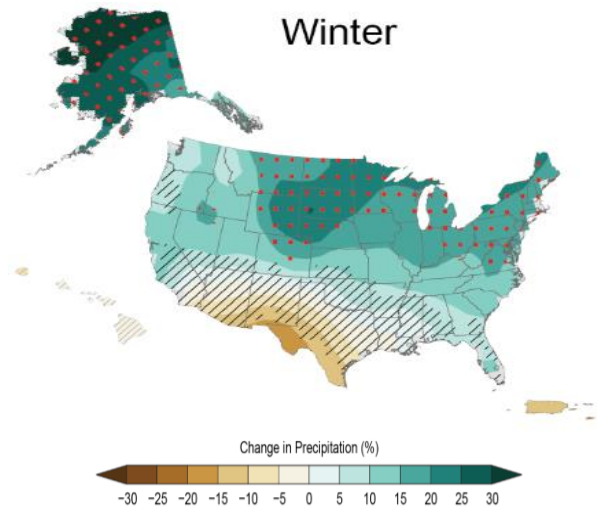
Temperature

The "lower" and "higher" scenarios represent the least and most temperature change that might be expected. Our area is among the "luckiest" ones; the temperature rise here will be limited to between about a 3 to 6 deg F temperature rise. Most of the country will see a much higher increase. Nonetheless, that more moderate increase will still produce many more 100+ deg temperatures in the summer.



Now, Precipitation in Winter

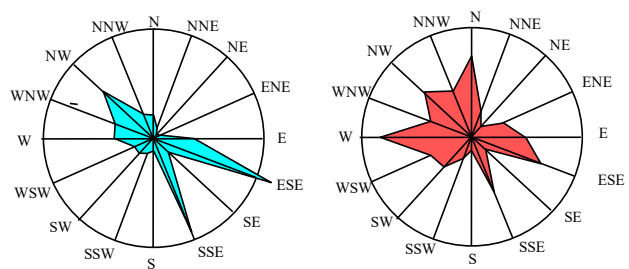
The precipitation map shows that the Mt. Shasta area will likely receive around a 10% increase in precipitation in Winter (with no significant change in the other seasons, which are much drier anyway). In combination with the increased temperature, that means more rain, and higher snow levels, which paradoxically may even increase the snowfall at higher elevations on Mt. Shasta itself, where it will still be cold enough to snow. (On the map, red stippling means variations that are much greater than natural variations; black cross-hatching means variations that are within the range of natural variations). Nonetheless, predictions point to large deviations becoming more and more common: longer periods of drought as well as longer and more intense wetter periods.



Wind

Of most immediate concern here is the weather-related behavior of wildfires, whether they are naturally triggered (say, by lightning) or "human"-caused (say, by downed overhead power lines as in Santa Rosa and Paradise).

Wind direction is important: if it is from the south, then firebreaks need to be fashioned to the south of a populated area. It turns out that an analysis of actual window direction for the past five years in the Hammond Ranch area shows two dominant directions: from the NW and from the SE.



The left (blue) graph is for Winter (Nov 1 to May 31) and the right graph is for Summer (June 1 to Oct. 31). The latter (summer) is of the most concern because that corresponds to "fire season". The colored regions represents the relative fraction of the time that the wind comes *from* the indicated direction. For example, in winter, the wind is from the ESE a larger portion of the time than from any other direction. The interesting thing here is that, in summer, the wind is much more often from the west - northwest - north quadrant than from any other direction. This means that firebreaks might be needed in those directions as much (or even more) than they are needed to the south. One qualifier: the details here are probably very dependent on location because the winds are blocked or enhanced by the local hills and surrounding mountains.

By Dan Axelrod

2019 Board Members

President	Erich Ziller	938-4993
Vice President	Katie LeBaron	831-246-0123
Recording Sect'y	Jeanne George	524-7278
Correspondence		
Secretary	Paul Elberts	938-3835
Treasurer	Betty Leas	926-2149
At-Large	Bob Keyser	938-4140
	Wilma Dibelka	938-2055
	Randy Klokow	707-255-7729

The Hammond Ranch Scene Editor
Linda Klokow 707 255-7729

The HLA Board of Directors cares about and wants to hear members' opinions, suggestions and ideas. Members are welcome to attend any of the board meetings. If you plan to attend, please let the host know in advance so that accommodations can be made.

We also encourage members to write to us and create a dialogue on topics of interest to Hammond Ranch landowners. The Board members can be reached by phone at the numbers listed above, by snail mail c/o HLA, P.O. Box 795, Mount Shasta, California 96067, or via email at hla@hammondlandowners.org.

Calendar

- HLA Board Meeting – Second Tuesday of every month, 7:00 p.m. The location is available on the website or from any Board member. The next meeting will be Tuesday May 14, 2019, location to be determined. Members welcome. Call any Board member for the location and to confirm before attending.
- HLA Annual Picnic – Saturday, July 7, 2019. Location and time to be determined.
- HLA Members' Annual Meeting and Luncheon – Saturday, November 2, 2019. Location and time to be determined.
- Siskiyou County Board of Supervisors – First, second and third Tuesdays of every month, 10:00 a.m., County Courthouse, Yreka. Call Clerk at 842-8081 to confirm the meeting.
- Hammond Ranch Fire Safe Council -- Meetings are scheduled by Randy Klokow. He can be contacted at rklokow@gmail.com.

Road Reimbursement

Reminder to all road committees: Keep your receipts from any road work that you do as the year progresses. Receipts are due by October 1st for consideration in the current fiscal year's budget. Submit them to any board member or mail to Hammond Landowners Association, P.O. 795, Mt. Shasta, CA 96067-0795

Trespass Authorization

With Spring weather comes the potential for trespassers and campers. Make sure that your neighbors and the Sheriff's Department can enforce "no trespassing" on your private property if you are not on site. Download a **Trespass Authorization Form** from our website and follow the clear instructions for filing with the Sheriff and HLA.

www.hammondlandowners.org under the **Membership** tab



Membership Reminder

If you have not yet sent in your \$55 membership dues, please do that now!

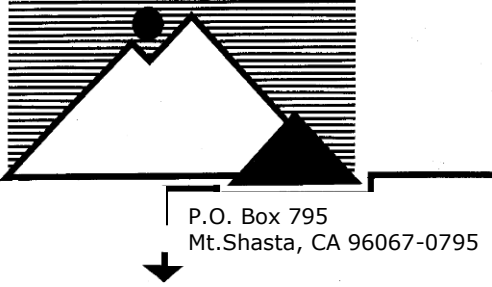
The April, July and October Newsletter is sent only to HLA members. This year we have made an exception and have included last year's members

JUST IN CASE YOU FORGOT!!

A Membership form can be found at

www.hammondlandowners.org under the **Membership** tab

Hammond Landowners Association, Inc.



We Love it Here !!



This year we celebrate the 50th year of the Hammond Landowners Association. We are seeking stories of what Hammond Ranch was like in the early days. If you have stories or photos about "way back when" and are willing to share, please send your stories and photos to the HLA Newsletter Editor (Linda Klokow) at hla@hammondlandowners.org



Moving or changing email address?

Please send changes of address to:
The Hammond Ranch Scene

c/o HLA
P.O. Box 795
Mt. Shasta, CA 96067-0795
or email to:

hla@hammondlandowners.org