



www.hammondlandowners.org

What's Inside?

Love Truck Stop Update	2
From The Fire Chief	2
Where Did They Go?	2
Welcome To Our New Residents	3
Nextdoor Hammond Ranch	3
Road Reimbursement Changes	3
Update: Fire Safe Council Grant	4
Dan's Weather Report	5
Fire Company Run Report	6
Ultra High Speed Internet	6
2019 Board Members	7
Calendar	7
Wildlife on the Ranch	7
Thank you Bob Keyser	7

HLA celebrates 50 years - 1969-2019

Imagine what our ranch was like 50 years ago. It's not too hard for some of our residents. They were here around that time and still are! In 1969 it had been 30 years since the Deer Creek fire that swept through Hammond Ranch and the surrounding area in 1939. The trees were growing nicely and the manzanita had gotten a good foothold in the sunny areas. About 8 people lived on the ranch. Old Stage Road was not paved, none of the other roads had names. There was no electric power available, no mail delivery. The average price for 5 acres could vary from about \$14K to less than \$1K depending on location and size of the parcel.

The Hammond Lake Association was formed in October of 1969 by the developers that were selling the parcels. It was not a mandatory association and had no power or mandate to collect fees. A woman named Denise Manion named all the roads – our own Wilma supplied the name for High Meadow, of course.

Some of the first HLA meetings were not even held in Siskiyou County! The official address was in Palo Alto and meetings were held in San Jose.

One of the first tasks for the Hammond Lake Association was a posting of "fiber board" signs indicating the road names as well as signs warning about no hunting, wood gathering and trespassing. Other signs were to follow in the coming years as the fiber board wore out.

The first residents were true "pioneers". They produced their own power, got the kids to the school bus over snowy and icy roads, invented methods to connect to a radio-based phone system and saw a need to band together to effect change in their community for the benefit of all.

The first HLA picnic was in 1977 and we continue to enjoy gathering to renew old friendships and meet new neighbors.



Of course, there have been bumps along the road, detours and disagreements. There always will be, but the Hammond Landowners Association (as it has been called since 1975) has been instrumental in enacting many significant improvements while maintaining the ranch's sense of independence and rural solitude.

HLA has always been about "people helping people". We have had some amazing volunteers over the past 50 years. People who wanted no reward other than the satisfaction of building a community for the betterment of all. That spirit of action and cooperation has resulted in many improvements and a community we can be proud of.

Visit our newly revamped website (www.hammondlandowners.org) to see some additional historical details and lots of information about how HLA has developed resources to inform our members.

You might even recognize a neighbor..... two-legged or four-legged!

Our Mission Statement: To provide information, to assist in the coordination of group actions, to determine guidelines and make suggestions in matters relating to development and use of property on Hammond Ranch.



From the Fire Chief

Over the years our Fire Chief, *Dave Jenkins*, has written about many issues related to fire safety, from the importance of smoke detectors to special safety considerations for older folks. However, when he was recently asked what he would consider the very most important item that all of our residents should remember, he unequivocally declared it to be ADDRESS SIGNS!

In the past, there have been cases where emergency response was delayed due to the inability to quickly and accurately locate the residence. Often no legible address sign can be seen, especially at night.

It is extremely important to post your home address in large reflective numbers that can be quickly and clearly seen from the road.

If you notice that a neighbor does not have a sign like this, a friendly reminder or an offer to help install an address sign might be a nice gesture.



Where Are They Going?

Sometimes we see or hear our Hammond Ranch Fire Company personnel heading out to help our neighbors on the ranch with medical, fire, or other problems and sometimes they are going to assist other agencies in our area.

If you are curious about what's happening, you can check the Fire Company's wonderful new webpage. www.hmm4200.org

On the right hand side of the pages, you will find a constantly updating feed that shows dispatches or other helpful information. At the bottom of the pages, you will find a constantly updating feed showing all fire/ems dispatches in the county.

Of course, if you want the information even faster and sent directly to you, there is always the option to *subscribe* to the Fire Company Twitter feed: @HMM4200

By Mark Debilka

From HLA and all the Ranch residents –
We send a sincere
THANK YOU
to Mark and our dedicated Fire Company volunteers!



A CalFire approved sign is reflective with 4" numerals, posted so it can clearly be seen from either direction on the road.

It is located at a height not covered by snow in winter and is kept clear of obscuring vegetation.

Emergency response teams cannot help if they cannot locate your residence. Do NOT assume emergency vehicles are equipped with a GPS unit that accurately identifies the location of your home.

The only sure way for an emergency response unit to quickly locate your home is a clearly visible reflective address posted at the entrance driveway.

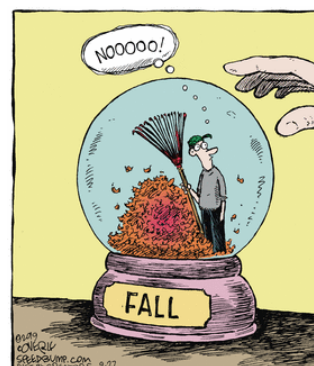
It could save your life!!

Proposed Love's Truck Stop: An Update

Oral arguments were presented to Judge Dixon on July 19. The Judge said she wanted a transcript of the hearing and gave the court reporter until August 30 to deliver the transcript. We do not know exactly when the transcript was delivered, but the Judge has 90 days to make a decision from that point.

Our lawyer, Don Mooney, has not heard anything as of 9/20, so the Judge is apparently still deliberating. We hope there will be decision before our general membership meeting on 11/2 so that we can discuss the decision with our members.

For more information contact erichziller@yahoo.com



Welcome to Hammond Ranch

The Welcome Basket Committee (Pam Scott and Larie Wearing) delivered a welcome basket to David Tribble and Alice Winholtz in August. The couple had just moved into their brand-new home on North Old Stage Road. They have a lovely home with a spectacular view of the Eddies. Both David and Alice did a lot of the work themselves in building it.

They had vacationed in this area over 35 years ago, fell in love with it and lived here for a few years before moving back to Kansas City, Missouri to be with family. Now they are retired and are back to their favorite place.

David is a semi-retired chiropractor and plans to continue to see some patients in his home. Alice is a retired project administrator.

Congratulations, Alice & David, and welcome to Hammond Ranch.



The Welcome Basket Committee also delivered a welcome basket to Sally McGregor on Osprey Lane in late September.

She is excited to be living in the new home she built after buying her property almost 30 years ago.

She had often been staying in her camper here and is very familiar with the area. Sally has lived in many places prior to making Hammond Ranch her permanent home, including the Bay Area, Redding and southern Oregon.

She has two daughters (living in Methow Valley, Washington) two dogs and a cat.

As a nurse for more than 35 years, she worked in the clinical area with neonatal and pediatric ICU patients. Now Sally is on management side and works part time as a case manager at Mercy Medical Center in Mt. Shasta.



Nextdoor Hammond Ranch

Would you like to keep in touch with neighbors, find service people, get recommendations from your neighbors, learn about or share local issues? A Hammond Ranch virtual neighborhood was created on the www.Nextdoor.com website for those purposes.

Nextdoor's purpose is to empower neighbors everywhere to build stronger local communities. Their mission is to encourage individuals to establish an essential local platform for neighbors to build connections, stay informed and help each other in their everyday lives.

If you are interested in joining the Nextdoor community for our area, email Larie Wearing at lariedw@gmail.com and an invitation will be sent to you to join.

Larie Wearing



Road Reimbursement Changes

This year the HLA board conducted a roads study to reassess the road work reimbursement allocations for the annual budget. This had not been done for 12 years.

Based on membership and length of improved road, a revision of allocations was approved by the board and will be included in the fiscal year 2020 proposed budget, which will be presented for approval at the HLA annual luncheon meeting on November 2nd.

If you would like to preview the revised allocations please visit our website:

www.hammondlandowners.org/road-work-reimbursement

The documents can be downloaded at the bottom of that page.

If you have questions about the newly proposed allocations prior to the meeting, please contact Katie LeBaron at katielebowden@gmail.com or [831-246-0123](tel:831-246-0123).

Katie LeBaron



UPDATE

Fire Safe Council Hammond Ranch Fire District



WILDFIRE FUEL REDUCTION & EDUCATION GRANT-PROJECT

REVIEW:

In April 2019, CALFIRE approved and funded a Wildfire Protection Grant for the Hammond Ranch Fire Safe Council.

The grant will remove about 240-acres of wildfire fuel. All fuel reduction work must be completed by March 2022. The grant will require about 2100-hours of volunteer community service.

The grant will improve wildfire safety in four areas:

- Remove fuel along emergency evacuation roads.
- Create a Shaded Fuel Break at Dogwood Ridge.
- Create 100-foot defensible space demonstration homes.
- Provide wildfire public education.

OCT 2019 PROJECT STATUS

1. To date, approximately 72 landowners have provided signed approval forms to allow work on their property.
2. The field work for the California Environmental study (CEQA) has been completed. The report is pending submittal to CALFIRE for final review and approval.
3. The free Chipping program is scheduled to start in early November. Chipping will be scheduled based on landowner participation along a road. To ensure efficient use of chipping resources, the program seeks to minimize movement of the chipper. Those roads that have the highest percentage of participation will be chipped first.
4. The Shaded Fuel Break portion of the grant project is finalizing the route and obtaining signed land owner approvals. The landowner participation has been very good and supportive of the project.

5. The College of the Siskiyou has given final approval for the public education class. The class will be offered on a periodic basis at both the Weed and Yreka campuses.

The first classes will be held in early December. There will be notification as to the exact dates, times and locations of the class as well as how to sign up.

IMPORTANT INFORMATION

1. The grant projects must be completed by March 2022.
2. The Chipping Program should start within several weeks and continue until stopped by winter weather (snow). The chipping will resume when the weather improves.
3. You must submit a signed approval form if you wish to participate in the Chipping program. The forms are available at the HLA website:
www.hammondlandowners.org

If you or your neighbors have material in place to be chipped, but have not completed a permission form and do not have a reflective address sign at the entrance to your property, the material will not be chipped. The more people on your road that complete these requirements, the quicker your road will be included in chipping. Get the word out!

4. SPECIAL INSTRUCTIONS: For Residents along **Old Stage Road** and **College Avenue**. These COUNTY roads have unique requirements and may not allow material to be stacked along the side of the road. Please contact the Fire Safe Council for information if you have material to be chipped. hammondfiresafe@gmail.com

IF YOU WANT MORE INFORMATION OR WANT TO PARTICIPATE, PLEASE SEND YOUR INQUIRY TO:
hammondfiresafe@gmail.com



PREPARE.



ANTICIPATE.



EVACUATE.

Dan's Weather Report

By Dan Axelrod

The summer of 2019 in Hammond Ranch

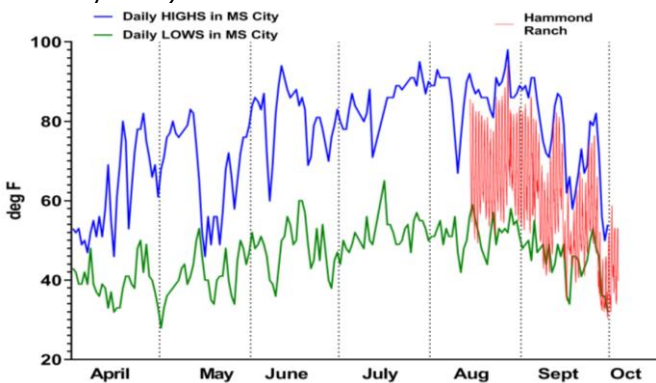
Our summer was probably perceived by residents as being mild with no extreme heat. Indeed, the temperature only exceeded 91 deg F on one day, Aug 27, with a high of 94 deg F. Also, the summer was short.

The last snowfall of the last winter occurred very late, in the overnight of May 25/26 (when a remarkable 4" fell at 4200' elevation, bringing the past winter's total to 184", very close to the average of 183" over the last 16 years), and the first snowfall of this new upcoming winter occurred very early, in the morning of Sept. 30 (when 0.1" fell at 4200' elevation). But as measured at Mt. Shasta City (elevation 3550'), the average temperature this past summer was 2.0 deg F above the 1981-2010 "normal".

In the words of the National Weather Service (NWS Medford Office), "This summer was a welcome reprieve from the very hot temperatures and numerous large wildfires that occurred recently in previous summers. While still above normal, average temperatures over the summer months (June, July, and August) were the coolest they have been since 2012."

We are lucky: globally, July was the hottest month *ever* directly recorded on earth.

Our locally recorded temperature measurements at 4200' were incomplete because of hardware problems (now rectified, thanks to the generous contribution of a working laptop from a neighbor). So the Hammond Ranch record is complete only from August 14, shown as the red trace in the graph below, recorded every 10 minutes. But the Mt Shasta City NWS readings are complete since April 1 (blue for the daily highs, green for the daily lows).



The comparison of Hammond Ranch readings with the MS City readings in the dates of overlap is quite interesting. The daily high temperatures in Hammond Ranch (4200' elevation) are almost always 3 to 5 degrees *lower* than the daily highs at MS City (3500' elevation).

This is entirely expected because of the difference in elevation. But the overnight low temperatures in Hammond Ranch are often *higher* than at MS City, despite that greater elevation!

This curiosity arises because the ground cools off faster at night (under clear skies) than does the air as it radiates heat into outer space as infra-red light. Air in contact with that cold ground quickly gets cold and consequently denser, and then rolls downhill into the valleys, where it accumulates. This radiational cooling effect is far less prominent when the sky is cloudy, as it is more often in September rather than August. So during the clouds of winter storms, radiational cooling is diminished and even the low temperatures in Hammond Ranch would be expected to be lower (because of elevation) than those in Mt. Shasta City.

What is the prognosis for the upcoming winter?

For Dec, Jan, Feb (usually the coldest, snowiest months), NWS now predicts a 40% chance of above normal temperatures. (Neutral would be a 33% chance of above normal, 33% chance of normal, and 33% chance of below normal). For precipitation, the probability of near normal is 33%. So we can expect (but not count upon) a warmer than normal winter with normal precipitation.

But why is the long-range forecast so vague?

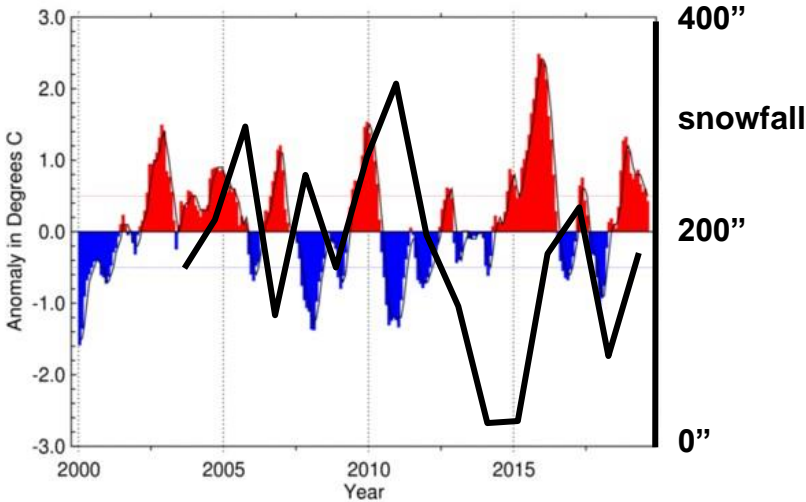
This is *not* because professional weather forecasters lack experience or scientific knowledge or intelligence; it is because weather is inherently chaotic.

That fundamental fact was discovered in the 1960's, when an atmospheric scientist (Edward Lorenz, at MIT) ran a computerized dynamic model of the atmosphere with a particular set of starting conditions (temperature, pressure, wind, etc). He got a particular prediction. Then he ran the same model but with very slightly different starting conditions, differing only by less than 0.1%, and got completely different predictions. The farther out in time the predictions, the more sensitive they are to the starting conditions.

This means that if we knew *exactly* what is the position and speed of every single air molecule (and likewise for the ocean) and for every other influence on the air and water, only then could we predict with certainty to any arbitrary time in the future. Since our available data - and computer power - is far cruder, prediction reliability drops off steadily with time to the future. The NWS makes predictions but, forthrightly reports the probability that they are correct.

Global weather, and particularly weather on the West Coast of North America, seems to be somewhat correlated with the state of eastern Pacific Ocean surface temperatures in the tropical latitudes. If those temperatures are warmer than the long term average ("El Nino"), then southern California tends to be cool and wet and the Pacific Northwest tends to be dry and warm, at least relative to their averages. (continued, pg.6)

Since we are located roughly halfway between those locations, we might expect little or uncertain effect. Below is a NOAA graph of El Nino occurrences (shown in red), the opposite temperature deviation ("La Nina" shown in blue) in the last 19 years, along with a superimposed graph of local total snowfall as measured in Hammond Ranch at 4200' (in black):



We are currently in the falling phase of an El Nino event (look for where the red area is dropping with time to the right). In most cases recently, that seems slightly correlated with a somewhat elevated snowfall the immediately following winter. But the variability is too great, and the data record too short, to make a firm prediction.



Are You Interested in Ultra High-Speed Internet?

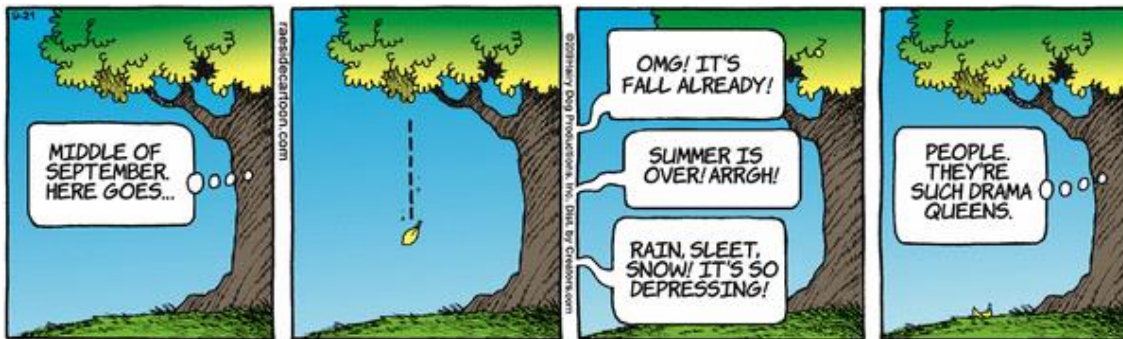
Perhaps you have seen recent trenching work proceeding near the Summit Drive underpass and areas of Old Stage Road to the south of the ranch.

Hunter Communications is laying fibre-optic cable for high-speed internet service. At this time there are no plans to continue the cable into the Hammond Ranch area, but with sufficient interest the company might consider extending their reach. If you are interested in the potential for this service they would like to hear from you.

Contact Jeff Wilsey at jwilsey@hunterfiber.com

Thank You, Dan

Many thanks to Dan Axelrod for continuing to bring us interesting weather information about our area as well as some scientific background. Weather is his hobby, but he truly understands the science behind this complicated subject. Thankfully, he is also able to present it to the rest of us in a way that us lay-people can appreciate.



RUN REPORT
HAMMOND RANCH VOLUNTEER FIRE COMPANY
 During the second quarter of 2019 (Apr to June), the HRVFC responded to 2 structure fires, 3 medical calls, 3 traffic collisions, 1 lift assist, 1 wildland fire, 5 vegetation fires, 1 untended burn pile, and 2 alarms sounding.

Many thanks to our Volunteer Fire Company

2019 Board Members

President	Erich Ziller	938-4993
Vice President	Katie LeBaron	831-246-0123
Recording Sect'y	Jeanne George	524-7278
Correspondence Secretary	Paul Elberts	938-3835
Treasurer	Betty Leas	926-2149
At-Large	Wilma Dibelka	938-2055
	Randy Klokow	707-255-7729

The Hammond Ranch Scene Editor
Linda Klokow 707 255-7729

The HLA Board of Directors cares about and wants to hear members' opinions, suggestions and ideas. Members are welcome to attend any of the board meetings. If you plan to attend, please let the host know in advance so that accommodations can be made.

We also encourage members to write to us and create a dialogue on topics of interest to Hammond Ranch landowners. The Board members can be reached by phone at the numbers listed above, by snail mail c/o HLA, P.O. Box 795, Mount Shasta, California 96067, or via email at hla@hammondlandowners.org.

Calendar

- HLA Board Meeting – Second Tuesday of every month, 7:00 p.m. The location is available on the website or from any Board member. The next meeting will be Tuesday November 12, 2019, location to be determined. Members welcome. Call any Board member for the location and to confirm before attending.
- HLA Members' Annual Meeting and Luncheon – Saturday, November 2, 2019. Tree House Restaurant, Mt. Shasta. 11:00AM –**NOTE New Time.**
- Siskiyou County Board of Supervisors – First, second and third Tuesdays of every month, 10:00 a.m., County Courthouse, Yreka. Call Clerk at 842-8081 to confirm the meeting.
- Hammond Ranch Fire Safe Council -- Meetings are scheduled by Randy Klokow. He can be contacted at hammondfiresafe@gmail.com.

Wildlife On the Ranch

This is a California Forest Scorpion, UROCTONUS MORDAX. It's been spotted many times at the 4100 foot elevation here on the Ranch.

They are about 1.5 inches long. Websites describe it as a medium-size, communal, rather shy and slow-to-act scorpion, preferring to play dead or hide rather than sting, though it will readily sting prey too big to subdue simply by biting.

The species is distributed in moist, heavily forested areas west of the Cascade Mountains from northern California into Washington state.

Brought to you by Larie Wearing

Editor's Note: Arggh!



Thank you for your Service

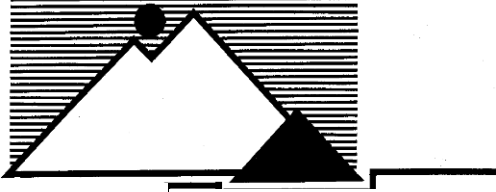
One of our steadfast ranch residents has recently "retired" from years of service to our community.

Bob Keyser was an HLA member since 1970. He served many years on the HLA board of directors and volunteered on numerous projects. Whenever a competent, hardworking individual was needed to accomplish a task, Bob would be there to help. (He didn't always *like it*, but he would *do it!*) He was an active member of the Hammond Ranch Firefighters Association, our volunteer fire company's support organization. He served as their president and coordinated fundraising efforts via the "Beer Booth" at the Siskiyou County Fair. That project, alone, raised thousands of dollars for needed expenses at the Fire Company.

He has set an example that is a model for anyone who truly wants to make a difference. We join him in encouraging a younger generation to get involved and help their community.

A Heartfelt "Thank You, Bob" from your many fans .. Enjoy your retirement!!

Hammond Landowners Association, Inc.



P.O. Box 795
Mt. Shasta, CA 96067-0795



We Love it Here !!



*Moving or changing email
address?*

Please send changes of address to:
The Hammond Ranch Scene

c/o HLA

P.O. Box 795

Mt. Shasta, CA 96067-0795

or email to:

hla@hammondlandowners.org