



Sistema

› PLEGABLE BIFOLD

System

SISTEMAS DE ALUMINIO Y PVC PARA LA ARQUITECTURA
ARCHITECTURAL ALUMINIUM AND PVC SYSTEMS



BI-FOLD SYSTEM

CORTIZO has designed more than 50 exclusive systems of windows, façades, composite panel, solar protection systems and balustrade. This commitment to innovation allows us to offer high value added products, maximizing energy efficiency, thermal and acoustic insulation and resistance to atmospheric agents.

INNOVATION

TECHNOLOGY

QUALITY

EFFICIENCY

GUARANTEE

SUSTAINABILITY

AESTHETIC

FUNCTIONALITY

DESIGN

COMFORT

R+D+I

BI-FOLD SYSTEM



Bi-fold system with Thermal break specially for enclosing large gaps with the most avant-garde aesthetic.

It has a range variety of compositions up to 14 sashes in outwards & inwards openings.

Allows to inlay bottom frame leaving threshold completely accessible.

- Maximum energy efficiency values: window transmittance from 1,5 (W/m²K)*.
- Maximum tightness: CLASS 9A, which means during 55 minutes, total affluent of 330 liters and wind velocity of 114 km/h, there's no water intake.

CATEGORIES ACHIEVED AT TEST CENTRE*

Air permeability	CLASS 4
Water tightness	CLASS 9A
Wind resistance	CLASS A3

OPENING POSSIBILITIES

Bi-fold up to 14 sashes.

*CONSULT TYPOLOGY, DIMENSION AND GLASS.



RESISTANCE TO ATMOSPHERIC AGENTS [CORTIZO COMFORT]

All of CORTIZO's enclosing systems are tested in the Test Laboratory at the Technological Center to guarantee the best performance in watertightness, air permeability and wind loads, endorsed by the maximum results in its test qualifications.

THERMAL INSULATION [CORTIZO ENERGY EFFICIENCY]

Nowadays energy efficiency in buildings is a demand made, both by the architects, as by the final customer aware of the importance of saving on heating costs and air conditioner. CORTIZO meets such challenge with systems for every climatic area with a high insulation coefficient to ensure the comfort in the residence.

ACOUSTIC INSULATION [CORTIZO SILENCE]

In order to transform the residence into a private space, intimate and free of pollution outdoor acoustics, CORTIZO has designed its enclosing systems with all the latest technological developments necessary to ensure indoors peace and relax.

UNLIMITED COLOUR RANGE [CORTIZO COLOURS]

The whole RAL colour chart in powder coating, exclusive powder coating, metallic, textured, wood effect, more than 100 finishes in anodized. Aluminum on the outside and wood in the inside, two-coloured finishes... An unlimited offer to create a colour harmony at home. Quality labels in every process: QUALICOAT, SEA-SIDE, QUALIDECO and QUALANOD.

AVANT-GARDE AESTHETICS [CORTIZO DESIGN]

We create tailor-made windows and façades for every project. Creativity to answer aesthetically and functionally to each demand. Aesthetic answers to the technical needs. Creativity at the service of habitable environments.

ENCLOSURES FOR LIFE [CORTIZO DURABILITY]

Aluminum is the most durable, long-standing and resistant material of those used in enclosures. Aluminum has the strength and a durability of the things that last a whole lifetime.

SUSTAINABLE SPIRIT [CORTIZO SUSTAINABILITY]

Respect for the environment is CORTIZO'S commitment. Using innocuous raw materials and products in all our manufacturing process and the limitless possibility of aluminum recycling, allows us to remove any creation of waste and environmental risks.



FOR MORE INFORMATION
VISIT OUR WEB
www.cortizo.com



Muestra ensayada por / Sample tested by
ALUMINIOS CORTIZO S.A.U.



Transmitancia / Transmittance

$U_w \geq 1,1$ (W/m²K)

Consultar tipología, dimensión y vidrio.
Consult typology, dimensions and glass.

CTE - Apto para zonas climáticas*: α A B C D E

*En función de la transmitancia del vidrio.

Aislamiento acústico / Accoustic insulation

Máximo acristalamiento
Maximum glazing **45 mm**

Secciones Sections	Espesor perfilera Profile thickness		
Marco / Frame	73 mm	Puerta / Door	1,8 mm
Hoja / Sash	73 mm		

Longitud varilla poliamida Polyamide strip length	Marco / Frame	20 mm
	Hoja / Sash	30 mm

Acabados / Finishes

Posibilidad bicolor / Possibility of dual colour
Lacado colores (RAL, moteados y rugosos) / Colour powder coating (RAL, mottled & rough)
Lacado imitación madera / Wood effect powder coating
Lacado antibacteriano / Anti-bacterial powder coating
Anodizado / Anodized

Categorías alcanzadas en banco de ensayos

Categorías achieved at test centre

Permeabilidad al aire / Air permeability
(UNE-EN 12207:2000): **Clase / Class 4**

Estanqueidad al agua / Water tightness
(UNE-EN 12208:2000): **Clase / Class 9A**

Resistencia al viento / Wind resistance
(UNE-EN 12210:2000): **Clase / Class A3**

Ensayo de referencia ventana 2,70 x 2,53 m, 3 hojas.
Reference test 2,70 x 2,53 m, 3 sashes.

Ensayo de seguridad / Security test

(PAS 24:2012): **Apto / Apt** **PAS24**

Ensayo de referencia 3 hojas. Configuración 330. 2701 x 2517 mm
Reference test 3 sashes. Configuration 330. 2701 x 2517 mm

Posibilidades de apertura

Plegable hasta 14 hojas
Posibilidad de apertura en esquina a 90°

Opening possibilities

Bi-fold until 14 sashes
Possibility of corner opening at 90°

Dimensiones máximas/hoja

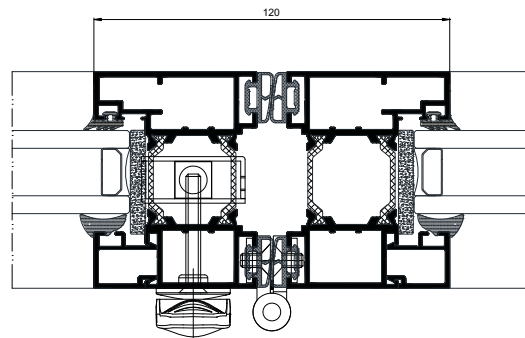
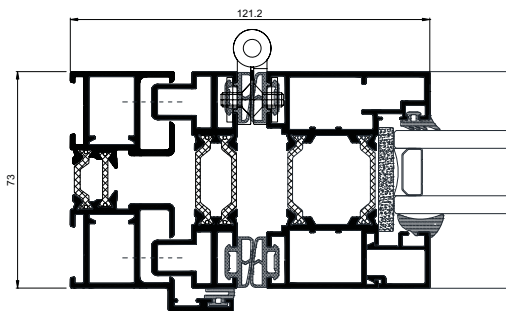
Maximum dimensions/sash

Ancho / Width (L) = 1.200 mm

Alto / Height (H) = 3.000 mm

Consultar peso y dimensiones máximas según tipología.
Consult maximum weight and dimensions in accordance to typology.

Peso máximo/hoja
Maximum weight/sash 120 Kg



Diego Piñeiro Janeiro
Director de I+D+i / R&D Manager