



## Sample

Gush Mintz THCA Hemp

Batch/Lot #

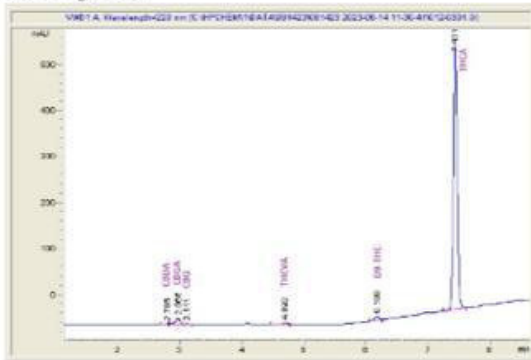
Sample Submitted: 06-14-2023; Report Date: 06-16-2023

## Gush Mintz THCA Hemp

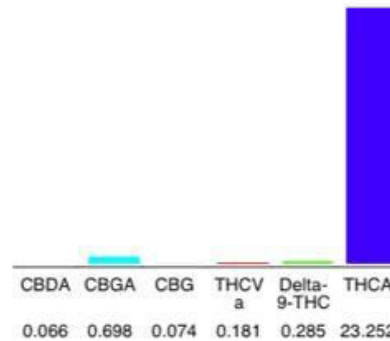
Plant Material: Flower

Batch/Lot #

### Chromatogram



### Cannabinoid Profile



### Cannabinoid Profile by HPLC

0.29%

Delta-9-THC

0.00%

CBD

24.56%

Total Cannabinoids

Cannabinoid	% wt	mg/g
CBDA	0.066	0.66
CBGA	0.698	6.98
CBG	0.074	0.74
THCVa	0.181	1.81
Delta-9-THC	0.285	2.85
THCA	23.25	232.52
<b>Total Cannabinoids</b>	<b>24.56</b>	<b>245.6</b>
<b>Calculated Total THC</b>	<b>20.68</b>	<b>206.77</b>
<b>Calculated CBD Yield</b>	<b>0.06</b>	<b>0.58</b>

Calculated Total THC = Delta-9-THC + 0.877 \* THCA

Calculated Maximum CBD Yield = CBD + 0.877 \* CBDA

### Marin Analytics, LLC

250 Bel Marin Keys Blvd, Suite D4  
Novato, CA 94949

833-321-TEST / info@marinanalytics.com

**Sara Biancalana**  
Chief Scientist

This sample has been tested by Marin Analytics, LLC using valid testing methodologies and a quality system. Values reported relate only to the sample tested. Marin Analytics, LLC makes no claims as to the efficacy, safety, or other risks associated with any detected or non-detected levels of any compounds reported herein. This Certificate shall not be reproduced except in full without the written approval of Marin Analytics, LLC. Copyright 2023 Marin Analytics, LLC All Rights Reserved.