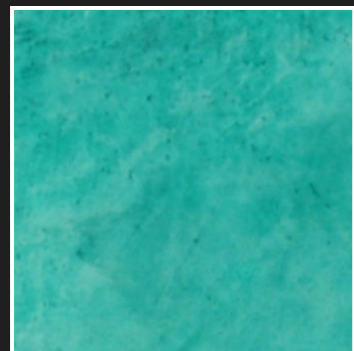


All colors shown are applied on Tru Impressions "Canvas" trowel microtopping and sealed with Stampsheen sealer.



Jade



Emerald



Rust



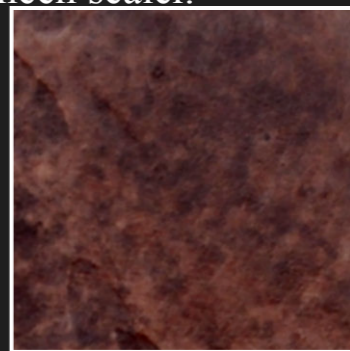
Billiard



Coronado



Dark Walnut



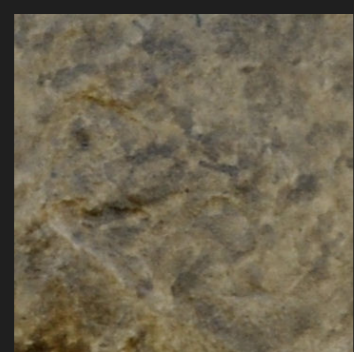
Sequoia



Espresso



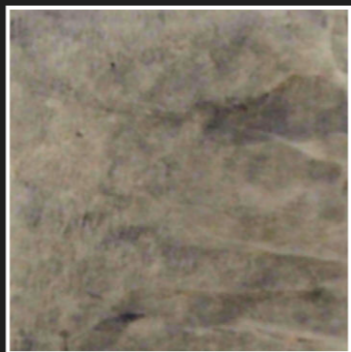
Hazelnut



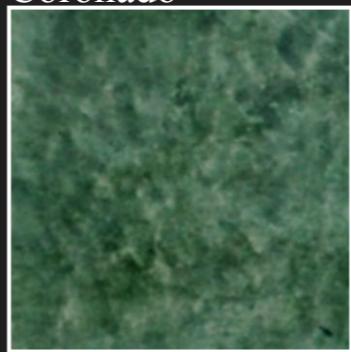
Tobacco



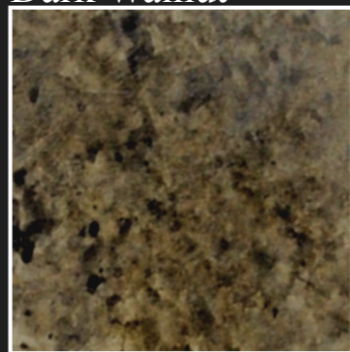
Fawn



Boulder



Spruce



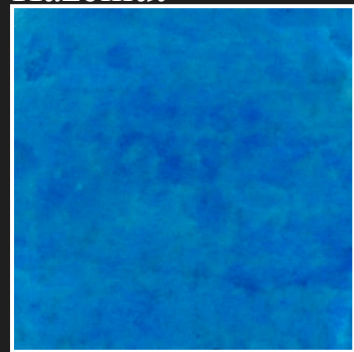
Old Plank



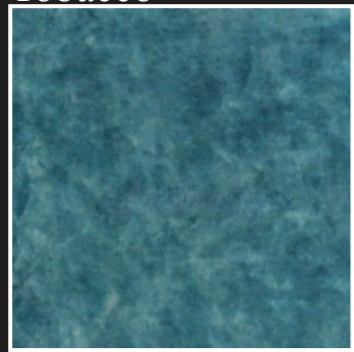
Olive



Evergreen



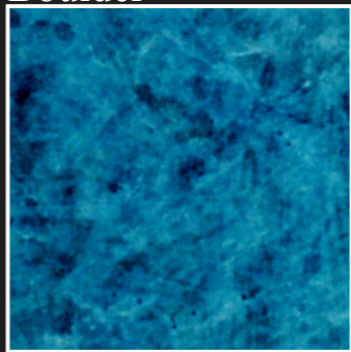
Blujay



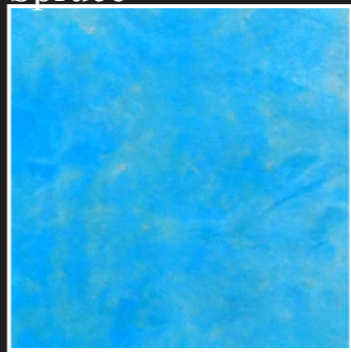
Blue Steel



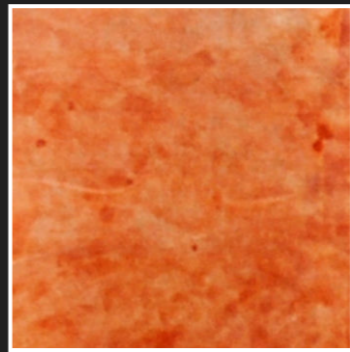
Cancun



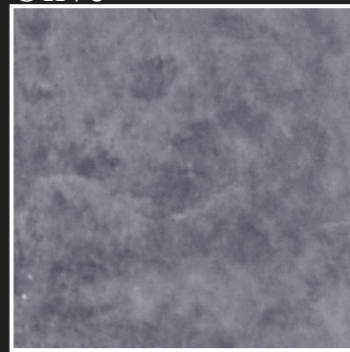
Indigo



Sky



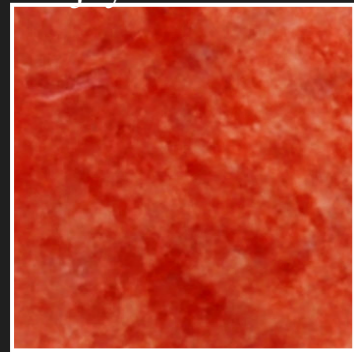
Aztec



Bluestone



October Sky



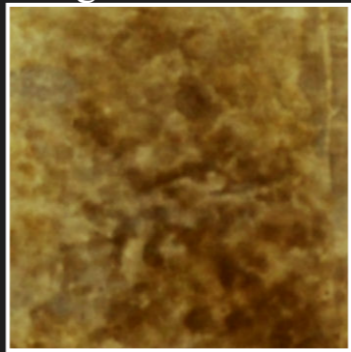
Red



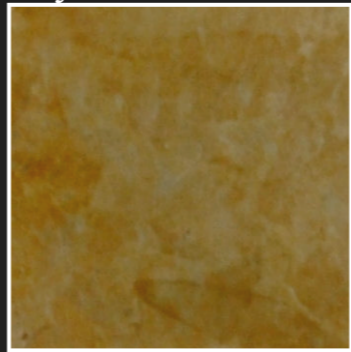
Black



Whitewash



Buckskin



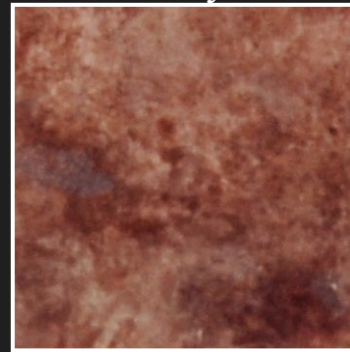
September Wheat



Copper



Champagne



Autumn



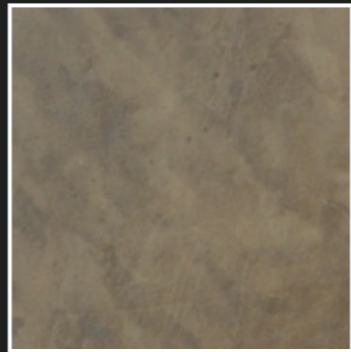
Mocha



Capaccinon



Dove



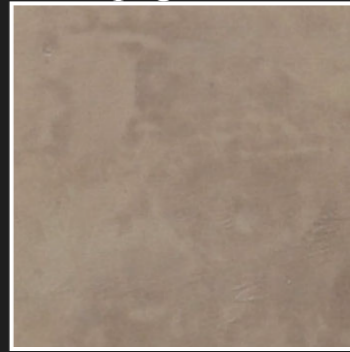
Storm



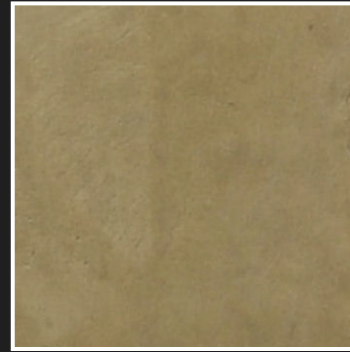
Bayleaf



Dusty Rose



Mauve



Whey

Preparation: Surfaces should be clean and free from oil, paint, wax, sealers, curing compounds, related surface stains, and dirt that may interfere with the penetration and adhesion of the stain. Use industrial degreaser for removing grease, oil, or rubber marks, taking care to thoroughly rinse the surface completely. Protect your surroundings with plastic sheeting to guard against any overspray or accidental spills. Always test substrate for color absorption properties before starting. Surfaces with varying porosity may show different color intensities. Hard bur-nished smooth floors may require acid etching or sanding prior to staining to allow better penetration.

Application: Shake container thoroughly for one minute prior to use to ensure full blending of the pigments. Stain can be applied by sprayer, brush or roller. It is recommended that each technique is practiced to witness how the stains performs with each method.

Tru Tint WB may be further diluted by simply adding water** to achieve the desired tint strength. When spraying, it is recommended to use a circular spray pattern tip and apply in a random motion, gently overlapping as needed for coverage. If using brush or roller take great care to avoid heavy application which can leave lap and roller marks. Incidental lines or pool marks may be visually reduced by scrubbing with a brush and water.

Coverage: Coverage can vary from 175 to 350 sq ft per gallon based on the surface porosity.

**Water is the primary diluting agent for the stain but any number of vehicles may be used. Acetone, alcohol, thinner are all eligible carrying vehicles and will result in different results due to dry times and penetrations.. Generally the longer the dry time, the better the penetration will be. All safety pre-cautions should be followed specific to the chemicals chosen.

Sealing: Stained jobs should be treated with a high quality sealer to further lock in color. On vertical mortar projects a matt finish sealer or alternative waterproof treatment may be preferred. Water base sealers should only be sprayed.

Cleanup: Tools and sprayers should be thoroughly cleaned with soap and water.

Warranty: Tru Tint WB is warranted to be merchantable quality when used to instruction herein. Liability under warranty is limited to only product replacement cost if found to be defective.

Tru Tint WB

Tru Tint WB from Waltools is a water-based semi-transparent formula of pigmentation designed to be used on a variety of cured concrete surfaces. The ease of use and large color spectrum makes it an easy choice for contractors and architects who need a simple color solution. Unlike traditional reactive type stains whose results can vary widely based on the uncertainty of that surface, Tru Tint WB produces very consistent results on a variety of surfaces both new and old. Tru Tint WB's ease of use also makes it the de facto choice for correcting and/or enhancing existing color systems and projects.

Easy to apply

Unlimited color selection

Water based formula

Compatible with other color systems

Instant results

Compatible with most any concrete substrate

UV resistant

Ideal for stamped and vertical concrete.

“Like watercolors for concrete. It could not be easier.”

TRU IMPRESSIONS

by Waltools