

INFINITE POWER



C O R P O R A T I O N

WWW.INFINITEPOWERCORP.COM
Fiji +679-927-2354 USA +1-310-980-8276



IPC Energy provides “**Ultra-Modern Wind Turbines**” and “**Waste to Energy Power Plants**” to the world to help reduce the extremely high cost and un-reliability of diesel generators, solar panels, hydro-dams and local power grids to help save the environment and also combat the negative effects and impact of “**Climate Change**”.

Ultra-Modern Wind Turbines

Custom Built Systems Based on the Application, the Location and Amount of Power Required



Ultra-Modern Wind Turbines

Many Sizes and Styles to Choose From Depending on the Application



Ultra-Modern Wind Turbines

Many Sizes and Styles Available for Homes, Commercial Buildings, Villages, Towns, Cities, Islands, Hotels, Resorts, Hospitals, Cell Towers Anywhere that Power is Needed!



Ultra-Modern Wind Turbines are Perfect for Beach Houses and Island Resorts



Ultra-Modern Wind Turbines

Many Pros and No Cons



- Operates w/ 1 mph up to 250 mph / 24 hours a day
- Dozens of Wings vs 2 or 3 Blades
- Magnetic Bearings that last 20+ years
- Zero Friction / Zero Noise / Zero Maintenance
- Rotates with the Direction of the Wind
- 3-phase AC and DC Power Simultaneously
- Mega-Batteries Mounted Underground
- High Quality Stainless Steel and Aluminum
- Perfect for Tropical Island Climates

IPC Clean Energy Robots



3 bladed wind turbines are now obsolete by rings of 555 blades on a 100ft

3 Megawatt

WindRING



Old fashioned turbines were about 500ft dia. WindRING are 100ft for the same power

3 Megawatt

3 Megawatt

Ultra-Modern Wind Turbines Compared to Conventional Dinosaur Wind Turbines

| Conventional 3 | Compare | WindRING 40 |
|-----------------------|-------------------|----------------------|
| 3 Megawatt | Rated Power | 40 Megawatt |
| 3 Wings | Number of Wings | 22,896 Wings |
| 1 Layer | Layers of Wings | 32 Layers |
| Starts at 9 mph | Start Up Speed | Starts at 1 mph |
| 9 mph to 39 mph | Wind Speed Range | 1 mph to 233 mph |
| Expensive | Maintenance | Included |
| \$1 | Cost Per Watt | \$1 |
| \$3M | Machine Cost | \$40M |
| 22 Acres | Land Use | 1/6th of 1 Acre |
| 60 Gallons of Oil | Lubricating Oil | 0 Magnetic Bearings |
| Bursts Into Flame | Oil Leak Effect | No Oil, No Effect |
| Throws Ice 1/4 Mile | Winter Icing | Heated for No Ice |
| Bursts Into Flame | Lightning Strikes | All Metal Grounded |
| Transmission Losses | Gear Friction | No Transmission Loss |
| Transformer Losses | Grid Kv Match | Matching for No Loss |

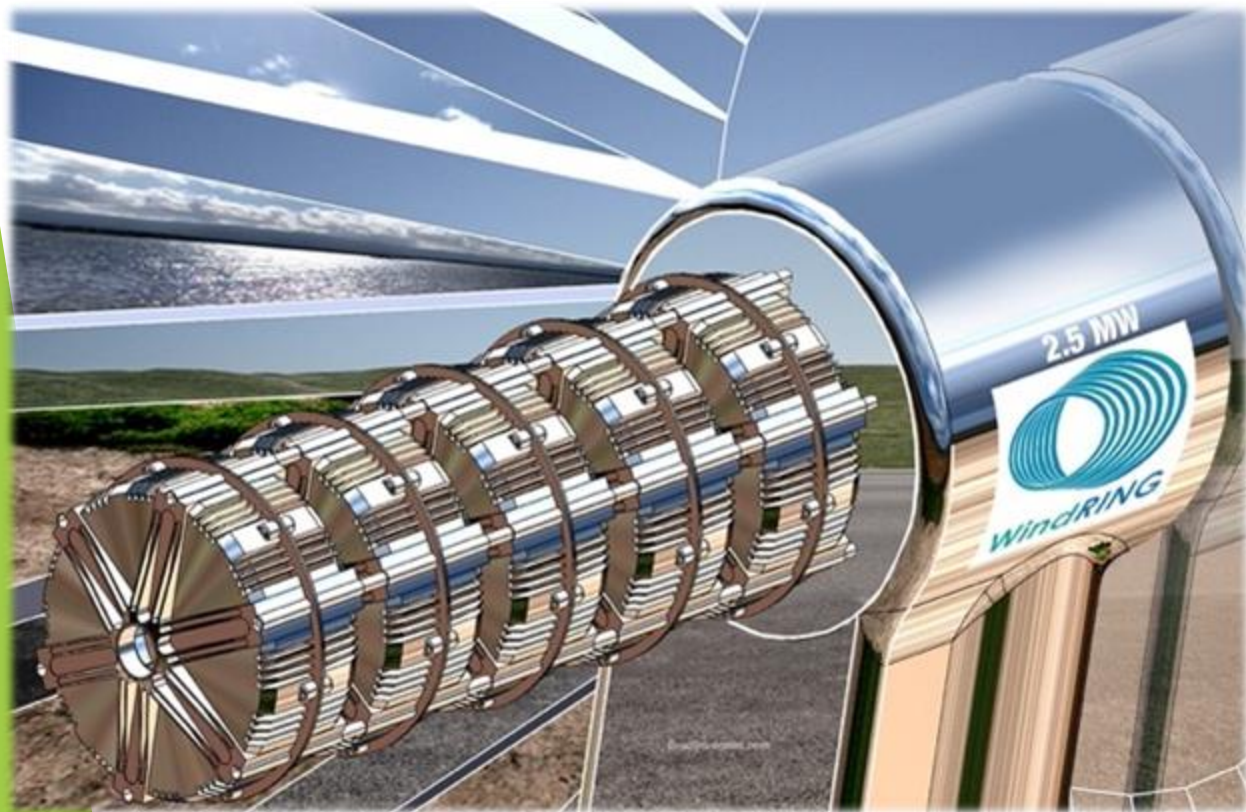
IPC uses Super Hi-Tech and Super Light Weight Generators for all of its Wind Turbine Installations

From 5 Kilowatts up to 5 Megawatts in a Very Small Enclosure



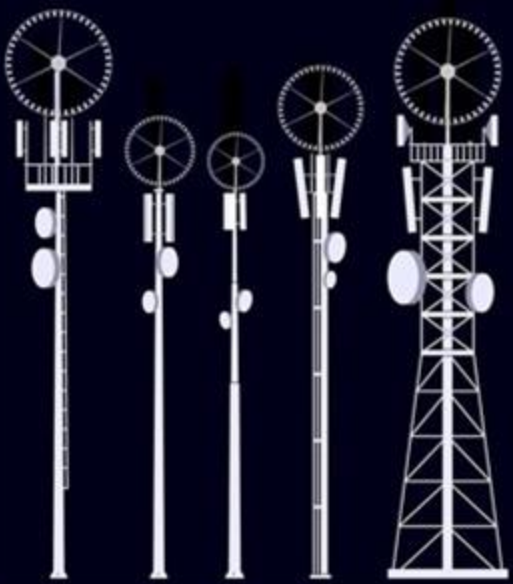
IPC uses Super Hi-Tech and Super Light Weight Generators for all of its Wind Turbine Installations

Multiple Generators can be stacked together on one Wind Turbine to Create Megawatts of Power Making the Overall System Very Light Weight Compared to Any Other System Available



**This is a
1 Megawatt
CLEAN Power
Cell Phone Tower**

If less power is necessary,
the diameter of the
WindRING can be smaller.
Honestly, the Earth needs
more clean power, Let's
make as many large
WindRINGS as practically
possible to power paradise
without pollution.
Any excess clean energy will
be sold to the grid for profit.



Clean Power Cell Phone Towers

**The Power Requirement
For Each Cell Tower
Determines the Size of the
Wind Turbine Needed**

Available Power Outputs

- 10 Kw**
- 20 Kw**
- 100 Kw**
- 250 Kw**
- 500 Kw**
- 1 Megawatt**

CLEAN Power Cell Phone Tower

Folds Down for Cyclones, Hurricanes, Typhoons and Cleaning



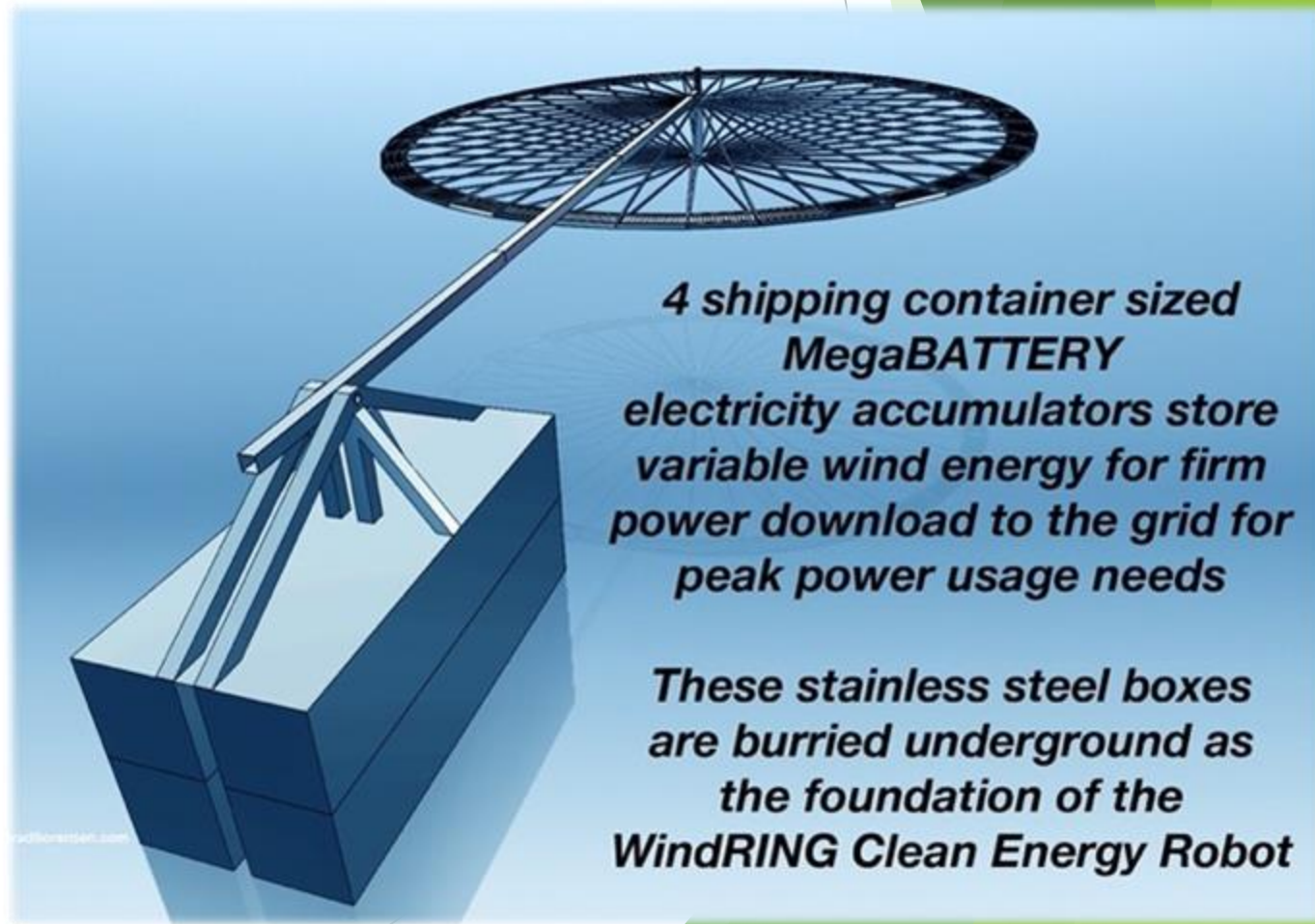
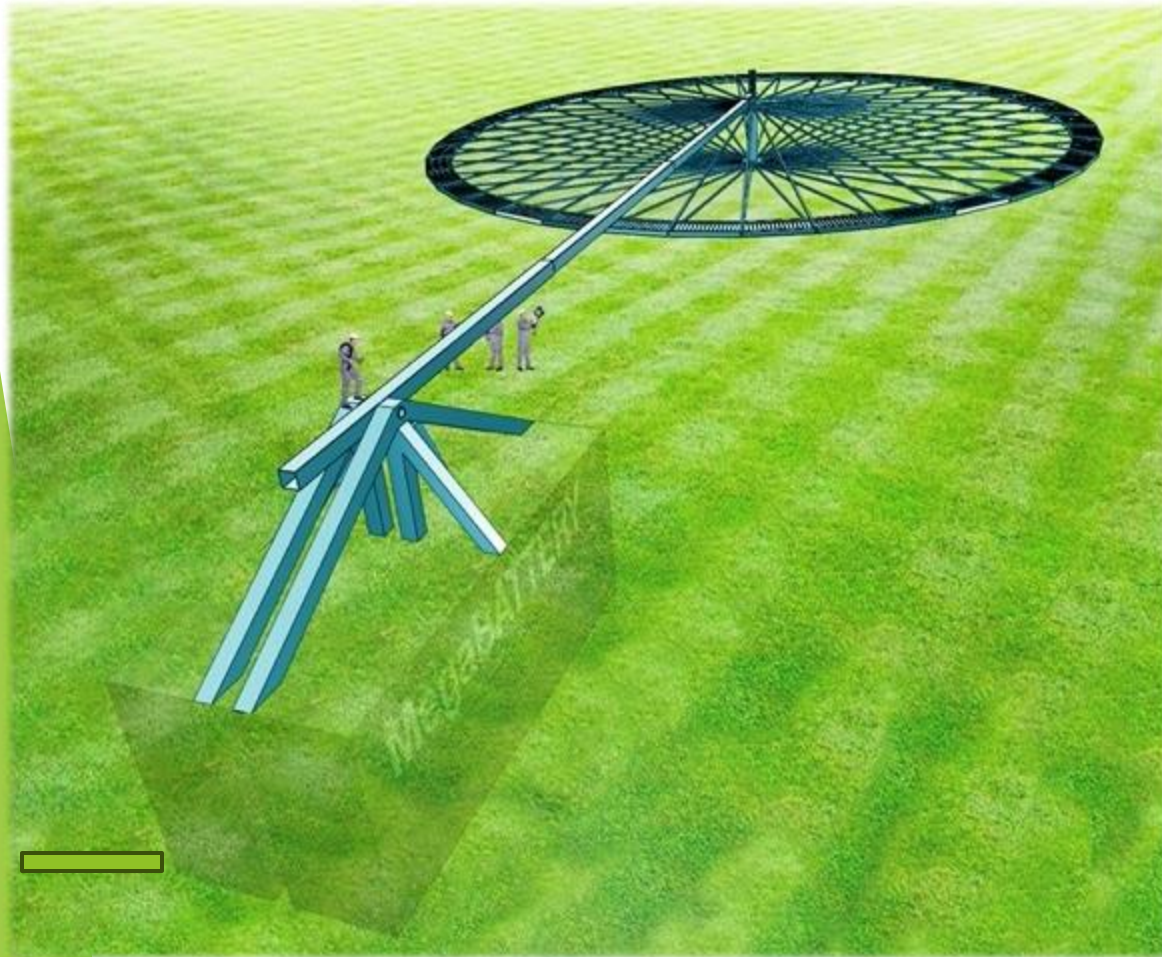
Crane-Less Wind Turbine and/or Cell Phone Tower Installation

A Hydraulic Jack System Raises and Lowers the Wind Turbine / Cell Phone Tower for Protection During Storms and Safety during Maintenance



Crane-Less Wind Turbine and/or Cell Phone Tower Installation With MEGA-BATTERY Installed UNDERGROUND

The Underground Mega-Battery acts as the Foundation for the Ultra-Modern Wind Turbine while the Hydraulic Jack raises and lowers the entire system whenever needed

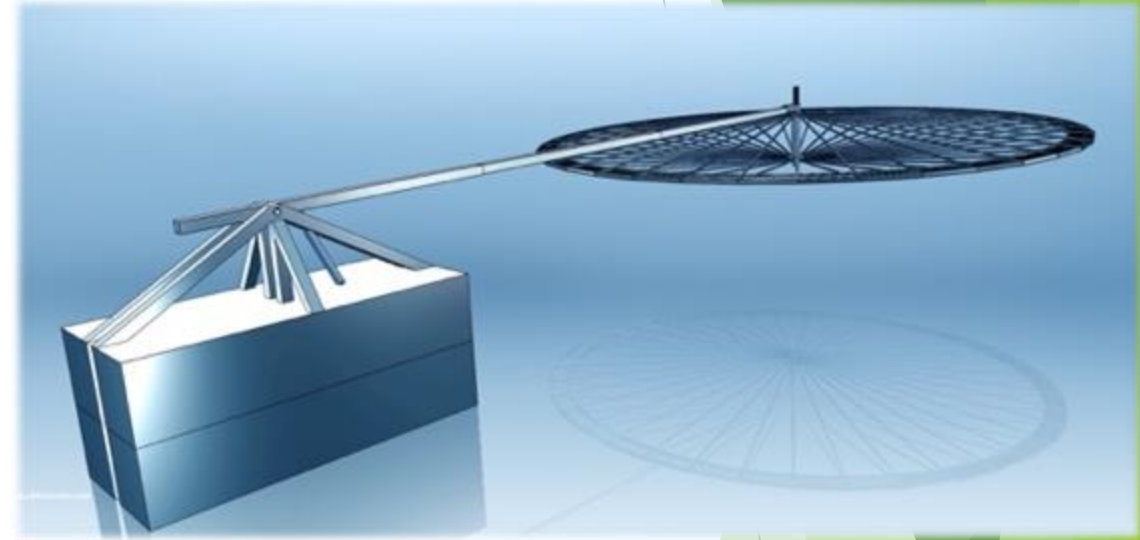


***4 shipping container sized
MegaBATTERY
electricity accumulators store
variable wind energy for firm
power download to the grid for
peak power usage needs***

***These stainless steel boxes
are buried underground as
the foundation of the
WindRING Clean Energy Robot***

Crane-Less Wind Turbine and/or Cell Phone Tower Installation With MEGA-BATTERY Installed UNDERGROUND

No more Dangerous Climbing for Maintenance Crews or Worries about Damage During Cyclones



Clean Power Cell Phone Tower and Electric Vehicle Charging Stations

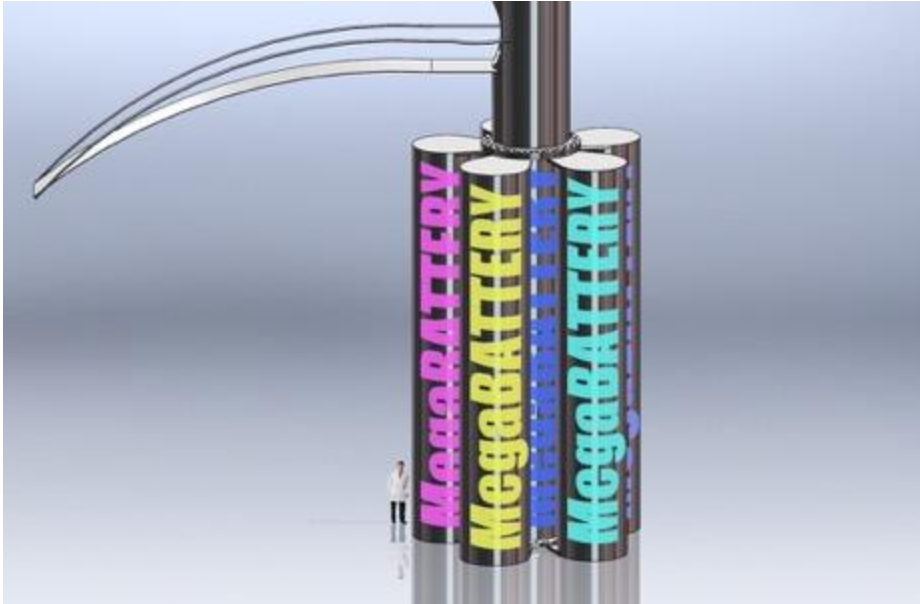
Multi-purpose Systems that Minimize Cost and Maximize Income

- Electric Vehicle Charging Station
- 1 Megawatt Clean Power Wind Turbine
- Clean Power Cell Phone Tower
- Protective Fiberglass Transmitter Enclosure
- Advertising Revenue Opportunity
- Additional Power Available for Nearby Facilities
- Excess Power Can Be Sold to the Grid
- No More Using Fossil Fuels to Power Electric Cars
- 24/7/365 Power Available in any Weather Conditions
- Mega-Battery Back-up
- Zero Maintenance or Fuel Costs
- Zero Harm to the Environment



Mega-Batteries are Buried Underground for the Ultimate form of Power Storage

Our Batteries Store Energy with over 90% Efficiency in a Non-Toxic, Non Corrosive Aqueous Solution



MegaBATTERY

This is an innovative battery that stores energy in organic molecules dissolved in neutral pH water

This battery can run for more than a decade with minimum upkeep, cheap to renew, safe

Battery stores energy, with over 90% efficiency, in nontoxic, noncorrosive aqueous solutions

These petroleum hydrocarbon polymers are inexpensive, without adding any vanadium, rhodium, platinum, lithium or fluorine

Lithium-ion batteries typically don't survive 1,000 complete charge-discharge cycles, this battery loses just 1% of its capacity every 1,000 cycles, that is more than 100 times better

Unlike lithium, this battery can scale from very small to multiple megawatts of grid storage.

These batteries are well suited to store clean energy in the megawatts or gigawatts

This battery liquid is so safe, you can drink it



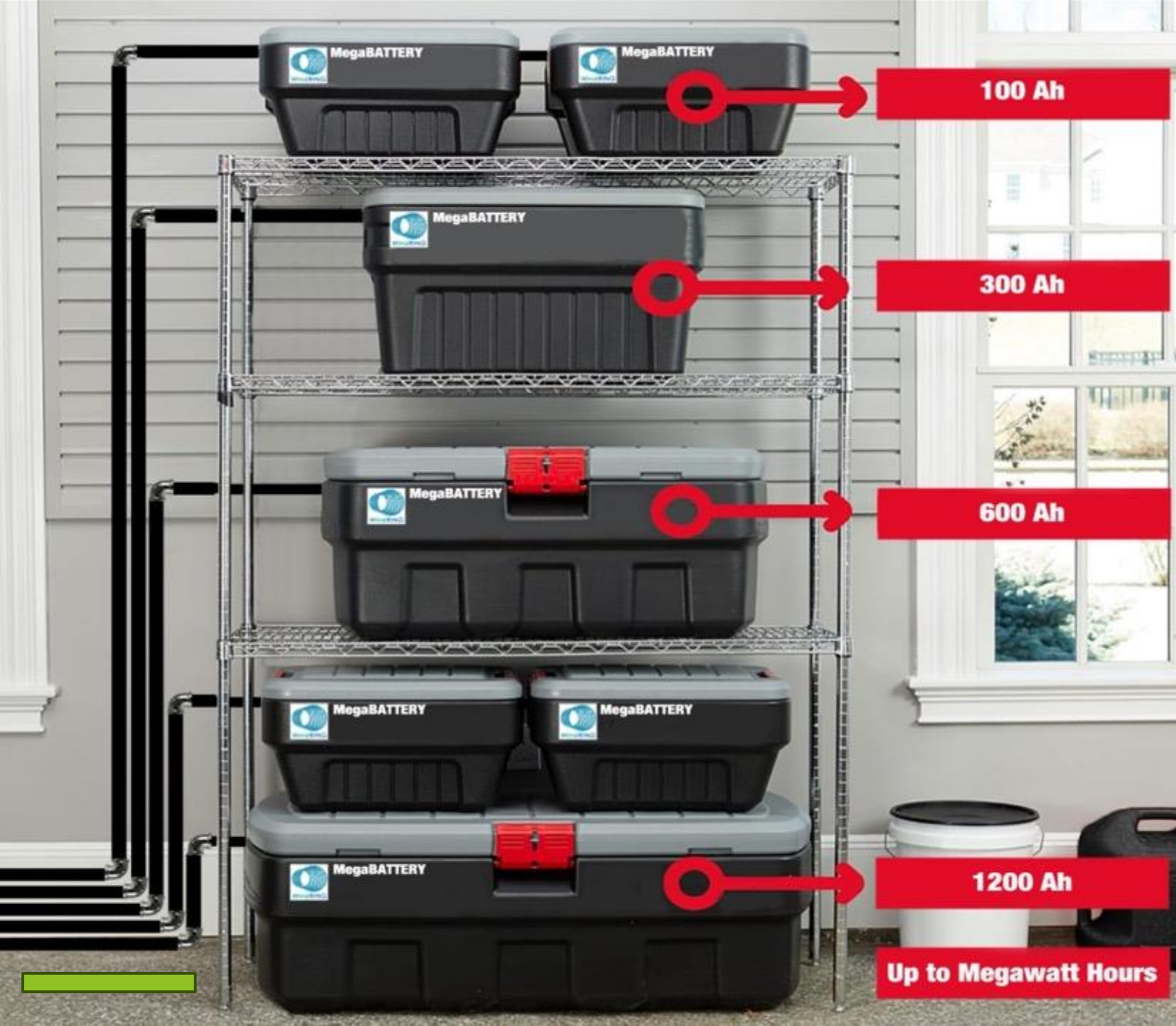
100 Ah

300 Ah

600 Ah

1200 Ah

Up to Megawatt Hours





DOWNLOAD FOR CASH!

CHARGE AND DASH!

The SuperMegaBATTERY semi-truck is a clean energy game changer! Up to 5 MEGAWATTS can be transported, at high freeway speeds, anywhere large amounts of clean energy is needed! Every CLEAN Power Cell Phone Tower has an underground MegaBATTERY for temporary storage of MEGAWATTS for Peak Rate Sales to the grid!



When the underground MegaBATTERY is full, The portable energy truck downloads MEGAWATTS for transport to the electric grid to download for CASH! The underground MegaBATTERY is there to take advantage of the cool underground temperatures to maximize the efficiency of the MegaBATTERY!

INFINITE POWER



C O R P O R A T I O N

WWW.INFINITEPOWERCORP.COM
Fiji +679-927-2354 USA +1-310-980-8276