



# **ESCO Construction Products**

## Specifications for DRP

P7005CON01L0510



## Table of Contents

<b>Caterpillar® Style J Series</b>	
Functional Numbering System	4
J Series Identification Chart	5
MaxDRP™ Replacement Teeth	6
Commodity DRP Replacement Teeth	10
J Series Fasteners	16
<b>Caterpillar Style Rippers</b>	
DRP Ripper Replacement Teeth	17
Ripper Shrouds	21
R Series Fasteners	22
<b>H&amp;L Style Products</b>	
Replacement Teeth	23

## Caterpillar® Style J Series Functional Numbering System

### 4th and 5th Digits Indicate Nose Size

PMID	Nose Size	Excavator	Loader / TLB
1U3202	J200		416 - 436
8E4222	J220	307	446
1U3252	J250	311, 312	916 - 930, 943, 953
1U3302	J300	315, 318, 320	950, 955, 960, 963
1U3352	J350	320, 322, 325	950 - 980C
8E4402	J400	315, 318	980F, 980G
9W8452	J450	330, 345	983, 988, 988B
9W8552	J550	345, 365	990, 992C
7Y0602	J600	365, 375	992D, 992G
4T4702	J700	375	994

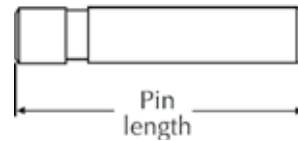
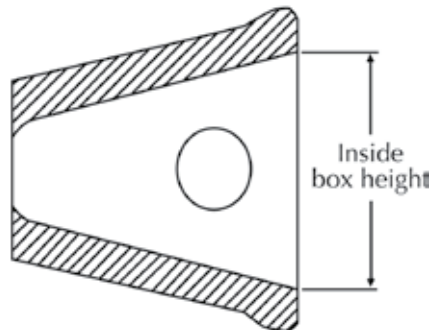
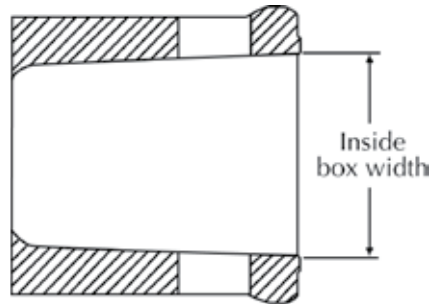
### Last Digit Indicates Shape FEL and Excavator Points:

1U325	<b>1</b>	"1" is Short Point
3G445	<b>2</b>	"2" is Long Point
4T235	<b>3</b>	"3" is Abrasion Point
9J430	<b>9</b>	"9" is Penetration Point
7J955	<b>0</b>	"0" is Wide Point
9W235	<b>8</b>	"8" is Sharp, Corner
9W235	<b>9</b>	"9" is Sharp, Center

# Caterpillar® Style J Series Identification Chart

**J Series Identification Chart**

Nose Size	Inside Box	Inside Box	Pin
	Width mm / in	Height mm / in	Length mm / in
J200	39 / 1.54	44 / 1.73	59 / 2.32
J225	46 / 1.81	57 / 2.26	64 / 2.51
J250	53 / 2.08	65 / 2.57	80 / 3.13
J300	64 / 2.50	73 / 2.89	92 / 3.63
J350	73 / 2.87	80 / 3.16	108 / 4.25
J400	87 / 3.41	90 / 3.53	121 / 4.75
J450/J460	98 / 3.84	97 / 3.83	133 / 5.25
J550	118 / 4.65	107 / 4.21	162 / 6.38
J600	145 / 5.72	128 / 5.02	194 / 7.63
J700	150 / 5.89	138 / 5.43	197 / 7.75





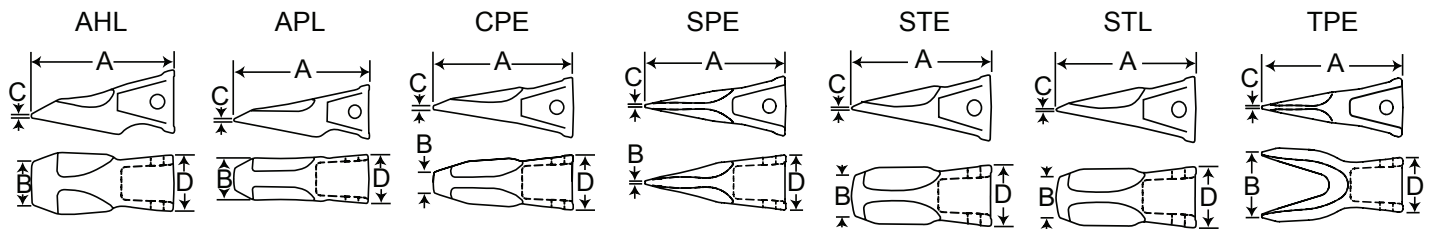
## MaxDRP™ Replacement Teeth

The MaxDRP points are ESCO's premium line of Caterpillar style side pin teeth for loaders and excavators. Each differentiated shape is designed to bring the maximum penetration, wear life, and value.

Nose	Brand	Excavator	Excavator	Excavator	FEL HD	FEL	FEL	FEL HD	FEL	FEL	FEL
		Short	Long	HD Long	Long	Wide	Abrasion	Abrasion	Pick	Twin Pick	Penetration
J200	CAT		1U3202			109-9200	4T2203		9W8209	135-8208	1U3209
	ESCO DRP	1U3201	1U3202			109-9200	4T2203		1U3202TL	1U3209WTL	1U3209
	MaxDRP		<b>200CPE</b>	<b>200CPE</b>							<b>200CPE</b>
J250	CAT	1U3251	1U3252	9N4252	9N4252	3G8250		9N4253	9W8259	135-8258	9J4259
	ESCO DRP	1U3251	1U3252	9N4252	9N4252	3G8250		9N4253	1U3252TL	1U3252WTL	9J4259
	MaxDRP		<b>250STE</b> <b>250CPE</b>	<b>250STE</b> <b>250CPE</b>	<b>250STL</b>						<b>250CPE</b>
J300	CAT	1U3301	1U3302	9N4302	9N4302	107-3300		9N4303	9W8309		
	ESCO DRP	1U3301	1U3302	9N4302	9N4302	107-3300	4T2302	9N4303	1U3302TL	1U3302WTL	9J4309
	MaxDRP		<b>300STE</b> <b>300CPE</b>	<b>300STE</b> <b>300CPE</b>	<b>300STL</b>		<b>300AHL</b> <b>300APL</b>	<b>300AHL</b>	<b>300SPE</b>	<b>300TPE</b>	<b>300CPE</b>
J350	CAT	1U3351	1U3352	9N4352	9N4352	107-3350		9N4353	9W2359	135-9357	9J4359
	ESCO DRP	1U3351	1U3352 1U3352SYL	9N4352	9N4352	8J3350	4T2353	9N4353	1U3352TL	1U3352WTL	9J4359
	MaxDRP		<b>350STE</b> <b>350CPE</b>	<b>350STE</b> <b>350CPE</b>	<b>350STL</b>		<b>350AHL</b> <b>350APL</b>	<b>350AHL</b>	<b>350SPE</b>	<b>350TPE</b>	<b>350CPE</b>
J400	CAT	7T3401	7T3402	8E4402	8E4402	107-3400		7T3403	6Y5409	135-9408	6Y7409
	ESCO DRP		7T3402	8E4402	8E4402			7T3403	7T3402TL	7T3402WTL	6Y7409
	MaxDRP		<b>400STE</b> <b>400CPE</b>	<b>400STE</b> <b>400CPE</b>			<b>400APL</b>		<b>400SPE</b>	<b>400TPE</b>	<b>400CPE</b>
J450	CAT	9W8451	9W8452	9N4452	9N4452	107-3450		9N4453	7T8459	138-6458	9W8459
	ESCO DRP	9W8451	9W8452 9W8452SYL	9N4452	9N4452		9W1453	9N4453	9W8459V	1U3452WTL	9W8459
	MaxDRP		<b>450STE</b> <b>450CPE</b>	<b>450STE</b> <b>450CPE</b>	<b>450STL</b>		<b>450AHL</b> <b>450APL</b>	<b>450AHL</b>	<b>450SPE</b>	<b>450TPE</b>	<b>450CPE</b>
J550	CAT	9W84551	9W8552	9N4552	9N4552	107-3550		6Y2553	9W6559	138-6558	9W8559
	ESCO DRP	9W8551	9W8552	9N4552	9N4552		9W1553	6Y2553	1U3552TL	1U3552WTL	9W8559
	MaxDRP		<b>550CPE</b>	<b>550CPE</b>	<b>550STL</b>		<b>550AHL</b> <b>550APL</b>	<b>550AHL</b>	<b>550SPE</b>	<b>550TPE</b>	<b>550CPE</b>
J600	CAT	6I6601	6I6602	7Y0602	7Y0602			6I6603	107-8609	135-9608	7I7609
	ESCO DRP		6I6602	7Y0602	7Y0602			6I6603			7I7609
	MaxDRP		<b>600CPE</b>	<b>600CPE</b>			<b>600AHL</b> <b>600APL</b>	<b>600AHL</b>	<b>600SPE</b>	<b>600TPE</b>	<b>600CPE</b>
J700	CAT		4T4702	9U9702	9U9702		4T4703	9U9703			4T4709
	ESCO DRP		4T4702				4T4703				4T4709
	MaxDRP		<b>700CPE</b>	<b>700CPE</b>			<b>700APL</b>		<b>700SPE</b>	<b>700TPE</b>	<b>700CPE</b>

## MaxDRP™ Replacement Teeth

J200-J300



J200

Pattern No.	Description	A Length mm / in	B Bit Width mm / in	C Bit Thickness mm / in	D Width at Rear mm / in	Wt. kg / lb	Pin	Lock
200CPE	Chisel Penetration Excavator	167 / 6.58	23 / 0.92	4 / 0.14	58 / 2.28	1.5 / 3.2	9W7112	8E6209

J250

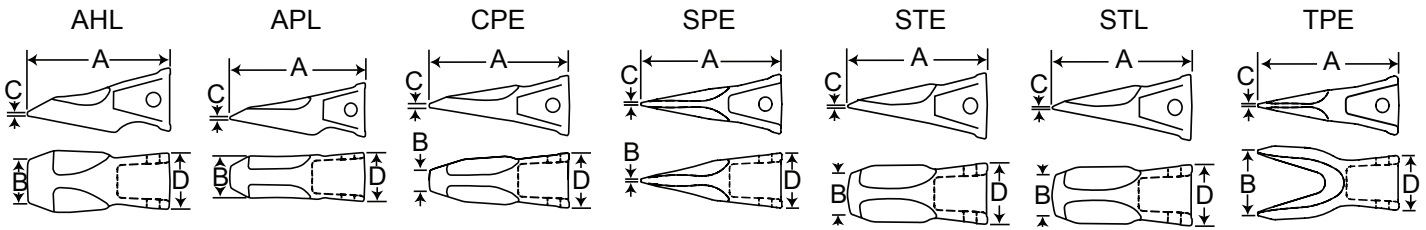
Pattern No.	Description	A Length mm / in	B Bit Width mm / in	C Bit Thickness mm / in	D Width at Rear mm / in	Wt. kg / lb	Pin	Lock
250STE	Standard Excavator	207 / 8.16	56 / 2.21	3 / 0.13	77 / 3.02	2.9 / 6.4	9J2258	8E6259
250CPE	Chisel Penetration Excavator	217 / 8.56	30 / 1.20	5 / 0.21	77 / 3.05	3.1 / 6.9	9J2258	8E6259
250STL	Standard Loader	212 / 8.34	41 / 1.63	3 / 0.13	77 / 3.02	3.3 / 7.2	9J2208	8E6259

J300

Pattern No.	Description	A Length mm / in	B Bit Width mm / in	C Bit Thickness mm / in	D Width at Rear mm / in	Wt. kg / lb	Pin	Lock
300STE	Standard Excavator	238 / 9.38	60 / 2.38	4 / 0.15	92 / 3.62	4.8 / 10.6	9J2308	8E6259
300CPE	Chisel Penetration Excavator	250 / 9.84	36 / 1.43	6 /	93 / 3.66	5.4 / 11.8	9J2308	8E6259
300SPE	Single Pick Excavator	250 / 9.84	6 / 0.22	5 / 0.18	92 / 3.63	4.4 / 9.7	9J2308	8E6259
300TPE	Twin Pick Excavator	250 / 9.84	130 / 5.13	5 / 0.18	92 / 3.63	4.8 / 10.5	9J2308	8E6259
300STL	Standard Loader	244 / 9.60	51 / 2.00	4 / 0.17	91 / 3.58	5.3 / 11.6	9J2308	8E6259
300APL	Abrasion Penetration Loader	270 / 10.62	42 / 1.67	4 / 0.17	92 / 3.62	7.1 / 15.6	9J2308	8E6259
300AHL	Abrasion Heavy Loader	245 / 9.63	73 / 2.89	6 /	92 / 3.62	7.1 / 15.6	9J2308	8E6259

# MaxDRP™ Replacement Teeth

J350-J450/J460



## J350

Pattern No.	Description	A	B	C	D	Wt. kg / lb	Pin	Lock
		Length mm / in	Bit Width mm / in	Bit Thickness mm / in	Width at Rear mm / in			
350STE	Standard Excavator	267 / 10.51	73 / 2.89	4 / 0.16	107 / 4.23	7.0 / 15.5	9J2358	8E6359
350CPE	Chisel Penetration Excavator	279 / 11.00	43 / 1.69	7 / 0.27	107 / 4.23	7.3 / 16.1	9J2358	8E6259
350SPE	Single Pick Excavator	279 / 11.00	6 / 0.25	5 / 0.20	109 / 4.28	5.9 / 13.0	9J2358	8E6259
350TPE	Twin Pick Excavator	279 / 11.00	145 / 5.70	5 / 0.20	108 / 4.25	6.8 / 15.0	9J2358	8E6259
350STL	Standard Loader	273 / 10.74	71 / 2.80	4 / 0.16	107 / 4.21	7.6 / 16.8	9J2358	8E6259
350APL	Abrasion Penetration Loader	302 / 11.88	51 / 2.00	5 / 0.19	107 / 4.21	9.7 / 21.4	9J2358	8E6259
350AHL	Abrasion Heavy Loader	274 / 10.79	82 / 3.23	7 / 0.28	107 / 4.21	9.9 / 21.8	9J2358	8E6259

## J400

Pattern No.	Description	A	B	C	D	Wt. kg / lb	Pin	Lock
		Length mm / in	Bit Width mm / in	Bit Thickness mm / in	Width at Rear mm / in			
400STE	Standard Excavator	294 / 11.56	81 / 3.18	5 / 0.20	123 / 4.83	10.0 / 21.9	7T3408	8E8409
400CPE	Chisel Penetration Excavator	308 / 12.12	49 / 1.91	9 / 0.35	125 / 4.91	10.8 / 23.8	7T3408	8E8409
400SPE	Single Pick Excavator	308 / 12.12	7 / 0.28	6 / 0.23	123 / 4.83	8.6 / 19.0	7T3408	8E8409
400TPE	Twin Pick Excavator	308 / 12.12	161 / 6.32	6 / 0.23	123 / 4.83	9.3 / 20.4	7T3408	8E8409
400APL	Abrasion Heavy Loader	332 / 13.08	56 / 2.21	6 / 0.23	123 / 4.83	14.1 / 31.0	7T3408	8E8409

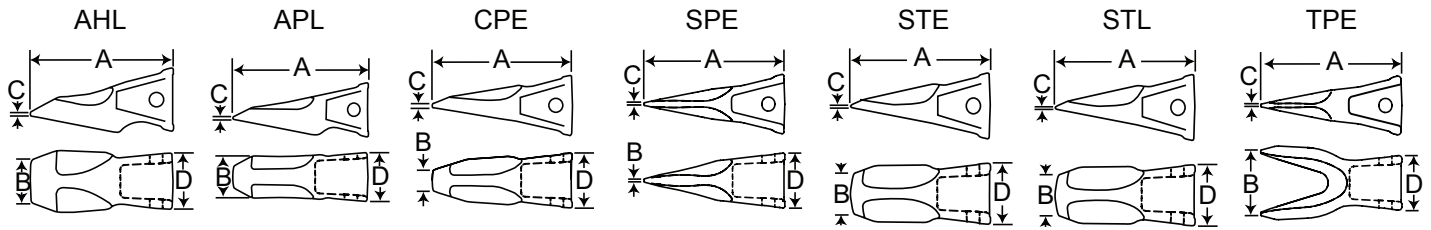
## J450/J460

Pattern No.	Description	A	B	C	D	Wt. kg / lb	Pin	Lock
		Length mm / in	Bit Width mm / in	Bit Thickness mm / in	Width at Rear mm / in			
450STE	Standard Excavator	329 / 12.95	91 / 3.59	5 / 0.19	139 / 5.46	13.7 / 30.1	8E0468	8E8469
450CPE	Chisel Penetration Excavator	347 / 13.68	52 / 2.05	9 / 0.34	140 / 5.52	14.8 / 32.5	8E0468	8E8469
450SPE	Single Pick Excavator	345 / 13.58	8 / 0.31	6 / 0.24	135 / 5.31	10.5 / 23.2	8E0468	8E8469
450TPE	Twin Pick Excavator	345 / 13.58	182 / 7.15	6 / 0.24	135 / 5.31	12.7 / 27.9	8E0468	8E8469
450STL	Standard Loader	336 / 13.24	76 / 3.00	5 / 0.18	139 / 5.46	15.0 / 33.0	8E0468	8E8469
450APL	Abrasion Penetration Loader	372 / 14.65	64 / 2.50	6 / 0.22	139 / 5.46	19.1 / 42.0	8E0468	8E8469
450AHL	Abrasion Heavy Loader	338 / 13.29	103 / 4.04	8 / 0.33	139 / 5.46	19.5 / 43.0	8E0468	8E8469



## MaxDRP™ Replacement Teeth

J550-J700



J550

Pattern No.	Description	A	B	C	D	Wt.	Pin	Lock
		Length	Bit Width	Bit Thickness	Width at Rear			
		mm / in	mm / in	mm / in	mm / in	kg / lb		
550CPE	Chisel Penetration Excavator	379 / 14.94	70 / 2.74	9 / 0.35	165 / 6.50	20.0 / 44.0	9W9026	8E5559
550SPE	Single Pick Excavator	379 / 14.94	10 / 0.40	7 / 0.27	160 / 6.30	15.9 / 35.0	9W9026	8E5559
550TPE	Twin Pick Excavator	379 / 14.94	221 / 8.72	7 / 0.27	160 / 6.30	17.5 / 38.5	9W9026	8E5559
550STL	Standard Loader	370 / 14.57	86 / 3.37	6 / 0.23	165 / 6.50	20.5 / 45.0	9W9026	8E5559
550APL	Abrasion Penetration Loader	409 / 16.11	82 / 3.24	6 / 0.22	165 / 6.49	25.9 / 57.0	9W9026	8E5559
550AHL	Abrasion Heavy Loader	409 / 16.11	144 / 5.66	11 / 0.42	165 / 6.49	29.1 / 64.0	9W9026	8E5559

J600

Pattern No.	Description	A	B	C	D	Wt.	Pin	Lock
		Length	Bit Width	Bit Thickness	Width at Rear			
		mm / in	mm / in	mm / in	mm / in	kg / lb		
600CPE	Chisel Penetration Excavator	436 / 17.18	85 / 3.35	14 / 0.56	221 / 8.72	39.1 / 86.0	6I6608	6I6609
600SPE	Single Pick Excavator	436 / 17.18	11 / 0.45	8 / 0.33	201 / 7.92	30.2 / 66.5	6I6608	6I6609
600TPE	Twin Pick Excavator	436 / 17.18	266 / 10.46	8 / 0.33	201 / 7.92	33.0 / 72.5	6I6608	6I6609
600APL	Abrasion Heavy Loader	471 / 18.53	99 / 3.91	8 / 0.32	206 / 8.12	53.2 / 117.0	6I6608	6I6609
600AHL	Abrasion Heavy Loader	427 / 16.81	169 / 6.64	13 / 0.52	206 / 8.12	54.5 / 120.0	6I6608	6I6609

J700

Pattern No.	Description	A	B	C	D	Wt.	Pin	Lock
		Length	Bit Width	Bit Thickness	Width at Rear			
		mm / in	mm / in	mm / in	mm / in	kg / lb		
700CPE	Chisel Penetration Excavator	418 / 16.44	/ 7.07	13 / 0.50	208 /	45.5 / 100.0	4T4708	4T4707
700SPE	Single Pick Excavator	470 / 18.52	12 / 0.47	9 / 0.35	210 /	30.9 / 68.0	4T4708	4T4707
700TPE	Twin Pick Excavator	470 / 18.52	275 /	9 / 0.35	210 /	36.4 / 80.0	4T4708	4T4707
700APL	Abrasion Penetration Loader	506 / 19.94	102 / 4.03	8 / 0.31	212 /	59.2 / 130.3	4T4708	4T4707



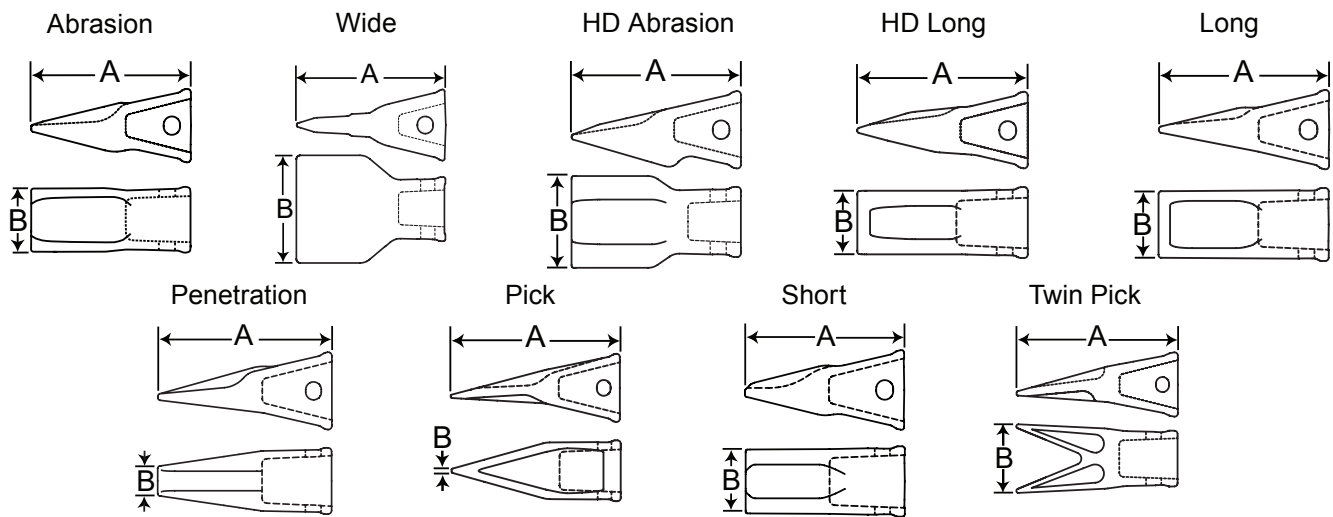
## Caterpillar® Style Commodity DRP Replacement Teeth

Using the Caterpillar unique numbering system, ESCO has developed the Standard DRP offering of Caterpillar style side pin teeth for loaders and excavators.

Nose	Brand	Standard								HD	HD	HD	ARP HD
		Long	Short	Excavator	Abrasion	Penetration	Wide	Pick	Twin Pick	Long	Abrasion	Penetration	
J200	ESCO	1U3202	1U3201		4T2203	1U3209	109-9200	1U3202TL	1U3202WTL				
	BLACK CAT	1U3202	1U3201			1U3209	109-9200	J200 Tiger	J200 Twin				
	CAT	1U3202			4T2203	1U3209	109-9200	9W8209	135-8208				
J225	ESCO	6Y3222											
	BLACK CAT	6Y3222	6Y6221			6Y8229	186-3010	J225 Tiger	J225 Twin	8E4222	J225HDAL		
	CAT	6Y6222	6Y6221			6Y8229		6Y7229	135-8228	8E4222	6Y6223		
J250	ESCO	1U3252	1U3251			9J4259	3G8250	1U3252TL	1U3252WTL	9N4252	9N4253		
	BLACK CAT	1U3252	1U3251			9J4259	208-5254	J250 Tiger	J250 Twin	9N4252	J250HDAL	J250HP	
	CAT	1U3252	1U3251			9J4259	208-5254	9W8259	135-8258	9N4252	9N4253		
J300	ESCO	1U3302	1U3301		4T2302	9J4309	107-3300	1U3302TL	1U3302WTL	9N4302	9N4303		
	BLACK CAT	1U3302	1U3301			9J4309	107-3300	J300 Tiger	J300 Twin	9N4302	J300HDAL	135-9300	
	CAT	1U3302	1U3301			9J4309	107-3300	9W8309	135-9308	9N4302	9N4303	135-9300	
J350	ESCO	1U3352	1U3351	1U3352SYL	4T2353	9J4359	8J3350	1U3352TL	1U3352WTL	9N4352	9N4353		
	BLACK CAT	1U3352	1U3351			9J4359	107-3350	J350 Tiger	J350 Twin	9N4352	J350HDAL	144-1358	
	CAT	1U3352	1U3351			9J4359	107-3350	9W2359	135-9357	9N4352		144-1358	
J400	ESCO	7T3402				6Y7409		7T3402TL	7T3402WTL	8E4402	7T3403	135-9400	
	BLACK CAT	7T3402	7T3401			6Y7409	107-3400	J400 Tiger	J400 Twin	8E4402	J400HDAL	135-9400	
	CAT	7T3402	7T3401			6Y7409	107-3400	6Y5409	135-9408	8E4402	7T3403	135-9400	
J450	ESCO	9W8452	9W8451	9W8452SYL	9W1453	9W8459		9W8459V	1U3452WTL	9N4452	9N4453		
	BLACK CAT	9W8452	9W8451			9W8459	107-3450	J450 Tiger	J450 Twin	9N4452	J450HDAL	138-6451	
	CAT	9W8452	9W8451			9W8459	107-3450	7T8459	138-6458	9N4452	9N4453	138-6451	
J550	ESCO	9W8552	9W8551		9W1553	9W8559		1U3552TL	1U3552WTL	9N4552	6Y2553		
	BLACK CAT	9W8552	9W8551			9W8559	107-3550	J550 Tiger	J550 Twin	9N4552	J550HDAL	138-6552	
	CAT	9W8552	9W8551			9W8559	107-3550	9W6559	138-6558	9N4552	6Y2553	138-6552	
J600	ESCO	6I6602				7I7609				7Y0602	6I6603	135-9600	6I6603ARP2
	BLACK CAT	6I6602				7I7609		J600 Tiger	J600 Twin	7Y0602	J600HDAL	135-9600	
	CAT	6I6602	6I6601			7I7609		107-8609	135-9608	7Y0602	6I6603	135-9600	
J700	ESCO	4T4702			4T4703	4T4709						135-9700	4T4703ARP2
	BLACK CAT	4T4702									J700HDAL	135-9700	
	CAT	4T4702			4T4703	4T4709				9U9702	9U9703	135-9700	
J800	ESCO					117-6809							
	BLACK CAT									6I8802	J800HDAL	135-9800	
	CAT					117-6809					6I8803		

## Caterpillar® Style Commodity DRP Replacement Teeth

### J200-J250



### J200

Pattern No.	Description	A	B	Weight kg / lb	Pin	Lock
		Length mm / in	Bit Width mm / in			
1U3202	Long	133 / 5.24	49 / 1.93	1.1 / 2.5	9W7112	8E6209
1U3201	Short	136 / 5.35	50 / 1.97	1.3 / 2.8	9W7112	8E6209
4T2203	Abrasion	150 / 5.91	61 / 2.40	1.3 / 2.8	9W7112	8E6209
1U3209	Penetration	136 / 5.35	26 / 1.02	1.0 / 2.2	9W7112	8E6209
109-9200	Wide	153 / 6.02	106 / 4.17	1.8 / 3.9	9W7112	8E6209
1U3202TL	Pick	160 / 6.30	5 / 0.20	1.3 / 2.9	9W7112	8E6209
1U3202WTL	Twin Pick	155 / 6.10	65 / 2.56	1.3 / 2.9	9W7112	8E6209

### J225

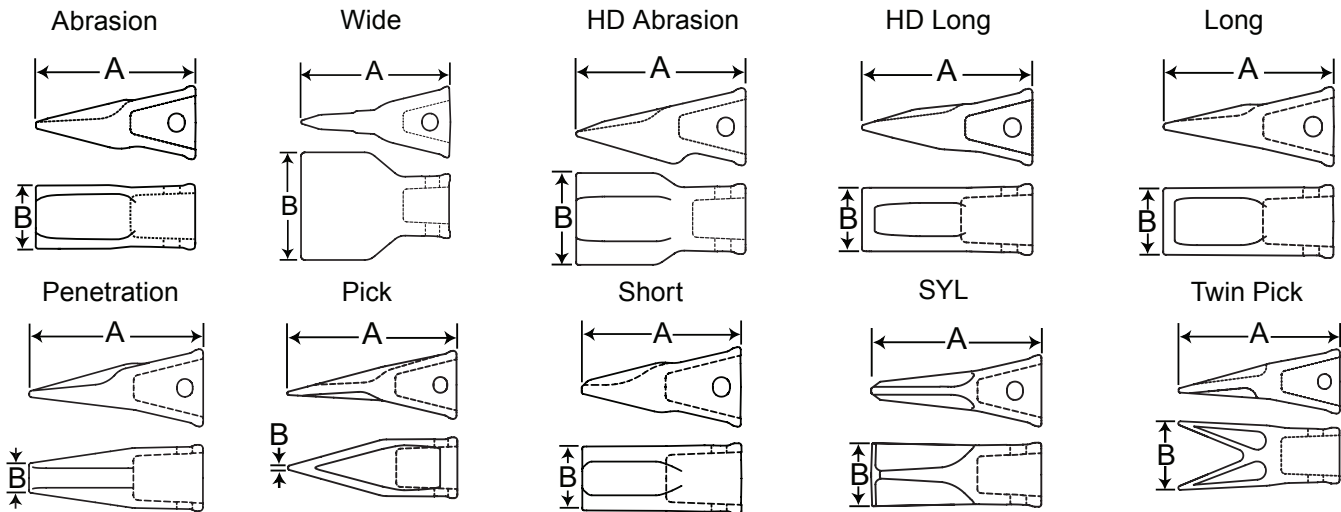
Pattern No.	Description	A	B	Weight kg/ lb	Pin	Lock
		Length mm / in	Bit Width mm / in			
6Y3222	Long	165 / 6.50	57 / 2.24	2.0 / 4.4	6Y3228	8E6259

### J250

Pattern No.	Description	A	B	Weight kg / lb	Pin	Lock
		Length mm / in	Bit Width mm / in			
1U3252	Long	191 / 7.52	64 / 2.52	3.0 / 6.6	9J2258	8E6259
1U3251	Short	176 / 6.93	58 / 2.28	2.4 / 5.3	9J2258	8E6259
9J4259	Penetration	194 / 7.64	33 / 1.30	2.2 / 4.9	9J2258	8E9259
3G8250	Wide	198 / 7.80	114 / 4.49	3.6 / 8.0	9J2258	8E6259
1U3252TL	Pick	217 / 8.54	8 / 0.31	3.3 / 7.3	9J2258	8E6259
1U3252WTL	Twin Pick	282 / 11.10	88 / 3.46	3.2 / 7.1	9J2258	8E6259
9N4252	HD Long	198 / 7.80	56 / 2.20	4.0 / 8.7	9J2258	8E6259
9N4253	HD Abrasion	197 / 7.76	98 / 3.86	5.5 / 12.1	9J2258	8E6259

## Caterpillar® Style Commodity DRP Replacement Teeth

J300-J350



J300

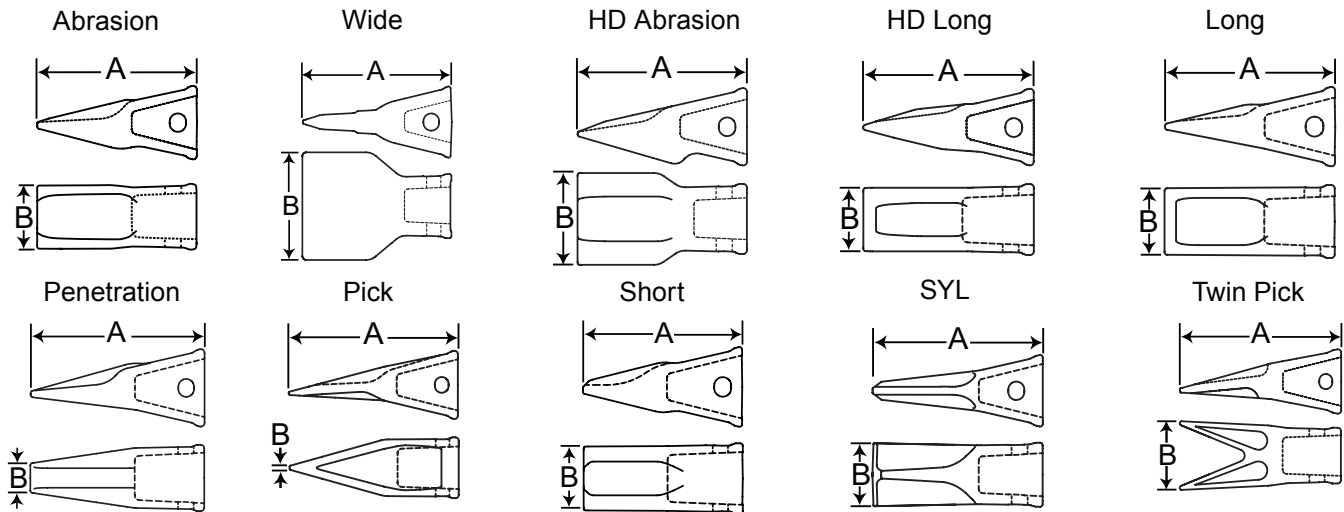
Pattern No.	Description	A	B	Weight kg/ lb	Pin	Lock
		Length mm / in	Bit Width mm / in			
1U3302	Long	222 / 8.74	89 / 3.50	5.5 / 12.1	9J2308	8E6259
1U3301	Short	198 / 7.80	72 / 2.83	4.0 / 8.7	9J2308	8E6259
4T2303	Abrasion	226 / 8.90	96 / 3.78	5.4 / 11.9	9J2308	8E6259
9J4309	Penetration	223 / 8.78	36 / 1.42	3.6 / 7.9	9J2308	8E6259
107-3300	Wide	213 / 8.39	51 / 2.01	6.0 / 13.2	9J2308	8E6259
1U3302TL	Pick	247 / 9.72	8 / 0.31	4.5 / 9.9	9J2308	8E6259
1U3302WTL	Twin Pick	242 / 9.53	104 / 4.09	5.2 / 11.5	9J2308	8E6259
9N4302	HD Long	235 / 9.25	83 / 3.27	5.9 / 12.9	9J2308	8E6259
9N4303	HD Abrasion	227 / 8.94	114 / 4.49	7.8 / 17.2	9J2308	8E6259

J350

Pattern No.	Description	A	B	Weight kg/ lb	Pin	Lock
		Length mm / in	Bit Width mm / in			
1U3352	Long	244 / 9.61	95 / 3.74	6.8 / 14.9	9J2358	8E6359
1U3351	Short	218 / 8.58	93 / 3.66	5.5 / 12.1	9J2358	8E6359
1U3352SYL	SYL	267 / 10.51	104 / 4.09	7.0 / 15.3	9J2358	8E6359
4T2353	Abrasion	240 / 9.45	33 / 1.30	7.7 / 17.0	9J2358	8E6359
9J4359	Penetration	238 / 9.37	54 / 2.13	4.8 / 10.6	9J2358	8E6359
8J3350	Wide	241 / 9.49	171 / 6.73	8.3 / 18.3	9J2358	8E6359
1U3352TL	Pick	291 / 11.46	8 / 0.31	5.0 / 11.0	9J2358	8E6359
1U3352WTL	Twin Pick	286 / 11.24	114 / 4.49	6.5 / 14.3	9J2358	8E6359
9N4352	HD Long	258 / 10.16	96 / 3.78	8.8 / 19.4	9J2358	8E6359
9N4353	HD Abrasion	258 / 10.16	140 / 5.51	11.3 / 24.9	9J2358	8E6359

## Caterpillar® Style Commodity DRP Replacement Teeth

J400-J450/J460



J400

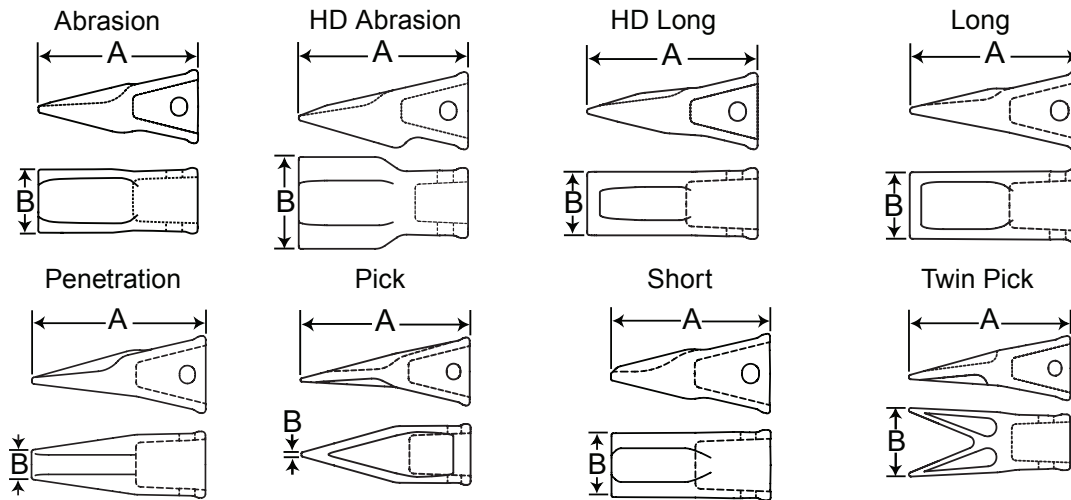
Pattern No.	Description	A	B	Weight kg/ lb	Pin	Lock
		Length mm / in	Bit Width mm / in			
7T3402	Long	276 / 10.87	143 / 5.63	9.5 / 20.8	7T3408	8E8409
6Y7409	Penetration	274 / 10.79	50 / 1.97	8.1 / 17.9	7T3408	8E8409
7T3402TL	Pick	321 / 12.64	6 / 0.24	9.4 / 20.6	7T3408	8E8409
7T3402WTL	Twin Pick	318 / 12.52	125 / 4.92	10.8 / 23.9	7T3408	8E8409
8E4402	HD Long	283 / 11.14	102 / 4.02	12.0 / 26.5	7T3408	8E8409
7T3403	HD Abrasion	273 / 10.75	142 / 5.59	15.9 / 34.9	7T3408	8E8409
135-9400	HD Penetration	315 / 12.40	36 / 1.42	16.7 / 36.8	7T3408	8E8409

J450/J460

Pattern No.	Description	A	B	Weight kg/ lb	Pin	Lock
		Length mm / in	Bit Width mm / in			
9W8452	Long	302 / 11.89	114 / 4.49	12.9 / 28.4	8E0468	8E8469
9W8451	Short	269 / 10.59	112 / 4.41	10.5 / 23.2	8E0468	8E8469
9W8452SYL	SYL	324 / 12.76	127 / 5.00	14.0 / 30.9	8E0468	8E8469
9W1453	Abrasion	290 / 11.42	116 / 4.57	12.2 / 26.9	8E0468	8E8469
9W8459	Penetration	298 / 11.73	52 / 2.05	9.9 / 21.8	8E0468	8E8469
9W8459V	Pick	330 / 12.99	51 / 2.01	9.7 / 21.3	8E0468	8E8469
1U3452WTL	Twin Pick	360 / 14.17	146 / 5.75	13.3 / 29.3	8E0468	8E8469
9N4452	HD Long	313 / 12.32	112 / 4.41	16.2 / 35.7	8E0468	8E8469
9N4453	HD Abrasion	318 / 12.52	166 / 6.54	21.5 / 47.4	8E0468	8E8469

## Caterpillar® Style Commodity DRP Replacement Teeth

J550

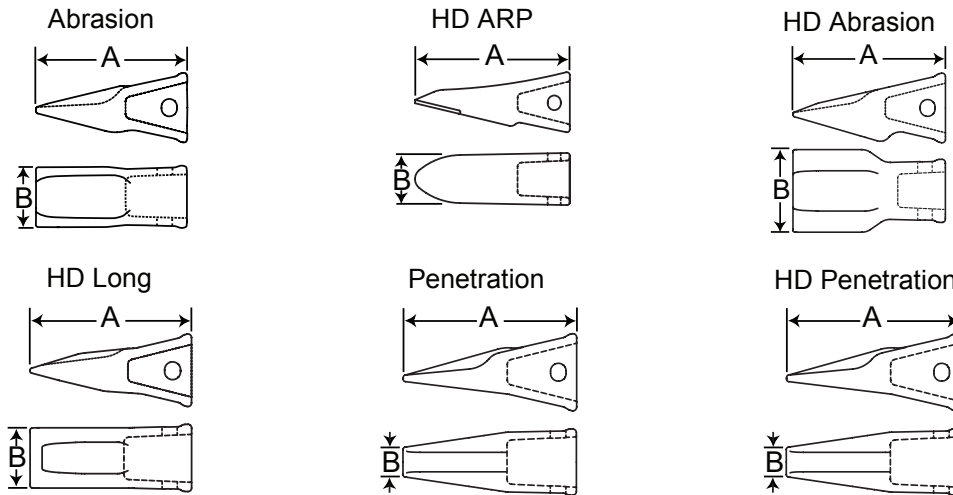


J550

Pattern No.	Description	A		B		Weight		Pin	Lock
		Length	mm / in	Bit Width	mm / in	kg/	lb		
9W8552	Long	334	13.15	152	5.98	19.0	41.9	9W9026	8E5559
9W8551	Short	309	12.17	140	5.51	16.0	35.3	9W9026	8E5559
9W1553	Abrasion	374	14.72	170	6.69	25.3	55.6	9W9026	8E5559
9W8559	Penetration	345	13.58	57	2.24	17.5	38.4	9W9026	8E5559
1U3552TL	Pick	404	15.91	13	0.51	19.0	41.9	9W9026	8E5559
1U3552WTL	Twin Pick	410	16.14	168	6.61	20.1	44.2	9W9026	8E5559
9N4552	HD Long	361	14.21	141	5.55	25.3	55.6	9W9026	8E5559
6Y2553	HD Abrasion	369	14.53	183	7.20	33.6	73.9	9W9026	8E5559

## Caterpillar® Style Commodity DRP Replacement Teeth

J600-J800



J600

Pattern No.	Description	A	B	Weight kg/ lb	Pin	Lock
		Length mm / in	Bit Width mm / in			
6I6602	Long	402 / 15.83	167 / 6.57	29.6 / 65.0	6I6608	6I6609
7I7609	Penetration	397 / 15.63	82 / 3.23	32.0 / 70.5	6I6608	6I6609
7Y0602	HD Long	432 / 17.01	178 / 7.01	42.7 / 94.0	6I6608	6I6609
6I6603	HD Abrasion	432 / 17.01	241 / 9.49	59.1 / 130.0	6I6608	6I6609
135-9600	HD Penetration	453 / 17.83	47 / 1.85	54.1 / 119.0	6I6608	6I6609
6I6603ARP2	HD ARP	455 / 17.91	191 / 7.52	59.5 / 131.0	6I6608	6I6609

J700

Pattern No.	Description	A	B	Weight kg/ lb	Pin	Lock
		Length mm / in	Bit Width mm / in			
4T4702	Long	418 / 16.46	180 / 7.09	41.4 / 91.0	4T4708	4T4707
4T4703	Abrasion	425 / 16.73	229 / 9.02	53.6 / 118.0	4T4708	4T4707
4T4709	Penetration	432 / 17.01	89 / 3.50	36.4 / 80.0	4T4708	4T4707
135-9700	HD Penetration	466 / 18.35	50 / 1.97	63.1 / 138.9	4T4708	4T4707
4T4703ARP	HD ARP	508 / 20.00	191 / 7.52	51.8 / 114.0	4T4708	4T4707

J800

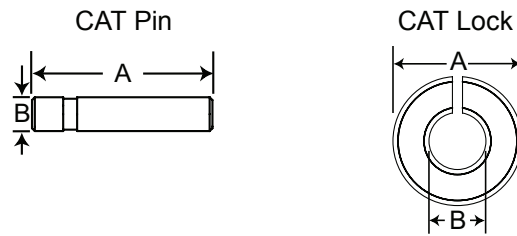
Pattern No.	Description	A	B	Weight kg/ lb	Pin	Lock
		Length mm / in	Bit Width mm / in			
117-6809	Penetration	459 / 18.07	100 / 3.94	52.1 / 114.6	134-1808	134-1809

Miscellaneous Points

Pattern No.	Description	Length mm / in	Width mm / in	Weight kg/ lb
6Y5230	Scarifier Point	184 / 7.24	49 / 1.91	1.5 / 3.2
4J8665	Router Bit	509 / 20.04	216 / 8.50	23.8 / 52.4
7J3023	HD Router Bit	581 / 22.86	249 / 9.78	39.4 / 86.6

## Caterpillar® Style J Series Fasteners

Locking system for loader and excavator teeth.



### J Series Pins

Pattern No.	A Length mm/in	B Dia. mm/in	Weight kg/ lb	Nose Size
9W7112	59/ 2.32	11/ 0.44	0.04/ 0.09	J200
6Y3228	64/ 2.51	14/ 0.56	0.08/ 0.17	J220
9J2258	80/ 3.13	14/ 0.56	0.09/ 0.21	J250
9J2308	92/ 3.63	14/ 0.56	0.11/ 0.24	J300
9J2358	108/ 4.25	19/ 0.75	0.23/ 0.51	J350
7T3408	121/ 4.75	22/ 0.88	0.35/ 0.78	J400
9W8296	134/ 5.26	19/ 0.75	0.29/ 0.63	J450
8E0468	133/ 5.25	24/ 0.94	0.46/ 1.01	J460
9W9026	162/ 6.38	25/ 1.00	0.63/ 1.38	J550
6I6608	194/ 7.63	30/ 1.19	1.08/ 2.38	J600
4T4708	197/ 7.75	32/ 1.25	1.19/ 2.63	J700
134-1808	241/ 9.50	35/ 1.38	1.70/ 3.75	J800

### J Series Locks

Pattern No.	A Outer Dia. mm/in	B Inner Dia. mm/in	Thickness kg/ lb	Weight kg / lb	Nose Size
8E6209	22/ 0.87	10/ 0.41	9/ 0.37	0.01 / 0.03	J200
8E6259	31/ 1.23	13/ 0.52	11/ 0.42	0.03 / 0.06	J220
8E6259	31/ 1.23	13/ 0.52	11/ 0.42	0.03 / 0.06	J250
8E6259	31/ 1.23	13/ 0.52	11/ 0.42	0.03 / 0.06	J300
8E6359	41/ 1.61	18/ 0.71	12/ 0.46	0.05 / 0.11	J350
8E8409	42/ 1.65	21/ 0.83	11/ 0.44	0.05 / 0.11	J400
8E6359	41/ 1.61	18/ 0.71	12/ 0.46	0.05 / 0.11	J450
8E8469	44/ 1.75	23/ 0.91	11/ 0.44	0.06 / 0.13	J460
8E5559	53/ 2.10	25/ 0.98	11/ 0.43	0.09 / 0.19	J550
6I6609	58/ 2.30	30/ 1.17	11/ 0.45	0.09 / 0.20	J600
4T4707	140/ 5.52	31/ 1.22	10/ 0.38	0.17 / 0.38	J700
134-1809	70/ 2.75	34/ 1.34	12/ 0.47	0.06/ 0.13	J800





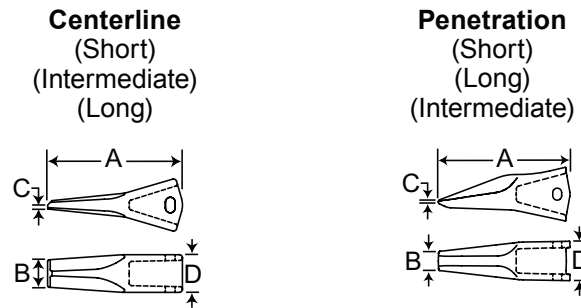
## Caterpillar® Style DRP Ripper Replacement Teeth

Designed as a direct replacement for the Caterpillar style side pin ripper system, ESCO offers a combination of value-added and differentiated point shapes. No matter what the application, ESCO has a shape that will provide excellent performance.

Nose	Brand	Short	Intermediate	Long	Short	Intermediate	Long	Tiger
		Centerline	Centerline	Centerline	Penetration	Penetration	Penetration	
R300	ESCO						<b>6Y0309</b>	
	CAT							
R350	ESCO		<b>6Y0352</b>				<b>6Y0359</b>	
	CAT		6Y0352				6Y0359	
R450	MaxRipper			<b>R450A</b>				
	ESCO	<b>9W2451</b>	<b>9W2452</b>	<b>4T4453</b>	<b>4T4451</b>	<b>4T5452</b>		
	CAT	9W2451	9W2452	114-0453	4T5451	4T5452		
R500	MaxRipper		<b>R500S</b>	<b>R500A</b>				
	ESCO			<b>4T4503</b>	<b>4T5501</b>	<b>4T5502</b>	<b>4T5503</b>	<b>3G6502</b>
	CAT	4T4501	4T4502	8E8503	4T5501	4T5502	4T5503	
R550	MaxRipper		<b>R550S</b>					
	ESCO	<b>9W4551</b>	<b>9W4552</b>			<b>6Y3552</b>		
	CAT	9W4551	9W4552			6Y3552		

## Caterpillar® Style DRP Ripper Replacement Teeth

R300-R450



R300

Pattern No.	Description	A	B	C	D	Weight kg / lb	Pin	Lock
		Length mm / in	Bit Width mm / in	Bit Thickness mm / in	Width at Rear mm / in			
6Y0309	Long Penetration	285 / 11.21	48 / 1.90	7 / 0.29	84 / 3.29	5.2 / 11.4	9J6583	7J6845

R350

Pattern No.	Description	A	B	C	D	Weight kg / lb	Pin	Lock
		Length mm / in	Bit Width mm / in	Bit Thickness mm / in	Width at Rear mm / in			
6Y0359	Long Penetration	354 / 13.95	51 / 2.00	16 / 0.62	106 / 4.17	13.3 / 29.3	9J2358	7J6845
6Y0352	Intermediate Centerline	356 / 14.00	51 / 2.02	10 / 0.38	95 / 3.75	11.1 / 24.5	9J2358	7J6845

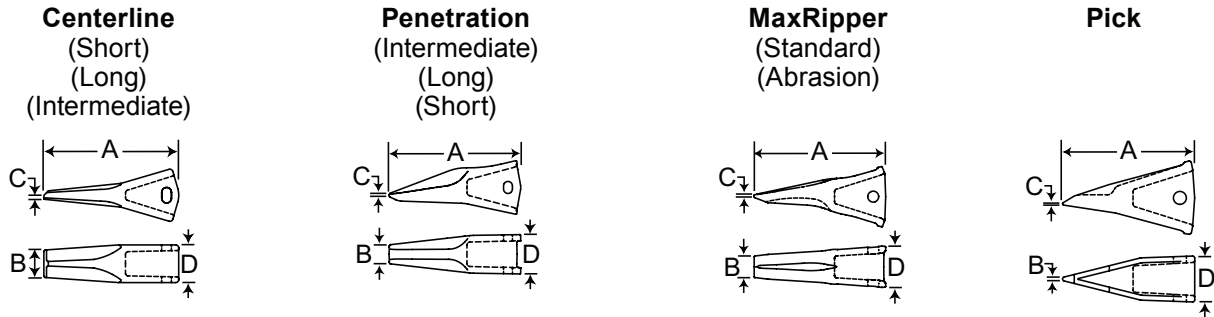
R450

Pattern No.	Description	A	B	C	D	Weight kg / lb	Pin	Lock
		Length mm / in	Bit Width mm / in	Bit Thickness mm / in	Width at Rear mm / in			
9W2451	Short Centerline	327 / 12.88	81 / 3.20	10 / 0.41	127 / 5.00	14.9 / 32.8	4T2479	N/A
9W2452	Intermediate Centerline	387 / 15.25	83 / 3.25	10 / 0.38	127 / 5.00	21.0 / 46.3	4T2479	N/A
4T4453	Long Centerline	419 / 16.50	83 / 3.25	14 / 0.55	124 / 4.88	21.0 / 46.1	4T2479	N/A
4T5452	Intermediate Penetration	394 / 15.50	55 / 2.16	10 / 0.39	120 / 4.71	18.5 / 40.8	4T2479	N/A
4T4451	Short Penetration	311 / 12.25	76 / 3.00	10 / 0.38	122 / 4.82	15.0 / 33.1	4T2479	N/A

## Caterpillar® Style DRP Ripper Replacement Teeth

R500

R450 MaxRipper-R500 MaxRipper



R450 MaxRipper

Pattern No.	Description	A	B	C	D	Weight kg / lb	Pin	Lock
		Length mm / in	Bit Width mm / in	Bit Thickness mm / in	Width at Rear mm / in			
R450A	MaxRipper Abrasion	425 / 16.75	65 / 2.56	8 / 0.32	122 / 4.81	19.9 / 43.7	4T2479	N/A

R500

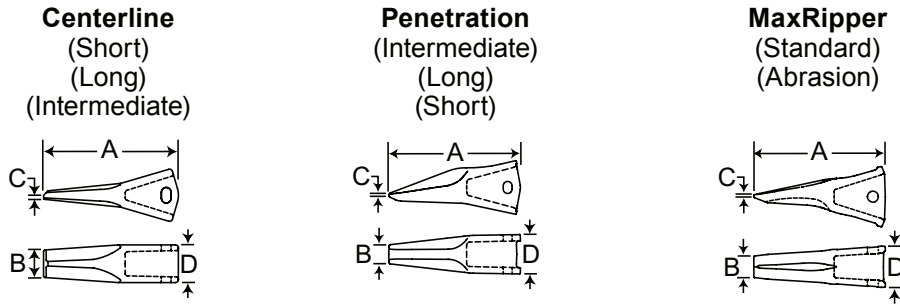
Pattern No.	Description	A	B	C	D	Weight kg / lb	Pin	Lock
		Length mm / in	Bit Width mm / in	Bit Thickness mm / in	Width at Rear mm / in			
4T4503	Long Centerline	476 / 18.75	76 / 3.00	13 / 0.50	145 / 5.70	28 / 62.0	3G0500	N/A
4T5501	Short Penetration	381 / 15.00	83 / 3.25	7 / 0.29	149 / 5.88	29 / 63.3	3G0500	N/A
4T5502	Intermediate Penetration	438 / 17.25	83 / 3.25	7 / 0.29	149 / 5.86	32 / 70.0	3G0500	N/A
4T5503	Long Penetration	464 / 18.25	83 / 3.25	7 / 0.29	149 / 5.86	34 / 73.7	3G0500	N/A
3G6502	Pick	409 / 16.09	4 / 0.15	4 / 0.15	141 / 5.57	28 / 62.0	3G0500	N/A

R500 MaxRipper

Pattern No.	Description	A	B	C	D	Weight kg / lb	Pin	Lock
		Length mm / in	Bit Width mm / in	Bit Thickness mm / in	Width at Rear mm / in			
R500S	MaxRipper Standard	446 / 17.55	80 / 3.15	10 / 0.40	153 / 6.02	29 / 63.7	3G0500	N/A
R500A	MaxRipper Abrasion	490 / 19.28	80 / 3.15	10 / 0.40	152 / 5.98	30 / 66.0	3G0500	N/A

## Caterpillar® Style DRP Ripper Replacement Teeth

R550  
R550 MaxRipper



R550

Pattern No.	Description	A	B	C	D	Weight kg / lb	Pin	Lock
		Length mm / in	Bit Width mm / in	Bit Thickness mm / in	Width at Rear mm / in			
9W4551	Short Centerline	508 / 20.00	51 / 2.00	19 / 0.75	171 / 6.72	44 / 96.6	6Y1205	9N4245
9W4552	Intermediate Centerline	533 / 21.00	76 / 3.00	16 / 0.63	184 / 7.25	26 / 56.9	6Y1205	9N4245
6Y3552	Intermediate Penetration	533 / 21.00	80 / 3.14	17 / 0.65	178 / 7.00	48 / 106.0	6Y1205	9N4245

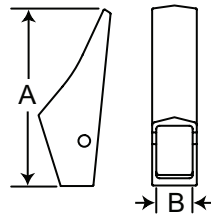
R550 MaxRipper

Pattern No.	Description	A	B	C	D	Weight kg / lb	Pin	Lock
		Length mm / in	Bit Width mm / in	Bit Thickness mm / in	Width at Rear mm / in			
R550S	MaxRipper Standard	559 / 22.00	89 / 3.50	16 / 0.63	173 / 6.83	50 / 110.0	3G0500	N/A

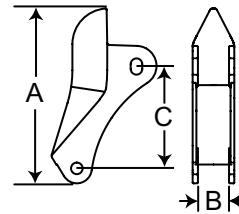
## Caterpillar® Style Ripper Shrouds

ESCO direct replacement shrouds for Caterpillar style ripper shanks.

**1 Pin Ripper Shroud**  
(Standard)  
(HD)



**2 Pin Ripper Shroud**  
(Short)  
(Long)  
(Sharp)



### R450

Pattern No.	Description	A Length mm / in	B Shank mm / in	C Pin-to-Pin mm / in	Weight kg / lb	Pin	Lock
6J8814	2 Pin Short	487 / 19.19	76 / 3.00	311/12.25	14.1 / 31.1	4T2479 (TOP), 6J8811 (BOTTOM)	N/A
8E1848*	2 Pin Sharp	NA	NA	NA	23.5 / 51.8	4T2479 (TOP), 6J8811 (BOTTOM)	N/A
1U4410*	2 Pin Long	715 / 28.13	76 / 3.00	284/11.18	30.7 / 67.5	4T2479 (TOP), 6J8811 (BOTTOM)	N/A

\* Potential future offering

### R500

Pattern No.	Description	A Length mm / in	B Shank mm / in	C Pin-to-Pin mm / in	Weight kg / lb	Pin	Lock
1U3644	1 Pin HD	563 / 22.17	105 / 4.13	NA	44.6 / 98.1	3G0500	N/A
3G9594*	1 Pin Standard	546 / 21.50	114 / 4.50	NA	24.5 / 53.8	3G0500	N/A
9W8365EXT*	2 Pin Sharp	NA	NA	NA	47.1 / 103.8	102-9062 (TOP & BOTTOM)	N/A
6Y8960*	2 Pin Sharp	593 / 23.33	102 / 4.00	352 / 13.88	39.5 / 87.0	6Y1204	6Y1202

\* Potential future offering

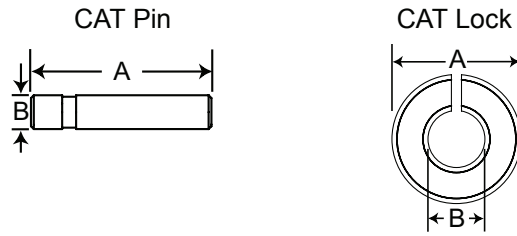
### R550

Pattern No.	Description	A Length mm / in	B Shank mm / in	C Pin-to-Pin mm / in	Weight kg / lb	Pin	Lock
9N4621*	2 Pin Sharp	734 / 28.88	114 / 4.50	588/23.13	90.0 / 198.0	6Y1205	9N4245

\* Potential future offering

## Caterpillar® Style R Series Fasteners

Locking system for Caterpillar style ripper teeth.



### R Series Pins

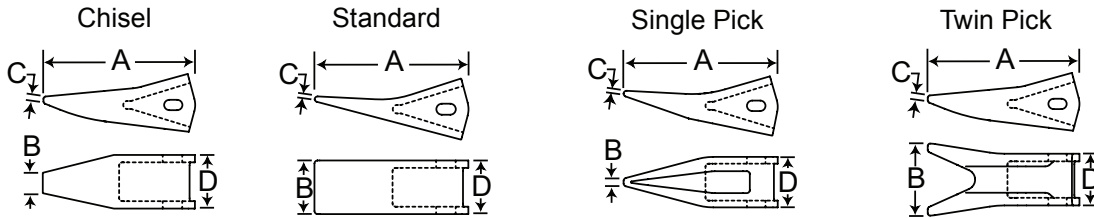
Pattern No.	A Length mm / in	B Dia. mm / in	Wt. kg / lb	Nose Size
9J6583	87 / 3.44	19 / 0.75	0.32 / 0.70	R300
9J2358	108 / 4.25	19 / 0.75	0.23 / 0.50	R350
4T2479	127 / 5.00	25 / 1.00	0.45 / 1.00	R450
3G0500	152 / 6.00	32 / 1.25	0.91 / 2.00	R500
6Y1205	159 / 6.25	35 / 1.38	0.18 / 0.40	R550

### R Series Locks

Pattern No.	A Outer Dia. mm / in	B Inner Dia. mm / in	Thickness kg / lb	Wt. kg / lb	Nose Size
7J6845	38 / 1.50	18 / 0.72	8 / 0.31	0.14 / 0.30	R300/R350
9N4245	64 / 2.50	32 / 1.25	11 / 0.42	1.18 / 2.60	R550

## H&L Style Replacement Teeth

ESCO direct replacement points for the H&L 230 series.



### 230 Series

Pattern No.	Description	A Length mm / in	B Bit Width mm / in	C Bit Thickness mm / in	D Width at Rear mm / in	Wt. kg / lb	Pin
230CPE	Chisel	162 / 6.36	22 / 0.85	4 / 0.14	54 / 2.14	1.2 / 2.7	23FP
230S	Standard	156 / 6.14	56 / 2.21	7 / 0.29	58 / 2.29	1.3 / 2.8	23FP
230SPE	Single Pick	162 / 6.38	5 / 0.20	3 / 0.11	55 / 2.17	1.0 / 2.2	23FP
230TPE	Twin Pick	162 / 6.38	83 / 3.25	3 / 0.11	54 / 2.13	1.3 / 2.8	23FP



[www.escocorp.com](http://www.escocorp.com)

ESCO Corporation is the preferred provider of technically rich metal components and wear solutions for industrial applications. ESCO has over 40 locations and affiliates worldwide.

**North America**

2141 NW 25<sup>th</sup> Avenue  
Portland, OR 97210  
**PH:** 800.523.3795 | 503.228.2141

**Latin America**

Rua Engenheiro Gerhard Ett, 1215  
Distrito Industrial Paulo Camilo Sul  
Betim/MG – CEP: 32669-110  
Caixa Postal 256 - Betim, Minas Gerais – Brasil  
**PH:** 55 31.3539.1200

**Europe, Africa, Middle East,  
Commonwealth of Independent States**

Rue des Fours à Chaux  
7080 Frameries, Belgium  
**PH:** 32.65.611.555

**Asia Pacific**

1 Scotts Road, Number 16-08  
Singapore 228208  
**PH:** 65.6733.5858