



# Futura

WEAR TECHNOLOGY







# INDEX

**DRP**

03

DIRECT REPLACEMENT PARTS FOR CATERPILLAR



**T2**

12

COMPATIBLE WITH ESCO SV2®



**BP**

18

UNIVERSAL BUCKET PROTECTION PARTS



**FC2**

06

4-NERVE NOSE PROPRIETARY SYSTEM



**X2**

13

COMPATIBLE WITH HENSLEY XS® AND KOMATSU KMAX®



**RIPPER**

20

RIPPER PARTS



**TWISTER**

08

COMPATIBLE WITH ESCO SUPERV®



**MINER**

14

COMPATIBLE WITH ESCO POSILOK®



**DRP**

DIRECT REPLACEMENT PARTS FOR MAIN BRANDS

ADCO  
BRADKEN  
CASE  
CATERPILLAR  
ESCO  
FIAT HITACHI  
H&L  
HENSLEY  
JOHN DEERE  
KEECH  
KOBELCO  
KOMATSU  
MINI  
TATA HITACHI  
VOLVO  
VOLVO-HITACHI  
ETC...

**TWISTER**

12

COMPATIBLE WITH ESCO SUPERV® HAMMERLESS



**MINER**

16

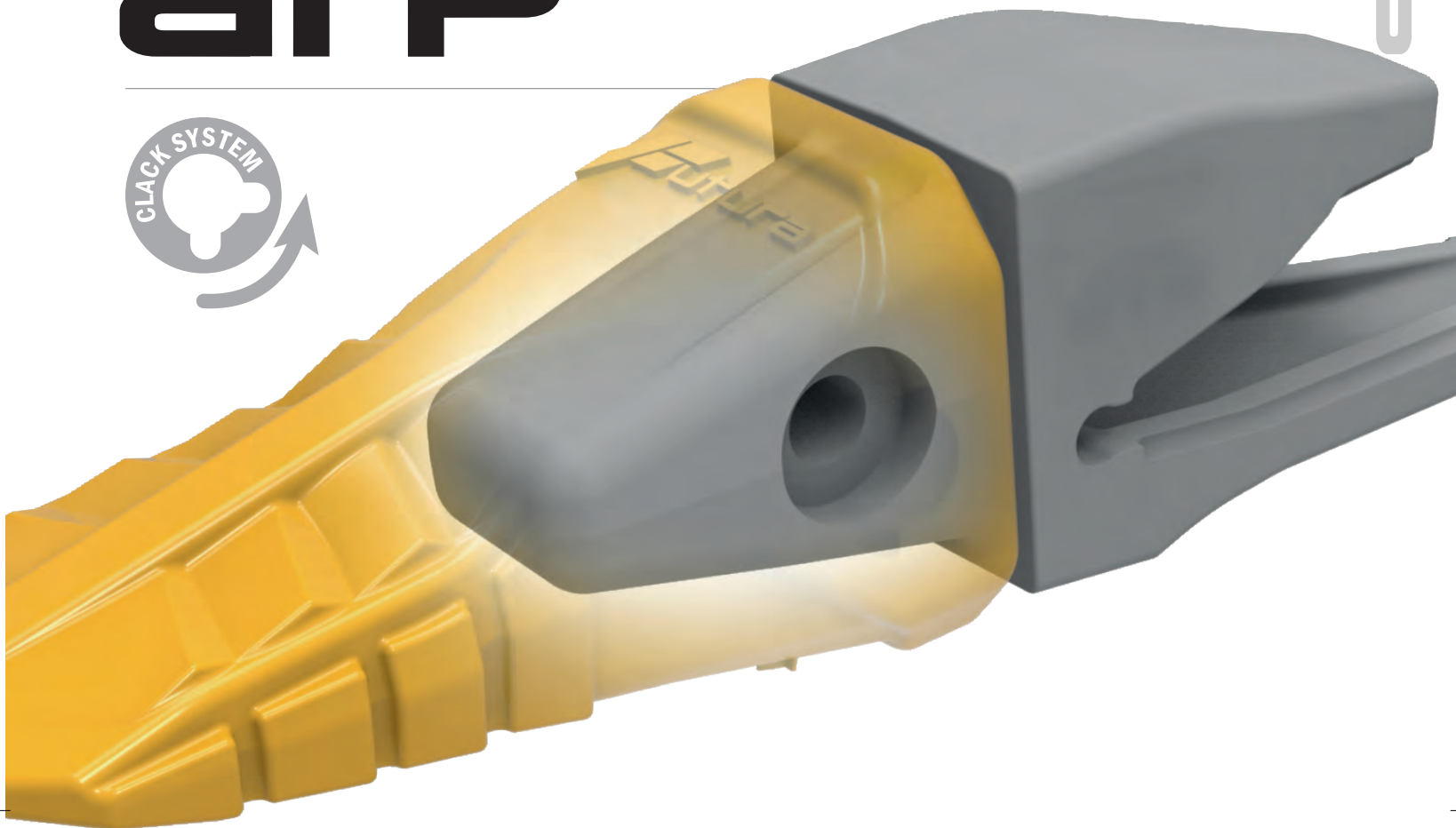
COMPATIBLE WITH ESCO TOPLOK®





# DRP

DRP



## FUTURA DRP CLACK: A UNIVERSAL HAMMERLESS SIDE PIN SOLUTION 100% COMPATIBLE WITH YOUR CATERPILLAR SIDE PIN ADAPTERS

### UNIVERSAL SOLUTION

With the design of a quick and easy replacement assembly, FUTURA engineered fastening solutions contribute to reduce machine's downtime. Hammering is also avoided and parts remain perfectly locked in place.

100% Compatible with OEM adapters. The FUTURA HL2 system works only with FUTURA teeth but is fully compatible with Direct Replacement Parts Caterpillar side pin adapters. Dirt plugs are included for each HL2 part number

### HAMMERLESS SOLUTION

The HL2 System is 100% compatible with your current Caterpillar side pin adapter.

Increased pin retention: the pins are securely locked in place. Rubber insert under locking tab allows the locking tab (fig. 3) to compress, rotate and lock

Easy to install and remove with a standard hex drive socket.

### INCREASED SAFETY

Avoiding hammering the HL2 Hammerless system features an increased safety compared to standard side pin & washers.



### HL2

HAMMERLESS PIN

Part#	OEM pins	OEM retainers	Size
<b>FC250HL2</b>	8E-6258, 132-4763, 9J-2258	8E-6259, 3G-9609, 149-5733	<b>25</b>
<b>FC300HL2</b>	107-3308, 132-4766, 9J-2308	8E-6259M, 3G-9609, 149-5733	<b>30</b>
<b>FC350HL2</b>	8E-6358, 114-0358, 9J-2358	8E-6359, 3G-9548, 114-0359	<b>35</b>
<b>FC400HL2</b>	7T-3408, 116-7408	8E-8409, 116-7409	<b>40</b>
<b>FC450HL2</b>	8E-0468, 114-0468	8E-8469, 107-3469	<b>45</b>
<b>FC550HL2</b>	6Y-8558, 107-3378, 1U-1558	8E-5559, 3G-9559, 107-8559	<b>55</b>
<b>FC600HL2</b>	6I-6608, 113-9608	6I-6609, 113-9609	<b>60</b>
<b>FC700HL2</b>	4T-4708, 113-4708	4T-4707, 113-4709	<b>70</b>
<b>FC800HL2</b>	134-1808, 102-0101	101-2874, 134-1809	<b>80</b>

Other manufacturer's names, descriptions, pictures and part numbers are used for reference purposes only.

Futura







# DRP

## EXCAVATOR

**L**  
LONG



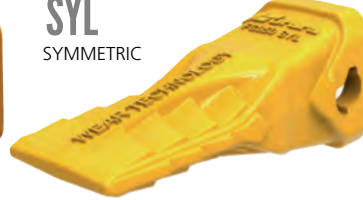
Kg	Lb	Part#	OEM	Size
1,6	4	FC200 L	1U-3202	20
2,1	5	FC220 L	6Y-3222	22
3,4	7	FC250 L	1U-3252	25
4,5	10	FC300 L	1U-3302	30
7,1	16	FC350 L	1U-3352	35
8,6	19	FC400 L	7T-3402	40
13,3	29	FC450 L	9W-8452	45
20,6	45	FC550 L	9W-8552	55
31,0	68	FC600 L	6I-6602	60

**F**  
FLARE



Kg	Lb	Part#	OEM	Size
1,5	3	FC200 F	109-9200	20
3,9	9	FC250 F	3G-8250	25
6,8	15	FC300 F	4T-1300 107-3300	30
9,3	20	FC350 F	8I-3350 107-3350	35
12,8	28	FC400 F	7T-3400, 107-3400	40
18,5	41	FC450 F	8I-1450, 107-3450	45
28,8	63	FC550 F	7I-9550 107-3550	55

**SYL**  
SYMMETRIC



Kg	Lb	Part#	OEM	Size
2,0	4	FC200 SYL	1U-3202 SYL	20
4,1	9	FC250 SYL	1U-3252 SYL	25
5,8	13	FC300 SYL	1U-3302 SYL, 183-5300	30
8,0	18	FC350 SYL	1U-3352 SYL, 168-1359	35
15,4	34	FC400 SYL	8E-4402 SYL, 168-1409	40
17,0	37	FC450 SYL	9W-8452 SYL, 159-0459	45
26,5	58	FC550 SYL	9W-8552 SYL, 159-0559	55
40,6	89	FC600 SYL	159-0607	60

**RC**  
ROCK  
CHISEL

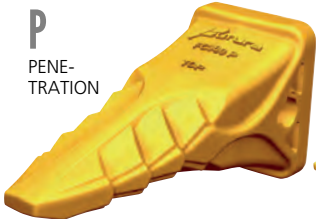


**NEW DESIGN  
RC+RE INTO ONE DESIGN**



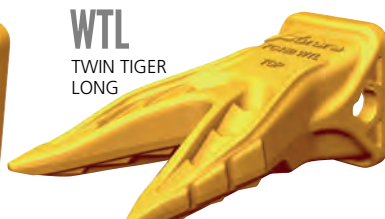
Kg	Lb	Part#	OEM	Size
2,7	6	FC200 RC	-	20
4,2	9	FC250 RC	-	25
5,9	13	FC300 RC	1U-3302 RC 125-8309	30
8,8	19	FC350 RC	1U-3352 RC 119-9359	35
11,6	26	FC400 RC	7T-3402 RC 124-7409	40
17,7	39	FC450 RC	1U-3452 RC 116-7459	45
30,5	67	FC550 RC	1U-3552 RC 113-0559	55
40,6	89	FC600 RC	6I-6602 RC 119-9609	60
57,2	126	FC700 RC	4T-4702 RC	70
84,7	186	FC800 RC	-	80

**P**  
PENE-  
TRATION



Kg	Lb	Part#	OEM	Size
1,4	3	FC200 P	1U-3209	20
3,2	7	FC250 P	9J-4259	25
4,5	10	FC300 P	9J-4309	30
6,5	14	FC350 P	9J-4359	35
9,7	21	FC400 P	6Y-7409	40
13,1	29	FC450 P	9W-8459	45
18,2	40	FC550 P	9W-8559	55
27,3	60	FC600 P	7I-7609	60
37,4	82	FC700 P	4T-4709	70
54,8	121	FC800 P	117-6809	80

**WTL**  
TWIN TIGER  
LONG



Kg	Lb	Part#	OEM	Size
1,8	4	FC200 WTL	1U-3202 WTL 135-8208	20
4,0	9	FC250 WTL	1U-3252 WTL 135-8258	25
5,6	12	FC300 WTL	1U-3302 WTL 135-9308	30
8,5	19	FC350 WTL	1U-3352 WTL 135-9337	35
14,0	31	FC400 WTL	7T-3402 WTL 135-9408	40
16,1	35	FC450 WTL	1U-3452 WTL 138-6458	45
22,6	50	FC550 WTL	1U-3552 WTL 138-6558	55
39,9	88	FC600 WTL	6I-6602 WTL 135-9608	60
54,2	119	FC700 WTL	4T-4702 WTL	70

**TL**  
TIGER  
LONG



Kg	Lb	Part#	OEM	Size
1,2	3	FC200 TL	1U-3202 TL, 9W-8209	20
2,6	6	FC250 TL	1U-3252 TL, 9W-8259	25
3,7	8	FC300 TL	1U-3302 TL, 9W-8309	30
6,3	14	FC350 TL	1U-3352 TL, 9W-2359	35
11,0	24	FC400 TL	7T-3402 TL, 6Y-5409	40
12,9	28	FC450 TL	1U-3452 TL, 7T-8459	45
17,5	39	FC550 TL	1U-3552 TL, 9W-6559	55
30,3	67	FC600 TL	6I-6602 TL, 107-8609	60
44,0	97	FC700 TL	4T-4702 TL	70

**U**  
UNIVERSAL



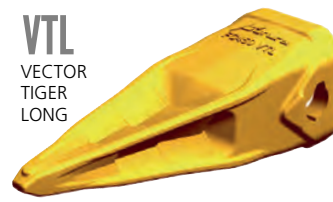
Kg	Lb	Part#	OEM	Size
3,2	7	FC250 U	1U-3252	25
3,9	9	FC300 U	1U-3302	30
6,0	13	FC350 U	1U-3352	35
10,7	24	FC450 U	9W-8452	45

**I**  
IMPACT



Kg	Lb	Part#	OEM	Size
5,2	11	FC300 I	1U-3301	30
7,1	16	FC350 I	1U-3351	35
14,4	32	FC450 I	9W-8451 / 1U-3451	45
21,8	48	FC550 I	9W-8551 / 1U-3551	55

**VTL**  
VECTOR  
TIGER  
LONG



Kg	Lb	Part#	OEM	Size
13,0	29	FC450 VTL	1U-3452 TL, 7T-8459	45
20,5	45	FC550 VTL	1U-3552 TL, 9W-8259	55
34,0	75	FC600 VTL	107-8609	60
39,9	88	FC700 VTL	4T-4702	70

**WTS**  
TWIN TIGER  
SHARP



Kg	Lb	Part#	OEM	Size
1,3	3	FC200 WTS	1U-3202 WTL 135-8208	20
5,3	12	FC300 WTS	1U-3302 WTL 135-9308	30
8,0	18	FC350 WTS	1U-3352 WTL 135-9337	35
12,5	28	FC450 WTS	1U-3452 WTL 138-6458	45

## LOADER

**RPL**  
ROCK  
PENETRATION  
LIGHT



Kg	Lb	Part#	OEM	Size
1,9	4	FC200 RPL	4T-2203	20
3,8	8	FC250 RPL	9N-4252	25
6,0	13	FC300 RPL	9N-4302	30
8,5	19	FC350 RPL	9N-4352	35
11,5	25	FC400 RPL	8E-4402	40
17,9	39	FC450 RPL	9N-4452	45
22,0	48	FC550 RPL	9N-4552	55
38,8	85	FC600 RPL	7Y-0602	60

**RP**  
ROCK  
PENE-  
TRATION



Kg	Lb	Part#	OEM	Size
5,9	13	FC250 RP	4T-2253 RP	25
8,4	18	FC300 RP	4T-2303 RP	30
11,7	26	FC350 RP	4T-2353 RP	35
16,1	35	FC400 RP	7T-3403 RP	40
24,0	53	FC450 RP	9W-1453 RP	45
29,0	64	FC550 RP	9W-1553 RP 6Y-2553	55
51,7	114	FC600 RP	6I-6603 RP	60
65,2	143	FC700 RP	4T-4703 RP	70
100,2	220	FC800 RP	6I-8803	80

**RPHD**  
ROCK  
PENET-  
RATION  
HD



Kg	Lb	Part#	OEM	Size
19,3	42	FC400 RPHD	135-9400	40
27,9	61	FC450 RPHD	138-6451	45
33,4	73	FC550 RPHD	138-6552	55
60,5	133	FC600 RPHD	135-9600	60
74,1	163	FC700 RPHD	135-9700	70
120,5	265	FC800 RPHD	135-9800	80

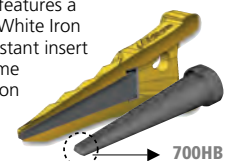
## WHITE IRON CORE

**PHC 700HB**  
WHITE IRON  
WEAR-  
RESISTANT  
INSERT



Kg	Lb	Part#	OEM	Size
13,2	29	FC450 PHC	9W-8459	45

Original solution:  
the PHC features a  
Chrome White Iron  
wear-resistant insert  
for extreme  
penetration





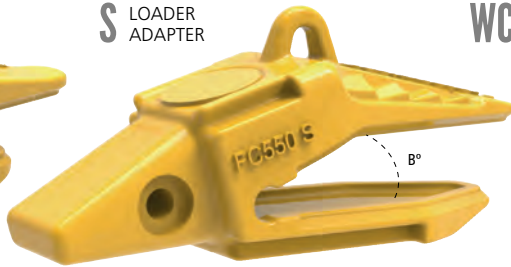
# DRP

## DIRECT REPLACEMENT PARTS FOR CATERPILLAR LOADER ADAPTERS

**S** LOADER ADAPTER



**S** LOADER ADAPTER



**WC** OPTIONAL WEAR CAP



**WN**

WELD-ON NOSE



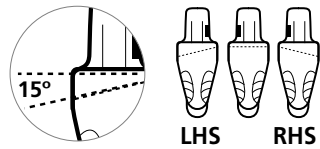
Weld-on Noses are the easiest and quickest way to convert any proprietary adapter into the Futura High Performance Hammerless system.

Kg	Lb	B°	Part#	OEM	Size
20,0	44	22°	<b>FC400 S</b>	125-8404	
19,6	43	22°	<b>FC400 S LHS</b>	-	<b>40</b>
19,6	43	22°	<b>FC400 S RHS</b>	-	
23,5	52	22°	<b>FC450 S</b>	114-0464	
24,1	53	22°	<b>FC450 S LHS</b>	114-0466	<b>45</b>
24,1	53	22°	<b>FC450 S RHS</b>	114-0465	

Kg	Lb	B°	Part#	OEM	Size
43,5	96	22°	<b>FC550 S</b>	107-3554	
44,3	97	22°	<b>FC550 S LHS</b>	107-3555	<b>55</b>
44,3	97	22°	<b>FC550 S RHS</b>	107-3556	
77,0	169	22°	<b>FC600 S</b>	119-8604	
78,2	172	22°	<b>FC600 S LHS</b>	119-8605	<b>60</b>
78,2	172	22°	<b>FC600 S RHS</b>	119-8606	
77,8	171	22°	<b>FC700 S</b>	133-0704	
80,4	177	22°	<b>FC700 S LHS</b>	133-0705	<b>70</b>
78,7	173	22°	<b>FC700 S RHS</b>	133-0706	
123,7	272	22°	<b>FC800 S</b>	61-8804	<b>80</b>

Kg	Lb	Part#	Quantity	Size
1,7	4	<b>F5559 WC</b>		<b>55</b>
2,7	6	<b>F6061 WC</b>		<b>60</b>
3,7	8	<b>F7069 WC</b>		<b>70</b>
4,5	10	<b>F8071 WC</b>		<b>80</b>

Kg	Lb	Part#	Size
1,0	2	<b>WN-200</b>	<b>20</b>
1,8	4	<b>WN-220</b>	<b>22</b>
2,4	5	<b>WN-250</b>	<b>25</b>
4,3	9	<b>WN-300</b>	<b>30</b>
5,0	11	<b>WN-350</b>	<b>35</b>
7,0	15	<b>WN-400</b>	<b>40</b>
9,2	20	<b>WN-450</b>	<b>45</b>
13,5	30	<b>WN-550</b>	<b>55</b>
26,0	57	<b>WN-600</b>	<b>60</b>
31,2	69	<b>WN-700</b>	<b>70</b>
44,3	97	<b>WN-800</b>	<b>80</b>



**BO** BOLT-ON LOADER ADAPTER



Kg	Lb	B°	Part#	OEM
13,0	29	25	<b>FC350 BO</b>	VOLVO L220D Hitachi LX290

**BOC** BOLT-ON CORNER ADAPTER



Kg	Lb	B°	Part#	OEM
16,9	37	25	<b>FC350 BOC</b>	VOLVO L220D Hitachi LX290

**SIDE PIN BOLT-ON LOADER ADAPTERS**

FUTURA loader adapter size 55 with six optional wear caps mounted



## DIRECT REPLACEMENT PARTS FOR CATERPILLAR EXCAVATOR ADAPTERS

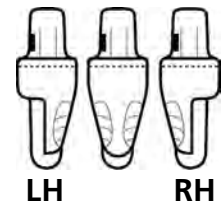
**X** EXCAVATOR ADAPTER



**X** EXCAVATOR ADAPTER



**WC** OPTIONAL WEAR CAP



Kg	Lb	B°	Part#	OEM	Size
1,8	4	22°	<b>FC200</b>	119-3205	<b>20</b>
3,3	7	22°	<b>FC220</b>	6Y-3224	<b>22</b>
4,4	10	22°	<b>FC250</b>	6Y-3254 119-3253	<b>25</b>
7,5	16	22°	<b>FC300</b>	3G-6304	<b>30</b>
7,7	17		<b>FC300-35</b>	8E-9490	
7,5	17	22°	<b>FC300-35 LH</b>		
7,5	17	22°	<b>FC300-35 RH</b>		
10,5	23	22°	<b>FC350</b>	6I-6354	<b>35</b>
10,2	22	35°	<b>FC350-B35</b>	3G-8354	
14,4	32	22°	<b>FC400</b>	6I-6404	<b>40</b>
21,4	47		<b>FC450</b>	6I-6464	
21,2	47	22°	<b>FC450 LH</b>	6I-6465	
21,2	47	22°	<b>FC450 RH</b>	6I-6466	
34,0	75		<b>FC450-63</b>	-	<b>45</b>
31,2	69	22°	<b>FC450-63 LH</b>	-	
31,2	69	22°	<b>FC450-63 RH</b>	-	

Kg	Lb	B°	Part#	OEM	Size
35,1	77		<b>FC550</b>	6I-6554	
34,3	75	22°	<b>FC550 LH</b>	6I-6555	<b>55</b>
35,7	79	22°	<b>FC550 RH</b>	6I-6556	
64,4	142		<b>FC600</b>	6I-6604	
65,4	144	22°	<b>FC600 LH</b>	6I-6605	<b>60</b>
65,4	144	22°	<b>FC600 RH</b>	6I-6606	
87,3	192		<b>FC700</b>	222-770C	
82,0	180	35°	<b>FC700 LH</b>		<b>70</b>
86,3	190		<b>FC700 RH</b>		
122,0	268		<b>FC800</b>	6I-8804	
117,9	259	30°	<b>FC800 LH</b>		<b>80</b>
117,9	259		<b>FC800 RH</b>		

Kg	Lb	Part#	Quantity	Size
1,7	4	<b>F5559 WC</b>		<b>55</b>
2,7	6	<b>F6061 WC</b>		<b>60</b>
3,7	8	<b>F7069 WC</b>		<b>70</b>
4,5	10	<b>F8071 WC</b>		<b>80</b>



Example of a FUTURA excavator adapter size 55 with two optional wear caps mounted







# FC2

## NEW 4-NERVE NOSE DRAMATICALLY IMPROVES SIDE PIN FITMENT

**1**  
BENEFIT

### ONE TOOTH FITS TWO SYSTEMS

**1x2**  
COMPATIBILITY

FC2 teeth are fully compatible with standard J Series Adapters

**2**  
BENEFIT

### HAMMERLESS AND SAFE SYSTEM



FC2 teeth are easily assembled and disassembled with a standard Allen key

**3**  
BENEFIT

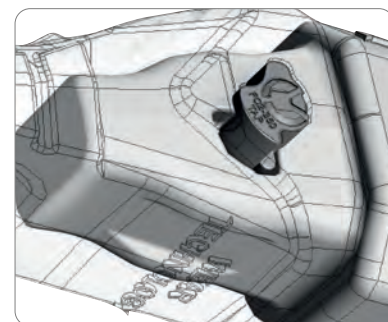
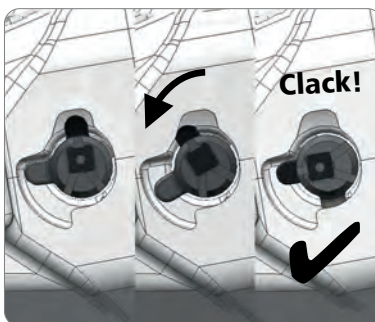
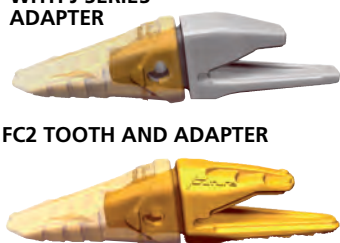
### OUTSTANDING QUALITY & UNBEATABLE PRICE

FC2 parts are sold at Futura Wear Technology prices. Stock savings: ONE tooth would fit onto TWO systems

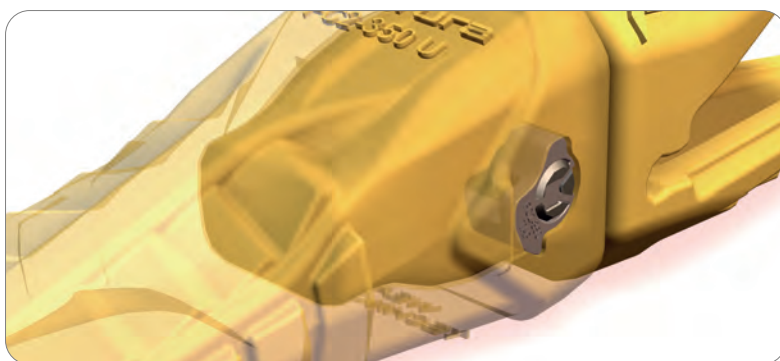
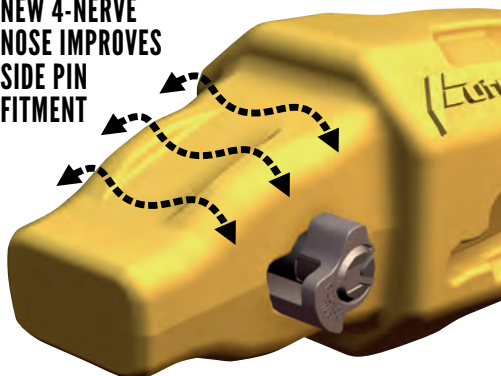
**PROPRIETARY SYSTEM**

FC2 TOOTH IS COMPATIBLE WITH J SERIES ADAPTER

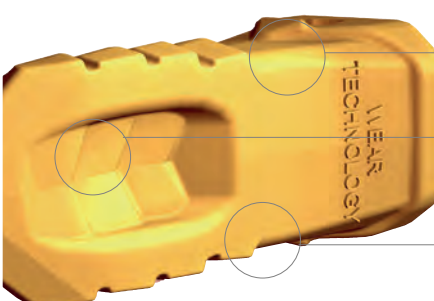
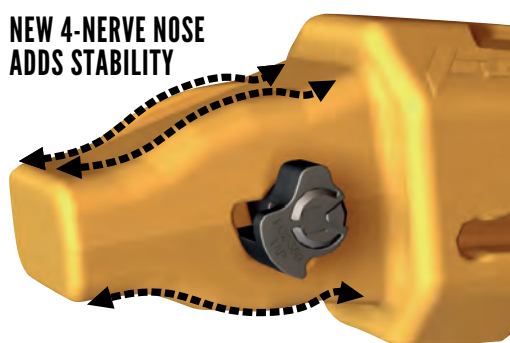
FC2 TOOTH AND ADAPTER



**NEW 4-NERVE NOSE IMPROVES SIDE PIN FITMENT**



**NEW 4-NERVE NOSE ADDS STABILITY**



**REINFORCED TOOTH BOX**

Protects pin and tooth pocket

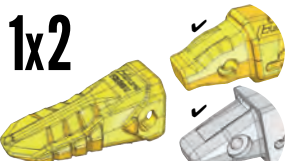
**UNDERSIDE POCKET**

Maintains bit sharpness without compromising point integrity

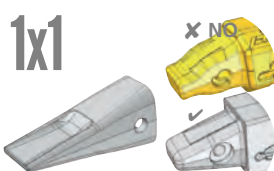
**LATERAL RIBS**

Extra wear material on lateral ribs contribute to self-sharpening effect

**NOSE COMPATIBILITY**



**FC2 VS. J SERIES**



**LOCKING OPTIONS**



**FC2 VS. J SERIES**





# FC2

TWICE COMPATIBLE  
DOUBLE SAVING

# 1X2

## PROPRIETARY SYSTEM

COMPATIBILITY



### U UNIVERSAL



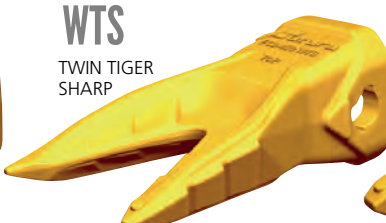
Kg	Lb	Part#	OEM	Size
3,8	8	FC2-250 U	1U-3252	25
5,0	11	FC2-300 U	1U-3302	30
7,5	16	FC2-350 U	1U-3352	35
12,6	28	FC2-450 U	9W-8452	45
21,6	48	FC2-550 U	9W-8552	55
35,6	78	FC2-600 U	6I-6602	60

### STD STANDARD



Kg	Lb	Part#	OEM	Size
4,5	10	FC2-300 STD	1U-3302	30
6,5	14	FC2-350 STD	1U-3352	35
11,8	26	FC2-450 STD	9W-8452	45

### WTS TWIN TIGER SHARP



Kg	Lb	Part#	OEM	Size
5,3	12	FC2-300 WTS	135-9308	30
6,8	15	FC2-350 WTS	135-9337	35
12,4	27	FC2-450 WTS	135-9408	45

### VTL VECTOR TIGER LONG



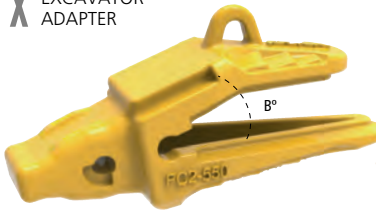
Kg	Lb	Part#	OEM	Size
13,0	29	FC2-450 VTL	1U-3452 TL, 7T-8459	45
19,2	42	FC2-550 VTL	1U-3552 TL, 9W-8259	55
33,0	73	FC2-600 VTL	107-8609	60
44,6	98	FC2-700 VTL	4T-4702	70

### HL2 HAMMERLESS PIN

Kg	Lb	Part#	Size
0,1	0,2	FC250HL2	25
0,2	0,4	FC300HL2	30
0,3	0,7	FC350HL2	35
0,5	1,2	FC450HL2	45
1,0	2,2	FC550HL2	55
1,1	2,5	FC600HL2	60
1,5	3,2	FC700HL2	70
2,0	4,4	FC800HL2	80

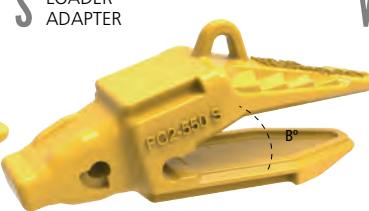


### X EXCAVATOR ADAPTER



Kg	Lb	B°	Part#	OEM	Size
35,3	78		FC2-550	6I-6554	
33,2	73	22°	FC2-550 LH	6I-6556	55
33,2	73		FC2-550 RH	6I-6555	
62,1	137		FC2-600	6I-6604	
57,9	127	22°	FC2-600 LH	6I-6606	60
57,9	127		FC2-600 RH	6I-6605	
84,5	186		FC2-700	222-7700	
77,0	169	35°	FC2-700 LH		70
77,0	169		FC2-700 RH		
115	253		FC2-800		
109	240	30°	FC2-800 LH		80
109	240		FC2-800 RH		

### S LOADER ADAPTER



Kg	Lb	B°	Part#	OEM	Size
41,0	90	22°	FC2-550 S	107-3554 3G-9494	
41,8	92	22°	FC2-550 S LHS	107-3555 3G-9496	55
41,8	92	22°	FC2-550 S RHS	107-3556 3G-9495	
66,2	146	22°	FC2-600 S	119-8604	
67,5	149	22°	FC2-600 S LHS	119-8606	60
67,5	149	22°	FC2-600 S RHS	119-8605	
76,1	167	22°	FC2-700 S	133-0704 171-1704 4T-4704	
77,6	171	22°	FC2-700 S LHS	133-0706 4T-4706	70
77,6	171	22°	FC2-700 S RHS	133-0705 4T-4705	
121	265	22°	FC2-800 S	6I-8804	80

### WC OPTIONAL WEAR CAP



Kg	Lb	Part#	S	X	Size
1,7	4	F5559 WC			55
2,7	6	F6061 WC			60
3,7	8	F7069 WC			70
4,5	10	F8071 WC			80

### X EXCAVATOR ADAPTER



Kg	Lb	B°	Part#	OEM	Size
4,5	10	22	FC2-250	6Y-3254	25
8,0	17	22	FC2-300	3G-6304	30
10,1	22	22	FC2-350	6I-6354	35
20,6	45	22	FC2-450	6I-6464	45

Other manufacturer's names, descriptions, pictures and part numbers are used for reference purposes only.



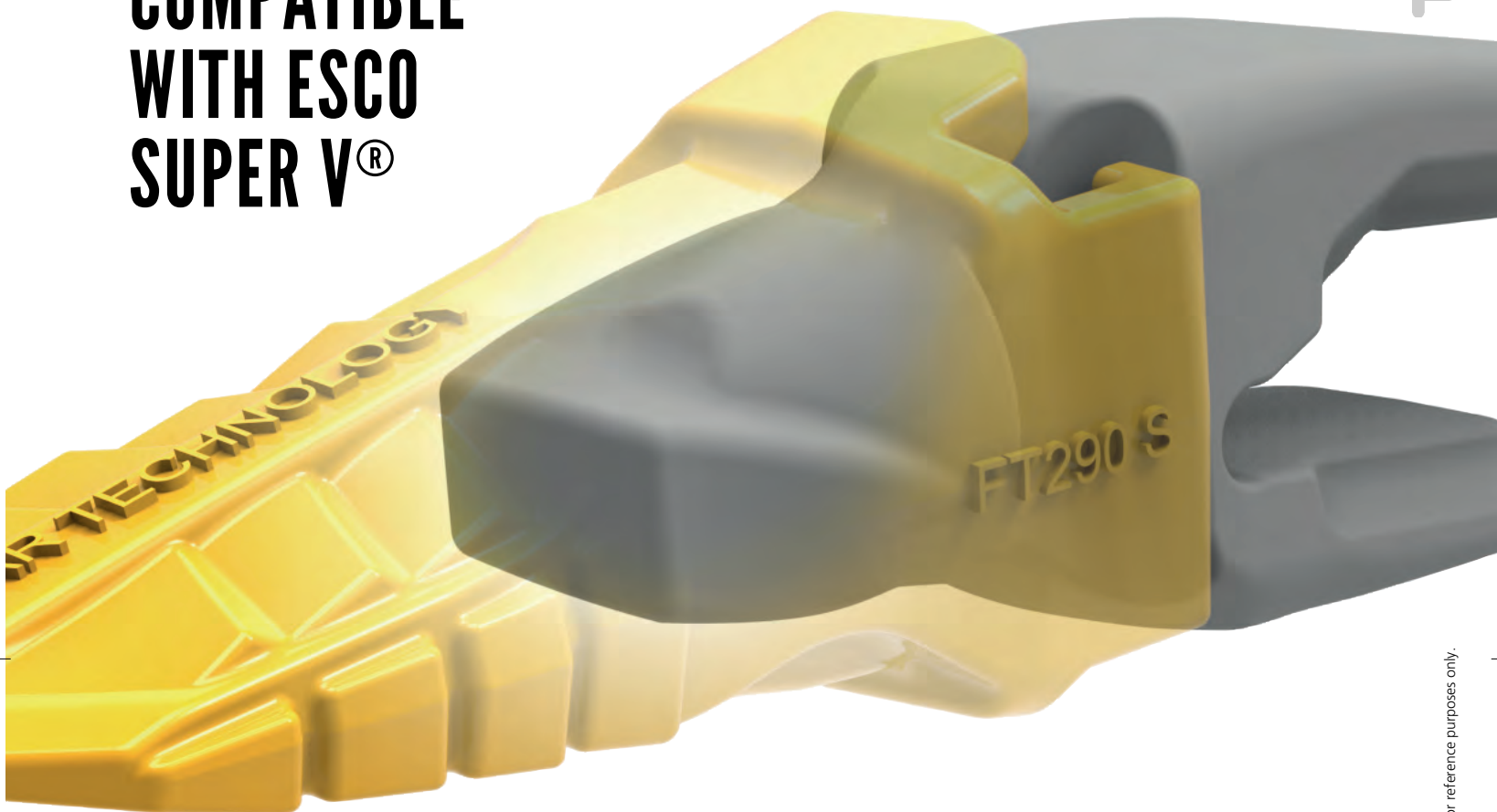




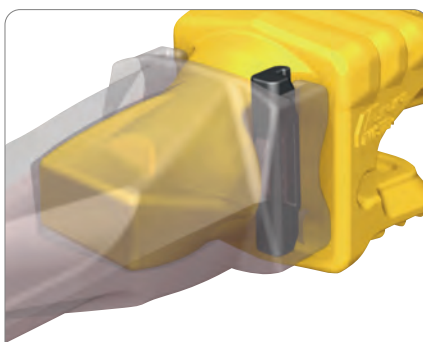
# TWISTER

**COMPATIBLE  
WITH ESCO  
SUPER V®**

**TWISTER**



Teeth compatibility:  
FUTURA TWISTER teeth fit on your current Super V® adapters



Adapters and Weld on Noses:  
FUTURA TWISTER adapters are suitable to be used with Esco Super V® teeth



Complete system featuring teeth, adapters, weld-on noses and pins.  
Sizes: 130 to 810. TWISTER teeth, adapters and pins are suitable to be used with Esco Super V® parts.

## GUIDE TO PART SIZES BY MAXIMUM MACHINE WEIGHT (TONS)

	130	170	190	230	290	330	390	430	510	590	610	690	710	810
STANDARD	5,9	8,7	11,5	16,7	25,0	33,8	46,9	63,6	81,2	103,7	144,1	248,4	345,1	
HD	4,5	6,8	8,9	12,9	19,5	25,0	33,4	46,9	63,6	81,2	103,7	136,4	211,3	
ST/HD	4,4	7,1	10,0	15,7	21,7	29,4	39,9	53,3	67,4	88,8	119,9	188,0	270,5	402,2
EXTRA HD	3,4	5,4	7,6	12,0	16,3	22,1	30,2	39,9	53,3	67,4	88,8	129,9	188,0	275,2
ST/HD								62,2	82,9	110,0	161,1	218,5	334,5	
EXTRA HD								48,6	62,2	82,9	120,4	161,1	231,9	
	LIGHT CONSTRUCTION			CONSTRUCTION				HEAVY CONSTRUCTION			MINING			

## KEY TO PART NUMBERS

<b>FT</b>	<b>33</b>	<b>0</b>	<b>R</b>	<b>PL</b>
BRAND	TYPE	SIZE	VERSION	ROCK PENETRATION LIGHT







# TWISTER

## LOADER

### RPL

ROCK PENETRATION LIGHT



Kg	Lb	Part#	Cross Ref.	Size
1,5	3	FT170 RPL	V17TYL, SD1 CE	170
2,9	6	FT190 RPL	V19TY, SD3 CE	190
4,3	9	FT230 RPL	V23TY, SD4 CE	230
6,0	13	FT290 RPL	V29TYL, SD5 CE	290

### RP

ROCK PENETRATION



Kg	Lb	Part#	Cross Ref.	Size
10,0	22	FT330 RP	V33AD, SD7 SA	330
15,5	34	FT390 RP	V39AD, SD8 SA	390
20,2	44	FT430 RP	V43AD SD9 SA	430
27,1	60	FT510 RP	V51AD SD10 SA	510

### RPHD

ROCK PENETRATION HD



Kg	Lb	Part#	Cross Ref.	Size
43,0	95	FT590 RPHD	V59AR	590
46,6	103	FT610 RPHD	V61ARL	610
89,2	196	FT710 RPHD	V71ARL	710

### F

FLARE



Kg	Lb	Part#	Cross Ref.	Size
4,6	10	FT230 F	V235F	230
7,0	15	FT290 F	V2956F	290
10,4	23	FT330 F	V3357F	330
14,7	32	FT390 F	V3958F	390
20,2	44	FT430 F	V4359F	430
27,5	61	FT510 F	V51510F	510

### S

STANDARD



Kg	Lb	Part#	Cross Ref.	Size
1,0	2	FT130 S	V13SYL, SDM TLR	130
1,5	3	FT170 S	V17SYL, SD1 TLR	170
3,3	7	FT190 S	V19SYL, SD3 TLR	190
4,3	9	FT230 S	V23SYL, SD4 TLR	230
6,2	14	FT290 S	V29SYL, SD5 TLR	290
8,0	18	FT330 S	V33SYL, SD7 TLR	330
11,8	26	FT390 S	V39SYL, SD8 TLR	390
15,9	35	FT430 S	V43SYL, SD9 TLR	430
19,9	44	FT510 S	V51SYL, SD10 TLR	510
26,3	58	FT590 S	V59SYL, SD11 TLR	590
31,5	69	FT610 S	V61SYL	610
40,7	90	FT690 S	V69SYL	690

### RC

ROCK CHISEL



Kg	Lb	Part#	Cross Ref.	Size
8,0	18	FT330 RC	V33SD, SD7 PR	330
11,6	26	FT390 RC	V39SD, SD8 PR	390
16,1	35	FT430 RC	V43SD, SD9 PR	430
21,3	47	FT510 RC	V51SD, V51SDX, SD10 PR	510
26,2	58	FT590 RC	V59SD, V59SDX, SD11 PR	590
32,5	72	FT610 RC	V61SD, V61SDX, SD12 PR	610
46,5	102	FT690 RC	V69SD	690
56,4	124	FT710 RC	V71SD	710
90,3	199	FT810 RC	V81SD	810

### WTL

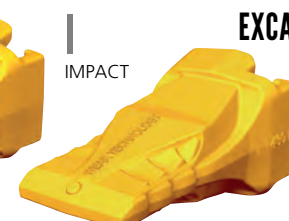
TWIN TIGER LONG



Kg	Lb	Part#	Cross Ref.	Size
0,9	2	FT130 WTL	V13TVY, SDM DPE	130
1,6	3	FT170 WTL	V17TVY, SD1 DPE	170
2,9	6	FT190 WTL	V19TVY, SD3 DPE	190
4,4	10	FT230 WTL	V23TVY, SD4 DPE	230
5,8	13	FT290 WTL	V29TVY, SD5 DPE	290
8,3	18	FT330 WTL	V33TVY, SD7 DPE	330
11,9	26	FT390 WTL	V39TVY, SD8 DPE	390
16,6	37	FT430 WTL	V43TVY, SD9 DPE	430
21,4	47	FT510 WTL	V51TVY, SD10 PRD	510
0		FT590 WTL	V59TVY	590
34,7	76	FT610 WTL	V61TVP	610

## EXCAVATOR

IMPACT



Kg	Lb	Part#	Cross Ref.	Size
4,0	9	FT230 I	V23RYL	230
5,7	13	FT290 I	V29RYL	290
7,3	16	FT330 I	V33RYL	330
11,2	25	FT390 I	V39RYL	390
14,6	32	FT430 I	V43RYL	430
19,8	44	FT510 I	V51RYL	510
25,7	57	FT590 I	V59RYL	590
28,1	62	FT610 I	V61RY	610
44,1	97	FT690 I	V69RYL	690
54,2	119	FT710 I	V71RXL, V71RYL	710
87,0	191	FT810 I	V81RXL V81RYL	810

### WN

WELD-ON NOSE



Kg	Lb	Part#	Cross Ref.	Size
0,5	1,1	FT130 WN		130
0,9	2,0	FT170 WN		170
1,8	4,0	FT190 WN	WN-V19	190
2,7	5,9	FT230 WN	WN-V23	230
3,7	8,1	FT290 WN	WN-V29	290
5,2	11,4	FT330 WN	WN-V33	330
7,2	15,8	FT390 WN	WN-V39	390
10,1	22,2	FT430 WN	WN-V43	430
15,0	32,9	FT510 WN	WN-V51	510
19,0	41,8	FT590 WN	WN-V59	590
23,5	51,7	FT610 WN	WN-V61	610
33,8	74,4	FT690 WN	WN-V69	690
47,5	104,5	FT710 WN	WN-V71	710
84,2	185,2	FT810 WN	WN-V81	810

### TL

TIGER LONG



Kg	Lb	Part#	Cross Ref.	Size
0,8	2	FT130 TL	V13VY, SDM PE	130
1,3	3	FT170 TL	V17VY, SD1 PE	170
2,5	6	FT190 TL	V19VY, SD3 PE	190
3,5	8	FT230 TL	V23VY, SD4 PE	230
5,0	11	FT290 TL	V29VY, SD5 PE	290
6,9	15	FT330 TL	V33VY, SD7 PE	330
9,7	21	FT390 TL	V39VY, SD8 PE	390
13,6	30	FT430 TL	V43VY, SD9 PE	430

### VTL

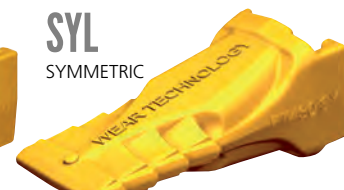
VECTOR TIGER LONG



Kg	Lb	Part#	Cross Ref.	Size
17,5	39	FT510 VTL	V51VY, V51VYH SD10 PE	510
22,8	50	FT590 VTL	V59VY, V59VYH SD11 PE	590
27,8	61	FT610 VTL	V61VX, SD12 PE	610
40,3	89	FT690 VTL	V69VX	690
50,7	112	FT710 VTL	V71VX	710
80,0	176	FT810 VTL	V81VX	810

### SYL

SYMMETRIC



Kg	Lb	Part#	Cross Ref.	Size
0,8	2	FT130 SYL	V13SYL	130
1,3	3	FT170 SYL	V17TYL	170
2,5	6	FT190 SYL	V19SYL	190
3,4	7	FT230 SYL	V23SYL	230
14,7	32	FT430 SYL	V43SYL	430

### PN / HPN

TWISTER PIN

FUTURA TWISTER pins could be re-used several times

FUTURA TWISTER pins are designed to be used with other HELIX style products in the market

Special HOT SLAG pins available

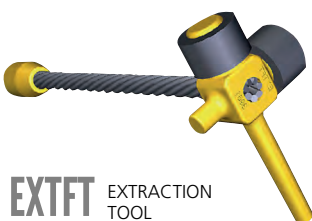


FIG A

FIG B HOT SLAG

FIG C

FIG D HOT SLAG



### EXTFT

EXTRACTION TOOL

Part#	For extraction of Sizes:
EXTFT-1333	130 170 190 230 290 330
EXTFT-3961	390 430 510 590 610
EXTFT-6981	690 710 810

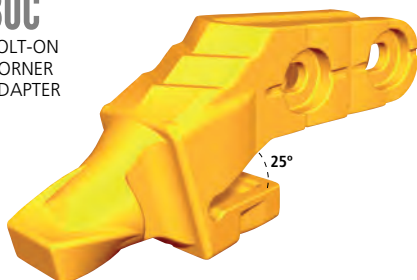




# TWISTER

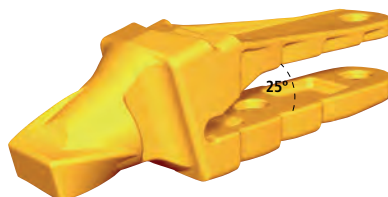
## LOADER

### BOC BOLT-ON CORNER ADAPTER



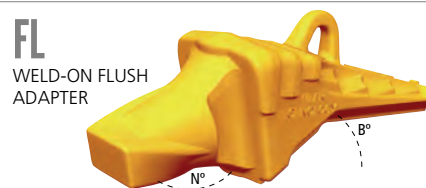
Kg	Lb	B°	N°	Part#	Cross Ref.	Size	
11	24	15	25	1,0" 30 1,2"	<b>FT230-25 BOC23</b>	5788L-V23 5788R-V23	<b>230</b>
12	26	25	35	1,4" 25 1,0"	<b>FT290-35 BOC23</b>	3767-V29	<b>290</b>

### BO16 BOLT-ON ADAPTER



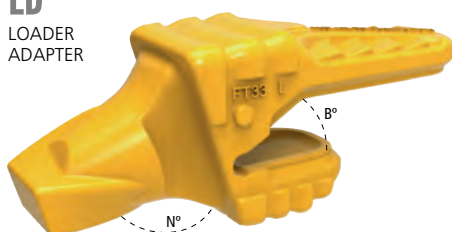
Kg	Lb	N°	B°	Part#	Cross Ref.	Size	
7,6	17	15	25	25 1,0"	<b>FT230-25 BO16</b>	3868A-V23	<b>230</b>
9,4	21	17	25	35 1,4"	<b>FT290-35 BO16</b>	3766A-V29	<b>290</b>

### FL WELD-ON FLUSH ADAPTER



Kg	Lb	N°	B°	Part#	Cross Ref.	Size		
1,3	3	15	22	16	0,8"	<b>FT130 FL</b>	8843-V13	<b>130</b>
2,4	5	15	22	20	0,8"	<b>FT170 FL</b>	8806-V17	<b>170</b>
4,5	10	15	22-25	20-25	0,8"-1"	<b>FT190 FL</b>	8806-V19 8802-V19	<b>190</b>
7,0	15	15	22-25	30-35	1,2"-1,4"	<b>FT230 FL</b>	8803-V23 8802-V23	<b>230</b>
10,0	22	15	22-25	40	1,6"	<b>FT290 FL</b>	8831-V29 3829A-V29	<b>290</b>
13,2	29	15	22-25	40-45	1,6"-1,8"	<b>FT330 FL</b>	8831-V33 3892-V33	<b>330</b>
26,1	57	15	30	63,5	2,5"	<b>FT430 FL</b>	8837-V43 1852-V43	<b>430</b>

### LD LOADER ADAPTER

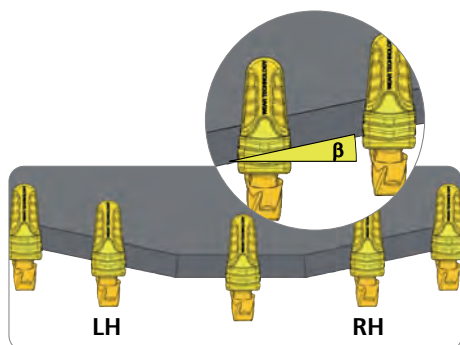


Kg	Lb	N°	B°	Part#	Cross Ref.	Size		
10	21	17	30	40 1,6"	<b>FT290 LD</b>	802A-V29	<b>290</b>	
13	29	17	30	-	<b>FT330 LD</b>	802A-V33		
12	27	17	22	-	<b>FT330-B22 LD</b>	4821-V33	<b>330</b>	
12	27	17	22	15	45 1,8"	<b>FT330-B22 LDLH</b>	4822L-V33	
12	27	17	22	15	-	<b>FT330-B22 LDRH</b>	4822R-V33	
20	44	17	30	-	<b>FT390 LD</b>	1837A-V39		
20	44	17	30	10	50 2,0"	<b>FT390 LDLH</b>	1812LA-V39	<b>390</b>
20	44	17	30	10	-	<b>FT390 LDRH</b>	1812RA-V39	
29	64	17	30	-	<b>FT430 LD</b>	1837A-V43		
29	64	17	30	10	50 2,0"	<b>FT430 LDLH</b>	5840L-V43	
29	64	17	30	10	-	<b>FT430 LDRH</b>	5840R-V43	
29	63	17	22	-	<b>FT430-B22 LD</b>	1810-V43		
29	63	17	22	15	50 0,0"	<b>FT430-B22 LDLH</b>	1810L-V43	<b>430</b>
29	63	17	22	15	-	<b>FT430-B22 LDRH</b>	1810R-V43	
27	60	17	22	-	<b>FT430-60B22 LD</b>	4888-V43		
27	60	17	22	15	60 2,4" 63,5 2,5"	<b>FT430-60B22 LDLH</b>	4888L-V43	
27	60	17	22	15	-	<b>FT430-60B22 LDRH</b>	4888R-V43	
36	80	17	30	-	<b>FT510 LD</b>	1829B-V51		
36	80	17	30	10	60 2,4" 63,5 2,5"	<b>FT510 LDLH</b>	1829LB-V51	
36	80	17	30	10	-	<b>FT510 LDRH</b>	1829RB-V51	
35	77	17	22	-	<b>FT510-B22 LD</b>	8813A-V51	<b>510</b>	
35	77	17	22	15	60 2,4" 63,5 2,5"	<b>FT510-B22 LDLH</b>	8813LA-V51	
35	77	17	22	15	-	<b>FT510-B22 LDRH</b>	8813RA-V51	

### LD LOADER ADAPTER



Kg	Lb	N°	B°	Part#	Cross Ref.	Size		
47	103	17	22	-	<b>FT590-B22 LD</b>	4891-V59		
47	103	17	22	15	70 2,8"	<b>FT590-B22 LDLH</b>	4891L-V59	
47	103	17	22	15	-	<b>FT590-B22 LDRH</b>	4891R-V59	<b>590</b>
46	101	17	22	-	<b>FT590-60B22 LD</b>	5869A-V59		
46	101	17	22	15	60 2,4" 63,5 2,5"	<b>FT590-60B22 LDLH</b>	5869LA-V59	
46	101	17	22	15	-	<b>FT590-60B22 LDRH</b>	5869RA-V59	
58	127	17	30	-	<b>FT610 LD</b>			
58	127	17	30	10	70 2,8"	<b>FT610 LDLH</b>		<b>610</b>
58	127	17	30	10	-	<b>FT610 LDRH</b>		
89	196	17	30	-	<b>FT690 LD</b>			
89	196	17	30	10	90 3,5"	<b>FT690 LDLH</b>		<b>690</b>
89	196	17	30	10	-	<b>FT690 LDRH</b>		
119	262	17	30	-	<b>FT710 LD</b>	5896-V71		
119	262	17	30	10	100 3,9"	<b>FT710 LDLH</b>	5894L-V71	<b>710</b>
119	262	17	30	10	-	<b>FT710 LDRH</b>	5894R-V71	



### WC OPTIONAL WEAR CAP



Extra wear resistance for FUTURA Adapters. One wear cap could be used for several FUTURA adapters. Easy to install. Versatile solution: stock savings

Kg	Lb	Part#	Adapt	Up	Down	Size
1,7	4	<b>F5559 WC</b>	FT590-B22 LD FT590-B22 LDLH FT590-B22 LDRH FT590-60B22 LD FT590-60B22 LDLH FT590-60B22 LDRH	2	3	<b>590</b>
2,7	6	<b>F6061 WC</b>	FT610 LD FT610 LDLH FT610 LDRH	2	2	<b>610</b>
3,7	8	<b>F7069 WC</b>	FT690 LD FT690 LDLH FT690 LDRH	2	2	<b>690</b>
5,4	12	<b>F8071 WC</b>	FT710 LD FT710 LDLH FT710 LDRH	2	2	<b>710</b>

### WEAR CAPS FOR BRADKEN® TWISTLOK® PRO® ADAPTERS



FUTURA TWISTER teeth are needed for the perfect assembly of the wear caps

Kg	Lb	Part#	Cross Ref.
9,2	20	<b>FT610 BWC1</b>	610WC1
13,1	29	<b>FT690 BWC1</b>	690WC1
16,2	36	<b>FT710 BWC1</b>	710WC1
19,3	42	<b>FT810 BWC2</b>	610WC2

### WEAR CAPS FUTURA

Quick and easy installation  
Just slide the wear caps through the adapter guides.

#### Stock saving

Each wear cap could be mounted on various FUTURA adapters.

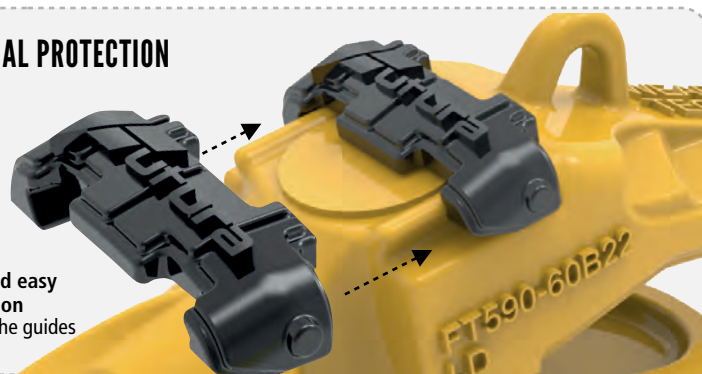
Wear caps help prolong the wear life of each adapter.



Loader adapter mounted with optional wear caps

### OPTIONAL PROTECTION

Quick and easy installation through the guides



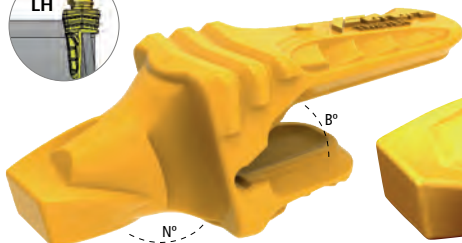




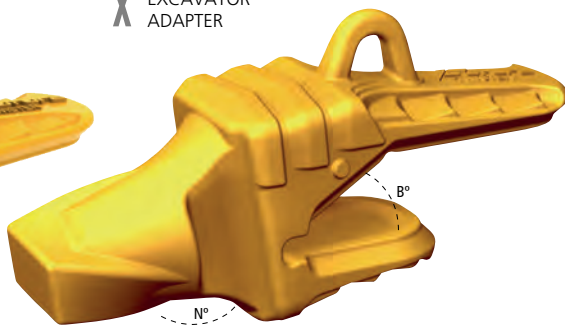
# TWISTER

## EXCAVATOR

**X** EXCAVATOR ADAPTER



**X** EXCAVATOR ADAPTER

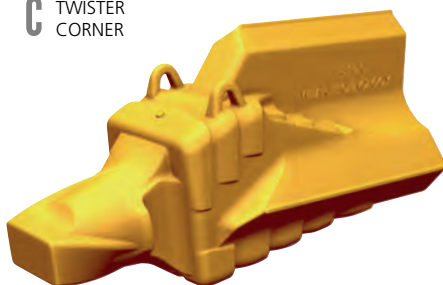


Kg	Lb	N°	B°	↕	Part#	Cross Ref	Corner	Size
38	83	10	30	70	2,8"	<b>FT590</b>	3858-V59	FT590 C <b>590</b>
60	132	10	30	80	3,1"	<b>FT610</b>	5898-V61	FT610 C or FT610 CST <b>610</b>
74	162	10	30	80	3,1"	<b>FT690</b>	5898-V69	FT690 C or FT690 CST <b>690</b>
75	164	10	30	90	3,5"	<b>FT690-90</b>	6803-V69	FT690 C or FT690 CST <b>690</b>
122	267	10	30	90	3,5"	<b>FT710</b>	2837-V71	FT710 C or FT710-100 CST <b>710</b>
118	260	10	30	100	3,9"	<b>FT710-100</b>	5897-V71	FT710 C or FT710-100 CST <b>710</b>
177	390	10	30	120	4,7"	<b>FT810</b>	3869B-V81 5892A-V81	FT810 C or FT810 CST <b>810</b>
200	440	10	30	140	5,5"	<b>FT810-140</b>	6806-V81	FT810 C or FT810-140 CST <b>810</b>

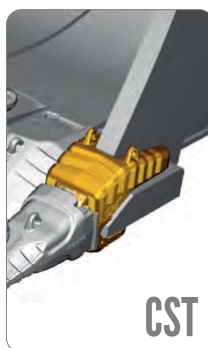
## TWISTER EXCAVATOR CORNERS

Kg	Lb	N°	B°	↕	Part#	Cross Ref	Size
1,2	2,6	15	30		<b>FT130</b>	1610T-V13	
1,1	2,5	15	30	16	0,6"	<b>FT130 LH</b>	<b>130</b>
1,1	2,5	15	30		<b>FT130 RH</b>		
2,0	4,3	15	30		<b>FT170</b>	8841-V17	
1,8	4,0	15	30	20	0,8"	<b>FT170 LH</b>	
1,8	4,0	15	30		<b>FT170 RH</b>		
2,5	5,5	15	23		<b>FT170-25</b>	8842-V17	<b>170</b>
2,3	5,1	15	23	25	1,0"	<b>FT170 25 LH</b>	
2,3	5,1	15	23		<b>FT170-25 RH</b>		
4,8	10,6	15	30		<b>FT190</b>	8822-V19 5854-V19	
4,4	9,6	15	30	25	1,0"	<b>FT190 LH</b>	<b>190</b>
4,4	9,6	15	30		<b>FT190 RH</b>		
6,8	15,0	15	30		<b>FT230</b>	5854-V23	
6,0	13,1	15	30	25	1,0"	<b>FT230 LH</b>	
6,0	13,1	15	30		<b>FT230 RH</b>		
6,5	14,3	15	30		<b>FT230-30</b>	3880-V23 5849-V23	<b>230</b>
5,9	13,1	15	30	30	1,2"	<b>FT230-30 LH</b>	
5,9	13,1	15	30		<b>FT230-30 RH</b>		
8,4	18,5	10	30		<b>FT290</b>	5849-V29	
7,5	16,4	10	30	30	1,2"	<b>FT290 LH</b>	
7,5	16,4	10	30		<b>FT290 RH</b>		
7,8	17,2	10	30		<b>FT290-35</b>	3881A-V29 3871A-V29	
7,1	15,6	10	30	35	1,4"	<b>FT290-35 LH</b>	<b>290</b>
7,1	15,6	10	30		<b>FT290-35 RH</b>		
7,8	17,2	10	30		<b>FT290-40</b>	3882A-V29 5850-V29	
7,2	15,8	10	30	40	1,6"	<b>FT290-40 LH</b>	
7,2	15,8	10	30		<b>FT290-40 RH</b>		
11,4	25,1	10	30		<b>FT330</b>	5855-V33 3882A-V33	
10,4	22,8	10	30	40	1,6"	<b>FT330 LH</b>	<b>330</b>
10,4	22,8	10	30		<b>FT330 RH</b>		
16,3	35,9	10	30		<b>FT390</b>	3810A-V39	
15,0	33,0	10	30	45	1,8"	<b>FT390 LH</b>	<b>390</b>
15,0	33,0	10	30		<b>FT390 RH</b>		
23,2	51,0	10	30		<b>FT430</b>	8801-V43 5856-V43	
20,9	46,0	10	30	50	2,0"	<b>FT430 LH</b>	<b>430</b>
20,9	46,0	10	30		<b>FT430 RH</b>		
28	61	10	30		<b>FT510</b>	5857A-V51 3811-V51	
28	61	10	30	60	2,4"	<b>FT510 LH</b>	<b>510</b>
28	61	10	30	63,5	2,5"	<b>FT510 RH</b>	

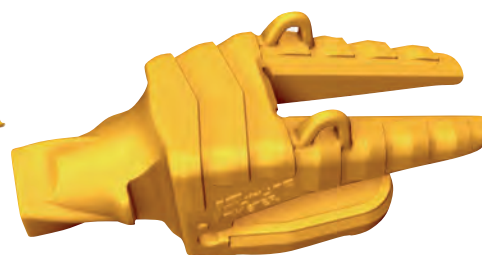
**C** TWISTER CORNER



Kg	Lb	↕	↗	↖	Part#	Cross Ref	Size
94	207	70	2,8"	50	2,0"	<b>FT510 C</b>	- <b>510</b>
107	235	70	2,8"	50	2,0"	<b>FT590 C</b>	- <b>590</b>
152	334	90	3,5"	75	3,0"	<b>FT610 C</b>	RC-V61 R/L CR-V61 LA/RA <b>610</b>
179	394	90	3,5"	75	3,0"	<b>FT690 C</b>	RS-V69 R-V69 L/R <b>690</b>
282	620	100	3,9"	75	3,0"	<b>FT710 C</b>	RS-V71 R-V71 L/R <b>710</b>
431	948	140	5,5"	90	3,5"	<b>FT810 C</b>	6807-V81 R-V81 R1/L1 <b>810</b>

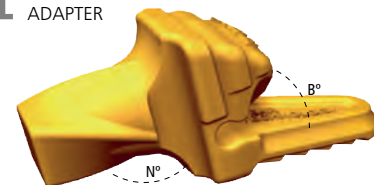


**CST** STRADDLE CORNER



Kg	Lb	↕	↗	↖	Part#	Cross Ref	Size
87	191	80	3,1"	50	2,0"	<b>FT610 CST</b>	6822-V61 <b>610</b>
114	251	90	3,5"	70	2,8"	<b>FT690 CST</b>	6824-V69 <b>690</b>
147	322	100	3,9"	80	3,1"	<b>FT710-100 CST</b>	5899-V71 <b>710</b>
210	462	120	4,7"	90	3,5"	<b>FT810 CST</b>	5895L-V81 5895R-V81 <b>810</b>
218	479	140	5,5"	90	3,5"	<b>FT810-140 CST</b>	6808L-V81 6808R-V81 <b>810</b>

**BL** BOTTOM LEG ADAPTER



Kg	Lb	N°	B°	↕	Part#	Cross Ref	Size
1,0	2	17	30	15	0,6"	<b>FT130 BL</b>	833-V13 <b>130</b>
2,2	5	17	30	20	0,8"	<b>FT170 BL</b>	833-V17 <b>170</b>
3,5	8	17	30	25-30	1"-1,2"	<b>FT190 BL</b>	833-V19 <b>190</b>
4,8	11	15	30	30	1,2"	<b>FT230 BL</b>	3870-V23 <b>230</b>





# TWISTER HAMMERLESS

## RPHD-HL

RPHD



Kg	Lb	Part#	Cross Ref	Size
64,0	141	FT690 RPHD-HL	V69ARL	690
89,5	197	FT710 RPHD-HL	V71ARL	710

## PN-HL

HAMMERLESS PIN



Kg	Lb	Lmm	L in	Part#	Size
0,6	1	107	4,2"	FT590 PN-HL	590
0,8	2	117	4,6"	FT6165 PN-HL	610
1,0	2	121	4,8"	FT690 PN-HL	690
1,4	3	156	6,1"	FT710 PN-HL	710
2,0	4	186	7,3"	FT810 PN-HL	810

## RC-HL

ROCK CHISEL



Kg	Lb	Part#	Cross Ref	Size
26,4	58	FT590 RC-HL	V59SD	590
32,5	72	FT610 RC-HL	V61SD	610
46,7	103	FT690 RC-HL	V69SD	690
58,7	129	FT710 RC-HL	V71SD	710
90,8	200	FT810 RC-HL	V81SD	810

## I-HL

IMPACT



Kg	Lb	Part#	Cross Ref	Size
26,2	58	FT590 I-HL	V59RYL	590
28,3	62	FT610 I-HL	V61RY	610
44,5	98	FT690 I-HL	V69RYL	690
55,0	121	FT710 I-HL	V71RYL	710
87,7	193	FT810 I-HL	V81RYL	810

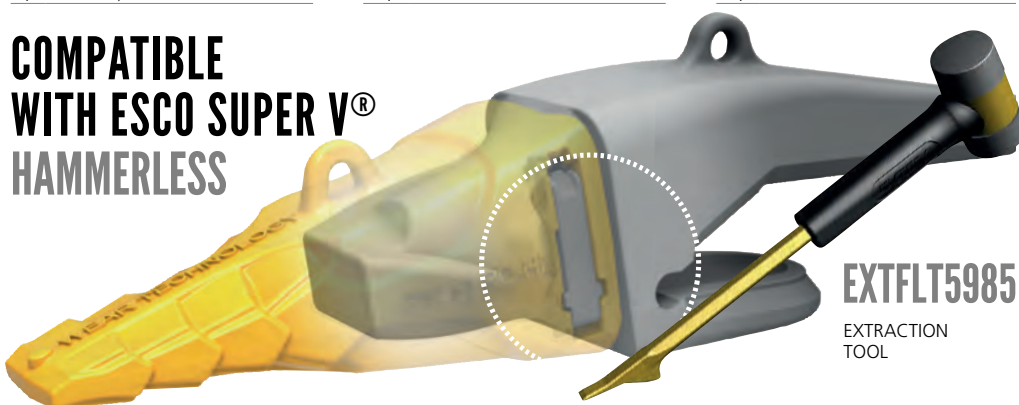
## RX-HL

ROCK X



Kg	Lb	Part#	Cross Ref	Size
54,0	119	FT690 RX-HL		690
70,0	154	FT710 RX-HL	V71RXL	710
102,0	224	FT810 RX-HL	V81RXL	810

COMPATIBLE WITH ESCO SUPER V<sup>®</sup> HAMMERLESS



EXTFLT5985

EXTRACTION TOOL

# T2

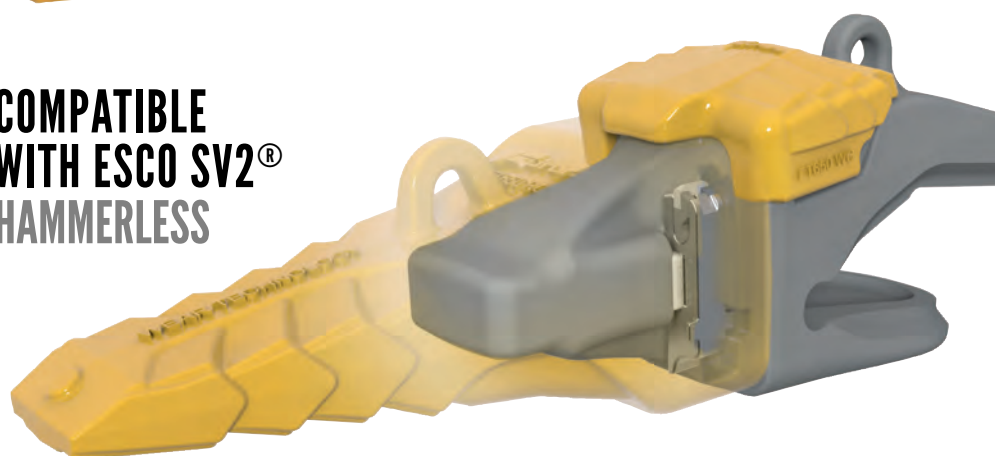
## RPHD

ROCK PENETRATION HD



Kg	Lb	Part#	Cross Ref	Size
55,0	121	FT265 RPHD	65SV2ADHL	265
80,5	177	FT270 RPHD	70SV2ADHL	270
92,0	202	FT275 RPHD	75SV2ADB	275

COMPATIBLE WITH ESCO SV2<sup>®</sup> HAMMERLESS



## RC

ROCK CHISEL



Kg	Lb	Part#	Cross Ref	Size
35,0	77	FT265 RC	65SV2SD	265
51,0	112	FT270 RC	70SV2SD	270
66,0	145	FT275 RC	75SV2SD	275
90,0	198	FT285 RC	85SV2SD	285

## RX

DIPPER X



Kg	Lb	Part#	Cross Ref	Size
43	95	FT265 RX	65SV2RXL 65SV2RX	265
54	118	FT270 RX	70SV2RXL 70SV2RX	270
80	175	FT275 RX	75SV2RXL 75SV2RX	275
100	221	FT285 RX	85SV2RXL 85SV2RX	285

## VX

VECTOR X



Kg	Lb	Part#	Cross Ref	Size
31	68	FT265 VX	65SV2VX	265
45	99	FT270 VX	70SV2VX	270
60	132	FT275 VX	75SV2VX	275
87	191	FT285 VX	85SV2VX	285

## X

EXCAVATOR ADAPTER



Kg	Lb	Part#	Cross Ref	Size
74,0	163	FT265	65SV2	265
85,0	187	FT270	70SV2	270
130,0	286	FT275	75SV2	275
210,0	462	FT285	85SV2	285

## EXTFLT5985

EXTRACTION TOOL



## CHD

DIPPER HEAVY



Kg	Lb	Part#	Cross Ref	Size
101,5	223	FT285 CHD	85SV2RX	285

## WC

WEAR CAP



Kg	Lb	Part#	Cross Ref	Size
8,7	19	FT265 WC	WC265	265
12,7	28	FT270 WC	WC270	270
17,0	37	FT275 WC	WC275	275
21,0	46	FT285 WC	WC285	285

## PN-HL

HAMMERLESS PIN



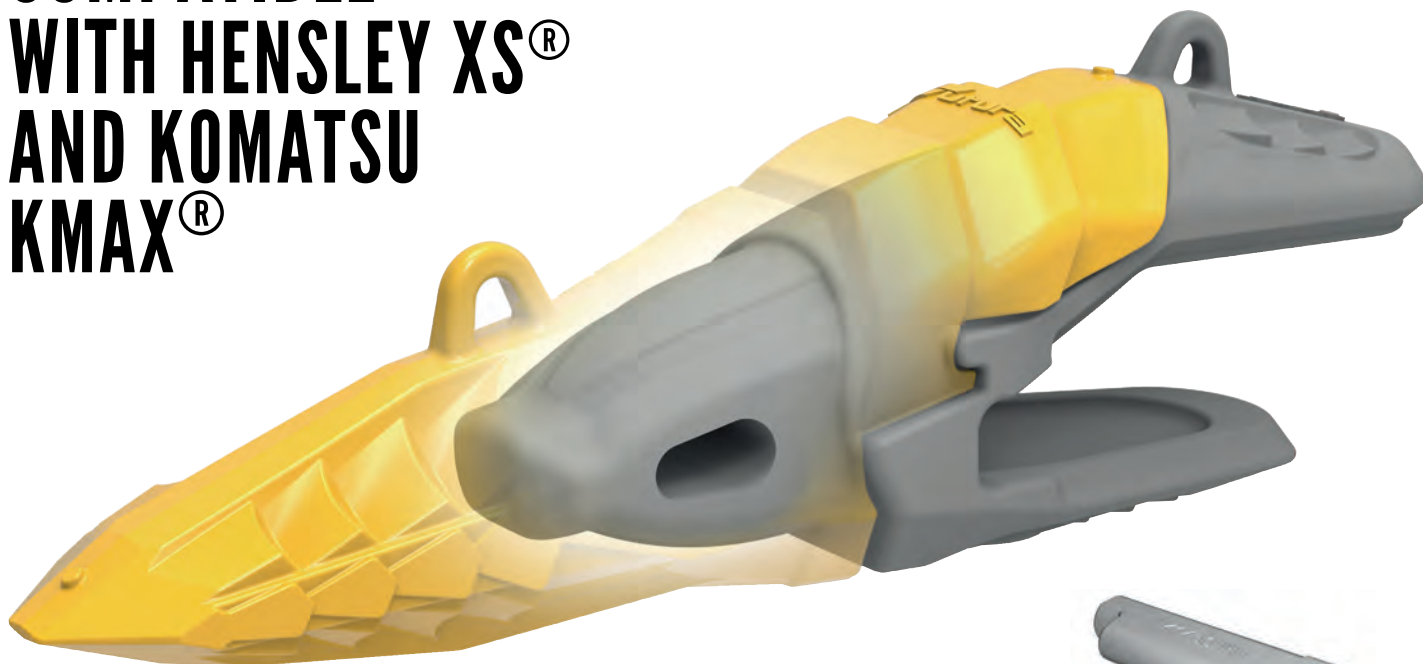
Kg	Lb	Lmm	L in	Part#	Size
0,8	2	117	4,6"	FT6165 PN-HL	265
1,2	3	131	5,2"	FT270 PN-HL	270
1,2	3	147	5,8"	FT275 PN-HL	275
1,8	4	157	6,2"	FT285 PN-HL	285







# COMPATIBLE WITH HENSLEY XS<sup>®</sup> AND KOMATSU KMAX<sup>®</sup>



**RC**  
ROCK  
CHISEL



**PN**  
HAMMERLESS  
PIN



## NEW PRODUCT

Kg	Lb	Part#	Cross Ref	Size
28,6	63	<b>FK850 RC</b>	XS85 RC	<b>850</b>
48,4	106	<b>FK1150 RC</b>	XS115RC	<b>1150</b>
62,0	136	<b>FK1450 RC</b>	XS145 RC	<b>1450</b>
80,0	176	<b>FK2500 RC</b>	XS250 RC	<b>2500</b>
117,9	259	<b>FK3400 RC</b>	XS340RC	<b>3400</b>

Kg	Lb	Part#	Cross Ref	Size
2,0	4	<b>FK850 PN</b>	XS85 PC	<b>850</b>
2,5	6	<b>FK1150 PN</b>	XS115PC	<b>1150</b>
3,8	8	<b>FK1450 PN</b>	XS145 PC	<b>1450</b>
5,0	11	<b>FK2500 PN</b>	XS250 PC	<b>2500</b>
5,5	12	<b>FK3400 PN</b>	XS340PX	<b>3400</b>

### LATERAL RIBS

Extra wear material on lateral ribs contribute to self-sharpening effect

### UNDERSIDE POCKET

Maintains bit sharpness without comprising point integrity

### REINFORCED TOOTH BOX

Protects pin and tooth pocket

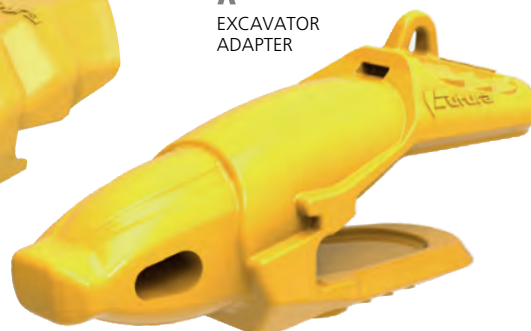
## TOOTH DESIGN



**WC**  
WEAR  
CAP



**X**  
EXCAVATOR  
ADAPTER



Kg	Lb	Part#	Cross Ref	Size
12,7	28	<b>FK1450WC</b>	WC1450	<b>1450</b>
14,5	32	<b>FK2500WC</b>	WC2500	<b>2500</b>
17,0	37	<b>FK3440WC</b>	WC3440	<b>3440</b>

Kg	Lb	Part#	Cross Ref	Size
46,2	102	<b>FK850-75</b>	1300XS85	<b>850</b>
62,8	138	<b>FK1150-90</b>	HL350XS115	<b>1150</b>
105,0	231	<b>FK1450-120</b>	HL443XS145	<b>1450</b>
133,0	293	<b>FK2500-140</b>	H255XS250	<b>2500</b>
162,5	358	<b>FK3400</b>	H140XS340	<b>3400</b>

XS<sup>®</sup> and KMAX<sup>®</sup> are registered trademarks of Hensley<sup>®</sup> and Komatsu<sup>®</sup>. Manufacturer's names, descriptions, pictures and part numbers are used for reference purposes only.





# miner



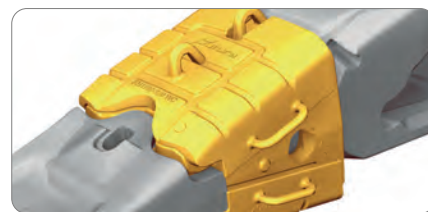
## FUTURA MINER FOR MACHINES UP TO 800 TN



Futura Miner teeth will fit onto an Escó® Standard Posilok® as well as a Posilok® Plus Intermediate adapter.



Futura Miner Intermediate adapters will fit onto an Escó® Posilok® adapter and are DRP for Hensley®, Escó® or Caterpillar® Intermediate adapters.



Escó® Posilok® and Posilok® Plus teeth will fit onto Futura Miner Intermediate adapters.

### FUTURA MINER SIZE 950

**RC**  
ROCK  
CHISEL



Kg	Lb	Part#	Cross Ref.	Size
106,8	235	FM950 RC	fits S95SD	950

**RCXL**  
ROCK  
CHISEL XL



Kg	Lb	Part#	Cross Ref.	Size
129,0	284	FM950 RCXL	fits S95VX	950

**I**  
IMPACT



Kg	Lb	Part#	Cross Ref.	Size
104,0	229	FM950 I	fits S95RS	950

FUTURA MINER TEETH SIZE 950 COULD BE LOCKED WITH BOTH: ESCO® SIDEWINDER® OR WITH FUTURA PINS

**PNK**



MINING  
PIN



Lmm	in	Ø	in	Kg	Lb	Part#	Cross Size
280	11	61	2,4	5,2	11	FM950 PNK	S95RPN 950

## NEW: FUTURA MINER SOLID TEETH SIZES 1100 1300 1450

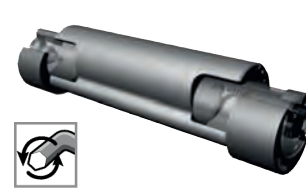


**RC** FUTURA MINER SOLID TOOTH



Kg	Lb	Part#	Size
197,0	433,4	FM1100 RC	1100
284,0	624,8	FM1300 RC2	1300
0,0	0,0	COMING SOON	1450

**PIAK** SOLID TOOTH PIN



L	in	Kg	Lb	Part#	Cross R.	Size
327	12,9	5	12	FM1100 PIAK	S110PN	1100
378	14,9	8	18	FM1300 PIAK	S130PNA	1300
443	17,4	15	32	FM1450 PIAK	S145PNA	1450 1600







# miner

## MINER TEETH SIZES 920, 1120 AND 1220

**RC**  
ROCK  
CHISEL



Kg	Lb	Part#	Cross Ref.	Tooth	Adpt
61	133	<b>FM920 RC</b>	DRP 92KHA, 92TKHA	920	<b>1100</b>
76	167	<b>FM1120 RC</b>	DRP 112KH, 112TKH	1120	<b>1300</b>
105	231	<b>FM1220 RC</b>	DRP 122KH, 122TKH	1220	<b>1450</b>

**RCXL**  
ROCK  
CHISEL XL



Kg	Lb	Part#	Cross Ref.	Tooth	Adpt
77	169	<b>FM920 RCXL</b>	DRP 92KHRML, 92TKHRML	920	<b>1100</b>
99	218	<b>FM1120 RCXL</b>	DRP 112KHRML, 112TKHRML	1120	<b>1300</b>
134	295	<b>FM1220 RCXL</b>	DRP 122KHM, 122TKRXL	1220	<b>1450</b>

**WT**  
TWIN  
TIGER



Kg	Lb	Part#	Cross Ref.	Tooth	Adpt
76	167	<b>FM1120 WT</b>	DRP 112KTVL, 112TKTL	1120	<b>1300</b>
94	207	<b>FM1220 WT</b>	DRP 122KTV, 112TKTV	1220	<b>1450</b>

**WC** MINER  
CAPS

Kg	Lb	Part#	Cross Ref	PIN	Size
22	48	<b>FM950 WC</b>	WC99		<b>950</b>
26	58	<b>FM1100 WC</b>	WC95	WC1100 PN	<b>1100</b>

Caps will fit onto Escro® adapters.  
Use Futura WC1100 PN  
pin for assembly

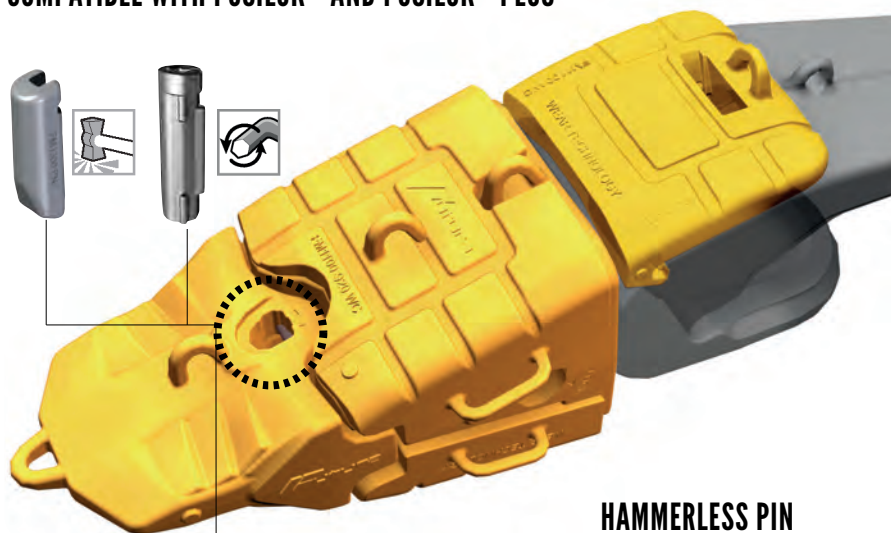


**EXTFM**

PIN EXTRACTOR  
FOR MINING PINS  
FM920 PN, FM1120 PN, FM1220 PN

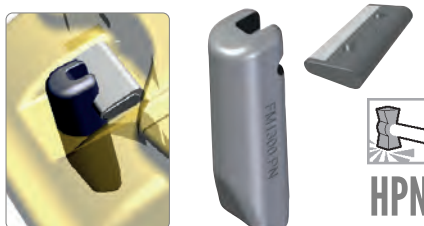


## FUTURA MINER ASSEMBLY SIZES 1100, 1300 AND 1450 COMPATIBLE WITH POSILOK® AND POSILOK® PLUS

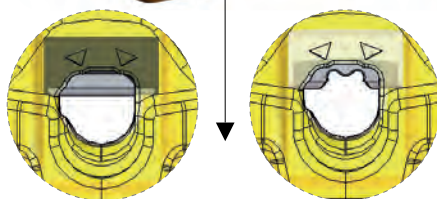


### STANDARD MINING PIN

Locks teeth into Posilok® and Posilok® Plus intermediate adapters



Lmm	in	Ø	in	Kg	Lb	Part#	Cross Ref	Tooth	Size
147	5,8	38	1,5	1,2	2,6	<b>FM920 PN</b>	DRP PN92K	920	<b>1100</b>
158	6,2	44	1,7	1,6	3,5	<b>FM1120 PN</b>	DRP PN112KC	1120	<b>1300</b>
189	7,4	50	2,0	2,3	5,0	<b>FM1220 PN</b>	DRP PN122KC	1220	<b>1450</b>



### ONE TOOTH TWO PIN OPTIONS: STANDARD OR HAMMERLESS

Maximum compatibility  
One tooth covers two systems:  
HAMMERLESS and NON-HAMMERLESS  
Fits onto Posilok® STANDARD and  
Posilok® PLUS intermediate adapters.

### HAMMERLESS PIN

Locks teeth into Posilok® Plus intermediate adapters



Lmm	in	Ø	in	Kg	Lb	Part#	Cross Ref	Tooth	Size
147	5,8	38	1,5	1,5	3,4	<b>FM920 HLK</b>	92TK PN	920	<b>1100</b>
158	6,2	44	1,7	1,8	4,0	<b>FM1120 HLK</b>	112TKPN-B	1120	<b>1300</b>
180	7,1	43	1,7	3,8	8,3	<b>FM1220 HLK</b>	122TKPN	1220	<b>1450</b>

## FUTURA MINER INTERMEDIATE ADAPTER

**WC**  
INTERME-  
DIATE  
ADAPTER  
OPTIONAL  
WEAR CAP



Kg	Lb	Part#	IA	Size
28	61	<b>FM1100-920 WC</b>	FM1100-920 IA	<b>1100</b>
40	87	<b>FM1300-1120 WC</b>	FM1300-1120 IA	<b>1300</b>
55	120	<b>FM1450-1220 WC</b>	FM1450-1220 IA	<b>1450</b>

**IA**  
INTERMEDIATE  
ADAPTER



Kg	Lb	Part#	DRP Posilok	Posilok Plus	Hensley	Caterpillar	Size
134	295	<b>FM1100-920 IA</b>	S110H92K	S110H92TK	390TS922		<b>1100</b>
192	422	<b>FM1300-1120 IA</b>	S130H112K	S130H112TK	640TS1122	345-9667	<b>1300</b>
288	634	<b>FM1450-1220 IA</b>	S145H122K	S145H122TK	800TS1222		<b>1450</b>

2 PIN  
OPTIONS  
ESCO  
SIDEWINDER®  
OR FUTURA PIN

**PIAK**

INTERMEDIATE  
ADAPTER PIN



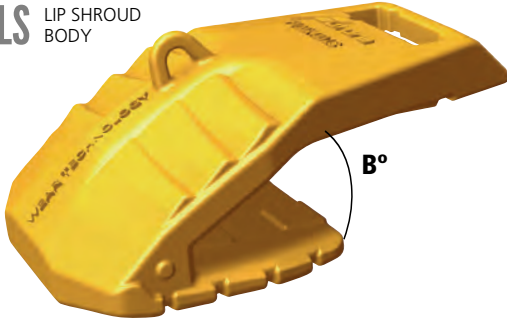
Lmm	in	Ø	in	Kg	Lb	Part#	Cross Ref	Size
327	12,9	62	2,4	5,3	11,7	<b>FM1100 PIAK</b>	S110PN	<b>1100</b>
378	14,9	61	2,4	8,0	17,6	<b>FM1300 PIAK</b>	S130PNA	<b>1300</b>
443	17,4	93	3,7	14,5	31,9	<b>FM1450 PIAK</b>	S145PNA	<b>1450</b> <b>1600</b>





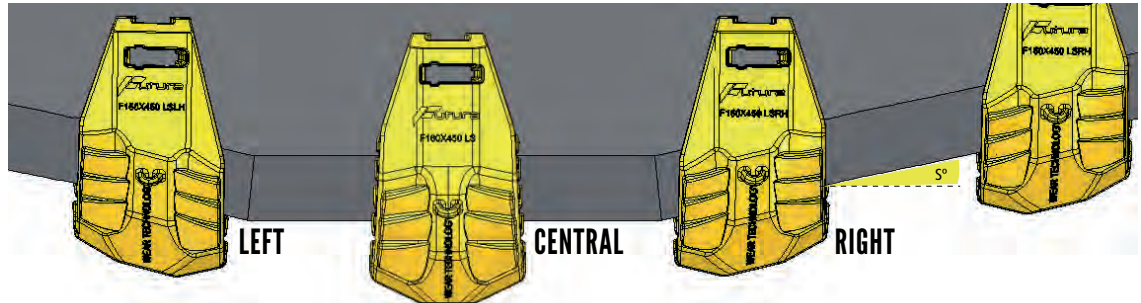
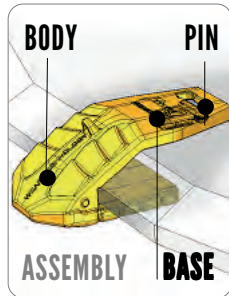
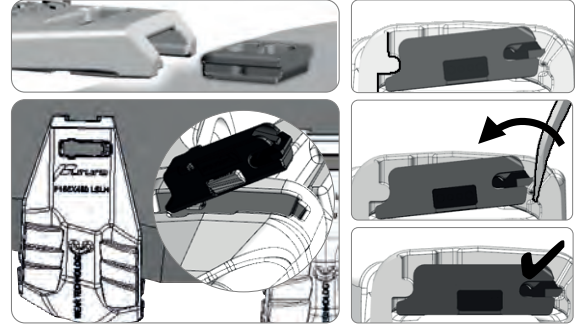
# mineral

**LS** LIP SHROUD BODY



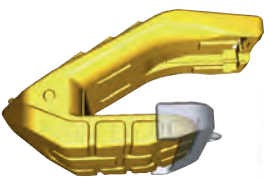
**EXTFLS**

PIN EXTRACTOR FOR LIP SHROUDS



Kg	Lb	↕	B°	S°	LSLH PART#	Cross Ref	LS PART#	Cross Ref	LSRH PART#	Cross Ref	Base	Pin	TYPE
45	98	90	3,5"	30	F90X245 LSLH	TAC90X245-2LA	F90X245 LS	TAC90X245-1A	F90X245 LSRH	TAC90X245-2RA			EXCAVATOR
79	174	90	3,5"	30	F90X320 LSLH	TAC90X320-6L	F90X320 LS	TAC90X320-5	F90X320 LSRH	TAC90X320-6R	FAB	FAP	EXCAVATOR
159	350	90	3,5"	30	F90X435 LDSLH	TBC90X435-2LC	F90X435 LDS	TBC90X435-1C	F90X435 LDSRH	TBC90X435-2RC			LOADER
85	187	100	3,9"	30	F100X290 LSLH	TBC100X290-4L	F100X290 LS	TBC100X290-3	F100X290 LSRH	TBC100X290-4R			EXCAVATOR
88	194	100	3,9"	30	F100X320 LSLH	TBC100X320-2LA	F100X320 LS	TBC100X320-1B	F100X320 LSRH	TBC100X320-2RA			EXCAVATOR
129	284	100	3,9"	30	F100X410 LDSLH	TBC100X400-2LB	F100X410 LDS	TBC100X400-1B	F100X410 LDSRH	TBC100X400-2RB			LOADER
126	277	100	3,9"	30	F100X410 LSLH	TBC100X410-4L	F100X410 LS	TBC100X410-3	F100X410 LSRH	TBC100X410-4R			EXCAVATOR
216	475	100	3,9"	22	F100X410B22 LDSLH	TBC100X410-6LA	F100X410B22 LDS	TBC100X410-5A	F100X410B22 LDSRH	TBC100X410-6RA			LOADER
133	293	100	3,9"	30	F100X430 LSLH	TBC100X430-2L	F100X430 LS	TAC100X430-1	F100X430 LSRH	TBC100X430-2R			EXCAVATOR
120	264	120	4,72"	30	F120X330 LSLH	TBC120X330-2LA	F120X330 LS	TAC120X330-1A	F120X330 LSRH	TBC120X330-2RA			EXCAVATOR
149	328	120	4,72"	30	F120X375 LSLH		F120X375 LS		F120X375 LSRH				EXCAVATOR
154	339	120	4,72"	30	F120X410 LSLH	TBC120X410-3L	F120X410 LS	TBC120X410-4	F120X410 LSRH	TBC120X410-3R	FBB	FBP	EXCAVATOR
127	279	120	4,72"	30	F120X440 LSLH	TBC120X440-2LB	F120X440 LS	TBC120X440-1B	F120X440 LSRH	TBC120X440-2RB			EXCAVATOR
174	383	140	5,5"	30	F140X420 LSLH	TBC140X420-2LA	F140X420 LS	TBC140X420-1A	F140X420 LSRH	TBC140X420-2RA			EXCAVATOR
221	486	140	5,5"	30	F140X465 LSLH	TBC140X465-1RB	F140X465 LS		F140X465 LSRH	TBC140X465-1RB			EXCAVATOR
230	506	140	5,5"	30	F140X490 LSLH	TBC140X490-2LB	F140X490 LS	TBC140X490-1B	F140X490 LSRH	TBC140X490-2RB			EXCAVATOR
230	506	140	5,5"	30	F140X575 LSLH	TBC140X575LA		TBC140X57-1A	F140X575 LSRH	TBC140X575RA			EXCAVATOR
244	537	160	6,3"	30	F160X450 LSLH	TBC160X450-2L	F160X450 LS	TBC160X450-1	F160X450 LSRH	TBC160X450-2R			EXCAVATOR
354	779	160	6,3"	30	F160X570 LSLH	TBC160X570-1L		TBC160X570	F160X570 LSRH	TBC160X570-1R			EXCAVATOR
387	851	230	9,0"	30			F230X430 LS	TCCF130-28					EXCAVATOR
455	1.001	230	9,0"	30			F230X600 LS	TCCF130-16A TCC130-25C					EXCAVATOR
344	757	245	9,6"	30			F245X410 LS	TCCF145-4 TCCF145-5			FCB	FCP	EXCAVATOR
472	1.038	245	9,6"	30			F245X570 LS	TCCF145-3 TCCF145-6 TCCF145-8					EXCAVATOR

**TB** OPTIONAL THRUST BLOCKS



Part#	Lip Shroud
TB140	F140X575 RH/LH
TB160140	F140X420 LS/RH/LH F160X450 LS/RH/LH
TB230	F230X430 LS

**BASE** LIP SHROUD BASE



Kg	Lb	Part#	Cross
0,8	1,8	FAB	TAB
1,9	4,1	FBB	TBB
3,9	8,5	FCB	TCB

**PIN** LIP SHROUD PIN



Kg	Lb	Part#	Cross
0,9	2,0	FAP	TAP
2,2	4,8	FBP	TBP
7,6	16,7	FCP	TCP

**EXTFLS**



**FE** LIP SHROUD WELD-ON TYPE



Kg	Lb	Part#	↕	Cross Ref
34,6	76	FEB90	80 3,1"	B90
36,4	80	FEB90 L	100 3,9"	B90L
36,0	79	FEB90 R		B90R
42,0	92	F120 LS		CESA 24 26-2A
41,9	92	F120 LSRH	120 4,7"	CESA 24 26-2A/RA
41,9	92	F120 LSLH		CESA 24 26-2A/LA





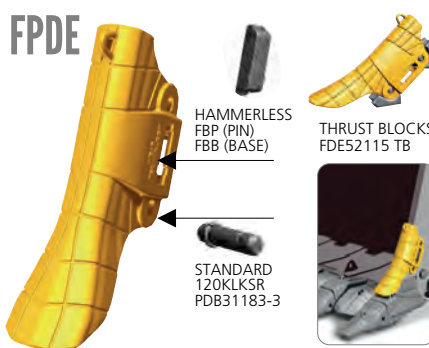


# miner

## BOLT-ON WING SHROUDS. 2 LOCKING OPTIONS: STANDARD OR HAMMERLESS



Lmm	in	Kg	Lb	Part#	Cross Ref	Thrust Block
796	31,3	50	2,0	59,1	130	FES4410 ES4410 FDD32816 TB

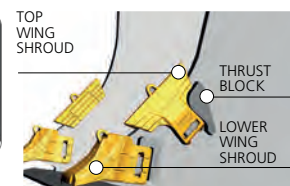


Kg	Lb	Lmm	in	Part#	Cross Ref	Thrust Block
132	290	884	34,8	80	3,1	FPDE52445 PDE52445 FDE52445 TB

## FUTURA MINING WING SHROUDS



Kg	Lb	L	in	Part#	Cross Ref	Base Pin	Thrust Block	Cross Ref
27	59	440	17,3	40	1,6	F40X440 UWS TAW40X440-1A	FAB FAP FDD33095 TB	PDD33095#1
34	74	600	23,6	F40X600 UWS TAW40X600-1	FAB FAP FDE51413 TB	PDE51413#3		
50	110	505	19,9	50	2,0	F50X505 UWS TAW50X505-2	FAB FAP FDD32816 TB	PDD32816#1
31	68	505	19,9	F50X505B UWS TAW50X505-1A	FAB FAP FDD32816 TB	PDD32816#1		
52	114	545	21,5	75	3,0	F75X545 UWS TBW75X545-1A	FBB FAP FDE1987 TBLH	PDE51987#2L
99	218	655	25,8	F75X655 UWS TBW75X655-1	FBB FAP FDE1987 TBRH	PDE51987#2R		
235	517	855	33,7	90	3,5	F90X855 UWS TBW90X855-1A	FBB FAP FDD32678 TB	PDD32678#1
166	365	760	29,9	120	4,7	F120X760 UWS TAW120X760-1	FAB FAP FDD33024 TB	PDD33024#1
239	526	800	31,5	140	5,5	F140X800 UWS TBW140X800-1	FBB FAP FDD33366 TB	PDD33366#1



## UWS TOP WING SHROUD



## LWS LOWER WING SHROUD



Kg	Lb	Part#	Cross Ref	Base Pin	Thrust Block	Cross Ref
69,0	152	50	2,0	F50 LWS TAW50-1	FAB FAP	
75,7	167	65	2,6	F65 LWS TAW65-1	FAB FAP FDD33808 TB	PDD33808
81,5	179	75	3,0	F75 LWS TAW75-1	FAB FAP FDD33808 TB	PDD33808
85,0	187	90	3,5	F90 LWS TAW90-1	FAB FAP FDD33808 TB	PDD33808
91,0	200	115	4,5	F115 LWS TAW115-1	FAB FAP FDD33312 TB	PDD33312#1
113,0	249	135	5,3	F135 LWS TAW135-1	FAB FAP FDD33312 TB	PDD33312#1
194,0	427	165	6,5	F165 LWS-RH TBW165-1R	FBB FAP FDD33367 TB	PDD33367#1
				F165 LWS-LH TBW165-1L	FBB FAP FDD33367 TB	PDD33367#1

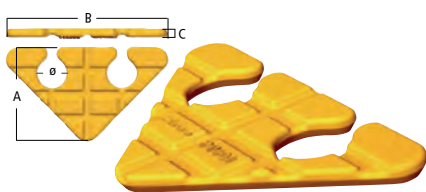
# FUTURA MINER QUICK SELECTION GUIDE

NOSE SIZE	950 TOOTH 950	1100 TOOTH 920	1300 TOOTH 1120	1450 TOOTH 1220
MACHINE WEIGHT	<350T	350-500T	500-750T	750-1000T
HITACHI	EX3500 EX3500-3	EX3600 EX2600	EX5500 EX5600	EX8000
TEREX	RH120E	RH170	RH340 RH360	RH400
CATERPILLAR	6030, 5230ME 3560B	6040, 6050B 5230B	6060FS	6090FS
KOMATSU	PC3000 PC3000-6	PC4000	PC4000 PC5500 PC5500-6	PC8000
KOMAT. (DEMAG)	H285	H285S	H485S	H48JS
LIEBHERR	R994, R9250	R9250, R9400 R9350, R994B	R995	R9800, R996



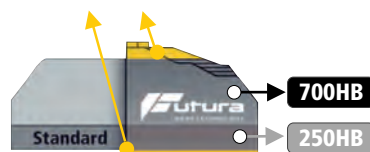


**PTV 400HB** WELD-ON WEAR PAD

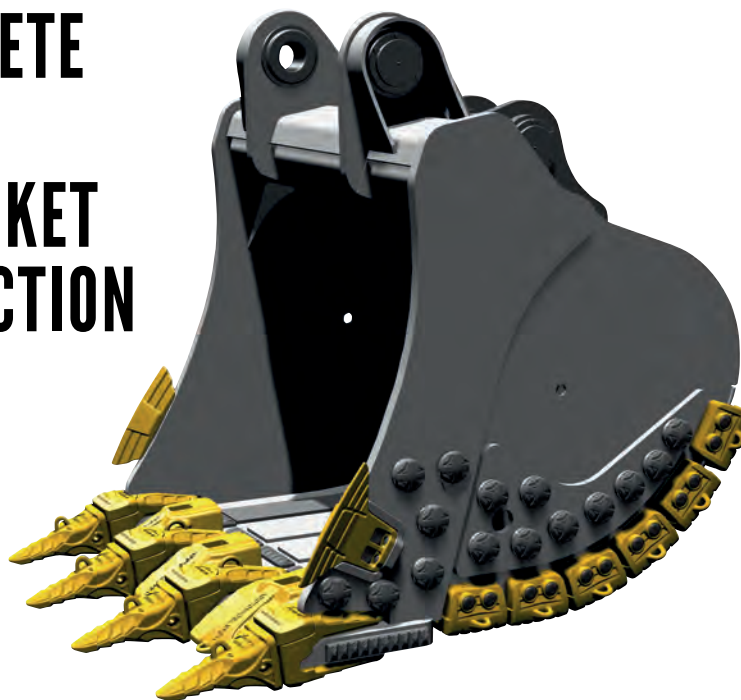


A	B	C	Ø	Kg.	Lb	Part#			
158	6,2"	275	10,8"	16	0,6"	50 2,0"	2,0	4	<b>PTV-01</b>

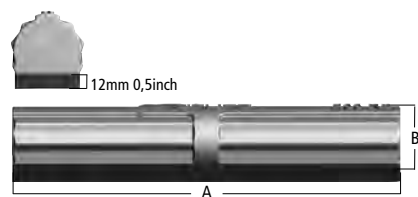
FUTURA buttons & bars are manufactured with **20% more wear material** in the wear area and the welding plate than other standard buttons and bars



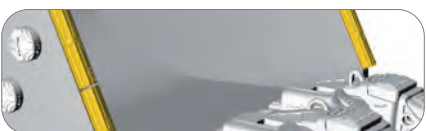
# COMPLETE RANGE OF BUCKET PROTECTION PARTS



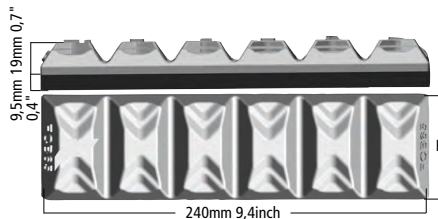
**RB 700HB** ROLL BAR 700HB



A	B	Ø	Kg.	Lb	Part#	Cross Ref		
229	9"	28 1,1"	35	1,4"	1,9	4	<b>F35 RB</b>	280-4096
305	12"	42 1,7"	55	2,2"	5,7	12	<b>F55 RB</b>	280-4097
305	12"	59 2,3"	80	3,1"	10,8	24	<b>F80 RB</b>	280-4098



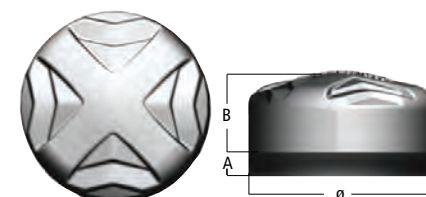
**CB 700HB** CHOCKY BARS 700HB



B	Kg.	Lb	Part#	Cross Ref	
25	1,0"	1,0	2	<b>F25 CB</b>	D25CB
40	1,6"	1,6	4	<b>F40 CB</b>	D38CB, CB40N, 1086NA
50	2,0"	2,1	5	<b>F50 CB</b>	D51CB, CB50N
65	2,6"	2,8	6	<b>F65 CB</b>	D64CB, CB65N, 1088NA
100	3,9"	4,3	9	<b>F100 CB</b>	D100CB, CB100N
150	5,9"	5,7	13	<b>F130 CB</b>	D130CB, CB130N, 090NA



**WB 700HB** WEAR BUTTONS 700HB



A	B	Ø	Kg.	Lb	Part#	Cross Ref		
9,5	0,4"	21 0,8"	60	2,4"	0,6	1	<b>F60 WB</b>	D50BN WB60
9,5	0,4"	28 1,1"	75	3,0"	1,1	2	<b>F75 WB</b>	D75BN WB75
9,5	0,4"	34 1,3"	90	3,5"	1,4	3	<b>F90 WB</b>	D90BN WB90
13	0,5"	35 1,4"	115	4,5"	3,3	7	<b>F115 WB</b>	D114BN D150BN WB150
16	0,6"	45 1,8"	150	5,9"	7,2	16	<b>F150 WB</b>	



**WS 450HB** WELD-ON 450HB SIDE CUTTERS

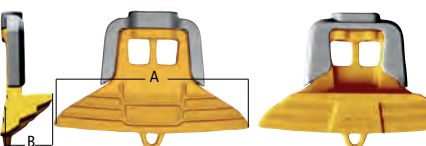
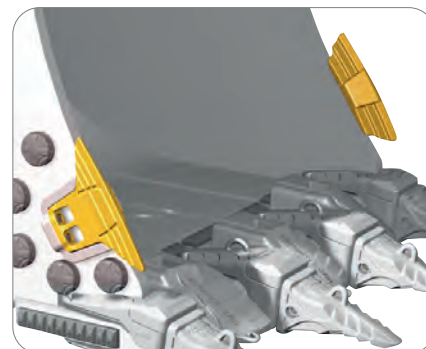


mm	inch	A	B	Kg.	Lb	Part#	Cross Ref	
150	5,9"	32 1,3"	1,6	4	<b>F150 WS</b>	14,5 16	0,6"	
200	7,9"	40 1,6"	3,4	7	<b>F200 WS</b>	20	0,8"	
280	11,0"	40 1,6"	5,0	11	<b>F280 WS</b>	28	1,1"	WP72S

**SC 500HB** MECHANICALLY ATTACHED 500HB SIDE CUTTERS



mm	inch	A	B	Kg.	Lb	Part#	Cross Ref
483	19,0"	106 4,2"	28,3	62	<b>F3050 SC</b>	30 1,2" 50 2"	TAW38X440 TAW40X440 TAW50X505
603	23,7"	373 14,7"	58,7	129	<b>F6080 SC</b>	60 2,4" 80 3,1"	TBW75X545 TBW75X655



Other manufacturer's names, descriptions, pictures and part numbers are used for reference purposes only.







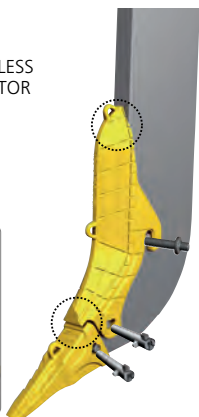


# RIPPER

## FUTURA CLACK SYSTEM 100% COMPATIBLE WITH YOUR CURRENT CATERPILLAR RIPPER SHANKS

### RPT

NEW HAMMERLESS  
RIPPER PROTECTOR  
IMPROVED  
DESIGN FOR  
EXTRA SHANK  
AND TOOTH  
PROTECTION



### R1

SHORT



## INCREASED SAFETY

Increased pin retention: HL2 pins are securely locked in place. Rubber inster under locking tab allows the locking tab (fig 3) to compress, rotate and lock. Easy to install and remove with a hex wrench.



## HAMMERLESS SOLUTION

System compatible with your Caterpillar style ripper shank. All FUTURA CLACK teeth can be used with the FUTURA HAMMERLESS SYSTEM as well as with the standard Caterpillar pin and washers.



### HP

HAMMERLESS  
PIN

Kg	Lb	↔↔	Part#	OEM
51	111	75 3,0"	<b>FC75 RPT</b>	6J-8814 132-4716
106	233	90 3,5"	<b>FC90 RPT</b>	9W-8365 132-1014
109	239	100 3,9"	<b>FC100 RPT</b>	6Y-8960 132-1015
147	322	110 4,3"	<b>FC110 RPT</b>	9N-4621 132-1016

Kg	Lb	Part#	OEM	Size
19,3	42	<b>FC450 R1</b>	9W-2451 4T-5451	<b>R450</b>
32,0	70	<b>FC500 R1</b>	4T-4501 4T-5501	<b>R500</b>
51,1	112	<b>FC550 R1</b>	9W-4551	<b>R550</b>

Kg	Lb	Part#	OEM	Size
6,3	14	<b>FC300 R2</b>	4T-4302 6Y-0309	<b>R300</b>
14,6	32	<b>FC350 R2</b>	6Y-0352 6Y-0359	<b>R350</b>
20,8	46	<b>FC450 R2</b>	9W-2452 4T-5452	<b>R450</b>
30,0	66	<b>FC500 R2</b>	4T-5502	<b>R500</b>
55,4	122	<b>FC550 R2</b>	6Y-3552	<b>R550</b>

Lmm	L	inch	ø	inch	Kg	Lb	Part#	Size
92	3,6	20,5	0,8	0,3	0,6		<b>FCR300HP R300</b>	
120	4,7	20,5	0,8	0,4	0,8		<b>FCR350HP R350</b>	
135	5,3	26,0	1,0	0,7	1,5		<b>FCR450HP R450</b>	
153	6,0	33,0	1,3	1,2	2,7		<b>FCR500HP R500</b>	
170	6,7	37,5	1,5	1,7	3,8		<b>FCR550HP R500</b>	

### R2ST

MEDIUM  
STAR



Kg	Lb	Part#	OEM	Size
14,3	31	<b>FC350 R2ST</b>	6Y-0352ST	<b>R350</b>
19,8	44	<b>FC450 R2ST</b>	9W2452ST	<b>R450</b>
32,7	72	<b>FC500 R2ST</b>	4T-5502ST	<b>R500</b>

### R2S

MEDIUM  
CENTERLINE



Kg	Lb	Part#	OEM	Size
36,3	80	<b>FC500 R2S</b>	4T-4502	<b>R500</b>
57,0	125	<b>FC550 R2S</b>	9W-4552	<b>R550</b>

### R3

LONG



Kg	Lb	Part#	OEM	Size
22,9	50	<b>FC450 R3</b>	114-0453	<b>R450</b>
37,9	83	<b>FC500 R3</b>	4T-5503 4T-4503	<b>R500</b>

### R3ST

LONG  
STAR



Kg	Lb	Part#	OEM	Size
36,6	81	<b>FC500 R3ST</b>	4T-5503 4T-4503	<b>R500</b>

### ARM

TUNGSTEN  
COATED  
RIPPER TEETH  
AVAILABLE  
ON DEMAND



DIRECT  
REPLACEMENT  
PARTS FOR

## ESCO

### R2 RIPPER MEDIUM



Kg	Lb	Part#	OEM	Size
4,1	9	<b>FE22 R2</b>	22-R10	<b>22</b>
6,2	14	<b>FE25 R2</b>	25-R12	<b>25</b>
14,532		<b>FE35 R2</b>	35-RH14A	<b>35</b>
			39-R17E	
26,057		<b>FE39 R2</b>	39-RH17E	<b>39</b>
			39-RH18A	

### R2S MEDIUM STAR



Kg	Lb	Part#	OEM	Size
14,2	31	<b>FE35 R2S</b>	35-R14	<b>35</b>

### RPT RIPPER PROTEC- TOR



Kg	Lb	↔↔	Part#	OEM	Size
44	96	90 3,5"	<b>FE39 RPT</b>	39RHSL	<b>39</b>

DIRECT  
REPLACEMENT  
PARTS FOR

## KOMATSU

### R2 RIPPER MEDIUM



Kg	Lb	Part#	OEM	Size
16,8	37	<b>FK155 R2</b>	175-78-31230 175-78-31232	<b>155</b>
21,0	46	<b>FK355 R2</b>	195-78-21331 195-78-21333	<b>355</b>
30,9	68	<b>FK375 R2</b>	195-78-71320 195-78-71330	<b>375</b>
38,2	84	<b>FK475 R2</b>	198-78-21420 198-78-21380	<b>475</b>







# DRP

DRP

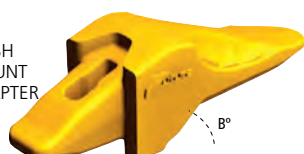
**L**  
LONG



Kg	Lb	Part#	OEM
1,4	3	<b>FC23 L</b>	4K-6936
1,9	4	<b>FC34 L</b>	4K-0034

**F**

FLUSH MOUNT ADAPTER



Kg	Lb	B°		Part#
3,5	8	25°	13-20	0,5" 0,8" <b>FC23 F</b>

**R**

EXCAV. ADAPTER



Kg	Lb	B°		Part#
2,7	6	25	13 20	0,5" 0,8" <b>FC23 R</b>

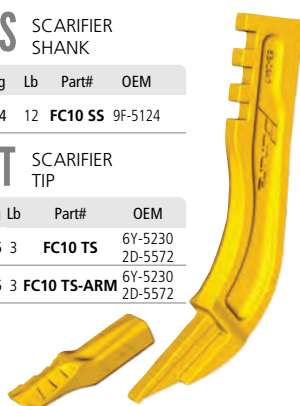
## CATERPILLAR MISC.

**SS** SCARIFIER SHANK

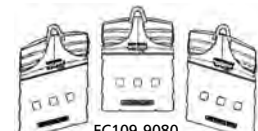
Kg	Lb	Part#	OEM
5,4	12	<b>FC10 SS</b>	9F-5124

**ST** SCARIFIER TIP

Kg	Lb	Part#	OEM
1,5	3	<b>FC10 TS</b>	6Y-5230 2D-5572
1,5	3	<b>FC10 TS-ARM</b>	6Y-5230 2D-5572



**FC109** LIP PROTECTOR



Kg	Lb		Part#	OEM
52	115		<b>FC109-9080</b>	109-9080 <b>988</b>
54	118	45 1,8"	<b>FC109-9081</b>	109-9081 <b>988F</b>
54	118		<b>FC109-9082</b>	109-9082 <b>988G</b>
155	341		<b>FC109-9030</b>	109-9030
155	341	100 3,9"	<b>FC109-9031</b>	109-9031 <b>994</b>
155	341		<b>FC109-9032</b>	109-9032

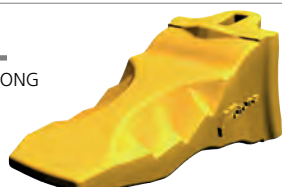


**FC6Y** MONOBLOCK TOOTH



Kg	Lb		Part#	OEM
3,6	8	19 0,7"	<b>FC6Y-6335</b>	6Y-6335 9W-1879

**L**  
LONG



Kg	Lb	Part#	OEM	Size
1,1	2	<b>FE18 L</b>	18TL	<b>18</b>

**P**

PENETRATION



Kg	Lb	Part#	OEM	Size
1,1	2	<b>FE18 P</b>	18VIP	<b>18</b>

**TVC**

VECTOR



Kg	Lb	Part#	OEM	Size
1,4	3	<b>FE18 TVC</b>	18WTL	<b>18</b>

## DIRECT REPLACEMENT PARTS FOR ESCO

**S**

STANDARD



Kg	Lb	Part#	OEM	Size
2,4	5	<b>FE25 S</b>	25S	<b>25</b>
2,9	6	<b>FE30 S</b>	30S	<b>30</b>
4,2	9	<b>FE35 S</b>	35S	<b>35</b>
6,9	15	<b>FE40 S</b>	40S	<b>40</b>

**R**

EXCAVATOR ADAPTER



Kg	Lb	B°		Part#	OEM	Size
1,6	4	28	20 0,8"	<b>FE18 R</b>	833-18	<b>18</b>
3,7	8	23	25 1,0"	<b>FE25 R</b>	855-25	<b>25</b>

**S**

STANDARD



Kg	Lb	Part#	OEM	Size
27,9	61	<b>FE66 S</b>	66-R, 66-FP, 66-LP	<b>66</b>
35,7	79	<b>FE76 S</b>	76-R, 76-FP, 76-LP	<b>76</b>

**R**

ROCK EXPLODER



Kg	Lb	Part#	OEM	Size
60,0	132	<b>FE86 R</b>	86-R	<b>86</b>

**S**

STANDARD



Kg	Lb	Part#	OEM	Size
5,1	11	<b>FK200 S</b>	205-70-19570	<b>200</b>
7,9	17	<b>FK300 S</b>	207-70-14151	<b>300</b>
11,6	26	<b>FK400 S</b>	208-70-14152	<b>400</b>

**TL**

TIGER LONG



Kg	Lb	Part#	OEM	Size
5,3	12	<b>FK200 TL</b>	20Y-70-K4060	<b>200</b>
7,7	17	<b>FK300 TL</b>	20Y-70-K4070	<b>300</b>
11,4	25	<b>FK400 TL</b>	208-70-K1340	<b>400</b>

**RPL**

ROCK PENETRATION LIGHT



Kg	Lb	Part#	OEM	Size
12,0	26	<b>FK600 RPL</b>	426-847-1110	<b>600</b>

## DIRECT REPLACEMENT PARTS FOR KOMATSU

# KOMATSU

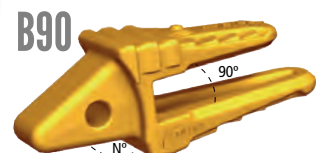
**I**

IMPACT



Kg	Lb	Part#	OEM	Size
5,6	12	<b>FK200 I</b>		<b>200</b>
8,6	19	<b>FK300 I</b>	20Y-70-K4070	<b>300</b>
12,0	26	<b>FK400 I</b>		<b>400</b>

**B90**



Kg	Lb	N°	Part#	OEM	Size
10,2	22	40	<b>FK200-B90</b>	20Y-939-1180	<b>200</b>
15,2	33	12	<b>FK300-B90</b>	207-939-3120	<b>300</b>

**RC**

ROCK CHISEL



Kg	Lb	Part#	OEM	Size
7,0	15	<b>FK200 RC</b>	205-70-19570	<b>200</b>
10,3	23	<b>FK300 RC</b>	207-70-14151	<b>300</b>
15,5	34	<b>FK400 RC</b>	208-70-14152	<b>400</b>
35,1	77	<b>FK750 RC</b>	208-70-14152 209-70-54720	<b>650 750</b>
54,8	121	<b>FK1100 RC</b>	209-70-54720 21N-72-14290	<b>1000 1100</b>

Other manufacturer's names, descriptions, pictures and part numbers are used for reference purposes only.

futura





# DRP

# DRP

## X156

STANDARD



X156

Kg	Lb	Part#	OEM	Size
0,9	2	FP156 X	X156	156

## F156

FLARE



X156

Kg	Lb	Part#	OEM	Size
1,5	3	FP156 F	X156 F	156

## T156

TIGER



X156

Kg	Lb	Part#	OEM	Size
0,8	2	FP156 T	T156	156

DIRECT REPLACEMENT PARTS FOR  
**HENSLEY PARABOLICS**

## WT156

TWIN TIGER



Kg	Lb	Part#	OEM	Size
1,2	3	FP156 WT	X156 WT	156

## R156

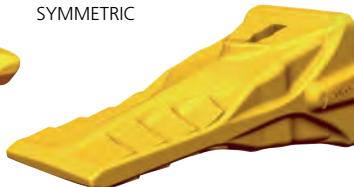
ADAPTER



Kg	Lb	N°	Part#	OEM	Size
1,9	4	15	150,6"	FP230X156 R	230X156
2,3	5	12	25 1,0"	FP550X156 R	550X156 156
2,3	5	15	20 0,8"	FP552X156 R	552X156

## SYL

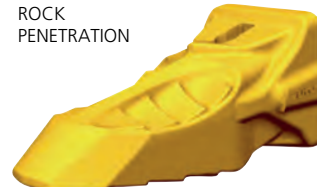
SYMMETRIC



Kg	Lb	Part#	OEM	Size
4,8	11	FP290 SYL	X290 SYL	290
7,4	16	FP330 SYL	X330 SYL	330

## RP2

ROCK PENETRATION



Kg	Lb	Part#	OEM	Size
22,6	50	FP450 RP2	X450RP	450
33,6	74	FP500 RP2	X500RP2	500

## X

STANDARD



Kg	Lb	Part#	OEM	Size
5,7	12	FP290 X	X290	290
4,0	9	FP310 X	X310	310
8,5	19	FP330 X	X330	330
11,8	26	FP370 X	X370	370
11,1	25	FP400 X	X400	400
16,2	36	FP410 X	X410	410
22,9	50	FP450 X	X450	450
21,5	47	FP475 X	X475	475
29,9	66	FP500 X	X500	500

## T

TIGER



Kg	Lb	Part#	OEM	Size
4,1	9	FP290 T	T290	290
6,1	13	FP330 T	T330	330
8,7	19	FP370 T	T370	370
8,1	18	FP400 T	T400	400
11,8	26	FP410 T	T410	410
16,5	36	FP450 T	T450	450
20,7	46	FP500 T	T500	500

## WT

TWIN TIGER



Kg	Lb	Part#	OEM	Size
5,3	12	FP290 WT	X290 WT	290
5,5	12	FP310 WT	X310 WT	310
7,6	17	FP330 WT	X330 WT	330
10,6	23	FP370 WT	X370 WT	370
10,2	22	FP400 WT	X400 WT	400
14,9	33	FP410 WT	X410 WT	410
20,3	45	FP450 WT	X450 WT	450
19,3	42	FP475 WT	X475 WT	475
24,6	54	FP500 WT	X500 WT	500

## R

ADAPTER



Kg	Lb	N°	Part#	OEM	Size
6,2	14	15	30 1,2"	FP109X220 R	109X220 220
10,3	23	12	30 1,2"	FP127X290 R	127X290 290
11,0	24	12	38 1,5"	FP158X290 R	158X290
16,5	36	15	38 1,5"	FP158X330 R	158X330 330
18,2	40	12	45 1,8"	FP937X370 R	937X370 370
17,6	39	12	50 2,0"	FP940X370 R	940X370
21,8	48	12	50 2,0"	FP940X410 R	940X410 410

## L

LONG



Kg	Lb	Part#	OEM	Size
1,2	3	FD230 L	TF23 L	23

## WTL

TWIN TIGER



Kg	Lb	Part#	OEM	Size
1,6	4	FD230 WTL	T230 WT	23

## TL

TIGER LONG



Kg	Lb	Part#	OEM	Size
1,3	3	FD230 TL	TT230	23

DIRECT REPLACEMENT PARTS FOR  
**JOHN DEERE**

## RP

ROCK PENETRATION



Kg	Lb	Part#	OEM	Size
12,3	27	FD33 RP	TF33 L	33

## RPL

ROCK PENETRATION



Kg	Lb	Part#	OEM	Size
8,5	19	FD33 RPL	TF33 L	33

## T55

END EDGE PROTECTOR

Kg	Lb	Part#	OEM	Machine
39	87	20 0,8"	T196455	T196455 844 J

## T26

CENTRAL EDGE PROTECTOR

Kg	Lb	Part#	OEM	Machine
130	286	20 0,8"	T198126	T198126 844 J



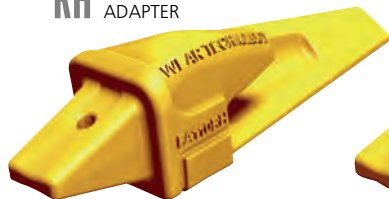




# drp

drp

**RH** RIGHT HAND ADAPTER



Kg	Lb	Part#	OEM	Size
3,2	7	20	0,8"	<b>FA110 RH</b> 110RH <b>100</b>
5,8	13	38	1,5"	<b>FA310 RH</b> 310RH <b>300</b>
12,8	28	50	2,0"	<b>FA410 RH</b> 410RH <b>400</b>

**C** CENTRAL ADAPTER



Kg	Lb	Part#	OEM	Size
4,7	10	20	0,8"	<b>FA110</b> 110 <b>100</b>
19,5	43	38	1,5"	<b>FA310</b> 310 <b>300</b>
21,1	46	50	2,0"	<b>FA410</b> 410 <b>400</b>

**LH** LEFT HAND ADAPTER



Kg	Lb	Part#	OEM	Size
3,2	7	20	0,8"	<b>FA110 LH</b> 110LH <b>100</b>
5,8	13	38	1,5"	<b>FA310 LH</b> 310LH <b>300</b>
12,8	28	50	2,0"	<b>FA410 LH</b> 410LH <b>400</b>

DIRECT REPLACEMENT PARTS FOR  
**ADCO**

**RH** RIGHT HAND TOOTH



Kg	Lb	Part#	OEM	Size
1,5	3	<b>FA100 RH</b>	100RH	<b>100</b>
4,2	9	<b>FA300 RH</b>	300RH	<b>300</b>
10,4	23	<b>FA400 RH</b>	400RH	<b>400</b>

**C** CENTRAL TOOTH



Kg	Lb	Part#	OEM	Size
1,5	3	<b>FA100 C</b>	100C	<b>100</b>
5,0	11	<b>FA300 C</b>	300C	<b>300</b>
9,5	21	<b>FA400 C</b>	400C	<b>400</b>

**LH** LEFT HAND TOOTH



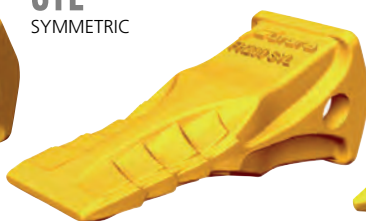
Kg	Lb	Part#	OEM	Size
1,5	3	<b>FA100 LH</b>	100LH	<b>100</b>
4,2	9	<b>FA300 LH</b>	300LH	<b>300</b>
10,4	23	<b>FA400 LH</b>	400LH	<b>400</b>

**L** LONG



Kg	Lb	Part#	OEM	Size
1,2	3	<b>FH230 L</b>	23-HXL, 230-S	<b>23</b>

**SYL** SYMMETRIC



Kg	Lb	Part#	OEM	Size
1,3	3	<b>FH230 SYL</b>	23-HXL, 230-S	<b>23</b>

**TL** TIGER LONG



Kg	Lb	Part#	OEM	Size
1,3	3	<b>FH230 TL</b>	23-TL	<b>23</b>

DIRECT REPLACEMENT PARTS FOR  
**H&L**

**WTS** TIGER SHARP



Kg	Lb	Part#	OEM	Size
1,4	3	<b>FH230 WTS</b>	23-WTL	<b>23</b>

**WTL** TWIN TIGER



Kg	Lb	Part#	OEM	Size
1,7	4	<b>FH230 WTL</b>	23-WTL	<b>23</b>

KEY TO PART NUMBERS

**F H 2 3 0 T L**

BRAND TYPE SIZE VERSION TIGER LONG

**230** ADAPTER



Kg	Lb	Part#	OEM	Size
1,9	4	25	1,0"	<b>FH230</b> 2740-23 <b>23</b>

**230 R** ADAPTER



Kg	Lb	B°	Part#	OEM	Size
2,2	5	21	25	1,0"	<b>FH230 R</b> 834-23 <b>23</b>



Other manufacturer's names, descriptions, pictures and part numbers are used for reference purposes only.

futura



