

Coronary Arteries Disease (CAD)

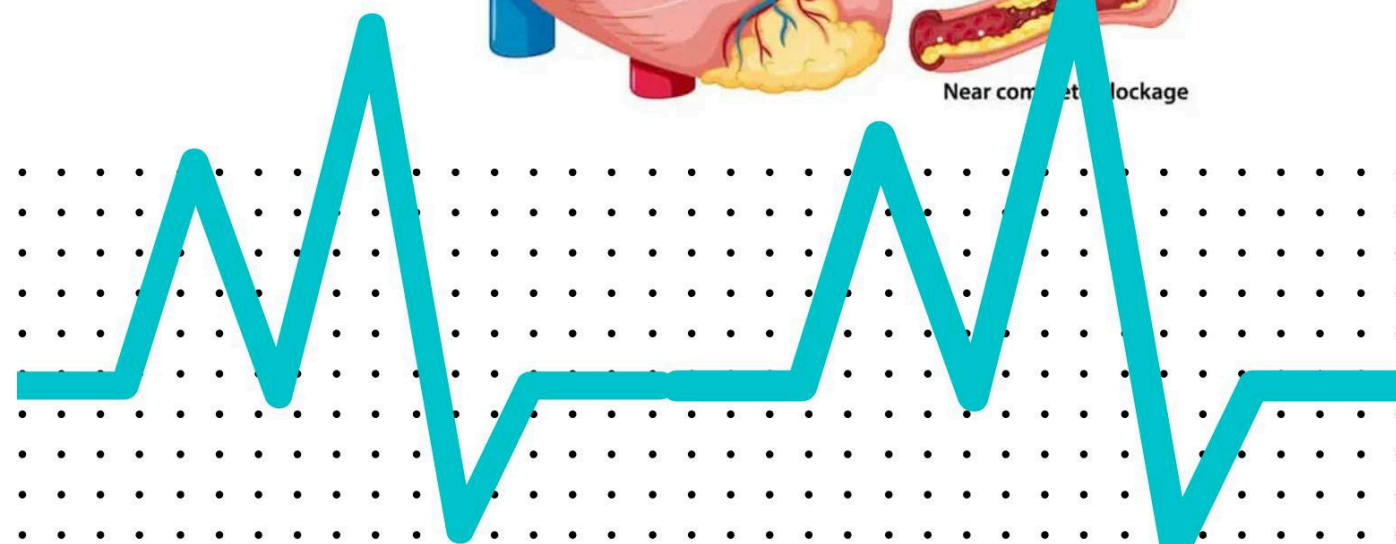
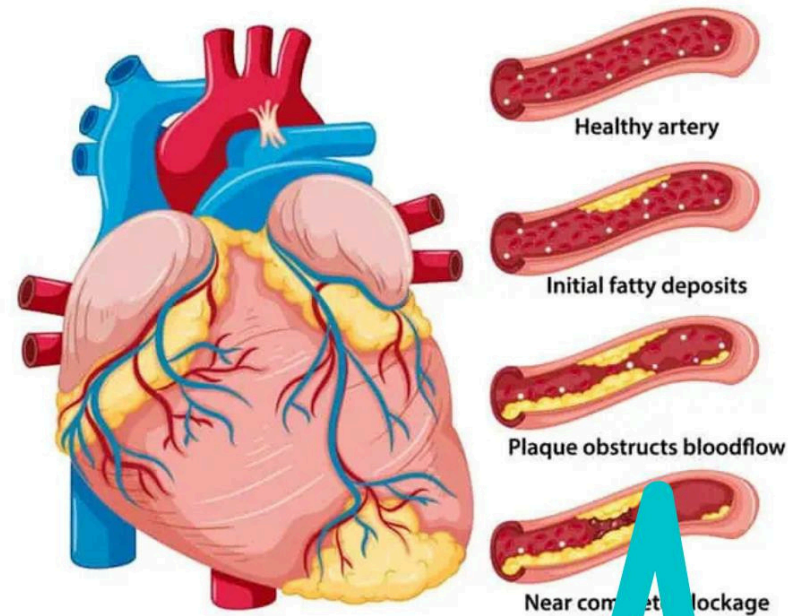


Coronary artery disease (CAD) is the most common type of heart disease in the United States. It is sometimes called coronary heart disease or ischemic heart disease.

CAD is caused by plaque buildup in the walls of the arteries that supply blood to the heart (called coronary arteries) and other parts of the body.

Plaque is made up of deposits of cholesterol and other substances in the artery. Plaque buildup causes the inside of the arteries to narrow over time, which can partially or totally block the blood flow. This process is called atherosclerosis.

CORONARY ARTERY DISEASE



CORONARY ARTERY BYPASS GRAFTS



Coronary Artery Bypass Graft (CABG) uses healthy blood vessels from another part of the body and connects them to blood vessels above and below the blocked artery. This creates a new route for blood to flow that bypasses the narrowed or blocked coronary arteries. The blood vessels are usually arteries from the arm or chest, or veins from the legs.

CORONARY ARTERY BYPASS SURGERY

