

The Yankee Jack Russell Terrier Network  
proudly presents...



## Yankee I & II Trials May 16 & 17, 2020

Hebron Lions Fairgrounds  
Route 85 / 347 Gilead Street  
Hebron, Connecticut, 06248



[www.hebronharvestfair.org](http://www.hebronharvestfair.org)



### **Judges:**

Conformation Saturday: Nancy Breakstone

Conformation Sunday: Lynn Clough

Racing: Doug Loranger

GTG/SE: Doug Loranger & Jenn Carr

Barn Hunt: Sue Farmer

Trailing and Locating: Nate Turner

Lure Coursing: Scott & Mary Anne Sherry

Agility: Sat - Rhonda Hermance, Sunday - Lisa Antonucci

Ball Toss: Renee Gamba



### **Chaired by Trial Committee:**

Denise DeCosta, Laura Harakaly, Joanne Guilmain, Pat Marchetti & Robert Burns

Trial Contact: Denise DeCosta 508-353-8810 [seadogjrt@hotmail.com](mailto:seadogjrt@hotmail.com)

Entries: Pat Marchetti 401-647-5851 [YJRTN@outlook.com](mailto:YJRTN@outlook.com)

**Exhibitors and owners of terriers must be current JRTCA members.  
These trials are sanctioned by the JRTCA.**



## **Directions to the Hebron Fairgrounds**

*Please enter the fairgrounds at Gate A only!*

**From South** on I-91 or West on I-84: Take I 91 to CT Route 3 (exit 25) east to CT Route 2 toward Glastonbury. From CT Route 2, take exit #8 (CT Route 94). At end of ramp, go LEFT (east) on CT Route 94 for 9.1 miles. Stay straight and CT 94 turns into CT 85. Continue for 3.1 miles to the Hebron Fairgrounds on the right.

**From East** on I-84: Take Exit 70, CT 32 south for 14.4 miles to US route 6 west for 2.4 miles. Bear left as US 6 becomes CT 66. Take CT 66 for 6.4 miles to CT 85. Turn right (north) on CT 85 for 1.7 miles. Hebron Fairgrounds are on the left.

**From Southern New England:** Take US 6 east to CT 66. Take CT 66 east for 6.4 miles to CT 85. Turn right (north) on CT 85 for 1.7 miles. Hebron Fairgrounds are on the left.



## **Trial Schedule: Saturday and Sunday**

**Entry Desk opens at 7:30 AM**

**Racing begins *PROMPTLY* at 8:00 AM**

**Conformation exhibitors should be on the grounds by 11:00 a.m. as  
Conformation will begin shortly after racing is complete!**

**Lure Coursing: Saturday 11:30 - 4:30**

**Sunday 11:30 - 3:30**

**Ball Retrieval is from 11:00 a.m. – 1:00 p.m.**

**The following events begin after racing is finished:  
GTG, SE, Trailing & Locating, Barn Hunt, & Agility**

**Raffle Following Conformation on Saturday**

**No one is allowed to be on the Fair Grounds before 9:00 a.m. on**

**Friday, May 15, 2020.**

**Please do not arrive before Friday.**

**Thank You!**

**Places to stay - Please make your reservations early - hotels book quickly!**

**\*\*Note: Yankee has rooms blocked at the Comfort Inn Until 5/1/2020. Rate: \$89.00/nite - No pet fee.**

**COMFORT INN** (formerly the Best Western Inn)

1330 Silas Deane Hwy. Wethersfield CT 860 563 2311

I-91 to exit 24, north on Silas Deane Hwy. Hotel is 3/4 mile on right.

**HOLIDAY INN EXPRESS:** 1760 Silas Deane Hwy Rocky Hill, CT 860-529-3341

From the South: I-91 south to Exit 24 Left off ramp go about 1/4 mile. Hotel is on the left.

From the North: I-91 South to Exit 24. Right off ramp go about 1/4 mile. Hotel is on the left.

**RAMADA INN (used to be HOLIDAY INN EAST)**

363 Roberts Street East Hartford CT 860-528-9611

I-84 to exit 58 - Roberts Street.

**CLARION SUITES**

191 Spencer Street Manchester CT 860- 643-5811

I-84 to exit 59 - Spencer St. Left at end of exit then left at 3rd traffic light. Hotel is behind Friendly's. I-91 North or South to Route 291 to I-394 and then follow above directions.

**Facilities Available**

RV / tent camping is allowed on the grounds. \$25.00 per day.

Bathroom facilities, showers, and water are available on the grounds.

**General Notes**

Ribbons awarded to 6th place. Trophies awarded for every class.

All dogs MUST be leashed or crated except when competition requires

off leash work. Please be careful when using flexi-leashes on the grounds!

**Please pick up your trash, clean up after your dogs, and leave the grounds as clean as you found them.**

---

### **Yankee Raffle**

Yankee will be presenting the raffle 'Chinese-style'.

Raffle prizes will be set up on tables with a 'ticket bag' attached to each prize.

Drop your tickets into the container attached to the item (s) you wish to win!

Raffle begins promptly after conformation on Saturday so buy your tickets early!



**3 free raffle tickets with each raffle item donated!**

**\*At this time, we DO NOT have a food vendor. Please plan on bringing your own lunch.**

**There is a Subway, a pizza place and a sandwich shop nearby.**

**Saturday Night Dinner ~ Please join us!**

**Dinner will be done by a caterer this year.**

**Lasagna, salad, rolls, dessert, coffee and soft drinks.**

**\$18.00 per person .... please put your reservation on your entry form!**

## **Perpetual Trophies**

**Woods End Perpetual Trophy** - awarded to the Under Racing Champion on Saturday.

*Donated by The Loranger's in honor of Woods End Calico (Cali).*

**Denise DeCosta Friendship Perpetual Trophy** - Puppy Conformation Champion on Saturday

**Little Eden Thriller Perpetual Trophy** - awarded to the Best Working Bitch on Saturday.

*Donated by RavenWolf Jack Russell Terriers.*

**Sunny Hill Working Terrier Trophy** - awarded to the Working Terrier Champion on Saturday.

*Donated by Alayne Evans.*

**June Linstrum Perpetual Plaque** - awarded to the High Score Agility Champion on Saturday.

**Janet Mumma Perpetual Trophy** - awarded to the Under Veteran Racing Champion on Sunday.

**Jeff Griffies Perpetual Trophy** - awarded to the Under Racing Champion on Sunday

**Bob Franklin Perpetual Plaque** - awarded to the Over Racing Champion on Sunday.

*Donated by Ocean State Jacks.*

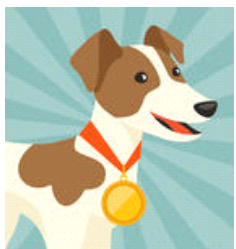
**JRT Research Foundation Perpetual Trophy** - awarded to the Best Open Terrier on Sunday.

**SeaDog Schooner Perpetual Trophy** - Awarded to winner of 3 Generations on Sunday

*Donated by Denise DeCosta - In Memory of Seadog Schooner*

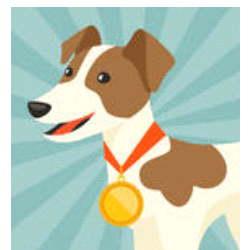
**Quail Crossing Perpetual Trophy** - awarded terrier who excels both days in Under Super Earth

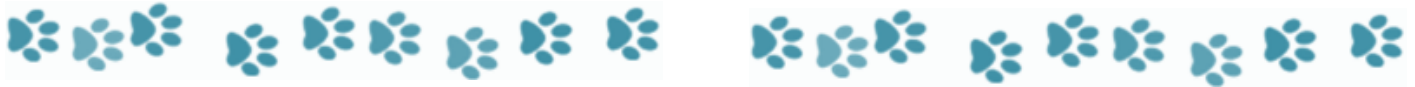
*Cert Classes. Donated by Jim & Kris Tracy.*



**Yankee Trial Volunteers please go to the front of the line for all events!**

We appreciate our volunteers who give up their time to keep





**To Keep Our Venues Moving Efficiently:**

For those of you with multiple terriers entered, please allow the people in line behind you to run in between your dogs. This will keep the line moving smoothly.

Thank you!

**Back for 2020!**

Yankee will be adding Outlaw Classes to some of our events again this year. These classes will be open to any handler and their canine companion who wish to participate in the event.

Outlaws classes added in Agility, Barn Hunt, Ball Toss and Lure Coursing

**NON-SANCTIONED - Not eligible for Championships or High Point Awards**

Ribbons awarded for 1st - 6th place

**Beyond Geriatrics Division: \$30 per dog / per day - Non Sanctioned**  
**Let those Old Dogs PLAY!**

- Class: 11 Geriatric Flat Racing
- Class: 30 Geriatric Low Hurdles Racing
- Class: 99 Geriatric Conformation
- Class: 113 Geriatric GTG
- Class: 125 Geriatric Super Earth
- Class: 152 Geriatric Trailing and Locating
- Class: 165 Geriatric Lure Coursing
- Class: 175 Geriatric Ball Toss
- Class: 184 Geriatric Barn Hunt

**NOT Eligible for any High Point Awards**

## Class List

### **Division A - Racing**

All terriers must be muzzled with closed-end muzzles for racing (no figure eight muzzles allowed). Handlers must supply muzzles. Puppy classes may be combined based on number of entries.

**To be eligible to run in the Championship race, the terrier MUST have entered and FINISHED in both the flat and steeplechase classes.** A terrier that is not entered in both classes or has not finished in both classes is not eligible to run in the Championship race. In this case, the 2nd place terrier becomes eligible to run in the Championship race, assuming it was entered and finished in both classes. No Cross Entering between Adult, Veteran, and Senior classes.

#### **Section 1: Flat Races**

- Class 1: Dog & Bitch Pups: 4-6 month - **Non Sanctioned**
- Class 2: Pups: 6 up to 9 months, up to 12½"
- Class 3: Pups: 6 up to 9 months, over 12½" up to 15"
- Class 4: Pups: 9 up to 12 months, up to 12½"
- Class 5: Pups: 9 up to 12 months, over 12½" up to 15"
- Class 6: Shorties - Dogs/Bitches under 10½" - **Non Sanctioned**
- Class 7: Senior Dogs 9 years and older, 10" up to 12½"
- Class 8: Senior Dogs 9 years and older, over 12½" up to 15"
- Class 9: Senior Bitches 9 years and older, 10" up to 12½"
- Class 10: Senior Bitches 9 years and older, over 12½" up to 15"
- Class 11: Beyond Geriatrics, over 12 yrs - **Non Sanctioned**
- Class 12: Dogs: 1 year and older, 10" up to 12½"
- Class 13: Dogs: 1 year and older, over 12½" up to 15"
- Class 14: Bitches: 1 year and older, 10" up to 12½"
- Class 15: Bitches: 1 year and older, over 12½" up to 15"
- Class 16: Veteran Dogs, 6 years and older, 10" up to 12½"
- Class 17: Veteran Dogs, 6 years and older, over 12½" up to 15"
- Class 18: Veteran Bitches, 6 years and older, 10" up to 12½"
- Class 19: Veteran Bitches, 6 years and older, over 12½" up to 15"

**Racing Ribbons 1<sup>st</sup> – 6<sup>th</sup> place will be awarded after every finals race!**

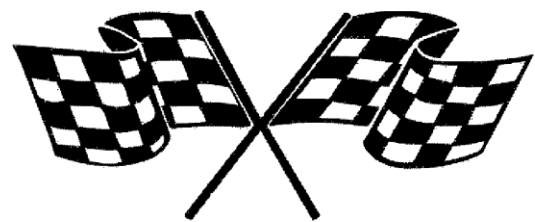
**Please pick up your ribbons as you pick up your dog in the catch pen!**

**Champion/Reserve ribbons will be announced under the tent prior to Conformation.**

#### **Section 2: Steeplechase (Hurdles) Races**

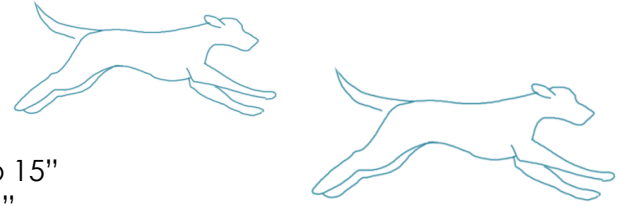
**Puppies, Shorties, Seniors, & Beyond Geriatrics over low hurdles up to 8", Adults over high hurdles 8 - 16".**

- Class 20: Dog & Bitch Pups: 4-6 month - **Non Sanctioned**
- Class 21: Pups: 6 up to 9 months, up to 12½"
- Class 22: Pups: 6 up to 9 months, over 12½" up to 15"
- Class 23: Pups: 9 up to 12 months, up to 12½"
- Class 24: Pups: 9 up to 12 months, over 12½" up to 15"
- Class 25: Shorties - Dogs/Bitches under 10½" - **Non Sanctioned**
- Class 26: Senior Dogs 9 years and older, 10" up to 12½"
- Class 27: Senior Dogs 9 years and older, over 12½" up to 15"
- Class 28: Senior Bitches 9 years and older, 10" up to 12½"
- Class 29: Senior Bitches 9 years and older, over 12½" up to 15"
- Class 30: Beyond Geriatrics - Over 12 years of age - **Non Sanctioned**
- Class 31: Puppy Championship 10" up to 12½" - 1st place winners of classes 2, 4, 21, & 23**
- Class 32: Puppy Championship Over 12½" up to 15" - 1st place winners of classes 3, 5, 22, & 24**
- Class 33: Senior Championship 10" up to 12½" - 1st place winners of classes 7, 9, 26, & 28**
- Class 34: Senior Championship Over 12½" up to 15" - 1st place winners of classes 8, 10, 27 & 29**





- Class 35: Dogs: 1 year and older, 10" up to 12½"
- Class 36: Dogs: 1 year and older, over 12½" up to 15"
- Class 37: Bitches: 1 year and older, 10" up to 12½"
- Class 38: Bitches: 1 year and older, over 12½" up to 15"
- Class 39: Veteran Dogs, 6 years and older, 10" up to 12½"
- Class 40: Veteran Dogs, 6 years and older, over 12½" up to 15"
- Class 41: Veteran Bitches, 6 years and older, 10" up to 12½"
- Class 42: Veteran Bitches, 6 years and older, over 12½" up to 15"



### **Section 3: Championship Run-Offs**

**No entry fee required. Adult and Veteran run-offs immediately following Class 42.**

- Class 43: **Adult Championship - 10" up to 12½" - 1st place winners of classes 12, 14, 35, & 37**
- Class 44: **Adult Championship - Over 12½" up to 15" - 1st place winners of classes 13, 15, 36, & 38**
- Class 45: **Veteran Championship - 10" up to 12½" - 1st place winners of classes 16, 18, 39, & 41**
- Class 46: **Veteran Championship - Over 12½" up to 15" - 1st place winners of classes 17, 19, 40 & 42**

### **Division B - Conformation**

**Intact terriers** may cross enter into Miscellaneous Conformation Classes



#### **Section 1: 4 - 6 Month Puppy Conformation**

- Class 47: 3-4 Month Puppy – **(Non-Sanctioned). FREE!** Enter your puppy on the entry form.
- Class 48: Dog Pups - 4 up to 6 months - smooth
- Class 49: Dog Pups - 4 up to 6 months - rough/broken
- Class 50: Bitch Pups - 4 up to 6 months - smooth
- Class 51: Bitch Pups - 4 up to 6 months - rough/broken
- Class 52: **Best 4 - 6 month Puppy & Reserve** - 1st and 2nd place winners in classes 48 through 51

#### **Section 2: Breeders**

- Class 53: Stud Dog and Get - Sire with 2 - 3 offspring. Judged on Breed Standard and consistency of type. Sire must be an intact male; offspring may be intact or spayed/neutered.
- Class 54: Brood Bitch and Produce – Dam with 2 - 3 offspring. Judged on Breed Standard and consistency of type. Bitch must be intact; offspring may be intact or spayed/neutered.
- Class 55: **Best Family & Reserve** - 1st and 2nd place winners in classes 53 & 54
- Class 56: Generation Class - A minimum of three successive generations of breeding; the second and successive generations must be bred by the exhibitor.

#### **Section 3: Non-Sanctioned**

- Class 57: YJRTN Member Owned Dog – Owner/Handler must be a current member of YJRTN, terrier must be an adult.
- Class 58: YJRTN Member Owned Bitch – Owner/Handler must be a current member of YJRTN, terrier must be an adult.
- Class 59: **Best YJRTN Member Owned Terrier** - 1st & 2nd place winners of class 57 & 58

#### **Section 4: 6 - 12 Month Puppy Conformation**

- Class 60: Dog Pups, 6 up to 9 months, smooth
- Class 61: Dog Pups, 6 up to 9 months, rough/broken
- Class 62: Dog Pups, 9 up to 12 months, smooth
- Class 63: Dog Pups, 9 up to 12 months, rough/broken
- Class 64: **BEST DOG PUPPY & RESERVE** - 1st and 2nd place winners in classes 60 through 63
- Class 65: Bitch Pups, 6 up to 9 months, smooth



- Class 66: Bitch Pups, 6 up to 9 months, rough/broken
- Class 67: Bitch Pups, 9 up to 12 months, smooth
- Class 68: Bitch Pups, 9 up to 12 months, rough/broken
- Class 69: **BEST BITCH PUPPY & RESERVE** - 1st and 2nd place winners in classes 65 through 68
- Class 70: **PUPPY CONFORMATION CHAMPION & RESERVE** 1st and 2nd place in classes 64 & 69

### Section 5: Working Terrier Conformation

**Any JRTCA registered terrier owned by a JRTCA member which holds a JRTCA Natural Hunting Certificate. Terriers entered may not cross enter within the Working Section or into the Open Section.**

- Class 71: Bronze Medallion Dog – Dog must have earned the JRTCA Bronze Medallion.
- Class 72: Bred by Exhibitor Working Terrier Dog – Open to any working dog owned & bred by the exhibitor under whose kennel prefix the dog is registered; must be handled by the breeder or a member of the breeder's immediate family.
- Class 73: Working Terrier Dog, 10 up to 12½"
- Class 74: Working Terrier Dog, over 12½ up to 15"
- Class 75: Veteran Working Terrier Dog – Working dogs 6 years of age and older.
- Class 76: **BEST WORKING TERRIER DOG & RESERVE.** 1st and 2nd place in classes 71 through 75
- Class 77: Bronze Medallion Bitch – Bitch must have earned the JRTCA Bronze Medallion.
- Class 78: Bred by Exhibitor Working Terrier Bitch - Open to any working bitch owned & bred by the exhibitor under whose kennel prefix the terrier is registered; must be handled by the breeder or a member of the breeder's immediate family.
- Class 79: Working Terrier Bitch, 10 up to 12½"
- Class 80: Working Terrier Bitch, over 12½ up to 15"
- Class 81: Veteran Working Terrier Bitch - Working bitches 6 years of age and older.
- Class 82: **BEST WORKING TERRIER BITCH & RESERVE.** 1st and 2nd place in classes 77 through 81
- Class 83: **WORKING TERRIER CHAMPION & RESERVE.** 1st and 2nd place in classes 76 & 82

### Section 6: Open Adult Conformation

**Terriers entered may not cross enter within the Open Section or into the Working Section.**

- Class 84: Bred by Exhibitor Dog – Any dog owned and bred by the exhibitor; must be handled by the breeder or a member of the breeder's immediate family.
- Class 85: Dogs, 1 year and older 10" up to 12½" - smooth
- Class 86: Dogs, 1 year and older 10" up to 12½" - rough/broken
- Class 87: Dogs, 1 year and older over 12½" up to 15" - smooth
- Class 88: Dogs, 1 year and older over 12½" up to 15" - rough/broken
- Class 89: **BEST OPEN DOG & RESERVE** - 1st and 2nd place winners of classes 84 through 88
- Class 90: Bred by Exhibitor Bitch – Any bitch owned and bred by the exhibitor; must be handled by the breeder or a member of the breeder's immediate family.
- Class 91: Bitches, 1 year and older 10" up to 12½" - smooth
- Class 92: Bitches, 1 year and older 10" up to 12½" - rough/broken
- Class 93: Bitches, 1 year and older over 12½" up to 15" - smooth
- Class 94: Bitches, 1 year and older over 12½" up to 15" - rough/broken
- Class 95: **BEST OPEN BITCH & RESERVE** - 1st and 2nd place winners of classes 90 through 94
- Class 96: **BEST OPEN TERRIER & RESERVE**- 1st and 2nd place winners of classes 89 & 95



### Section 7: Miscellaneous

**Open to any adult terrier including those spayed and neutered.**

- Class 97: Companion Class - Who cares about looks or gender? Open to all adult terriers!  
**(Non - Sanctioned)**



- Class 98: Pairs - Any two terriers judged on matching appearance. Terriers do not have to be owned / handled by the same person. Judged on resemblance to each other and adherence to the JRTCA breed standard.
- Class 99: Beyond Geriatrics - Terriers over 12 yrs. old **(Non-Sanctioned)**
- Class 100: Spay & Neutered Terriers - Adult spayed or neutered terriers, judged on adherence to the JRTCA breed standard.
- Class 101: Veteran Dog - Any dog six years and older. Judged on Breed Standard and the dog's condition.
- Class 102: Veteran Bitch - Any bitch six years and older. Judged on Breed Standard and the bitch's condition.
- Class 103: **Best Veteran** - 1st & 2nd place winners of classes 101 & 102
- Class 104: Red Fox Suitability - The terrier the judge would most like to take hunting to red fox.
- Class 105: Groundhog Suitability - The terrier the judge would most like to take hunting to groundhog.
- Class 106: Raccoon Suitability - The terrier the judge would most like to take hunting to raccoon.



### To Keep GTG Moving Efficiently:

For those of you with multiple terriers entered, please allow the people in line behind you to run in between your dogs. This will keep the line moving smoothly. Thank you!

## **Division C - Go To Ground**

### **Section 1:**

- Class 107: Pre-Novice Puppy - Open to Jack Russell puppies 4 up to 6 months. Entry does not affect the puppy's eligibility to enter the Novice Class after 6 months of age. (One minute to reach quarry; may leave earth and re - enter until quarry is reached; mark quarry for 15 seconds without a break in work and without leaving quarry.)
- Class 108: Novice Puppy - Open to Jack Russells 6 up to 12 months which have not scored 100% in this class at a previous JRTCA trial. Entries earning a score of 100% at this trial may, upon payment of the entry fee, enter the Open Puppy Class at this trial. (One minute to reach quarry; may leave earth and re-enter several times until quarry is reached; when quarry is reached must work quarry continuously for a full 30 seconds without a break in work and without leaving the quarry; may switch from one type of work to another (baying to concentrated stare or digging to baying.)
- Class 109: Open Puppy - Open to Jack Russell's 6 up to 12 months which have scored 100% in a Novice Go-To-Ground class at this or a previous JRTCA trial. Not open to any puppies which have previously achieved 100% in this class. Puppies earning a score of 100% at this trial may, upon payment of the entry fee, enter the Puppy Championship GTG class at this trial. (30 seconds to reach quarry; may leave earth once and re-enter before

- quarry is reached; must work quarry continuously for one full minute without a break in work and without leaving quarry; may switch from one type of work to another.)
- Class 110: **Puppy Championship** - Open to Jack Russell's, 6 up to 12 months which have earned 100% in an Open Go-To-Ground class at this or a previous JRTCA trial. A copy of a 100% Open score sheet shall be submitted with pre-entry or be shown to the Den Steward at the time of the class. First and second place winners will be Puppy Go-To-Ground Champion and Reserve. (30 seconds to reach quarry; may leave earth once and re-enter before the quarry is reached; when quarry is reached must work quarry for one full minute without a break in work and without leaving quarry; may switch from one type of work to another.)
- Class 111: Novice Adult - Open to Jack Russell's one year of age or older which have not scored 100% in this class at a previous JRTCA trial. Entries earning a score of 100% at this trial may, upon payment of the entry fee, enter the Open class at this trial. (One minute to reach quarry; may leave earth and re-enter several times until quarry is reached; must work quarry continuously for a full 30 seconds without a break in work and without leaving the quarry; may switch from one type of work to another (examples baying to concentrated stare or digging to baying.)
- Class 112: Open Adult - Open to Jack Russell's one year or older which have scored 100% in a Novice Go-To-Ground class at this or a previous JRTCA trial. (30 seconds to reach quarry; may leave earth once and re-enter before the quarry is reached; must work quarry continuously for one full minute without a break in work and without leaving quarry; may switch from one type of work to another.)
- Class 113: Beyond Geriatrics GTG - Terriers 12 yrs and older - **Non Sanctioned**

**Certificate Classes:** Any adult Jack Russell, which holds a JRTCA Trial Certificate. A copy of the certificate must be submitted with pre-entry or be shown to the Den Steward at the time of the class. First and second place winners will be Go-To-Ground Champion and Reserve. (30 seconds to reach quarry; may not leave earth; work quarry for one full minute without a break in work and without leaving quarry.)

- Class 114: **Adult Championship Certificate - 10 up to 12½"**  
Class 115: **Adult Championship Certificate - Over 12½ up to 15"**  
Class 116: **Veteran Championship Certificate - 10 up to 12½"**  
Class 117: **Veteran Championship Certificate - Over 12½ up to 15"**  
Class 118: **Senior Championship Certificate - 10 up to 12½"**  
Class 119: **Senior Championship Certificate - Over 12½ up to 15"**

### [To Keep Super Earth Moving Efficiently:](#)

For those of you with multiple terriers entered, please allow the people in line behind you to run in between your dogs. This will keep the line moving smoothly. Thank you!

**Division D - Super Earth** A challenging GTG course with a series of false entrances and/or false tunnels and dens. Open to any Jack Russell Terrier, 6 months and older. 30 seconds per 30 feet of tunnel to reach quarry; may leave and re-enter earth several times until the quarry is reached then must work quarry for one full minute without a break in work and without leaving quarry. May switch from one type of work to another without penalty.

- Class 120: 6 up to 12 month Puppy Super Earth
- Class 121: 10 up to 12½" Super Earth - Open to terriers one year and older.
- Class 122: Over 12½ up to 15" Super Earth - Open to terriers one year and older.
- Class 123: 10 up to 12½" Veteran Super Earth - Open to terriers six years and older.
- Class 124: Over 12½ up to 15" Veteran Super Earth - Open to terriers six years and older.
- Class 125: Beyond Geriatrics - Terriers 12 yrs and older - **Non Sanctioned.**

**Certificate Classes:** Open to Jack Russell Terriers, one year and older, which hold a JRTCA Super Earth Trial Certificate. A copy of the certificate must be submitted with pre-entry or be shown to the Den Steward at the time of the class. First and Second Place winners will be Adult Super Earth Champion and Reserve.

- Class 126: **Adult Championship Certificate Super Earth - 10" up to 12½"**
- Class 127: **Adult Championship Certificate Super Earth - Over 12½ up to 15"**
- Class 128: **Veteran Championship Certificate Super Earth - 10" up to 12½"**
- Class 129: **Veteran Championship Certificate Super Earth - Over 12½ up to 15"**
- Class 130: **Senior Championship Certificate Super Earth - 10" up to 12½"**
- Class 131: **Senior Championship Certificate Super Earth - Over 12½ up to 15"**

## **Division E - Youth \$8/class**

**Classes 135 & 136 to be held immediately following completion of racing before other conformation classes.**

**Note:** Dog used must compete in its regular GTG class prior to Youth GTG class if entered in Open or Championship GTG class.

- Class 132: Child Handler - Any youth aged 5 thru 9, handling a Jack Russell Terrier, six months or older. An introductory experience in handling and learning about the JRT. Judged on the ability to present the dog and beginning knowledge of the JRT. Quality of the dog NOT considered.
- Class 133: Youth Handler - Open to any youth aged 10 thru 16, handling a Jack Russell Terrier, six months or older. An introductory experience in handling and learning about the JRT. Judged on the ability to present the dog and beginning knowledge of the JRT. Quality of the dog NOT considered.
- Class 134: Youth GTG - Open to any youth aged 10 thru 16, handling a Jack Russell Terrier. Judged on the youth's ability to present his/her dog and knowledge of GTG. To be run through the 10 foot Novice liner; time not considered.
- Class 135: Youth Off-Lead / On-Lead Agility - Open to any youth aged 10 thru 16, handling a Jack Russell Terrier one year or older. May choose to participate off-or-on lead. . To be run over the Novice Agility course. Time not to be considered. Judged on the youth's ability to handle his/her terrier and knowledge of agility.
- Class 136: **Youth Handler High Point and Reserve** - Awarded to the highest scoring youth and runner up in Classes 133, 134 and 135. The points are awarded as follows: 1st = 8 points, 2nd = 6 points, 3rd = 5 points, 4th = 4 points, 5th = 3 points, 6th = 2 points and participation = 1 point. Exhibitors must compete in a minimum of Youth Handling and Youth GTG to qualify for the Youth High Score and Reserve. A tie will be broken with the final decision made by a Conformation Judge other than the Judge of the day. The tie-breaker takes place in the conformation ring and is determined at the Judge's discretion by the exhibitor's handling/presentation of his/her terrier, by the answers to the Judge's questions, or by a combination of the two. If there is no other available Conformation Judge on the grounds, then the Judge of the day will determine the tie-breaker.

**Back by Popular Demand ... we are offering an  
Outlaw section to Agility.**

**Open to any competitor who wishes to compete with their non-JRT canine companion.**

**Scoring will be according to JRTCA Rules.**

**Non-Sanctioned .. NOT Eligible for High Point & Reserve**

### **Division F - Agility**

- Class 137: Novice On-Lead Time YPS 1.50 - Open to any adult terriers that have not scored above 190 points. This class is for the true beginner terrier with the intent of a pleasant experience on the basic agility equipment. Handlers that drag their terriers around will be seriously faulted. Course to include ramps, tunnels, and various hurdles. (Although this class is for the beginner terrier, you need to have prior exposure to agility equipment.) Non-Certificate. Handlers may remain in this class. May not enter in Off-Lead Classes at this trial. This course is used for the Youth On - Lead class.
- Class 138: Agility I Certificate: Off-Lead. Time 1.75+10% Handlers may remain in this class. Open to any adult terrier. The Agility I Certificates are earned with three scores of 190 or above. Three qualifying scores may move entrant of this class on to Agility II, Agility III, and Jumpers/Game. No cross entering to this class from Agility II and Agility III. This course is used for the Youth Off-Lead. No seesaw or tire jump in this class.
- Class 139: Agility II Certificate: Off-Lead. Time 2.25+10% More difficult course to include all of the Agility equipment plus two more hurdles, weave poles, and seesaw. Qualifying Score of 190 or better earns one leg towards JRTCA Agility II Certificate.
- Class 140: Agility III Certificate: Off-Lead Time 3.00+10% Course to include all Agility I and II equipment. Weave poles are increased to 12 and must end in a "gamble". Qualifying score will be 200 points. Gamble to be set at 8 to 10 feet.
- Class 141: Jumpers/Game Class: Off-Lead Consists of 12-17 jumps and/or tunnels with at least one lead change. Scoring is time plus faults, with lowest score getting 1st regardless of number of faults. Five faults for running course on-lead. Five faults for knocked bar, and off-course. Fifteen faults for a missed obstacle. Qualifying score of 200 earns one leg toward a JRTCA Jumpers/Game Certificate.
- Class 142: **Agility High Score and Reserve:** To be awarded to the high score terrier and runner up combining scores of Agility II and Agility III and qualifying no fault score in Jumpers/Games. No entry fee. Ties to be broken by the fastest time.



**Agility Outlaws - Non-Sanctioned Open to any Non JRT canine competitor.  
All classes judged according to JRTCA Agility Rules stated above:**

- Class 143: Outlaws - Agility I
- Class 144: Outlaws - Agility II
- Class 145: Outlaws - Agility III
- Class 146: Outlaws - Jumpers/Games

**To Keep Trailing & Locating Moving Efficiently:**

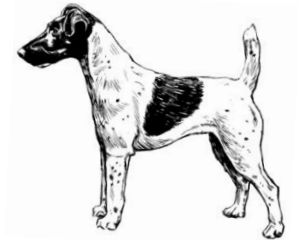
For those of you with multiple terriers entered, please allow the people in line behind you to run in between your dogs. This will keep the line moving smoothly. Thank you!

**Division G - Fun and Field**

**Section 1 - Trailing and Locating -**

**This event is off lead in an area of the nearby woods that is NOT fenced in. The terrier is judged on its ability to follow a line in a simulated natural hunting environment, to locate and mark and open on the quarry.**

- Class 147: Puppies - 6 up to 12 months
- Class 148: Adults - 10" up to 12½"
- Class 149: Adults - over 12½" up to 15"
- Class 150: Veteran - 6 years and older
- Class 151: Seniors - 9 yrs and older
- Class 152: Beyond Geriatrics - Terriers 12 yrs and older - **Non Sanctioned**
- Class 153: **Trailing and Locating Champion and Reserve**



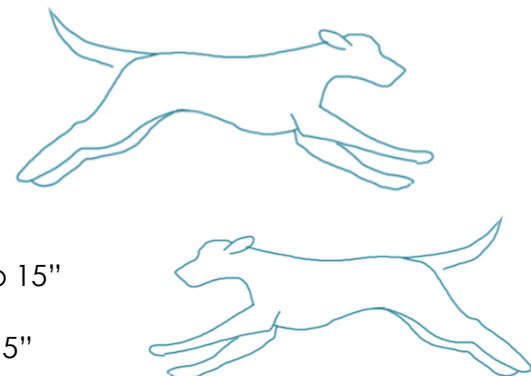
**To Keep Lure Coursing Moving Efficiently:**

For those of you with multiple terriers entered, please allow the people in line behind you to run in between your dogs. This will keep the line moving smoothly. Thank you!

**Section 2 - Lure Coursing - Non Sanctioned**

**Timed event that sends your dog chasing full speed after a lure in a nearby field that is NOT fenced in.**

- Class 154: Puppies 6-12 months 10" up to 12½"
- Class 155: Puppies 6-12 months over 12½" up to 15"
- Class 156: Shorties- Dogs/Bitches under 10½"
- Class 157: Dogs 1 year and older, 10" up to 12½"
- Class 158: Dogs 1 year and older, over 12½" up to 15"
- Class 159: Bitches 1 year and older, 10" up to 12½"
- Class 160: Bitches 1 year and older, over 12½" up to 15"
- Class 161: Veteran Dogs/Bitches, 6 years and older, 10" up to 12½"
- Class 162: Veteran Dogs/Bitches, 6 years and older, over 12½" up to 15"
- Class 163: Senior Dogs/Bitches, 9 years and older, 10" up to 12½"
- Class 164: Senior Dogs/Bitches, 9 years and older, over 12½" up to 15"

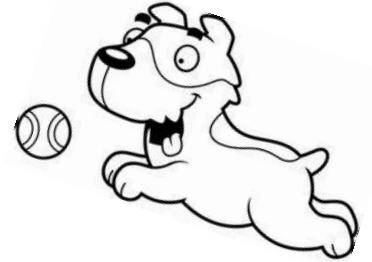


- Class 165: Beyond Geriatrics, Terriers 12 yrs and older
- Class 166: OutLaws - Open to any Non JRT canine competitor
- Class 167: **10" up to 12½" Lure Coursing Champion and Reserve**
- Class 168: **Over 12½" up to 15" Over Lure Coursing Champion and Reserve**

### **Section 3 Ball Toss - Non Sanctioned**

**Use your ball or one of ours! Judged on best retrieval time out of 3 tosses.**

- Class 169: Puppies 4-6 months
- Class 170: Puppies 6-12 months
- Class 171: Adults 10" up to 12½"
- Class 172: Adults over 12½" up to 15"
- Class 173: Veterans Dogs/Bitches, 6 years and older
- Class 174: Senior Dogs/Bitches, 9 years and older
- Class 175: Beyond Geriatrics, Terriers 12 yrs and older -
- Class 176: OutLaws - Open to any Non JRT canine competitor -
- Class 177: **Ball Toss Champion and Reserve**



### **Section 4 Barn Hunt - Non Sanctioned**

**The terrier must find the quarry (rat) in the hay bales in the shortest amount of time!**

- Class 178: Puppies 4 - 6 months
  - Class 179: Puppies 6-12 months
  - Class 180: Adults 10" up to 12½"
  - Class 181: Adults over 12½" up to 15"
  - Class 182: Veteran Dogs/Bitches, 6 yrs and older
  - Class 183: Seniors Dogs/Bitches, 9 yrs and older
  - Class 184: Beyond Geriatrics, Terriers 12 yrs and older -
  - Class 185: OutLaws - Open to any Non JRT canine competitor -
  - Class 186: **Barn Hunt Champion and Reserve**
-



## GENERAL RULES

1. All sanctioned classes are open to Jack Russell Terriers only.
2. Exhibitors and owners of terriers entered must be current JRTCA members and must not be a member of a conflicting JRT organization or register their JRTs in any all-breed registry or conflicting JRT organization. If an exhibitor is found to be in violation of this policy, entry will be disqualified and no refunds will be given. If a violation is confirmed after the trial, placements will be voided from all JRTCA records. Exhibitors must submit a completed entry form including a signed waiver for every trial they enter.
3. Entries must be within the 10-15 inch JRTCA height standard for all sanctioned classes (with the exception of pups who have not yet met the 10 inch height standard); measuring devices will be available on the trial grounds.
4. Puppies (under 12 months) are not eligible for championship in any division but their own. Puppies are eligible to compete only if they have reached their four-month birthday (NOT 16 weeks). A puppy's age is the actual age on the day of the trial.
5. Bitches in season may not compete in any division. Pre-entry fees of bitches in season will be refunded with a veterinarian certificate or as otherwise agreed upon by the Trial Administrator.
6. Spayed or neutered terriers may compete in the Miscellaneous Conformation Section only. They may not compete in Puppy, Family\*, Open, or Working Conformation. **\*Note:** For Family Classes, Brood Bitches and Stud Dogs entered may not be spayed / neutered. The offspring at their sides may be intact or spayed/neutered.
7. A terrier bred by a sanctioned JRTCA Judge may not be shown under that Judge in the Conformation division.
8. Terriers owned or co-owned by the Trial Chairperson or any member of their household may not be entered in any phase of the competition with the exception of Child and Youth Handling.
9. Terriers owned by judges may not be entered in the division in which they are judging but may enter the competition in any other division.
10. Terriers owned by stewards may be entered in any division provided that they find a substitute to perform their duties or find someone else to help showing their terriers.
11. Requests for the measurement of a terrier entered in any class number may be made only by another exhibitor in that same class number or by the Judge EXCEPT in Racing. Requests for the measurement of a terrier in Racing may be made by the Judge or by an exhibitor with a terrier entered in the same class number; OR, if classes are split by gender, may call for a measurement of a terrier of the opposite gender in the same age and height category. (Example: The owner of an under adult dog entered in Racing may call for the measurement of an under adult bitch as the potential exists for them to race each other in the Championship Races.) Exhibitors racing puppies may call for the measurement of a puppy in a different age category as long as it is in the same height category. The person making the request for measurement must name the terrier or terriers they wish to have measured, but requests for measurement of the entire class will not be honored. The measurement of the terrier will be considered the terrier's official height for the duration of the trial. Only JRTCA height cards issues after September 1999 will be honored.
12. Excessive use of squeaky or fur-like baiting devices by exhibitors is prohibited in the Conformation ring and may result in the exhibitor being excused from the class. "Excessive use" will be at the Judge's discretion.
13. Exhibitors participating in the JRTCA Working Terrier Classes or Certificate Go-To-Ground must submit the appropriate JRTCA certificates with pre-entries or at the time of post entry. The Judge may require a copy of the certificate be presented to the ring/den steward at the time

of judging. Registered terriers may submit a copy of NHC certificate signed by a JRTCA Working Judge within 30 days of the date it was issued.

14. Puppies under the age of three months are not permitted on the trial grounds. Any person violating this rule will be excused from all classes entered and asked to leave the trial site.
15. All dogs must be leashed or crated except when competition requires off-leash work. No liberty leashes allowed.
16. Overly aggressive dogs or an owner's failure to control his dog may result in disqualification at the discretion of the Judges or the Trial Administrator.
17. The abuse or severe disciplining of dogs on the trial grounds is prohibited. Anyone displaying such behavior will be asked to leave the trial site and no entry fees will be refunded.
18. Dogs other than JRTs on the grounds may be excluded or permitted at the discretion of the Trial Administrator.
19. Exhibitors are responsible to be on time for classes entered. No refunds will be given for missed classes.
20. The owner/handler of a terrier entering any class does so at his/her own risk and agrees to abide by the rules of the JRTCA and the trial. A copy of the JRTCA Rule Book can be obtained by contacting the JRTCA office (410-561-3655) or it can be downloaded from the JRTCA website ([www.terrier.com](http://www.terrier.com))
21. Unsportsmanlike conduct, or the use of foul and abusive language, will not be tolerated. Anyone demonstrating such conduct will be asked to leave the trial site and no entry fees will be refunded. In addition, such conduct will be subject to penalties, which may include the suspension of membership, restriction from entering the JRTCA National Trial, and/or fines. Trial Chairpersons have the right to refuse any entry at their sole and absolute discretion.
22. All dogs brought to JRTCA Sanctioned Trials must be current on vaccinations. No dogs of any age may be brought to a trial who have suspicion of contagious or infectious disease.
- 23. THE JUDGE'S DECISION CONCERNING PLACEMENTS ARE FINAL IN ALL DIVISIONS!**