

Box 13008 Oklahoma City, OK 73113

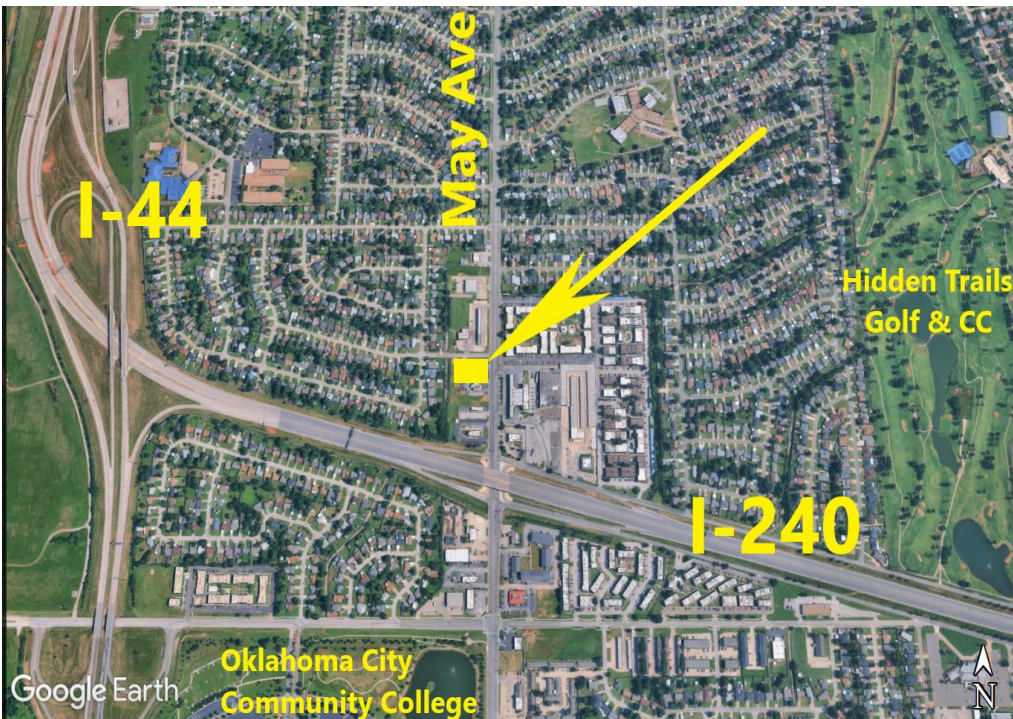


405-848-8099

**Free Standing Retail Building (3200 SF)  
6901 S. May, Oklahoma City, OK**



**Herndon & Kelley, Todd Herndon, CCIM, (405) 848-8099**



- Pole Signage
- 37 Parking Spaces
- Corner Lot
- 23,000 SF Lot

**Nearby: 7-Eleven & OnCue  
C-Stores, Taco Bell, Jack in  
the Box, OKC Community  
College, O'Reilly Auto  
Parts, Braum's, Dollar  
General and Burger King.**

**For Lease: \$3,725.00/month NNN**

**For Sale: \$475,000.00**

*The location offers excellent access to I-240 and I-44. Great for retail, restaurant, office, delivery.  
Interstate 35 is approximately 4.5 miles east.*

This document is an informational summary for review by prospective investors/principals and or their advisors to determine their interest in the subject property. Although the information contained herein has been prepared by Herndon and Kelley Commercial Real Estate or has been furnished by sources deemed reliable, none of such information has been verified and no representation, either expressed or implied is made as to the accuracy thereof. All information contained herein is further subject to correction, modification or withdrawal without further notice. This information is confidential in nature, and should not be reproduced in whole or in part without the express consent of the listing broker.