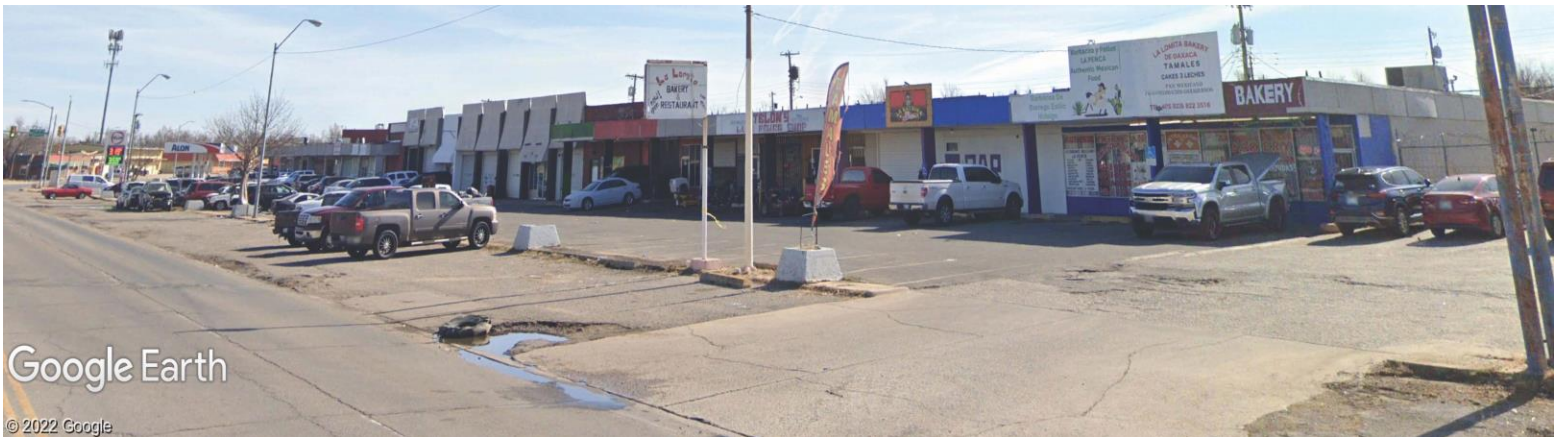


Retail/Industrial Investment Property
3420 SW 29th; 3500 Newcastle Road; and 3546 Newcastle Road
Oklahoma City, Oklahoma



- **124,887 Square Feet on 5.75 Acres**
- **1279 Feet of Frontage on SW 29th / Newcastle Road**
- **Potential Under Market Rent Opportunity**

Price: \$50.00 / Sq. Ft.

Providing a unique opportunity for an investor, this intersection at 29th and Newcastle Road has a variety of tenant uses; and, a location that offers excellent access to I-44, Meridian business corridor, Oklahoma River, Will Rogers World Airport, and is an easy 3.5 miles to serving downtown Oklahoma City.

Herndon & Kelley Commercial Real Estate

Todd Herndon, CCIM

(405) 848-8099