

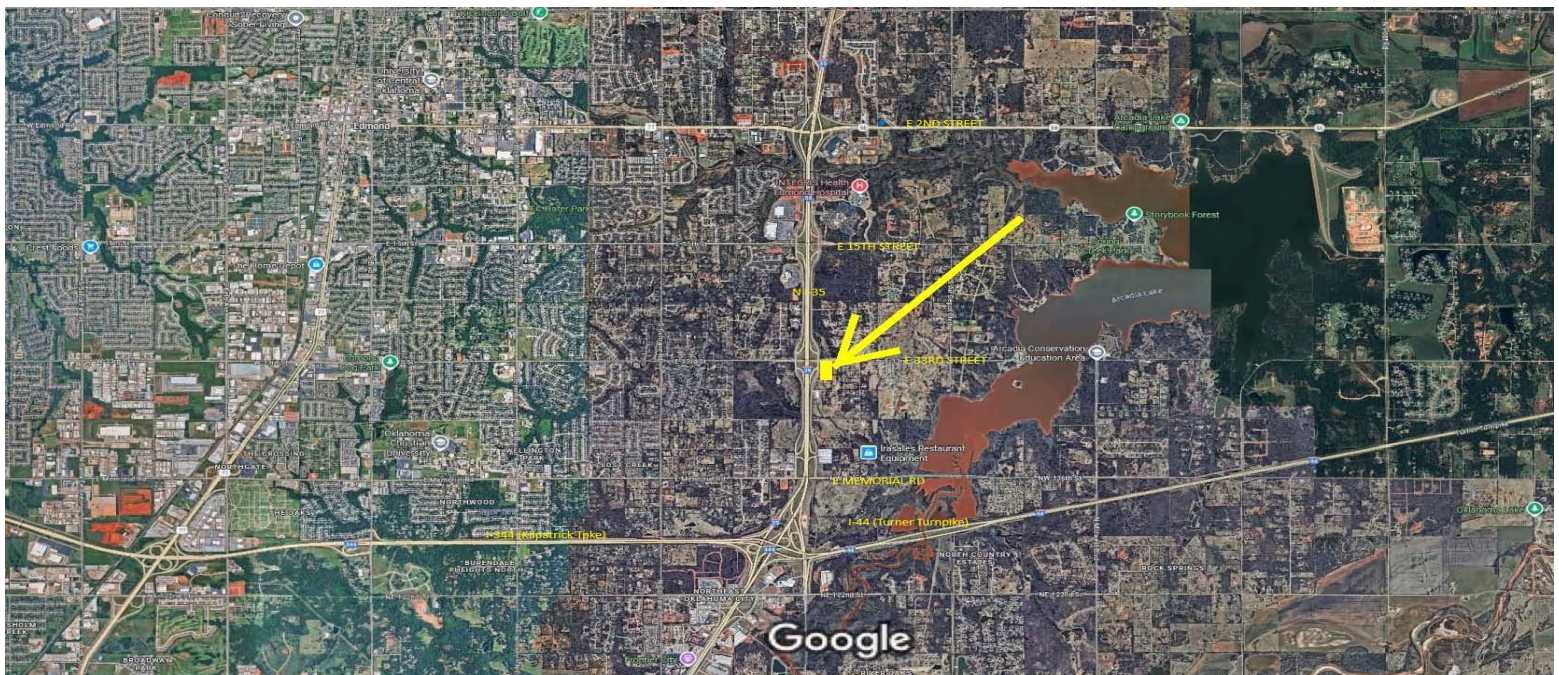
4.36 Acres for Sale or Ground Lease

4304 E. 33rd Street, Edmond, OK 73013

- 4.36 Acres of Land located just east of I-35 Service Road on the southside of E. 33rd Street in Edmond, Oklahoma.
Lot #1 – 2.36 Ac
(380 ft x 270 ft)
(380 ft. frontage is on 33rd St)
Lot #2 – 1.00 Ac (Irregular)
Lot #3 – 1.00 Ac (345 ft x 126 ft)
- **Sales Price:** \$5,000,000.00
Entire 4.36 Acre Parcel
- **Ground Lease Rate:**
Lot #1 – 1 Acre @ \$10,000/Month;
2.5% annual increases.
Lot #2 – 1 Acre @ \$10,000/Month;
2.5% annual increases.



Herndon & Kelley Commercial Real Estate: Todd Herndon, CCIM (405) 848-8099



This document is an informational summary for review by prospective investors/principals and or their advisors to determine their interest in the subject property. Although the information contained herein has been prepared by Herndon and Kelley Commercial Real Estate or has been furnished by sources deemed reliable, none of such information has been verified and no representation, either expressed or implied is made as to the accuracy thereof. All information contained herein is further subject to correction, modification, or withdrawal without further notice. This information is confidential in nature, and should not be reproduced in whole or in part without the express consent of the listing broker.