

**\*Professional Installation Recommended\***

# Cat Security™

by Cap City Muffler



## Honda Element 2003 - 2011

Thank you for your purchase. With the installation of this Cat Security™ shield, we hope that you will help prevent any further catalytic converter theft. The included hardware kit will help further secure your catalytic converter and deter thieves.

### **Package Contents:**

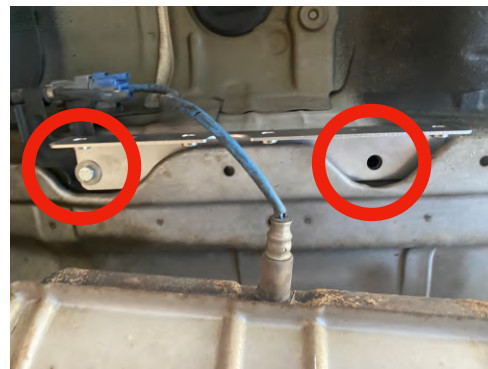
- (1) Stainless rail (passenger)
- (1) Stainless rail (driver)
- (1) Stainless and Aluminum cat shield (fully assembled)
- (1) Rear Security Tab
- (7) 3/16" Rivets
- (1) Oversized 1/4" Expandable Rivet (black)
- (9) M6 Security Bolts
- (1) M6 Security Torx Bit
- (9) M6 Star Lock Washers
- (2) Flange Bolts
- (3) Window Stickers

**\*Professional Installation Recommended\***

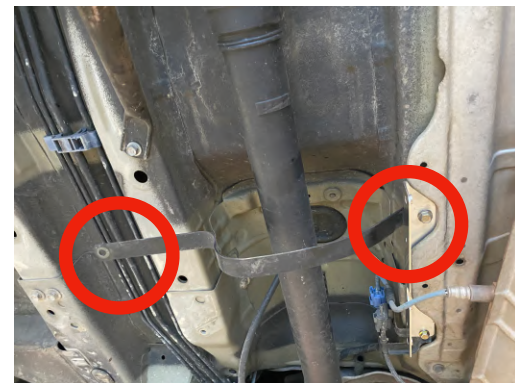
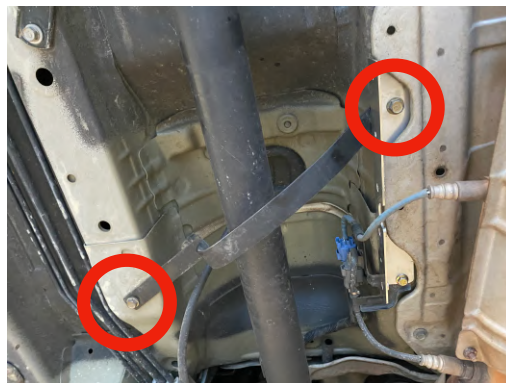
## Honda Element Cat Security™ Install Instructions

**STEP 1: Install Drivers Side Mounting Rail (drivers side, rail with 2 holes)**  
Locate the bracket holding the oxygen sensor harness and remove the bracket bolt. Slide the mounting rail in between the heat shield and body.

The oxygen sensor bracket will go in between the rail and the body. Install supplied Flange in the first hole, then install and crimp the oversized (black) rivet in the second hole. Ensure the bolt is tight and this step is complete.



**STEP 1:- All Wheel Drive has two bolt holes on the drivers rail. This is for the AWD driveline brace. Remove the bolt and install the rail. bend the driveshaft loop strap brace to ensure ample clearance around the driveshaft. Reuse the existing factory bolt.**



**\*Professional Installation Recommended\***

STEP 2: Install Passenger Side Mounting Rail (passenger side, rail with 3 mounting holes) Install the passenger mounting rail going between the heat shield and body. The front flange bolt is supplied, reuse the factory middle bolt, then drill the hole for the 3/16" rivet and install it. Ensure the other two bolts are tight and this step is complete.



**\*Cat Daddy Pro Tip\*:** If you do not have a heavy-duty rivet gun you can purchase this rivet gun on Amazon for under 20 dollars (Astro Pneumatic Tool 1423 1/4" Heavy Duty 13" Hand Riveter)

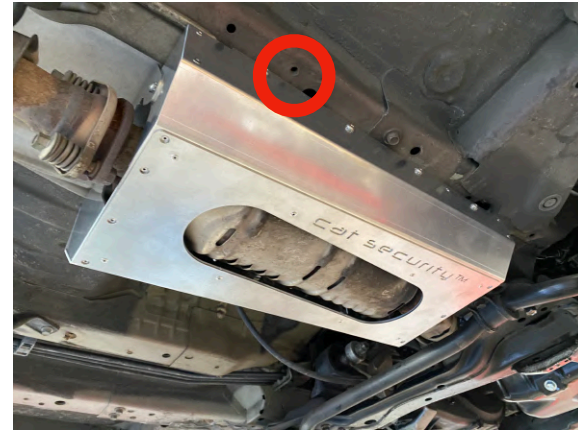




## **\*Professional Installation Recommended\***

**\*\*NOTE - Side Step Users! \*\*** If you have running boards/side steps you may need to trim the passenger bracket 1/4" to allow for proper clearance. The left picture is the mounting bracket and the right picture is where the mounting bracket bolts to the frame.

Trimming the bracket as indicated will allow for proper fit for the shield and the running boards.



**STEP 3:** Temporarily install the rear shield security tab.

Temporarily install the rear security tab using a tamperproof security torx screw (provided).

Do not fully tighten until after main shield is install. The tab needs to rotate over the rear portion of the exhaust for final assembly.

## **\*Professional Installation Recommended\***

### **STEP 4: Install the main body protective shield**

Install the main body protective shield by routing the oxygen sensor wires through the cut outs.

Use the rivets to line up the holes on both sides but do not crimp them yet. Insert and start all the tamperproof security bolts. Once the bolts are started tighten them all down. Finish this part of the installation by crimping the rivets on both sides



### **STEP 5: Install the rear security tab**

Finish out the installation by installing the final two rivets into the security tab. Secure the tamperproof security screw and your install is complete.



**\*Cat Daddy Pro Tip\*:** For added protection, use silicone in the head of the security torx bolts to make it harder to remove.

**\*FINAL STEP\*** - Install the stickers provided on the windows of the vehicle to let others know you are protected.