

Professional Installation Recommended

Cat Security™

by Cap City Muffler



Nissan NV 200

Thank you for your purchase. With the installation of this Cat Security™ catalytic converter protection kit, we hope this will help prevent any further theft. The included hardware kit will help further secure your catalytic converter and deter thieves.

Package Contents:

- (6) - 3/16" Rivets
- (2) - Self-tapping screws
- (10) - M6 x 16 security Torx screw
- (10) - M6 flat washers
- (10) - Lock Washers
- (1) - Tamper resistant T27 Torx bit
- (1) - Front shield stainless
- (1) - Mid shield stainless
- (1) - Mid shield security Tab
- (1) - Top Plate
- (1) - Rear Converter box
- (1) - 1 Box front plate
- (1) - 1 Box rear plate

Professional Installation Recommended

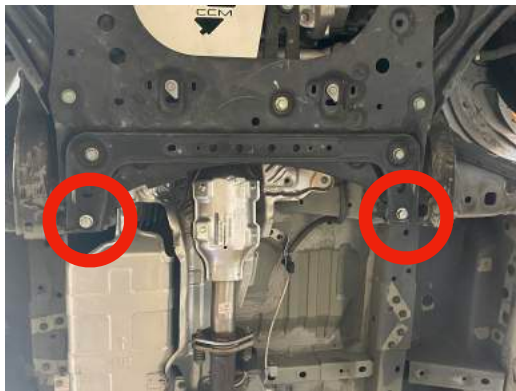
Step 1 - Front shield

Remove the two shaft mount bolts and set them aside. Place the shield over the two bolt holes and re-install the bolts. Tighten the bolts, this will complete the step for the front shield.



Step 2 - Installing the mid shield.

First, remove these two subframe bolts (rear)



The first image shows the mid shield installed without security hardware. It is CRITICAL that you open the gap between the subframe and frame rail in order to slide the shield in. Use a pry-bar or large flat screw driver pry in-between. Area is circled in the first picture.

Using a dead blow or rubber mallet to GENTLY tap the shield into place will also help.



***Cat daddy pro tip* Remove these two bolts to aid with installation of a rivet on the mid shield.**

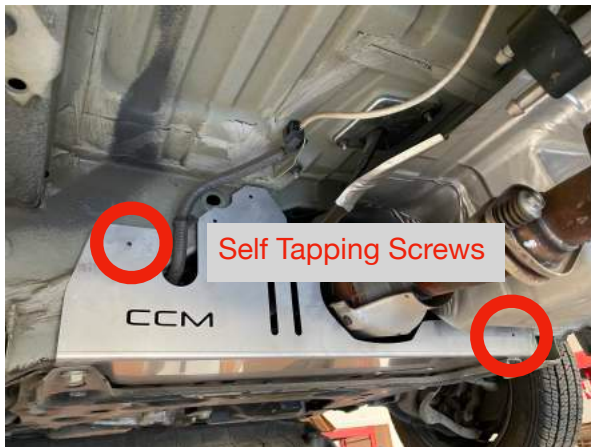
Professional Installation Recommended

Due to variations with the exhaust, trimming of the mid shield may be required. Install mid shield without hardware and check for clearance around the converter. Mark contact areas, remove and trim shield. (We have found a grinder is quickest) Once the proper gap is obtained finish the installation.



Do not fully install mid shield until the gap between the converter has been adjusted if necessary. A 7/16" Gap is adequate.

First, hand thread in passenger side bolt, then drivers side. Once bolts are in, secure them down. Install the self tapping screws in the locations shown, then install the rivets. Check your clearances to ensure proper fit then crimp the rivets. Re-install the wiring harness bracket.



Step 3 - Install Mid shield TAB

Secure the mid shield tab as shown in the photos. Mid shield tab should cover the top of the converter as shown here.

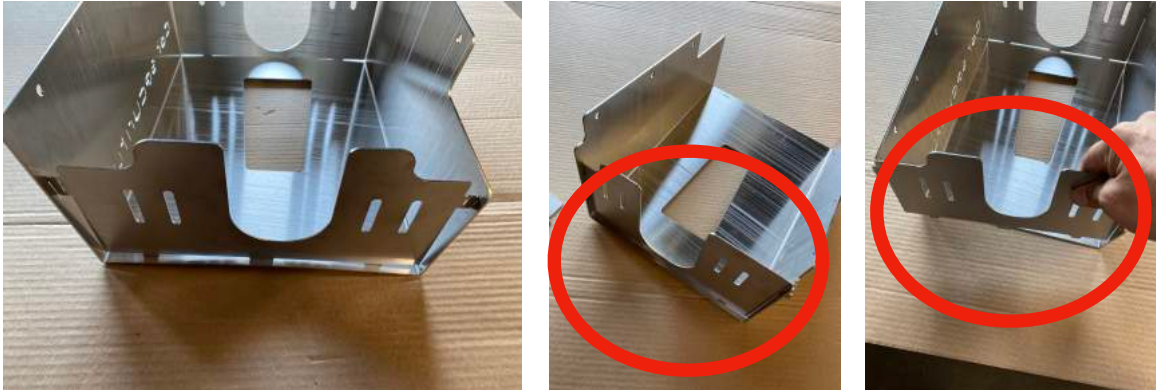


Professional Installation Recommended

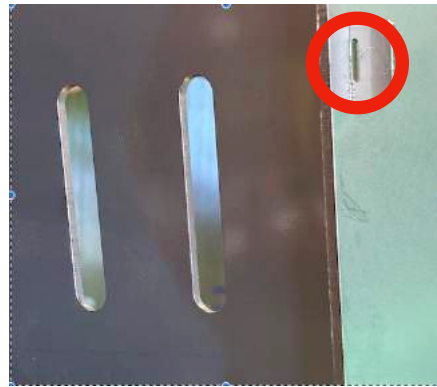
Step 4 - Assembly and installation of the box

Each Box Plate end will only fit in one direction. Hold the end caps up to the box to determine where the need to go, then install the bottom tabs first. You will need to pull the main part of the box open slightly to install the end caps. Once the sides are released they should “snap” into place.

The tabs on each end should extend out from each end cap as shown here. There are 3 tabs on each side. The other 2 tabs on the bottom do not get bent.



Once the tabs are though the slots, secure the pieces together by bending the tabs over as



shown here. The tabs should look as pictured once they are installed properly. Set the lower box aside until top plate is installed.



***Cat Daddy Pro Tip* -**
Once installed they should not rattle, if they do the tabs are not bent enough.

Professional Installation Recommended

Step 5 - Top plate and box installation

Loosen the bolt for the oxygen sensor shield and move it out of the way to allow for adequate room to install the top plate for the box.



You will remove all of the factory bolts on the heat shield and discard. They will be replaced with (4) M6 Tamper-proof Torx bits, lock washers and flat washers, in that order.

The top plate will go against the vehicle and the heat shield will be reinstalled under the plate.

3 bolts go through factory heat shield and 1 does not. Hand tighten first wait to finish tightening completely until the bottom part of the box is installed.



Installed you should see the top shield and fasteners look like the pictures. Do not fully tighten until after lower box is installed.



Professional Installation Recommended

Install the bottom part of the box and temporarily install (DO NOT CRIMP YET) rivets to align the box bolt holes.



Install the on each side (3) M6 tamper proof Torx bolts with star washers. Finish securing the bottom box by tightening the bolts, then finish crimping the rivets.

Finish securing the (4) bolts the hold the top plate to the vehicle and your installation is now complete.



***CAT DADDY PRO TIP* -**
You can use silicone in the heads of the Torx bolts to prevent tampering

The arrows indicate where you need to check for clearance and if necessary adjust the hanger to pull the cat converter up from touching the ends of the cat security box.



CAT DADDY PRO TIP
Due to vehicle manufacturing slight adjustments may be necessary to prevent contact between exhaust pipe and box.

