

Locations in Memphis & Jackson, TN

Signs and Symptoms

CHANGES IN VISION

Fluctuations in sugar levels cause swelling in the eye that can affect both your near and far vision which can be temporary or permanent

FLOATERS OR "VEILED VISION"

Diabetes-related bleeding in the gel-like substance of the eye can cause floaters or curtain-like obstructions

CATARACTS OR GLAUCOMA

Patients with diabetes are also more likely to develop cataracts or glaucoma due to their condition



***WE SEE YOU, SO YOU
SEE BETTER!***

Come Visit us!

Scan the QR Code below to schedule an exam at one of our locations or visit our website to learn more!



Want to learn more?

Head to our website and read more about it on our blog!



CONTACT US

📍 MEMPHIS: 2760 N. GERMANTOWN PKWY STE. 109

☎ (901) 310-3137

📍 JACKSON: 2100 PLEASANT PLAINS EXT. STE. C

☎ (731) 664-2860

Fax: (901) 444-3180

✉ info@angeleyesvision.com

Diabetes & Your Vision

DIABETES IS A SYSTEMIC CONDITION, INCLUDING POTENTIALLY PROFOUND IMPACT ON YOUR EYES



ANGEL EYES VISION

We see you, so you see better.

www.angeleyesvision.com

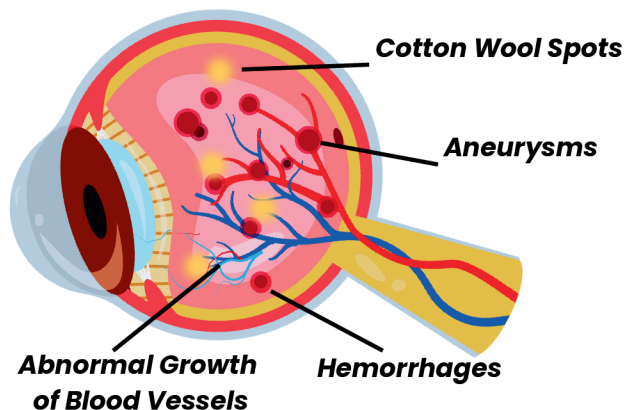
What is Diabetic Retinopathy?

Diabetic retinopathy is glucose-related damage to the blood vessels within the retina – the light-sensitive tissue lining at the back of the eye that sends visual signals to the brain.

Elevated blood sugar levels over time damage the delicate blood vessels in the eye, leading to swelling of the vessels and bleeding into the eye.

In more severe cases, bleeding and blockages deprive the retina of vital nutrients. Because the earliest stages of retinopathy can develop without noticeable symptoms, it takes a visit to the eye doctor to discover its impact.

DIABETIC RETINOPATHY IS THE LEADING CAUSE OF BLINDNESS AMONG ADULTS



www.angeleyesvision.com

of Type II Diabetics have eye problems within 15 years

78%

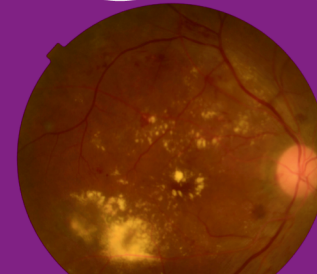
If left untreated, diabetic retinopathy can progress to a more advanced stage known as **proliferative diabetic retinopathy**, which comes with the growth of abnormal blood vessels in the eye. The new blood vessels grow in response to decreased blood flow; however, these new vessels are fragile and prone to more bleeding. The bleeding can cause a patient to see floaters or spots.

In severe instances, patients may complain of blurred vision, sudden vision loss, or seeing a curtain-like obstruction in their field of vision. The bleeding may also lead to scarring in the eye and permanent loss of visual acuity.

Visits to the eye doctor are not only crucial for protecting a patient's vision; eye exams offer a literal window into the body where a doctor can glimpse the damage of elevated blood sugar.

THE IMPACT OF DIABETES ON THE EYES CAN BE SO PRONOUNCED THAT EYE DOCTORS SEE THE DAMAGE BEFORE A PATIENT EVEN KNOWS THEY ARE DIABETIC

Additionally, because diabetes is a systemic condition, what shows up in the visual system is likely causing problems in other parts of the body. For example, studies have linked diabetic retinopathy with increased risk of cardiovascular events, such as heart attacks.



RETINAL IMAGING IS USED BY EYE DOCTORS TO VIEW AND EVALUATE THE HEALTH OF THE EYE

Prevention and Treatment

AN OPTOMETRIST WILL DISCUSS THE BEST TREATMENT OPTIONS FOR YOU

Annual Comprehensive Eye Exams

You likely won't notice the earliest symptoms of retinopathy, but an eye doctor will be able to discover issues as part of an annual exam


Healthy Lifestyle Choices

Maintain a healthy diet, exercise regularly, and avoid cigarette smoke to help control your blood sugar levels, in addition to promoting overall health.

Laser & Other Treatments

If a patient develops retinopathy, doctors offer treatments to stem the bleeding and stop or slow the progression of vision loss


BLURRY VISION
AMONG FIRST SIGNS


ANNUAL EYE EXAMS
FIND PROBLEMS
EARLY


EARLY DETECTION
IS ESSENTIAL