

The Signs & Symptoms



- 1 BLURRED VISION OR VISION LOSS**
Fluctuations in sugar levels can cause swelling in the eye that can affect both your near and far vision
- 2 FLOATERS OR “VEILED VISION”**
Diabetes-related bleeding in the gel-like substance of the eye can cause floaters or curtain-like obstructions
- 3 CATARACTS OR GLAUCOMA**
Patients with diabetes are also more likely to develop cataracts or glaucoma due to their condition

 **Want to Learn More?**
Head to our website for our full explainer



SCHEDULE A VISIT



ANGEL EYES VISION IS A VALUES-LED TEAM OF EYE CARE PROFESSIONALS. WE SEE YOU, SO YOU SEE BETTER.

LOCATIONS ACROSS WEST TENNESSEE & NORTH MISSISSIPPI

Phone: (901) 444-3160
Fax: (901) 444-3180
E-mail: Info@AngelEyesVision.com

WWW.ANGELEYESVISION.COM

Diabetes & Your Vision



Know the Facts

DIABETES IS A SYSTEMIC CONDITION, INCLUDING POTENTIALLY PROFOUND IMPACT ON YOUR EYES



WWW.ANGELEYESVISION.COM

WHAT IS DIABETIC RETINOPATHY?

Diabetic retinopathy is glucose-related damage to the blood vessels within the retina — the light-sensitive tissue lining at the back of the eye that sends visual signals to the brain.

Elevated blood sugar levels over time damage the delicate blood vessels in the eye, leading to swelling of the vessels and bleeding into the eye.

In more severe cases, bleeding and blockages deprive the retina of vital nutrients.

Because the earliest stages of retinopathy can develop without noticeable symptoms, it takes a visit to the eye doctor to discover its impact.

78%

 OF TYPE II DIABETICS HAVE EYE PROBLEMS WITHIN 15 YEARS

If left untreated, diabetic retinopathy can progress to a more advanced stage known as proliferative diabetic retinopathy, which comes with the growth of abnormal blood vessels in the eye.

The new blood vessels grow in response to decreased blood flow; however, these new vessels, are fragile and prone to even more bleeding.

The bleeding can cause a patient to see floaters or spots. In severe instances, patients may complain of blurred vision, sudden vision loss, or seeing a curtain-like obstruction in their field of vision. The bleeding may also lead to scarring in the eye and permanent loss of visual acuity.



RETINAL SCANS FROM YOUR EYE DOCTOR CAN LOOK FOR PROBLEMS

“ Diabetic retinopathy is the leading cause of blindness among adults



BLURRY VISION AMONG FIRST SIGNS



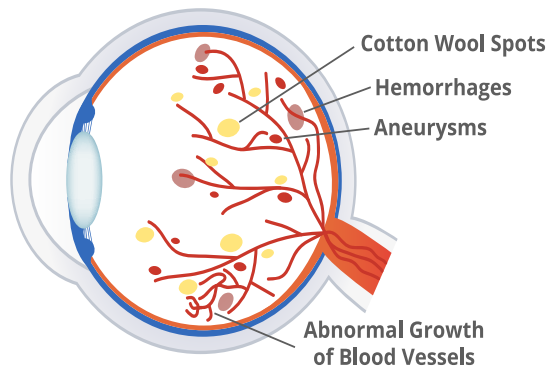
ANNUAL EYE EXAMS FIND PROBLEMS EARLY



EARLY DETECTION IS KEY

PREVENTION & TREATMENTS

Diabetic Retinopathy



Visits to the eye doctor are not only crucial for protecting a patient's vision, eye exams offer a literal window into the body where a doctor can glimpse the damage of elevated blood sugar.

THE IMPACT OF DIABETES ON THE EYES AND VISION CAN BE SO PRONOUNCED THAT EYE DOCTORS ROUTINELY SEE THE DAMAGE BEFORE A PATIENT EVEN KNOWS THEY HAVE DIABETES

Additionally, because diabetes is a systemic condition, what shows up in the visual system is likely causing problems elsewhere in the body.

For example, studies have linked diabetic retinopathy with an increased risk of cardiovascular events, such as heart attacks.

ANNUAL COMPREHENSIVE EYE EXAMS

You likely won't notice the earliest symptoms of retinopathy, but an eye doctor will be able to discover issues as part of an annual exam

HEALTHY LIFESTYLE CHOICES

Maintain a good diet, exercise regularly, and stop smoking to help control your blood sugar levels, in addition to promoting your overall health

LASER & OTHER MEDICAL TREATMENTS

If a patient develops retinopathy, doctors can offer treatments to stem the bleeding and stop or slow the progression of vision loss