



THE RIVERHOUSE AT THE OLD MILL

LANDSCAPE DESIGN MASTERPLAN

Heidi Pereira

CKLA 450 Landscape Restoration

August 6, 2019



MASTERPLAN STATEMENT

The masterplan for The Riverhouse at the Old Mill unites the front of the building with the neighbourhood with its Arts & Crafts style and restores the east and north sides of the building to a naturalized area.

DESIGN CONSIDERATIONS

The site is divided into two sections, each with a unique set of opportunities, constraints and design sensibilities:

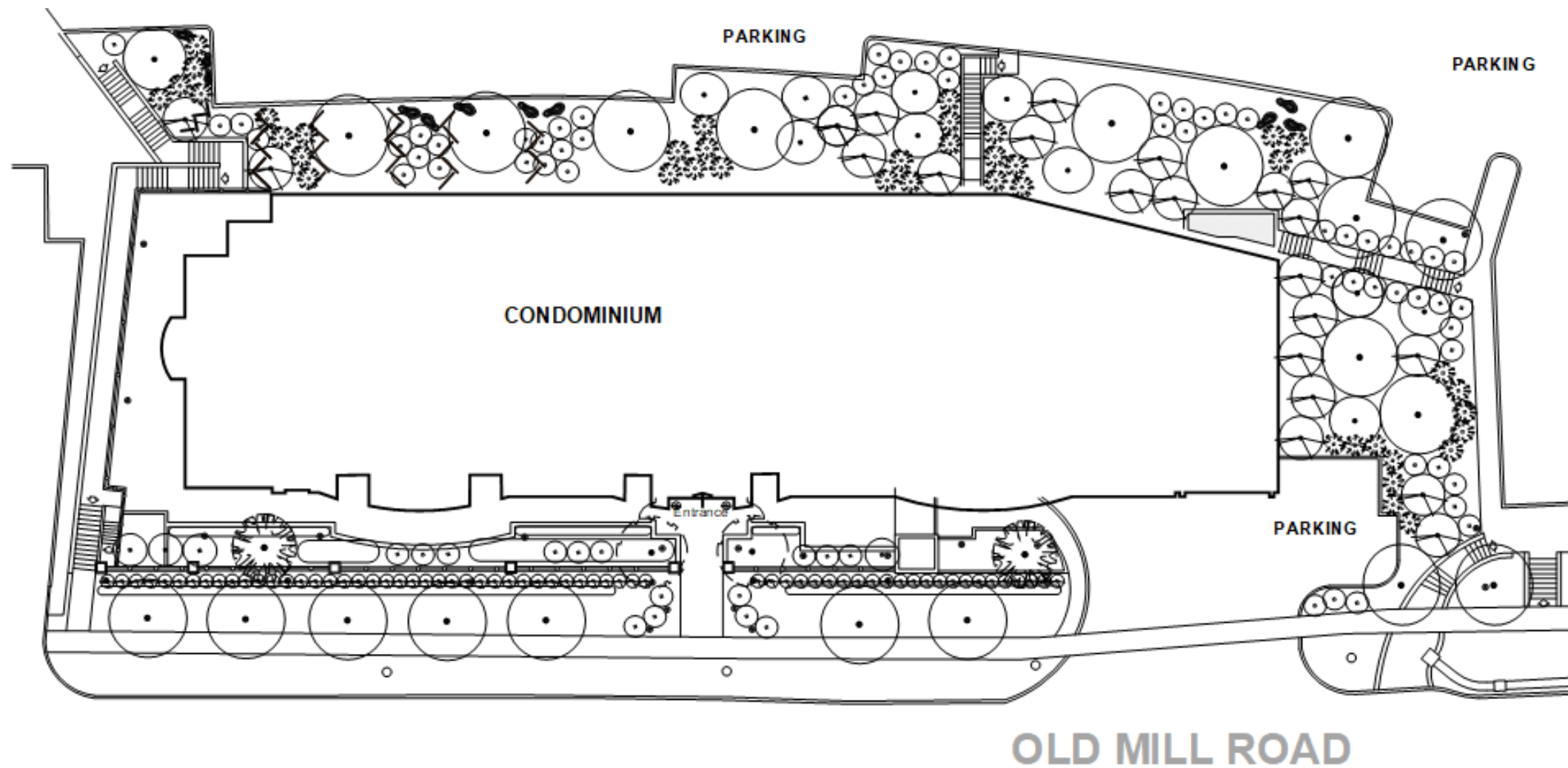
SOUTH ENTRANCE

- Arts & Crafts style creates pleasing and unique entrance for owners and visitors, complements building and surrounding neighbourhood
- Plant material to tolerate and ameliorate conditions of full sun, little to no breeze and heat gain
- Create symmetry, frame and shade the entrance to the courtyard with specimen trees, flowering shrubs, lush ferns and vivid coloured perennials in the Arts & Crafts style

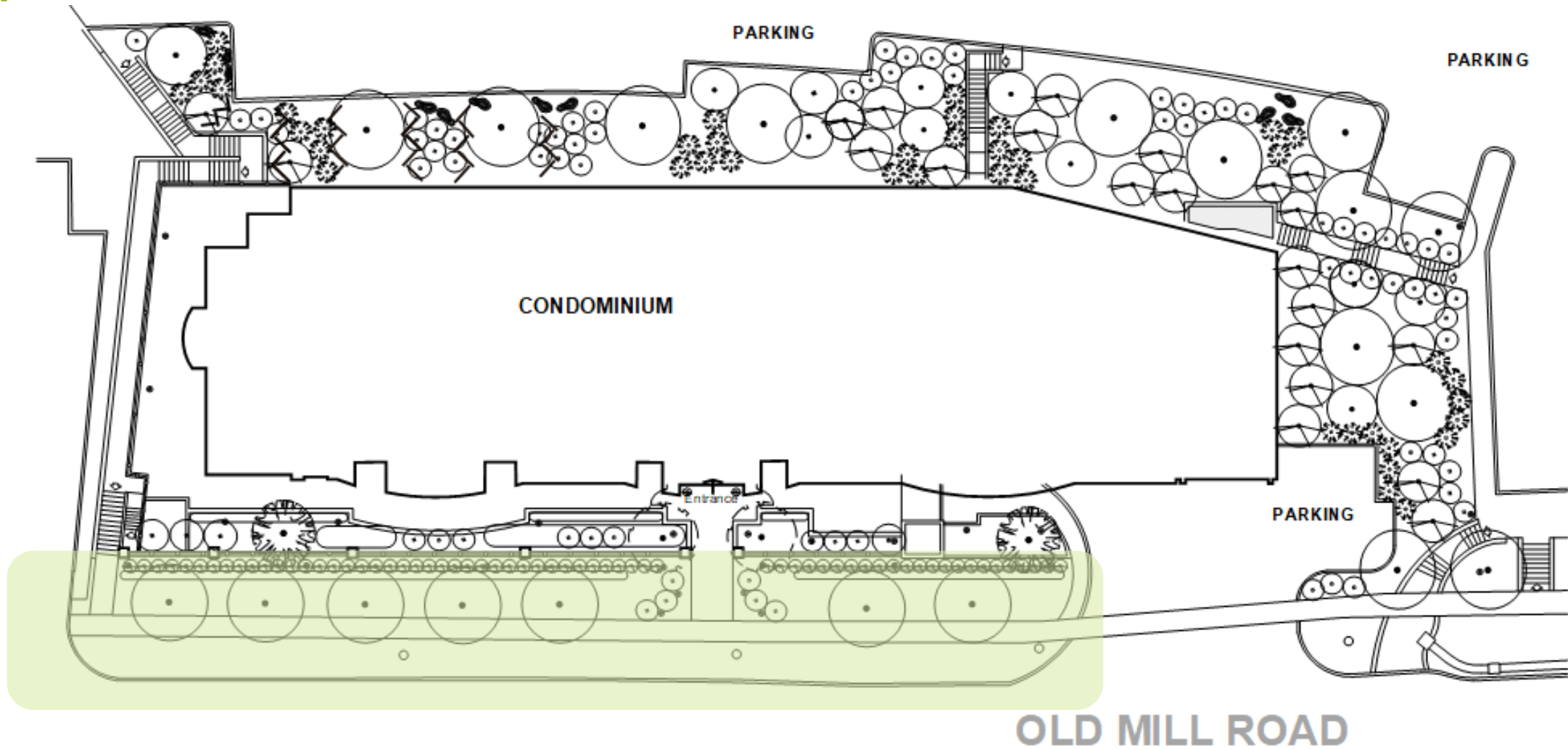
NORTH AND EAST SLOPES

- Create diverse and resilient naturalized area with native plants appropriate for the sloping terrain in part to full shade, the proximity to the river valley and the Humber River floodplain
- Create windbreak on north east corner with dense planting of wind-tolerant deciduous and evergreen trees and shrubs
- Prevent erosion and manage rainwater with cedar zipper logs and limestone boulders
- Deter establishment of weed seeds brought in by winds with dense planting of native grasses and perennials

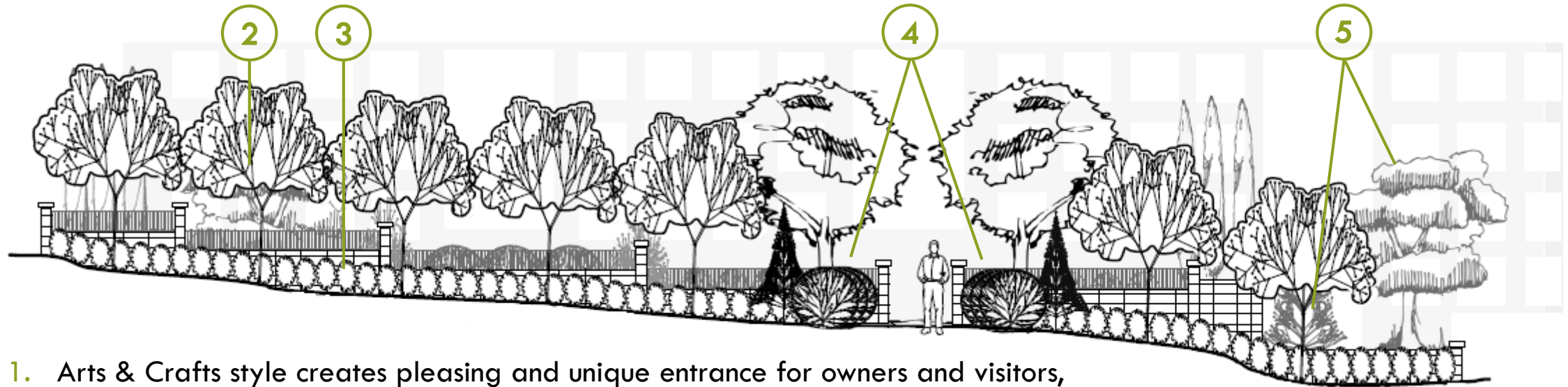
MASTERPLAN



FRONT ENTRANCE

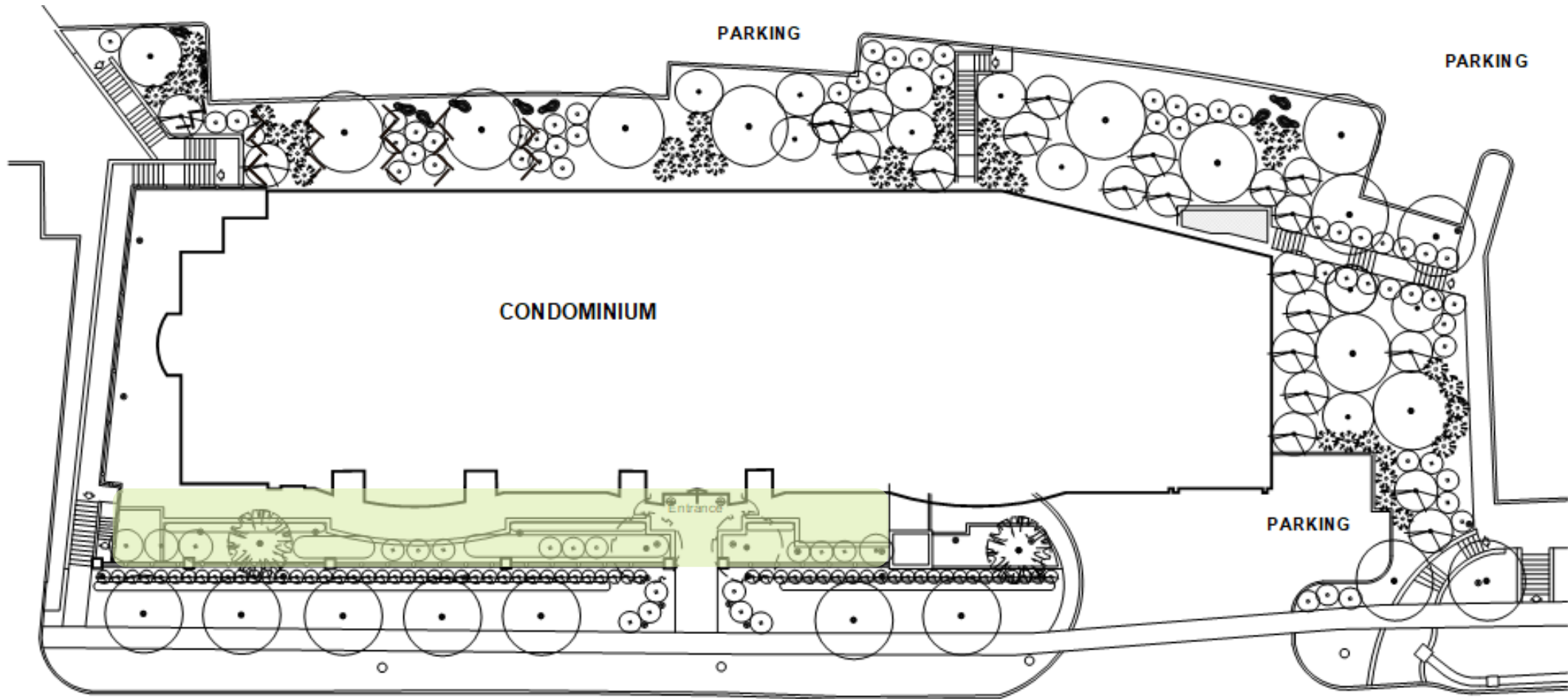


FRONT ENTRANCE



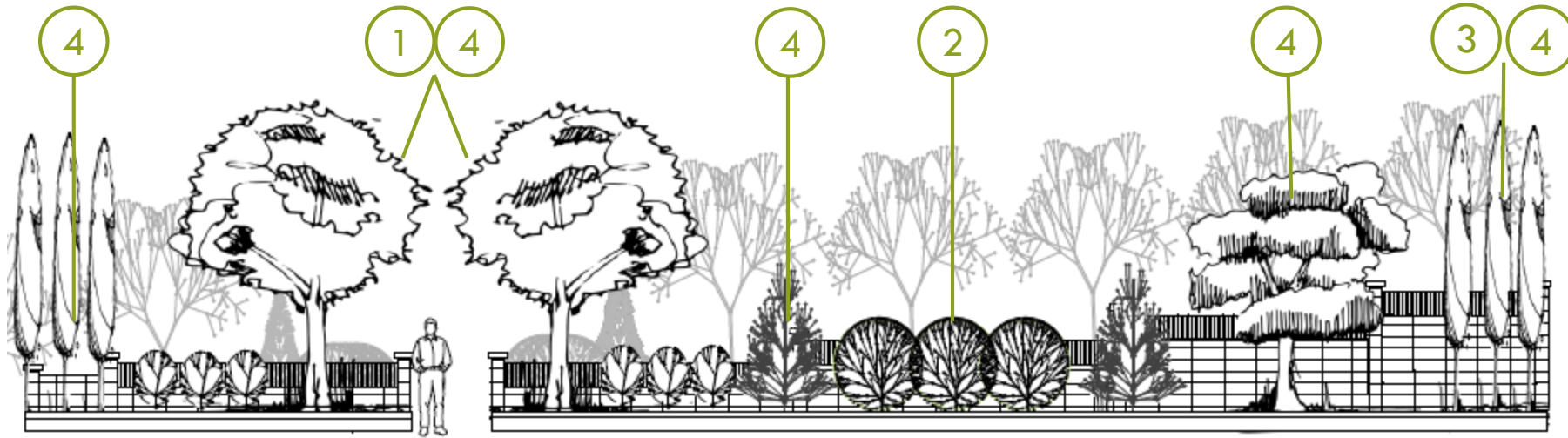
1. Arts & Crafts style creates pleasing and unique entrance for owners and visitors, complements building and surrounding neighbourhood
2. Replacement of missing deciduous city trees on north side of the sidewalk
3. Evergreen hedge along the wall provides privacy and cooling to courtyard, row of vivid-coloured perennials in Arts & Crafts style in front for additional seasonal interest
4. Symmetrical plantings at entrance: evergreens, flowering shrubs, continuation of the perennial border, deciduous specimen trees with arching branches visible from inside the courtyard
5. On extreme south east, an open canopied tree and evergreen unites the planter beside the pedestrian parking entrance with the rest of the façade without blocking sightlines from the street or sidewalk

FRONT ENTRANCE — COURTYARD



OLD MILL ROAD

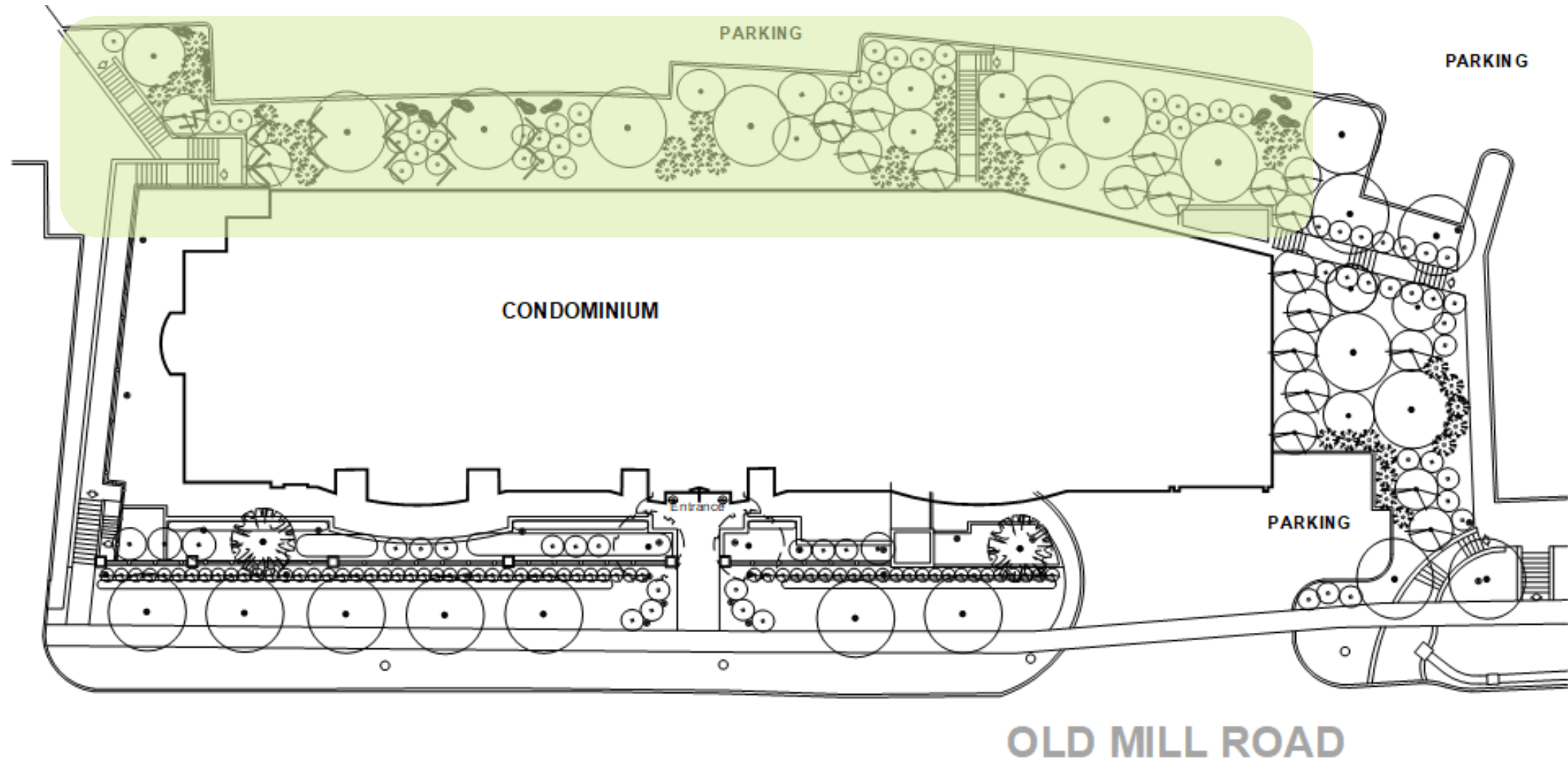
FRONT ENTRANCE — COURTYARD



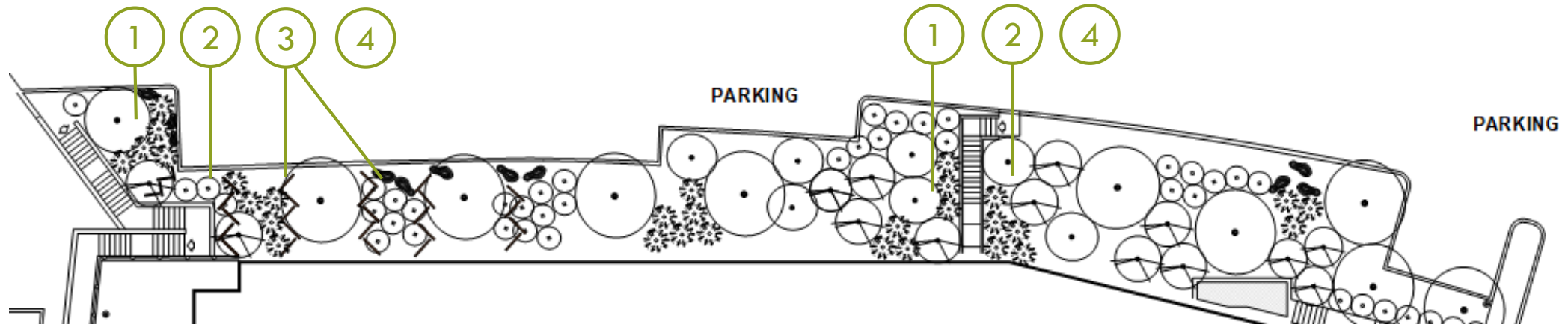
≡

1. A pair of multi-stemmed deciduous specimen trees with arching branches frame and shade the front entrance and courtyard
2. Planters along south side of the courtyard contain evergreens, flowering shrubs, bold coloured perennials and lush ferns
3. Row of deciduous trees and flowering vine on fence in extreme south west corner provide additional reprieve from sun and heat
4. Uplighting highlights trees and evergreens, path lighting creates ambience in the courtyard at night

NORTH SLOPE

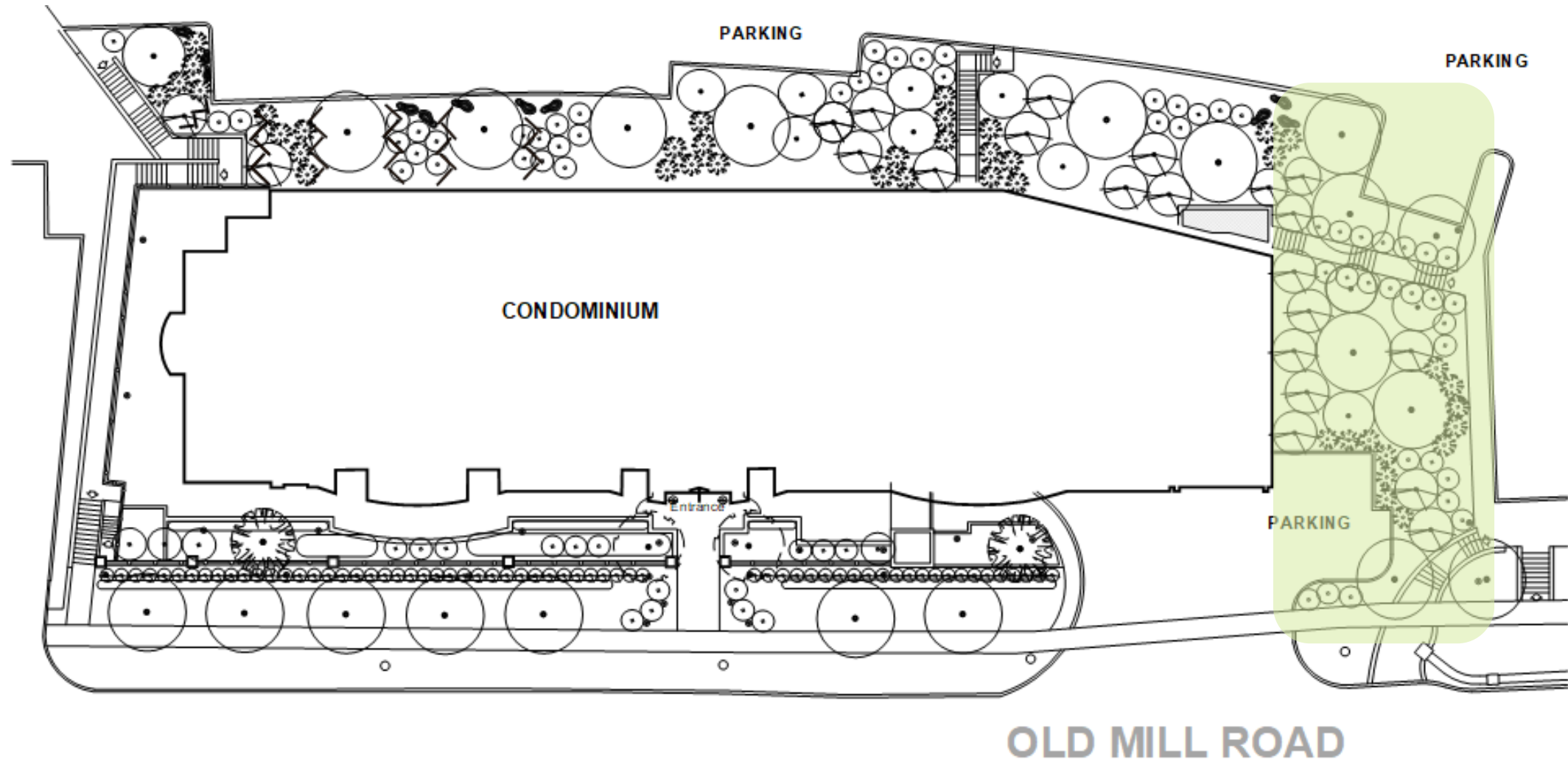


NORTH SLOPE



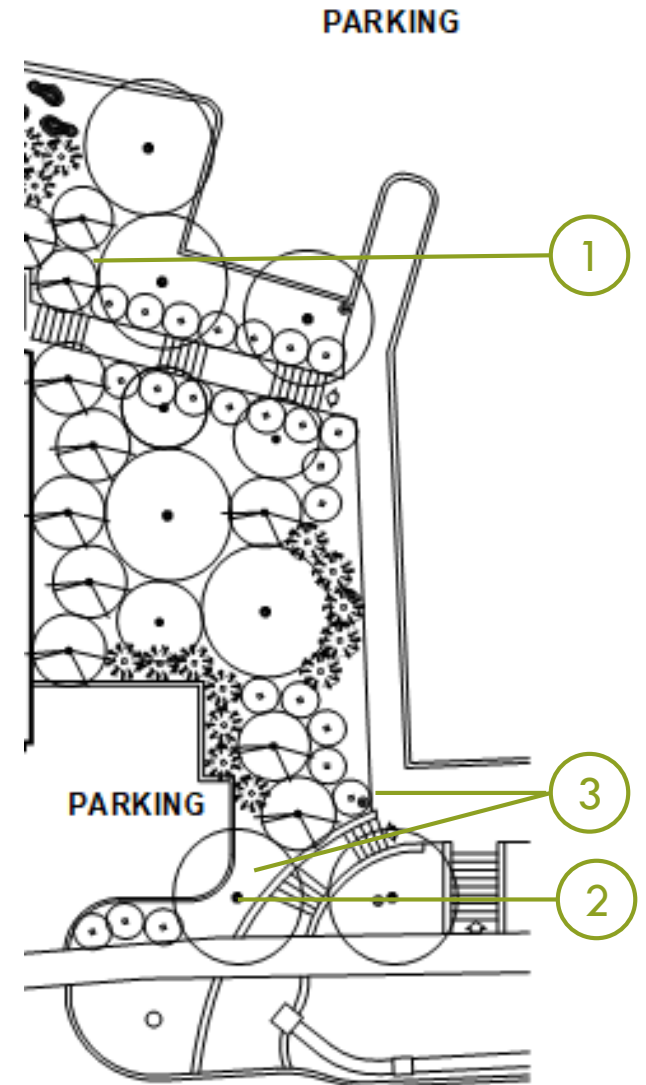
1. Native, flood and drought tolerant, deep and shallow rooted trees and shrubs control erosion
2. Massed plantings around staircases provide wind attenuation and conceal undesirable views
3. Cedar zipper logs manage rain water and prevent erosion while other plantings mature
4. Native seedmix (50% grasses, 50% perennials) hand-sewn across north slope to prevent weed growth

EAST SLOPE



EAST SLOPE

1. Native, flood and drought tolerant, deep and shallow rooted trees and shrubs control erosion, masses around north east corner of building and staircase provides wind attenuation and conceal undesirable views
2. Extreme south east features a specimen native tree, provides interest and shade to staircase that links parking lot and street, grouping of conifers shield pedestrians from wind
3. Lighting design emphasizes specimen trees, lights hidden in shrubs illuminate walkways and staircases





THANK YOU